

International Journal of Innovative Research in Science, Engineering and Technology

(An ISO 3297: 2007 Certified Organization)

Vol. 3, Issue 3, March 2014

Fatigue Life Assessment of Century Old Railway Bridge in India

Kishore Ch. Misra¹, Debojyoti Panda² and Soumya Bhattacharjya³

PhD student, Department of Civil Engineering, Bengal Engineering and Science University, Shibpur, West Bengal, India¹

Bachelors student, Department of Civil Engineering, Bengal Engineering and Science University, Shibpur, West Bengal, India²

Assistant Professor, Department of Civil Engineering, Bengal Engineering and Science University, Shibpur, West Bengal, India³

Abstract: Fatigue life assessment of a century old railway bridge in India namely Jubilee bridge has been calculated following Eurocode 3 by using the Palmgren-Miner Rule. It has been observed that the remaining fatigue life of different members and bearings of the bridge has been exceeded in 2014 or on the verge of exceeding. Considering uncertainty and maintenance point of view the bridge, especially the outer bearing would be in more critical with respect to fatigue damage. Thus, it can be safely concluded that the bridge is no longer safe from fatigue point of view.

Keywords: Fatigue life assessment, Palmgren-Miner Rule, Railway bridge, fatigue damage

I. INTRODUCTION

Fatigue is the progressive and localized structural damage that occurs due to the action of fluctuating stress on a structural component, when it is subjected to cyclic loading for a sustained period of time. Machine parts as well as a large number of structural systems like bridges are frequently subjected to varying stresses and it is important to know the strength of the material as well as its tentative life at an acceptable level of performance under such conditions. In the past, the collapse and failure of an appreciable number of structures have been attributed to fatigue failure. In India itself, an alarming number of bridges are in service that have crossed their design lives and are highly vulnerable to fatigue damage and failure. Keeping this in mind the large risk that they pose to mankind in terms of life risk and loss of livelihood, besides economic ramifications, it is absolutely necessary to assess the health of these structures systematically from the fatigue point of view so that proper remedial measures can be taken beforehand to preclude any accident due to the same.

II. OBJECTIVE

The objective of the present investigation is to perform a detailed fatigue life assessment of the Jubilee Bridge in West Bengal, India (Fig. 1). The motivation behind this study lies in the fact that the bridge, which was opened to railway traffic in the year 1887, is still in service and is an important railway bridge connecting the places, Bandel and Naihati, across the River Hooghly and is flanked on either side by Garifa and Hooghly Ghat Railway Stations. Since the design life of this bridge has already expired, it is absolutely necessary to assess and justify whether the bridge should be left in service as it is (i.e. continuing with standard maintenance and monitoring) or additional remedial measures needs to be taken from an engineering point of view to address any potential or existing damage that has been caused or aggravated by fatigue.

III. METHODOLOGY

A. General Information

The single track 366 m long railway bridge was built in 1885 and opened for traffic in 1887. It is still in use today. The bridge was fabricated and erected by James Goodrich & Co. Engineering & Founders. The bridge is of riveted cantilever truss type and composed of two equal trusses. The structural system of each truss is shown in Fig.2. In 2013, after over 125 years of service, there is a motivation for assessment of the fatigue life of the bridge since the bridge has

International Journal of Innovative Research in Science, Engineering and Technology

(An ISO 3297: 2007 Certified Organization)

Vol. 3, Issue 3, March 2014

reached the end of its design working life. Therefore, an assessment is carried out to determine the residual life of the bridge.



Fig.1. The Jubilee Bridge across River Hooghly, West Bengal, India.

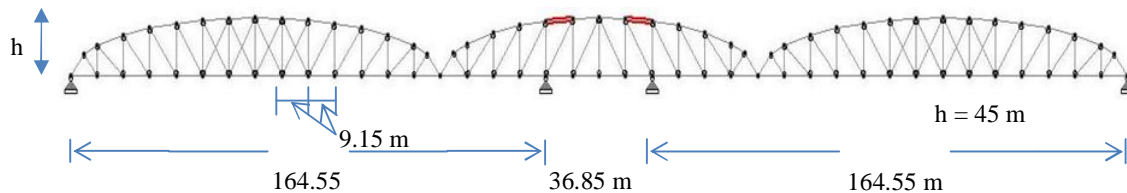


Fig.2. The structural system of the truss of the Jubilee Bridge STAAD model with the most critical members shown in red.

It has to be noted that, in old bridges fatigue damages occur primarily in the longitudinal and cross-girders of the bridge and its connections. However, in this case study it is assumed that these more critical bridge members have been replaced and the aim of the following investigation is to examine only the members of the two trusses and the bearing of the bridge.

B. Modelling

A three-dimensional model of the Jubilee Bridge is prepared using the software STAAD.pro and is shown in Fig. 3. The sections used in different members are depicted in Table 1. The support conditions of the bridge model have been assigned to be hinged in nature for the sake of simplicity, as detailed information to assess the degree of partial fixity at the supports was not available.

C. Loading and Support Conditions

Primarily the load data of four types of railway goods rakes [1-3] have been considered for the purpose of load calculation, the details of which are as follows :-

- 1) Taken Over Coal rakes (Composition – 2L + 55 BOXN, Train Length – 624.151 m, Total Weight – 5140 t)
- 2) Taken Over Other rakes (Composition – 2L + 40 BOX, Train Length – 583.726 m, Total Weight – 3551 t)
- 3) Made Over Loaded rakes (Composition – 2L + 40 BOX, Train Length – 583.726 m, Total Weight – 2902 t)
- 4) Made Over Empty rakes (Composition – 2L + 40 BOX, Train Length – 583.726 m, Total Weight – 1036 t)

The axle loading arrangements for the two different compositions of rakes (2L + 40 BOX and 2L + 55 BOXN) are shown in Fig. 4.

D. Post-processing of the analytical results

The maximum and minimum axial stresses that the members and the bearings of the truss are subjected to, due to the cumulative action of the moving loads and the self-weight of the structure are analysed from the results of the computational analyses for each of the aforementioned four types of rakes at different positions of the moving load. It is observed that of all the members of one of the two trusses that are symmetrical in nature, the rafter element (shown

International Journal of Innovative Research in Science, Engineering and Technology

(An ISO 3297: 2007 Certified Organization)

Vol. 3, Issue 3, March 2014

in red in Fig.2) is the most critical. This is concluded on the basis of the computational results which reveal that these members are being subjected to the greatest axial stress range for all the four types of rakes that have been considered.

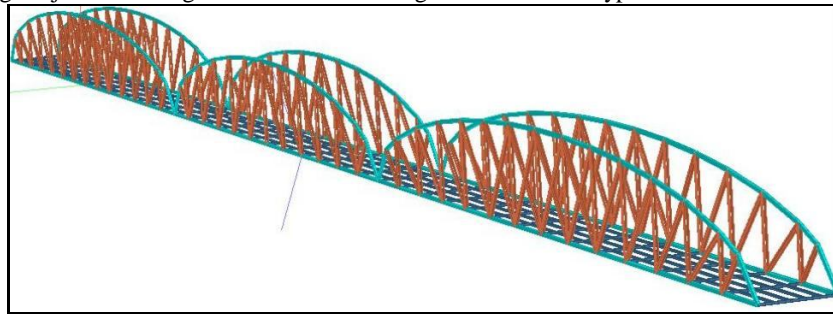


Fig.3. A three-dimensional model of the Jubilee Bridge built in STAAD.pro environment.

Table 1. Cross-sectional details of the model of Jubilee Bridge, prepared using the STAAD.pro software.

Member/Bearing Plate	Cross-section
Principal Rafters	HSST 20''x 20'' x 0.625'' (Rectangular Hollow Section)
Principal Ties	HSST 16''x 16'' x 0.625'' (Rectangular Hollow Section)
Struts and Slings	2, ISMC 350 face-to-face (toe-to-toe spacing = 0.3m)
Longitudinal & Cross-girders of bridge deck	ISLB 300
Bearing Plate	250 mm x 250 mm square

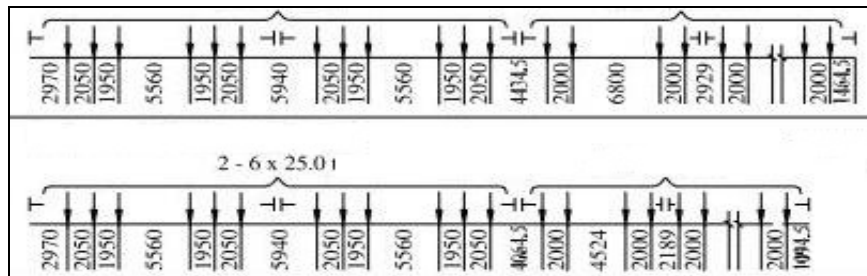


Fig. 4 Axle loading arrangement of 2L + 40 BOX type rake (shown above) and 2L + 55 BOXN type rake (Weight of each locomotive is 25 tonnes for both the cases).

E. Selection of the S-N Curve

Since the entire structure was built using rivets, the detail category of 71 depicted in IS code [4] is chosen to determine the number of cycles to fatigue (*N*) corresponding to the maximum stress ranges for each of the four types of rakes.

F. Formation of the Stress Range Spectrum

On the basis of the annual traffic load data of the bridge (Fig.5) and the axial stress values of the critical member obtained from computational analyses, the number of crossings and the stress range spectrum is computed. Similarly, stress range spectrum for the bearings, of both the inner and end supports, are calculated from the maximum and minimum bearing stress values. These were obtained from the resultant reaction forces acting on the bearings at the supports. To take into account the dynamic magnification of the stresses due to the velocity of the moving rake, a dynamic factor (ϕ) equal to 1.08 and 1.17, has been imposed on the bearing and axial stress ranges respectively, corresponding to the data available from literature [5]. The effect of the secondary stresses on the members (*K*), arising due to differences in the structural system as well as because of the eccentric connections, influence of assembly, etc.,

International Journal of Innovative Research in Science, Engineering and Technology

(An ISO 3297: 2007 Certified Organization)

Vol. 3, Issue 3, March 2014

is assumed to account for 5% of the primary maximum axial stress range ($\Delta\sigma$). Thus, The effective maximum stress range ($\Delta\sigma_{eff}$) is subsequently calculated from eqn. (1) [5]:

$$\Delta\sigma_{eff} = K\phi\Delta\sigma \tag{1}$$

The results of the entire computation to formulate the stress range spectrum for the bearings and members, as well as the number of crossings that is necessary for the computation of the damage accumulation of the most critical member and bearings of the structure by the Palmgren-Miner Rule [6], is tabulated in Table 2.

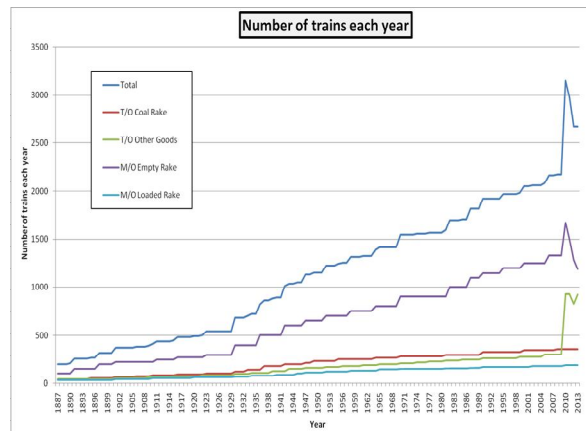


Fig.5. Annual Traffic Load data

Table 3. Stress range spectrum of the most critical truss member, inner support bearing and outer support bearing for the calculation of remaining fatigue life

	T/O Coal Rake	T/O Other Rake	M/O Empty Rake	M/O Loaded Rake
Number of crossings, N	25650	22419	84100	13423
Axial Stress Range Spectrum for the most critical truss member				
Maximum Axial Stress Range ($\Delta\sigma_{ax}$) in N/mm^2	822.12	605.52	339.94	510.17
Effective Axial Stress range ($K\phi\Delta\sigma_{ax}$) in N/mm^2	932.28	686.66	385.49	578.53
Number of cycles to fatigue failure of the most critical member	10000	30000	90000	40000
Bearing Stress Range Spectrum for a bearing on the end support				
Maximum Bearing Stress Range ($\Delta\sigma_{b,end}$) in N/mm^2	114.40	88.75	50.94	75.62
Effective Bearing Stress range ($K\phi\Delta\sigma_{b,end}$) in N/mm^2	133.84	103.84	59.60	88.48
Number of cycles to fatigue failure of the outer support bearing	175000	225000	700000	400000
Bearing Stress Range Spectrum for a bearing on the interior support				
Maximum Bearing Stress Range ($\Delta\sigma_{b,int}$) in N/mm^2	368.12	266.5	120.87	215.92
Effective Bearing Stress range ($K\phi\Delta\sigma_{b,int}$) in N/mm^2	430.7	311.81	141.42	252.63
Number of cycles to fatigue failure of the most critical member	60000	95000	300000	150000

International Journal of Innovative Research in Science, Engineering and Technology

(An ISO 3297: 2007 Certified Organization)

Vol. 3, Issue 3, March 2014

G. Calculation of the remaining fatigue life

1) Calculation of the remaining fatigue life of the most critical truss member

The damage accumulation for each of the four types of rakes is calculated and added up to obtain the total damage accumulation, as per the Palmgren-Miner Rule, as

$$\sum n_i/N_i = 25650/10000 + 22419/30000 + 84100/90000 + 13423/40000 = 4.58 > 1.0 \quad (2)$$

Since, the total damage accumulation comes out to be greater than one, it signifies that the most critical truss member of the bridge has no remaining fatigue life. Furthermore, it can be inferred from the annual traffic load data that the fatigue life for the most critical member had expired in the year 1972 as per the Palmgren-Miner Rule.

2) Calculation of the remaining fatigue life of the outer support bearing

The damage accumulation for each of the four types of rakes is calculated and added up to obtain the total damage accumulation, as per the Palmgren-Miner Rule, in the manner similar to Eq.(2), $\sum n_i/N_i$ is calculated to be 0.8. Since the total damage accumulation comes out to be lesser than one, it signifies that the outer bearing of the bridge has remaining fatigue life. Furthermore, it is can be inferred from the annual traffic load data that on maintaining the present scheme of loading, the fatigue life is expected to expire in the year 2016 as per the Palmgren-Miner Rule.

3) Calculation of the remaining fatigue life of the inner support bearing

The $\sum n_i/N_i$ value has been calculated to be 1.12 in this case. Since the total damage accumulation comes out to be greater than one, it signifies that the inner support bearing of the bridge has no remaining fatigue life and the fatigue life for the inner bearing has expired in the year 1999 as per the Palmgren-Miner Rule.

The results are summarized in Fig. 6. However, it can be noted that the above approach is deterministic. In practice, uncertainty is intensely involved in the analysis, especially from maintenance aspect. It is obvious that the outer bearing would be subjected to more corrosion and damage by the environment. Hence, it is expected that the outer bearing would suffer from fatigue damage earlier than that predicted.

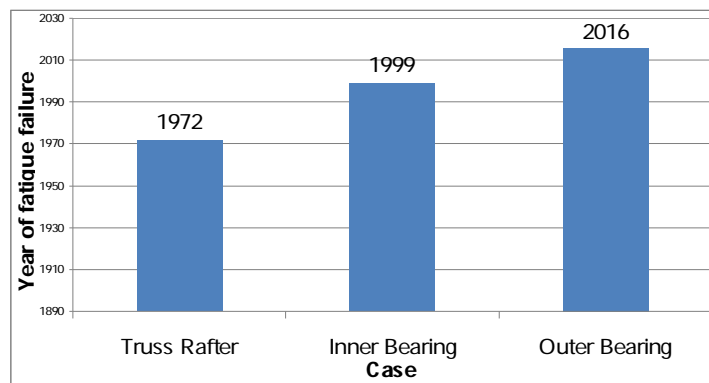


Fig.6. Fatigue life assessment of the bridge elements

It can be further noted that annual traffic load data for only past five years were available from the Railway archives. Rest of the traffic load data have been rationally assumed from the discussion with railway officers. This may lead to a gross overestimation of the total amount of loads that the bridge has been subjected to in the past. Owing to these gross and significant assumptions, the entire fatigue life assessment is approximate in nature and only a probabilistic analysis of remaining fatigue life would provide the more rational remaining fatigue life of the bridge.

IV. CONCLUSION

Fatigue life assessment of a century old railway bridge in India namely Jubilee bridge has been calculated following Eurocode 3. It has been observed that the remaining fatigue life of different members and bearings of the bridge has

International Journal of Innovative Research in Science, Engineering and Technology

(An ISO 3297: 2007 Certified Organization)

Vol. 3, Issue 3, March 2014

been exceeded in 2014 or on the verge of exceeding. Considering uncertainty and maintenance point of view the bridge, especially the outer bearing would be in more critical with respect to fatigue damage. Thus, it can be safely concluded that the bridge is no longer safe from fatigue point of view. In view of this fact, it is recommended that the Railway authorities take immediate action by adopting requisite remedial measures to either replace the failed or potentially failed members and bearings of the bridge or adopt suitable structural retrofitting measures to restore the bridge to a condition where an acceptable level of service could be expected from the bridge with a high degree of confidence. Since the data required for the detailed fatigue life assessment of the bridge was mostly unavailable or inaccessible from the Eastern Railway archives, we had to rely mostly on assumed data and quite a few simplistic assumptions for the requisite analysis. As a result, there is a large degree of uncertainty in the conclusion that has been obtained from this investigation. In order to account for this uncertainty in a proper manner, Probabilistic Fatigue Life Assessment of the Jubilee Railway Bridge may be performed in the future. This will allow us to gauge and assess the health of the structure, from the fatigue point of view, for different degrees of certainty and reliability and take necessary measures with a greater level of confidence.

ACKNOWLEDGMENT

The authors are grateful to Mr. Phalguni Biswas and other officers of Sealdah Division, Eastern Railway, India.

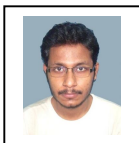
REFERENCES

- [1] *Eastern Railway Archives*, Sealdah Division, Indian Railways, India, 2013.
- [2] *Indian Railway FAQ Rolling Stock-II*, Archives of the Research Design and Standards Organization, Indian Railways, India, 2013.
- [3] *Indian Railway Standard Code of Practice for the Design of Steel or Wrought Iron Bridges (Steel Bridge Code)*, Version 1.2, Indian Railways, India, 2012.
- [4] *Eurocode 3, Design of steel structures General-fatigue strength, Part 1-9*, BS EN 1993 1-9, 2008
- [5] B. Kühn, M. Lukić, A. Nussbaumer, H.-P. Günther, R. Helmerich, S. Herion, M.H. Kolstein, S. Walbridge, B. Androic, O. Dijkstra, Ö. Bucak, "Assessment of Existing Steel Structures: Recommendations for Estimation of Remaining Fatigue Life," *JRC scientific and technical reports*, European Commission, Luxembourg, 2008.
- [6.] M. A. Miner, "Cumulative damage in fatigue," *J Appl Mech*, 12A, pp 169, 1945.

BIOGRAPHY



Kishore Ch. Misra, Research Scholar, BESUS, possesses wide experience in construction & maintenance of various bridge works like, Rehabilitation, Re-building, & Re-girding of Steel Rly-Bridges. His field of Interest is Fatigue life assessment of steel Rly. Bridges by probabilistic approach.



Debojyoti Panda is presently a final year Bachelors student in the Department of Civil Engineering, Bengal Engineering and Science University, Shibpur, India. He is a rank holder in the Bachelors programme and have research experience and technical papers in the field of material behaviour and design of biomaterials, smart materials, fatigue and fracture behaviour of metals.



Dr. Soumya Bhattacharjya is presently an Assistant Professor in the Department of Civil Engineering, Bengal Engineering and Science University, Shibpur, India. He has more than eight years experience in teaching, research and consultancy in various fields of Structural Engineering. His research interest lies in Probabilistic Structural analysis, design and optimization, Fatigue analysis of structures, Fibre reinforced composite and Behaviour of steel structure.