

Secure and Economical Data Transfer in Wireless Sensor Network using Cluster Approach

Kalokhe Komal A. ¹, Tamboli Mohasin B. ²

P.G. Student, Department of Computer Engineering, GHRCOEM College, Ahmednagar, Maharashtra, India¹

Assistant Professor, Department of Information Technology, GHRCOEM College, Pune, Maharashtra, India²

ABSTRACT: The implementation of this work aims to mean secure and low in cost records transfer in cluster based totally ordinarily wireless sensor network (WSNs). wireless sensor network with miscellaneous property traits like cluster node. Cluster is wise and in your price range way for enhancing system performance in phrases of node overhead. Hierarchical based data transfer is another name of cluster based data transfer. During this task the study of secure data transmission for cluster based in the main WSN anywhere, clusters square measure customary sporadically and dynamically. we have a tendency to planned 2 protocols for reasonable yet as relaxed data transmission supported Attribute based cryptography known as SET-ABE and SET-ABOOE (Attribute based online/offline encryption), which conjointly solves orphan node disadvantage every now and then came about in WSN.

KEYWORDS: Attribute-based Cryptography, Attribute-based online/offline Cryptography, Clustered WSNs, Secure Information Transmission Protocol.

I. INTRODUCTION

WSN is rigorous and giant assortment of allotted sensor nodes referred to as sensor gadgets, that square degree able to sensing info like condition, like sound, motion. Sensor node senses environmental situations and collects understanding from their domain space, processed them and send in the direction of sink node. Secure data transfer is most important difficulty for WSN. Normally, maximum of WSNs square measure deployed with tough, crude, delayed physical environment for army and useful resource domain with trust-less background. So, firmly data transmission is important and most practical imaginative and prescient in WSN. Wireless Sensor networks square degree normally deployed for accumulating expertise from unattended or opposed surroundings. Many utility specific Sensor network expertise accumulating protocols are planned in analysis literatures. However, most of the planned algorithms have given very little attention to the connected security troubles.

The present challenges in WSNs are:

1. Routing and Data transmission, for that they use a routing rule like LEACH, PEACH, youngster, APTEEN, PEGASSIS routing rule.
2. Statistics measure and computing functionality allocation.
3. Energy consumption.
4. Understanding sensing, expertise transmission, expertise collection, Information sharing for that they use an statistics forwarding subject to create a performance inexpensive approach.

International Journal of Innovative Research in Science, Engineering and Technology

(An ISO 3297: 2007 Certified Organization)

Vol. 5, Issue 6, June 2016

II. RELATED WORK

L. B. Jivanadham et al. planned creation of a Secured Cluster-primarily based layout for a Dynamic wireless sensor community that applies 2 topology control strategies: node circulate-in and node-flow-out. The deliberate safety protocol include one spherical zero data proof and AES algorithmic software to relate for node authentication, wherein completely documented nodes are going to be mentioned via node-bypass-in operation. additionally they described that, it dreams $O(h+q)$ rounds for a node to attach right into a network firmly, anywhere h is that the height of the dynamic cluster based wireless Sensor community and letter of the alphabet is that the style of adjoining nodes of a connection node. whilst the $O(h+q)$ makes an try and hitch the network, the node is considered as insecure and is sooner or later discarded from connection the community as in [1].

Hichem Sedjelmaci et.al deliberate accomplice in nursing intrusion detection framework for a cluster-based totally WSN (CWSN) that shall merge the benefit of anomaly and signature detection that vicinity unit excessive discovery fee and low fake fantastic, correspondingly. Wireless sensor networks (WSNs) have a big capability to be implemented in very essential situations like military and business applications. On the other hand, these applications area unit largely often instances to be deployed in unfavourable environment, anyplace nodes and communication location unit unique goals to intruders. This makes WSNs at risk of a selection of achievable assaults. as a result of their traits, conservative security techniques don't appear to be suited. Consequently right here the authors have planned associate in Nursing intrusion detection framework for a cluster-based WSN (CWSN) that interests to merge the gain of signature detection and anomaly that region unit high detection charge and coffee false effective, correspondingly as in [2].

Maan Younis Abdullah et al in inspected the problem of protection addition to cluster primarily based absolutely communicate protocols for undiversified wireless sensor networks containing sensor nodes with enormously constrained assets, and deliberates a safety decision anyplace clusters location unit created sporadically and dynamically. Their rationalization depicts re-keying operate protocol for wireless detector networks safety. they want projected the neighborhood frame operates (LAFs) as grasp feature, derivation carry out and rekeying operate is imprinted with detector node. A security and normal overall performance take a look at evidenced that it's far terribly skillful in verbal exchange, garage, computation and this approach is exceptionally prospering in protecting in the direction of lots of difficult assaults as in [3].

Tingyao Jiang et.al given a present day dynamic intrusion detection technique for cluster-based totally wireless Sensor networks (CWSN). The nodes in the course of a wireless detector network region unit assembled into clusters relying on the actual relationships with a cluster head (CH) in every cluster. The projected challenge be counted at the begin uses a clump algorithmic program to assemble a model of regular site visitors conduct, then uses this version of normal site visitors to discover bizarre site visitors patterns. beside the various community conditions of clusters, this gadget may additionally moreover dynamically set virtually distinct detection elements for numerous clusters to perform a additional accurate detection algorithmic software program. The performance have a look at showed that the projected intrusion detection methodology will development the detection accuracy and reduce the false effective rate, and is as an alternative low-price range of the power safety as in [4]

Nikolaos A. Pantazis et.al given a category of electricity maximum low in cost routing protocols and swollen the sort at the start one through way of Al-Kariki to better describe that troubles/operations in each protocol illustrate/ beautify the energy efficiency issues. The allocated conduct and dynamic topology of wireless sensor Networks (WSNs) brings in several unusual requirements in routing protocols that have to be consummated. the most critical aspect of a routing protocol, therefore on be finances pleasant for WSNs, is that the power utilization and consequently the extension of the networks generation. in some unspecified time in the future of the beyond few years, plenty of electricity reasonable routing protocols are projected for WSNs. The authors here given the 4 forms of schemes of energy cost effective routing protocols: community shape, communicate model, Topology primarily based and reliable Routing. The routing protocols that belong to the number one kind are frequently besides classified as hierarchal or flat. The routing protocols happiness to the convention OF, three 2d one type are regularly as properly labelled as question-based totally or Coherent and non coherent based totally or Negotiation-primarily based. The routing protocols happiness to the 1/three kind are often as properly categorized as region based definitely or cell Agent-primarily based completely. The

International Journal of Innovative Research in Science, Engineering and Technology

(An ISO 3297: 2007 Certified Organization)

Vol. 5, Issue 6, June 2016

routing protocols happiness to the fourth type are frequently similarly categorised as QOS based definitely or Multipath based totally. in the end, a scientific compare on strength low cost routing protocols for WSNs is supplied as in[5].

III. PROPOSED WORK

The identification based often mystery writing technique is not enough for securing community in addition because it required longer for authentication and faces orphan node downside, projected framework for efficient and comfy information transmission in wireless sensor community supported characteristic primarily based by and large encryption and by way of making use of cluster based totally in the main method finally ends up in cut returned load on nodes. Fig offers planned framework for online opinion summarisation. The inputs to the framework location unit, date and time, product name and assessment of that product. The output is Orphan node detection.

System carry out the summarisation in three steps:

- (1) Cluster Creation and CH election in each cluster in community;
- (2) Nodes region unit documented itself to the CH;
- (3) Expertise transmission and orphan node detection.

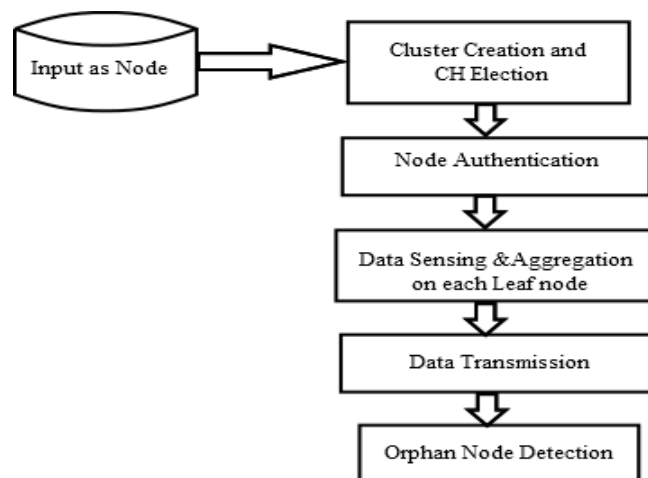


Fig1. System Architecture

More than one sub-steps location unit involved for acting those three steps:

WSN which includes mounted BS and each one leaf nodes, that area unit homogeneous in nature with identical practicality. The BS is regularly dependable and positive approved user, anyplace the sensing detail nodes might compromised by using unauthorized person and transmission direction should additionally be interrupted through unauthorized consumer. In WSN, sensing element nodes vicinity unit labelled into clusters and every cluster has CH nodes, which can be decide on arbitrarily. A Non-CH node (leaf node) joins clusters looking on power of received sign from BS. CH performs information collection and transmission towards BS with high strength than leaf node. Operation of LEACH protocol divided into 2 components which can be dispensed amongst range of sphericals each spherical embody separate setup component for forming clusters and constant section for expertise transmission from sensor nodes to BS through CH.

International Journal of Innovative Research in Science, Engineering and Technology

(An ISO 3297: 2007 Certified Organization)

Vol. 5, Issue 6, June 2016

IV. EXPERIMENTAL RESULTS

Experiments performed on totally different clusters created from WSN node i.e. N1,N2,N3 up to N10 having completely different power of each node which supplies ends up in time interval needed for all different node and cluster creation supported this solely the node that having high power become cluster head CH. This experiment result's shown in table

Node power for every cluster in network

Node	Node Power
N1	10
N2	5
N3	3
N4	2
N5	6
N6	4
N7	4
N8	8
N9	5
N10	5

Table 1:Node Power

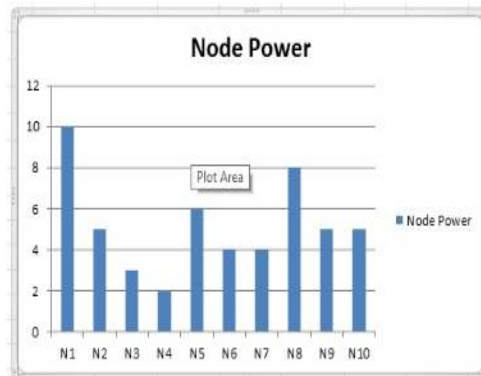


Fig 2 : Node Power

We can compare our system time with min interval and existing system time. Fig3 shows the comparison on node as input i.e. WSN node with the constraint time needed for min process, existing system time and projected technique with the various worth.

International Journal of Innovative Research in Science, Engineering and Technology

(An ISO 3297: 2007 Certified Organization)

Vol. 5, Issue 6, June 2016

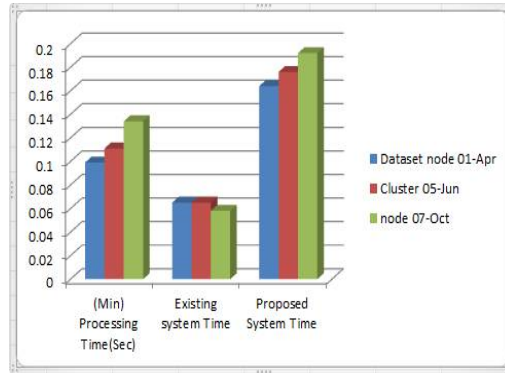


Fig3: Comparison based on Time Constraint on Node

V. CONCLUSION

In this Work we generally tend to studied completely exceptional knowledge transmission algorithmic application techniques, as a way to result in comfortable and competitively priced information transfer over WSN, like SET-ABE and SET-ABOOS supported attribute based totally mostly secret writing in addition it affords safety towards orphan node drawback that is took place throughout cluster formation and data transmission. Because of use of hierarchical layout presents powerful load balanced and identical energy consumption on each node. the utilization of SHA-1 algorithmic software for authentication and DES for lay node verbal exchange can enhance secure environment at some stage in data transmission in cluster based totally often Intrusion detection system. In future work, we generally tend to try to growth accuracy in node cluster and so as to cut back node overhead for information transmission and authentication.

VI. ACKNOWLEDGMENT

We would want to bring all of the authors of assorted analysis papers referred throughout scripting this paper. It have been extraordinarily Information gaining and beneficial for the any analysis to be drained in future.

REFERENCES

- [1] Jivanadham, L.B, Islam, A.K.M.M., Mansoor, N., Baharun, "A Secured Dynamic Cluster-Based Wireless Sensor Network", 2012 Fourth International Conference, Publication Year, Page(s): 223- 228, 2012.
- [2] Sedjelmaci, H.; Senouci, S.M.; Feham, "Intrusion detection framework of cluster-based wireless sensor network", M.Computers and Communications (ISCC), 2012 IEEE Symposium Publication, Page(s): 857- 861, Year: 2012.
- [3] Abdullah, M.Y., Gui Wei Hua, "Cluster-Based Security for Wireless Sensor Networks", Communications and Mobile Computing, CMC '09. WRI International Conference on Volume: 3, Page(s): 555- 559, Publication Year: 2009 .
- [4] Tingyao Jiang, Gangliang Wang, Heng Yu, "A dynamic intrusion detection scheme for cluster-based wireless sensor networks", World Automation Congress (WAC), Page(s): 259- 261, Publication Year: 2012 .
- [5] Nikolaos A. Pantazis, Stefanos A.Nikolidakis, Dimitrios D.Vergados,Energy-Efficient Routing Protocols in Wireless Sensor Networks, A Survey IEEE Communications surveys tutorials, vol. 15, no. 2, second quarter 2013 6
- [6] Kun Zhang, Cong Wang, Cuirong Wang, Wireless Communications, Networking and Mobile Computing, 2008, WiCOM 2008. 4th International Conference, Page(s): 1- 5, Publication Year: 2008.
- [7] Yasmin, R., Ritter, E.; "An Authentication Framework for Wireless Sensor Net works using Identity-Based Signatures", Guilin Wang Computer and Information Technology (CIT), 2010 IEEE 10th International Conference, Page(s): 882- 889, Publication Year: 2010
- [8] Huang Lu, Jie Li, Kameda, "A Secure Routing Protocol for Cluster-Based Wireless Sensor Net works Using ID-Based Digital Signature ." Global Telecommunications Conference (GLOBECOM 2010), Page(s): 1- 5, Publication Year: 2010
- [9] Nguyen Xuan Quy, Mingi Kyun, Dugki Min, "Security enhanced energy-efficient data aggregation for cluster based wireless sensor networks",Internet, 2008. ICI 2008. 4th IEEE/IFIP International Conference, Page(s): 1- 5, Publication Year: 2008
- [10] Abdul Gani Khan,Abdur Rahman, Neeti Bisht "Classification of Hierarchical Based Routing Protocols for Wireless Sensor Networks", International Journal of Innovations in Engineering and Technology, ISSN:2319-1058,Special Issue-ICAECE-2013
Huang Lu, Jie Li, Mohsen Guzani "Secure and Efficient Data Transmission for Cluster-Based Wireless sensor Networks", IEEE TRANSACTION ON PARALLEL AND DISTRIBUTED SYSTEMS, VOL. 25, NO. 3, MARCH 2004.