

Finest Pattern Along with Rising Protocols in Wireless Sensor Networks

J.Indhumathi¹, S.Gandhimathi²

Research Scholar, Dept. of Computer Science and Applications, PGP College of Arts & Science, Namakkal,
Tamilnadu, India¹

Head of the Department, Dept. of Computer Science and Applications, PGP College of Arts & Science, Namakkal,
Tamilnadu, India²

ABSTRACT: Wireless detector network is rising field thanks to its wide applications in varied fields and least value. A wireless detector network could be a cluster of little detector nodes that communicate through radio interface. These detector nodes square measure composed of sensing, computation, communication and power as four basic operating units. however restricted energy, communication capability, storage and information measure square measure the most resource constraints. Our survey relies on varied aspects of wireless detector networks. during this paper we have a tendency to conjointly mentioned varied styles of WSNs, their applications and in short discuss varied classes of routing protocols.

KEYWORDS: WSN, Sensor nodes, Applications, Sensor Networks types, Routing Protocols.

I. INTRODUCTION

A wireless device network is outlined as a set of an oversized variety of small low power, low value and multi-functional device nodes that area unit arbitrarily and extremely distributed either within the system or terribly near it. device nodes that area unit terribly little in size contains a sensing unit, processing unit, and geographic positioning system, power provide unit like battery or photovoltaic cell and human activity elements like radio systems.

The position or location of those little device nodes needn't be absolute and that we will get position of the node mistreatment GPS; this not solely provides random placement however additionally implies that protocols of device networks and its algorithms should possess self organizing skills in inaccessible areas. Distributed or distributed device networks (DSNs) have recently emerged as a very important analysis space. This development has been spurred by advances in device technology and pc networking.

It's economically possible to implement DSNs, however there area unit many technical challenges that has got to be overcome before DSNs may be used for today's progressively advanced operation tasks. WSNs have each civilian and military applications embody scene reconstruction, setting watching, motion chase and detection, battleground watching, remote sensing, worldwide awareness, etc. they're sometimes time-critical and canopy an oversized realm, and want reliable delivery of correct data for his or her completion of operation.

TYPES OF WIRELESS SENSOR NETWORKS

According to antecedently analysis work done 5 styles of wireless sensing element networks square measure doable relying upon wherever and the way sensors square measure put in to observe information. in keeping with these properties of sensing element readying we will classify WSNs into 5 basic sorts namely; ground (terrestrial) WSN, underground WSN, aquatic (underwater) WSN, multi-media WSN, and mobile WSNs..

Ground (Terrestrial) WSNs

Generally comprises a whole bunch to thousands of cheap wireless detector nodes deployed willy-nilly during a given sensing space. In circumstantial preparation, detector nodes is born from a plane and willy-nilly placed into the target. during a ground (terrestrial) WSN, reliable communication during a dense atmosphere is incredibly vital.

International Journal of Innovative Research in Science, Engineering and Technology

(An ISO 3297: 2007 Certified Organization)

Vol. 5, Issue 9, September 2016

Ground (Terrestrial) detector nodes should be ready to effectively communicate information back to the bottom station. whereas battery power is restricted energy resource and its is main constrain on network performance and it's going to not be replaceable or reversible once more, ground(terrestrial) detector nodes but is equipped with a secondary power supply like battery or cell. Thus because of this it's continuously vital for detector nodes to conserve energy. For a ground(terrestrial) WSN, energy is preserved with short transmission vary, multi-hop routing, eliminating information purity, in-network information aggregation, minimizing delays, and exploitation low duty-cyclic operations.

Underground WSNs

Collection of variety of detector nodes placed within crust of earth or in an exceedingly cave or in an exceedingly mine and that they square measure wont to monitor underground events like volcanic conditions etc. additional sink or base station nodes square measure settled higher than crust of earth to transmit data from the detector nodes to the sink (base station). These form of WSN square measure rather more pricey than a ground (terrestrial) WSN in terms of readying, equipment, and maintenance. Underground detector nodes square measure dearer as a result of necessary instrumentality elements should be hand-picked to confirm reliable communication through rocks, soil, water, and different contents residing within crust. the interior conditions surroundings makes wireless communication a challenge owing to high levels of attenuation and signal losses.

not like ground WSNs, the readying of associate underground WSN needs careful coming up with and energy and value concerns. Energy is a very important constraint in underground WSNs. Like ground (terrestrial) WSN, underground detector nodes square measure equipped with a restricted battery power supply and once deployed into the crust or ground , it's troublesome to recharge or replace a detector node's battery.

Aquatic (Underwater) WSNs

It carries with it variety of sensing element nodes and vehicles deployed within water. As opposite to ground (terrestrial) WSNs, aquatic (underwater) sensing element nodes square measure dearer and fewer sensing element nodes square measure deployed in sensing region. Autonomous aquatic (underwater) vehicles square measure used for exploration or gathering information from sensing element nodes. As compared to a dense readying of sensing element nodes in an exceedingly ground WSN, a thin readying of sensing element nodes is placed confused level (underwater). Typical aquatic (underwater) wireless communications square measure enforced through transmission of acoustic waves.

Multi-media WSNs

Combination of variety of low value detector nodes equipped with microphones and cameras. These detector nodes interconnected with one another over a wireless association for information sensing, processing, information correlation, and information compression. Multi-media WSNs are accustomed modify observance and pursuit of events within the style of transmission applications.

Mobile WSNs

Collection of moving detector with their interaction with sensing atmosphere. Moving detector nodes have the capability to sense, compute, and communicate like non-moving nodes. Mobile WSNs area unit employed in military and different industrial applications

II. SENSOR NETWORK ARCHITECTURE DESIGN

A Wireless detector network is outlined as a network of such a large amount of little low value, disposable, low power devices, known as detector nodes, that square measure willy-nilly distributed so as to perform their assigned tasks like weather watching, hearth sensing etc.

This detector nodes kind a network by interacting with alternative one another either directly or via other nodes. There'll be base station conjointly referred to as sink that is placed far from sensing field. This sink or base station is capable of act with the user either directly or through the present wired networks. the first elements of the network square measure the detector nodes that square measure needed for watching physical conditions like atmospheric condition like temperature, humidity, intensity, vibration, pressure, motion, pollutants etc. These small detector nodes, that contain a sensing unit, a processor for processing, and act elements, native knowledge storage like

International Journal of Innovative Research in Science, Engineering and Technology

(An ISO 3297: 2007 Certified Organization)

Vol. 5, Issue 9, September 2016

memory unit, Figure two shows the structural read of a Wireless detector network during which detector nodes square measure pictured as little circles.

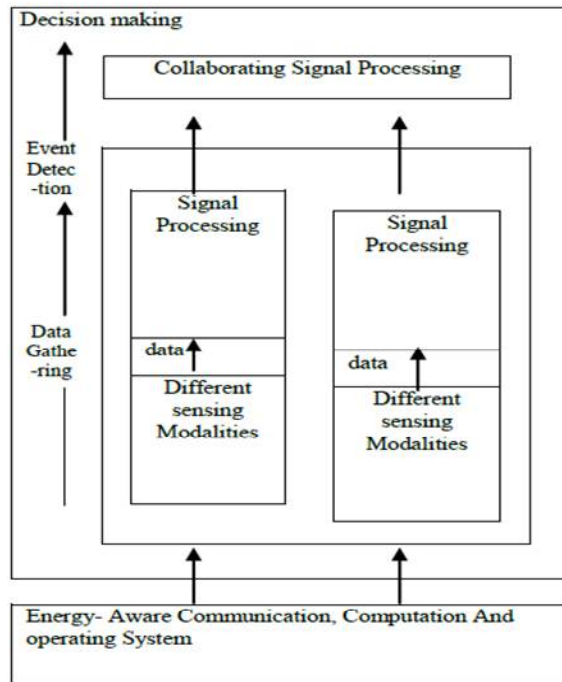


Fig1. Block diagram of DSN from functionality point of view

The device unit contains a device and ADC (Analog to Digital Converter). The sensing unit is chargeable for sensing knowledge consistent with ADC commands, so returning the analog knowledge it senses. ADC may be a translator that tells the C.P.U. what the device unit has detected, and additionally commands the device unit what to try to do. Communication unit is accountable to receive command or question from and transmit the info from C.P.U. to the bottom station or sink. C.P.U. is chargeable for playing knowledge operations like knowledge removal, knowledge aggregation etc. electromagnetic unit provides power to whole nodes system. every node may additionally contain 2 elective elements like location finding system and mobilizer to seek out the information of location with high accuracy.

III. WIRELESS SENSOR NETWORKS APPLICATIONS

According to literature survey we are able to categorise the applications of WSNs into Defence applications, forest applications, bioscience applications, Domestic applications, and industrial applications:

Defence applications:

WSNs can be an integral part of defense command, security control, data communications, computation, intelligence, targeting systems such as (C4ISR), surveillance, reconnaissance etc.

Forest applications:

Some environmental applications of sensor networks include tracking and recording the movements of small animals, birds and insects, monitoring environmental conditions, earth monitoring and exploration.

Medical Science applications:

Some of the health applications for sensor networks are diagnosing the patients, tracking location and movement of patients and doctors inside hospital etc.

International Journal of Innovative Research in Science, Engineering and Technology

(An ISO 3297: 2007 Certified Organization)

Vol. 5, Issue 9, September 2016

Industrial applications:

Some industrial applications of WSNs are building virtual keyboards, monitoring product quality, environmental control in office buildings, robot control, interactive toys etc.

IV. ROUTING SCHEMES IN WIRELESS SENSOR NETWORKS

Routing is outlined as a method of finding a path between the supply node and also the sink or destination node to perform information transmission. In WSNs the network layer is usually accustomed implement the routing of the incoming information. As we all know that usually in multi-hop networks the supply node cannot reach the sink node directly. So, intermediate sensing element nodes ought to forward their packets to the destination nodes. The formation of routing tables offers the answer. These contain the lists of node possibility for any given packet destination. Routing table is that the task of the routing formula in conjunction with the assistance of the routing protocol for his or her construction and maintenance.

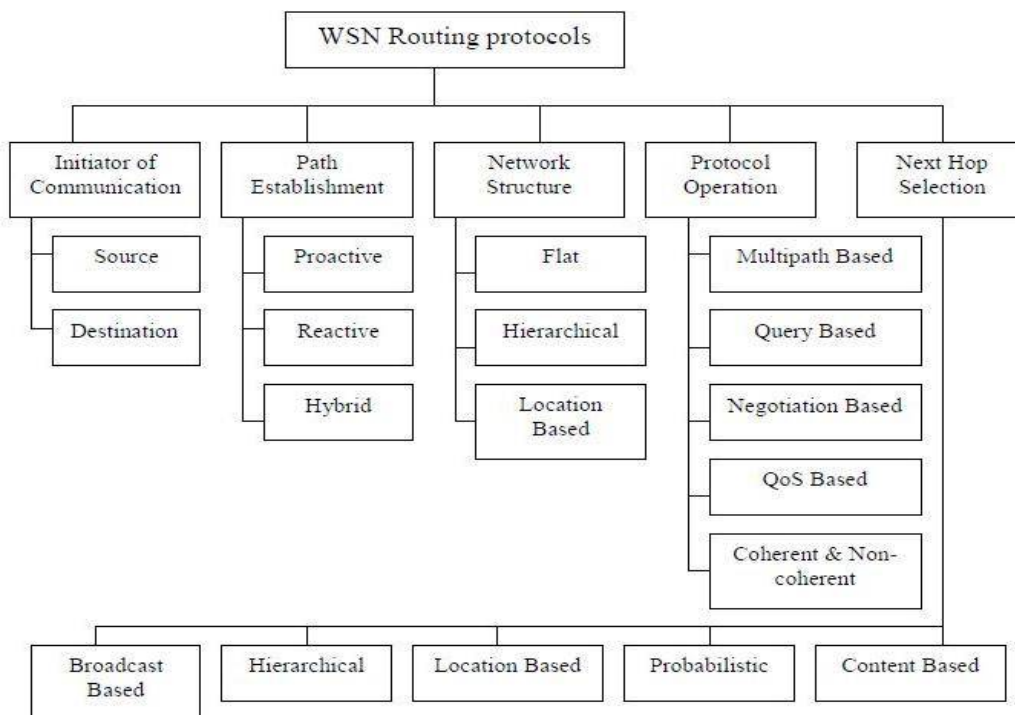


Figure 2.WSN Routing Protocols Classification

A. PATH ESTABLISHMENT BASED ROUTING PROTOCOLS

According to path institution based mostly routing protocols routing methods are established in keeping with 3 types; proactive protocol, reactive and hybrid protocol. Proactive protocols are those quite protocols those cipher all the routes before they're truly needed so store these routes during a routing table gift at every node. Whereas reactive protocols are those styles of protocols those cipher routes only if they're needed. Hybrid protocols use a mixture of each proactive and reactive routing protocols.

- **Proactive Protocols:**

Proactive routing protocols square measure those routing protocols those maintain consistent and proper routing tables of all network nodes by victimization periodic broadcasting of routing info throughout the network. Here during this class of routing protocols all routes square measure computed before their actual demand. These routing protocols may be used each in flat and stratified structured networks. The benefits of flat proactive routing square

International Journal of Innovative Research in Science, Engineering and Technology

(An ISO 3297: 2007 Certified Organization)

Vol. 5, Issue 9, September 2016

measure their ability to reckon optimum path that required overhead for this computation that isn't acceptable in several things.

- **Reactive Protocols:**

A reactive routing protocol comes beneath on demand routing protocol class. in order that they don't maintain the world data of all the nodes in a very network. Here the route institution between supply and destination relies on demand per the need of the network. so as to get a route from supply to destination a route discovery question and so route reply strategy is followed. Hence, in reactive routing methodology, route choice is on demand by victimization route question packets before route institution.

- **Hybrid Protocols:**

Hybrid Protocols square measure combination of each proactive and reactive routing protocol. This routing methodology is applied to massive networks. These protocols use cluster approach that makes the network a lot of stable and ascendible. The network structure is split into several clusters and these clusters square measure maintained dynamically and if a node is additional or left a selected cluster then this sort of methodology uses proactive technique once routing is needed inside clusters and reactive technique once routing is needed across the clusters.

B. NETWORK BASED ROUTING PROTOCOLS

Protocols that square measure divided consistent with the structure of network that is incredibly crucial for the desired operation square measure comes underneath the class of network primarily based routing protocols. The protocols come underneath this class square measure more divided into 3 subcategories consistent with their operations. These protocols square measure,

Flat-Based Routing:

Flat primarily based routing is needed wherever an outsized quantity of device nodes area unit needed and every and each node plays same role. Since here range the amount the quantity of device nodes area unit terribly massive thus it's unfeasible to assign a specific identification (Id) number to every and each node. It results in data-centric routing strategy during which sink node sends question to a bunch of specific nodes in an exceedingly sensing field and waits for his or her responses. Few samples of Flat-based routing protocols are:

- Energy Aware Routing (EAR).
- Sequential Assignment Routing (SAR).
- Directed Diffusion (DD).
- (MCFA).
- Sensor Protocols for info via Negotiation (SPIN).
- Minimum value Forwarding rule
- Active question forwarding in device network (ACQUIRE).

Hierarchical-Based Routings:

Hierarchical based mostly routing strategy is best match in those things once network quantifiability and economical communication is needed. it's additionally called cluster based mostly routing protocols. Hierarchical-based routing is energy economical methodology within which higher energy nodes are haphazardly hand-picked as cluster heads for process and sending knowledge towards base station wherever as low energy nodes are used for sensing and send info to their cluster heads. During this method hierarchical-based routing helps mostly to the network quantifiability, period sweetening and minimum energy consumption. Some out there hierarchical-based routing protocols are;

- Hierarchical Power-Active Routing (HPAR).
- Threshold sensitive energy economical detector network protocol (TEEN).
- PEGASIS

International Journal of Innovative Research in Science, Engineering and Technology

(An ISO 3297: 2007 Certified Organization)

Vol. 5, Issue 9, September 2016

- Minimum energy communication network (MECN).

Location-Based Routing:

In these sorts of network topography, device nodes are at random scattered in a part of interest and largely familiar by their geographic position wherever they're put in. They're largely located by means that of GPS technique. The gap between device nodes is calculated by the strength of signal received from those nodes and coordinates are calculated by exchanging data between near device nodes. Few location-based routing protocols are:

- Sequential assignment routing (SAR).
- Ad-hoc positioning system (APS).
- Geographic adjustable fidelity (GAP).
- Greedy alternative adjustable face routing (GOAFR).
- Geographic and energy aware routing (GEAR).
- Geographic distance routing (GEDIR).

C. OPERATION BASED ROUTING PROTOCOLS

WSNs applications are categorized according to their functionalities. Hence routing protocols are classified according to their functions to meet these functionalities.

1. Multipath Routing Protocols:

Multipath routing protocols are a unit those routing protocols those give multiple path choice for a message to achieve its destination so increasing network performance and decreasing delay in network. attributable to enhanced overheads higher network dependability is achieved through causing periodic messages network ways are a unit unbroken alive and thence larger energy is consumed. Multipath routing protocols are:

- Multi path and Multi SPEED (MMSPEED).
- Sensor Protocols for info via
- Negotiation (SPIN)

2. Query Based Routing Protocols:

Query primarily based routing protocols works by causing and receiving queries for knowledge. during this class the destination node sends question of interest from a node through network and node with this interest matches the question and remand to the node that initiated the question. The question is often written in high level languages. question primarily based routing protocols are:

- Sensor Protocols for info via Negotiation (SPIN).
- Directed Diffusion (DD).
- COUGAR.

3. Negotiation Based Routing Protocols:

Negotiation based mostly routing protocols uses high level knowledge descriptors for the removal of redundant knowledge transmissions through negotiation method. usually these protocols create intelligent selections either for communication or different actions supported facts such what proportion resources are a unit gift. Negotiation based mostly routing protocols are a unit

- Sensor Protocols for data via Negotiation (SPAN).
- Sequential assignment routing (SAR).
- Directed Diffusion (DD).

4. QoS Based Routing Protocols:

QoS based mostly routing protocols, network needed to possess a balance approach for the QoS of applications of system. Here the applying may be delay sensitive thus to realize this QoS metric. Here network need to look additionally for its energy consumption that is another metric once act to the sink. thus so as to realize QoS, the price operate for the required QoS additionally must be mentioned. samples of such routing are:

- Sequential assignment routing (SAR).

International Journal of Innovative Research in Science, Engineering and Technology

(An ISO 3297: 2007 Certified Organization)

Vol. 5, Issue 9, September 2016

- SPEED.
- Multi path and Multi SPEED (MMSPEED).

5. Coherent and non-coherent processing:

In the operation of wireless sensing element networks processing may be a major part. Hence, routing techniques follow completely different processing techniques. There are two kinds of processing based mostly routing.

6. Non-coherent data processing:

In this class of knowledge process, sensing element nodes can domestically method the data before being transmitted to different nodes for more process of knowledge. The sensing element nodes that perform more process of knowledge area unit referred to as the aggregators.

7. Coherent data processing:

In coherent processing based mostly routing, when minimum process the information is forwarded to aggregators. The minimum process primarily includes tasks like duplicate suppression, time stamping etc. once all detector nodes are sources and send their knowledge to the central mortal node, a large quantity of energy are consumed and therefore this method encompasses a higher price.

D. INITIATOR OF COMMUNICATION BASED ROUTING PROTOCOL

Communication primarily based Routing Protocol depends on the communication between network parts, wherever they often in sleep mode temporary. once any a part of a network, the sink (destination, base station) node or the supply node, wants service from different a part of network, it'll initiate the routing with different half to send or receive the management or information packets.

- Source leader Routing Protocol
- Destination leader Routing Protocol

E. NEXT-HOP SELECTION BASED ROUTING PROTOCOLS

1. Content-based routing protocols:

Content-based routing protocols confirm the next-hop on the route strictly supported the question content. this kind of routing protocols fits the foremost to the design of device networks, since the bottom station don't question specific nodes rather it requests just for information in spite of its origin.

- Directed Diffusion.
- GBR.
- Energy Aware Routing.

2. Probabilistic routing protocols:

These protocols supported assumption that each one device nodes area unit haphazardly deployed and homogeneous. By victimization this routing protocol, next-hop neighbour for every message to be forwarded area unit haphazardly hand-picked by nodes and likelihood of choosing an exact neighbour is reciprocally proportional to its price.

3. Location-based routing protocols:

These protocols choose the next-hop towards the destination supported the noted position of the neighbours and also the destination. The position of the destination might denote the center of mass of an area or the precise position of a selected node. Location-based routing protocols will avoid the communication overhead caused by flooding, however the calculation of the positions of neighbours might result further overhead. The native minimum downside is common for all suburbanised location-based routing protocols: it'd happen that every one neighbours of

International Journal of Innovative Research in Science, Engineering and Technology

(An ISO 3297: 2007 Certified Organization)

Vol. 5, Issue 9, September 2016

AN intermediate node area unit farther from the destination than the node itself. so as to avoid this downside, each protocol uses totally different routing techniques.

- GEAR (Geographical and Energy Aware Routing).

4. Hierarchical-based routing protocols:

In case of stratified protocols, all nodes forward a message for a node (also referred to as aggregator) that's in an exceedingly higher hierarchy level than the sender. every node aggregates the incoming information by that they cut back the communication overload and conserve a lot of energy. Therefore, these protocols increase the network life and that they are well-scalable. The set of nodes that forward to a similar somebody is termed cluster, whereas the somebody is additionally referred as cluster head. Cluster heads area unit a lot of resourced nodes, wherever resource is mostly means their residual energy is more than the typical. the explanation is that they're traversed by high track and that they perform a lot of computation (aggregation) than different nodes within the cluster. stratified routing is especially two-layer routing wherever one layer is employed to pick cluster heads and therefore the different layer is employed for routing.

- LEACH (Low Energy adjustive agglomeration Hierarchy) protocol.

5. Broadcast-based routing protocols:

In broadcasting based mostly routing protocols every sensing element node within the network decides severally whether or not to forward a message or not. that the functioning of those protocols is extremely easy. Thus if a node decides to forward message, it merely re-broadcasts the message and if it declines to forward message, the message are going to be born.

- MCFA (Minimal price Forwarding Algorithm).

V. CONCLUSIONS

Wireless sensing element Networks square measure one in every of the rising fields in analysis space. A wireless sensing element network features a outstanding feature to observe environmental and natural phenomenon such square measure temperature, pressure, wetness etc. during this paper we tend to mentioned numerous aspects of wireless sensing element networks and additionally mentioned numerous forms of WSNs and their applications and classify numerous classes of routing protocols. The routing protocols in WSN has become one in every of the foremost necessary analysis areas and introduced distinctive challenges compared to ancient knowledge routing in wired networks. the most aim behind the routing protocol style is to stay the sensors in operation for an extended time, so extending the network life time. Though several routing protocols are projected for sensing element networks, several problems still stay to be addressed.

REFERENCES

- [1] S.K.Singh, M.P. Singh and D. K. Singh, "Routing Protocols in Wireless Sensor Networks –A Survey", International Journal of Computer Science & Engineering Survey (IJCSSES), Vol.1, No.2, November 2010.
- [2] I.F. Akyildiz, W. Su*, Y. Sankarasubramaniam, E. Cayirci. "Wireless Sensor Networks: a survey", Published by Elsevier Science B.V.,ISSN: 1389-1286/02/\$, Vol. 38 ,Page No. 393–422, December 2001.
- [3] Jun Zheng and Abbas Jamalipour, "Wireless Sensor Networks: A Networking Perspective", a book published by A John & Sons, Inc, and IEEE, 2009.
- [4] Nikolaos A. Pantazis, Stefanos A. Nikolidakis and Dimitrios D. Vergados " Energy-Efficient Routing Protocols in Wireless Sensor Networks: A Survey" IEEE communications surveys & tutorials, ISSN: 1553-877,Issue No.2,Vol.15,Page No. 551-591, Second quarter 2013.
- [5] Kemal Akkaya, Mohamed Younis"A Survey on routing protocols for wireless sensor network,"2 Nov 2010.
- [6] I. Akyildiz, W. Su, Y. Sankarasubramaniam, and E. Cayirci,"A Survey On Sensor Networks", IEEE Communications Magazine, Volume 40, Number 8, pp.102-114, 2002.
- [7] Akkaya, K. and Younis, M., " A survey on routing protocols for wireless sensor networks", Ad Hoc Networks, Vol 3, Page No. 325–349,2005.
- [8] I.F. Akyildiz, W. Su, Y. Sankarasubramaniam, and E. Cayirci, "A Survey on Sensor Network", IEEE Communication Magazine, vol. 40, no. 8, Aug. 2002, pp. 102-114.
- [9] Kemal Akkaya and Mohamed Younis, "A Survey on Routing Protocols for Wireless Sensor Networks", Ad hoc Networks, vol. 3, no. 3, May 2005, pp. 325-349.



ISSN(Online) : 2319-8753
ISSN (Print) : 2347-6710

International Journal of Innovative Research in Science, Engineering and Technology

(An ISO 3297: 2007 Certified Organization)

Vol. 5, Issue 9, September 2016

- [10] Hussein Mohammed Salman, "Survey of Routing Protocols in Wireless Sensor Networks", International Journal of Sensors and Sensor Networks, Vol. 2, No. 1, 2014.
- [11] Jennifer Yick, Biswanath Mukherjee, Dipak Ghosal, "Wireless sensor network survey", computer networks, ISSN: 1389-1286, Vol. 58, Page No. 2292-2330, April 2008.
- [12] Ritika Sharma, Nisha Thakur Sachin Kumar, "Review paper on wireless sensor networks", Proc. of the Intl. Conf. on Recent Trends In Computing and Communication Engineering – RTCCE, ISBN: 978-981-07-6184-4, Page No. 255-258, 2013.