

Pedal Powered Corn Deseeding

Aniket Kelkar¹, Akshay Nanekar², Akshay Kad³, Shashikant Kad⁴, S.N.Patil⁵

UG Scholar, Dept. of Mechanical Engineering, P K Technical Campus, Savitribai Phule Pune University, India^{1,2,3,4}

Professor, Dept. of Mechanical Engineering, P K Technical Campus, Savitribai Phule Pune University, India⁵

ABSTRACT: Corn is developed on little scale by ranchers in creating nations like India. Corn is sold by ranchers with cob. The normal portion cost is roughly double the cost of cob. Henceforth, more salary can be produced by ranchers if corns are decorticated and portions are sold independent from anyone else in the market. Be that as it may, this requires a shoddy, physically worked and proficient corn Sheller. Absence of corn preparing machines i.e. corn Sheller, is a noteworthy issue of corn generation, particularly in our nation India. A review composed, manufactured, and execution of a corn Sheller comprising of nourish container with a stream rate control gadget, shelling unit, isolating unit and power framework. The execution of the machine was assessed as far as throughput limit, shelling productivity, material proficiency and mechanical harm. Relapse models that could be utilized.

KEYWORDS: Pedal Powered, Corn Design, Chain, Freewheel.

I. INTRODUCTION

The recorded significance of pedal controlled machines can be barely noticeable by individuals who became usual to fossil fills and universal Electricity. In this manner it can't be focused on enough the amount of a change Pedal power was in the light of a huge number of years of human drudgery. Pedals and Cranks make utilization of human power in a close –optimum. All machine apparatuses Employed in machine for creation process can be Broadly ordered into: Special Purpose Machine (SPM) Special Purpose Machine SPM are intended to perform just particular operations.

- They can create any number of indistinguishable things.
- They are utilized as a part of large scale manufacturing.
- The rate of creation in SPM is high.
- The cost of SPM is high.
- The cost of SPM can be legitimized on the off chance that it is utilized for large scale manufacturing.
- SPM are worked for a specific item and if the item plans changes, the machine may not be useful.
- But the different units of SPM might be utilized as a part of the development of another SPM.
- SPM are not made in mass but rather they are created according to arrange or just in little amount.
- E.g. Capstan Lathe, Turret Lathe, Gun Drilling Machine, Transfer Machine and so on.

II. LITERATURE REVIEW

Corn shelling is dependably a run of the mill work as it needs accuracy and deliberately shelling of Corn, so as the Corn wouldn't break while shelling. Shelling physically is wasteful process. We are attempting to make a power worked machine which can enhance profitability helps of benefit of shelled Corns and lessen exertion. So taking after writings were considered for planning of our venture demonstrate. [2] Corn is the Third biggest oat delivered on the planet with a pattern of rising creation in India. The typical range for Corn in India was 77.27 lakh hectares with generation around 150.91 lakh tones in the year 2007. Rajasthan has the biggest zone 10.62 lakh hectares under development among all states with aggregate generation of 21 lakh tones. Four strategy for Corn shelling in particular shelling cob grain by hand, octagonal Corn Sheller, hand worked Corn Sheller and beating by stick technique were conveyed for expelling Corn portion from the cob. For ergonomically assessment ten male farming subjects of 25-35 yr age gathering were arbitrarily Literature Review of Corn Sheller Machine (IJIRST/Volume 2/Issue 01/032) chose for

International Journal of Innovative Research in Science, Engineering and Technology

(An ISO 3297: 2007 Certified Organization)

Website: www.ijirset.com

Vol. 6, Issue 2, February 2017

study. Exhibit customary strategy for shelling Corn has turned out to be wasteful, difficult, tedious and low yield. The vitality use rate was most astounding for beating by stick strategy (3.84 kcal/min) and least for octagonal Corn Sheller (1.52 kcal/min). Generally Corn is sifted by shelling cob grain by hand and beating the cob by stick. At present Corn shelling has been enhanced by the utilization of tubular Corn Sheller and hand worked Sheller. The vitality consumption rate was most astounding for beating by stick strategy (3.84 kcal/min) and least for octagonal Corn Sheller (1.52 kcal/min). Vitality use rate for shelling cob grain by hand and octagonal Corn shelling operation could be scaled in "light" classification of work load. While the hand worked Corn Sheller and beating by stick strategy could be scaled as in "Light" classification of work load. For Corn shelling operations octagonal Corn Sheller and hand worked Corn shelling are better than shelling cob grain by hand and beating by stick Method. In paper [3] the creator learned about the monetary circumstance in most creating nations have left agriculturists and processors working at the little scale, consequently the utilization of mechanized and electric power driven gear is constrained to the couple of extensive scale ventures. The impact of the ergonomic parameters to be specific; weight, age, tallness and a safe distance in connection to the subsequent efficiencies; shelling productivity, cleaning proficiency, mechanical harm and rate loss of a hand fueled Corn Sheller were considered It was seen by the creator that age is more corresponded with weight than a safe distance. From the outcomes acquired in this review, the accompanying conclusions were drawn; the shelling productivity increment with increments in weight of the administrator and altogether with age and a safe distance. The heaviness of the administrator has an extraordinary impact when driving the machine. The mechanical harm saw from the execution assessment has low connection with the ergonomic parameters.

III. METHODOLOGY

In this venture we are utilizing cycle's construct outline in light of which the corn cutting gathering is mounted. For slicing food is given to cutter with the assistance of chain drive And movement is made with the assistance of pedal. Material utilized as a part of this venture M.S pipe, point, chain and cutter with help of this we are making gathering. Cutter is made by throwing process. Movement is made with the assistance of pedal. Material utilized as a part of this venture M.S pipe, edge, chain and cutter with help of this we are making gathering. Cutter is made by throwing process.

CONSTRUCTIONS and DESIGN

There are some major parts related to these projects.

Main frame.

Sprocket.

Freewheel

International Journal of Innovative Research in Science, Engineering and Technology

(An ISO 3297: 2007 Certified Organization)

Website: www.ijirset.com

Vol. 6, Issue 2, February 2017

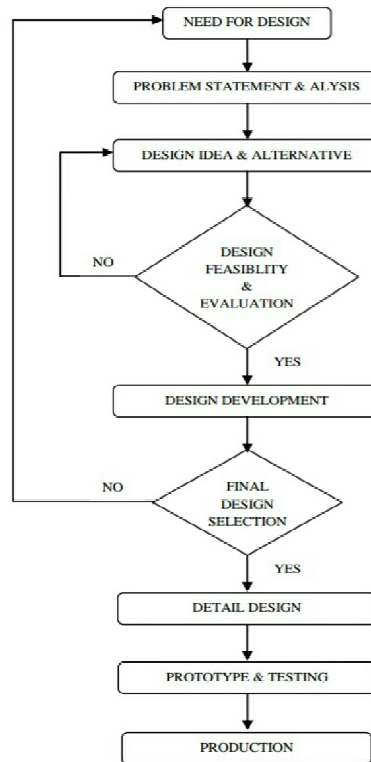


Fig 1. Flow chart of methodology

A. CHAIN

A bicycle chain is a roller chain that exchanges control from the pedals to the drive-wheel of a bike, in this manner moving it. Most bike chains are produced using plain carbon or amalgam steel, however some are nickel-plated to avoid rust, or just for style. Nickel additionally gives a measure of self-oil to a chain's moving parts. Nickel is a moderately non-annoying metal. A bike chain can be extremely vitality effective: one review revealed efficiencies as high as 98.6%. The review, performed in clean research center oil a bigger sprocket will give a more effective drive, lessening the development edge of the connections. Higher fasten pressure was observed to be more proficient: "This is really not in the heading you'd expect, construct basically with respect to grating"

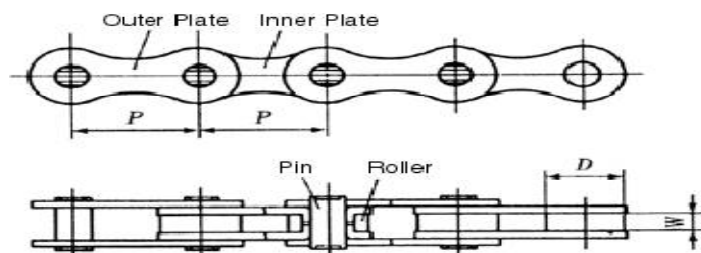


Fig.2 chain

International Journal of Innovative Research in Science, Engineering and Technology

(An ISO 3297: 2007 Certified Organization)

Website: www.ijirset.com

Vol. 6, Issue 2, February 2017

FREEWHEEL/ OVER RUNNING CLUTCH

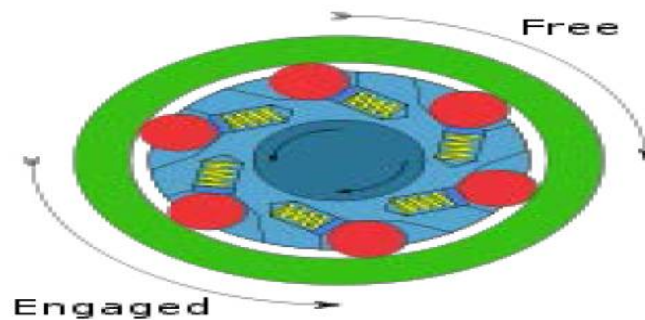


Fig 3. Clutch

In mechanical or car building, a freewheel or invading grip is a gadget in a transmission that separates the driveshaft from the determined shaft when the determined shaft pivots speedier than the driveshaft. An overdrive is now and then erroneously called a freewheel, yet is generally inconsequential. The state of a determined shaft turning speedier than its driveshaft exists in many bikes when the rider holds his or her feet still, no longer pushing the pedals. In a settled apparatus bike, without a freewheel, the back wheel would drive the pedals around.



MECHANICS

The most straightforward freewheel gadget comprises of two saw-toothed, spring-stacked plates squeezing against each other with the toothed sides together, to some degree like a ratchet. Pivoting in one course, the saw teeth of the drive plate bolt with the teeth of the determined circle, making it turn at a similar speed. In the event that the drive plate backs off or quits pivoting, the teeth of the determined circle slip over the drive plate teeth and keep turning, delivering a trademark clicking sound proportionate to the speed distinction of the determined rigging in respect to that of the (slower) driving apparatus.

A more refined and tough outline has spring-stacked steel rollers inside a determined chamber. Turning in one course, the rollers bolt with the chamber making it pivot as one. Pivoting slower, or in the other course, the steel rollers simply slip inside the chamber. Most bikes freewheels utilize an inside stride toothed drum with at least two spring-stacked, solidified steel pawls to transmit the heap. More pawls help spread the wear and give more noteworthy unwavering quality albeit; unless the gadget is made to resilience's not typically found in bike parts, concurrent engagement of more than two pawls is seldom accomplished.

International Journal of Innovative Research in Science, Engineering and Technology

(An ISO 3297: 2007 Certified Organization)

Website: www.ijirset.com

Vol. 6, Issue 2, February 2017

II. THRESHING EQUIPMENT

There are different sorts of sifting hardware, every sort obliging contrasting sizes of creation and conditions (e.g. household utilize, co-possession by little agriculturists, use by autonomous rancher on a day by day contract bases, proprietorship by custom or dealer factories) ranchers frequently utilized little hand make turning shellers which are generally straightforward, viable, economical and genuinely tough. They are accessible from numerous producers from both creating and industrialized nations this sort. Any creating nation ought to have the capacity to fabricate this kind of thresher. The last are of different plans and are produced using a little number of iron castings. They use a spiked circle to prize out the grain while the cob is held by a customizable spring – stacked weight plate. While the limits of various machines shift, these will in any event twofold the rate of the most gainful hand – held gadgets.

The bigger, free – standing threshers are more beneficial and helpful, yet more costly. They are frequently with cleaning and partition gadget for the evacuation of undesirable material. The generally expansive size of maize grain encourages the utilization of both cleaning fans for the overwhelming of the tidy and light particles, and of basic responding strainers for the expulsion of sand, stripped cob focuses and broken or undersized grain. Contingent upon the kind of thresher and on the quantity of administrators utilized, the limit of these machines can be four circumstances bigger than that of the littler revolving threshers. This might be clarified by the utilization of low – contact direction and of basic equipping which result in unflinching and working rates. The sifting standards are like those of the littler thresher. One principle contrast is the substitution of the spring stacked weight plate by a moderately low speed sustain roller which strengths cob into the sifting component. The outline and estimating of huge threshers permit the utilization of option drive techniques, for example, little electric or petrol engines. These threshers are reasonable for little – scale trader factories. The full –sized, diesel or electrically – fueled sifting machines, with limits of a few times each hour, speak to the typical hardware utilized as a part of substantial number or scale, completely automated circumstances. Countless create their own particular plans available to be purchased through typical horticultural gear providers. No institutionalized plan exists, yet most thresher utilize comprehensively comparative working standard. These sifting machines are accessible in an assortment of establishments use inside a factory requires a settled establishments, with related dealing with and bolstering offices fitted close by. Versatile establishments are likewise accessible; they are either wheeled or mounted on tractors. The high rates of throughput require the utilization of cob stacking lifts and stowing gear. Most threshers use a pegged drum, mounted on a flat shaft, which turns at around 700,000 rpm. A curved metal screen, with openings approximating to the extent of the grain is situated around the drum. It contains the cobs while shelling happens. An astound plate confines the stream of the cobs, and keeps up the required shelling weight. A solid fan releases the stripped cobs focuses and other substantial flotsam and jetsam. A moment, littler fan is regularly utilized at the grain release point for the evacuation of the rest of the clean and better particles. Accessible data demonstrates that a normal sifted grain yield of 900kg/hr/introduced kw/h might be gotten from these threshers.

Application Example

These chains transmit the power of pedaling to the back wheel (Figure 1.16). Most bikes use chain; a few styles use cog belts, but these are the exceptions. In the early stages of chain development, chain design grew in response to development in bicycles. Bicycles are categorized as shown in Table 1.7. In addition to bicycles, these chains may be used in low-speed, light-load transmission operations, for example, in agriculture machines or with electric garage door openers.

Construction and Feature

Bicycle Chains are generally categorized into two types: $1/2 \times 1/8$ and $1/2 \times 3/32$. The first number ($1/2$) is the chain pitch; the latter numbers ($1/8$ and $3/32$, respectively) indicate the inner width in inches. Number $1/2 \times 1/8$ chain is used for simple transmission without speed shifting; it has the same construction as Standard Roller Chain. Number $1/2 \times 3/32$ chain is used with a derailleur. There are two types of Construction standard roller and bushing less. In the bushing less chain the inner link plates are extruded so that the inner plates also serve as the bushings. In most derailleur transmission chains, the link plates are bent or cut so that the chains can change smoothly on the front or rear

International Journal of Innovative Research in Science, Engineering and Technology

(An ISO 3297: 2007 Certified Organization)

Website: www.ijirset.com

Vol. 6, Issue 2, February 2017

sprockets. 3.2 SPROCKETS The basic sizes of the sprockets (front and rear) are common to all manufacturers; however, the tooth shape is different. This is especially true for the sprockets for 1/2 3 3/32 chains. Each manufacturer designs its own tooth shapes for better shifting. Exercise care when changing sprockets.



Fig. 4 sprocket

A sprocket or sprocket-wheel is a profiled wheel with teeth, pinions, or even sprockets that work with a chain, track or other punctured or indented material. The name "sprocket" applies by and large to any wheel whereupon are outspread projections that connect with a chain disregarding it. It is recognized from an apparatus in that sprockets are never coincided together straightforwardly, and varies from a pulley in that sprockets have teeth and pulleys are smooth. Sprockets are utilized as a part of bikes, bikes, autos, followed vehicles, and other hardware either to transmit rotating movement between two shafts where apparatuses are unsatisfactory or to bestow straight movement to a track, tape and so forth. Maybe the commonest type of sprocket is found in the bike, in which the pedal shaft conveys a huge sprocket-wheel which drives a chain which thus drives a little sprocket on the pivot of the back wheel. Early autos were likewise to a great extent driven by sprocket and chain instrument, a practice to a great extent duplicated from bikes. Sprockets are of different plans, a greatest of productivity being asserted for each by its originator. Sprockets ordinarily don't have a spine. A few sprockets utilized with timing belts have spines to keep the planning belt focused. Sprockets and chains are likewise utilized for power transmission starting with one shaft then onto the next where slippage is not allowable, sprocket chains being utilized rather than belts or ropes and sprocket-wheels rather than pulleys. They can be keep running at fast and a few types of chain are so developed as to be silent even at rapid.



Fig 5. Threshing unit of corn

International Journal of Innovative Research in Science, Engineering and Technology

(An ISO 3297: 2007 Certified Organization)

Website: www.ijirset.com

Vol. 6, Issue 2, February 2017

Deseeding of the corn might be completed with a unique gadget introduced inside the sifting machine. The standard strategy for deseeding is to give sets of contra-pivoting rollers whose projections pull the husk far from the cob. It is conceivable to shell and husk maize, in spite of some loss of limit, inside the sifting areas itself. Notwithstanding, it is prescribed to get the guidance of individual makers on the practicability of this approach. The working lifetime of the different segments of these machines ought to be moderately high since no wearing or rubbing parts are utilized. In this way, the requirement for extra parts, for example, course, drum part and screws ought to be moderately low. Nonetheless, contrast in materials of development does happen and not run of the mill substitution rates can be quoted. No gifted work is required to run these machines since it is just important to physically sustain the cobs and discard the grain and cob focuses. The quantity of workers utilized affects the work rate of the machines especially that of the littler units with un-automated

Measurement of Efficiency

The efficiency of threshing in maize threshers can be defined as the ratio of the weight of threshed maize to the weight of maize. The total weight of maize is obtained by adding the weight of the threshed maize to the weight of maize remaining on the cobs after threshing.

$$\text{Threshing efficiency (\%)} = \frac{x}{x+y} \times 100$$

Where X = weight of machine threshed grains

Y = weight of corn remaining of the cobs after threshing.

III. CHAIN DRIVE

A chain drive is another type of an adaptable connector gadget which can differ much like a belt drive, transmit control between shafts separated a significant separation (up to 8m) separated. It comprises basically of a driving and driven toothed sprocket. Set on parallel shafts and associated by a perpetual chain. Most sorts of the chain drives utilized as a part of the practice likewise have different snugness, lubricators, and castings. As opposed to belt drive which work attributable to contact between the belts and pulleys, chain drives relies on upon their operation on the work between the sprocket teeth and the chain joints. Along these lines, they can keep up the fancied speed proportion at a similar level all through the operation, require no underlying strain (subsequently getting the poles and direction), and demonstrate an expanded proficiency (up to 0.98). The chain contract edge is for less basic for a chain drive than the belt contract plot for a belt drive. As a result, chain drives can securely be utilized at rapid proportion with their poles introduced rather near one another or where power is to be transmitted to a few shafts in the meantime, with a few shafts turning in inverse bearings. Chain drives are littler in size, misfortune less influence in grinding, and are much less expensive in support than belt drives. Additionally chain being inalienably more grounded than belts, they can deal with heavier burdens than their belt partners. Chain drive are particularly compelling where not more than 100kw of force is to be transmitted at a fringe speed of up to 15ms⁻¹ and a speed proportion of up to 8. Chain drives might be utilized as both stride down and venture up transmission (the last been utilized in bikes). Utilized by man from time immemorial, chains have by the by lost none of their significance. Today, chain drives can be discovered basically wherever from an unassuming family unit to a noteworthy modern plant. Obviously, chain drives are not by any stretch of the imagination free from hindrances. Essentially, these can be ascribed to the chordal activity of the chain. The chain joints go around the sprocket as a progression of harmonies as opposed to as a nonstop circular segment. Thus, the speed of the chain is throbbing, figuratively speaking, rather than being uniform which is particularly articulated at higher velocities and with less teeth. This develops the back of the connecting pins and in result, extends the chain pitch, subsequently ruining the work. In this way, chain drives are once in a while excessively loud in operation and have, making it impossible to withstand extra element loads.

EXPERIMENTAL VALIDATION WORKING PRINCIPLE

A sifting machine is utilized to isolate the grain from the straw and other light materials. It is, basically, a three-stage prepare: In the main stage, packs of grain and straw were pitched into the feeder (or container). The feeder controlled

International Journal of Innovative Research in Science, Engineering and Technology

(An ISO 3297: 2007 Certified Organization)

Website: www.ijirset.com

Vol. 6, Issue 2, February 2017

the rate of bolster going into the machine to forestall over-burdening. In actuality, the rate at which the groups were pitched into the container likely had more impact on the rate than the container itself.

In the second stage, the separator, a quickly pivoting set of edges (unmistakable toward the finish of the feeder), first shredded the groups, breaking the twine and snapping the heads from the straw, then beat the straw and heads onto a notched plate, thumping parts from the heads without pounding them. The straw then disregarded a straw rack that expelled the greater part of the straw from the portions. Whatever went through fell onto a progression of dynamically littler shaking screens, evacuating the vast majority of the staying straw and debris from the pieces. In the third stage, the cleaner, parts that went through the last screen were moved over a flood of air that blew the staying straw and waste away. The cleaned bits then fell into a container to be hoisted to a measuring gadget before being dumped into sacks or passed on to a storage facility. The straw and debris were smothered onto the straw stack by a bigger, more grounded blower.

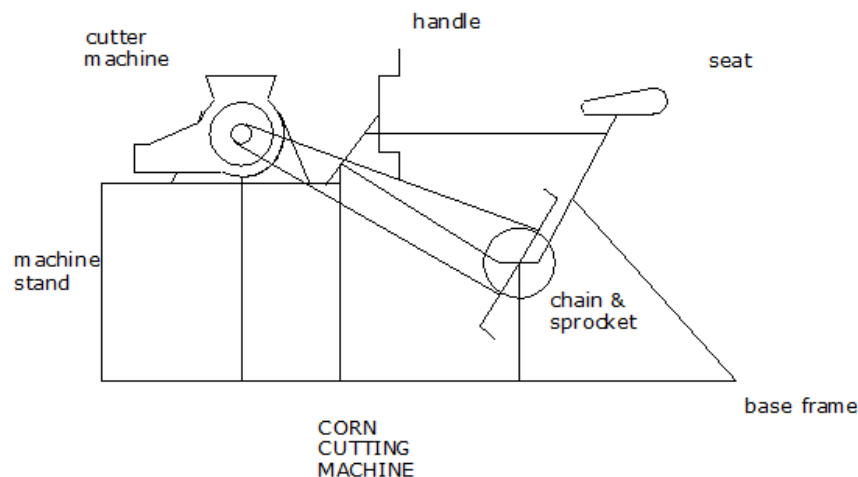


Fig 6. Pedal operated corn deseeding machine.

ADVANTAGES

- Operation is moderately sheltered.
- It is reasonable for large scale manufacturing.
- Spare power.
- Diminish human endeavors.
- Giving is simple.
- No talented work to work this machine.

IV. CONCLUSION

The de-seeding machine has been outlined, created and manufactured remembering the imperatives and necessities of the Indian agriculturists. The deseeding machine was tried in the machine shop and later taken to the field. It functioned admirably in the field conditions and gives a superior yield. The mobility of the gadget is very great and the dealing with is very straightforward. The seed releasing instrument is successful and corn seeds can be released off effortlessly. For business reason one can enhance the productivity of the gadget adequately by expanding the extent of the gadget and giving it different heads. Furthermore, the de-seeder is a multifunctional machine that can de-seed different sorts of sustenance thing, for example, corn, rice, nippy driving, potato past, de-husking and so on. This should be possible by changing the drum and teeth.



ISSN(Online) : 2319-8753
ISSN (Print) : 2347-6710

International Journal of Innovative Research in Science, Engineering and Technology

(An ISO 3297: 2007 Certified Organization)

Website: www.ijirset.com

Vol. 6, Issue 2, February 2017

REFERENCES

1. Anant J. Ghadi 1 and Arunkumar P2, DESIGN, DEVELOPMENT AND FABRICATION OF A LOW COST CORN DESEEDING MACHINE, IJRET: International Journal of Research in Engineering and Technology Volume: 03 Issue: 08 | Aug-2014.
2. Y.V. Mahatale and V.P. Pathak "Physiological Evaluation of Different Manually A. Operated Corn Shelling Methods"
3. Ilori T. A., Raji A. O and O. Kilanko "Modeling Some Ergonomic Parameters B. with Machine Parameter using Hand Powered Corn Sheller"
4. C. B. Ashwin Kumar and ShaikHaneefa Begum "Design, Development and Performance Evaluation of a Hand Operated Maize Sheller"
5. D. PratimaPandey, JwalaBajrachrya and S Pokharel" Influence of Corn Seed Processing with a Locally Produced Sheller On Seed Quality and Their Damage"
6. Oriaku E.C, Agulanna C.N, Nwannewuihe H.U, Onwukwe M.C and Adiele, I.D"E. Design and Performance Evaluation of A Corn De-Cobbing and Separating Machine"