

Automatic Detection and Segmentation of Breast Cancer from 3D MR and CT

Chiman Haydar Salih¹, Doç. Dr. Rıdvan Saraçoğlu², Dr.Laith Rezouki Flaih³

M.Sc. Student, Department of Electrical and Electronics Eng., Institute of Natural and Applied Science,
YüzüncüYıl University, Van, Turkey¹

Associate Professor, Department of Electrical and Electronics Eng., Faculty of Engineering,
YüzüncüYıl University, Van, Turkey²

ABSTRACT: Breast cancer is the one of dangerous type of cancer that causes severe effects in breast tissues of human body. The work provides the automatic detection of breast cancer from 3D MRI and CT images by using four step processes. First step we take the MRI image as input image and we pre-processing of an image, then removes the noise by using the median filter image enhancement. Next step we implement the segmentation which matches the image with points. Third step our proposed method segments the images by using the Linde-Buzo-Gray algorithm (LBG) and watershed algorithm. Fourth step we detect and classify the normal or breast cancer region by using knowledge based breast detection technique which constructs the breast cancer location. Finally our proposed work result shows the normal and benign and malignant region location.

KEYWORDS: ANN,Breast cancer, Classification,Image Enhancement, Segmentation LBG algorithm, Watershed segmentation.

I. INTRODUCTION

The breast tumor is a growth that develops from a breast tissue. Side effects of a breast tumour may have a swelling in the bosom, an adjustment in bosom nature, fat of the skin, fluid originating from the areola, or else a red textured support of skin. In there might be jaw torment, swollen lymph hubs, shortness of breath, or else yellow skin. Chance issues for creating bosom disease contain being female, belatedness, and absence of physical work out, hormone substitution treatment amid menopause, drinking liquor, ionizing radiation, and early age at first monthly cycle, having kids late or else not under any condition, more seasoned age, and family history. Around 5 to10% of cases is because of qualities acquired from a man's folks, including BRCA1 and BRCA2 among others. Bosom malignancy most, by and large, creates in cells from the covering of drain tubes and the lobules that supply the conduits with drain. Growths creating from the tubes are known as ductal carcinomas, while those creating from lobules are known as lobular carcinomas. In including, there are more than 18 other sub-classifications of a breast tumour. Certain tumours, for example, ductal carcinoma in situ, create from pre obtrusive injuries. The investigation of bosom growth is affirmed by taking a biopsy of the concerning irregularity. Once the finding is made, extra tests are done to characterize if the malignancy has spread outside the bosom and which medicines it might reaction (Kumar, et al.,2014).Implement some type of picture upgrade procedures in connection to mammograms likewise MR and CT Images highlights from the mammogram to group the mammogram to ordinary and irregular. In this manner, the outline and improvement of exact CAD framework to recognize irregularities in early phases of developing abatement the possibility of human demise required. The most widely recognized imaging advancements utilized are Computed Tomography (CT) and Magnetic Resonance Imaging (MRI). Photography has differentiated among MRI and CT with from various purposes of view (Kwong et al. ,2003).

International Journal of Innovative Research in Science, Engineering and Technology

(An ISO 3297: 2007 Certified Organization)

Website: www.ijirset.com

Vol. 6, Issue 1, January 2017

II. RELATED WORK

In this section describes the works and projects who have related to this study.

Sreekumari et al (2016) reported that (Breast Lesion Detection and Characterization with 3D Features) Automated Breast Ultrasound (ABUS) is very compelling as bosom malignancy screening aid innovation. Mechanization can extraordinarily enhance the proficiency of the clinician filtering over the quantum of information in ABUS volumes to spot injuries. We have actualized a completely programmed bland calculation pipeline for location and portrayal of sores on such 3D volumes. We think about an extensive variety of qualities for locale depiction on their viability at the double objectives of injury location and portrayal. On various element pictures, we process district descriptors at injury hopeful areas deterring the requirement for evident sore division.

Sridhar et al., (2013) reported that (Qualitative Detection of Breast cancer by morphological curve let transform) Restorative picture division is a vital issue in therapeutic imaging. This paper introduces a program picture division technique for tumour location. A Computer-Aided Diagnostic (CAD) framework since the determination at kind-hearted also harmful of Computed Tomography (CT) pictures are displayed. Suggested paper portrays the advancement at division technique in the handling of pictures acquired utilizing curve lets and scientific morphology. Curve let change is a multi-scale change that able to speak the edges along bends a great deal more productively. The recreated pictures delineate change in recognizable proof of installed harmful tumours over the deferral and total calculation. Fruitful location and restriction of tumours as little as 2.5 mm in measurement are likewise illustrated.

Giannini et al., (2010) reported that (A Fully Automatic Algorithm for Segmentation of the Breasts in DCE-MR Images) Programmed division at the bosom and an assistant area is an imperative pre-handling venture for programmed injury recognition in bosom MR and element differentiate improved MR contemplates. In this paper, we show a completely programmed methodology in light of the identification of the above outskirts to the chest muscle. Contrasted and past strategies in light of threes holding, this technique is more powerful to clamor and field inhomogeneities. Technique was quantitatively assessed toward 31 cases procured since two focuses by contrasting the outcomes and a manual division. Comes about show great general assertion inside the reference division (overlap=0:790:09, recall=0:95 0:02, precision=0:82 0:1)

III. EXISTING METHOD OF CANCER DETECTION

A-MRI OF THE BREAST

Attractive Due to resonances is the most appealing contrasting option for Mammography. X-ray exists touchy to recognizing a few tumours that could be missed by mammography. What's more, MRI can assist radiologists and different masters decide how to remedy breast growth patients by recognizing the phase to the illness. Exceptionally powerful for the picture a great many breasts surgery or radiation treatment. To be successful, differentiate improved bosom MRI is completed by infusing at the patient's body of a paramagnetic difference operator. The strategy depends on the speculation that later the infusion at the operator, irregularities improves several than typical tissues because of theirs expanded vascularity, vascular porousness, also interstitial spaces (S.Heywang-Kobrunner et al., 1995). Magnetic Resonance Imaging (MRI) 3D is not compressed picture. What's more, it can prosecute with every one of the women containing who are not fitting to mammography, for instance, adult women together due to thick chest too women with silicone-filled chest embeds. Since it uses appealing fields, MRI hasn't perilous outcomes for Human rights bodies (Zhen et al., 2001).

B- IMAGE PROCESSING INSTRUMENTS TO TUMOUR DETECTION IN MRI BREAST

Ago screening MRI Breast is as of now the standard test for early identification of the breast tumor, an immense digit of MRI should be analysed near a set number of radiologists, coming about determinations because of human mistakes by visual weakness. To enhance the analytic exactness and productivity, PC helped conclusion has been brought into

International Journal of Innovative Research in Science, Engineering and Technology

(An ISO 3297: 2007 Certified Organization)

Website: www.ijirset.com

Vol. 6, Issue 1, January 2017

the screening procedure. At present, there are a few picture preparing strategies proposed for the recognition of tumors in MRI and CT picture (Zheng et al.,2001).

B.1. Image Enhancement Filtering

The image processing to concentrate some worldwide elements inside a picture. Wavelets are capacities that fulfil certain necessities, wavelet originates from the prerequisite that they ought to incorporate to zero, "waving "above and beneath the x-hub. The modest essence of wavelet recommends the capacity must be very much confined For discrete wavelet change (DWT), a picture is spoken to as far as interpretations and enlargements of a scaling capacity and a wavelet capacities. Afterward one level of deterioration, a picture is separated into four sub-groups: LL (Low-Low), whichever is created by the estimation coefficients; LH (Low-High), HL (High-Low), and HH (High-High), which are produced by the detail coefficients (Chikkerur et al.,2007).

B.2. Smoothing Image

The primary point of picture smoothing is to expel clamor in computerized pictures. It is a traditional matter in computerized picture preparing to smooth picture. What's more, it has been broadly utilized as a part of many fields, for example, picture show, picture transmission and picture investigation, etc. (Zhiyuan et al., 2005).

B.2.1. Gaussian Smoothing

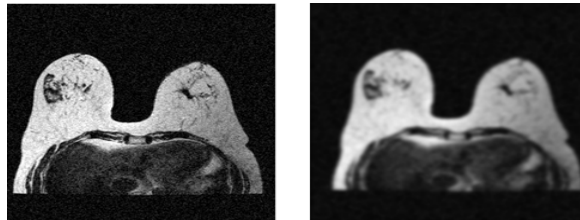


Figure 1. Example of Gaussian Smoothing.

B.3. Image Segmentation

Image segmentation is an among level preparing method usage to dissect the image also can be characterized as a handling strategy usage to order or bunch a picture into a few disjoint parts by gathering the pixels to shape an area of homogeneity in view of the pixel attributes similar dark level, shading, surface, power and different components. The principle reason for the division procedure is to get more data in the area of enthusiasm for a picture which helps in the comment of the questioning scene (Sumiet al., 2010).

B.3.1. Lined-Buzo- Grey (LBG).

B.3.2. Watershed Segmentation.

B.4. Feature Extraction

Surface components are removed from the breast cancer. Include extraction step is critical stride to get high arrangement rate. An arrangement of components is removed keeping in mind the end goal to permit a classifier to recognize typical and anomalous example. The anomaly can be recognized on the premise of textural appearance Extricated elements are utilized as a part of a neural classifier to prepare it for the acknowledgment of specific class either ordinary or unusual. The capacity of the classifier to appoint the obscure protest then a right class is subject to the separated components.

B.4.1. Gray Level Co-occurrence Matrix(GLCM)

B.5. Classification

Artificial Neural Networks (ANN) has been created as speculations of numerical models of organic sensory systems. The first influx of enthusiasm for neural systems (otherwise called connectionist models or parallel appropriated preparing) developed after the presentation of streamlined neurons by McCulloch and Pitts (1943). The fundamental star ceasing components of neural systems are called fake neurons, or essentially neurons or hubs. There are three types of classification (Normal, Benign, Malignant) (Stanford JL, et., 1995).

B.6.Cancer Detection

B.6.1.Early of Cancer Detection: Early recognition of disease incredibly expands the odds for fruitful treatment. There are two noteworthy segments of an early location of malignancy: training to advance early determination and screening. Perceiving conceivable cautioning indications of malignancy and making brief move prompts to early analysis.(Anonymous, 2016a).(as show Figure 2).

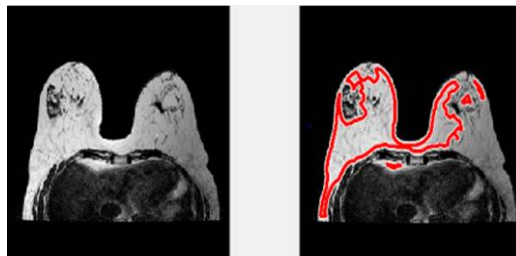


Figure .2.Early of cancer detection.

B.6.2.Late of cancer Detection:

There are numerous conceivable reasons for the late conclusion. Most patients analysed along these lines have brought down odds of survival contrasted with different patients. There can be various explanations behind deferrals in growth determination. For instance, a few people may defer on the grounds that they're stressed over what the specialist may discover or they would prefer not to squanderthe specialist's chance (Anonymous, 2015b). (as show Figure 3).

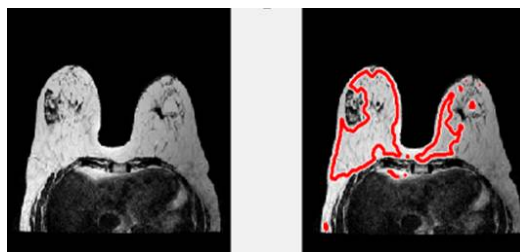


Figure.3. Late of Cancer Detection.

International Journal of Innovative Research in Science, Engineering and Technology

(An ISO 3297: 2007 Certified Organization)

Website: www.ijirset.com

Vol. 6, Issue 1, January 2017

IV. PROPOSED SYSTEM

Our proposed work gives the recognizable proof and division of breast tumor in the human body from the MRI and CT pictures by using four phase shapes. Starting stride we take the test picture as MRI picture and after that, picture upgrade (picture change). Next, walk our proposed methodology smoothing channel. Third step we parcel the chest ailment territory from the run of the mill region by using the Linde-Buzo-Gray count (LBG) which sections the MRI pictures by using vector quantization framework. It recognizes the correct position of a chest range. At that point include extraction and grouping of malignancy location. (as show Figure 4)

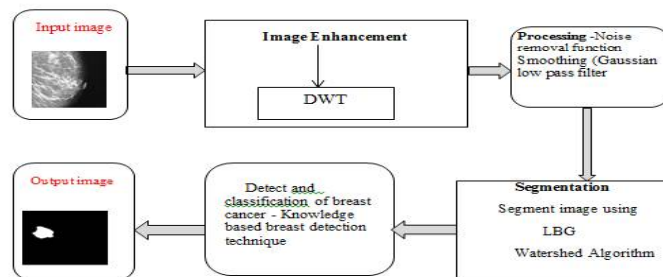


FIGURE.4.PROPOSED SYSTEM DIAGRAM

V. RESULTS

In this study we have 40 people MRI database, it contains 400 pictures it means one person 10 images and divided by two dataset train and test. Finally, our proposed work result shows the normal and benign and malignant region location. This table is described the three types. This project also includes the construction of Graphical User Interface (GUI) in Matlab. In the implementation of the result of this study we used 2-fold cross-validation. (show Table 1).

Table 1.The Classification results of three types of data.

	Normal	Malignant	Benign
Precession	%87	%77	%94
Recall	%60	%90	%93

IV. CONCLUSION

Image handling is a technique in the medicinal image. The proposed approach is calculation discovery for breast tumor of restorative picture image MRI and CT. The CAD system has tremendously helped the radiologists as they do not need a second opinion from doctors. Moreover, the hit ratio is comparatively higher. This reduces the negative reports about the existence of breast cancer and helps identify cancer in early stages. Thus the treatment process can be more effective. It is also reported that the linear method of classification proves more efficient because of the linearity in the data set. The classifier was able to vividly demarcate the different cancer cells as benign or as malignant.

International Journal of Innovative Research in Science, Engineering and Technology

(An ISO 3297: 2007 Certified Organization)

Website: www.ijirset.com

Vol. 6, Issue 1, January 2017

REFERENCES

1. Kumar, N., Kumari, P., Ranjan, P., &Vaish, A. (2014, May). ARIMA model based breast cancer detection and classification through image processing. In Engineering and Systems (SCES), 2014 Students Conference on (pp. 1-5). IEEE.
2. Kwong, R. Y., &Yucel, E. K. (2003). Computed tomography scan and magnetic resonance imaging. *Circulation*, 108(15), e104-e106.
3. Sreekumari, A., Shriram, K. S., &Vaidya, V. (2016, August). Breast lesion detection and characterization with 3D features. In Engineering in Medicine and Biology Society (EMBC), 2016 IEEE 38th Annual International Conference of the (pp. 4101-4104). IEEE.
4. Sridhar, B., & Reddy, K. V. V. S. (2013, April). Qualitative detection of breast cancer by morphological curvelettransform. In Computer Science & Education (ICCSE), 2013 8th International Conference on (pp. 514-517). IEEE.
5. Giannini, V., Vignati, A., Morra, L., Persano, D., Brizzi, D., Carbonaro, L., ...&Regge, D. (2010, August). A fully automatic algorithm for segmentation of the breasts in DCE-MR images. In 2010 Annual International Conference of the IEEE Engineering in Medicine and Biology (pp. 3146-3149). IEEE.
6. S.Heywang-Kobrunner and R.Beck, Contrast-enhanced MRI of the breast, Springer-Verlag, 1995.
7. Zhen, L., & Chan, A. K. (2001). An artificial intelligent algorithm for tumor detection in screening mammogram. *IEEE transactions on medical imaging*, 20(7), 559-567.
8. Chikkerur, S., Cartwright, A. N., &Govindaraju, V. (2007). Fingerprint enhancement using STFT analysis. *Pattern Recognition*, 40(1), 198-211.
9. Zhiyuan, Q., Weiqiang, Z., Zhanmu, Z., Bing, W., Jie, R., &Baoshan, Z. (2005). A Robust Adaptive Image Smoothing Algorithm. *ALGORITHMS*, 1, 5.
10. Sumi, M. A. (2010). Empirical evaluation of suitable segmentation algorithms for IR images. In *International Journal of Computer Science Issues*.
11. Stanford JL, Herrinton LJ, Schwartz SM, Weiss NS. Breast cancer incidence in Asian migrants to the United States and their descendants. *Epidemiology* 1995;6:181-3
12. Anonymous, 2016i,<http://www.who.int/cancer/detection/en/>
13. Anonymous,2015m,http://www.cancerresearchuk.org/about-cancer/cancer_symptoms/why-is-early-diagnosis-important