

Detection of Tuberculosis Using Chest Cardiograph

Gayatri S Mahajan, Dr. S.R. Ganorkar

Department of Electronics & Telecommunication, Sinhgad College of Engineering, Pune, Savitribai Phule Pune
University, India

ABSTRACT: The MIL (multiple-instance learning) applied to a CAD (computer-aided detection) framework has a major advantage that it permits improving the latter with case-level labels instead of accurate lesion outlines as traditionally required for a regulated approach. Numerous computer aided diagnosis (CAD) issues can be best displayed as a multiple-instance learning (MIL) issue with unequal information: i.e., the preparation information normally consists of a few positive bags, and a quite large number of negative instances. In this paper, propose to decrease vulnerability by embedding a MIL classifier within an active learning (AL) structure. To limit the marking exertion, we build up a novel instance determination component that adventures the MIL issue definition through one-class arrangement. Adjust this system to give significant regions instead of individual instances for expert labeling, which a more proper system is given the application space. Also, and as opposed to normal AL strategies, a single iteration is performed. Existing MIL algorithms are much too computationally costly for these datasets. To demonstrate the effectiveness of our approach, this paper think about the yield of a CNN-based CAD framework trained with and without the proposed AL system. The task is to recognize textural irregularities identified with TB. Both quantitative and subjective assessments at the pixel level carried out.

KEYWORDS: Computer-aided detection (CAD), multiple instance learning, active learning, tuberculosis, chest radiography.

I. INTRODUCTION

CHEST section radiography is a generally utilized gadget in pneumonic tuberculosis (TB) detection. Consequently, a back premier chest radiograph (CXR) is acquired and inspected for variations from the norm, for example, opacities, combination, and so on. Which are suggestive of dynamic malady? As showed by a couple thinks about [10], mid-section radiography can yield high affectability and direct to high specificity. Regardless, to accomplish these execution levels, qualified workforce are required, which is an important drawback, since in various resource obliged countries, which in this manner are the most affected by TB, such personnel are not satisfactorily available [7]. A response for this issue has been recently exhibited by technique for PC supported location (CAD), as this innovation empowers the programmed evaluation of CXRs. As showed up in late reviews, CAD can perform comparably on the other hand superior to anything clinical officers, which are the kind of workforce consistently, passed on in the already specified resource obliged countries. Another great position of CAD is that it can possibly decrease other CXR-related issues, a few states of the chest; radiography is good for screening but poor for analysis. At the point when a condition is suspected in view of chest radiography, extra imaging of the chest can be acquired to absolutely analyses the condition or to give confirm for the conclusion recommended by starting chest radiography. Unless a fractured rib is associated with being uprooted, and along these lines liable to make harm the lungs and other tissue structures, x-ray of the chest is not necessary as it will not alter patient management.

II. LITERATURE SURVEY

The large study has been done over the detection of disease. Despite the advances in medicine and the improvement of non-costly and successful medications, tuberculosis (TB) is as yet one of the greatest killers around the world. It is evaluated that in 2012 [1], 8.6 million new TB cases happened, what's more, 1.3 million people died from this disease

International Journal of Innovative Research in Science, Engineering and Technology

(An ISO 3297: 2007 Certified Organization)

Website: www.ijirset.com

Vol. 6, Issue 5, May 2017

in this paper, a novel CAD approach for detecting tuberculosis on chest X-rays based on multiple-instance learning has been exhibited.

Active learning decreases the marking cost by iteratively choosing the most important information to query their labels[2]. It has attracted a lot of interests given the abundance of unlabelled information and the high cost of Most active learning approaches select either informative or representative unlabelled instances to query their labels, which could significantly limit their performance. Tuberculosis (TB) remains a worldwide medical issue, with nearly 9 million new cases and 1.4 million deaths reported in 2011[3]. The conclusion of this paper is that the CXR assessment utilizing CAD4TB and by clinical officers is similar. CAD4TB has potential as a point-of-care test and for the automated identification of subjects who require further examinations. Cancer tissues in histopathology pictures display strange designs; it is of incredible clinical significance to label a histopathology image as having cancerous regions or not also, play out the corresponding image segmentation[5] [6]. AN ECG is a realistic hint of the bioelectrical movement produced by the cardiovascular or heart muscle during a heartbeat. It gives cardiologists with useful data about the rhythm and functioning of the heart [7]. Moreover the two specialists, a radiologist and pulmonologist, autonomously explored 1031 randomly selected CXRs, mixed with films of confirmed TB cases. CXRs with difference on 'any anomaly' or 'irregularity predictable with TB' were jointly reviewed during a consensus panel. We compared the final expert and clinical officer classifications with bacteriologically affirmed TB as the best quality level. The result of this paper Satisfactory CXR screening can be accomplished with clinical officers. Reviewing a sample of CXRs by two specialists permit an evaluation of prevalence underestimation [8].

III. PROPOSED SYSTEM

The following Figure shows the complete block diagram for the detection of Tuberculosis by using chest radiograph. The system starts with the general image pre-processing techniques. Pre-processing is done over the input image to upgrade the picture quality without modifying the data content. After segmentation process, the component will be extracted to separate the element from the original image. The Framework will show the occurrence of disease by classifying lesion parameter from chest radiograph. This is how the system helps to identify the disease parameter. But the degree of the Tuberculosis cannot be detected from the system.

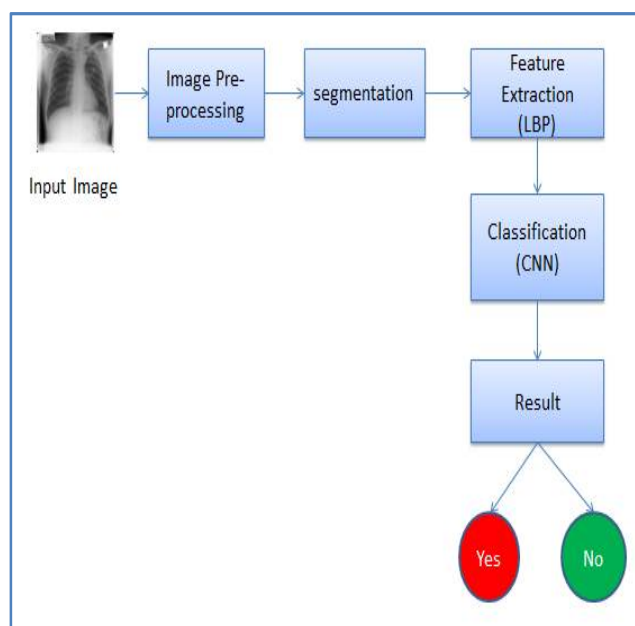


Fig 1: Block diagram of the proposed system

International Journal of Innovative Research in Science, Engineering and Technology

(An ISO 3297: 2007 Certified Organization)

Website: www.ijirset.com

Vol. 6, Issue 5, May 2017

The main stages in the proposed system are pre-handling, division by segmentation, highlight extraction utilizing Gabor filter and characterization utilizing Convolution neural network. The further section explains each of the progression in detail.

A. Image Pre-Processing:

The techniques of pre-processing are used to update the image quality without changing the information content that are hidden in the image. The necessity of the pre-processing is to improve the simulation percentage, to reduce distortion, to get higher assurance etc. The basic steps in pre-processing are gray image conversion, binary image, gray mapping and segmentation.

Segmentation

To separate out the lesion boundary, the process segmentation is needed. It creates an outline over the interested area and divides original image into two parts. The process is moreover called as pixel based picture division methodology as it deals with the assurance of starting seed centers. Along the lesion outlines, the division examines neighboring pixels of the lesion and takes care if the pixel neighbors gets added to the region.

B. Feature Extraction

The process is required to concentrate the highlights. The highlights that are to be extracted are texture of human lungs, intensity of the disease, volume of the lungs, area between the two lungs etc. This parameter put toward the description of segments or picture qualities, which will help to address the information that is needed for examination and detection of disease. The technique used here for feature extraction is nothing but local binary pattern extraction.

LBP(Local Binary Patterns):

The local binary pattern is nothing but an image operator which transforms an image into an array of an image or image of an integer labels that describes small scale appearance of an image. These labels or moreover their statistics, most probably the histogram are then used for further image analysis. The original version of the LBP operator works in a 3 * 3 pixel block of an image. The center pixel is used for thresholding all other pixels in the block of 3 * 3 pixel and then it is multiplied by the power of 2 and then summed altogether to obtain a label for the center pixel. The operator is defined for a monochrome image $I(x,y)$ as

$$LBP_{P,R}(x_c,y_c) = \sum_{p=0}^{P-1} S(g_p - g_c) 2^p \quad (1)$$

In the above equation g_p denote the gray value of a sampling point in an evenly spaced circular neighborhood of P sampling points and g_c denote the gray level of an arbitrary pixel (x,y) , i.e. $g_c = I(x,y)$. In the above equation, s is the thresholding step function which is given as below

$$s(z) = \begin{cases} 1, & z \geq 0 \\ 0, & z < 0. \end{cases} \quad (2)$$

To obtain the LBP pattern the neighborhood is indexed circularly so that it gets easier to derive rotation invariant texture descriptors. Also the diagonal pixels in the 3 * 3 neighborhood are interpolated in LBP.

C. Convolutional Neural Network

In the approach of machine learning, a Convolutional Neural Network plays the role of feed forward artificial neural network. CNN is well known as shift invariant or space invariant artificial neural network (SIANN). The name SIANN is based on its shared weights architecture and translation invariance characteristics. The CNN are biologically inspired variants of multilayer perceptrons which is designed to emulate the behaviour of a visual cortex. The challenges faced by the MLP architecture are then mitigated by CNN models by exploiting the strong spatially local correlation which is present in natural images. CNN have the distinguishing features such as 3D volume of neurons, local connectivity, shared weights etc. The architecture of CNN is obtained by a stack of distinct layers which transforms the input volume into an output volume through a differentiable function. The concept of CNN is further explained in following steps:

- a) Initialization: The Xavier initialization is used to achieve the convergence. We require to maintain the activations and the gradients in controlled levels, if not the back propagated gradients could explode.

International Journal of Innovative Research in Science, Engineering and Technology

(An ISO 3297: 2007 Certified Organization)

Website: www.ijirset.com

Vol. 6, Issue 5, May 2017

b) Activation function: For the nonlinear transformation of the data, activation function is required. The rectified linear units (ReLU) is applied for the non-saturating activation function which is defined as

$$F(x) = \max(0, x) \quad (3)$$

Other activation function such as classical sigmoid, hyperbolic tangent functions also used but gives less results than ReLU. ReLU results in the neural network training so many times faster without generating a significant difference to generalisation accuracy.

c) Pooling: The non linear down sampling is achieved by pooling. The *max pooling* is used which partitions the input image into a set of non-overlapping rectangles and, for each such sub-region, and gives the maximum output.

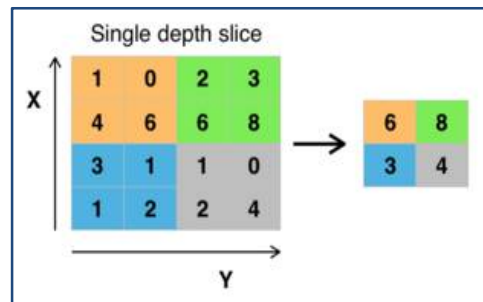


Fig 2. Max pooling with a 2x2 filter and stride = 2

Another variant of max pooling is Region of Interest pooling (RoI pooling) in which output size is fixed and input rectangle is a parameter. This component of CNN is important in object detection based on fast R-CNN architecture.

- d) Regularization: The overfitting is reduced by using regularization. The *dropout* in FC layers is used. In each training step of CNN, the nodes from the network are removed with probability p . An ensemble of different networks can be seen by dropout and a form of bagging, since each of the network is trained with a portion of the training data. Other methods also used for regularization such as Drop connect, stochastic pooling, artificial data, early stopping etc.,
- e) Data Augmentation: The size of training sets can be increased and overfitting can be reduced by data augmentation. Since the class of the patch is obtained by the central voxel, we restricted the data augmentation to rotating operations. In our proposal, we used angles multiple of 90° , although another alternative will be evaluated.
- f) Loss function: The function is minimized during training. The Categorical cross entropy is used as,

$$H = -\sum_{j \in \text{voxels}} \sum_{k \in \text{classes}} C_{j,k} \log(C_{j,k}) \quad (4)$$

Where C represents the probabilistic predications and C is the target.

IV. EXPERIMENTAL SETUP

The function MATLAB has been used to calculate the values of various parameters of the images. By using these values, we can differentiate whether a given X-ray image is normal or disease containing image. Hundred different images are used for training and testing set. Out of these thirty images are normal images and rest are images bearing tuberculosis. The parameters of the hundred images are then arranged into a matrix form and fed to convolutional neural network. The complexity can be reduced by designing a CNN and by tuning the intensity normalization transformation for each tuberculosis image.

Total images (N) = 100

Abnormal images = 70

Normal images = 30

International Journal of Innovative Research in Science, Engineering and Technology

(An ISO 3297: 2007 Certified Organization)

Website: www.ijirset.com

Vol. 6, Issue 5, May 2017

The accuracy of the system can be calculated by performance parameter. The following table shows the various performance parameters.

Table 1 : performance parameter

Performance Parameter	No of images
True Positive(TP)	66
True Negative(TN)	4
False Positive(FP)	5
False Negative(FN)	25

From the above table, the accuracy of the system can be calculated as

$$\% \text{ Accuracy} = (TP + FN) / \text{Total no of images}$$

$$= (66+25)/100$$

$$= 91\%$$

$$\% \text{ Misclassification Rate} = 4/70 = 5.7\%$$

$$\% \text{ Precision} = 66/(66+5) = 92\%$$

Table 2: Parameter analysis

Parameters	Existing System	Proposed System
Accuracy	85%	91%
Misclassification rate	22%	5.7%
Precision	72%	92%
Labelling Rate	55sec	45sec

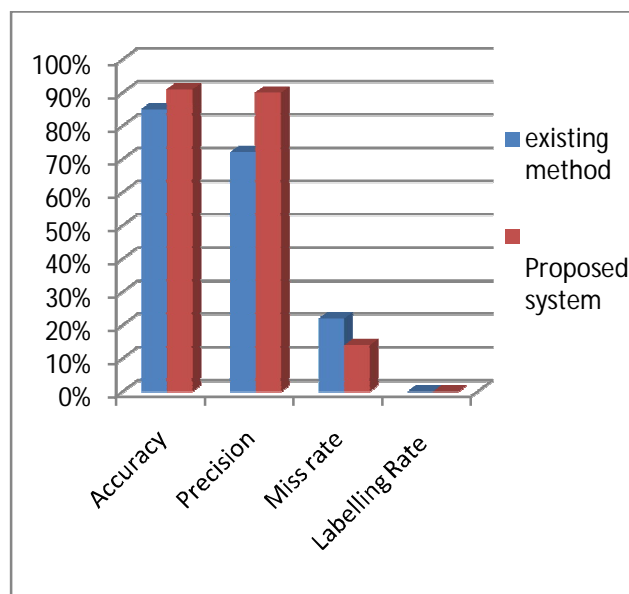


Fig 3: Parameter Analysis

International Journal of Innovative Research in Science, Engineering and Technology

(An ISO 3297: 2007 Certified Organization)

Website: www.ijirset.com

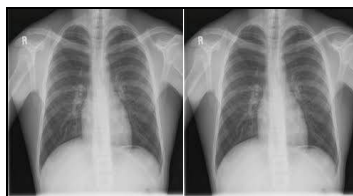
Vol. 6, Issue 5, May 2017

V.CONTRIBUTION

The existing system uses the multiple instances learning with combination of active learning. The contribution to the work is using convolutional neural network as a classification method along with the local binary pattern for feature extraction to detect the tuberculosis.

VI. RESULTS

[1] Image resizing: Once the header is removed from original image, the size of image gets varied. The process of resizing of images is done using MATLAB. The following Fig shows the normal x-ray image of chest, image 4(a) and image 4(b) represents original chest X-ray image and resized image. Similarly Figure 5 represents image affected with disease. The images are read in MATLAB using function 'imread' and they are resized using function 'imresize'. Both the functions are inbuilt MATLAB function.



a.Original Image b. Resized normal image

Fig 4: Normal chest X-ray image



a.Original affected b. Resized image

Fig 5. Chest X-ray with Tuberculosis

[2] Image Enhancement using Gabor filtering:

Figure 6(a) represents the resized input image which is affected with TB and Figure 6(b) shows the output image after enhancement.



a.Resized affected input image b. Enhanced output image

Fig 6.Chest X-ray image after enhancement

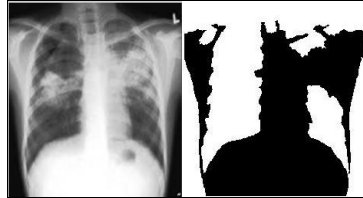
[3] Image segmentation using binary mapping Figure 7(a) represents the enhanced affected image as input to the segmentation process whereas figure 7(b) shows the output image after segmentation.

International Journal of Innovative Research in Science, Engineering and Technology

(An ISO 3297: 2007 Certified Organization)

Website: www.ijirset.com

Vol. 6, Issue 5, May 2017



a. Enhanced input image b. Segmented binary
Fig 7. Binary mapping image after segmentation

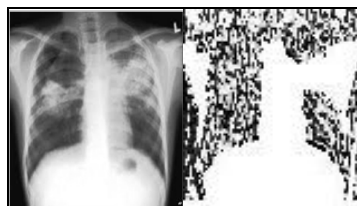
After segmentation the gray mapping is done for the better result. The feature extraction gets easier on gray images. So figure 8(a) and 8(b) below shows the input image and gray mapping respectively.



a. Affected input image b. Gray mapping image
Fig 8. Gray Mapped image of an input chest X-ray

[4] Feature Extraction using Local Binary Pattern:

The feature will be extracted from gray mapped image by using local binary pattern. The following figure 9(a) and 9(b) shows input image and LBP image respectively. In LBP image we can identify the occurrence of disease.



a. Affected input image b. LBP image
Fig.9 Texture feature extracted by LBP image

VII. CONCLUSION

In this paper we propose a novel-CNN based method for detection of tuberculosis in chest radiographs. We start by basic image processing steps, then parameter extraction basically the texture extraction, picture division by LBP and then classification. The Convolutional neural network can be effectively executed and checks whether the radiograph is affected with TB or not. By using CNN we can get high accuracy rate.

REFERENCES

- [1] J. Melendez, B. van Ginneken, P. Maduskar, R. H. H. M. Philipsen, K. Reither, M. Breuninger, I. M. O. Adetifa, R. Maane, H. Ayles and C. I. Sanchez, "A novel multiple-instance learning-based approach to computer-aided detection of tuberculosis on chest X-rays," *IEEE T. Med. Imaging*, vol. 34, pp. 179–192, 2015.
- [2] S.-J. Huang, R. Jin and Z.-H. Zhou, "Active learning by querying informative and representative examples," *IEEE T. Pattern Anal.*, vol. 36, pp. 1936–1949, 2014.
- [3] P. Maduskar, M. Muyoyeta, H. Ayles, L. Hogeweg, L. Peters-Bax and B. van Ginneken, "Detection of tuberculosis with digital chest radiography: automatic reading versus interpretation by clinical officers," *Int. J. Tuberc. Lung Dis.*, vol. 17, pp. 1613–1620, 2013.

International Journal of Innovative Research in Science, Engineering and Technology

(An ISO 3297: 2007 Certified Organization)

Website: www.ijirset.com

Vol. 6, Issue 5, May 2017

- [4] L. Sun, Y. Lu, K. Yang and S. Li, "ECG analysis using multiple instance learning for myocardial infarction detection," *IEEE T. Bio-Med. Eng.*, vol. 59, pp. 3348–3356, 2012.
- [5] A. H. van'tHoog, H. K. Meme, H. van Deutekom, A. M. Mithika, C. Olunga and M. W. Borgdorff, "High sensitivity of chest radiograph reading by clinical officers in a tuberculosis prevalence survey," *Int. J. Tuberc. Lung Dis.*, vol. 15, pp. 1308–1314, 2011.
- [6] S. Dasgupta and D. Hsu, "Hierarchical sampling for active learning," in *Proc. ICML*, pp. 208–215, 2008.
- [7] J. Meessen, X. Desurmont, J.-F. Delaigle, C. De Vleeschouwer and B. Macq, "Progressive learning for interactive surveillance scenes retrieval," in *Proc. IEEE CVPR*, pp. 1–8, 2007.
- [8] A. H. van'tHoog, M. W. Langendam, E. Mitchell, F. G. Cobelens, D. Sinclair, M. M. G. Leeflang and K. Lonroth, "A systematic review of the sensitivity and specificity of symptom- and chest-radiography screening for active pulmonary tuberculosis in HIV-negative persons and persons with unknown HIV status," *World Health Organization*, 2013.
- [9] Thomas G. Dietterich a,*, Richard H. Lathrop b, Tom & Lozano-P6rez c,d "Solving the multiple instance problem with axis-parallel rectangles" Department of Computer Science, Oregon State University, Dearborn Hall 303, Corvallis, OR 97331-3202, USA
- [10] Simon Tong, Daphne Koller "Support Vector Machine Active Learning with Applications to Text Classification" Computer Science Department Stanford University Stanford CA 94305-9010, *Journal of Machine Learning Research* (2001) 45-66
- [11] J. M. Lesniak, R. Hupse, R. Blanc, N. Karssemeijer and G. Székely, "Comparative evaluation of support vector machine classification for computer aided detection of breast masses in mammography," *Phys. Med. Biol.*, vol. 57, pp. 5295–5307, 2012.
- [12] J. Lesniak, R. Hupse, M. Kallenberg, M. Samulski, R. Blanc, N. Karssemeijer, G. Székely, "Computer aided detection of breast masses in mammography using support vector machine classification," *Proc. SPIE: Medical Imaging*, vol. 7963, pp. 79631K, 2011.
- [13] D. Zhang, F. Wang, Z. Shi and C. Zhang, "Interactive localized content based image retrieval with multiple-instance active learning," *Pattern Recogn.*, vol. 43, pp. 478–484, 2010.
- [14] L. Hogeweg, C. Mol, P. A. de Jong, R. Dawson, H. Ayles and B. van Ginneken, "Fusion of local and global detection systems to detect tuberculosis in chest radiographs," in *Proc. MICCAI, LNCS*, vol. 6363, pp. 650–657, 2010.
- [15] B. van Ginneken, M. B. Stegmann and M. Loog, "Segmentation of anatomical structures in chest radiographs using supervised methods: a comparative study on a public database," *Med. Image Anal.*, vol. 10, pp. 19–40, 2006.