

International Journal of Innovative Research in Science, Engineering and Technology

(A High Impact Factor, Monthly, Peer Reviewed Journal)

Visit: www.ijirset.com

Vol. 7, Issue 5, May 2018

Multiple Sources for Online Transfer Learning Information

Ashish P.Gaigol, Prof.H.U.Joshi

Department Of Computer Engineering, JSPM's Imperial College of Engineering And Research, Wagholi, Pune, India

ABSTRACT: Exchange learning methods have been comprehensively connected on applications where named information in an objective space are hard to get while a considerable measure of named information are accessible in related source areas. There can be numerous source spaces that are identified with the objective area, and how to join them is as yet an open issue. In this paper, I try to use named information from different source spaces to improve order execution in an objective area where the objective information are gotten in an online manner. This issue is known as the online exchange learning issue. To accomplish this, the proposed novel called online move learning standards in which the source and target areas are utilized adaptively. So think about two diverse issue settings: homogeneous exchange learning, and heterogeneous exchange learning. The proposed strategies work in an online way, where the weights of the source areas are balanced powerfully. What's more, give the misstep limits of the proposed strategies and perform extensive tests on certifiable informational indexes to show the adequacy of the proposed algorithms.

KEYWORDS: Online transfer learning, multiple source domains, heterogeneous transfer.

I. INTRODUCTION

Online exchange learning is an essential research subject in information mining and machine learning and has been broadly contemplated for a long time. It for the most part means to address the machine learning errands of building models in another objective space by exploiting data from another current source area through information exchange. Exchange learning is essential for some applications where preparing information in another space might be constrained or excessively costly, making it impossible to gather. For the heterogeneous setting, the source area information and target space information are in various component spaces. A normal case is appeared in accepting the component space of the objective area information is part into two areas, the source area and the objective space share homogeneous highlights in the main segment while the other segment contains heterogeneous highlights. That is, the component space of the source area is a subset of the element space of the objective area. Such settings hold for an assortment of genuine applications. A case of heterogeneous multi-source exchange learning errand is picture arrangement in PC vision region where the obtaining of the marked pictures of target area is costly. Be that as it may, it is conceivable to gather marked pictures containing a subset of highlights of the objective picture from a few source spaces as the heterogeneous source information.

a) Background

For the heterogeneous setting, the source area information and target space information are in various component spaces. A run of the mill illustration is appeared in assuming the element space of the objective area information is part into two segments, the source space and the objective area share homogeneous highlights in the principal segment while the other segment contains heterogeneous highlights. That is, the component space of the source area is a subset of the element space of the objective space. Such settings hold for an assortment of true applications.

International Journal of Innovative Research in Science, Engineering and Technology

(A High Impact Factor, Monthly, Peer Reviewed Journal)

Visit: www.ijirset.com

Vol. 7, Issue 5, May 2018

b) Motivation

The online transfer learning contains a collection of source domain and target that classified the information about website but the information of learning subtopic are not clearly explained therefore in this paper, propose this technique effectively.

c) Objective and Scope

The objective of exchange learning is to make utilization of marked information from one or numerous source areas to upgrade the learning execution on an objective space in which named information for preparing are hard to gather.

d) Goal

The goal is that these methods could be applicable to measure the performance of the target task, to leverage knowledge fetched from offline source space.

II. REVIEW OF LITERATURE

E.W. Xiang, S. J. Pan, W. Pan, J. Su, and Q. Yang [1]. Exchange learning addresses the issues that labeled preparing information are lacking to create elite model. Commonly, given a target learning errand, most exchange learning approach requires to choose at least one helper errands as sources by the originators. Be that as it may, how to choose the correct source information to empower viable learning exchange consequently is as yet an unsolved issue, which restrains the materialness of exchange learning. In this paper, we make one stride ahead and we represent a novel exchange learning system, known as source-determination free exchange learning (SSFTL), to free clients from the need to choose source areas. Rather than approaching the clients for source and target information sets, as conventional exchange learning does, SSFTL swings to some online data sources such as World Wide Web or the Wikipedia for offer assistance.

H. Xia, S. C. Hoi, R. Jin, and P. Zhao [2]. Late years have seen various examinations on separate metric figuring out how to enhance visual comparability look in Content-Based Image Retrieval (CBIR). Regardless of their triumphs, most existing strategies on separate metric learning are constrained in two angles. To start with, they more often than not accept the objective vicinity work takes after the group of Mahalanobis separations, which constrains their ability of measuring closeness of complex examples in genuine applications.

J. Wang, S. C. Hoi, P. Zhao, and Z.-Y. Liu [3]. This paper concentrates on investigating customized multi-undertaking learning approaches for community oriented sifting towards the objective of enhancing the forecast execution of rating expectation frameworks. These techniques first particularly distinguish an arrangement of clients that are firmly identified with the client under thought (i.e., dynamic client), and afterward take in various rating expectation models all the while, one for the dynamic client and one for each of the related clients.

S. Shalev-Shwartz and Y. Singer [4]. Web based learning is the way toward noting a grouping of inquiries given information of the right answers to past inquiries and perhaps extra accessible data. Noting questions in a canny manner and having the capacity to settle on sound choices accordingly is an essential component of regular day to day existence. Will it rain today (so would it be a good idea for me to take an umbrella)? Should I battle the wild creature that is after me, or would it be advisable for me to flee? Would it be a good idea for me to open a connection in an email message or is it an infection? The investigation of internet learning calculations is along these lines an imperative area in machine learning, and one that has fascinating hypothetical properties and down to earth applications

W. Pan and Q. Yang [5]. We exhibit a novel structure of Transfer by Collective Factorization (TCF), in which we build a common inert space by and large and take in the information subordinate impact independently. A noteworthy preferred standpoint of the TCF approach over the past bilinear strategy for aggregate grid factorization is that we can catch the data dependent impact when sharing the information free learning.

International Journal of Innovative Research in Science, Engineering and Technology

(A High Impact Factor, Monthly, Peer Reviewed Journal)

Visit: www.ijirset.com

Vol. 7, Issue 5, May 2018

K. Crammer, O. Dekel, J. Keshet, S. Shalev-Shwartz, and Y. Singer [6]. We display a group of edge based web based learning calculations for different expectation assignments. Inspecific we determine and dissect calculations for double and multiclass order, relapse, uniclass expectation and succession forecast. The refresh ventures of our distinctive calculations are all in view of explanatory answers for basic compelled enhancement issues.

P. Zhao, S. C. Hoi, and R. Jin [7]. In this paper, we propose a new online learning method, termed Double Updating Online Learning, or DUOL for short that explicitly addresses this problem. Instead of only assigning a fixed weight to the misclassified example received at the current trial, the proposed online learning algorithm also tries to update the weight for one of the existing support vectors. We show that the mistake bound can be improved by the proposed online learning method.

M. Dredze, K. Crammer, and F. Pereira [8]. We present certainty weighted direct classifiers, which add parameter certainty data to straight classifiers. Online learners in this setting refresh both classifier parameters and the gauge of their certainty. The specific online calculations we ponder here keep up a Gaussian circulation over parameter vectors and refresh the mean and covariance of the appropriation with each case.

Z. Wang, Y. Jiang, F. L. Chung, and H. Ishibuchi [9]. The conventional model based bunching strategies, for example, the outstanding fluffy *c*-mean (FCM) calculation; for the most part require adequate information to locate a decent bunching parcel. On the off chance that the accessible information is constrained or rare, a large portion of the current model based grouping calculations will at no time in the future be compelling. While the information for the present bunching assignment might be rare, there is typically some helpful learning accessible in the related scenes/spaces.

M. Tan, L. Wang, and I. W. Tsang [10]. An inadequate portrayal of Support Vector Machines (SVMs) as for input highlights is attractive for some applications. In this paper, by presenting a 0-1 control variable to each info include, 10-standard Sparse SVM (SSVM) is changed over to a blended whole number programming (MIP) issue. Instead of straightforwardly illuminating this MIP, we propose a productive cutting plane calculation joining with numerous portions figuring out how to tackle its raised unwinding.

III. PROPOSED SYSTEM

A web based learning calculation consecutively refreshes a classifier in view of the inputs of an information grouping by handling each occasion upon its entry. The classifier right off the bat gets an occurrence at each round, makes an expectation and gets the ground-truth mark. At that point the classifiers refreshed in light of the misfortune data as indicated by the anticipated outcome and the genuine name. To improve the execution of the objective undertaking, use the learning extricated from disconnected source information. Rather than concentrating exclusively on a solitary source space, examine online exchange learning with various source areas. So think about two distinct circumstances: (I) homogeneous exchange realizing where the source and target information are in a similar component space; (ii) heterogeneous exchange realizing where the source and target information are spoken to in various element spaces and propose a novel online exchange learning calculations with different source areas for both homogeneous and heterogeneous exchange learning. And validate the effectiveness of the proposed methods by conducting extensive experiments on real-world data sets. An internet learning calculation successively refreshes a classifier in light of the criticisms of an information arrangement by handling each occurrence upon its landing. The classifier right off the bat gets a case at each round, makes a forecast and gets the ground-truth mark.

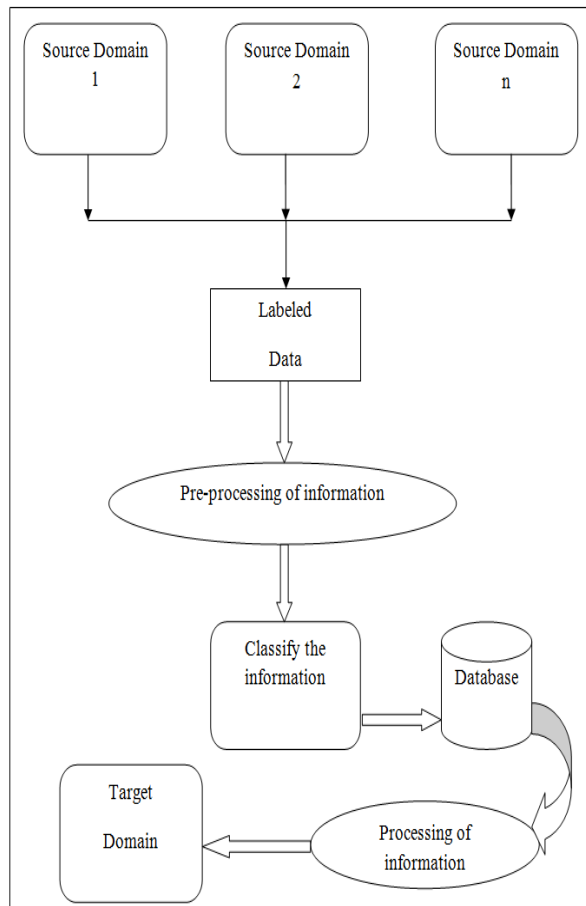
International Journal of Innovative Research in Science, Engineering and Technology

(A High Impact Factor, Monthly, Peer Reviewed Journal)

Visit: www.ijirset.com

Vol. 7, Issue 5, May 2018

IV. SYSTEM ARCHITECTURE



Explanation

First fetch the information from the many source domain and it transfer from source domain to target domain because it useful for the any user. All labeled data come from source domains and then preprocessing on this information. And classify the information and store into database. After that processing on this information and display on target domain.

V. ALGORITHM

Algorithm for HomOTLMS:

Use algorithm called HomOTLMS, means Homogeneous Online Transfer Learning with Multiple Source area, where all the areas share the same feature space, i.e., $X_{Si} = X; \delta_i$.

Activated by the Hedge method, manage multiple decision functions that are constructed on the source areas, respectively, to build an ensemble classifier for the target instances. Since the source information are given ahead of time, the choice capacities f_{S1} to f_{Sn} from the source domains can be built in an offline batch learning paradigm.

For the target data that arrive in an online fashion, the target decision function f_T is learned by the PA online learning algorithm which constructs a set of support vectors that come from the target instances.

So final equation is,

International Journal of Innovative Research in Science, Engineering and Technology

(A High Impact Factor, Monthly, Peer Reviewed Journal)

Visit: www.ijirset.com

Vol. 7, Issue 5, May 2018

$$f_t(x) = \text{sign}\left(\sum_{i=1}^n p_t^i f_t^{S_i}(x) + p_t^v f_t^T(x)\right)$$

Algorithm for HetOTLMS:

Used another algorithm, each new-coming instance of target area is divided into two instances.

The first offers a similar element space with the occurrence of the source area while the other is considered to prepare another student on the objective area.

The comparable technique is embraced to alter weights of source area and target space. At long last, the last classifier is additionally connected with weighted source students and target students.

So final equation is,

$$f_t(x) = \text{sign}\left(\sum_{i=1}^n p_t^i f_t^i(x)\right)$$

VI. MATHEMATICAL MODULE

According to the Represented Theorem and the traits of online learning, the target classifier can be represented by:

$$f^t(x) = \sum_{i=1}^t a_i y_i k(x_i, x)$$

Where a_i is the coefficient of the i -th target instance.

The combined decision function for the target task can be written as

$$d^t(x, w) = \sum_{i=1}^t a_i y_i k(x_i, x) + \sum_{j=1}^n w_j f^{S_j}(x)$$

Where w_j is weight value for the j -th source domain classifier.

Here assume that the feature space of each source domain is a subset of that of the target domain, i.e., $R^{d_i} \subseteq R^d$, where R^{d_i} is the feature space of the i -th source domain, and R^d is the feature space of the target domain.

VII. EXPERIMENTAL SETUP AND RESULT TABLE

1. Software requirement specification

The software requirements specification provides an overview of all software as well as hardware used in this project. For this project, windows 7,8,10 operating system can be used. The language used for implementation is java which required the JDK (Java SE Development kit) JDK have many version such as the 1.2, 1.3 and up to 1.8. Platform which used for JDK is eclipse, eclipse have many version also. To

run the code in eclipse, there is need to have the server and the name is Apache tomcat 7. Database used is MYSQL.

A system which should have Dual core processor and minimum 40 GB hard-disk is essential to perform required operation. Standard monitor and 1 GB RAM is needed. In addition to this, internet connection is required as this system will perform online feeding of the data as per need.

International Journal of Innovative Research in Science, Engineering and Technology

(A High Impact Factor, Monthly, Peer Reviewed Journal)

Visit: www.ijirset.com

Vol. 7, Issue 5, May 2018

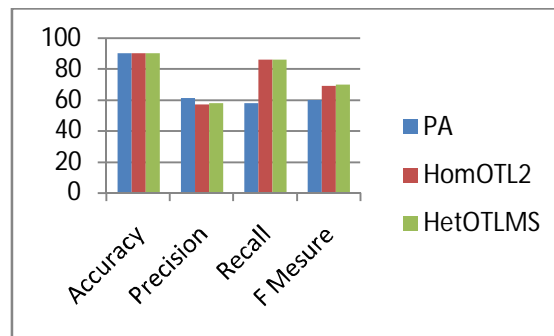
2. Result Table

Let us consider the table 1 for the response time of both algorithms is baseline algorithm and partition algorithm.

Algorithm	Acc-uracy	Prec-ision	Recall	FMeasure
PA	90	61	58	60
HomOTL2	90	57	86	69
HetOTLMS	90	58	86	70

3. Result Graph

Figure 2 demonstrates the response time incurred in this phase for algorithm.



Explanations:

For additional top to bottom comprehension of the execution of the calculation, contrast the proposed calculation and baselines on an extensive scale informational index, five dialect informational collection. Table demonstrates the execution of the calculations as far as exactness, exactness, review, F-measure and MCC (Matthews Correlation Coefficient). To help comprehend the exhibitions, moreover demonstrate the certainty interim for each measure. For example, in the event that the precision of a benchmark is not as much as the lower furthest reaches of the certainty interim, at that point calculation is superior to the pattern; if the precision of a benchmark falls into the certainty interim, at that point execution of this pattern is tantamount to calculation; For different cases, calculation is less powerful than the pattern. From Table, one can watch that HomOTLMS is more powerful than the baselines on a large portion of the undertakings under the five measures when all is said in done. This is on the grounds that the baselines utilize every one of the sources aimlessly in the preparation procedure of the grouping model. What's more, this practice overlooks the connection between each source space and target area.

VIII. CONCLUSION

In this project, propose an online exchange learning worldview with various source spaces. A homogenous online exchange learning calculation and a heterogeneous online exchange learning calculation are both outlined. Contrasted with the conventional online exchange learning calculations which were intended for learning room a solitary source area, our techniques can exchange information from multi-source areas, even the source areas that have heterogeneous element space with the objective space. In light of the hypothetical examination, one can have a clearer comprehension of the parameters of the calculation on the error. Exploratory outcomes on three true informational collections show that the proposed calculations can accomplish better exhibitions against the thought about baselines, and the time cost increments are satisfactory. A few issues stay to be examined in the future work. Right off the bat, just propose calculations to handle paired order errands. Along these lines, a multi-class characterization issue is one approach to expand given proposed calculations. Besides, in heterogeneous settings, includes in the source area constitute a subset of those of the objective space. This may constrain the application situation for calculation. Henceforth, extending

International Journal of Innovative Research in Science, Engineering and Technology

(A High Impact Factor, Monthly, Peer Reviewed Journal)

Visit: www.ijirset.com

Vol. 7, Issue 5, May 2018

calculation settings to a more broad circumstance is of another future work. Finally, because of the substantial size of the objective area on an extensive scale informational index, the enhancements end up noticeably minimal. Later on, will utilize a few procedures w.r.t. transitive exchange adapting, for example, source space choice or cases choice, to accomplish more changes.

ACKNOWLEDGMENT

With an immense pleasure and satisfaction, presenting this paper. I would like to express my sincere gratitude towards all those who have shown their support.

REFERENCES

- [1] H. Xia, S. C. Hoi, R. Jin, and P. Zhao, "Online multiple kernel similarity learning for visual search," *Pattern Analysis and Machine Intelligence, IEEE Transactions on*, vol. 36, no. 3, pp. 536–549, 2014.
- [2] Z. Wang, Y. Jiang, F. L. Chung, and H. Ishibuchi, "Transfer proto-type based fuzzy clustering," *IEEE Transactions on Fuzzy Systems*, vol. 24, no. 5, 2014.
- [3] J. Wang, S. C. Hoi, P. Zhao, and Z.-Y. Liu, "Online multi-task collaborative filtering for on-the-fly recommender systems," in *Proceedings of the 7th ACM Conference on Recommender Systems*. ACM, 2013, pp. 237–244.
- [4] W. Pan and Q. Yang, "Transfer learning in heterogeneous collaborative filtering domains," *Artificial intelligence*, vol. 197, pp. 39–55, 2013.
- [5] E. W. Xiang, S. J. Pan, W. Pan, J. Su, and Q. Yang, "Source-selection-free transfer learning," in *IJCAI Proceedings-International Joint Conference on Artificial Intelligence*, vol. 22, no. 3, 2011, p. 2355.
- [6] P. Zhao, S. C. Hoi, and R. Jin, "Double updating online learning," *Journal of Machine Learning Research*, vol. 12, no. May, pp. 1587–1615, 2011.
- [7] M. Tan, L. Wang, and I. W. Tsang, "Learning sparse svm for feature selection on very high dimensional datasets," in *Proceedings of the 27th International Conference on Machine Learning (ICML-10)*, 2010, pp. 1047–1054.
- [8] M. Dredze, K. Crammer, and F. Pereira, "Confidence-weighted linear classification," in *Proceedings of the 25th international conference on Machine learning*. ACM, 2008, pp. 264–271.
- [9] S. Shalev-Shwartz and Y. Singer, "Online learning: Theory, algorithms, and applications," 2007.
- [10] K. Crammer, O. Dekel, J. Keshet, S. Shalev-Shwartz, and Y. Singer, "Online passive-aggressive algorithms," *The Journal of Machine Learning Research*, vol. 7, pp. 551–585, 2006.