



e-ISSN: 2319-8753 | p-ISSN: 2347-6710

# IJIRSET

International Journal of Innovative Research in  
**SCIENCE | ENGINEERING | TECHNOLOGY**

# INTERNATIONAL JOURNAL OF INNOVATIVE RESEARCH

IN SCIENCE | ENGINEERING | TECHNOLOGY

Volume 10, Issue 8, August 2021

**ISSN** INTERNATIONAL  
STANDARD  
SERIAL  
NUMBER  
INDIA

**Impact Factor: 7.569**

9940 572 462

6381 907 438

[ijirset@gmail.com](mailto:ijirset@gmail.com)

[www.ijirset.com](http://www.ijirset.com)

# Effect on Concrete by Partial Replacement of Cement by Silica Fume

Baibhav<sup>1</sup>, Darshan Vyas<sup>2</sup>, Deshraj Verma<sup>3</sup>, Hemant Kumar Sain<sup>4</sup>

B.Tech. Scholar, Department of Civil Engineering, Arya College of Engineering and Research Centre, Jaipur, India<sup>1-3</sup>

Assistant Professor, Department of Civil Engineering, Arya College of Engineering and Research Centre, Jaipur, India<sup>4</sup>

**ABSTRACT:** This examination audit is a thesis of comes about because of existing investigations on the compressive strength, flexural strength, and rigidity testing of cement consolidating silica fume through ideal substitution of cement. Portland cement is currently somewhat supplanted by silica fume, a result of silicon compound assembling measure in production lines. As concurring different examinations, silica fume (SF) is a non-metallic, non-risky material with an enormous surface region that is appropriate for substantial blending measures. This audit paper is an incredible asset for finding out about the impact of silica fume on the upgraded substitution of concrete. The utilization of Silica Fume (SF) in a brief period 1 time significantly affected the business capacity to regularly and monetarily produce SF-altered cement of flowable in nature however yet stay firm, which thus would foster both high early and high later-age qualities including impervious to forceful conditions. This paper includes an exploratory examination of the idea of SF and its effects on the properties of new and solidified cement. In the current examination, an endeavor has been made to explore the strength boundaries of cement made with halfway substitution of concrete by SF. Very little or no work has been done utilizing silica seethe as a substitution of concrete. Besides, no such endeavor has been made in subbing silica seethe with concrete for low/mid-range grade concrete (viz. M20, M25). Properties of solidified cement viz. Ultimate Compressive strength, Flexural strength, Splitting Tensile strength not set in stone for various blend mixes of materials and these qualities are contrasted and the comparing upsides of customary cement. The current examination has been pointed toward bringing mindfulness among the rehearsing structural specialists in regards to the benefits of these new concrete blends.

**KEYWORDS:** Compressive strength, ideal substitution, flexural strength, typical cement, silica rage i.e., silica fume (SF) concrete, split tensile strength.

## I. INTRODUCTION

Cement is turning into a scant asset all around the world on account of its expanding requests step by step. The development exercises have expanded in practically every one of the non-industrial nations of the world. During the most recent thirty years, extraordinary steps have been taken in working on the quality and guidelines of the properties of concrete as development material. Generally fly debris and silica rage or the mix of both is added to the concrete as a pozzolana material to upgrade the properties of cement. The utilization of silica fume as a pozzolana has expanded overall consideration over the new years since when blended in specific extents it improves the properties of both new and hard substantial like sturdiness, strength, penetrability and compressive strength, flexural strength, and rigidity.

Silica fume is a result of the creation of silicon amalgams, for example, ferro-chromium, ferro-manganese, calcium silicon, and so forth which likewise makes ecological contamination and wellbeing peril and health hazard.

### 1.1 Physical and chemical properties of silica fume: -

1. The actual properties of silica rage are as per the following-
  - ❖ Diameter of silica fume is 0.1 micron to 0.2 micron.
  - ❖ The surface region is in the range of 20,000-30,000 m<sup>2</sup>/kg.
  - ❖ Density fluctuates from 150 to 700 kg/m<sup>3</sup>.



2. The compound properties of silica fume are as per the following: -
  - ❖ Silica fume contains over 90% of silicon dioxide (SiO<sub>2</sub>).
  - ❖ Other constituents are carbon, sulfur, and oxides of aluminum, iron, calcium, magnesium, sodium, and potassium.
  - ❖ The utilization of silica fume in substantial blend has designing potential and monetary benefit. The utilization of silica smoke won't impact the heaviness of cement. Silica smoke will create a considerably less penetrable and high strength concrete.

## II. LITERATURE REVIEW

1. The investigation completed by Ray [1], it is tracked down that compressive strength expanded by about 21%, flexural strength by 35%, and split rigidity by 10% when silica fume was added (5%-12.5%).
2. Joshi [2], saw that decrease in concrete substance at fixed water concrete proportion was not hindering to new and solidified substantial properties and may really further develop execution when silica fume was added as 10% by weight of the concrete substance.
3. During the viaduct development between J.J clinic and Crawford market in Mumbai, Saini [3] has gone through an examination work dependent on superior cement (HPC) of grade M75 where SF was added @10% by weight of concrete to guarantee the solidness of the construction. They found 28days compressive strength of HPC fluctuated between 79.6 to 81.3 MPa, which shows great control of the nature of cement.
4. During the broad examination work completed by Vishnoi [4], it was presumed that SF concrete has an ability to withstand scraped area, disintegration, with better development achievability, usefulness, and surface completion.
5. Faseyemi Victor Ajilleye [5] closed concrete supplanting up to 10% with silica fume prompts an expansion in compressive strength for C30 grade of cement. From 15% there is a reduction in compressive strength for 3-, 7-, 14- and 28-days restoring periods. It was seen that the compressive strength of the C30 grade of cement was expanded from 16.15% to 29.24% and diminish from 23.98% to 20.22%. The greatest substitution level of silica fume was 10% for the C30 grade of cement.

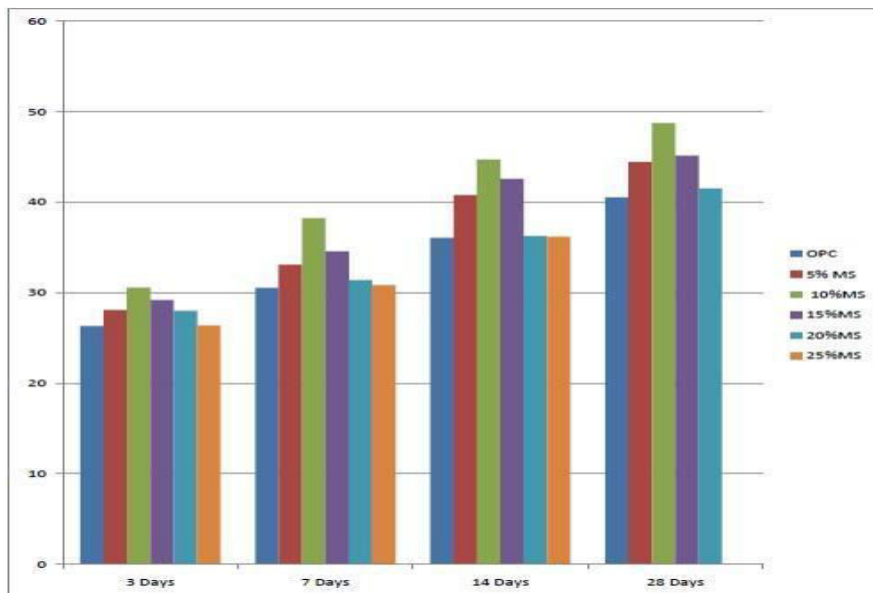


Figure 1: Relationship between compressive strength and days



6. N.K. Amudhavalli and Jeena Mathew [6] this examination presumed that with expansion in fineness of concrete consistency increments. Silica fume is having more noteworthy fineness than concrete and a more prominent surface region so the consistency increments incredibly when silica fume rate increments. The typical consistency increments about 40% when the silica fume rate increments from 0% to 20%. The 7- and 28-days compressive strength and flexural strength were gotten in the scope of 10% to 15% silica fume substitution level. Expansion in split elasticity past 10% silica fume substitution was practically inadmissible while expansion in flexural rigidity happened up to 15% substitution. Silica fume to have a more acceptable impact on the flexural strength when contrasted with elasticity. At the point when the blend was contrasted with another blend, the weight reduction and compressive strength rate were observed to be diminished by 2.23 and 7.69 separately when concrete was supplanted by 10% of silica fume.

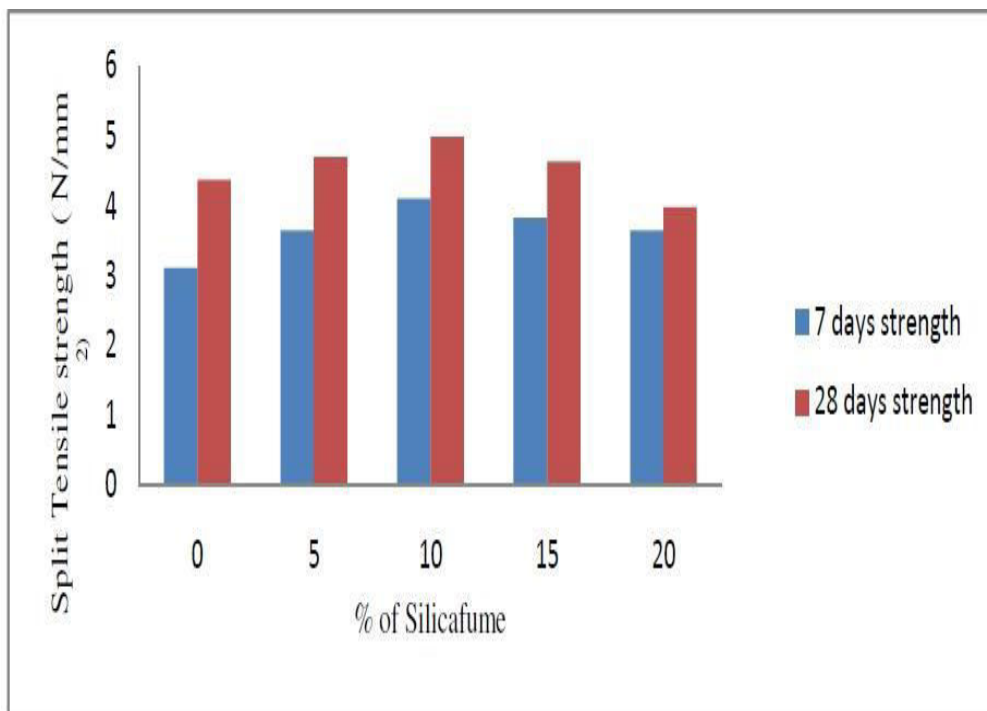


Figure 2: days, 28 days split tensile strength test result with optimum SF replacement

7. Vishal S. Ghutke et. al.[7], closed from their outcome that silica fume was a superior substitution of concrete. The strength of cement acquired in silica fume was high when contrasted with the substantial of just concrete. They performed different tests by changing the water-concrete proportion from 0.5 to 0.6 and examined their outcomes which closed - As the water-concrete proportion builds the strength of substantial abatements. The objective worth of compressive strength can be accomplished at 10% substitution of silica fume. The strength of 15% substitution of concrete by silica fume was more noteworthy than the typical cement. Accordingly, the ideal silica fume substitution rate fluctuates from 10% to 15%. Compressive strength diminishes when the concrete substitution was above 15% silica fume.

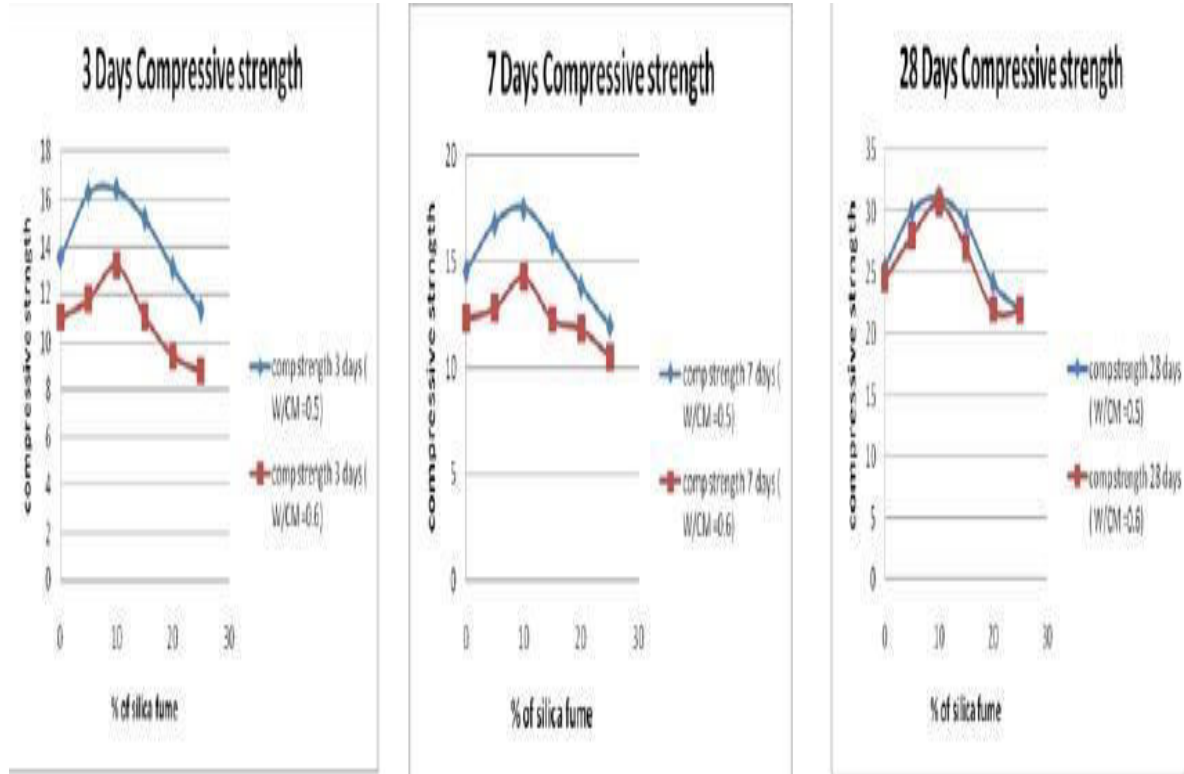


Figure 3: 3 days, 7 days, 28 days compressive strength result

### III. CONCLUSION

This survey paper reasons that: With the expansion in functionality the compressive strength diminishes. The ideal supplanting of concrete with silica fume 5% to 15% prompts an expansion in compressive strength though the rate substitution of 20% prompts declines in compressive strength. Variety of w/c proportion affects compressive strength of cement. With the expansion in w/c proportion the compressive strength diminishes and the other way around. Expansion of silica seethe in legitimate extent further develops solidness assault by acidic waters and working on substantial conditions. Silica rage having high fineness prompts high ordinary consistency. Silica seethe gives a higher strength of compressive strength when contrasted with some other material like fly debris, GGBS. As the SF concrete is more reduced and in this manner more strong in nature and consequently with some level of value control, it very well might be utilized in spots of development where there is an opportunity of compound assault, ice activity and so forth Also with 10% of concrete supplanted by silica rage, the trademark strength of higher grade of concrete cement to be specific M25 is accomplished simply by utilizing the M20 grade planned blend extent and thus this SF cement can unquestionably be utilized as an enhancement to M20 grade ordinary cement with essentially 4% of cost decrease. Ultimately with great quality control, high early strength can be accomplished in SF substantial which might be valuable in different underlying developments like tall structures, spans, stacks, machine establishments, runways, and so forth wherein, the time span of culmination opposite the economy is a significant driven factor for the designated reason just as for the workers for hire and proprietors the same as this substantial will gives speedy stage by stage or floor to floor development.



#### REFERENCES

- [1] Ray, I, De, An and Chakraborty, Fifth Conference on Concrete Technology for High Slump Concrete, Vol 1, p.p 86-93
- [2] Joshi, N. G. Bandra – Worli Sea Link: Evolution of HPC blends containing Silica Fume, Indian Concrete Journal, (Oct. 2001), pp. 627-633
- [3] Saini, S, Dhuri, S. S, Kanhere, D. K, Momin, S. S. Superior Performances concrete for a metropolitan viaduct in Mumbai, Indian Concrete Journal, (Oct. 2001), pp. 656-664.
- [4] Vishnoi, R. K. Gopalakrishnan, M.: Tehri Dam Project: Silica Fume in High-Performance Concrete for Ensuring Abrasion Erosion Resistance, Proceedings coordinated by Indian Society for Construction Materials and Structures, (February 2003), pp. 28-40.
- [5] Faseyemi Victor Ajileye "Examinations on Microsilica (Silica Fume) As Partial Cement Replacement in Concrete" Global Journal of Researches in Engineering Civil and Structural designing Volume 12 Issue 1 Version 1.0 January 2012. Online ISSN: 2249-4596 and Print ISSN: 0975-5861. PP.17-23.
- [6] N. K. Amudhavalli, Jeena Mathew "Impact of Silica Fume on Strength and Durability Parameters of Concrete" International Journal of Engineering Sciences and arising Technologies, August 2012, Volume 3, Issue 1, pp: 28-35.
- [7] Prof. Vishal S. Ghutke, Prof. Pranita S. Bhandari "Impact of Silica Fume on Concrete". 2014. IOSR Journal of Mechanical and Civil Engineering (IOSR-JMCE), e-ISSN: 2278-1684, p-ISSN:2320-334X, PP 44-47.
- [8] Abdulaziz A. Bubshait, Bassam M. Tahir and M. O. Jannadi, "Utilization of Microsilica in Concrete Construction", Article 1996
- [9] Faseyemi Victor Ajileye "Examinations on Microsilica (Silica Fume) As Partial Cement Replacement in Concrete" Global Journal of Researches in Engineering Civil and Structural designing Volume 12 Issue 1 Version 1.0 January 2012. Online ISSN: 2249-4596 and Print ISSN: 0975 5861. PP. 17-23.



**Impact Factor:  
7.569**



# INTERNATIONAL JOURNAL OF INNOVATIVE RESEARCH

IN SCIENCE | ENGINEERING | TECHNOLOGY

 9940 572 462  6381 907 438  [ijirset@gmail.com](mailto:ijirset@gmail.com)



[www.ijirset.com](http://www.ijirset.com)

Scan to save the contact details