



e-ISSN: 2319-8753 | p-ISSN: 2320-6710

IJIRSET

International Journal of Innovative Research in
SCIENCE | ENGINEERING | TECHNOLOGY

INTERNATIONAL JOURNAL OF INNOVATIVE RESEARCH

IN SCIENCE | ENGINEERING | TECHNOLOGY

Volume 10, Issue 2, February 2021

ISSN INTERNATIONAL
STANDARD
SERIAL
NUMBER
INDIA

Impact Factor: 7.512

9940 572 462

6381 907 438

ijirset@gmail.com

www.ijirset.com



Enhancement of Multilingual Search Indexing using Web Page Ranking System

Manju More E¹, G Sunilkumar², Manjunathswamy B E³, Thriveni J⁴, Venugopal K R⁵

Department of Computer Science and Engineering, Vijaya Vittala Institute of Technology, Bangalore, Karnataka, India ¹

Department of Computer Science and Engineering, University Visvesvaraya College of Engineering, Bangalore, Karnataka, India ²

Department of Computer Science and Engineering, Don Bosco Institute of Technology, Karnataka, India ³

Department of Computer Science and Engineering, University Visvesvaraya College of Engineering, Karnataka, India ⁴
Bangalore University, Karnataka, India ⁵

ABSTRACT: Ranking for multilingual data recuperation is a movement to rank files of different languages solely subject to their essentialness to the inquiry paying little brain to request's language. The main goal of a data retrieval process is to supply the data which is queried by the client. Sometimes the data that is requested by the client will not be available in the client's understandable language. While there are some times where the client will utilize the data in the language which is not understandable by the client which results in issues to resolve the queries posed by them. The essential objective behind Multilingual Information Retrieval is to find the relevant information available paying little heed to the language used in the request. We presented the web page ranking algorithm with illustrative circumstances by interfacing different pages. The results are dismembered by simulating the page algorithm using built simulating system.

KEYWORDS: Crawling, IR, Multilingual Indexing, Page Ranking

I. INTRODUCTION

As volume of information on sites is turning out to be enormous advance by step, hence there is a inspection for webpage proprietor to give fitting and relevant information to the client of site. Search over various dialects is alluring with the extension of various dialects over the Website. Multilingual data recovery (MLIR) for website pages in any case stays testing in light of the fact that the reports in different dialects must be taken a gander at and united fittingly. It is hard to evaluate the cross-lingual essentialness due to the information misfortune from inquiry understanding. Information recuperation system may be affected by the customer input request, and the recuperated focuses may be novel and not related to the significance of the looking through subject [1]. Moreover, the recuperated results may be affected by the positioning methodology [2] subordinate upon their significance and semantic association have a place with the subject of search [3][4]. To be amazing, web records need to see accurately what kind of information is available and present it to customers reliably.

Web indexes pass on web crawlers, in any case called bots, to review substance of web. Giving close thought to new destinations and to existing substance that has been changed as of late, web crawlers investigate data, for instance, sitemaps, URLs, and code to discover such substance being appeared.

When slithering of a webpage is done, the web crawlers need to close how to orchestrate the information. The ordering technique is where they review site data for positive or negative positioning signs and store it in the correct zone on workers.

At the hour of ordering method, the web indexes start making decisions on where to show express substance on the web crawler results page. Positioning is refined by assessing different components reliant on end client's request for quality and centrality as shown in the figure 1. Decisions are made during this cycle to choose the value any site can possibly provide for the end client. These decisions are guided by a count done in calculation. Perceiving how a calculation capacities urges you to make content that positions better position for each stage.

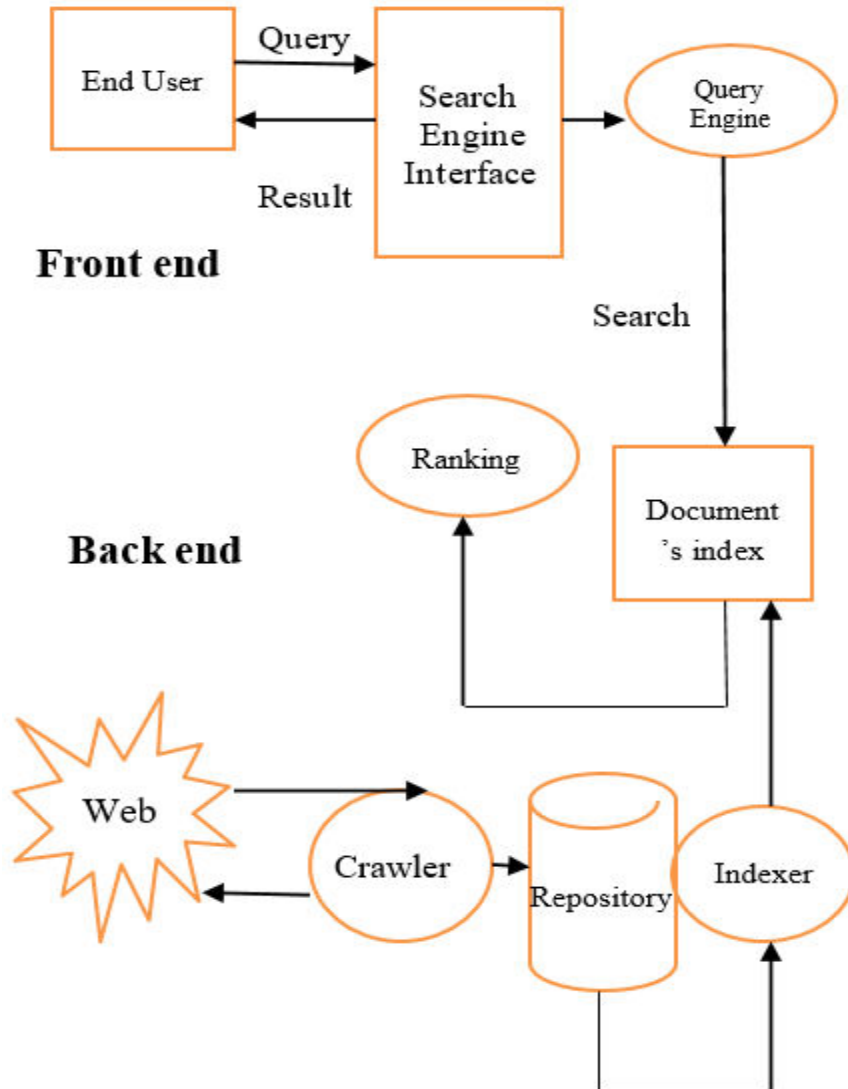


Figure 1: Architecture of Proposed System

The purpose behind the congruity ranking model is to draw up a rundown of requested docs according to the significance between those docs and the query looked. Disregarding the way that excessive, for effortlessness of utilization, the significance ranking model typically acknowledges each individual doc as information and registers a result that evaluates the correspondence between the doc and the solicitations. By then all the docs are masterminded in non-increasing request according to their results.

The early significance ranking models recouped records reliant on the presence of words from a request question. Models consolidate the Boolean model. On a fundamental level, these models can foresee if a record is pertinent to the requesting, anyway they can't predict the degree of significance. The Vector Space model (VSM) is introduced to extra model the degree of significance. The two docs and solicitations are presented as vectors in Euclid space in that the inner calculation of two vectors could be used to measure their similarities. The specific models fuse VSM, BM25, Language Model for Information Retrieval – LMIR, and LSI-Latent Semantic Indexing.

One of most standard models here is the implied PageRank model. PageRank uses as a essential guideline the likelihood of a client abstractly clicking associations will be taken to a explicit web page to speak to the likelihood of a association being weighted. Various counts have been made to moreover improve PageRank's precision and profitability. A few consideration on quickening calculations, while others base on refining Pages

A powerful ranking of words questioned has a critical capacity in capable looking for request words. There are and improving the model. The algorithms are moreover offered that can make a consistent positioning of hugeness over spamming joins. The Fig.2 shows the framework of the ranking model.

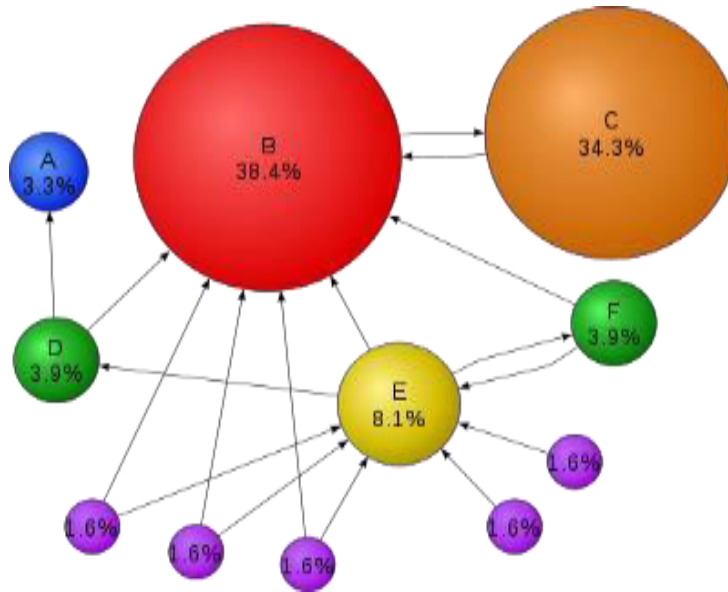


Figure 2: Framework of the ranking model

A significant number of the ranking models are been introduced in the data recuperation literary works. They can be largely arranged as centrality and significant to analyze the by and by critical calculations for situating of webpage pages through positioning to find their relative characteristics, limitations and give a future bearing to the investigation in the field of beneficial calculation for situating the position of the site pages.

II. THE RELEVANCY RANKING MODELS

Given the huge tally of ranking models, a standard rating strategy is relied upon to pick the best model. Clearly, appraisal has accepted a critical capacity all through the whole presence of data recovery. An IR is observational science and it is a pioneer in programming designing for understanding the noteworthiness of significance what's more, relative examination. IR is especially served by the Cranfield Experimentation strategy, that relies upon joint combinations of docs, various challenges related with the situating of pages with the ultimate objective that a few pages are made unmistakably for course reason and a couple of pages of the web don't have the idea of self-edification. For situating of pages, a couple of computations are proposed in the literary works. The expectation behind this paper information needs what's more, relevance assessments. A huge bit of the ranking models referred to above contains limits. In addition, a model faultlessly tuned to the readiness set a portion of the time performs incapably on unnoticeable test inputs. This is regularly brought overfitting. Another request is about the blend of ranking models. Given that there are various models in the writing, it is typical to review how to solidify those models furthermore, make a much incredible new model.

III. RELATED WORKS

A huge bit of the current pursuit procedures are requested into a couple of relative things in their parts, for instance, creeping and ordering yet vacillate in the way wherein they work. Search structures are figured out into arrangements, for instance, web lists that incorporate, Google and Yahoo, additionally Meta Search systems. Most of the standard request parts are uncommonly notable, yet their results are sometimes mistaken that have a lower precision and high audit. They have to find the ramifications of terms and enunciations used in pages and their associations [5][6][7]. Canny and Current inquiry structures, as SWSE, Swoogle, Falcons Object Search are arranged reliant on the semantic method to manage vanquish the standard issues. Swoogle is a structure that relies upon semantic slithering and ordering of web docs [8]. The most immense disadvantage of this structure is that it's definitely not an all-around valuable hunt system and is limited to predefined ontologies records. A semantic web engine has been made to recognize unlawful substance and with the account related assistance of the European Crime Prevention and Control Organization [9]. The



specific inspiration driving this engine is to separate the semantic substance and recognize the illegal writings. This engine involves three stages, and the principle stage joins the social event and indexing of data. The ensuing stage is the information assessment and isn't sufficient in huge colossal information. Finally, a third stage that helps out the client to recuperate the information anyway isn't a way to deal with rank outcomes. The designer in [10] had proposed a conscious structure for a web internet searcher subject to the field of cosmology, anyway inside Arab destinations. It characterized the Arabic language into a movement of classes, characteristics, and associations. However, it manages Arabic only and in unequivocal districts as it requires some venture to approve the task. Authority [11] had developed a semantic pursuit system that relies upon four rule sections.

In [12], specialists were based on the examination area which proposed to avoid jumbling results by situating question consequences of a Sparkle Protocol and RDF Query Language (SPARQL) request. Wrong, those conveyed a novel method that supports both watchword examination and widening positioning measures. The makers in [13][14] proposed a novel strategy for positioning technique. The characteristics needed for situating the significance of components are the amount of subjects, the amount of things, typical frequencies and tally of literals.

IV. METHODOLOGY

The web crawler associations are mysterious about their algorithms for ranking, and they have substantial defenses to be so. Their success depends upon it and if they needn't bother with their opponents to copy it, they would do well to make sure about their privileged insights. For web internet searcher, each page from the outset has a comparable worth. Assume that each page starts with an assessment of 100. At the point whileone more page associates with this page, the value of different page is increased to this fundamental worth. The page, which is source page doesn't leave behind its worth, yet when it associates with two unique pages only half of its PageRank is added to every single one of those pages.

In the arrangement spoke to in Fig.2, page P associates with Q and R and in making so it scatters half of its PageRank to all of them, by keeping its basic 50. Exactly when R by then associates with S and T, it right now has more PageRank to suitable, exhibited in Fig.3.

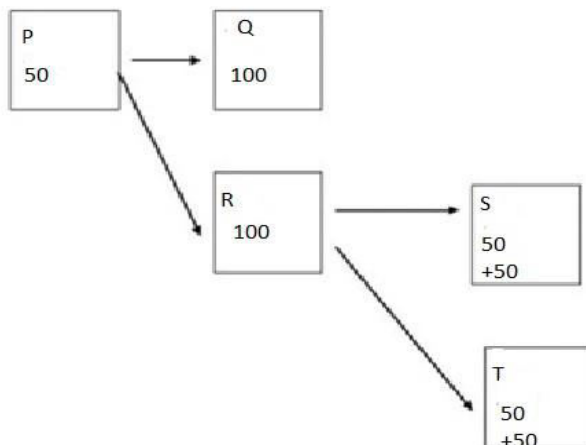


Figure3:Illustration of Webpages

In the above methodology, a page may associate with other, that itself would interface be able to back to past. For this circumstance the PageRank figuring gets round. Each page in a site can interface with various pages in a comparable site and along these lines, the site offers PageRank to its self pages. The after effect of this is, the PageRank it can scatter to various objections is lower: it is putting its PageRank inside. If the pages of a site simply interface with outside pages, that should be 'spilling' PageRank. Calculation of PageRank is done using the accompanying figurings shown above.



$$ST(P)=(1-N)+N(ST(R1)/D(R1)+\dots+ ST(Rn) /D(Rn))$$

Where :

ST(R1)....ST(Rn) denotes page ranks of node connected to the target node.

D(R1)....D(Rn) denotes number of outgoing connections the other nodes have.

The internet searcher Google uses various factors in ranking. Of these, the PageRank calculation might be the most known. However, we use various factors other than PageRank. For example, if a doc contains the words 'normal' and 'fight' straightforwardly near each other, it very well might be more appropriate than a record discussing the Progressive War that winds up using the word 'normal' somewhere else on the page. Also, if a page fuses the words 'basic fight' in its title, that is a hint that it could be more huge than a report with the title 'nineteenth Century American Clothing.' also, if the words 'normal fight' appears to be a couple of times all through the page, that page will undoubtedly be about the normal fight than if the words simply show up once.

V. IMPLEMENTATION

We use the following steps to show the implementation of Ranking Algorithm.

Step 1: Instate the rank estimation of each page by $1/n$. Where n is all out no. of pages to be ranked. We Assume to indicate the n pages by an Array of n components. At that point $P[i] = 1/n$ where $0 \leq i < n$.

Step 2: Assume the value for the factor such that $0 < N < 1$.

Step 3: Repeat for each node value i where $0 \leq i < n$. Assume that ST is an array of n number of elements which corresponds to PageRank for each web page.

$$ST[i] \leftarrow 1-N$$

For all pages D such that D links to ST[i] do $ST[i] \leftarrow ST[i] + N * P[D] / D_n$

D_n indicates number of outgoing edges of D.

Step 4: Renew the values of P $P[i] = ST[i]$ for $0 < i < n$

Reiterate the process from step 3 until the rank values of two successive values match.

The necessary framework has been implemented by creating simulation bundle for page ranking utilizing Java based instruments and advancements, which sends HTTP Requests, perform crawling, indexing and ranking cycles. The proposed usage is run on multicore PC and the outcomes are examined as it needs to be. The outcomes investigated by making joins between 7 pages. The web pages are spoken to utilizing diagram appeared in Fig.4, where every hub speak to page, which are marked from 1 to 7. The connections are set up between website pages utilizing edges in the diagram.

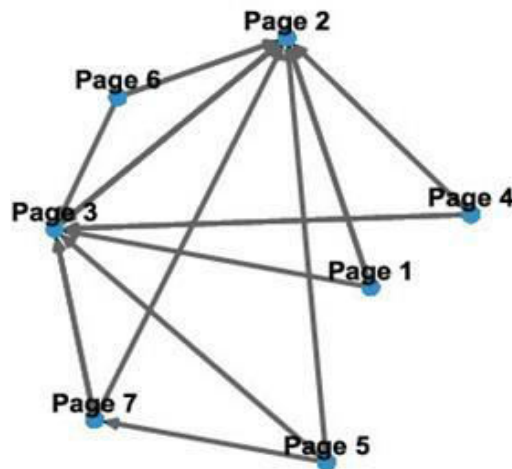


Figure 4: Directed Graph showing relationship between web pages

The code is executed by contributing the graph. As per the connections in the graph, the values are entered in the matrix. We show the Representation for hyperlink matrix A as:

$$A_{ik} = \frac{1}{H_k} \quad \text{if } M_k \in O_i$$

$$0 \quad \text{otherwise and } Q = [Q(M_i)]$$

$$\rightarrow Q = AQ$$

Where Q is an eigenvector of A with eigenvalue of 1

VI. EXPERIMENTAL RESULTS

The simulation code is executed by contributing the chart. As indicated by the connections in the chart, the qualities are entered in the squares in the framework to one side as appeared in the screen capture given in Fig.5 underneath.

Table 1:Pagerank of Different Pages in Graph at different iterations

Pages	Iteration 1	Iteration 2	Iteration 3
1	0.209877	0.24569	0.325689
2	0.226543	0.245613	0.239799
3	0.269532	0.465349	0.643245
4	0.243456	0.729876	1.23498
5	0.345623	0.634568	0.876432
6	0.309876	0.589678	0.754328
7	0.319876	0.924567	1.245678

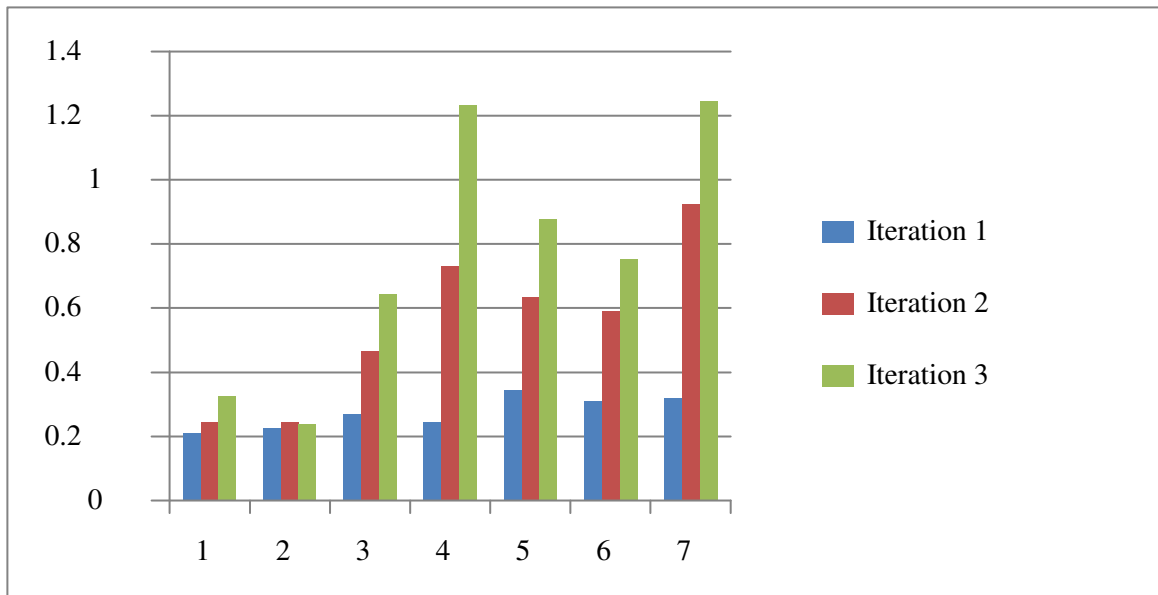


Figure 5:Page Ranking Analysis

The graphical examination of the page ranking outcomes reenacted 7 web pages as shown in Table-1, by fluctuating the directing element m , and various cycles are finished. The Fig.5 showed the ranking of web pages for the directing component (m) values with repeated number of iterations. We can see that the page 4 and page 7 is positioned high for all the estimations of m .

VII. CONCLUSION

Multilingual information recovery gives another worldview to investigating various dialects. It accepts an amazingly key part in a country like India having a wide arrangement of neighborhood dialects. An ordinary web crawler ought to use site page ranking procedures reliant on the specific requirements of the clients because the ranking estimations give a reasonable situation to resultant pages. In the wake of encountering the far reaching examination of calculations for ranking of pages against the various limits, for instance, approach, input limits, significance and essentialness of results, it is assumed that current calculations have hindrances with respect to time response, precision of results. The work done in this paper applies the PageRank program in the Web, computes PageRank values by PageRank algorithm. The recreation results are appeared for the PageRank considering numerous site pages with various benefits of directing component m and emphases. Later on work, we will focus more on exactness and accuracy of page positioning utilizing more up to date advancements.

REFERENCES

- [1] G. Sudeepthi, G. Anuradha, and M. S. Babu, (2012) A survey on semantic Web search engine. *Int. J. Comput. Sci. Issues*, 9, 241–245.
- [2] R. Sachdeva and S. Gupta (2018) A literature survey on page rank algorithm. *Int. J. Sci. Eng. Res.*, 9, 10–19.
- [3] H. Dong, F. K. Hussain, and E. Chang, (2008) A survey in semantic search technologies, In *Proc. 2nd IEEE Int. Conf. Digit. Ecosyst. Technol.*, 403–408.
- [4] J. M. Kassim and M. Rahmany (2009). Introduction to semantic search engine, in *Proc. Int. Conf. Elect. Eng. Inform.* 2, 380–386.
- [5] M.M. El-gayar, &N. Mekky and A. Atwan and H. Soliman (2019). Enhanced Search Engine using Proposed Framework and Ranking Algorithm based on Semantic Relations. *IEEE Access*. 7, 139337 - 139349.
- [6] M. M. El-gayar, N. Mekky, and A. Atwan. (2015) Efficient proposed framework for semantic search engine using new semantic ranking algorithm. *Int. J. Adv. Comput. Sci. Appl.*, 6, 136–143.
- [7] R. Jain, N. Duhan, and A. K. Sharma (2015). Comparative study on semantic search engines. *Int. J. Comput. Appl.*, 131(14), 4–11.



- [8] M. Klusch, P. Kapahnke, S. Schulte, F. Lecue, and A. Bernstein (2004) Semantic Web service search: A brief survey, *Künstliche Intell.*, 30(2), 139–147.
- [9] L. Ding, T. Finin, A. Joshi, and R. Pan (2004). Swoogle: A semantic Web search and metadata engine. In Proc. 13th ACM Conf. Inf. Knowl. Manage. 1110– 1145.
- [10] L. Laura and G. Me (2015). Searching the Web for illegal content: The anatomy of a semantic search engine, *Soft Comput.*, 21(5), 1245– 1252.
- [11] L. Al-Safadi, D. Al-Rgebh, and W. AlOhal. (2013) A comparison between ontology-based and translation based semantic search engines for Arabic blogs, *Arabian J. Sci. Eng.*, 38(11), 2985–2992.
- [12] N. Tyagi and S. Sharma (2012). Weighted page rank algorithm based on number of visits of links of Web page, *Int. J. Soft Comput. Eng.*, 2(3), 2231– 2307.
- [13] S. Elbassuoni, M. Ramanath, R. Schenkel, and G. Weikum (2010). Searching RDF graphs with SPARQL and keywords, *IEEE Data Eng. Bull.*, 33(1), 16– 24.
- [14] D. Bollegala, Y. Matsuo, and M. Ishizuka (2011). A Web search engine-based approach to measure semantic similarity between words. *IEEE Trans. Knowl. Data Eng.*, 23(7), 977–990.



INNO  **SPACE**
SJIF Scientific Journal Impact Factor

**Impact Factor:
7.512**

ISSN INTERNATIONAL
STANDARD
SERIAL
NUMBER
INDIA



INTERNATIONAL JOURNAL OF INNOVATIVE RESEARCH

IN SCIENCE | ENGINEERING | TECHNOLOGY

 **9940 572 462**  **6381 907 438**  **ijirset@gmail.com**



www.ijirset.com

Scan to save the contact details