



e-ISSN: 2319-8753 | p-ISSN: 2320-6710

IJIRSET

International Journal of Innovative Research in
SCIENCE | ENGINEERING | TECHNOLOGY

INTERNATIONAL JOURNAL OF INNOVATIVE RESEARCH

IN SCIENCE | ENGINEERING | TECHNOLOGY

Volume 10, Issue 3, March 2021

ISSN INTERNATIONAL
STANDARD
SERIAL
NUMBER
INDIA

Impact Factor: 7.512

9940 572 462

6381 907 438

ijirset@gmail.com

www.ijirset.com



Review Paper on Retinal Blood Vessels Segmentation to Detect Hypertension using Deep Learning

Payal Patankar¹, Mayank Namdev²

M. Tech. Scholar, Department of Computer Science and Engineering, SIRT, Bhopal, India¹

Assistant Professor, Department of Computer Science and Engineering, SIRT, Bhopal, India²

ABSTRACT: This paper presents an exhaustive audit of the guideline and utilization of profound learning in retinal picture examination. Many eye ailments regularly lead to visual impairment without appropriate clinical analysis what's more, clinical treatment. For instance, diabetic retinopathy (DR) is one such illness in which the retinal veins of natural eyes are harmed. The ophthalmologists analyze DR dependent on their expert information that is work escalated. Such methodologies use exact visual examination to recognize the anomaly of veins with improved execution over manual methodology. All the more as of late, AI, specifically, profound learning has been effectively actualized around there. In this paper, we center around ongoing advances in profound learning techniques for retinal picture examination. Albeit profound learning has been effectively actualized in different zones, we discovered just 17 papers so far spotlight on retinal vein division. This paper portrays every profound learning based division technique as depicted in the writing.

KEYWORDS: - Retinal colour fundus images, convolutional neural networks, retinal vessels segmentation.

I. INTRODUCTION

Eye infections, for example, diabetic retinopathy (DR) and Diabetic maculopathy (MD), are the fundamental driver of worldwide visual deficiency. MD has a long preclinical stage where visual sharpness isn't influenced and once the patient presents to the eye facility the vision misfortune can regularly not be recuperated. Early recognition can forestall malady movement and secure vision. In this way the study and the investigation of retinal vessel geometric attributes for example, vessel breadth, branch edges, and branch lengths have become the premise of clinical applications related to early conclusion and viable observing of retinal pathology.

Retinal picture appraisal by ophthalmologists is an indispensable step for identification of retinal pathology. The mechanized picture examination has been effectively applied in different clinical applications since 1982 [1], [2]. Targeting expanding both efficiency and the exactness, different programmed modernized clinical picture investigation approaches have been created from that point forward [3]. Picture division has been viewed as a wide application at that stage prior to the 1990s. As of late, more artificial insight based approaches, for example, managed techniques have gotten well known here. Example acknowledgment and AI techniques are exceptionally beneficial because of their accomplishment in clinical picture investigation framework [1], [4].

Nonetheless, executing a powerful electronic technique for clinical picture investigation is as yet a difficult assignment these days because of the multifaceted nature and heterogeneity of the retinal pictures [5]. Frequently it requires client cooperation to analyze the infections via looking through the most recognized highlights from the pictures [6]. There has been a reliable research exertion made in the territory of retinal picture handling. A few information mining approaches have focused on separating the most efficient highlights. Low-level highlights, for example, morphological highlights, shading highlights, vessel width, surface, sharpness of vessel limit just as the coarseness inside a vein have been joined, albeit some require progressed innovation and are not appropriate for remote facilities without prepared authorities. Center level highlights, for example, a saliency map extricated from fundus pictures are applied to prepare classier to extricate retinal veins [7].

Others treat such undertakings as understanding an ideal capacity in wording of limiting the vitality cost or separations. Models incorporate diagram based methodology, K-closest neighbors (KNN), Gaussian blend model and entropy thresholding based [8], [9] model.

Distinctive AI based methodologies have appeared better execution here. Bolster Vector Machine (SVM), choice tree, AdaBoost, Naive Bayes and Random Timberland [10], [11] are instances of these and have been examined by scientists. In addition, group of AI arranging calculations were proposed to improve the precision while consolidating the yields of various retinal picture handling calculations [3].

Profound learning based methodologies are playing a significant job in the division of computerized pictures, and these approaches beat existing techniques dependent on picture preparing methods. The fundamental bit of leeway of utilizing profound learning is the reasonableness of preparing of huge database for classification or division which makes profound learning based methodologies unique and compelling from different past actualized techniques. In 2006, a profound convolutional neural organize (CNN) structure was intended for various imaging errands of regular pictures [12] that expected to order unique highlights of shading pictures. AlexNet [12], VGGNet [13] and the commencement of the engineering of GoogLeNet [14] have been applied effectively to an enormous assortment of articles identification and semantic division. In the zone of retinal picture investigation, the CNN is utilized to recognize retinal vessels and to group fix highlights into various areas of vessels and in distinctive associating instances of the vessels. A few scientists have taken a shot at CNN based models for discovery of vessels in any case, the exactness decreases as the veins get littler in width.

II. LITERATURE REVIEW

Md. Ahasan et al. [1], the retinal fundus image contains important information associated with the visual abnormality. The blood vessel segmentation is important and mandatory for diagnosing various ocular fundus. Diabetic retinopathy affecting the retinal vascular structures is the leading and main causes of blindness. An algorithm for retinal blood vessel segmentation from retinal fundus images has been proposed in this article. The proposed retinal blood vessel algorithm is classified into four major steps. At first, the grayscale image is generated from the input RGB fundus image and applies anisotropic diffusion method to remove blur, while preserving edge. Then, the retinal image is enhanced and applies top hat transformation approach. After that, the enhanced image is divided into small sub-image and applies local property-based intensity transformation (LPBIT). Finally, the blood vessel is segmented using k-mean clustering from each sub-image. The DRIVE and the STARE data sets have used to check the performance of the proposed vessel segmentation algorithm. The experimental result has shown that the proposed algorithm achieves around 95% accuracy and 98% specificity, which is better than many states of the art methods.

S. Soomro et al. [2], this paper presents a novel two-stage image segmentation method using an edge scaled energy functional based on local and global information for intensity inhomogeneous image segmentation. In the first stage, we integrate global intensity term with a geodesic edge term, which produces a preliminary rough segmentation result. Thereafter, by taking final contour of the first stage as initial contour, we begin second stage segmentation process by integrating local intensity term with geodesic edge term to get final segmentation result. Due to the suitable initialization from the first stage, the second stage precisely achieves desirable segmentation result for inhomogeneous image segmentation.

T. A. Soomro et al. [3], two stage segmentation technique not only increases the accuracy but also eliminates the problem of initial contour existed in traditional local segmentation methods. The energy function of the proposed method uses both global and local terms incorporated with compacted geodesic edge term in an additive fashion which uses image gradient information to delineate obscured boundaries of objects inside an image. A Gaussian kernel is adapted for the regularization of the level set function and to avoid an expensive re-initialization. The experiments were carried out on synthetic and real images. Quantitative validations were performed on Multimodal Brain Tumor Image Segmentation Benchmark (BRATS) 2015 and PH^2 skin lesion database. The visual and quantitative comparisons will demonstrate the efficiency of the proposed method.



Table 1: Summary of Literature Review

Title	Author/ Publication	Methodology	Parameters
Retinal Blood Vessel Extraction Based on Adaptive Segmentation Algorithm	Md. AhasanKabir/ IEEE 2020	Blood vessel is segmented using k-mean clustering and enhance image local property-based intensity transformation	Accuracy = 95.47 %, Sensitivity= 83.27%
Hybrid two-stage active contour method with region and edge information for intensity inhomogeneous image segmentation	S. Soomro, A. Munir, and K. N. Choi/ IEEE 2018	global and local terms incorporated with compacted geodesic edge technique	Dice coefficient = 0.9934 Sensitivity = 0.9897 Specificity = 0.9625
Impact of ICA-based image enhancement technique on retinal blood vessels segmentation	T. A. Soomro, T. M. Khan, M. A. U. Khan, J. Gao, M. Paul, and L. Zheng/ IEEE 2018	Design independent component analysis (ICA) for noise removal and color fundus image	Dice coefficient = 0.8947 Sensitivity = 0.789 Specificity = 0.9225

III. DEEP LEARNING

Deep learning is one of AI techniques. It comprises of progressive organized layers that can interpret input information to significant yields in a discovery model. Deep learning strategies include wide applications inside various research investigation, for example, graphical displaying of information, neural systems, parameters streamlining, picture investigation, design acknowledgment furthermore, signal preparing. Numerous profound learning models in different applications depend on the model, proposed by Yann LeCun for transcribed acknowledgments by utilizing profound directed backpropagation convolutional organize [6].

Deep neural system is a straightforward ordinary neural system with progressively concealed layers with the goal that it gets further. The profound neural engineering can be considered as the speculation of a direct or on the other hand calculated relapse neural system designs. Each neuron is enacted in a straight mix of information and a few learning parameters, which are trailed by a component savvy nonlinear development.

A neural system design comprises of various layers L of a weighted neuron through which enactment is performed. Multi-Layer Perceptron (MLP) is a class of feedforward neural system with at least two layers between information and yield layers. The feedforward implies that information owes one way from contribution to yield layers. The backpropagation learning calculation is utilized to prepare the MLP. MLP is utilized in numerous applications, for example, design classification, acknowledgment, guess, and expectation. MLP for the most part takes care of the issues which are not directly distinct as appeared in Fig. 1.

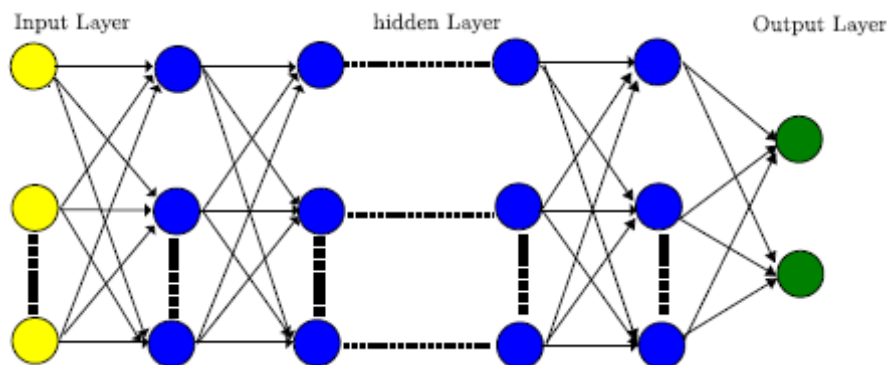


Fig 1: Deep neural network.

In any case, there are elective strategies to prepare an entire profound neural arrange start to finish in a directed manner. These other option strategies can be better executed by specified sort of neural arrange, i.e., the convolutional neural system (CNN).

These days, CNN gets increasingly well known in clinical picture preparing what's more, turns into a decent decision for the analysts in clinical picture investigation. The accompanying subsections clarify the fundamental sorts of neural systems and bit by bit usage of the technique with their impediments and points of interest.

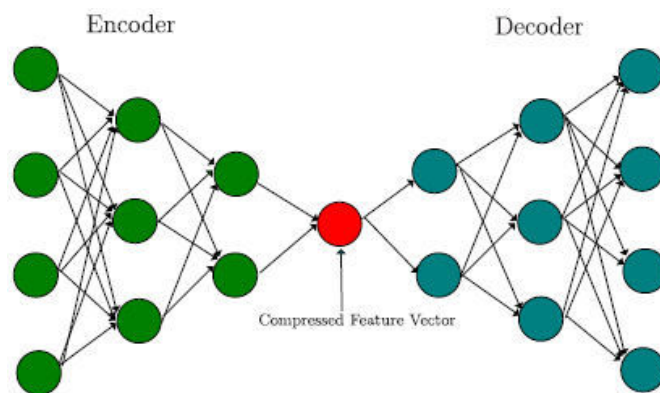


Fig 2: Deep auto-encoder (AE)

IV. SEGMENTATION

Picture division is the way toward appointing a name to each pixel in a picture. In this way, it is like isolating the picture into different areas with the goal that all pixels in a single locale have normal attributes. At the picture level, the areas have important shapes and they can help in examining and comprehension the picture. Picture division is a computationally costly process since it is done on the pixel level of the picture.

It has numerous pragmatic applications in various elds, such as item identification [7], face and person on foot discovery and limitation [5]. In the clinical eld, picture division is used to find tumors [1], measure tissue volumes [2], and retinal vessels division [3].

Prior to presenting profound learning methods, regular approaches have been proposed to tackle picture division undertaking, for example, thresholding, grouping strategies, furthermore, histogram-based strategies. These days, profound learning speaks to a main edge innovation that is approved by the examination network, where neural system existed for decades [4]. Specifically, profound learning alludes to explain the imaging issue through preparing a neural system model.

The word profound contains having various layers of preparing picture/signal units, which is like the structure of the neurons in the cerebrum.

The primary preferred position of profound learning is their capacity to consequently gain proficiency with the best highlights as indicated by their preparing dataset. This permit maintaining a strategic distance from the tedious procedure of manual determination of the highlights of a specifictask it is possible that it is classification or relapse. In retinal vessels division, fragmenting small vessels is a very difficult task as most show strategies missed them during the division process, while the robotized discovery of retinalveins has better execution by utilizing the profound learning strategies. Deliberately planned CNN can identify these small vessels and section them; even it is typically difficult for anmaster to break down these veins as it is accounted for in [5].

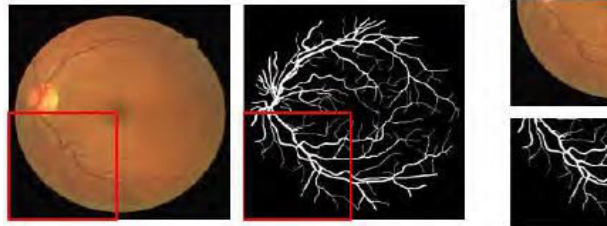


Fig. 3: Issue of segmentation of retinal vessels particularly small vessels.

All in all picture division, one of the main engineering proposed for picture division and thick forecast was Fully Convolutional Network (FCN) [6] in 2014. From its name, one can see that this engineering is made out of convolutional layers without utilizing completely associated layers.

IV. METHODOLOGY

Fundamentally, CNNs are an exceptional kind of artificial neural systems (ANNs) where the CNNs are intended to process information with framework like structure. They get a pile of info pictures with framework like structure and yield a gathering of highlight maps that can be utilized for illuminating various assignments. To structure a CNN model for sectioning the retinal vessels, the model ought to have the option to produce the sectioned picture precisely and the accessible databases which will be utilized for preparing ought to be thought of. Additionally, the misfortune work that will be utilized for preparing the model ought to be chosen cautiously. In classification issues for instance, the CNN models comprise of a back to back convolutional layers followed by initiation capacities for the non-linearity and afterward pooling layers to diminish the element maps size and pool the highlights. Toward the finish of the models, completely associated layers are utilized as assignment specific layers to create the ideal yield. Consider the discretionary initiation work $f(x)$. The inference of the initiation work is signified by $F(x)$.

$$y_{-ink} = \sum_i z_i w_{jk} \quad (1)$$

$$Z_{-inJ} = \sum_i v_{ij} X_i \quad (2)$$

$$Y_k = f(y_{-ink}) \quad (3)$$

The error to be minimized is

$$E = 0.5 \sum_k [t_k - y_k]^2 \quad (4)$$

$$\frac{\partial E}{\partial w_{jk}} = \frac{\partial}{\partial w_{jk}} 0.5 \sum_k [t_k - y_k]^2 \quad (5)$$

$$= \frac{\partial}{\partial w_{jk}} (0.5 [t_k - t(y_{ink})]^2) \quad (6)$$

$$= -[t_k - y_k] \frac{\partial}{\partial w_{jk}} f(y_{-ink}) \quad (7)$$

$$= -[t_k - y_k] f(y_{-ink}) \frac{\partial}{\partial w_{jk}} (y_{ink}) \quad (8)$$

$$= [t_k - y_k] f^1(y_{ink}) Z_j \quad (9)$$

Let us define

$$\delta_k = -[t_k - y_k] f^1(y_{-ink}) \quad (10)$$

Weight on connection to the hidden unit Z_j

$$\frac{\partial E}{\partial v_{ij}} = - \sum_k [t_k - y_k] f(y_{ink}) \frac{\partial}{\partial v_{ij}} y_k \quad (11)$$

$$= \sum_k [t_k - y_k] f(y_{ink}) \frac{\partial}{\partial v_{ij}} y_{-ink} \quad (12)$$

$$= \sum_k \delta_k \frac{\partial}{\partial v_{ij}} y_{-ink} \quad (13)$$

A high learning rate prompts fast adapting yet the loads may sway, while a ML rate prompts SVM.

V. CONCLUSION

After the study of retinal blood vessels segmentation methods, three steps in using color retinal fundus images have been identified. We conclude that a robust computerized system of DR screening based on deep learning method has the capability to give accurate results for detection of retinal image features such as pathologies and retinal blood vessels. It clearly shows that the performance of the existing methods drops due to low contrast of tiny vessels which are not extracted easily. There exist a few other issues in retinal images such as non-uniform background (background pixels are much higher than blood vessels pixels), noise, varying and low contrast in different regions of the image, central light reflex, presence of abnormalities, etc. These issues make it tough to detect a tiny vessel, which still remains challenge in retinal image processing.

REFERENCES

- [1] Md. AhasanKabir, "Retinal Blood Vessel Extraction Based on Adaptive Segmentation Algorithm", IEEE Region 10 Symposium (TENSYP), 5-7 June 2020, Dhaka, Bangladesh, IEEE 2020.
- [2] S. Soomro, A. Munir, and K. N. Choi, "Hybrid two-stage active contour method with region and edge information for intensity inhomogeneous image segmentation," PLoS ONE, vol. 13, no. 1, 2018, Art. no. e0191827.
- [3] T. A. Soomro, T. M. Khan, M. A. U. Khan, J. Gao, M. Paul, and L. Zheng, "Impact of ICA-based image enhancement technique on retinal blood vessels segmentation," IEEE Access, vol. 6, pp. 3524_3538, 2018.
- [4] T. A. Soomro, J. Gao, T. M. Khan, A. F. M. Hani, M. A. U. Khan, and M. Paul, "Computerised approaches for the detection of diabetic retinopathy using retinal fundus images: A survey," Pattern Anal. Appl., vol. 20, no. 4, pp. 927_961, 2017.
- [5] S. Soomro, F. Akram, J. H. Kim, T. A. Soomro, and K. N. Choi, "Active contours using additive local and global intensity fitting models for intensity inhomogeneous image segmentation," Comput. Math. Methods Med., vol. 2016, Sep. 2016, Art. no. 9675249.
- [6] M. M. Fraz, P. Remagnino, A. Hoppe, B. Uyyanonvarab, R. Rudnickac, C. G. Owenc, and S. A. Barmana, "Blood vessel segmentation methodologies in retinal images_A survey," Comput. Methods Programs Biomed., vol. 108, no. 1, pp. 407_433, 2012.
- [7] S. Soomro, A. Munir, and K. N. Choi, "Hybrid two-stage active contour method with region and edge information for intensity inhomogeneous image segmentation," PLoS ONE, vol. 13, no. 1, 2018, Art. no. e0191827.
- [8] U. T. V. Nguyen, A. Bhuiyan, L. A. F. Park, and K. Ramamohanarao, "An effective retinal blood vessel segmentation method using multi-scale line detection," Pattern Recognit., vol. 46, no. 3, pp. 703_715, 2013.
- [9] X. Xu, W. Ding, M. D. Abrámoff, and R. Cao, "An improved arteriovenous classification method for the early diagnostics of various diseases in retinal image," Comput. Methods Programs Biomed., vol. 141, pp. 3_9, Apr. 2017.
- [10] K. Narasimhan and K. Vijayarekha, "Automatic grading of images based on retinal vessel tortuosity analysis," Indian J. Sci. Technol., vol. 8, no. 29, pp. 1_5, 2015.
- [11] T. A. Soomro, T. M. Khan, M. A. U. Khan, J. Gao, M. Paul, and L. Zheng, "Impact of ICA-based image enhancement technique on retinal blood vessels segmentation," IEEE Access, vol. 6, pp. 3524_3538, 2018.
- [12] K. Bhatia, S. Arora, and R. Tomar, "Diagnosis of diabetic retinopathy using machine learning classification algorithm," in Proc. IEEE 2nd Int. Conf. Next Gener. Comput. Technol. (NGCT), Oct. 2016, pp. 347_351.
- [13] G. Litjens, T. Kooi, B. E. Bejnordi, A. A. A. Setio, F. Ciampi, M. Ghafoorian, J. A. W. M. van der Laak, B. van Ginneken, and C. I. Sánchez, "A survey on deep learning in medical image analysis," Med. Image Anal., vol. 42, pp. 60_88, Dec. 2017.
- [14] A. Krizhevsky, I. Sutskever, and G. E. Hinton, "ImageNet classification with deep convolutional neural networks," in Proc. Conf. Adv. Neural Inf. Process. Syst., 2012, pp. 1097_1105.



Impact Factor:
7.512



INTERNATIONAL JOURNAL OF INNOVATIVE RESEARCH

IN SCIENCE | ENGINEERING | TECHNOLOGY

 9940 572 462  6381 907 438  ijirset@gmail.com



www.ijirset.com

Scan to save the contact details