



e-ISSN: 2319-8753 | p-ISSN: 2320-6710

IJRSET

International Journal of Innovative Research in
SCIENCE | ENGINEERING | TECHNOLOGY



INTERNATIONAL JOURNAL OF INNOVATIVE RESEARCH

IN SCIENCE | ENGINEERING | TECHNOLOGY

Volume 10, Issue 3, March 2021

ISSN INTERNATIONAL
STANDARD
SERIAL
NUMBER
INDIA

Impact Factor: 7.512



A Survey on Similarity Measure-Based Possibilistic FCM with Label Information for Brain MRI Segmentation

Shraddha Sanjay Shinde, Dr. Shinde Sharmila

PG Student, Department of Computer Engineering, JSPM's College of Engineering, Hadapsar, India

Department of Computer Engineering, JSPM's College of Engineering, Hadapsar, India

ABSTRACT: This work deals with the implementation of easy algorithm for detection of range and shape of tumor in mind MR photos and identifies stage of tumor from the given area of tumor. Tumor is an out of control development of tissues in any piece of the frame. Tumors are of various kinds and they have diverse characteristics and various treatment. As it's far recognized, brain tumor is traditionally true and perilous attributable to its individual in the confined area of the intracranial hollow space (area shaped within the skull). most studies in evolved international locations display that the quantity of humans who have brain tumors were died because of the reality of inaccurate detection. normally, CT check or MRI that is directed into intracranial hole area produces a whole photocopy of brain. After researching a lot statistical evaluation which is based on the ones people whose are affected in mind tumor a few popular chance factors and signs have been observed. The improvement of generation in technological know-how day night tries to develop new strategies of remedy. This photo is visually tested by using the health practitioner for detection prognosis of mind tumor. however this technique accurate determines the accurate of level length of tumor and also predicts the disease info from the place of tumor. This work makes use of segmentation of brain tumor based on the expectancy maximization and fuzzy c-manner algorithms. This approach permits the segmentation of tumor tissue with accuracy and reproducibility similar to manual segmentation. in addition, it moreover reduces the time for analysis and predicts the ailment info from the given area of tumor.

KEYWORDS: Machine Learning, Tumor extraction, Expectation Maximization, fuzzy c means clustering, MRI image;

I. INTRODUCTION

Deep Learning concept is a subset of device mastering. it's miles a device gaining knowledge of concept and features in a comparable manner, however its capabilities are one of a kind. Deep learning is a specially of gadget learning concept that ac hive wonderful power and insensibility via mastering to show the sector as nested order Of standards, with each concept described with regards to easy standards, and more abstract representations degree in phrases of much much less summary ones. Magnetic resonance imaging (MRI) is an powerful technique to diagnose ailment, by which the doctor can intuitively check a patient's body structure and effectively analyze the possibility of infection. but, each patient have masses of medical snap shots, so it is a outstanding dare to technique and examine the huge amount of medical picture statistics. therefore, innovative health care is an critical studies direction to help doctors in control scientific big data. In particular, it is tough to discover the images containing nodules, which ought to be analyzed for assisting early mindmost cancers diagnosis, from a big variety of MRI experiment snap shots.

On this work, right here techniques are used for segmentation, EM clustering set of rules and Fuzzy C Clustering algorithm . So this technique offers the correct and clear result for brain tumor detection and segmentation from MRI photographs. Tumor is due to the out of control development of the tissues in any part of the human frame. The tumor can be primary or secondary. If it's miles a basis, then it's far called primary. If the a part of the tumor is increase to any other region and construct as its very own then it's miles called secondary. The expert gives the treatment for tumor. So detection of tumor may be very crucial for that similarly destiny treatment. The life of the affected person who stricken by the mind tumor will grow if it's miles detected at modern-day stage. as a way to grow the lifetime about 1 to two years. usually the brain tumor cells are of types particularly that are Mass and Malignant. The detection of the malignant brain tumor is maximum hard to mass tumor because it may be spread of the tissues in any a part of



the human body. on this proposed system we construct an utility on detection of brain tumor with the help of mind MRI photographs and are expecting the disorder facts from the given location of tumor.

1.1 Motivation

A reliable method for segmenting tumour would clearly be a useful tool. Currently, however, there is no method widely accepted in clinical practice for quantitating tumour volumes from MR images. The main objective of this paper is to detect the brain tumor of MRI image and calculating its area and identify stage of tumour which is easier, cost reducible and time saveable.

1.2 Problem Statement

There are some algorithms like thresholding method, region growing, using only k-means algorithm but all these algorithm are not able to extract all fine spatial characteristics of MRI image. Thus there is a problem with these algorithms as they are not successfully detecting the brain tumor in the image.

Brain tumor is a disease of the brain in which tumor cells (malignant) arise in the brain tissue. Tumor cells grow to form a mass of tumor tissue that interferes with brain functions such as muscle control, sensation, memory, and other normal body functions

II. RELATED WORK

Literature survey is the most important step in any kind of research. Before start developing we need to study the previous papers of our domain which we are working and on the basis of study we can predict or generate the drawback and start working with the reference of previous papers. In this section, we briefly review the related work on brain Tumour detection and segmentation.

J.selvakumar, A.Lakshmi and T.Arivoli in this paper, proposed a machine of picture registration and facts fusion theory adapted for the segmentation of MR images. This device gives an efficient and rapid way for diagnosis of the brain tumor known as k-way algorithm. Implanting the okay-mean set of rules which consists of a couple of phases. First phase includes registration of multiple MR pics of the mind taken along adjoining layers of brain. inside the secondsegment, those registered pix are fused to provide high quality image for the segmentation. in the end, segmentation is completed by way of advanced k-way algorithm with twin localization technique. [1]

Samir Kumar Bandhyopadhyay and Tuhin Utsab Paul on this challenge, we observe three algorithms specifically ok manner clustering, Expectation Maximization and the Normalized cuts and examine them for picture Segmentation. The segmentation technique addresses the hassle of segmenting a picture into different regions. So the we can analyze each k-mean and C-imply algorithm in easy manner [2].

A. Meena, Meena and Raja proposed an approach of Spatial Fuzzy C means (pet-SFCM) clustering algorithm on Positron Emission Tomography (puppy) experiment image datasets. The proposed FCM hit capable of join the spatial neighborhood records with classical FCM and updating the goal feature of each cluster. It exploits the segmentation which used for short fowl view for any hassle of ok-manner.[3]

Suman Tatirajua and Avi Mehta on this paper proposed ok-means and C-mean to extract the features from the images. ok-means and Fuzzy C- manner on this technique the tumor is extracted from the MR photograph and its exact role and the form additionally determined. The level of the tumor is displayed based on the quantity of vicinity calculated from the cluster. [4]

Ajala Funmilola A, Oke O.A, Adedeji T.O and Alade O.M, Adewusi EA Funmilola et al proposed the fuzzy k-C-approach method, which contains extra of Fuzzy C-way houses than that of ok-approach. The F-okay-C manner focused attention on Clustering methods. these okay-suggest and C-imply algorithms had been blended collectively to come up with every other method called fuzzy k-c-manner clustering algorithm, which has a higher result in phrases of time utilization. [5]

Beshiba Wilson and Julia Punitha Malar Dhas Wilson and Dhas used okay-way and Fuzzy C-method respectively to locate the iron in brain using SWI method. Susceptibility-weighted imaging (SWI) is a neuro imaging technique,



which uses tissue magnetic susceptibility differences to generate a unique evaluation. The extraction of the iron place inside the mind is made with the aid of ok-way and Fuzzy C-method clustering technique. [6]

M.H. FazelZarandia, M. Zarinbal and M. IzadiThis paper proposed a dip take a look at of mind tumor. It describes exclusive shape of evaluation approaches. A brief expertise about tumor like glial tumor which cowl 30% of all mind tumors. [7]

Samarjit Das in the sphere of pattern reputation because of the essential involvement of human belief and inadequacy of standard arithmetic to address its complex and ambiguously defined system, special fuzzy techniques were applied as the right opportunity The proposed fuzzy c-mean approach Euclidean distance has been used to acquire the club values of the items in special clusters; inside the authors work at the facetof Euclidean distance they've used different distances like Canberra distance, Hamming distance to peer the differences in outputs. [8]

Vignesh Rajesh, BharathanVenkat, Vikesh Karan and M. PoonkodiThis paper has cautioned a synergistic and an powerful set of rules for the detection of brain tumors primarily based on Median filtering, ok method Segmentation, FCM Segmentation. The carried out strategies enhance the exceptional of the tumor pics received via the aid of MRI and then to come across the size of the tumors, approximate Reasoning is implemented. [9]

Krishna Kant Singh1 and Akansha Singh in this paper the author offers a examine of the numerous algorithms which are to be had for coloration pix, text and gray scale pix.Implementation of segmentation method those are colour-primarily based segmentation, pixel- based segmentation and aspect-based segmentation. [10]

III. PROPOSED METHOD

This approach is primarily based on deep learning to know so we work on MRI scan clinical snap shots of human brain the usage of Expectation Maximization clustering and fuzzy c method clustering techniques. First, photograph pre-processing step, we check the presence of noise in enter scientific (magnetic resonance imaging) photograph. If the noise is found in given image then we removed this noise the use of median clear out technique. To put off the noise from photo for similarly processing, we use median clear out method. After that additionally, the photograph segmentation is done through the use of Expectation- Maximization and Fuzzy C-manner strategies. Then the characteristic are extracted via using picture thresholding and sooner or later, approximate reasoning step to understand the tumor place and degree in MRI photo and additionally are expecting the sickness risk from result region of brain tumor.



IV. ARCHITECTURE

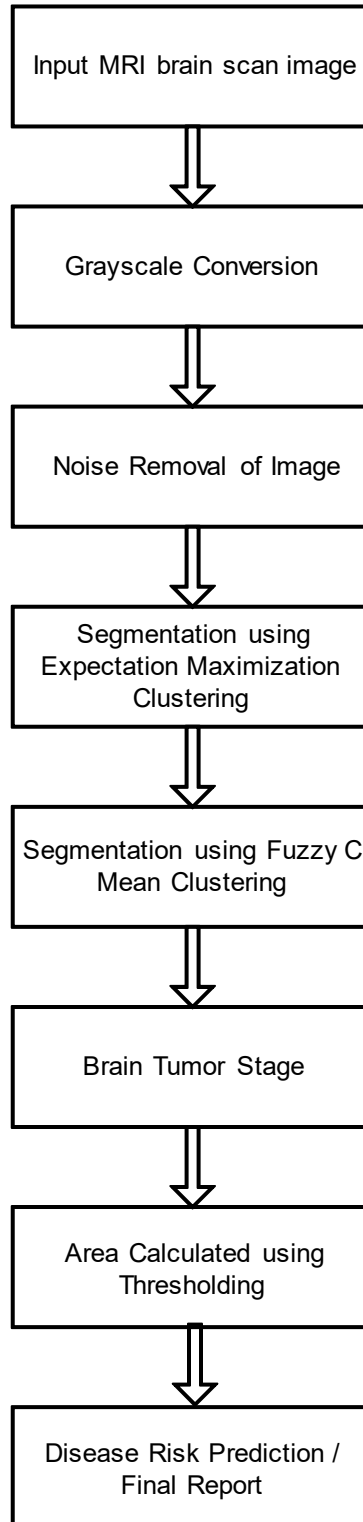


Fig.1 System Architecture



V. CONCLUSION

Brain Tumor segmentation is carried out on this supplied work. first off MRI image pre-processing is finished the use of median clear out method. If there's any noise are present within the MR image it is eliminated the use of Gaussian clear out method. The noise free input MRI photo is given as an enter to the fuzzy C suggest set of rules and tumor is extracted from the MRI image. after which segmentation using expectation-maximization (EM) set of rules for correct tumor shape extraction of malignant tumor and thresholding of output in function extraction. ultimately approximate reasoning step for calculating tumor place and position calculation and on the stop to indentify level of tumor from resultant vicinity of tumor i.e. Identifies stage of tumor that is less difficult, value reducible and time savable.

REFERENCES

1. J.selvakumar, A.Lakshmi and T.Arivoli, "Brain Tumor Segmentation and Its Area Calculation in Brain MR Images using K-Mean Clustering and Fuzzy C-Mean Algorithm", IEEE-International Conference On Advances In Engineering, Science And Management (ICAESM -2012) March 30, 31, 2012.
2. Samir Kumar Bandhyopadhyay and TuhinUtsab Paul, "Automatic Segmentation of Brain Tumor from Multiple Images of Brain MRI" International Journal of Application or Innovation in Engineering & Management (IJAIEM), Volume 2, Issue 1, January 2013.
3. A. Meena, "Spatial Fuzzy C-Means PET Image Segmentation of Neurodegenerative Disorder", A. Meena et.al / Indian Journal of Computer Science and Engineering (IJCSSE)
4. SumanTatirajua and Avi Mehta, "Avoiding energy holes in wireless sensor networks with nonuniform node distribution," IEEE Trans. Parallel Distrib. Syst., vol. 19, no. 5, pp. 710-720, May 2008.
5. AjalaFunmilola A, Oke O.A, Adedeji T.O and Alade O.M, Adewusi E.A, "Fuzzy k-c-means Clustering Algorithm for Medical Image Segmentation", Journal of Information Engineering and Applications ISSN 2224-5782 (print) ISSN 2225-0506 (online)Vol 2, No.6, 2012
6. M.H. FazelZarandia, M. Zarinbal and M. Izadi, "Systematic image processing for diagnosing brain tumors", Department of Industrial Engineering, Amirkabir University of Technology, P.O. Box 15875-4413, Tehran, Iran , journal homepage:www.elsevier.com/locate/asoc
7. Samarjit Das, "Pattern Recognition using the Fuzzy c-means Technique" International Journal of Energy, Information and Communications Vol. 4, Issue 1, February, 2013.
8. Vignesh Rajesh, BharathanVenkat, Vikesh Karan and M. Poonkodi, "Brain Tumor Segmentation and its Area Calculation in Brain MR Images Using K-Mean Clustering and Fuzzy C-Mean Algorithm", Department of Computer Science and Engineering, SRM University.
9. Krishna Kant Singh1 and Akansha Singh, "A Study of Image Segmentation Algorithms For Different Types Of Images", IJCSI International Journal of Computer Science Issues, Vol. 7, Issue 5, September 2010.
10. Beshiba Wilson and Julia Punitha Malar Dhas, "An Experimental Analysis of Fuzzy C-Means and K-Means Segmentation Algorithm for Iron Detection in Brain SWI using Matlab", International Journal of Computer Applications (0975 - 8887) Volume 104 - No 15, October 2014.



INNO  **SPACE**
SJIF Scientific Journal Impact Factor

**Impact Factor:
7.512**

ISSN INTERNATIONAL
STANDARD
SERIAL
NUMBER
INDIA



INTERNATIONAL JOURNAL OF INNOVATIVE RESEARCH

IN SCIENCE | ENGINEERING | TECHNOLOGY

 **9940 572 462**  **6381 907 438**  **ijirset@gmail.com**



www.ijirset.com

Scan to save the contact details