



e-ISSN: 2319-8753 | p-ISSN: 2320-6710

IJRSET

International Journal of Innovative Research in
SCIENCE | ENGINEERING | TECHNOLOGY

INTERNATIONAL JOURNAL OF INNOVATIVE RESEARCH

IN SCIENCE | ENGINEERING | TECHNOLOGY

Volume 10, Issue 3, March 2021

ISSN INTERNATIONAL
STANDARD
SERIAL
NUMBER
INDIA

Impact Factor: 7.512

9940 572 462

6381 907 438

ijirset@gmail.com

www.ijirset.com



Evaluating Retailers in a Smart-Buying Environment using Smart City Infrastructures

^[1]Roja.R, ^[2]Mrs.T.Gowri Thangam, M.com, M.Phil, B.Ed., ^[3]Ms.M.Radha

M.Com.,M.Phil.,MBA.,(Ph.D)

^[1]Student, Dept. of Commerce, Sakthi College of Arts and Science for Women, TamilNadu, India

^{[2][3]}Assistant professor, Dept. of Commerce, Sakthi College of Arts and Science for Women, TamilNadu, India

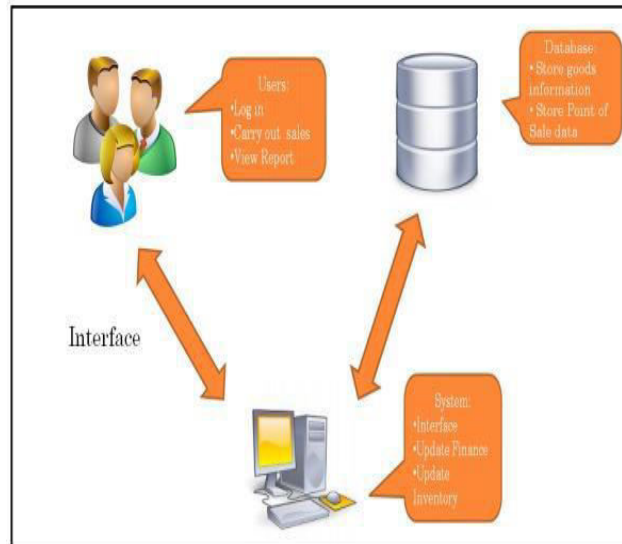
Abstract:-In modern cities, most citizens are interested in buying from e-shops or mostly buy from large shopping brands. This is a challenge for small and medium-sized retailers, who cannot afford to maintain IT infrastructures and skills. The ongoing R&D project SMARTBUY, tries to close this gap by providing a platform for small and medium-sized retailers to become the place where they can easily make their products and promotions visible online for local audiences, along with a mobile application for customers. An important issue in this context is the evaluation of the retailers. In this work, we introduce a new evaluation application for assessing the quality of the retailer services. Customers have the chance to rate the behavior and the offers that the retailers provide to them. This evaluation service is based on the SMARTBUY platform and is developed upon the Organic City Experimentation Platform. The evaluation application is a novel approach to generate knowledge for the retailer shops inside a future city using both data from open city datasets as well as feedback from citizens. Such an application is deemed useful to both customers, to identify retailers with best offers and services, and retailers as an incentive to improve their services.

I. INTRODUCTION

The idea of "Smart- City" is regularly alluded to in scholarly exploration, in writing, and in government reports yet is frequently deciphered conflictingly. A significant part of the advancement has been made in the previous decade, with numerous urban areas around the globe conveying innovations, for example, traffic the board. Be that as it may, while advancements in data the executives are integral to the city's change, no concurred systems can survey the advancement of the city's scaling back corresponding to data the board. In this paper, we survey how data the executives add to city change and recommend a system for partners and city organizers to use in arranging and actualizing city advancements and estimating progress and for analysts to utilize the improvement of their reasonable structures. We likewise consider the decisions looked by those answerable for or engaged with smoothing out the city, regarding plans of action and the centralization or decentralized data the board activities. The majority of the city's smoothing out tasks include the change of existing biological systems, specifically, urban communities, transport, and different other city credits, particularly with the spread of data the executives in the most successive and direct structure, not by the extreme changes, where exercises and players change. As the experience of the city, insight develops, and as innovation advances, more principal possibilities of change are open, with new players arising, existing players changing what they do and when they do and new connections advance among engineers. These advancements will have critical data on the board suggestions.

II. OVERVIEW OF THE PROJECT

In this section, the major features of smart cities and smart buildings are described. The analysis is performed on a literature overview basis. A review of smart building and smart city assessment is also performed.



System Architecture

III. MODULES DESCRIPTION

3.1.1. The Evaluation of the Retailers

◆ Quality of the Service

➤ Refers to the service-quality delivery of a store and it has a major impact on the consumer's behavior regarding a shop.

◆ Politeness

➤ Assesses the kindness and politeness of there tailer to the costumers.

◆ Value for Money

➤ Refers to the quantity and quality of the purchased goods that will be exchanged for one monetary unit.

◆ Discount Policy assesses

➤ The overall strategy and possible deals that a certain retailer provides to its customers along with the final profit for the customer.

3.1.2. Describing the Retailers

“**Location**”: contains a latitude longitude pair as a Geo Point to describe the retailer’s physical location inside the city. The physical location can be used to run spatial queries for retailers near the citizen’s location.

“**Description**”: provides a free text description of the products the retailer offers. This description can be used to perform text-based search for limiting the results when citizens search for specific categories of retailers.

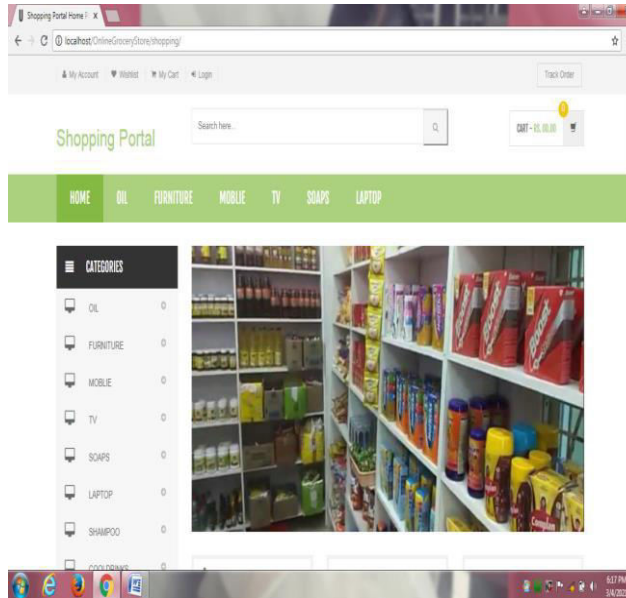
“**Name**”: the name of the retailer’s shop that can be used for display and search purposes.

“**Contact**”: various contact methods can be used to allow citizens to contact the retailers directly for information about their shops or products.

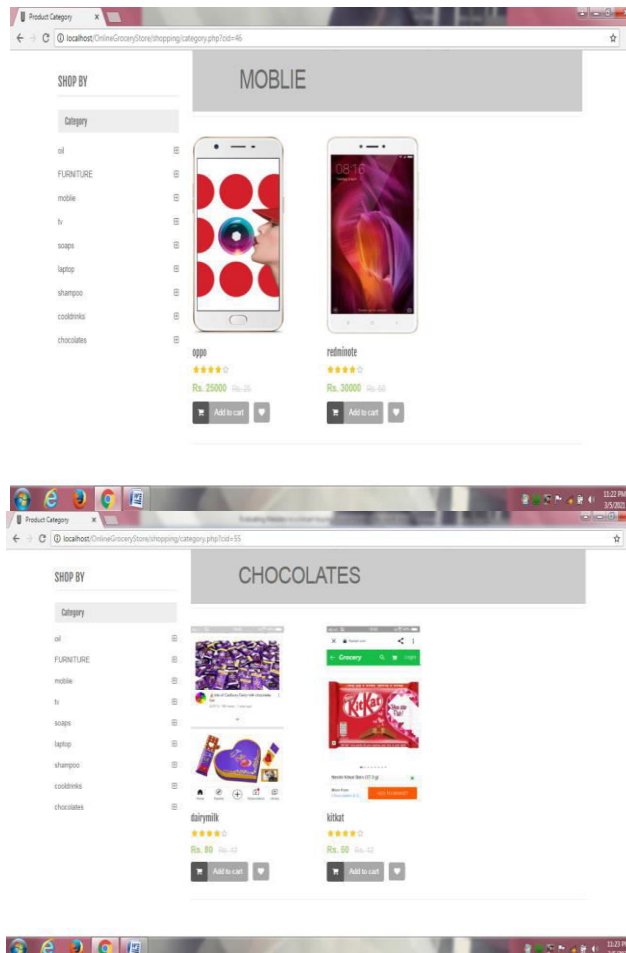


IV. SCREEN SHOTS

4.1.1 HOME PAGE

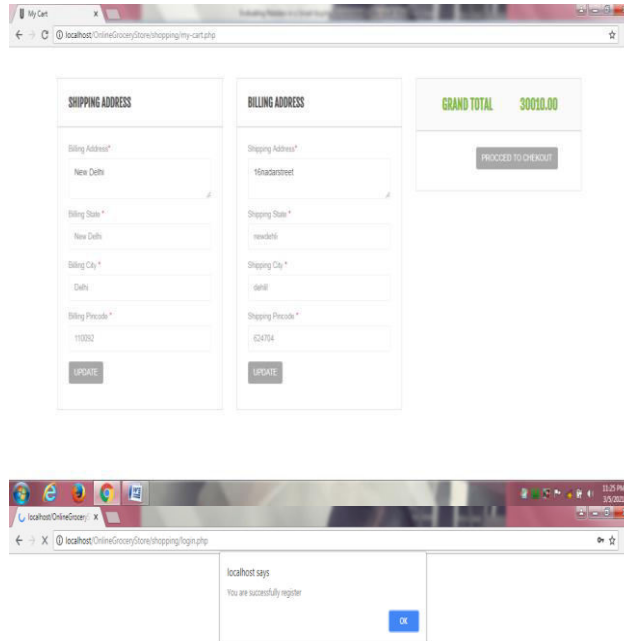


4.1.2 PRODUCTS

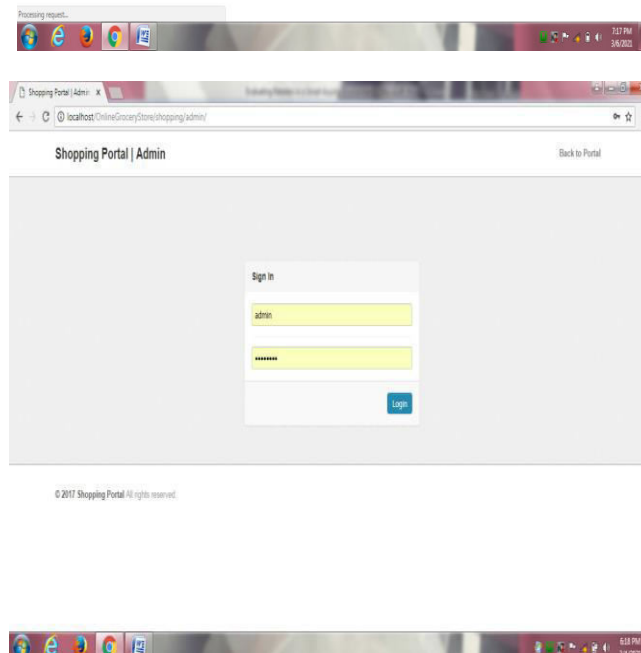




4.1.3 ADD CART

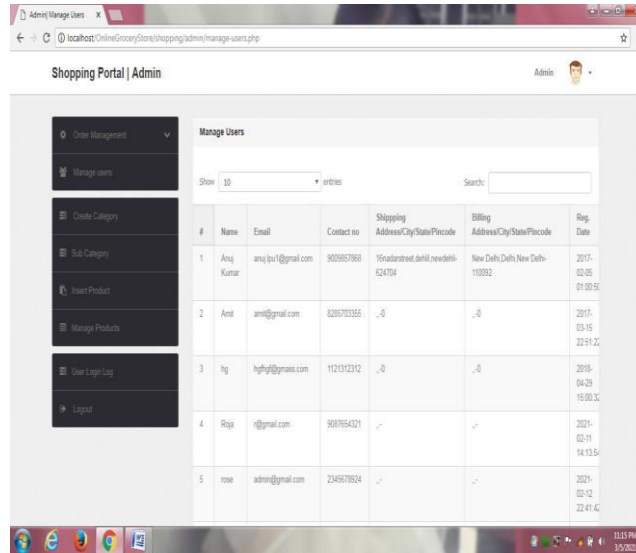


4.1.4 ADMIN LOGIN

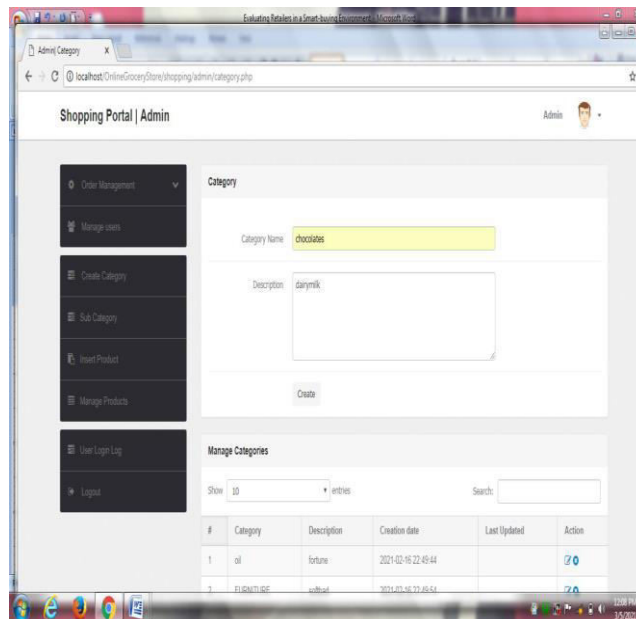




4.1.5 MANAGE USER

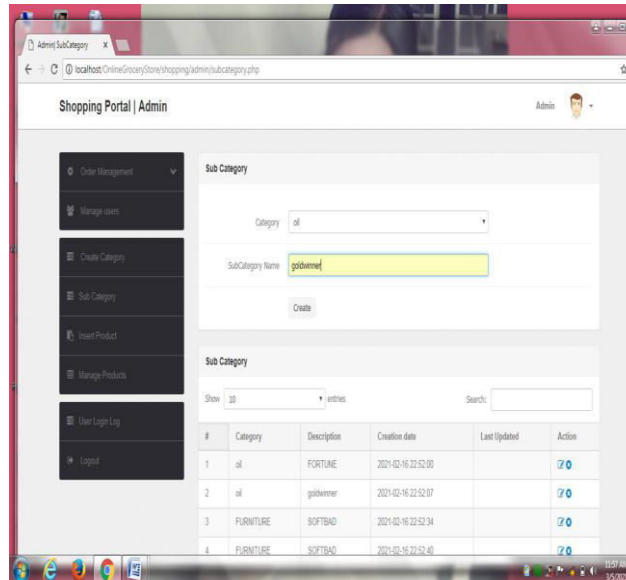


4.1.6 ADMINCATEGORY

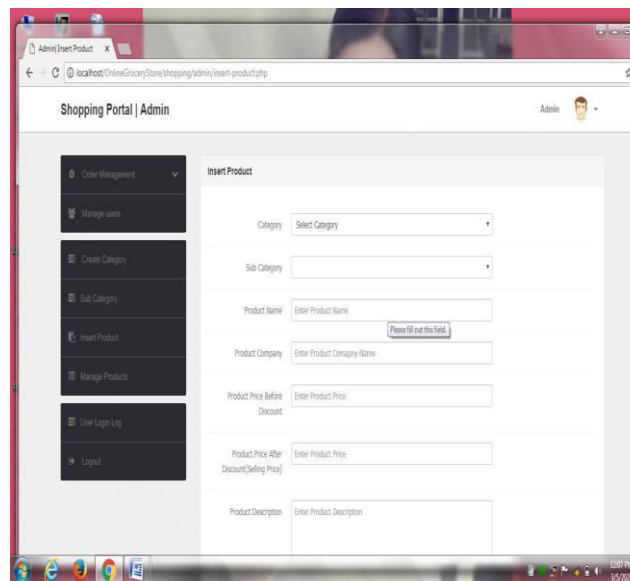




4.1.7 SUBCATEGORY



4.1.8 INSERTPRODUCTS



V. CONCLUSIONS

The study indicated that improvements in the initiate of data the executives as applied to Smart-City and their public and private partners could prompt focalized advancements, on openly characterized information stages and perhaps freely claimed, or unique, with the coming of various stages, either open or private, either integral or serious (Schaffers et al. 2011). For this situation, the development of the Smart-City data stage can reflect such data stages in other advanced regions, for example, home shopping, protection, or media. For those engaged with the advancement, improvement, or conveyance of keen urban communities, the suggestions are self-evident; Do not expect that the centralization approach The successive control received by the Government for the methodology of data the executives including numerous player biological systems would work in a way that is better than a more liberal methodology, permitting yet managing. For conceivable biological system stage suppliers, the primary ramifications identify with the need to zero in on the advantages of all player environments, particularly the individuals who remain to profit most



from the smoothing out of the city, regardless of whether they are associations or people, and to guarantee that the cooperation between all individuals from the environment is set up on a fundamental organization, with the acknowledgment that numerous players need to deliver needs from their own advantages, to zero in on the necessities of brilliant end-clients, whether they are residents or associations. Ideally, this article will give a strong establishment to bring this sort of coordinated effort forward.

VI. FUTURE ENHANCEMENTS

Future enhancement: In the system, thus the developers have few future works suggestion for continuation. Firstly, the development of integration between the system with the supplier system of Rahmath Store. By integrating the both systems, Rahmath Store system can directly send the request of inventory order to the supplier when the stock level is low. Thus, Rahmath Store does need to order manually from the supplier which can cause delay in the delivery of the products. By having this integration, Rahmath Store can practices Just-In-Time inventory where the store does not need to hold many stocks which is not a good practice of inventory control. Secondly, the implementation of decision support functions in the system. For examples, data mining techniques or approach can be used to study the pattern of sales made. From the pattern analysis, Rahmath Store can be used it to do marketing strategies to its customer or even stock arrangement management can be done from the result. All this action is believed to boost the sales of the store greater than the current

REFERENCES

1. Stott, R. N., Stone, M., & Face, J. (2016). Business models in the business-to-business and business-to-consumer worlds—what can each world learn from the other?. *Journal of Business & Industrial Marketing*
2. Townsend, A. M. (2013). *Smart cities: Big data, civic hackers, and the quest for a new utopia*. WW Norton & Company.
3. Wright, L. T., Robin, R., Stone, M., & Aravopoulou, D. E. (2019). Adoption of Big Data technology for innovation in B2B marketing. *Journal of Business-to-Business Marketing*, 26(3-4), 281-293.
4. Yovanof, G. S., & Hazapis, G. N. (2009). An architectural framework and enabling wireless technologies for digital cities & intelligent urban environments. *Wireless personal communications*, 49(3), 445-463.
5. Zook, M. (2017). Crowd-sourcing the smart city: Using big geosocial media metrics in urban governance. *Big Data & Society*, 4(1), 2053951717694384.



INNO  **SPACE**
SJIF Scientific Journal Impact Factor

Impact Factor:
7.512

ISSN INTERNATIONAL
STANDARD
SERIAL
NUMBER
INDIA



INTERNATIONAL JOURNAL OF INNOVATIVE RESEARCH

IN SCIENCE | ENGINEERING | TECHNOLOGY

 **9940 572 462**  **6381 907 438**  **ijirset@gmail.com**



www.ijirset.com

Scan to save the contact details