



e-ISSN: 2319-8753 | p-ISSN: 2320-6710

# IJRSET

International Journal of Innovative Research in  
**SCIENCE | ENGINEERING | TECHNOLOGY**

# INTERNATIONAL JOURNAL OF INNOVATIVE RESEARCH

IN SCIENCE | ENGINEERING | TECHNOLOGY

Volume 10, Issue 5, May 2021

**ISSN** INTERNATIONAL  
STANDARD  
SERIAL  
NUMBER  
INDIA

**Impact Factor: 7.512**

9940 572 462

6381 907 438

[ijirset@gmail.com](mailto:ijirset@gmail.com)

[www.ijirset.com](http://www.ijirset.com)



# Cataract Detection using Digital Image Processing in MATLAB

Motiksha Ghodpage<sup>1</sup>, Rashmi Singh<sup>2</sup>, Harshda Mohadikar<sup>3</sup>, Ravina Waghmare<sup>4</sup>,  
Ashanka Bhandakkar<sup>5</sup>, Dr.R.A.Burange<sup>6</sup>

Student, Dept. of Electronics Engineering, K.D.K.C.E, Nagpur, Maharashtra, India<sup>1, 2, 3, 4, 5</sup>

Professor, Dept. of Electronics Engineering, K.D.K.C.E, Nagpur, Maharashtra, India<sup>6</sup>

**ABSTRACT:** This paper proposes and evaluates an algorithm to automatically detect the eye cataract with the help of digital image processing technique using MATLAB. Currently, methods available for cataract detection are based on the use of either fundus camera or Digital Single-Lens Reflex camera; both are very expensive. The main motive behind this work is to develop an inexpensive, robust and convenient algorithm which is conjugation with suitable devices which will be able to diagnose the presence of cataract. Here we provide a simple innovation idea which can be implemented for common man to detect the eye cataract disease in very affordable way. An algorithm is proposed for cataract screening based on texture features like uniformity, its shape, size, intensity and standard deviation. Retinal vessel segmentation algorithms are a fundamental issue of automated retinal sickness screening structures. This work examines the blood vessel segmentation methodologies in two dimensional retinal pix acquired from a fundus camera and a survey of techniques is offered. This paper reviews, examine and categorize the retinal vessel extraction algorithms, strategies and methodologies, giving a quick description, highlighting the important thing points and the performance measures. We intend to present the reader a framework for the existing research; to introduce the range of retinal vessel segmentation algorithms; to speak about the modern trends and destiny guidelines and summarize the open issues.

**KEYWORDS:** Cataract, Digital Image Processing, Fundus image, Graphical User Interface, Human eye,

## I. INTRODUCTION

In this present arena, people are facing lots of eye health issues among them eye cataract is very commonly occurring disease in the people of age group of 40s or 50s. Today almost every human being knows about Eye Cataract disease. According to research, about 20 million people worldwide are blind due to cataract. Cataract becomes more common with age. Cataract is a kind of eye disease that is a clouding in the lens of the eye that affects vision. According to the World Health Organization (WHO), it is estimated that there is an annual increase in the backlog of people requiring surgery of over 2 million persons newly blind from cataract. About 2.2 billion people around the world are affected by blindness and vision impairments, more than 50% of the blindness is caused by cataract and around 40 million people will be blind by the year 2025[1]. At present cataract are detected by conducting various tests, including Visual Acuity test, Slit Lamp examination and Retinal exam.

People living in rural and remote areas are the most affected by blindness due to inaccessibility to health services and ophthalmologists. For these people digital eye cataract detection system will be very useful and affordable. Therefore, the eye cataract detection system has been a research focus for some time. In the recent years many electronics devices have developed for retinal fundus image capturing and detecting cataract but these devices are reported to be expensive and have poor ability to detect cataract. [1] The entire computer aided cataract detection methods uses retinal, ultrasound or slit lamp images. These systems have increased complexities, and the cost of acquisition module is very high. Therefore there is a need for the development of low cost computer assisted cataract detection technique.

Our iris color differs from person to person. The pupil is circular in shape so we can detect it using circular region detection algorithms for which Hough transform is the most common choice. This paper proposed a cataract detection system based on MATLAB that detect the cataract and non cataract from retinal fundus image. The basic method proposed in this paper for robust cataract detection algorithm can be described in three steps: preprocessing, feature extraction, and decision making.

## II. RELATED WORK

Utilizing Computer-assisted prognosis of retinal fundus image is turning into an alternative to manual inspection of the fundus by using a expert, called direct ophthalmology. Moreover, laptop-assisted prognosis of retinal fundus photos turned into shown to be as dependable as direct ophthalmology and calls for less time to be processed and analyzed. Various eye associated pathologies that can result in blindness, consisting of macular degeneration and diabetic retinopathy are automatically identified with the aid of making use of retinal fundus snap shots. Although several segmentation methods were proposed, this segmentation stays difficult due to variations in retinal vasculature community and photograph quality. Many research have been carried out on detection of eye cataract, some of them are given below

### **Retinal Blood Vessel Segmentation in Fundus Images using Improved Graph Cut Method** by P.R Wankhede-

The extraction of blood vessels is a challenging for disease classification due to their complex and variable anatomic structures in the fundas images. Several methods have been proposed in literature for segmentation of blood vessels from the retinal images. Ophthalmologist uses retinal image features for early detection and possible treatment of retinal diseases.

It is necessary to segment blood vessels automatically from retinal images to avoid manual time consuming processes. In this paper they have presented the extension of graph cut based algorithm for segmentation of blood vessels from retinal images. This method is robust for segmentation of blood vessels. They addressed central light reflection problem associated with retinal images and 'shrinking bias' problem associated with graph cut algorithm. They introduced modified Gaussian filter for removing central light reflection from retinal images. The geometric concept of flux of a given vector field and length/area combined within the global optimization framework of graph cuts. In this paper it is shown that how to integrate flux concept in graph cuts for improving segmentation of long thin blood vessels which helps to remove 'the shrinking bias' problem.

### **Retinal Blood Vessels Semantic Segmentation Method Based on Modified U-Net** by Ling Lou1 –

Automatic segmentation of retinal blood vessels from fundus images plays a key role in the computer aided diagnostic system, which is helpful for the early treatment of many fundus diseases including diabetic retinopathy, glaucoma and hypertension. In this paper a modified U-Net is proposed to train semantic segmentation models for retinal blood vessels.

### **Retinal Image Enhancement Technique for Blood Vessel Segmentation Algorithm** by A. M. R. R. Bandara-

The morphology of blood vessels in retinal fundus images is an important indicator of diseases like glaucoma, hypertension and diabetic retinopathy. The accuracy of retinal blood vessels segmentation affects the quality of retinal image analysis which is used in diagnosis methods in modern ophthalmology. Contrast enhancement is one of the crucial steps in any of retinal blood vessel segmentation approaches. The reliability of the segmentation depends on the consistency of the contrast over the image. This paper presents an assessment of the suitability of a recently invented spatially adaptive contrast enhancement technique for enhancing retinal fundus images for blood vessel segmentation. The enhancement technique was integrated with a variant of Tyler Coye algorithm, which has been improved with Hough line transformation based vessel reconstruction method. The assessment was done by comparing the segmentation performance with five widely used contrast enhancement techniques based on wavelet transform, contrast limited histogram equalization, local normalization, linear un-sharp masking and contour let transform.

### **A Novel Retinal Vessel Extraction Method Based on Dynamic Scales Allocation** by Duüdüü Güü-

Automatic extraction of retinal vessels is significant for diagnosis of eye diseases. Currently, the automatic extraction of the vessels in the retinal images with very low contrast and various widths is a bottleneck. In this paper an effective retinal blood vessel extraction method to detect fine vessels more accurately was presented. The contribution of this work is that a novel dynamic scale allocation scheme of the matched filter was proposed. The whole image is divided into sub-blocks. The histogram of each sub-block is fitted by Gaussian function whose fitting parameters are used to select the scales. Compared with the existing blood vessel extraction using uniform multistage matched filter, the proposed method detects many fine vessels drowned by noise and has good width estimation.

### **Blood Vessel Segmentation using Hessian Matrix for Diabetic Retinopathy Detection** by Anupama. P-

Now a day is diabetes. The diabetic retinopathy (DR) is among one of the diseases lead to sight loss. The blood vessels are representation of retina pathology. Hence, in detection of diabetic retinopathy using image processing blood vessel segmentation is major step. It is challenging task for blood vessel segmentation as they are low contrast and narrow. Improving the blood vessel Segmentation is inspiration of the work. In this paper, Hessian Matrix is the process used for

blood vessel segmentation. Eigen values are calculated based on the Hessian matrix for low Frequency of the FFT of green channel of the retinal image.

### III. PROPOSED WORK

Segmentation and review of retinal vasculature characteristics for example normal or abnormal branching, shading and diameter as well as the optic disk morphology permits eye care experts and ophthalmologists to perform mass vision screening exams for early discovery of retinal ailments and treatment assessment. This could forestall and decrease vision debilitations, age-related diseases, and numerous cardiovascular ailments, and in addition diminish the expense of the screening. In manual assessment, segmentation and estimation accuracy also fluctuates relying upon nature of the retinal images, graders ability and experience. Moreover, manual segmentation and estimation procedures can take up to an hour for assessment of just a single eye. In this way, a completely automated framework extracting the vessel structures in retinal images could surely diminish the workload of eye clinician.

**Step1:** To calculate mean of blood vessels and area of exudates.

**Step2:** To train the SVM classifier using the mean values of the blood vessels and the area of the exudates of the training database.

**Step3:** To classify the images of testing database using Support Vector Machine Classifier into Healthy or Diabetic retinal images.

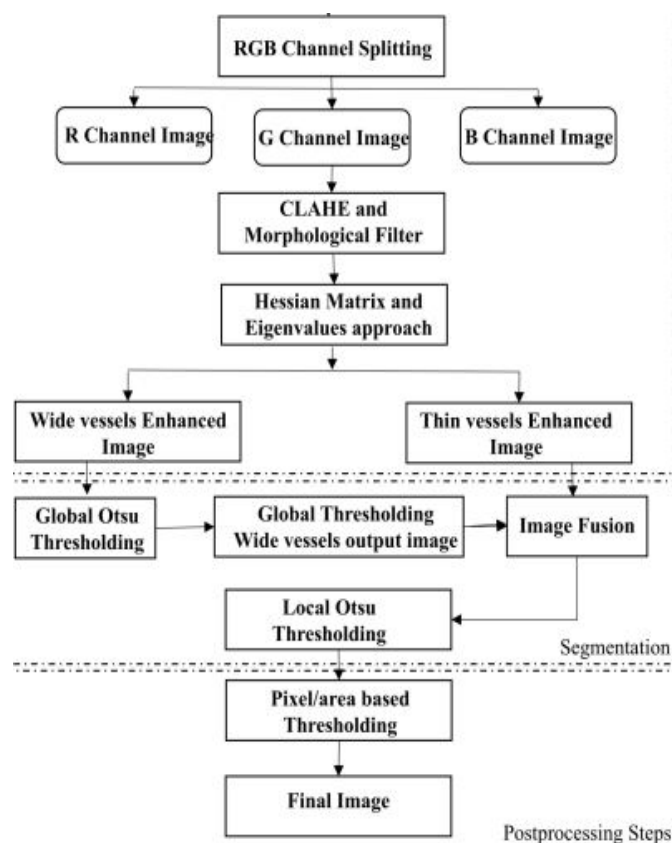
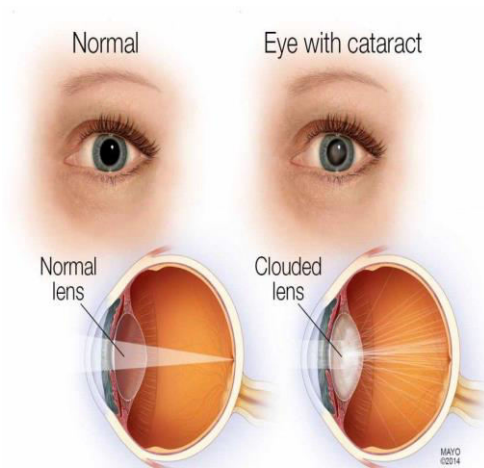


Fig. 1 Proposed System Process Diagram



#### IV. WORKING



**Fig 2. Demonstration of Normal Eye and a cataract Eye**

The first step is capturing of retinal fundus image. Fundus image is captured by a fundus camera. Retinal fundus image documentation that records the appearance of patient's retina. This image allows the Dr. to study a patient's retina, detect retinal changes and review a patient's retinal findings. This fundus image has to be pre processed and preprocessing takes place in four steps.

1. Colour space conversion: This is generally performed for converting an image that is represented in one color space to another color space. In our project RGB (Red Green Blue) color space in the image is converted into HSI (Hue, Saturation, Intensity) space. HIS represents colors similarly how the human eye senses colours.
2. Median filtering: It is used to reduce noise\disturbance present in the image. Basically it reduces 'salt and pepper' noise. This noise is caused by sharp and sudden disturbances in the image signal
3. Contrast Enhancement: It is the process that makes the image features more clearly by making optimal use of the colors available. Contrast limited adaptive histogram equalization is applied in our project. Contrast limited adaptive histogram equalization is used for adjusting image intensities to enhance contrast.
4. Gaussian filtering: Gaussian filtering is done by Gaussian smoothing filter and these are commonly used to reduce noise present in the Image. So for further suppression of noise Gaussian filtering is done.

Feature extraction is carried out it is a process of identification of important features or attributes of the given data or image. The features extracted are blood vessel area, hemorrhage area, bifurcation points, optical distance area, Shannon entropy, micro aneurysms area and exudates area. Quantitative analysis is a broad term that covers a range of techniques that include tasks such as finding shapes, detecting edges, removing noise, counting objects and calculating statistics for texture analysis of an image. Quantitative analysis of the entire feature extracted is then performed. Feature ranking is the process of selecting a subset of relevant features for use in model construction.

#### V. RESULT

This project re presented a texture information based automated algorithm for detection of cataracts from a digital eye image of adult human subjects. Experiments were performed on true color images obtained from a low cost compact digital camera. It was observed that inclusion of standard deviation parameter together with mean intensity and uniformity features added robustness to the decision made by the algorithm which was validated by the ophthalmologist. The proposed method gave very encouraging results with close to 85% accuracy but this needed to be further tested on larger dataset for more accurate detection of a mild or an early stage cataract. The proposed algorithm detects presence of cataract by reading texture information from circular pupil of adult human subjects. It is not tested on child subjects, also it cannot detect cataract in the child subjects with those suffering from coloboma, i.e., the child subjects who have non circular pupils. A GUI has been created in MATLAB for adding simplicity to the operation of proposed system and a network architecture has been proposed for its implementation in telemedicine application. Future work includes fine

tuning of the threshold parameters for cataract detection by considering a large number of patients and corresponding ophthalmologists' decisions. Intelligent computing methods such as SVM or machine learning can be used for improved results. Efforts are being made to remove the flash spot of the camera during preprocessing and evaluate its effect. The algorithm can further be extended for predicting severity information in terms of cataract grading. Different wireless networks will be evaluated for the required quality of service parameter requirements at different layers for the proposed tele-ophthalmology architecture



Fig 3. Captured eye image

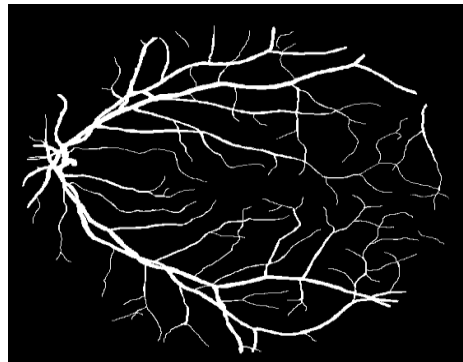


Fig 4. Vessel Segmented Image

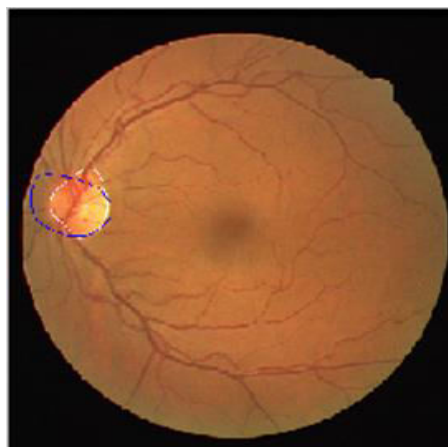


Fig 5. Detected Cataract



## VI. CONCLUSION

The proposed techniques are very effective for the retinal vessels segmentation. In quantitative terms, the method usage of the median ranking has superior overall performance than using the weighted suggest technique. Moreover, it affords costs better than the unsupervised techniques, described on these paintings. This method has better accuracy charge than the supervised techniques for the Stare database and overall performance close to the first-class method for the Drive database. The weighted imply approach the usage of FCM has higher effects in phrases of accuracy than the ORSF approach.

## REFERENCES

1. Md Rajib Hossain, Sadia Afroze, Moshui Hoque, Nazmul Siddique, **Automatic Detection of Eye Cataract using Deep Convolution Neural Networks (DCNNs)** –Conference: 2020 IEEE Region 10 Symposium (TENSYMP) 2020 Nov;2 INSPEC Accession number-20115824.
2. Fraz MM, Remagnino P, Hoppe A, Uyyanonvara B, Rudnicka AR, Owen CG, et al. **Blood Vessel Segmentation Methodologies in Retinal Images—A Survey.** *Computer Methods and Programs in Biomedicine.* 2012 Oct;108(1):407–433. *pmid:22525589*
3. Staal J, Abramoff MD, Niemeijer M, Viergever MA, van Ginneken B. **Ridge-based vessel segmentation in color images of the retina.** *IEEE Transactions on Medical Imaging.* 2004 April;23(4):501–509. *pmid:1508407*
4. Marin D, Aquino A, Gegundez-Arias ME, Bravo JM. **A New Supervised Method for Blood Vessel Segmentation in Retinal Images by Using Gray-Level Based Features.** *IEEE Transactions on Medical and Moment Invariants- Imaging.* 2011 jan;30(1):146 –158. *pmid:20699207*
5. Soares JVB, Leandro JJG, Cesar Júnior RM, Jelinek HF, Cree MJ. **Retinal vessel segmentation using the 2-D Gabor wavelet and supervised classification.** *IEEE Transactions on Medical Imaging.* 2006;25(9):1214–1222. *pmid:16967806*
6. Oliveira WS, Tsang IR, Cavalcanti GDC. **Retinal vessel segmentation using Average of Synthetic Exact Filters and Hessian matrix.** In: *IEEE International Conference on Image Processing; 2012. p. 2017 –2020*
7. Hoover A, Kouznetsova V, Goldbaum M. **Locating blood vessels in retinal images by piecewise threshold probing of a matched filter response.** *IEEE Transactions on Medical Imaging.* 2000; 19:203–210. *pmid:10875704*
8. Zana F, Klein JC. **Segmentation of vessel-like patterns using mathematical morphology and curvature evaluation.** *IEEE Transactions on Image Processing.* 2001 jul; 10(7):1010–1019. *pmid:18249674*
9. Al-Diri B, Hunter A, Steel D. **An Active Contour Model for Segmenting and Measuring Retinal Vessels.** *IEEE Transactions Medical Imaging.* 2009;28(9):1488–1497.
10. Chaudhuri S, Chatterjee S, Katz N, Nelson M, Goldbaum M. **Detection of blood vessels in retinal images using two-dimensional matched filters.** *IEEE Transactions on Medical Imaging.* 1989 sep;8(3):263–269. *pmid:18230524*
11. Bankhead P, Scholfield CN, McGeown JG, Curtis TM. **Fast Retinal Vessel Detection and Measurement Using Wavelets and Edge Location Refinement.** *PLoS ONE.* 2012 03;7(3):e32435. *pmid:22427837*
12. Li Q, You J, Zhang D. **Vessel segmentation and width estimation in retinal images using multiscale production of matched filter responses.** *Expert Systems with Applications.* 2012 Jul; 39(9):7600 –7610.



**INNO**  **SPACE**  
SJIF Scientific Journal Impact Factor

**Impact Factor:  
7.512**

**ISSN** INTERNATIONAL  
STANDARD  
SERIAL  
NUMBER  
**INDIA**



# INTERNATIONAL JOURNAL OF INNOVATIVE RESEARCH

IN SCIENCE | ENGINEERING | TECHNOLOGY

 **9940 572 462**  **6381 907 438**  **ijirset@gmail.com**



[www.ijirset.com](http://www.ijirset.com)

Scan to save the contact details