



e-ISSN: 2319-8753 | p-ISSN: 2320-6710

IJRSET

International Journal of Innovative Research in
SCIENCE | ENGINEERING | TECHNOLOGY

INTERNATIONAL JOURNAL OF INNOVATIVE RESEARCH

IN SCIENCE | ENGINEERING | TECHNOLOGY

Volume 10, Issue 5, May 2021

ISSN INTERNATIONAL
STANDARD
SERIAL
NUMBER
INDIA

Impact Factor: 7.512

9940 572 462

6381 907 438

ijirset@gmail.com

www.ijirset.com

Heartbeat and Temperature Monitoring System for Remote Patients using Arduino

Prof.Hemant S. Kulat¹, Suvarna J.Bhople², Prathmesh P. Thakare³, Prajwal T. Kale⁴, Rupali O. Warade⁵,

Vaishnavi R. Pandit⁶

Assistant Professor, Department of Electrical Engineering, P R Pote college of Engineering and Management,
Amravati, Maharashtra, India¹

Students, Department of Electrical Engineering, P R Pote college of Engineering and Management, Amravati,
Maharashtra,India^{2, 3, 4, 5, 6}

ABSTRACT: Health is one of the global challenges for humanity. In Many countries, there is increasingly growing number of people with chronic diseases due to different risk factors ,thus day by day caretaking demands also increasing . Subsequently health monitoring system acuring a significance these days . We have developed a cost-effective, easy-to-use systems for the sake of elderly healthcare and well being. This praposed system uses a sensors, to track patients health and gives a inform their loved ones in case of any issues . This device are use to collect the temperature , blood pressure , heart beat rate of patients in real time to determining the health condition of the patients. Here an Patients health monitoring system using Aurdino and sensors is proposed to collect a required information. Patients health monitering system gives notification to the patients by using Aurdino and the sensors which are used in designed sysytem to measure heart beat and body temperature of patients which are controlled by microcontroller also suggeste a patient with medical care next step to he followed in case of crtical situation. To transmit a data wire less technique is used. aurdino board collects a data from snesors and transmitte it to the wirless system to the receiving end of disgend module. The data are displayed at the receiving end. This system could be made available at a reasonable cost with great effect.

KEYWORDS: Arduino, Heartbeat Sendors, Health Monitoring System, Temperature Sensor.

I. INTRODUCTION

Health is a fundamental capability humans need to see , feel, and act viably , as it addresses an essential component in the improvement of the person .That is why it is important to give satisfactory approach to manage healthcare by monitoring and medical assistance.

In emergency clinics there are arrangements for constant observing of patients. Their ECGs, heartbeats are constantly observed. There is no arrangement to check these parameters when they get back to home. Also, consequently quite possibly the sickness may return once more. Patient's information (temperature, pulse, ECG, position) will be frequently measured. Time of sending (say each 1 min) can be set.

ordinary internal heat level additionally changes from individual to individual and changes for the duration of the day. The internal heat level is least in the early morning and most elevated in the early evening. The ordinary internal heat level is about 37° C or 98.6 ° F. Be that as it may, it very well may be just about as low as 36.1° C (97°F) in the early morning and as high as 37.2° C (99° F) and still be viewed as ordinary. Subsequently, the typical range for internal heat level is 97 to 100 degrees Fahrenheit or then again 36.1 to 37.8 degrees Celsius. Temperature can be measured by utilizing various kinds of sensors. These sensors come in various structures like thermocouples, thermistors, opposition

temperature locators (RTD), and coordinated circuit (IC) sensors.

Heartbeat and internal heat level are the significant signs that are regularly estimated by doctors after the appearance of a patient. Pulse alludes to how frequently a heart contracts and relaxes in a unit of time (generally each moment). Pulse changes for different age groups. For a human grown-up old enough at least 18 years, an ordinary resting pulse is around 72 beats each moment (bpm). The working of heart can be called as effective on the off chance that it is having lower heart rate when the patient is at rest. Children have a lot higher rate than grown-ups around 120 bpm and more youngsters have pulse around 90 bpm. If the heart pulse is lower than the ordinary pulse, it is an sign of a condition known as bradycardia and if the pulse is higher than the ordinary pulse, it is an sign of a condition known as tachycardia.

The temperature sensor produces simple yield voltage which is relative to the temperature. The temperature sensor required simple to advanced (A/D) converter so that the simple yield voltage can be changed over to advanced structure. The yield of the temperature sensor is associated with the Port An of AT MEGA328R-PU arduino uno. The arduino uno measures this information and presentations it in LCD just as sends it to the receiving end for showing at the far off place. This paper depicts the plan of a minimal effort distant patient observing system which estimates heart rate and internal heat level of a patient and sends the information to a remote end where the information will be shown and doctor or specialist will actually want to analyze him/her. This gadget will be genuinely necessary during crisis period or for saving time of both patient and specialist.

II. LITERAURE REVIEW

- With arising remote methods like Bluetooth and Zigbee innovation ,wearable sensors are utilized for patient checking because of the benefits like versatility ,low power utilization by the system.
- The benefits of this system that are the treatment can be given to the patient in need to the sickness they have comparing with other patients, when in basic circumstance they can be hospitalized.
- These sorts of communication will just work for more limited distance and length. An examination was done to decide the kinds of indispensable signs that are regularly estimated for a patient by specialist.
- The fundamental signs are internal heat level, beat rate and discovery of fall. Body tissues mass- weighted normal temperature and skin temperature are measured.
- Direct temperature measurement of peripheral tissue is more complex than core temperature estimation. Essential signs of patient wellbeing can be observed by biomedical system utilizing zigbee.
- The Design system is two layered, utilized for social affair and handling biomedical signs.
- First the gadget with number of biosensors must be put on the body and second is handling by a local base station using the raw information sent on demand by the cell phone.
- Smart wearable distant wellbeing observing systems are expanded for utilization of great quality in wellbeing administrations also, ease, by staying away from pointless hospitalizations also to ensure a urgent care.
- This System contributes to the enhancement of disease anticipation with practical telemedicine stage. For physiological parameters estimation the Circuit is approached to manage monitoring and analysis of patient health.
- Data from sensors are procured and communicated to worker by the network. Physiological parameters can be prepared and mechanized by framework and showed on the screen.

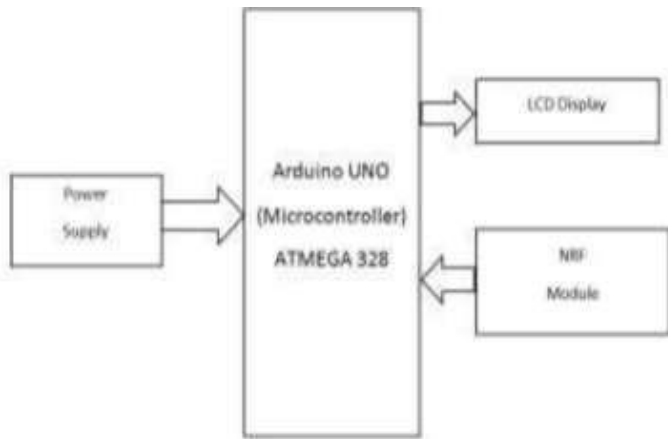


Fig. 2.2: Block diagram of Receiver section

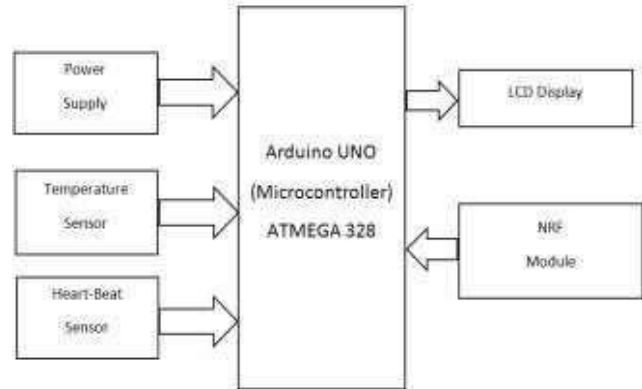


Fig. 2.1: Block diagram of transmitter section

III. PLATFORM INTRODUCTION

A Remote Health Monitoring System comprises of three fundamental segments, for example, information detecting module, data handling module and data communication module. The information detecting module comprises of temperature sensor and heart beat sensor which detects the progressions in the particular physiological parameters. The data is at that point passed on to the PIC microcontroller of information preparing module. The information handling module analyzes the info signals. The noise signal are filtered if the proceed value surpasses than ordinary value , medication which is to be given as an emergency treatment for patient is shown on the PC utilizing GUI. The communications module is utilized to move information among personl and hardware. This has fundamental segments, for example, the message, the sender, the receiver, the medium and the convention by which the message is sent to the specialist through cell phones by information gateway for the treatment to be taken.

IV. WORKING OF SUGGESTED APPROACH

COMPONENTS USED:

- Arduino ATmega328
- Temperature Sensor LM35
- Heart Beat Sensor (LM358)
- nRF24L01 Module
- LCD
- Potentiometer
- Power supply

WORKING:

The point of this proposed approach is to plan an programmed remote health checking system. The objective is to display the temperature and heartbeat of the patient's body which ought to be shown to the specialist utilizing NRF technology. In Hospital's, the monitoring of the patients' health is done by the staff members of hospitals . The temperature and pulse of the patient's body is checked continually and a record of it is kept.

The necessary parts utilized in this system incorporate a power supply, ATmega328 microcontroller, a temperature sensor, a RF TX, a RX module and a LCD show. The ATmega328 microcontroller is utilized as a CPU for observing the temperature of the patient's body. The working of this proposed health monitoring system be explained with block diagram. This block diagram incorporates a power supply block that supply power to the entire circuit, and a temperature sensor is utilized to sense the temperature and heartbeat of a patient's body.

The circuit diagram of the remote health monitoring system primarily incorporates transmitter section and receiver section. In the TX area, the temperature and heart beat sensor is utilized to recognize the temperature and heartbeat of the patient's body and the information which are detected by the sensor is shipped off ATmega328
The sent data can be encoded into sequential information over the air through nRF module and the temperature of the patient's body esteems is shown on the LCD display utilizing a recieving wire toward the finish of a transmitter and the data from the transmitter is transmitted to the receiver end.

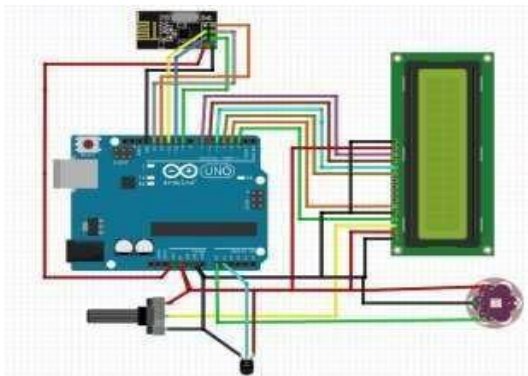


Fig. 4.1: Circuit Diagram of Transmitter section

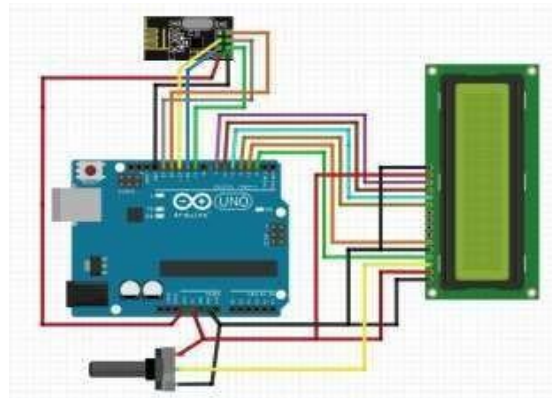


Fig. 4.2: Circuit Diagram of Receiver Section

V. DESIGN FEATURES

The attribute of this project is that the patient is treated at home. And also bridging the gap between the doctor and the patient. Pulse , heart beat, body temperature, ECG, blood pressure measured by using sensor and arduino is the standard and efficient for developing the health monitoring system.

This system design provides better free comfort, immediate treatment and enjoyable living for elderly and ill patients.

Patient checking is appropriate in various circumstances at the point when a patient is in the accompanying conditions:

- In unstable physiological regulatory system – for case, on account of excess of sedation.
- In a dangerous condition – for example, when there is chance of heart attack in a patient.
- In a basic physiological state

Single parameter observing system: This system is utilized for estimating the pulse of a human body, checking ECG, observing SPO2 (oxygen immersion in blood, etc).

Multi parameters checking system. This system module is utilized for checking various basic physiological indications of patients by sending the indispensable data like ECG, breath rate and pulse, and so on. Due to these reasons, multi parameters patient observing frameworks play a critical part in the field of medical devices.

VI. RESULTS

Temperature Measurement

At the point when the power is turned on, all the LEDs on PCBs begins shining, showing that circuit is working appropriately. Here there is a utilization of the mechanical temperature sensor for example LM 35 which gives us room temperature in °C. That temperature is shown on the LCD.

Heartbeat Measurement

There is a pit for estimation of the heartbeat, which comprise of a course of action of LED and LDR. Patients' finger in put among LED and LDR, and the heartbeats are distinguished. The simple voltages are further handled with an operational intensifier LM 358, and this chip has two implicit OPAMPs. Result is shown on the LCD. This gathered information is sent utilizing nRF24L01 module. This information is gotten at the collector area utilizing.



VII. CONCLUSION

By using this system the healthcare professionals can monitor, diagnose, and advice their patients all the time. Heartbeat rate and temperature of patient is estimated .The heartbeat was measured with the help of photodiode and bright LED while the temperature was measured by using precision integrated temperature sensor LM35. The data is transmitted wirelessly and displayed success fully with the help of LCD screen. This disigned module is cost effecient and beneficial for patient health monitoring att nay time.

VIII. FUTURE APPLICATIONS AND DEVELOPMENTS

- The devices can be associated with PC by utilizing serial output so that deliberate heartbeat and temperature can be sent to PC for additional online or offline analysis.
- Warning for abnormalities health conditions can be shown.
- This system also developed by using advanced GSM and GPRS technology in future.
- Sound can be added to the system with the goal that the gadget makes a sound each time a heartbeat is gotten and alert is begun for strange ailment.
- More parameters (like blood pressure) can be added to this module.
- This design module can provided with more than one number so that the more than one person can get a emergency singal or message.
- According to accessibility of sensors or improvement in biomedical pattern more parameters can be sense and screen which will definitely improve the effectiveness of the remote checking framework in biomedical field.

REFERENCES

- [1]Manisha Shelar, Jaykaran Singh, Mukesh Tiwari, “Wireless Patient Health Monitoring System”,International Journal of Computer Applications (0975– 8887) Volume 62– No.6, January 2013.
- [2]Rajalakhshmi.S S.Nikilla, “Real Time Health Monitoring System using Arduino”, South Asian Journal of Engineering and Technology Vol.2, No.18(2016) 52–60 ISSN No: 2454-9614
- [3]C. K. Das, M. W. Alam and M. I. Hoque, “A Wireless Heartbeat And Temperature Monitoring System For Remote Patients”, ICMERE2013-PI-197
- [4]Media Aminian1 and Hamid Reza Naji2, “A Hospital Healthcare Monitoring System Using Wireless Sensor Networks”, Aminian and Naji, J Health Med Inform 2013, 4:2
- [5]Md. Asaduzzaman Miah, Mir Hussain Kabir, Md. Siddiqur Rahman Tanveer and M. A. H. Akhand, “Continuous Heart Rate and Body Temperature Monitoring System using Arduino UNO and Android Device”. International Conference on Electrical Information and Communication Technology Volume 10.1109/EICT.2015.7391943.
- [6]Harshavardhan B.Patil, Prof.V.M.Umale, “Arduino Based Wireless Biomedical Parameter Monitoring System Using Zigbee”, International Journal of Engineering Trends and Technology (IJETT) –Volume 28 Number 7 - October 2015 ISSN: 2231-5381.
- [7]Prof. Y. R. Risodkar. Prof. M. K. Sangole. Amruta.R. Vankhede. Ravi. S. Medhe. Jayashri. K. Shirsat, “Web Based Health Monitoring System”, International Journal of Advanced Research in Electronics and Communication Engineering (IJARECE) Volume 4, Issue 1, January 2015, ISSN:



INNO  **SPACE**
SJIF Scientific Journal Impact Factor

Impact Factor:
7.512

ISSN INTERNATIONAL
STANDARD
SERIAL
NUMBER
INDIA



INTERNATIONAL JOURNAL OF INNOVATIVE RESEARCH

IN SCIENCE | ENGINEERING | TECHNOLOGY

 **9940 572 462**  **6381 907 438**  **ijirset@gmail.com**



www.ijirset.com

Scan to save the contact details