



e-ISSN: 2319-8753 | p-ISSN: 2347-6710

IJIRSET

International Journal of Innovative Research in
SCIENCE | ENGINEERING | TECHNOLOGY

INTERNATIONAL JOURNAL OF INNOVATIVE RESEARCH

IN SCIENCE | ENGINEERING | TECHNOLOGY

Volume 11, Issue 8, August 2022

ISSN INTERNATIONAL
STANDARD
SERIAL
NUMBER
INDIA

Impact Factor: 8.118

 9940 572 462

 6381 907 438

 ijirset@gmail.com

 www.ijirset.com



Investigation of EDM machining parameters for Inconel-625

Saurabh Tiwari ¹, Ripuranjan Singh ²

M. Tech Student, Department of Mechanical Engineering, S.R.Institute of Management & Technology,
Lucknow, India¹

Assistant Professor, Department of Mechanical Engineering, S.R.Institute of Management & Technology,
Lucknow, India²

ABSTRACT: Electro discharge machining is a method for cutting extremely hard metals, complex shapes, and various electroconductive materials. The metal is eliminated by the action of a quick and powerful electric discharge between the tool and the workpiece. The eroded metal from the tool's and the workpiece's surfaces is flushed away by the dielectric fluid. The optimization of the Inconel-625 Electric Discharge Machining process parameters in this work uses the Taguchi technique. Additionally, researchers have looked into how the peak current, pulse on and off times, and flushing pressure affect the reactions of the EDM output. Tool Wear Rate (TWR), Material Removal Rate (MRR), and other investigation-related output results (TWR). Using Brass as a Tool electrode with positive polarity and the three levels of each factor, these tests were run on the Inconel 625 superalloy.

KEYWORDS: Signal-to-noise ratio, Superalloy Inconel 625, tool wear rate, material removal rate, and experimental design.

I. INTRODUCTION

In electrical discharge machining, metal is removed from a workpiece by connecting conductive surfaces with an electric spark. The two primary EDM kinds are sinker or thrust, which is used to create mold or die cavities, and wire, which is used to cut forms like those required for stamping dies. Often comprised of copper or graphite, the electrode used in die dropping is designed to be a positive duplicate of the shape that will be sculpted on or in the workpiece. With the electrode attached to the perpendicular slide, a typical EDM sinker machine resembles a perpendicular milling machine, as diagrammatically depicted in Fig. 1. The slide is moved up and down by an electronic, servo-controlled force unit that regulates the distance between the electrode and the workpiece on the bench. The bench may be adjusted mathematically in three directions to take the workpiece surface to within 0.0005 to 0.030 inches. Sparks are produced everywhere from the electrode surface.

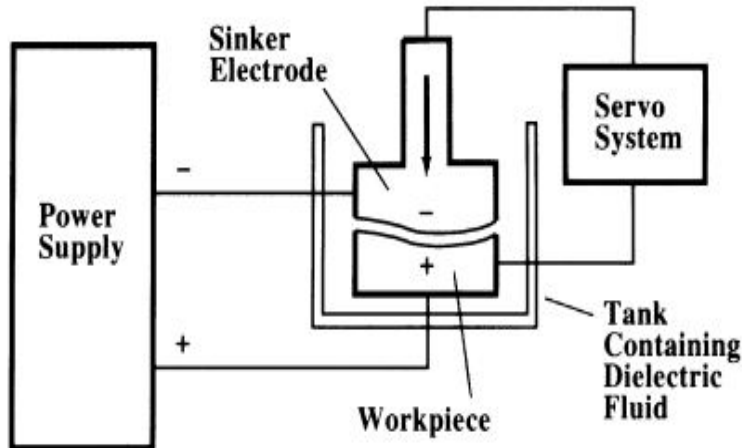


Fig. 1 Sinker or thrust kind EDM Machines are used to drop cavity in mold and die



Fig. 2 Electrical Discharge Machine

Figure 3 shows a diagrammatic representation of wire EDM, which is numerically controlled and resembles a band saw but with the saw blade replaced by a solid brass or copper wire that acts as the electrode. This wire is cut from one roll, guided and tensioned, then wrapped around the workpiece and lower guide rollers from beginning to end, before being coiled onto a different role for storage and ultimate recycling. Under mathematical control, a single guide roller, often the lower, can move on two axes at 90 degrees apart in order of the angle of the wire while a profile with various angles is being formed. Under mathematical control, the bench can also be adjusted in two directions to control where the workpiece is located in relation to about event the cut-out piece from pinching and breaking the wire, it should be possible to see it while it is detached from the workpiece.

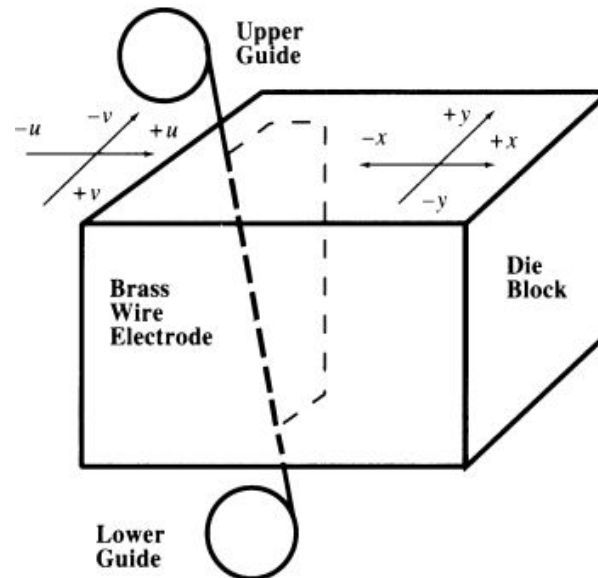


Fig. 3 Wire kind EDM Machines are used to cut stamp dieprofilese.

EDM used on grinding machines is referred to as EDG. An electrode is used in the same way as a graphite wheel, which can be up to 12 inches in diameter and 6 inches wide. The wheel's perimeter is sculpted to fit the profile needed on the workpiece as it passes over it while rotating without coming into contact with it, allowing the wheel's form to be transmitted to the workpiece. To identify carbide tooling, such as form tools, cord chasers, dies, and crush rolls, EDG machines, which are very specialized quently used to produce composite profiles on polycrystalline diamond cutting tools.

II. EDM PROCESS

When using the EDM technique, the spark that forms between the electrode and the workpiece dissipates the energy by mostly melting and vaporizing the material of the workpiece and leaving only a very little amount of the organic material of the electrode behind. The dielectric liquid at the microscopic region where the flash would occur and where the space is insignificant changes into a plasma of hydrogen, carbon, and other oxides as the current begins to flow between the electrode and the work. Between the electrode and the workpiece, the flash can form through this plasma, creating a conduct vessel formed of electrically charged or ionized particles. The flash cannot be prolonged once the current begins to flow, heat up, and evaporate a tiny area, the signal voltage is reached, the voltage drops, and the ionized particle's ground loses power. The manager cuts off the power when the voltage begins to rise once more as a result of the rise in resistance. Remove the tinny residues and cool the impinge zone, this forces the plasma to collapse and generate a low-pressure pulse that sucks in a dielectric liquid. This rotation typically lasts only a few microseconds (millionths of a second, or s), and it is repeated repeatedly at different points on the workpiece as the controlled organism inserts the electrode into the work.

Inconel 625: Inconel mixed metal 626 is a nickel-based super alloy that is the owner of high-power properties and stopping effect to make higher temperatures. It also makes clear by a reasoning strange system of care for trade against slow destruction (by acid) and oxidation. Its power to put up with high weight, special force, and a wide range of temperatures, both in and out of the water, as well as being able to oppose slow destruction (by acid) while being made open to highly acid-like conditions make it making right size good quality for nuclear and marine application. Inconel 625 was blown up in the 1960s by the whole of the final cause of creating an apparatus that could be hand-me-down for steam-line piping. Some modifications were duty bound to the different compositions that have enabled it to be someday more creep-resistant and weldable. Because about, the uses of Inconel 625 have expanded directed toward wide alps of industries a well known as the chemical processing trading, and for pilot and nuclear applications to the way, one sees it pumps and valves and distinctive high brought pressure to bear up on equipment.



III. TERMINOLOGY

Taguchi Methodology:

The cut-and-try trading design method is well known as Taguchi's rule of thumb. Taguchi L9 (34) orthogonal of all sorceress used as the foundation for the experiment's raw materials. In the provided table 2, the level and notation of the number parameter are subject. The 9 rows of the L9 (34) orthogonal array correspond to 9 experimental runs. This option is roughly appropriate to provide the necessary degrees of permission as required for the avant-garde exploration, which is 9 [= 1 + 4 x (3-1)]. In the current study, the tests were run using four input factors: Flushing pressure, Pulse on time, Pulse off time, and Peak current (Ip). The control setting combinations based on the orthogonal array are shown in Table 1. Based on the Taguchi technique, the Signal to Noise (S/N) ratios have been calculated using the following formulae.

$$\eta = -10 \log_{10} \left[\frac{1}{n} \sum_{i=1}^n \frac{1}{y_i^2} \right] \dots\dots\dots(i)$$

$$\eta = -10 \log_{10} \left[\frac{1}{n} \sum_{i=1}^n y_i^2 \right] \dots\dots\dots(ii)$$

In each experiment, yi represents the experimental values, n the number of replications, and is the S/N ratio, which is calculated from the observed values. Eqs. 1 and 2 are used to determine the S/N ratios for "Larger the better" type characteristics and "Smaller the better" type features, respectively. TWR is considered the better problem type in the current study because smaller values of TWR suggest a lower degree of economy and better precision, while MRR is considered the better issue type because a greater MRR indicates a higher level of machine efficiency. The performance responses improve as the S/N ratio increases.

IV. LITERATURE REVIEW

Rodge M.K et. al [2013].

The optimization of the Inconel 625 WEDM process parameters has been studied to be responsive to both the process variables and the work materials. As a result, parameter optimization is crucial for a material's quality machining performance to come from the most cost-effective application of the material. The results of the current experiment showed that pulse-on has a significant impact on kerf width and ranks highly for machining Inconel 625. As the pulse-on increases during the machining of Inconel, the kerf width also increases, leading to relatively less wire wear. With an increase in wire feed, wire wear initially declines noticeably; but, as wire feed is increased further, wire wear increases. This can be because of the interaction of several additional factors. The hardness of machined components varies significantly as a result of pulse-off. The WEDM of Inconel 625 could be guided by optimized process parameters.

Arvind Kumar et. al (2014).

studied the ideal EDM cutting conditions for several workpiece materials using various Cu-W tool electrode compositions. All known sharp and flat cutting factors, including discharge current, voltage, pulse on time, duty cycle, spark gap, and flushing oblige, will be tuned. The conclusion of this study overestimated the effect that completely intimate material machining had on reducing the cycle expectancy and generator wear value created in copper bait casting bait-casting boat casting by EDM, on-the-machining generator composition amendment technology. The use of copper tungsten bait casting bait-casting boat casting might eliminate the instrument wear outflow faults caused by EDM. Cu-w composition by the number into EDM by employing this technique is like robbing a baby die of candy. (70-30%). Cycle anticipation was decreased as a result of the generator's increased wear and tear. Take action to improve production by paying attention to machining costs, under-the-hood wear expenses, and restoring the climb's polish.

N. Radhika et. al [2014]. The Taguchi technique was applied to investigate aluminum hybrid composites in order to optimize the EDM settings. Peak Current, Flushing Pressure and Pulse on Time were chosen as the process parameters for the trialing, whilst MRR, SR, and TWR were employed as the response parameters. On L27 OA, DOE was based. On the Electronic ZNC Small Die Sinker Machine, tests were run. In accordance with the findings, Flushing pressure was the main problem for MRR, Pulse on Time was the most important factor for TWR, and Peak Current was the most important factor for SR.

Manpreet Singh et. al [2014].

Studied Mild Steel investigated the impact of various wire electrodes on the MRR of MS workpieces produced utilizing the WEDM process using Taguchi L9 OA. As input parameters, Material of Wire, Current, and Pulse on Time were chosen, and MRR served as the response parameters. Three alternative wire electrodes with a 0.25mm diameter were used for the studies on an electronic sprint cut WEDM machine. Copper, brass, and brass with a zinc coating were the materials used to make the wire electrode. According to an ANOVA study, the MRR was larger when the workpiece was machined at current 3A and pulse on time 130 s with a copper electrode and lower when it was machined with zinc-coated brass.

Thirupathi. p.

The what under the hood wear worth flaws created by EDM could be eliminated by integrating the copper tungsten bait casting bait-casting boat casting Cu-w (70 percent - 30 percent) composition practice. The generator wear price tag and cycle predate were thereby reduced. Pick up the weakening cycle earlier, machining charge, and appliance wear arm and a leg for the productions in order to restore the climb finish.

V. SCOPE OF THE STUDY

Conduct a literature review to examine how the workpiece will be utilized, the level of accuracy needed during the operation, the material used to make the workpiece, and the tool.

- List the electrode, workpiece, dielectric fluid, pulse ON/OFF period, and current rating materials.
- Using the historical data and the literature review, choose the parameters' levels for this investigation
- Execute DOE with the Taguchi method or another appropriate method for Analysis.
- Establish the input parameters' ideal level of tool wear.
- Execute a test for confirmation.

VI. OBJECTIVES OF THE STUDY

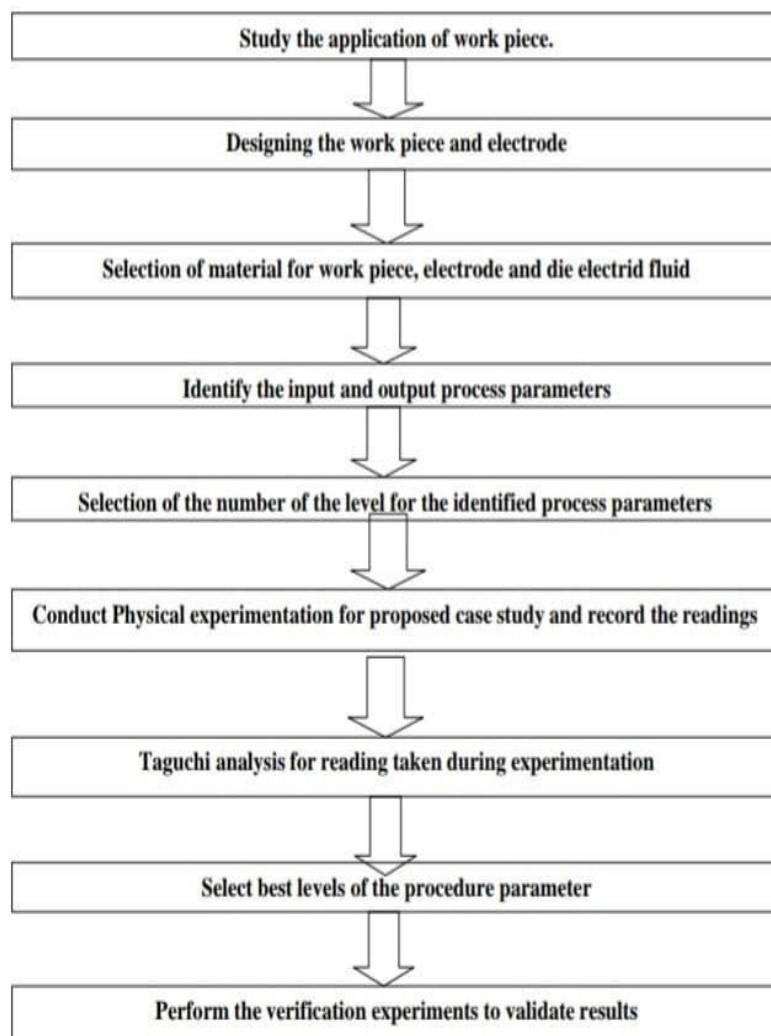
- The predictable machining process was inflated to the material the march to a dissimilar drummer type of reinforcement. other than losing their aggressive rim to non-conventional machining for the reason of unfortunate face end, elevated tool wear, rate, and elevated tooling price.
- To rising the duty percentage of Copper inside have valuable tensile enforcement, electrical conductivity, and reticent conflict.
- The machinability of copper composite by the whole of respect to cost skilled non according to the book machining relish EDM has conclusively be considered.



- Fine particle metallurgy has been an efficient technique of produce copper fusion fabric.
- This act experiments and optimizes the machining parameter of mild encourage and Inconel 625 for the EDM procedure.
- In our experiment tool made up of Brass, the material is used. So increases the manufacturing price, cheap machining price, tool wear rate (TWR) is decreases and better face end of the compound material.

VIII. RESEARCH METHODOLOGY

The research methodology adopted for carrying out the work is shown in the flow chart.



IX. EXPERIMENTAL DETAILS

Die sinking EDM of kind OSCARMAX model S645 CMAX with servo head steady gap voltage positive polarity was the subject of experiments (Fig. 2). As a nonconductor fluid, 30 Grade EDM Oil is frequently used. The Inconel 625 super alloy, which has a B65 HRC hardness, was chosen for analysis. Table 1 provides the chemical make-up of the workpiece material. For a higher MRR and cheaper price, the Brass conductor (93 percent Cu) was employed as a tool electrode. During the experiment, the EDM machining took place for a maximum of 11.59 minutes. The load difference between the workpiece and electrode before and after cutting is measured using a digital weighing balance of the ADGF3000 type (maximum 3100g, d 0.01g, exactitude 0.01g), as shown in fig 5. From the following equations, it is clear that the MRR and TWR are squared.

$$MRR = (W_i - W_f) / T * \rho$$

Weight of the material before machining = W_i

Weight of the material after machining = W_f Time taken for machining = T
 ρ = density of the material.

$$TWR = (W_{tb} - W_{ta}) / T * \rho$$

W_{tb} = Initial weight of the tool

W_{ta} = Final weight of tool after machining Time is taken for machining = T
 ρ = density of the material.



Fig:4 Tool Electrode And Workpiece



Fig:5 Digital weighting Balance Machine



Fig:6 Experimental setup EDM

The by the number parameter be occupied based on the kickoff experiment and machine hired condition and the sub terrestrial outcome of MRR and TWR put into table 3.



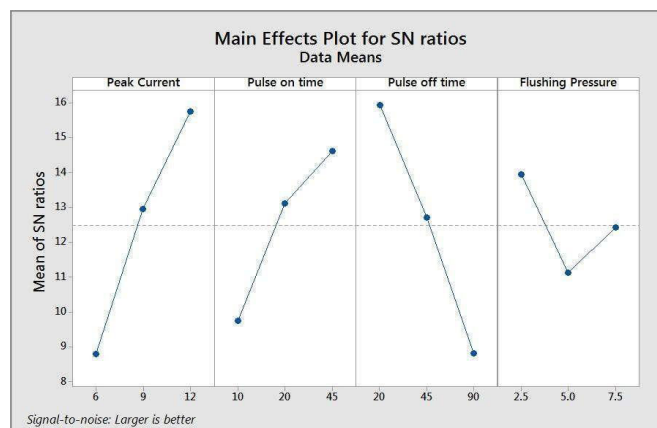
Table 3. Experimental results and S/N ratios

Exp no.	Peak Current (IP)	Pulse on time (µs)	Pulse off time (µs)	Flushing pressure (kg/cm ²)	MRR (mm ³ /min) (Mean)	TWR (mm ³ /min) (Mean)	S/N ratio (MRR)	S/N ratio (TWR)
1	6	10	20	2.5	3.57	1.5	10.9298	-3.573
2	6	20	45	5	2.6	1.3	8.2479	-2.3469
3	6	45	90	7.5	2.3	1.07	7.1685	-0.5900
4	9	10	45	7.5	3.3	0.27	10.3383	11.3371
5	9	20	90	2.5	3.7	0.24	11.3386	12.3508
6	9	45	20	5	7.2	7.5	17.1399	-17.5033
7	12	10	90	5	2.57	0.2	7.9525	13.9147
8	12	20	20	7.5	9.7	5.57	19.7317	-14.9328
9	12	45	45	2.5	9.5	5.5	19.5506	-14.8111

X. RESULTS AND DISCUSSION

Equation 1 and Equation 2 were used, respectively, to compute the signal-to-noise ratio for MRR and TWR, respectively, because MRR has the "bigger the better" characteristic while TWR has the "smaller the better" feature. Table 3 displays the S/N ratio for each therapy. MRR has an average S/N ratio of 12.488 dB, while TWR has an average S/N ratio of -1.794 dB.

Table 4. Signal to Noise Ratios Larger is better for MRR.





Level	Peak Current	Pulse on time	Pulse off time	Flushing Pressure
1	8.782	9.740	15.934	13.940
2	12.939	13.106	12.712	11.113
3	15.745	14.620	8.820	12.413
Delta	6.963	4.879	7.114	2.826
Rank	2	3	1	4

Fig. 7 S/N ratio curve of the procedure parameter for MRR

Tables 4 and 5 show the response tables for the S/N ratios of MRR and TWR, respectively. Figures 7 and 8 respectively exhibit a graphical representation of the four control factors' effects on MRR and TWR. Table 4 shows that Peak Current and Pulse On Time are the key factors in MRR increase, while Pulse Off Time and Flushing Pressure are responsible for MRR decreasing from high to low levels.

Table 5. Signal to Noise Ratios Smaller is better TWR

Level	Peak Current	Pulse on time	Pulse off time	Flushing Pressure
1	-2.170	7.226	-12.003	-2.011
2	2.062	-1.643	-1.940	-1.978
3	-5.276	-10.968	8.559	-1.395
Delta	7.338	18.194	20.562	0.616
Rank	3	2	1	4

Table 5 shows that whereas flushing pressure only marginally raises TWR, pulse on time acts as the primary factor in reducing TWR. As illustrated in Fig. 7, the tool wear rate increases, and the S/N ratio falls as the current value is raised from a low level to a high one. On TWR, the peak current increases from low level to high level while the pulse of time decreases.

The ideal machining parameters for MRR are peaked current at level 3, pulse on time at level 3, pulse off time at level 1, and flushing pressure at level 1. A higher S/N ratio enhances the process response.

Peak current at level 2, pulse off time at level 1, pulse off time at level 3, and tool flushing pressure at level 3 is the optimal machining parameters for TWR.

Table 6. Optimal machining process parameters and experimental results

Response.	Ip(Amp)	Ton(μs)	Toff(μs)	Flushing Pressure(kg/cm ²)	Predicted	Experimental
MRR(mm ³ /min)	12	45	20	2.5	13.7597	9.7
TWR(mm ³ /min)	9	10	90	7.5	0.0809	0.24

XI. CONCLUSION

The analysis using the Taguchi method leads to the following conclusion.

- Peak current increases led to continual MRR rises and TWR increases followed by decreases. As pulse on time grows, MRR rises and TWR constantly falls.
- As pulse off time grows, MRR decreases, and TWR steadily rises.
- Growth of After a set amount of time, flushing pressure causes MRR to initially fall, then increase, and TWR to gradually increase.
- The flushing pressure of 7.5 kg/cm², the peak current of 12 amps, the pulse on time of 20 s, and the pulse off time of 20 s are optional conditions for the maximum metal removal rate.
- Peak current of 12 Amp, pulse on time of 10 sec, pulse off time of 90 sec, and flushing pressure of 5 kg/cm² are the optional requirements for the lowest Tool wear rate.
- Peak current of 12 Amp, pulse on time of 10 sec, pulse off time of 90 sec, and flushing pressure of 5 kg/cm² are the optional requirements for minimal Tool wear rate.
- The results of the confirmation test show that the trial value is superior to the predicted value, and it has been proven that the Taguchi Technique is an efficient method for providing a better solution for single objective optimization issues.

REFERENCES

- [1] "Investigation on Process Response and Parameters in Wire Electrical Discharge Machining of Inconel 625," M.K. Rodge, S.S. Sarpate, and S.B. Sharma, IJMET, Vol. 4, Issue 4, pp. 54-65, 2013.
- [2] "Optimization of EDM Process of (Cu-W) EDM Electrodes on Different Progression," Journal of Engineering Research and Applications, ISSN: 2248-9622, Vol. 4, Issue 11(Part-1), November 2014, pp. 91-95
- [3] "Optimization of Electrical Discharge Machining Parameters of Aluminium Hybrid Composites Using Taguchi Method," N. Radhika, A. R. Sudhamshu, and G. Kishore Chandran, Journal of Engineering Science and Technology, Vol. 9, No. 4, pp. 502-512, 2014.
- [4] Manpreet Singh, Amandeep Singh Bansal, and Sanjeev Kumar, "The Effect of Different Wire Electrodes on the MRR of MS Work piece Using WEDM Process," IJMET, Vol. 5, No. 5, pp. 180-188, 2014.
- [5] "Optimization and Analyses Of Cu-W Tool EDM Process Using Composite Materials," Thirupathi. p. The IOSR Journal of Mechanical and Civil Engineering (IOSRJMCEe- ISSN 2278-1684, p-ISSN 2320-334X, pp. 36-42) is a publication.
- [6] "Optimization of Machining Parameters in EDM of CFRP Composite Using Taguchi Technique," IJMET, Vol. 5, Issue. 10, pp. 70-77, 2014. Brajesh Kumar Lodhi, Deepak Verma, and Rahul Shukla
- [7] "Experimental investigation and multi-objective optimization of wire electrical discharge machining (WEDM) of 5083 aluminum alloy," Trans. Nonferrous Met. Soc.China 24 373_379, by G. Selvakumar, G. Sornalatha, S. Sarkar, and S. Mitra (2014).
- [8] "Optimization of EDM Process parameters using Taguchi approach," by Harmanpreet, Manpreet Singh, and Bipendee. The fourth issue of the International Journal of Engineering Research and Technology, April 2015, pages. 625-634.
- [9] "Optimization of wire EDM machining Inconel 800 utilizing grey relation analysis," by Prasenjit Dutta, Bikash Choudhury, and Payel Deb IRF International Conference Proceedings, 2nd August 2015, pp. 17-21.



INNO SPACE
SJIF Scientific Journal Impact Factor
Impact Factor: 8.118



ISSN INTERNATIONAL
STANDARD
SERIAL
NUMBER
INDIA



INTERNATIONAL JOURNAL OF INNOVATIVE RESEARCH

IN SCIENCE | ENGINEERING | TECHNOLOGY

 **9940 572 462**  **6381 907 438**  **ijirset@gmail.com**



www.ijirset.com

Scan to save the contact details