



e-ISSN: 2319-8753 | p-ISSN: 2347-6710

IJRSET

International Journal of Innovative Research in
SCIENCE | ENGINEERING | TECHNOLOGY

INTERNATIONAL JOURNAL OF INNOVATIVE RESEARCH

IN SCIENCE | ENGINEERING | TECHNOLOGY

Volume 11, Issue 12, December 2022

ISSN INTERNATIONAL
STANDARD
SERIAL
NUMBER
INDIA

Impact Factor: 8.118

 9940 572 462

 6381 907 438

 ijirset@gmail.com

 www.ijirset.com

Simulation in MATLAB using Hybrid Algorithm for Blood Cell Analysis, RBC & WBC Detection

Ms.Nidhi Singh¹, Mr. Gajendra Shrimal²

Assistant Professor, Department of Computer Science and Engineering, Rajdhani Engineering College, Jaipur, India¹

Assistant Professor, Department of Computer Science and Engineering, Jagannath University, Jaipur, India²

ABSTRACT : Identification and analysis of a sickness, at the fitting early stage and time is significant to spare is in the field of pharmaceutical. The time in separate as crisis cased for non-computerized tests, for example, blood tests can stack a huge increment in death rates. As imaging procedures are broadly utilized as a part of the field of medicinal sciences for the location of different ailments, arrangement of popular tumors, and so on. In addition to this, the current framework utilized by pathologists for the ID and arrangement of blood parameters is costly and tiresome. As the fundamental power incorporated into non-changed celebrations is high, they have a tendency to be expensive and are unreasonable for a normal patient. Consequently, in this postulation we propose a novel picture preparing system that can be robotized by distinguishing the blood parameters, for example, red platelet tally, white platelet tally and different parameters with accuracy contrasted with other existing methods. The white platelet check, two calculations we utilize each and its weighted normal as per the client's execution is dealt with as definite outcome. Red platelet number is accomplished by Hough's roundabout change and fragmented red platelet tally. So also, the white platelet check is accomplished utilizing the k-media pool and the sectioned blood number in the blue station with the territory reaction. The proposed system additionally enables isolate to platelets into various classifications.

KEYWORDS:-RBC Count, WBC Count, Circular Through Transforms, K-Means Clustering, Image Processing.

I.INTRODUCTION

The measure of WBC and RBC Cells are needed firstly to analyze various diseases. Diseases like anaemia, leukaemia etc. can be easily diagnosed by calculation of WBC and RBC. Healthcare industries are focusing on the way to generate report of blood cell count in fast and cost-efficient manner. Conventional method of manual measurement of RBC under a microscope do not yields correct results, consumes large time and very expensive. In market, there are numerous systems offered for the automatic quantification of blood cells. These systems allow counting the number of different types of cells within the blood smear slide. The main objective of this research is to produce a survey on computer system by using image processing algorithms to detect and estimate the number of RBC and WBC in the Red blood sample image.

In this dissertation, image processing Hybrid algorithms are used for counting of RBC and WBC with the help of Mat lab. Image processing algorithms involve two methods for WBC and two methods for RBC. RBC and WBC were counted by two accurate method and whose accuracy percentage of both two methods were increased and average value were taken .Value of RBC weaightage and WBC weaightage were subtracted from their manual counts and after that average value of RBC and WBC found

II.LITERATURE SURVEY

Presently days in therapeutic field for human social insurance such a large number of new advances have come up. As Blood is one of the critical parts of person to be alive so it is important to consider in insights about the blood. Deciding blood amass is a fundamental before controlling a blood transfusion in crisis circumstances. Blood is a connective tissue comprising of cells suspended in plasma. Blood's real capacities are to transport different specialists, for example, oxygen, carbon dioxide, supplements, squanders, and hormones. Platelets are made out of erythrocytes (red platelets, RBCs), leukocytes (white platelets, WBCs) and thrombocytes (platelets). The estimation of RBC's, WBC's assumes a critical part in medicinal determination and obsessive investigation. Computerization assumes a fundamental part in every single therapeutic application. Directly, the blood amass examination and platelet assurance is done by the

specialists in the research facilities. The proposed thought to distinguishing the blood gathering and checking the platelets will supplant the manual work in clinical labs. This work plans to build up a programmed framework to play out these tests in a brief timeframe in a crisis circumstance. As the such a large number of Image handling strategies are accessible for blood bunch discovery and platelet extraction. In blood amass assurance strategy, the picture caught from the slide test is utilized to recognize the event of agglutination. The characterization calculation will be utilized to decide the blood gathering. This data will be put away in a database. Alongside that the arrangement of platelet assurance blood picture taken from blood spread magnifying lens. The piece of blood picture comprises of red platelets, white platelets and sickle red platelets. In this technique a picture preparing is done to extraction of single platelet and handling on it. Each single platelet is investigated by utilizing a neural system. Including of RBC's WBC's a blood test gives the pathologist significant data with respect to different ailments. [1]

Finish Blood Count (CBC) is an imperative and essential blood test that is required by numerous doctors to get a general view about patients with numerous sicknesses. The blood examination can show numerous illnesses, for example, tumor, HIV/AIDS, diabetes, pallor, and coronary illness which are mainstream sicknesses. Probably the manual tiny assessment is fundamental when there a suspicious irregularity found in the blood spread. The CBC gives a measure of the grouping of the Red Blood Cells (RBC), White Blood Cells (WBC), and platelets. In any case, the manual infinitesimal review is tedious and requires specialized information. Robotized strategies to give these checking which are required to encourage this procedure and to diminish the work stack on researchers and lab specialists. A standout amongst the most huge advantages of the mechanization of visual specimen examination is to help pathologists to perceive anomalies in blood tests capability, precisely, and quicker. There are five fundamental procedures making the mechanization which are: picture procurement, picture preprocessing, picture division, picture post-preparing, and picture examination. Platelets division is utilized for the discovery and arrangement of the Sickle Cell Anemia. Then again, WBC division is an essential for the identification of Leukemia in human blood tests as Leukemia's fundamental indication is WBC with monster cores. Leukemia is a tumor that starts in the bone marrow and can be dealt with when it is identified in its initial stages. Computerized picture handling turns out to be more huge in biomedical conclusion and social insurance because of the expanding utilization of it in restorative diagnostics. Picture division is among of the picture preparing strategies that has been, yet still a significant zone in advanced picture handling because of its broad use and applications. Picture division is an intricate procedure which is usually utilized for pictures division in therapeutic examination. The objective of picture division is to parcel of a picture into an arrangement of picture areas, which is comparing to specific properties or attributes, for protest recognizable proof, grouping and preparing. Picture division can be sorted into two sorts, regulated and unsupervised. Basically in hematologists' lab, the most well-known technique for assessing the adequacy of a division strategy is a human supervision and examination with the sectioned outcomes for particular division calculations. In any case, this procedure is a monotonous and characteristically confines the profundity of assessment to a moderately modest number of division examinations over a foreordained arrangement of pictures. An unsupervised technique gives more powerful and exact consequences of the portioned pictures. This technique are completely mechanized and utilizes diverse sort of robotized calculation, for example, area or limit based, edge based and thresholding. It has turned into an awesome consideration for clinical scientist particularly for hematologist to dissect the human blood and order the range of intrigue, for example, surface, shape or color.[2]

III.METHODOLOGY

- WBC Extraction Using Contrast Variance & Area Condition Firstly, it is required to read the image to Gray Scale which could finally be converted to gray scale image. This is done using Ostu's method. Henceforth, linear contrast stretching on to the gray scale image has been done using IM adjust function. This is followed by histogram equalization. This is done by combining IM adjusted and Histogram equalized image to obtain background brightening. Image subtraction of background brightened and histogram equalized image has been done to highlight the component. The component of non- interest has been removed by addition of background brightened image and highlighted component image. A unity matrix of 3*3 is obtained using 2D- order statistic filtering technique. Binaries filtered image is obtained using OSTU's method. The image compliment technique is used to obtain the binary compliment of the binary image. The image morphology has been done using structural element disc of radius 9 pixels. The component analysis has been done to count number of objects in binary compliment image and remove objects from list whose area is less than 5000 pixels. The object counts number of WBC's. Finally there is a WBC image on the display.
- RBC Count Estimate Using Circular Hough Transform Read image of stained blood cell slide an extract red dimension of the image using matrix operation. Adaptive histogram equalization of red dimension image has

been performed. Circular Hough Transform of forggers has been applied to equalize image using parameters of radius size from 5 to 25 pixels gradient magnitude threshold 20, local maximal filter radius 13 and multi red to 1(lowest tolerance).The number of circles detected have been counted that estimates theRBC count.

- RBC Count Using Green Channel Blob Analysis Read image of stained blood cell slide and convertcolor space from RGB to HSV. 2-D medium filter on each component of HSV colors space image i.e. Hue saturation & value filter neighborhood selected in 5*5 has been applied.In addition to this, 2-D medium filter on each component of RGS colors space image i.e. red , green , blue components filter neighbor hood selected in 5*5 has been applied.OSTU’s method has been used to extract green channel from RGB image why operation in lg 1 compute gray threshold of green channel image.Binary image has been obtained using $E=(lg1<T*255*0.95)$.Holes in binary image have been filled using morphology function Imfill with holes parameters.Connected component labeling has been used to count total number of objects in binary image the number of blobs found estimates the RBC count.
- WBC Count Using K-Means Clustering & Connected Component Labeling Read image of stained blood cell slide and convert RGB image to Lab colour space. Lab image number of Row’s*number of Columns 2 has been reshaped. K-Mean clustering has been applied on reshaped image matrix using no. of cluster= 3 & the cluster ID’s have been obtained.Obtained cluster ID’s have been reshaped into number of Row 5*number of columns.Remapping of RGB label to original RGB image has been done and 3 segmented image has been obtained.Average Red, Green & Blue component of 3 cluster image has been computed. This is followed by computing Blue content percentage of 3 cluster image.The one having maximum Blue percentage is selected for further processing.The selected cluster image has been converted to binary image using OSTU’s method.The holes in the Binarised image have been filled.The objects having area less than 300 pixels have been removed.The connected components have been labeled as well as the number of objects has been counted.The number of objects corresponds to number of WBC’s

IV.RESULT

As depicted in above table 1, RGB average values for there K-means clusters have been consolidated for image 1 to image 5. Also Bwc percentage of the clusters, and the selected WBC has been identified.



Fig.4.1: Input Image of Blood Cell Stain Image 1

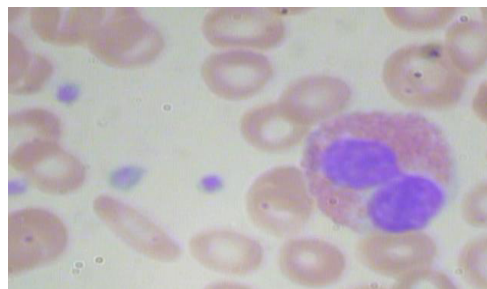


Fig.4.2: Input Image of Blood Cell Stain Image 2



Fig.4.3: Input Image of Blood Cell Stain Image 3



Fig.4.4: Input Image of Blood Cell Stain Image 4

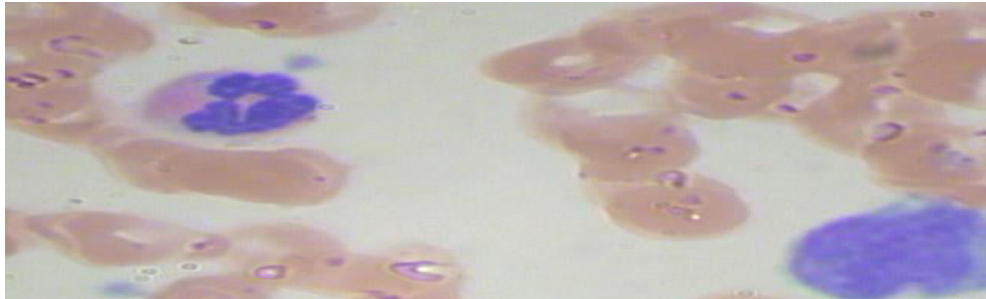


Fig.4.5: Input Image of Blood Cell Stain Image 5

Table 1

S . N	Image	Ravg1	Gavg1	Bavg1	B%1	Ravg2	Gavg2	Bavg2	B%2	Ravg3	Gavg3	Bavg3	B%3	Cluster Select
1	Image 1	73.4876	63.5437	65.3303	32.2834	7.8286	6.8946	11.5772	44.019	106.8845	108.200	107.830	33.3928	2
2	Image 2	141.400	139.1018	136.159	32.678	36.850	32.676	36.711	34.556	7.130	5.162	10.372	45.762	3
3	Image 3	53.262	46.489	53.097	34.738	128.089	125.329	123.415	32.750	7.281	5.075	10.551	46.06	3
4	Image 4	69.922	61.206	69.254	34.561	111.961	108.923	106.058	32.4439	5.796	3.923	9.0081	48.100	3
5	Image 5	78.499	66.555	63.757	30.533	98.867	98.528	95.721	32.656	10.089	9.160	15.498	44.601	3

And table 12 is depicted RBC count estimate using method 1, RBC count method 2, their method weight and their weighted average and WBC count estimate using method 1, WBC count estimate using method 2, their method weighted along with their weighted average is consolidated for image 1 to image 5

Table 2

S. N	Image	RBCM1	RBCM2	RBCW1	RBCW2	RBCWA	WBCEM1	WBCEM2	WBCMW1	WBCMW2	WBCEWA
1	Image 1	15	9	35	65	11.100	1	1	45	55	2.650
2	Image 2	15	24	35	65	20.85	1	1	45	55	1
3	Image 3	4	24	35	65	17	1	1	45	55	1
4	Image 4	23	30	35	65	27.55	1	1	45	55	1
5	Image 5	15	11	35	65	12.400	2	2	45	55	2

In the table3 depicted in above RBC weighted average method, WBC count weighted average method, RBC manual count, WBC manual count method, find ΔRBC value and ΔWBC value than took sum of ΔRBC value and ΔWBC value.



Table 3

S.N	Image Name	RBCWA	WBCWA	RBCMC	WBCMC	ΔRBC	ΔWBC
1.	Image 1	11.10	2.65	18	2	6.91	-0.66
2.	Image 2	20.85	1	18	2	-2.85	1
3.	Image 3	17	1	14	3	-3.00	2
4.	Image 4	27.55	1	22	1	-5.55	0
5.	Image 5	12.40	2	11	1	-1.40	-1
						Σ=-5.91	Σ=1.34

Then we find average value of ΔRBC

$$\sum \Delta RBC / 5 = 1.182$$

and average value of ΔWBC

$$\sum \Delta WBC / 5 = 0.268$$

V.CONCLUSION

In this work an ingenious strategy has been proposed for a totally programmed examination of platelet parameters from tiny blood slides. In this manner our work accommodates programmed blood parameter examination support to medicinal imagination. The outcomes offered demonstrate that the proposed strategy can tally the quantity of RBC's and WBC's in a vigorous and dependable way. Likewise it can isolate WBC core with charge capable exactness. Weighted averaging framework utilized to appoint weighted to the two deviation calculations while averaging, for their enhances the exactness of the framework. Subsequently the proposed framework is a profoundly strong, ease and efficient medicinal symptomatic setup. In this method we established ΔRBC normal esteem surmised 1.182 and ΔWBC normal esteem inexact 0.268. These qualities are right as with my perspective.

REFERENCES

- [1]. MausumiMaitra, Rahul Kumar Gupta, Manali Mukherjee, September 2012 “Detection and Counting of Red Blood Cells in blood cell images using Hough Transform” International Journal of Computer Applications (0975 – 8887) Volume 53– no.16.
- [2]. Ana Ferraz, FilomenaSoares, 2013 “A Prototype for Blood Typing Based on Image Processing,”The Fourth International Conference on Sensor Device Technologies and Applications, Copyright (c) IARIA.
- [3]. LeyzaBaldoDorini, Rodrigo Minetto, NeucimarJeronimoLeite, 2013 “Semiautomatic white blood cell segmentation based on multiscale analysis”, IEEE, Journal On Biomedical And Health Informatics, Vol. 17, No. 1, pp. 250-256
- [4]. M.MumthajBegam,R. Geetha,A. Sagayaselvara, April 2015 “Red Blood Cell Identification Using Watershed Technique” International Journal for Research in Applied Science & Engineering Technology (IJRASET),Volume 3 Issue IV.
- [5]. Farah h. a. Jabar, Waidahismail , Rosalina A.Salam , Rosline Hassan, 10th june 2015 “Image Segmentation using a hybrid clustering technique and mean shift for automated detection acute leukaemia blood cells images” , journal of theoretical and applied information technology, Vol.76. no.1.
- [6]. Yan li,Rui Zhu, Lei Mi, Yihui Cao and Di Yao, 2016 “Segmentation of white blood cell from acute lymphoblastic leukemia images using dual-threshold method” Hindawi publishing Corporation Computational and Mathematical Methods in medicine, Volume 2016, Article Id 9514707, 12 pages.



INNO SPACE
SJIF Scientific Journal Impact Factor
Impact Factor: 8.118



ISSN INTERNATIONAL
STANDARD
SERIAL
NUMBER
INDIA



INTERNATIONAL JOURNAL OF INNOVATIVE RESEARCH

IN SCIENCE | ENGINEERING | TECHNOLOGY

 **9940 572 462**  **6381 907 438**  **ijirset@gmail.com**



www.ijirset.com

Scan to save the contact details