



e-ISSN: 2319-8753 | p-ISSN: 2347-6710

# IJRSET

International Journal of Innovative Research in  
**SCIENCE | ENGINEERING | TECHNOLOGY**

# INTERNATIONAL JOURNAL OF INNOVATIVE RESEARCH

IN SCIENCE | ENGINEERING | TECHNOLOGY

Volume 11, Issue 12, December 2022

**ISSN** INTERNATIONAL  
STANDARD  
SERIAL  
NUMBER  
INDIA

Impact Factor: 8.118

 9940 572 462

 6381 907 438

 [ijirset@gmail.com](mailto:ijirset@gmail.com)

 [www.ijirset.com](http://www.ijirset.com)



# Retinal Vessel Detection

Darshan Gaikwad<sup>1</sup>, Jayesh Dambale<sup>2</sup>, Himanshu Dhole<sup>3</sup>, Vaishnavi Dalvi<sup>4</sup>, Madhavi Kulkarni<sup>5</sup>

U.G. Students, Department of Computer Engineering, JSPM's Bhivrabai Sawant Institute of Technology and Research,  
Wagholi, Pune, Maharashtra, India<sup>1,2,3,4</sup>

Associate Professor, Department of Computer Engineering, JSPM's Bhivrabai Sawant Institute of Technology and  
Research, Wagholi, Pune, Maharashtra, India<sup>5</sup>

**ABSTRACT:** Vascular structures in the retina contain important information for the detection and analysis of ocular diseases, including age-related macular degeneration, diabetic retinopathy, and glaucoma. Commonly used modalities in the diagnosis of these diseases are fundus photography, scanning laser ophthalmoscope (SLO), and fluorescein angiography (FA). Typically, retinal vessel segmentation is carried out either manually or interactively, which makes it time-consuming and prone to human errors. In this research, we propose a new multi-modal framework for vessel segmentation called ELEMENT (vessel segmentation using Machine learning and connectivity). This framework consists of feature extraction and pixel-based classification using region growing and machine learning. The proposed features capture complementary evidence based on grey level and vessel connectivity properties. The latter information is seamlessly propagated through the pixels at the classification phase. ELEMENT reduces inconsistencies and speeds up the segmentation throughput. We analyze and compare the performance of the proposed approach against state-of-the-art vessel segmentation algorithms in three major groups of experiments, for each of the ocular modalities.

**KEYWORDS:** Multi-Model Framework, Machine Learning, Classification, Segmentation, Algorithms, Framework.

## I. INTRODUCTION

Imaging of retinal structures, specifically the vascular network, is a very complex task for a variety of reasons. In the case of healthy individuals, a multitude of factors, including uneven illumination, the optics of the eye itself interfering with the imaging process, the presence of often multi-layered structures (e.g., macula, fovea, etc), and the very nature of vessels, hinder the development of automated retinal vessel segmentation methods. The task becomes even harder in the presence of retinal pathologies, e.g., exudates and hemorrhages. The magnitude of the technical challenge, it is not surprising that there has been a large number of works in the field. In this research, we capitalize on a broad, yet characteristic, set of grey-level and connectivity features and the adaptive nature of machine learning to alleviate ambiguities in identifying retinal vasculature. Indeed, regional image characteristics such as varying contrast and noise may be mitigated by an automated approach. Moreover, vessel narrowings due to the geometric properties of the vasculature or stenoses, and the presence of exudates due to diabetes can be efficiently identified with the aid of machine learning. This work builds upon principles from image processing and machine learning to propose a novel framework, i.e., ELEMENT, for multi-modal vessel segmentation. The first contribution of this research is the use of connectivity features in conjunction with region growing to identify potential vessel pixels. Next, a complementary set of features for each pixel is proposed, which combines connectivity, and grey-level formation, i.e., Hessian, Laplacian, Intensity, Anisotropic Diffusion, and Mathematical Morphology-based. Finally, classifiers from the Weka framework [4] are evaluated in terms of their ability to learn a suitable predictive model for the segmentation of retinal vasculature. The performance of the proposed approach is evaluated on three types of vessel modalities, namely, Fundus Photography, Scanning Laser Ophthalmoscope, and, Fluorescein.

## II. RELATED WORK

1. **Paper name:** A novel on 2 D Modelling for Width Measurement from Retinal Vessel.

**Author:** Dr.N. SATHISHKUMAR, Dr.C.ANNAP ALAGA.

**Abstract:** Now a day the diseases such as arteriosclerosis, Diabetes Mellitus and Hypertension are identified by the diameter of the retinal vessel. Some important changes in the vessel diameter of the retina make the sign of all the above-mentioned diseases. The perfect measurements obtained from the vascular width of the retinal vessel image

make the critical as well as demanding process taking place in the retina which is an automated vessel image. Any changes in the retinal vessel image took place by using the width in 2D modeling to identify the affected area in the vessel image and it demanded the critical portion in the form of the automated image taken from the retina. The pixel values are taken from the retinal image of the typical vessels to make the analysis report which includes all the affected particles. This novel deals with an algorithm that measures the width of the retinal vessel in 2D analysis by using pixels in the form of sub-pixel accuracy. The intensity of the retinal vessel segment is realized by diameter measurement and it is modeled in the Gaussian model with 2-dimensional representations. In our method 150 samples of the retinal vessel are taken in the width measurement then its result is compared with the previous methods based on the comparison our proposed method is 78 percent accurate other than all the existing methods. The comparison was done by sub-pixel values so all profiles parameters are verified very accurately in this method

**2. Paper name:** A Novel Retinal Vessel Extraction Method Based on Dynamic Scales Allocation

**Author:** Duuduu Guu TungMa

**Abstract:** Automatic extraction of retinal vessels is significant for the diagnosis of eye diseases. Currently, the automatic extraction of the vessels in the retinal images with very low contrast and various widths is a bottleneck. In this paper, an effective retinal blood vessel extraction method to detect fine vessels more accurately was presented. The contribution of this work is that a novel dynamic scale allocation scheme of the matched filter was proposed. The whole image is divided into sub-blocks. His- program of each sub-block is fitted by the Gaussian function whose fitting parameters are used to select the scales. Compared with the existing blood vessel extraction using a uniform multiscale matched filter, the proposed method detects many fine vessels drowned by noise and has good width estimation.

**3. Paper name:** A Review on Retinal Vessel Segmentation and Classification Methods

**Author:** Sonam Singh, Rohit Kumar Tiwari.

**Abstract:** Retinal vessel segmentation is an essential attribute for retinal disease identification as it segments the retinal vasculature structure from the fundus image. It provides essential information on the retina for disease detection like diabetic retinopathy, hypertension, glaucoma, and other diseases. This paper investigates the various vessel segmentation approaches performed on 2- D retinal images, taken from a fundus camera and a review of the methodology is summarised in a more authentic way. We have compared the available vessel segmentation algorithms based on their performance on DRIVE and STARE datasets by considering performance metrics like accuracy, sensitivity, and specificity.

**4. Paper name:** A DATA-A-WARE DEEP SUPERVISED METHOD FOR RETINAL VESSEL SEGMENTATION.

**Author:** Suraj Mishra, DannyZ . Chen, X. Sharon Hu.

**Abstract:** Accurate vessel segmentation in retinal images is vital for retinopathy diagnosis and analysis. However, the existence of very thin vessels in low image contrast along with pathological conditions (e.g., capillary dilation or microaneurysms) renders the segmentation task difficult. In this work, we present a novel approach for retinal vessel segmentation focusing on improving thin vessel segmentation. We develop a deep convolutional neural network (CNN), which exploits the specific characteristics of the input retinal data to use deep supervision, for improved segmentation accuracy. In particular, we use the average input retinal vessel width and match it with the layer-wise effective receptive fields (LERF) of the CNN to determine the location of the auxiliary supervision. This helps the network to pay more attention to thin vessels, that otherwise, the network would 'ignore' during training. We verify our method on three public retinal vessel segmentation datasets (DRIVE, CHASE DB1, and STARE), achieving better sensitivity (10.18 methods while maintaining comparable specificity, accuracy, and AUC.

### III. METHODOLOGY

#### 1. Motivation

Fast processing response is a major requirement in many image processing applications. Image processing algorithms can be computationally expensive.

Data needs to be processed in parallel and optimized for real-time execution.

To improve the eye rating Performance



## 2. Objective

To the Objective of the system implement ELEMENT, an adaptive vessel segmentation framework. Which includes a novel set of features for vessel segmentation and a new means of classification that adheres to principles of region-growing growth.

## 3. Assumptions and dependencies

Assumptions:  
We have used Python Technique. Input as Text as a paragraph.  
Dependencies:  
We have used python libraries. Output to generate document summary.

## 4. Functional Requirements

Functional Specification:  
The application is user-friendly.  
It provides an easy interface to the user.  
The accessibility or response time of the application should be fast.  
Dependency and Constraints:  
End User application will be developed in Windows OS.  
All scripts shall be written in Python.  
The application design pattern shall be Singleton.

## 5. Functional Interface Requirements

*User Interfaces:*  
Tkinter: Tkinter is Python's de-facto standard GUI (Graphical User Interface) package. Tools in Tkinter Window: It refers to a rectangular area somewhere on the user's display screen. Top-level window: A window that exists independently on the screen. It will be decorated with the standard frame and controls for the desktop manager. It can be moved around the desktop, and can usually be resized  
*HARDWARE INTERFACES:*  
System Processors: Core2Duo Speed: 2.4 GHz  
Hard Disk: 150 GB  
*SOFTWARE INTERFACES:*  
Operating System: 64bit Windows 10 Coding Language: Python  
Design Constraints: Spyder & PyCharm

## 6. Non-Functional Requirements

*Performance Requirement:*  
The performance of the functions and every module must be well.  
The overall performance of the software will enable the users to work efficiently.  
The performance of detect Depression levels should be fast.  
The performance of the providing virtual environment should be fast.  
*Safety Requirements:*  
The application is designed in modules where errors can be detected and fixed easily. This makes it easier to install and update new functionality if required.

## 7. Software Quality Attributes

The software has many qualities and attributes that are given below:  
*Adaptability:* This software is adaptable by all users.  
*Availability:* This software is freely available to all users. The availability of the software is easy for everyone.



*Maintainability:* After the deployment of the project if any error occurs then it can be easily maintained by the software developer.

*Reliability:* The performance of the software is better which will increase the reliability of the Software.

*User Friendliness:* Since the software is a GUI application; the output generated is much user friendly in its behavior.

*Integrity:* Integrity refers to the extent to which access to software or data by unauthorized persons can be controlled.

*Security:* Users are authenticated using many security phases so reliable security is provided.

*Testability:* The software will be tested considering all aspects.

#### IV. ANALYSIS MODELS

The Waterfall Model is a step-by-step approach to software development. Each stage of the SDLC phase is intended to accomplish a specific goal. Winston Royce first presented it in 1970. This is how we will use it in our project. Because it is simple, straightforward, and uncomplicated, this paradigm is simple to understand and apply. It's simple to maintain because the model is tight, with clear deliverables and a review procedure for each phase. The waterfall paradigm works well for smaller projects with well-defined and well-known requirements.

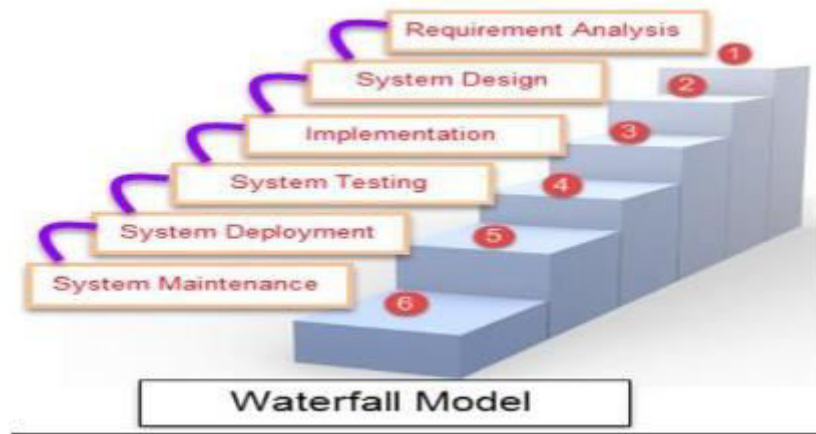


Figure: 1 Waterfall Model

#### V. SYSTEM DESIGN

##### 1. System Design



Figure: 2 System Architecture



1. Data Flow Diagrams



Figure: 3 DFD 0

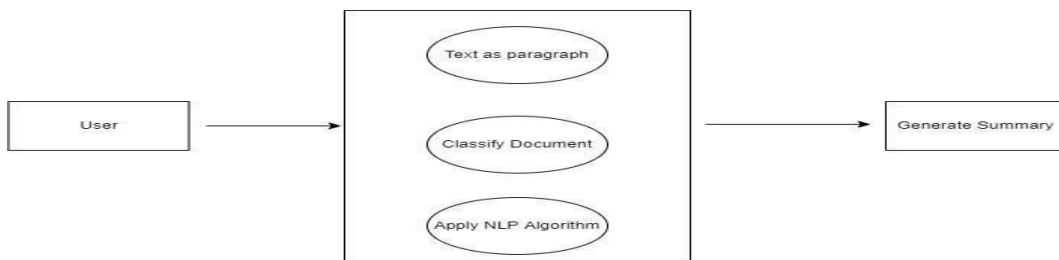


Figure: 4 DFD 1

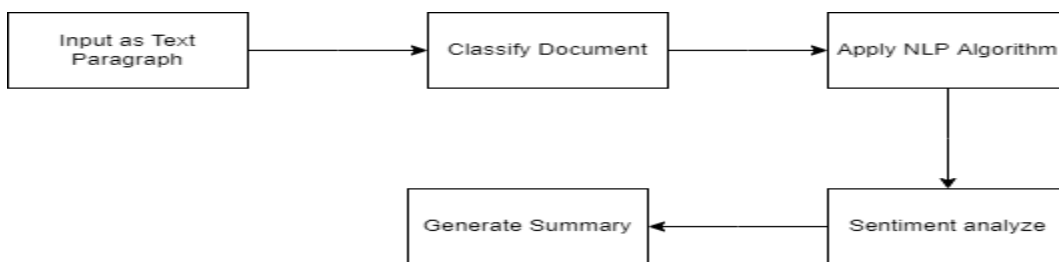


Figure: 5 DFD 2

2. UML Diagrams

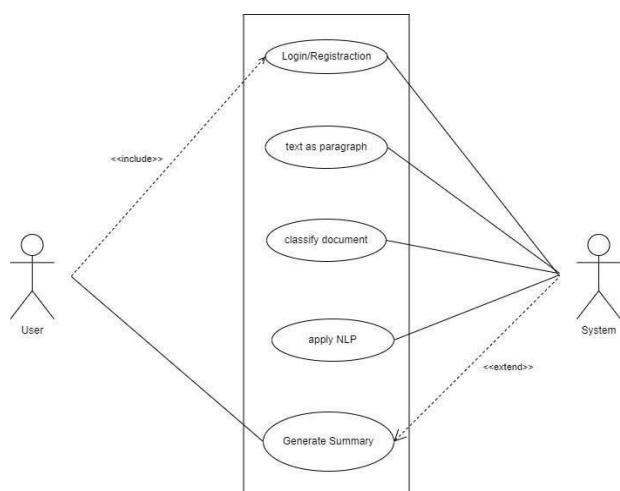


Figure: 6 UML Diagram

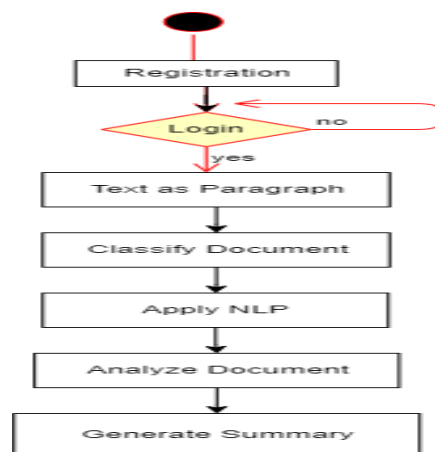


Figure: 7 Activity Diagram

The Unified Modelling Language (UML) is a programming language that is used to create software blueprints. The UML can be used to visualize, specify, build, and document software-intensive system artifacts. Although UML is process independent, it is best used in processes that are use case driven, architecture-centric, iterative, and incremental. There are a limited number of UML Diagrams available.

Use case diagram, Activity diagram, Sequence Diagram, and Class diagram.

## VI. ADVANTAGES AND APPLICATIONS

- User-Friendly system
- Easy to generate document summaries.
- Improved best accuracy.
- It can be used by large organizations requiring employee identification.
- Attendance tracking systems in various institutions.
- To keep create a database for government records by profiling citizens for security purposes.
- It can be used as an access controls systems for securing certain spaces from strangers.
- Verification systems can also employ this technique.
- Interactive Kiosks.

## VII. CONCLUSION

This work proposes ELEMENT, an adaptive vessel segmentation framework, which includes a novel set of features for vessel segmentation and a new means of classification that adheres to principles of region growth. The methodology was tested against three imaging modalities, namely, fundus photography, fluorescein angiography, and scanning laser ophthalmoscope. Future avenues for research include the application of this framework for vessel segmentation in MRI datasets and the further extension to 3D vessel segmentation by suitable augmentation of the feature set. This is yet another scenario where connectivity features coupled with region growth could prove valuable in terms of classification.

## REFERENCES

1. Dr.N. SATHISHKUMAR,Dr.C.ANNA PALAGA "A novel on 2 D Modeling for Width Measurement from Retinal Vessel"
2. Duuduu Guu TungMa "A Novel Retinal Vessel Extraction Method Based on Dynamic Scales Allocation "
3. Sonam Singh, Rohit Kumar Tiwari "A Review on Retinal Vessel Segmentation and Classification Methods"
4. E. O. Rodrigues ; A. Conci; T. B. Borchardt; A. C. Paiva; A. Correa Silva; T. MacHenry "Comparing results of thermographic images based diagnosis for breast diseases
5. Suraj Mishra, Danny Z. Chen, X. Sharon Hu "A DATA FOR RETINAL VESSEL SEGMENTATION"
6. E. O. Rodrigues, F. F. C. Morais, N. A. O. S. Morais, L. S. Conci, L. V. Neto, and A. Conci, "A novel approach for the automated segmentation and volume quantification of cardiac fats on computed tomography," *Comput. Methods Programs Biomedicine*, vol. 123, pp. 109–128, 2016.
7. E. O. Rodrigues, P. Liatsis, L. Satoru, and A. Conci, "Fractal triangular search: A metaheuristic for image content search," *IET Image Process.*, vol. 12, no. 8, pp. 1475–1484, 2018.
8. R. Vargas-Canas and P. Liatsis, "Interactive retinal blood flow estimation from fluorescein angiograms," *J Mech. Eng. Sci.*, vol. 226, pp. 2521–2537, 2012.
9. E. Frank, M. A. Hall, and I. H. Witten, *The Weka Workbench*, Online Appendix for "Data Mining: Practical Machine Learning Tools and Techniques" Morgan Kaufmann, (Publishers, Inc.), San Mateo, CA, USA, 2016.
10. N. Stergiopoulos, D. F. Young, and T. R. Rogge, "Computer simulation of arterial flow with applications to arterial and aortic stenoses," *J. Biomechanics*, vol. 25, no. 12, pp. 1477–1488, 1992.
11. F. Frangi, W. J. Niessen, K. L. Vincken, and M. A. Viergever, "Multiscale vessel enhancement filtering," *Med. Image Comput. Comput.- Assisted Intervention*, vol. 1496, pp. 130–137, 1998
12. WWW.Google.com



**INNO SPACE**  
SJIF Scientific Journal Impact Factor  
**Impact Factor: 8.118**



**ISSN** INTERNATIONAL  
STANDARD  
SERIAL  
NUMBER  
INDIA



# INTERNATIONAL JOURNAL OF INNOVATIVE RESEARCH

IN SCIENCE | ENGINEERING | TECHNOLOGY

 **9940 572 462**  **6381 907 438**  **ijirset@gmail.com**



[www.ijirset.com](http://www.ijirset.com)

Scan to save the contact details