



e-ISSN: 2319-8753 | p-ISSN: 2347-6710

IJRSET

International Journal of Innovative Research in
SCIENCE | ENGINEERING | TECHNOLOGY



INTERNATIONAL JOURNAL OF INNOVATIVE RESEARCH

IN SCIENCE | ENGINEERING | TECHNOLOGY

Volume 11, Special Issue 1, April 2022

ISSN INTERNATIONAL
STANDARD
SERIAL
NUMBER
INDIA

Impact Factor: 8.118

 9940 572 462

 6381 907 438

 ijirset@gmail.com

 www.ijirset.com

International Journal of Innovative Research in Science, Engineering and Technology
An ISO 3297: 2007 Certified Organization Volume 11, Special Issue 1, April 2022
9th National Conference on Frontiers in Communication and Signal Processing Systems (NCFCSPS '22)
28th -29th April 2022

Organized by

Department of ECE, Adhiyamaan College of Engineering, Hosur, Tamilnadu, India

Automatic Detection of Diabetic Retinopathy in Retinal Fundus Photographs using Deep Learning Techniques

Dr. S. Sumathi ¹, K. S. Dinesh ², M. Hemnath ³, B. Jaikanth ⁴, M. R. Mounish ⁵

Professor and HOD (ECE), Department of Electronics and Communication Engineering, Adhiyamaan College of Engineering, Hosur, Krishnagiri, Tamilnadu, India¹

U.G. Student, Department of Electronics and Communication Engineering, Adhiyamaan College of Engineering, Hosur, Krishnagiri, Tamilnadu, India^{2,3,4,5}

ABSTRACT: Diabetic Retinopathy may be a complication of polygenic disease that's caused by changes within the vessel of the tissue layer and it's one in all the leading reason behind sightlessness within the developed world. Diabetic Retinopathy may be a illness within which the retinal veins swell and it would even break. This harms the tissue layer of the attention and should prompt vision misfortune if the extent of polygenic disease is high. Early determination of Diabetic Retinopathy will counteract vision misfortune in patients. This paper is developed on automatic detection of diabetic retinopathy exploitation Support vector machine algorithmic rule. The input of this these kinds is utilizing bodily structure pictures of diabetic patients and it's given to the pre-processing stage for police investigation abnormalities related to bodily structure image, the photographs have to be compelled to be pre-processed so as to correct the uneven illumination, not adequate distinction between exudates and image background pixels and therefore the presence of noise within the input bodily structure image. The pre-processed image is applied to the feature extraction method. The technique planned during this paper for discovery of Diabetic Retinopathy infection level accentuates on assurance of 2 imperative forms of Diabetic Retinopathy; Haemorrhages and Exudates. each Haemorrhages and Exudates seem as bright lesions in retinopathies pictures and have sharp edges and high distinction with the back- ground. user tend to perform detection for exudates exploitation thresholding and process .In the method of feature extraction options ar to be extracted from the given bodily structure image. The extracted image is given to the SVM classifier. The classifier can sight, In light-weight of the closeness of those kinds and their add within the bodily structure pictures can decide the extent of Diabetic Retinopathy in patients.

KEYWORDS: Diabetic Retinopathy, Retinal veins, Fundus, Haemorrhages, Exudates, SVM classifier.

I. INTRODUCTION

Diabetic Retinopathy (DR) is an eye fixed health problem that happens owing to polygenic disease. It harms the microscopic veins within the tissue layer transportation regarding loss of vision. The danger of the health problem increments with age and on these lines moderately aged and more experienced diabetics are inclined to Diabetic Retinopathy. The National Eye Institute assesses that 40 to 45 % of persons having polygenic disease are influenced by diabetic retinopathy owing to that around 24,000 people finish up perceptibly daze every year. Facet effects of polygenic disease retinopathy do not surface till the purpose once visual damage to the tissue layer is going on, commonly by three-quarter vision. thus commonplace eye screening is very important to offer early finding and treatment before vital damage is caused to the tissue layer because it presumably decrease the danger of visual deficiency in these patients by half.

I.I.OBJECTIVE

In this paper a computer assisted diagnosis based on the digital processing of retinal images in order to help people detecting diabetic retinopathy in advance. The main goal is to automatically classify the grade diabetic retinopathy at any retinal fundus image. For that, an initial image processing stage isolates blood vessels, micro aneurysms and hard exudates in order to extract features that can be used by a support vector machine to figure out the retinopathy grade of each retinal image. This proposal has been tested on a database of retinal images labelled according to a diabetic retinopathy. User obtained a maximum predictive accuracy of 95.38% Robustness with respect to changes in the parameters of the algorithm has also been evaluated.

II. LITERATURE REVIEW

[1] S. H. Kassani, P. H. Kassani, M. J. Wesolowski, K. A. Schneider and R. Deters, "Breast cancer diagnosis with transfer learning and global pooling", 2019.[2] Yuchen WU, Ze Hu, "Recognition of Diabetic Retinopathy Based on Transfer Learning", 2019. [3] Sheikh Muhammad Saiful Islam, Md Mahedi Hasan and Sohaib Abdullah, "Deep Learning based Early Detection and Grading of Diabetic Retinopathy Using Retinal Fundus Images", 2018.

III. ALGORITHM

III.I. SUPPORT VECTOR ALGORITHM (SVM)

Support Vector Machine or SVM is one in all the foremost common supervised Learning algorithms that is employed for Classification in addition as Regression issues. However, primarily, it's used for Classification issues in Machine Learning. The goal of the SVM algorithmic rule is to make the simplest line or call boundary which will segregate n-dimensional area into categories so user is able to simply place the new information within the correct class within the future. This best call boundary is named a hyperplane. SVM chooses the acute points/vectors that facilitate in making the hyperplane. These extreme cases are referred to as support vectors, and thus algorithmic rule is termed as Support Vector Machine.

III.I.I. WORKING OF SVM

An SVM model is largely a illustration of various categories in a very hyperplane in multidimensional area. The hyperplane are generated in associate degree unvarying manner by SVM so the error is reduced. The goal of SVM is to divide the datasets into categories to seek out a most marginal hyperplane (MMH).

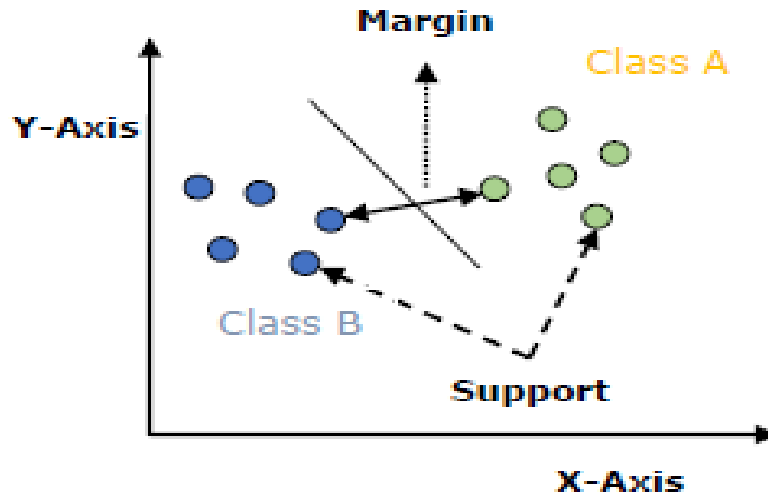


Figure 1: SVM algorithm

III.II. SUPPORT VECTORS

Data points that are highest to the hyperplane is named support vectors. Separating line are outlined with the assistance of those knowledge points.

III.III. HYPERPLANE

As users able to see within the on top of diagram, it's a choice plane or area that is split between a groups of objects having totally different categories.

III.IV. MARGIN

It may be outlined because the gap between 2 lines on the closet knowledge points of various categories. It is calculated because the perpendicular distance from the road to the support vectors. Massive margin is taken into account as an honest margin and tiny margin is taken into account as a nasty margin. The most goal of SVM is to divide the datasets into categories to seek out a most marginal hyperplane (MMH) and it is exhausted the subsequent 2 steps: (1) 1st, SVM can generate hyperplanes iteratively that segregates the categories in best manner. (2) Then, it'll select the hyperplane that separates the categories properly.

III.II. GRAYSCALE CONVERSION

A grayscale (or gray level) image is solely one within which the sole colours square measure reminder gray. The rationale for differentiating such pictures from the other variety of color image is that less data must be provided for every peel. associate degree intuitive thanks to convert a color image 3D array to a grayscale 2nd array is, for every pel, take the typical of the red, green, and blue pel prices to induce the grayscale value. This combines the lightness or brightness contributed by every color band into an inexpensive gray approximation.

The nonheritable image resolution is 1280 × 1024 in 24bit JPEG format. The colour image of a watch is taken as input image and is reborn to a grayscale image severally. Grayscale pictures square measure distinct from one-bit bi-tonal black-and-white pictures, which, within the context of pc imaging, square measure pictures with

solely 2 colours: black and white (also known as bi-level or binary images). Grayscale pictures have several reminder gray in between.

Grayscale pictures are often the results of measure the intensity of sunshine at every peel per a selected weighted combination of frequencies (or wavelengths), and in such cases they're monochromatic correct once solely one frequency (in observe, a slim band of frequencies) is captured. The frequencies will in essence be from anyplace within the spectrum (e.g. infrared, actinic ray, ultraviolet, etc.).

A quantitative chemical analysis (or additional specifically photometric) grayscale image is a picture that includes a outlined grayscale color house, that maps the hold on numeric sample values to the achromatic channel of a customary color house, that itself relies on measured properties of human vision.

If the initial color image has no outlined color house, or if the grayscale image isn't meant to own identical human-perceived achromatic intensity because the color image, then there's no distinctive mapping from such a color image to a grayscale image.

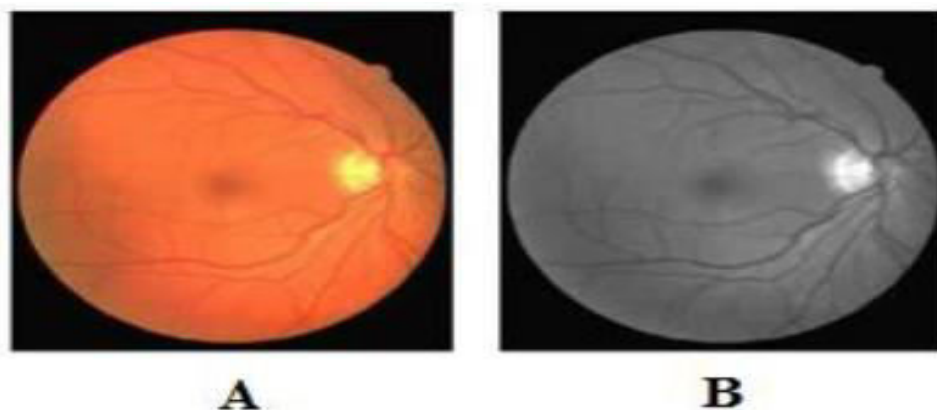


Figure 2: Grayscale image

III.III. ADAPTIVE HISTOGRAM EQUALIZATION

Adaptive histogram equalization (AHE) could be a pc image process technique accustomed improve distinction in pictures. It differs from normal bar chart feat within the respect that the adaptive technique computes many histograms, a definite section of the image, and uses them to distribute the lightness values of the image. It's so appropriate for up the native distinction and enhancing the definitions of edges in every region of a picture.

However, AHE includes a tendency to over amplify noise in comparatively unvaried regions of a picture. A variant of Adaptive histogram equalization known as distinction restricted Adaptive histogram equalization (CLAHE) prevents this by limiting the amplification.

III.III.I. PROPERTIES OF AHE

The size of the neighbourhood region could be a parameter of the tactic. It constitutes a characteristic length scale: distinction at smaller scales is increased, whereas distinction at larger scales is reduced.

Due to the character of bar chart feat, the result price of a peel beneath AHE is proportional to its rank among the pixels in its neighbourhood. This permits associate degree economical implementation on specialist hardware

Organized by

Department of ECE, Adhiyamaan College of Engineering, Hosur, Tamilnadu, India

which will compare the middle pixel with all different pixels within the neighbourhood. associate degree unnormalized result price are often computed by adding two for every pixel with a smaller price than the middle pixel and adding one for every pixel with equal price.

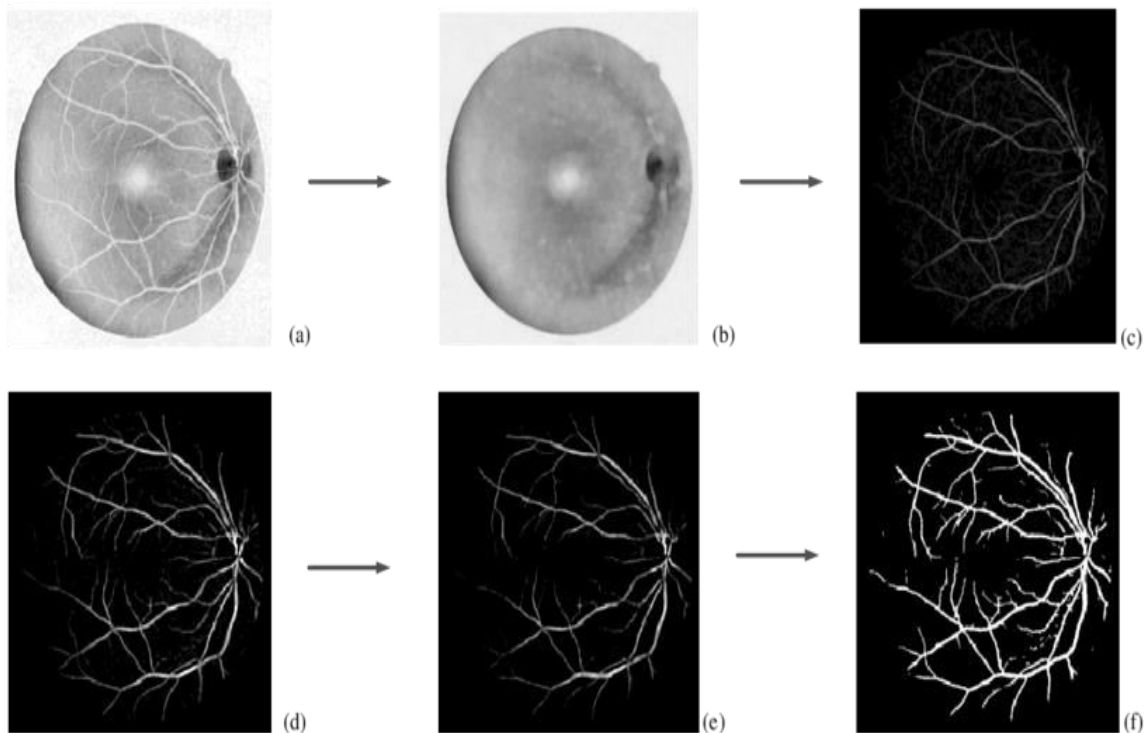


Figure 3: AHE image

III.IV. DISCRETE WAVELET TRANSFORM (DWT)

DWT could be a rippling remodel that the wavelets square measure sampled at separate intervals. DWT provides a co-occurring spatial and frequency domain data of the image. In DWT operation, a picture are often analysed by the mix of research filter bank and devastation operation.

The DWT decomposes a digital signal into totally different sub bands in order that the lower frequency sub bands have finer frequency resolution and coarser time resolution compared to the upper frequency sub bands. DWT is that the basis of the new JPEG2000 compression normal.

III.V. DISCRETE WAVELET TRANSFORM (DWT)

Thresholding could be a very hip segmentation technique, used for separating associate degree object from its background. Within the article below, I actually have delineated numerous techniques accustomed threshold grayscale images (8-bit).

The process of thresholding involves, examination every pixel price of the image (pixel intensity) to a such as threshold. This divides all the pixels of the input image into two groups:

International Journal of Innovative Research in Science, Engineering and Technology
An ISO 3297: 2007 Certified Organization *Volume 11, Special Issue 1, April 2022*
9th National Conference on Frontiers in Communication and Signal Processing Systems (NCFCSPS '22)
28th -29th April 2022

Organized by

Department of ECE, Adhiyamaan College of Engineering, Hosur, Tamilnadu, India

- ✓ Pixels having intensity value lower than threshold.
- ✓ Pixels having intensity value greater than threshold.

III.VI. QUANTITATIVE ANALYSIS

Quantitative analysis (QA) could be a technique that uses mathematical and applied mathematics modelling, measure, and analysis to know behaviour. Quantitative analysts represent a given reality in terms of a numerical price.

IV. PROGRAMMING

IV.I. PYTHON

Python is a dynamic, interpreted (byte code-compiled) language. There are no type declarations of variables, parameters, functions, or methods in source code. This makes the code short and flexible, and you lose the compile-time type checking of the source code. Python tracks the types of all values at runtime and flags code that does not make sense as it runs.

An excellent way to see how Python code works is to run the Python interpreter and type code right into it. If you ever have a question like, "What happens if I add an int to a list?" Just typing it into the Python interpreter is a fast and likely the best way to see what happens.

Python is a popular programming language. It was created by Guido van Rossum and released in 1991. It is used for:

- ✓ Web development (server-side),
- ✓ Software development,
- ✓ Mathematics,
- ✓ System scripting.

IV.II. USES OF PYTHON

- ✓ Python can be used on a server to create web applications.
- ✓ Python can be used alongside software to create workflows.
- ✓ Python can connect to database systems. It can also read and modify files.
- ✓ Python can be used to handle big data and perform complex mathematics.
- ✓ Python can be used for rapid prototyping, or for production-ready software development.
- ✓ Python is used for web development, AI, machine learning, operating systems, mobile application development, and video games. A successor to the ABC programming language, Python is a high level, dynamically typed language developed by Guido Van Rossum in the early 1980s.

Organized by

Department of ECE, Adhiyamaan College of Engineering, Hosur, Tamilnadu, India

V. BLOCK DIAGRAM

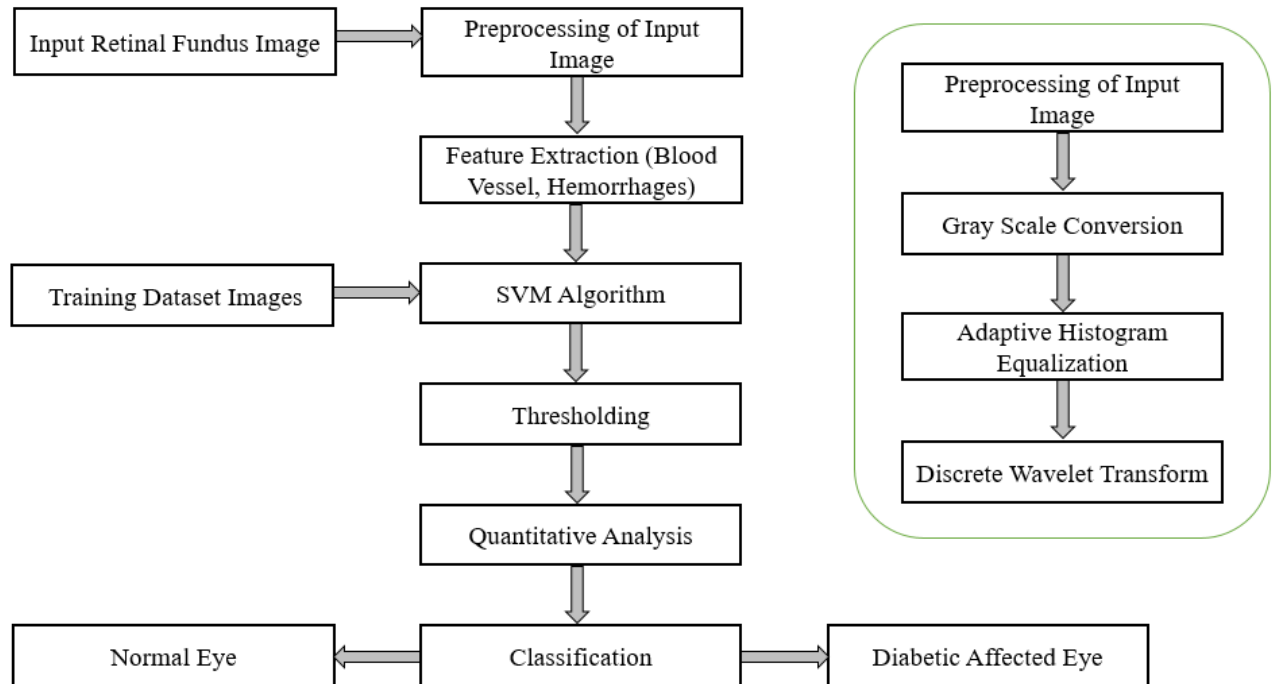


Figure 4:Block Diagram

VI. WORKING

The block diagram represents the detection of diabetic retina from the input Retinal image is given from the database to the preprocess stage by using SVM algorithm. In that RGB image is converted into gray scale image.

The gray scale image contains the clear view of the eye so it converted. The preprocessed image is applied to the feature extraction process.

The technique proposed in this paper for discovery of Diabetic Retinopathy infection level accentuates on assurance of two imperative sorts of Diabetic Retinopathy.

Hemorrhages and Exudates. Both Hemorrhages and Exudates appear as bright lesions in retinopathies images and have sharp edges and high contrast with the back- ground. After the feature extraction, the SVM support vector machine algorithm will classify the normal eye and the diabetic retinopathy eye by comparing the trained fundus image in the training dataset.

VII. OUTPUT

In this paper, the software application to detect the diabetics in retina using deep learning techniques. Here, image of a human eye is given as input and using SVM Algorithm the given image is compared with prestored images (Non affected images) in dataset. After comparing, it should detect whether given image of an eye is affected by diabetic or not.

International Journal of Innovative Research in Science, Engineering and Technology
An ISO 3297: 2007 Certified Organization *Volume 11, Special Issue 1, April 2022*
9th National Conference on Frontiers in Communication and Signal Processing Systems (NCFCSPS '22)
28th -29th April 2022

Organized by

Department of ECE, Adhiyamaan College of Engineering, Hosur, Tamilnadu, India

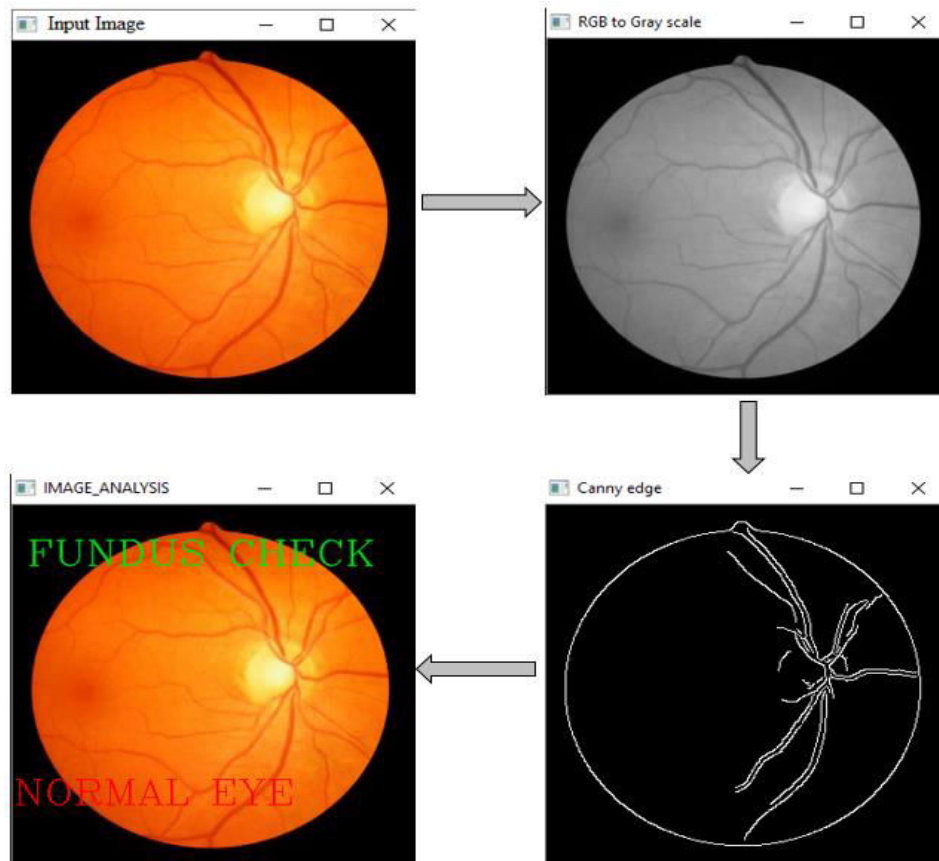


Figure 5:Process of Retinal Fundus Photograph

```
D:\college\Dinesh_Final_Project\output\Glaucoma_first_page\Glaucoma_first_page.exe
Initialize the process
RGB to Gray scale conversion
canny edge conversion
cup-to-disc ratio = 0.2
output detected
normal eye
```

Figure 6:Text Process of Retinal Fundus Photograph

VIII. RESULT AND CONCLUSION

Detection of diabetic retinopathy in retinal image is a challenging one. So user predict the method for detection in three stages. One is to remove the impurities from the image. Another one is to extract the features from the image. Features would be really helpful to identify the disease. In retina the abnormal tissue has to be grown in enormous manner than normal tissue which are categorized under an abnormal image. Identifying the location of disease can be done using SVM classification. The experimental results have shown that this technique is robust in detecting and bounding the abnormal cells in retinal images despite in homogeneity intensity or the complicate shape of the diabetic retinopathy. The SVM has an accuracy of 95.38%. However, user can improve the efficiency of the correct classification by extracting better features and by increasing the number of data in each class and also by combining with other pattern classification models.

IX. FUTURE ENHANCEMENT

After scanned copy of an eye, all the patient's report will be stored, maintained automatically in the cloud and the patient can be accessed whenever the report is required. This can be easily accessed in mobiles phones or in the computer which will be a user friendly for the user.

REFERENCES

- [1] Xiaomin Zhou, Chen Li, Md Mamunur Rahaman, Yudong Yao et al. "A Comprehensive Review for Breast Histopathology Image Analysis Using Classical and Deep Neural Networks", IEEE Access, 2020
- [2] Ranjani MB, Poovendran R (2016) Image duplication copy move forgery detection using discrete cosine transforms method. Int J Appl Eng Res 11(4):2671–2674.
- [3] Kele Xu, Dawei Feng, and Haibo Mi, "Deep Convolutional Neural Network-Based Early Automated Detection of Diabetic Retinopathy Using Fundus Image," Received: 10 November 2017; Accepted: 22 November 2017; Published: 23 November 2017.
- [4] Sheikh Muhammad Saiful Islam, Md Mahedi Hasan, and Sohaib Abdullah, "Deep Learning based Early Detection and Grading of Diabetic Retinopathy Using Retinal Fundus Images," arXiv:1812.10595v1 [cs.CV] 27 Dec 2018. [8] Lam C, Yi D, Guo M, Lindsey T., "Automated Detection of Diabetic Retinopathy using Deep Learning," AMIA Jt Summits Transl Sci Proc. 2018 May 18;2017:147-155. PMID: 29888061; PMCID: PMC5961805.
- [5] R Borys Tymchenko, Philip Marchenko and Dmitry Spodarets, "Deep Learning Approach to Diabetic Retinopathy Detection".
- [6] Weiguo Fan, Edward A. Chandan K. Reddy, "A Deep Learning Based Pipeline for Image Grading of Diabetic Retinopathy".
- [7] Eswar Kumar Kilari, Swathi Putta. " Delayed progression of diabetic cataractogenesis and retinopathy by in STZ-induced diabetic rats ", Cutaneous and Ocular Toxicology, 2019
- [8] Keith A. Goatman, Alan D. Fleming, Sam Philip, Graeme J. Williams, John A. Olson and Peter F. Sharp, "Detection of New Vessels on the Optic Disc Using Retinal Photographs", IEEE Transactions on Medical Imaging, Vol. 30, No. 4, pp. 972 – 979, 2011
- [9] Le, D.; Alam, M.N.; Lim, J.I.; Chan, R.P.; Yao, X. Deep learning for objective OCTA detection of diabetic retinopathy. Ophthalmic Technol. 2020, 11218, 112181P.
- [10] Singh, A.; Sengupta, S.; Mohammed, A.R.; Faruq, I.; Jayakumar, V.; Zelek, J.; Lakshminarayanan, V. What is the Optimal Attribution Method for Explainable Ophthalmic Disease Classification? In Lecture Notes in Computer Science (Including Subseries Lecture Notes in Artificial Intelligence and Lecture Notes in Bioinformatics); Springer: Cham, Switzerland, 2020; pp. 21–31.

International Journal of Innovative Research in Science, Engineering and Technology
An ISO 3297: 2007 Certified Organization *Volume 11, Special Issue 1, April 2022*
9th National Conference on Frontiers in Communication and Signal Processing Systems (NCFCSPS '22)
28th -29th April 2022

Organized by

Department of ECE, Adhiyamaan College of Engineering, Hosur, Tamilnadu, India

BIOGRAPHY



Dr. S. SUMATHI,
PROFESSOR & HOD (ECE)
Electronics And Communication
Engineering Department,
Adhiyamaan College of Engineering,
Anna University.



DINESH K S
Electronics And Communication
Engineering Department,
Adhiyamaan College of Engineering,
Anna University.



HEMNATH M
Electronics And Communication
Engineering Department,
Adhiyamaan College of Engineering,
Anna University.



JAIKANTH B
Electronics And Communication
Engineering Department,
Adhiyamaan College of Engineering,
Anna University.



MOUNISH M R
Electronics And Communication
Engineering Department,
Adhiyamaan College of Engineering,
Anna University.



INNO SPACE
SJIF Scientific Journal Impact Factor
Impact Factor: 8.118



ISSN INTERNATIONAL
STANDARD
SERIAL
NUMBER
INDIA



INTERNATIONAL JOURNAL OF INNOVATIVE RESEARCH

IN SCIENCE | ENGINEERING | TECHNOLOGY

 **9940 572 462**  **6381 907 438**  **ijirset@gmail.com**



www.ijirset.com

Scan to save the contact details