



e-ISSN: 2319-8753 | p-ISSN: 2347-6710

IJRSET

International Journal of Innovative Research in
SCIENCE | ENGINEERING | TECHNOLOGY

INTERNATIONAL JOURNAL OF INNOVATIVE RESEARCH

IN SCIENCE | ENGINEERING | TECHNOLOGY

Volume 11, Special Issue 1, April 2022

ISSN INTERNATIONAL
STANDARD
SERIAL
NUMBER
INDIA

Impact Factor: 8.118

 9940 572 462

 6381 907 438

 ijirset@gmail.com

 www.ijirset.com

An Energy Efficient Breeding Artificial Fish Swarm Algorithm for Optimal Cluster Head Selection in Wireless Sensor Networks

Mr.M.Ashokkumar¹, S.Dhaneshwari², S.Madhumitha³, B.S.Megana⁴

Assistant Professor, Department of Electronics and Communication Engineering, Adhiyamaan College of Engineering, Hosur, Krishnagiri, Tamilnadu, India¹

UG Scholars, Department of Electronics and Communication Engineering Adhiyamaan college of Engineering, Hosur, Krishnagiri, Tamilnadu,India²³⁴

ABSTRACT: Wireless detector Networks (WSNs) square measure created from an oversized range of freelance nodes with sensors, wireless interfaces for communication with restricted process and energy resources. WSNs square measure used for distributed and cooperative sensing of events that square measure of interest altogether fields of science. For economical operation of detector network information aggregation and transmission of knowledge to the bottom Station plays a crucial role and will be capable of adapting itself to the situation underneath that it's deployed. to scale back the general network energy consumption, the nodes square measure divided into clusters with one node acting because the Cluster Head (CH) to receive and mixture the collected data. cluster within the detector network is completed to scale back the communication overhead and thereby improve the network performance and lifelong. AN optimum choice of the CHs is AN NP-hard problem; so, numerous metaheuristic-based techniques are projected within the literature. This work projected AN optimized CH choice victimization AN improved Artificial Fish Swarm formula (AFSA) metaheuristic. in depth simulations show the improved performance of the projected protocol compared to alternative well-liked techniques together with LEACH and Genetic formula.

KEYWORDS: Wireless Sensor Networks (WSNs), Link quality Mobility, End to end delay, Artificial Fish Swarm Algorithm (AFSA)

I. INTRODUCTION

Advancements in low-power electronic devices integrated with wireless communication capabilities area unit one in every of the recent areas of analysis within the field of the wireless device networks (WSNs). WSNs comprises spatially distributed autonomous sensors distributed over a locality of interest to watch some development through either some random or strategic strategies. extended quantity of labor has enabled the look, the implementation, and therefore the readying of those device networks tailored to the distinctive demand of sensing and observance in period of time applications. These nodes have aboard wireless modules that comprises microcontroller, transceiver, power and memory units. A device mode is mounted on the node with multiple forms of sensors counting on the sort of application like environmental observance, police investigation, military applications, automation in transportation, health, and industrial applications. WSN potency depends on the cooperation of wireless nodes and economical information aggregation. ancient routing methods attempt to find shortest path between supply and destination nodes.

II. OBJECTIVE

To reduce the network energy consumption, the nodes area unit divided into clusters with one node acting because the Cluster Head (CH) to receive and mixture the collected info. To improved optimized CH choice by victimization metaheuristic Artificial Fish Swarm formula (AFSA).

III. LITERATURE REVIEW

5.1 A survey: Typical security issues of software-defined networking.Y. Liu et al [2019] IEEE. The background, architecture and working process of SDN are firstly introduced and typical security issues are analysed. This solution is more efficient in terms network and computing resources. The scalability is also good y for all the covered scenarios. There is a need to automate the translation from the high-level abstract description view into the low-level implementation view of security functions.

5.2. The Security Network Coding System With Physical Layer Key Generation in Two-Way Relay Networks Y. Kong et al [2018] IEEE.

The security network coding schemes with key generation from multipath channels are utilized to enhance the security performance. These schemes are secure against wiretap attack. It is difficult to obtain the perfect CSIs in practice. The encryption algorithm used in the security SFNC and PLNC system is not an optimized one.

5.3 Efficient Provisioning of Security Service Function Chaining Using Network Security Defense Patterns.A. Shameli-Sendi et al [2019] IEEE.

Network security defense patterns are used to capture various security constraints and to select compliant security functions. This solution is more efficient in terms network and computing resources. The scalability is also good y for all the covered scenarios. There is a need to automate the translation from the high-level abstract description view into the low-level implementation view of security functions.

5.4. Comparative Analysis of Control Plane Security of SDN and Conventional Networks.A. Abdou et al [2018] IEEE

A novel framework allowing an objective security comparison between SDNs and conventional networks is utilized. The framework is useful to both network administrators and security researchers. Deployment of SDNs is strong robust and highly secure. This framework is not able to provide an efficient analysis for threat models.

5.5. A Policy-Based Security Architecture for Software-Defined Networks.V. Varadharajan et al [2019] IEEE

A policy driven security architecture is used for securing end to end services across multiple SDN domains. This architecture is able to distribute security capabilities. The implementation of intra-domain key management to interdomain key management is not possible with this architecture. Many security attacks are involved in this architecture. The unknown anomalies in SDN environments are not accurately classified. The false alarms in SDNs are high.

IV. WORKING METHODOLOGY

Artificial Fish Swarm formula (AFSA) is one in all the simplest Swarm Intelligence algorithms with benefits like hardiness, world search ability, tolerance of parameter setting, and it's conjointly tested to be insensitive to initial values. ASFA mimics the behavior of fish swarms preying and has been found to converge in no time [27]. The search starts with random solutions mapped to every fish. Fitness is evaluated and also the fish follow method is initiated and fish follows another fish with higher resolution. If the answer is suboptimal, the swarming method is initiated. If the specified resolution isn't met, preying method is initiated. This method is sustained until the specified threshold or termination criteria is met. AFSA has four functions modelled from fish behaviours in fish swarms. the primary perform is free move behaviour: as in nature, fishes move freely within the swarm once they don't prey. The second perform is preying behaviour wherever it uses its sense of vision, smell and the other accessible sensors on their bodies. In AFSA, the realm wherever a synthetic fish will sense a prey is modelled as a neighbourhood with a visual-sized radius. The third perform is follow behaviour wherever a fish finds food, alternative swarm members conjointly follow it to achieve the food. The last perform is swarm behaviour that mimics fishes in nature wherever fish invariably try and be within the swarm and to not leave it so as to be shielded from hunters The surroundings, wherever associate degree AF lives, is that the resolution house. Food consistency degree within the water space is AFSA objective perform. The following conditions area unit assumed

- All nodes area unit settled haphazardly within the network.
- every node has constant initial energy.
- All fishes area unit androgynous in nature.
- Since fishes area unit sexual in nature, sexual activity is feasible between any 2 fishes.
- The free house radio model is employed and thus as distance will increase the energy needed to transmit one little bit of information conjointly will increase.

V. EXISTING METHOD

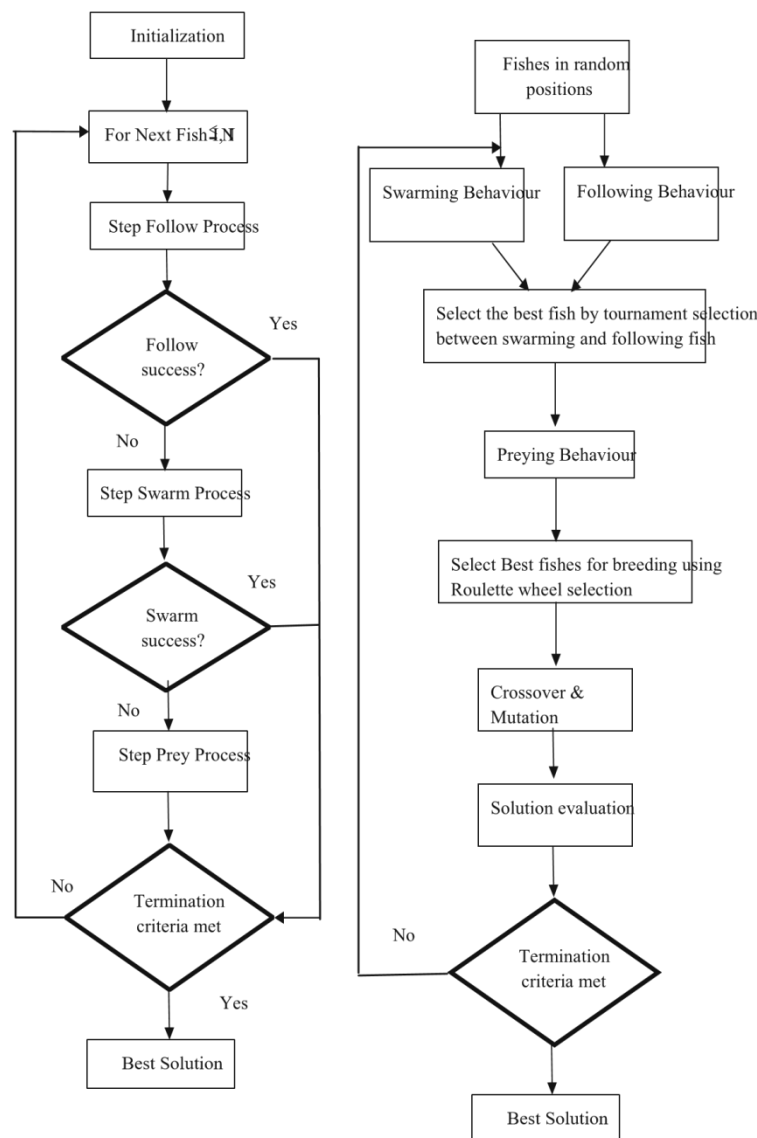
The WSNs are used for distributed and cooperative sensing of events that are of interest altogether. For efficient operation of sensing element network information aggregation and transmission of information to the bottom Station plays a vital role and will be capable of adapting itself to the situation underneath that it's deployed. to scale back the general network energy consumption, the nodes are divided into clusters with one node acting because the Cluster Head (CH) to receive and mixture the collected info. bunch in sensing element network is finished to scale back the communication overhead and thereby improve the network performance and lifelong. associate degree best choice of the CHs is associate degree NP-hard downside, therefore, numerous metaheuristic based mostly techniques are planned within the literature. the protection scenario prediction isn't correct for the SDN information plane. The used particle swarm improvement algorithmic program and long-short-term memory neural network don't seem to be stable. Providing timely preventive measures before the network being vulnerable is simply too tough.

VI. PROPOSED METHOD

Initially, the packets to be transmitted are taken as inputs. The source node and the destination nodes are identified. Identify the cluster head (CH) among nodes using the AFSA approach. Transmit the data from the source to destination through the CH. Binary Fish Swarm Algorithm respectively. When the number of nodes is 1000, proposed Binary Fish Swarm Algorithm with proposed transfer function method decreases Clustering energy/dissipated energy by 101.62, 47.69, and 18.62 % when compared to LEACH, GA, and Binary Fish

Swarm Algorithm respectively. BAFSA Algorithm with proposed transfer function method increases Packet loss rate by 5.16 and 3.33 % when compared to LEACH, GA, decreases by 0.9 % for Binary Fish Swarm Algorithm. When the number of nodes is 500

VII.FLOW CHART



Compared to the AFSA, the projected technique incorporates 2 major changes. The solutions area unit every which way split and perform either swarming or following behavior. mistreatment tournament choice the simplest fishes area unit chosen and therefore the preying process is initiated. Fishes that area unit very winning in preying area unit chosen and allowed to mate amongst themselves. The new answer made together with best fishes ar taken to successive iteration. during this work, the solutions ar described exploitation binary values and

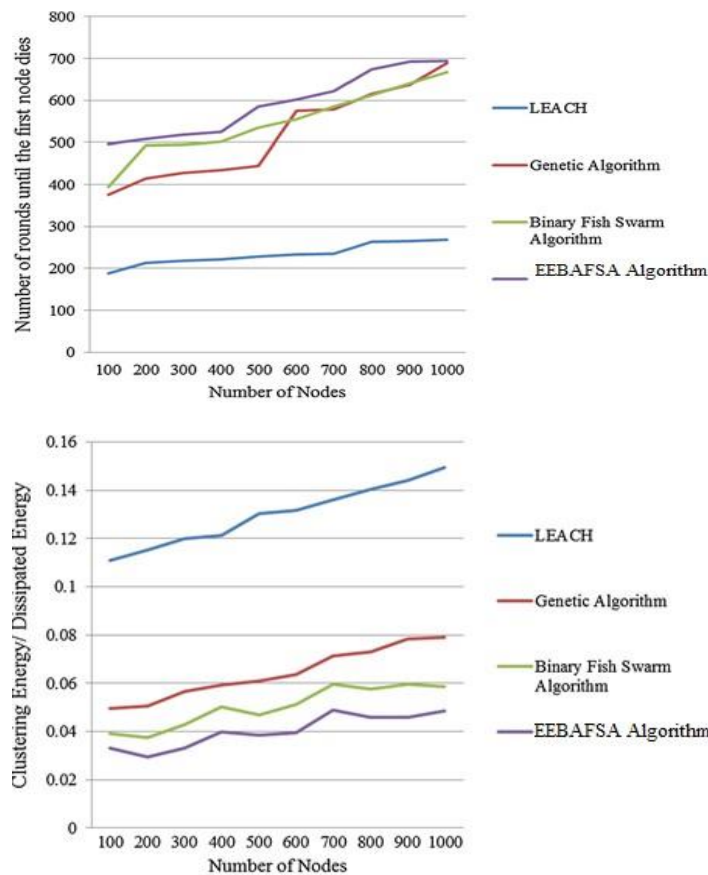
Organized by

Department of ECE, Adhiyamaan College of Engineering, Hosur, Tamilnadu, India

distance between the fishes computed exploitation playacting distance. The playacting distance between 2 strings u, v is that the variety of places wherever u and v dissent. the simplest fishes ar designated exploitation the wheel choice. In wheel choice, chance of a fish being designated is directly proportional to its fitness. The chance of a fish i with fitness f_i designated from N variety of fishes is computed

VIII. SIMULATION OUTPUT

Simulations were administrated by variable the quantity of nodes from one hundred to a thousand and Network size exploitation 2000 sq m. The simulation setup parameters is that the planned Binary Fish Swarm rule with planned transfer perform is healthier than LEACH, GA, and Binary Fish Swarm rule. once the quantity of nodes is one hundred, once the quantity of nodes is a thousand, planned Binary Fish Swarm rule with planned transfer perform methodology has improved range of rounds till the primary node dies by eighty eight.68, 0.87, and 3.96 that when compared to LEACH, GA, and Binary Fish Swarm rule . range of rounds till the last node dies, the planned Binary Fish Swarm rule with planned transfer perform is healthier than LEACH, GA, and Binary Fish Swarm rule. once the quantity of nodes is one hundred, planned Binary Fish Swarm rule with planned transfer perform methodology decreases bunch energy/dissipated energy by 108.12, 40.1, and 16.62%.



IX. CONCLUSION

Selection of CHs is an NP-Hard problem as existing applied mathematics techniques manufacture sub optimum solutions. This work projected associate degree optimized CH choice employing a Binary Fish Swarm

formula metaheuristic. The projected formula has quick convergence, smart fault tolerance and smart native search capabilities. intensive simulations was conducted to judge the projected Binary Fish Swarm formula and was compared to different common techniques as well as LEACH and GA. Results demonstrate that the projected CH choice reduces packet loss and improves the network life.

REFERENCES

1. Bhimarao, L., & Uma, S. (2014). Disaster area communication using neighbor coverage in MANET. *International Journal of Science, Engineering and Technology Research*, 3, 1310–1314.
2. <http://www.comp.brad.ac.uk/~sburuha1/wirelessadhoc.html>.
3. Du, X., & Zhao, Z. (2010). A group key agree management scheme for MANET. *International Journal of Nonlinear Science*, 10(1), 77–81.
4. Al-Omari, S. A. K., & Sumari, P. (2010). An overview of mobile ad hoc networks for the existing protocols and the applications. *International Journal of Applications of Graph Theory in Wireless ad hoc Networks and Sensor Networks*, 2(1), 87–110.
5. Mamalis, B., Gavalas, D., Konstantopoulos, C., & Pantziou, G. (2009). Clustering in wireless sensor networks. *RFID and Sensor Networks: Architectures, Protocols, Security and Integrations*, Y. Zhang, LT Yang, J. Chen, eds, pp. 324–353.
6. Maraiya, K., Kant, K., & Gupta, N. (2011). Efficient cluster head selection scheme for data aggregation in wireless sensor network. *International Journal of Computer Applications*, 23(9), 10–18.
7. Sen, A. (2006). Swarm Intelligence based optimization of MANET cluster formation. Doctoral dissertation, University of Arizona.
8. Karimi, M., Naji, H. R., & Golestani, S. (2012). Optimizing cluster-head selection in wireless sensor networks using genetic algorithm and harmony search algorithm. In *Electrical Engineering (ICEE), 2012 20th Iranian Conference on* (pp. 706–710). IEEE.
9. Kavitha, G., & Wahidabanu, R. (2014). Foraging optimization for cluster head selection. *Journal of Theoretical & Applied Information Technology*, 61(3), 571–579.
10. Kaur, K., & Singh, H. (2015). Cluster head selection using honey bee optimization in wireless sensor network. *International Journal of Advanced Research in Computer and Communication Engineering*, 4(5), 716–721.
11. C. C. Nachiar, N. Ambika, R. Moulika and R. Poovendran, "Design of Cost-effective Wearable Sensors with integrated Health Monitoring System", *2020 Fourth International Conference on I-SMAC (IoT in Social Mobile Analytics and Cloud) (I-SMAC)*, pp. 1289-1292, 2020.
12. Ranjani MB, Poovendran R (2016) Image duplication copy move forgery detection using discrete cosine transforms method. *Int J ApplEng Res* 11(4):2671–2674
13. Poovendran R, Sumathi S (2019) An area-efficient low-power SCM topology for high performance network-on
14. Chip (NoC) architecture using an optimized routing design. *Concurrency ComputPract Experience* 31(14)
16. POOVENDRAN R, SUMATHI S. An area-efficient FPGA implementation of network-on-chip (NoC) router architecture for optimized multicore-SoC communication [J] . *Sensor Lett*, 2018, 16(7): 552-560
17. Poovendran R., Muniraj S., Nandakumar A. On Chip Implementation of Packet Switched Network. *IOSR Journal of Electronics and Communication Engineering (IOSR-JECE)*, 2014, vol. 9, is. 2, pp. 38–42.

International Journal of Innovative Research in Science, Engineering and Technology

An ISO 3297: 2007 Certified Organization

Volume 11, Special Issue 1, April 2022

9th National Conference on Frontiers in Communication and Signal Processing Systems (NCFCSPS '22)

28th -29th April 2022

Organized by

Department of ECE, Adhiyamaan College of Engineering, Hosur, Tamilnadu, India

BIOGRAPHY



Mr M.Ashokkumar, Assistant Professor,
Electronics and Communication
Engineering Department, Adhiyamaan
College of Engineering, Anna
University.



S.Dhaneshwari, Bachelor of Engineering
(student), Adhiyamaan College of
Engineering, Anna University



S.Madhumitha,
Bachelor of Engineering (student),
Adhiyamaan College of Engineering,
Anna University



B.S.Megana,
Bachelor of Engineering (student),
Adhiyamaan College of Engineering,
Anna University



INNO SPACE
SJIF Scientific Journal Impact Factor
Impact Factor: 8.118



ISSN INTERNATIONAL
STANDARD
SERIAL
NUMBER
INDIA



INTERNATIONAL JOURNAL OF INNOVATIVE RESEARCH

IN SCIENCE | ENGINEERING | TECHNOLOGY

 **9940 572 462**  **6381 907 438**  **ijirset@gmail.com**



www.ijirset.com

Scan to save the contact details