



e-ISSN: 2319-8753 | p-ISSN: 2347-6710

# IJRSET

International Journal of Innovative Research in  
**SCIENCE | ENGINEERING | TECHNOLOGY**

# INTERNATIONAL JOURNAL OF INNOVATIVE RESEARCH

IN SCIENCE | ENGINEERING | TECHNOLOGY

Volume 12, Issue 4, April 2023

**ISSN** INTERNATIONAL  
STANDARD  
SERIAL  
NUMBER  
INDIA

Impact Factor: 8.423

9940 572 462

6381 907 438

[ijirset@gmail.com](mailto:ijirset@gmail.com)

[www.ijirset.com](http://www.ijirset.com)



# User Centered Website Using Customer Segmentation

Vijay Shinde, Nikhil Ransing, Satywan Ransing, Srijan Chitranshi, Prof. A. S. Shinde

Department of Information Technology, Sinhgad College of Engineering Pune, India

**ABSTRACT:** We no longer operate our business based on presumptions or under the idea that all of our customers have comparable needs. In the quickly changing corporate world of today, we need to have a high customer retention rate and grow revenue. For this, customer segmentation is a tried-and-true tactic. By segmenting their markets, businesses can make better use of their marketing dollars. They can also get an edge over competing businesses and, most essential, demonstrate that they have a superior understanding of the needs and wants of their clients. Customer segmentation is the practise of classifying your customers based on shared characteristics, such as behaviours or demographics, in order to more effectively promote to them.. In order to keep customers and make money from them, customer segmentation has become very popular in recent years. In the study that follows, customers of various organizations are categorized according to their behavioral characteristics, such as spending and income. By taking behavioral factors into consideration, these methods are more effective than others. Customers are categorized based on behavioral characteristics using a machine algorithm known as the k-means clustering method. Using such clusters, the business can target certain clients and offer the material to them through advertising campaigns and social media platforms that they are truly interested in.

**KEYWORDS:** User Interest, Segmentation, Machine Learning, Data analysis.

## I. INTRODUCTION

In order to keep customers and make money from them, customer segmentation has become very popular in recent years. In the study that follows, customers of various organisations are categorised according to their behavioural characteristics, such as spending and income. By taking behavioural factors into consideration, these methods are more effective than others. Customers are categorised based on behavioural characteristics using a machine algorithm known as the k-means clustering method. Using such clusters, the business can target certain clients and offer the material to them through advertising campaigns and social media platforms that they are truly interested in.

One of the most crucial things a marketer can do to improve the chances of a successful marketing strategy is to divide the target audience into smaller categories. Companies today are focusing on the wrong types of consumers. It can be very frustrating when there is no return on investment (ROI). This approach separates clients from various businesses and categorises them based on behavioural traits like spending and income. By taking behavioural factors into account, these strategies are more effective than others. We are providing a fantastic product or service, and we are doing ethically.enhancing our website's SEO, regularly publishing new material, contacting our database via email, being active on social media, and running online ads. Still, there are no profits. Our algorithm will classify clients into groups based on how they are similar to one another. Through individualised material catered to the relevant niche, sales will increase.

## II. RELATED WORK

A fresh statistic called the coincident monthly peak contribution (CMPC), which quantifies how much each user contributes to the peak demand of the system, has been put forth [1].

Provide specific instructions on how to develop a behavioral-based segmentation model that can be used to identify African credit cards based on their shopping patterns [2].

The elastic net penalty clustering method should be used to extend the regularised k-means clustering strategy with L1-norm for independent cases, with a focus on correlated variables [3].

To develop a consistent data mining approach for evaluating and establishing client profiles for video on demand (VoD) services [4].



Features of online donors in Taiwan were studied by using a sophisticated clustering technique to identify different donor segments [5].

Specify and outline the procedures that can be used to create a behavioural segmentation model that distinguishes African credit cards based on their purchasing data [6].

### **III. PROPOSED METHODOLOGY**

Customers are segmented Customer segmentation is the process through which you separate your consumers into groups based on shared traits, such as behaviours or demographics, in order to market to those customers more successfully. There are various segmentation elements that need careful consideration. Two categories of customer segmentation are distinguishable:

Demographics are often the main emphasis of the consumer understanding process. This will take into account things like:

- Age
- Geography
- Urbanization – are they city or rural?
- Income
- Relationship status
- Family
- Job type Segmenting customers based on what they do you can also segment customers based on how much they spend (share of wallet), how often, and what products (this allows you to see how much you can increase spend). This is more behavior focused.

Breaking this down even further, behavior can vary and you might want to look to separate as follows:

- Basket size
- Share of wallet
- Tenure (how long they stay with you)
- Long Term loyalty (a function of share of wallet and tenure)

#### **Algorithm**

##### **A. K-means clustering**

One unsupervised learning approach for clusters is K-Means. Organizing the pixels in the image into clusters based on shared attributes is called clustering. The number of clusters,  $k$ , must first be defined in the  $k$ -means method. The centre of the  $k$ -cluster is then randomly picked. Each pixel's distance from the centroid of each cluster is determined. The distance might have a straightforward Euclidean function. The distance formula is used to compare each cluster centre to a single pixel. The pixel is transferred to a certain cluster with the shortest distance out of all of them. The centroid is then recalculated. Once more, every pixel is compared to every centroid. Until the centre converges, the procedure continues.



Flowchart of k-means algorithm

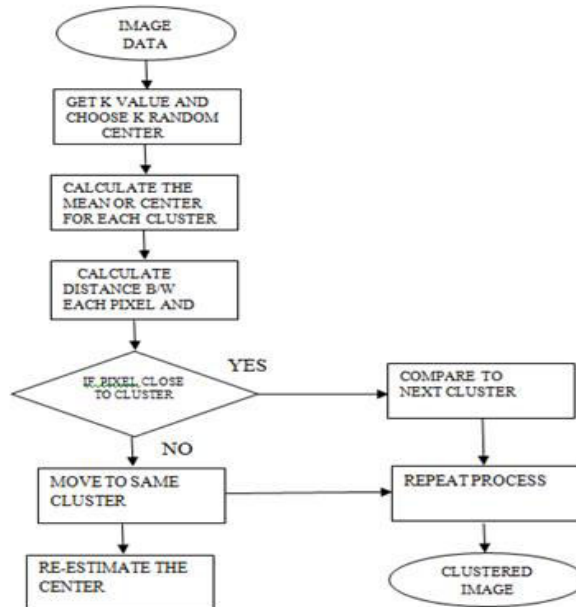


Fig: K-means flow chart

#### IV. OPEN ISSUES

Today's businesses often operate online, therefore internet marketing is essential to keep customers. But, because of this, businesses should handle each customer equally and employ comparable marketing techniques. Because marketing methods are ineffective and, by ignoring consumers' individuality, anger them, customer segmentation is becoming more and more popular as a technique to solve this problem. Customer segmentation is the practise of grouping customers of a business based on demographic and behavioural traits, such as age, gender, and marital status. Behavioural traits include the kind of products customers order and their annual income. Since they emphasise individuality and enable accurate segmentation, behavioural elements are a better method of consumer segmentation than demographic data are since customers of the same age groups may have different interests. To speed up business growth, the suggested system targets the right clients. The project's goal is to increase sales by producing tailored material that appeals to each demographic.

#### V. CONCLUSION

In order to identify the target customers of businesses utilising various customer segmentation strategies, a number of machine learning algorithms will be deployed in this project. We will recommend complementary products to new users on the product's website based on that analysis.

The K-means clustering technique is recommended as a good fit for this approach. This study also reveals that segmenting customers based on behavioural traits is a better approach for solving the existing customer segmentation challenge. Using parameters like total spending and annual income, customers are segmented based on the company's customer data using the K-means clustering machine learning method.

#### REFERENCES

- [1] G. Lefait, T. Kechadi, "Customer Segmentation Architecture Based on Clustering Techniques" Digital Society, ICDS'10, Fourth International Conference, 10-02-2010.
- [2] S. Ozan, "Increasing system performance in machine learning by using multiprocessing," in 2018 26th Signal Processing and Communications Applications Conference (SIU), May 2018



- [3] S. Haben, C. Singleton, and P. Grindrod, "Analysis and clustering of residential customers energy behavioral demand using smart meter data," *IEEE Trans. Smart Grid*, vol. 7, no. 1, pp. 136–144, Jan. 2016
- [4] K. Chen, J. Hu, and Z. He, "Data-driven residential customer aggregation based on seasonal behavioral patterns," 2017 IEEE Power Energy Society General Meeting, pp. 1–5, Jul. 2017.
- [5] C.-H. Cheng and Y.-S. Chen, "Classifying the segmentation of customer value via RFM model and RS theory," *Expert Syst. Appl.*, vol. 36, no. 3, pp. 4176–4184, Apr. 2009.
- [6] C.-C.-H. Chan, C.-B. Cheng, and W.-C. Hsien, "Pricing and promotion strategies of an online shop based on customer segmentation and multiple objective decision making," *Expert Syst. Appl.*, vol. 38, no. 12, pp. 14585–14591, Nov. 2011.
- [7] R.-S. Wu and P.-H. Chou, "Customer segmentation of multiple category data in e-commerce using a soft-clustering approach," *Electron. Commerce Res. Appl.*, vol. 10, no. 3, pp. 331–341, May 2011. VOLUME 9, 2021 48411 H.-H. Zhao et al.: Extended Regularized K-Means Clustering Approach for High-Dimensional Customer Segmentation
- [8] M. O'Brien, Y. Liu, H. Y. Chen, and R. Lusch, "Gaining insight to B2B relationships through new segmentation approaches: Not all relationships are equal," *Expert Syst. Appl.*, vol. 161, Dec. 2020, Art. no. 113767.
- [9] H. Brotspies and A. Weinstein, "Rethinking business segmentation: A conceptual model and strategic insights," *J. Strategic Marketing*, vol. 27, no. 2, pp. 164–176, Feb. 2019.
- [10] F. Liu, "3D block matching algorithm in concealed image recognition and E-commerce customer segmentation," *IEEE Sensors J.*, vol. 20, no. 20, pp. 11761–11769, Aug. 2020.
- [11] J. Griffin, *Customer Segmentation: Divide and Prosper*. IQ Magazine. San Jose, CA, USA: Cisco, Mar./Apr. 2003.
- [12] Z. You, Y.-W. Si, D. Zhang, X. Zeng, S. C. H. Leung, and T. Li, "A decision-making framework for precision marketing," *Expert Syst. Appl.*, vol. 42, no. 7, pp. 3357–3367, May 2015.



SJIF Scientific Journal Impact Factor

Impact Factor: 8.423



# INTERNATIONAL JOURNAL OF INNOVATIVE RESEARCH

IN SCIENCE | ENGINEERING | TECHNOLOGY

 9940 572 462  6381 907 438  [ijirset@gmail.com](mailto:ijirset@gmail.com)



[www.ijirset.com](http://www.ijirset.com)

Scan to save the contact details