



e-ISSN: 2319-8753 | p-ISSN: 2347-6710

# IJRSET

International Journal of Innovative Research in  
**SCIENCE | ENGINEERING | TECHNOLOGY**

# INTERNATIONAL JOURNAL OF INNOVATIVE RESEARCH

IN SCIENCE | ENGINEERING | TECHNOLOGY

Volume 12, Issue 3, March 2023

**ISSN** INTERNATIONAL  
STANDARD  
SERIAL  
NUMBER  
INDIA

Impact Factor: 8.423

9940 572 462

6381 907 438

[ijirset@gmail.com](mailto:ijirset@gmail.com)

[www.ijirset.com](http://www.ijirset.com)

# Brain Tumor Detection Using Image Processing

V.C.Sanap<sup>1</sup>, Neha Gunjal<sup>2</sup>, Shruti Jadhav<sup>3</sup>, Anuja Sutar<sup>4</sup>, Tanuja Sutar<sup>5</sup>

Lecturer, Dept. of Computer Engineering, A.I.S.S.M.S. Polytechnic Pune, Maharashtra, India<sup>1</sup>

Student, Dept. of Computer Engineering, A.I.S.S.M.S. Polytechnic Pune, Maharashtra, India<sup>234</sup>

**ABSTRACT:** Artificial Intelligent has been in countless use when it comes to day to day life. Computer science defines AI research as the study of intense agents. Every In almost any direction one turns today, some form of computer-based information processing technology intrudes, whether to the individual significantly or not. In this paper, we offer a brain tumor segmentation and classification method for multi-modality magnetic resonance image scans.

The data from multi-modal brain tumor segmentation encounter are utilized which are co-registered and skill stripped, and the histogram matching is performed with a reference volume of high disparity. We are detecting tumor by using preprocessing, segmentation, feature extraction, optimization and lastly sorting after that preprocessed images use to classify the tissue. We performed a leave-one out cross-validation and achieved 88 Dice overlap for the complete tumor region, 75 for the core tumor region and 95 for attractive tumor region.

**KEYWORDS:** Image Processing, Pre-Processing, Segmentation, MRI Scanner, CNN Process, Brain Tumor, Morphological Stage.

## I. INTRODUCTION

We do not need to do surgery if the tumour is small, not creating any symptoms, and not immediately dangerous. The tumour can be observed over time to make sure it doesn't enlarge or cause problems. Active monitoring is the practise in question. Detection of the brain tumor margins in primary brain tumors is one of the most important problems in neurosurgery.

Brain Tumor is one of the rapid life-threatening illnesses challenging millions of people. A Brain Tumor Detection and Classification system is essential to ensure early Detection and Classification of Tumor. Since Wrong identification leads to Terrible and Fatal results, the classification and segmentation techniques should provide High Level Precision while performing Tumor classification. These Techniques should be effective for Real-Time applications.

The Growing urge for saving Time is equally significant as the Desired Accuracy Level of the Result. The Irresistible Need for a Full-fledged analysis on Comparative base marks its Significance. To keep pace with the above-mentioned challenges, this Research concentrates on the Asset and Prowess of Representative Techniques for Brain Tumor classification. This can advantage Radiologists as they ease work through the support of computer-based systems in developing New Techniques for ailing Health care correlated problems.

The use of image processing learning in detection has been an interesting topic now days. We get inspired of existing system. we have to match user object with database image using Longitudinal gray level dependencies method. In that system first we have pre-processing on that images then select feature extraction and comparison brain with database and get the result.

## II. RELATED WORK

Medical image processing system used to process MRI images. Image processing altering physical image into equivalent digital image and extract the details from the digital image. Image processing is any form of indication processing in which input as an image like photograph or video and the output may be either an image or a set of characteristics or limitations related to the image. As a result, very suitable differences between abnormal and normal but compressed tissue can be made more obvious. BRAMSIT images need to be combined with a regular database of

young bud researchers to accurately examine the clinical results of the images. In order to detect tumors and authenticate the results, a few databases available publically and help the investigate community to come up with better algorithms. Among those BRATS dataset, Fig share and kaggle plays a major role with huge image dataset. Fig share[5] consisting of 3064 T1-weighted contrast-enhanced images with three kinds of brain tumor such as normal, benign and malignant. The images can be down overloaded along with their ground truth images in BLACK & WHITE (BW) format. The dataset consists of tumor mask, tumor edge, and original image in .MAT file. The space occupied by the database is more. Some of the model dataset images .

**PROPOSED SYSTEM ARCHITECTURE:**

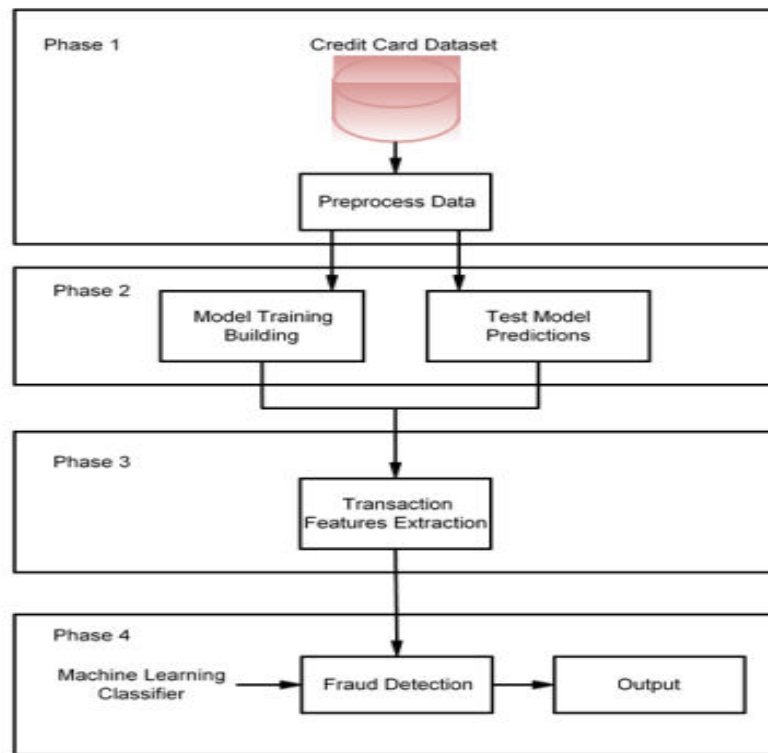


Fig 1. Proposed System Architecture

**III. METHODOLOGY**

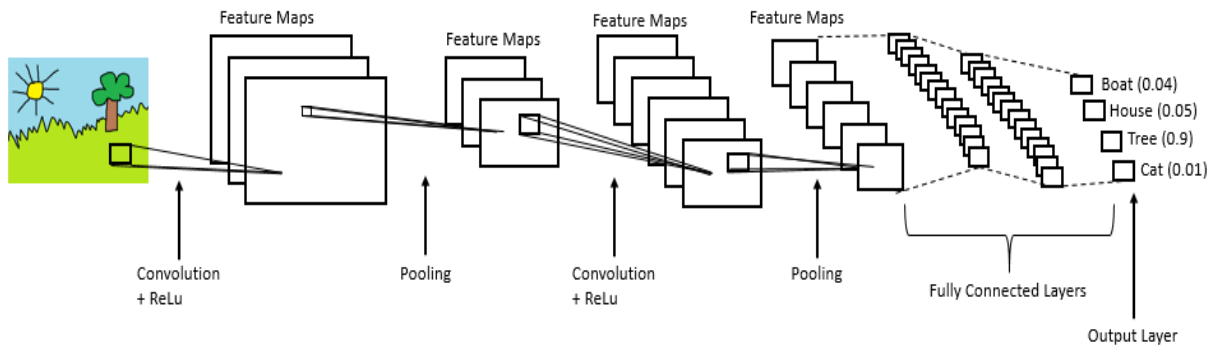
**(CNN) Convolutional Neural Network:-**

A convolutional neural network (CNN or convnet) is a subset of machine learning. It is one of the several types of artificial neural networks which are used for changed applications and data types. A CNN is a kind of network architecture for deep learning algorithms and is exactly used for image recognition and tasks that include the processing of pixel data. There are other types of neural networks in deep learning, but for classifying and recognizing items, CNNs are the network architecture of choice. This makes them highly appropriate for computer vision (CV) tasks and for applications where object recognition is vital, such as self-driving cars and facial recognition.

The CNN is another type of neural network that can discover key data in both time series and image data. For this reason, it is extremely valuable for image-related tasks, such as image recognition, object organization and pattern recognition. To classify patterns within an image, a CNN leverages values from linear algebra, such as matrix multiplication. CNNs can also categorize audio and signal data.

A CNN's architecture is parallel to the connectivity pattern of the human brain. Just like the brain consists of billions of neurons, CNNs also have neurons decided in a specific way. In fact, a CNN's neurons are arranged like the brain's frontal lobe, the area answerable for processing visual stimuli. This preparation ensures that the entire visual field is enclosed, thus avoiding the piecemeal image processing tricky of traditional neural networks, which must be nursed images in reduced-resolution pieces. Linked to the elder networks, a CNN delivers improved performance with image inputs, and also with speech or audio signal participations.

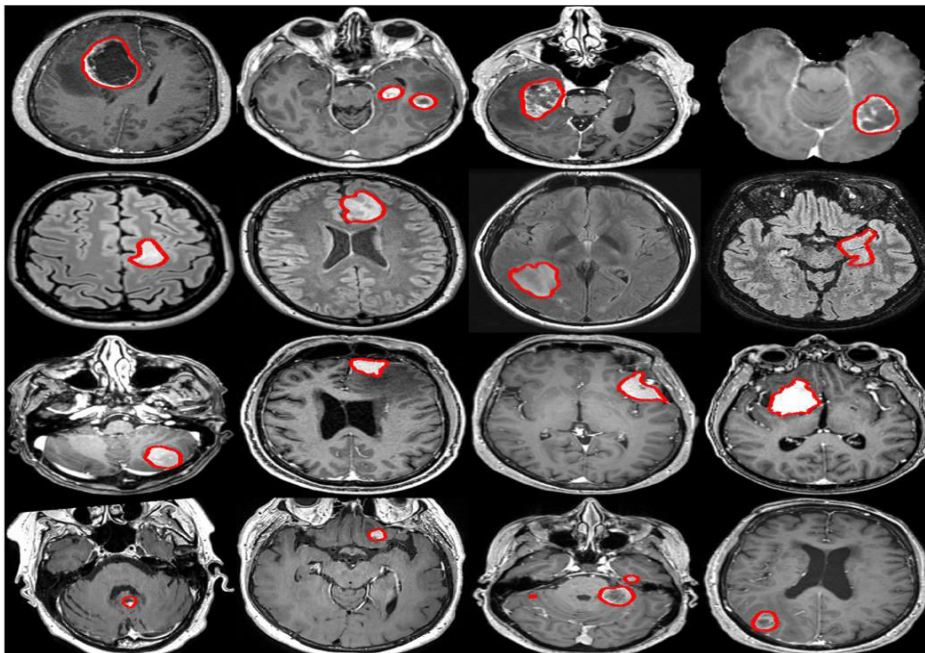




### BRAIN TUMOR CLASSIFICATION:

Brain tumor detection and classification is that the most worrying and tedious task within the space of medicative image getting ready. Magnetic resonance imaging (Magnetic Resonance Imaging) may be a medicative procedure, typically approved by the medical specialist for illustration of internal structure of the build with no surgery. Magnetic resonance imaging delivers long information regarding the human delicate tissue, that helps within the conclusion of brain tumor. Precise segmentation of magnetic resonance imaging image is basic for the conclusion of brain tumor by laptop supported clinical device. This paper is concentrated towards the look of Associate in Nursing best and additional correct approach for the detection of neoplasm from brain magnetic resonance imaging scans and if it confirms the presence of tumor then it's focused on evaluating its stage, i.e., benign, or malignant. We've through an experiment shown that our projected methodology features a larger accuracy than different existent strategies for classifying tumor kind to be either as Malignant or Benign.

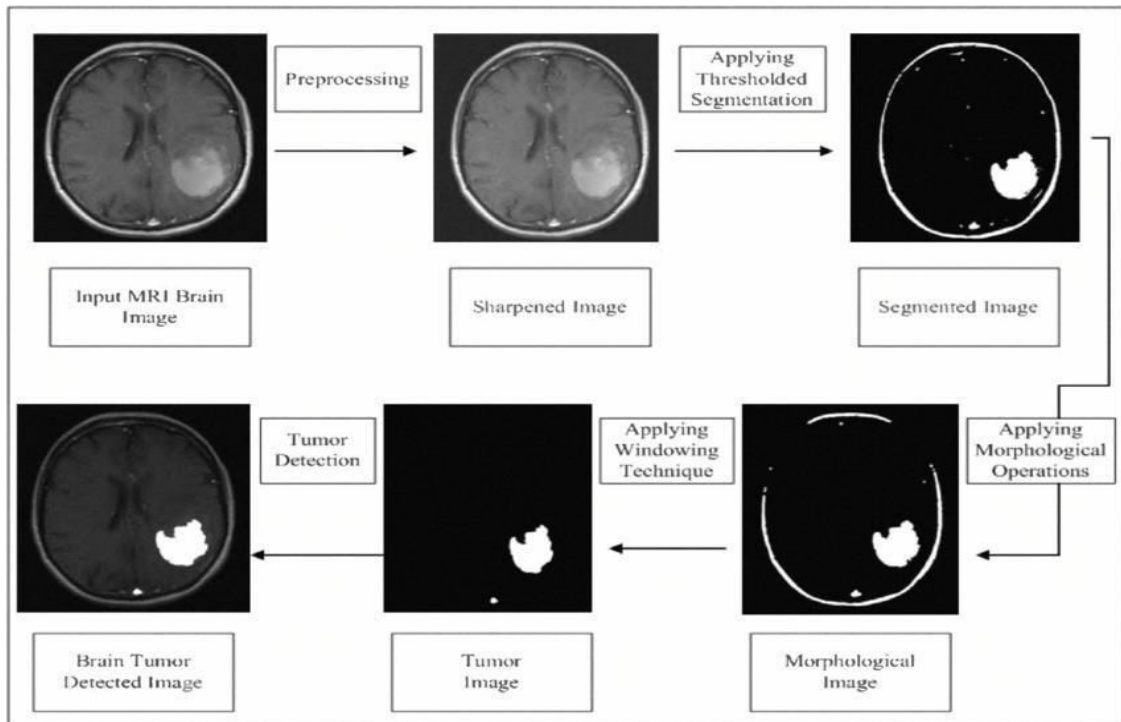
The Brain tumor will be classify by using CNN technology in Image Processing. It will take very less time to find tumor which is occurred in brain. Below is the Diagram of Tumor X-rays.



### BRAIN TUMOR DETECTION PROCESS:

An image represented as associate in nursing  $N \times M$  (in case of greyscale images) or  $N \times M \times 3$  (in case of color images) matrix in memory, with the very entry representing the intensity value of a element. In image steganography, a message is fixed into an image by fixing the values of some pixels, that area unit selected by an encryption algorithm. The recipient of the image should evoke of the continuous algorithm in order to realize which pixels he or she must select to extract the message. Detection of the message at breaks the cover image is done by the technique of

steganalysis. This could done through judgement with the cover image, bar chart(histogram) trickery, or noise detection. Whereas efforts area unit being participated with developing new algorithms with a bigger degree of immunity against such spells, efforts are also being devoted towards up existing algorithms for steganalysis, to sight the exchange of secret data between terrorist sorillegal components.

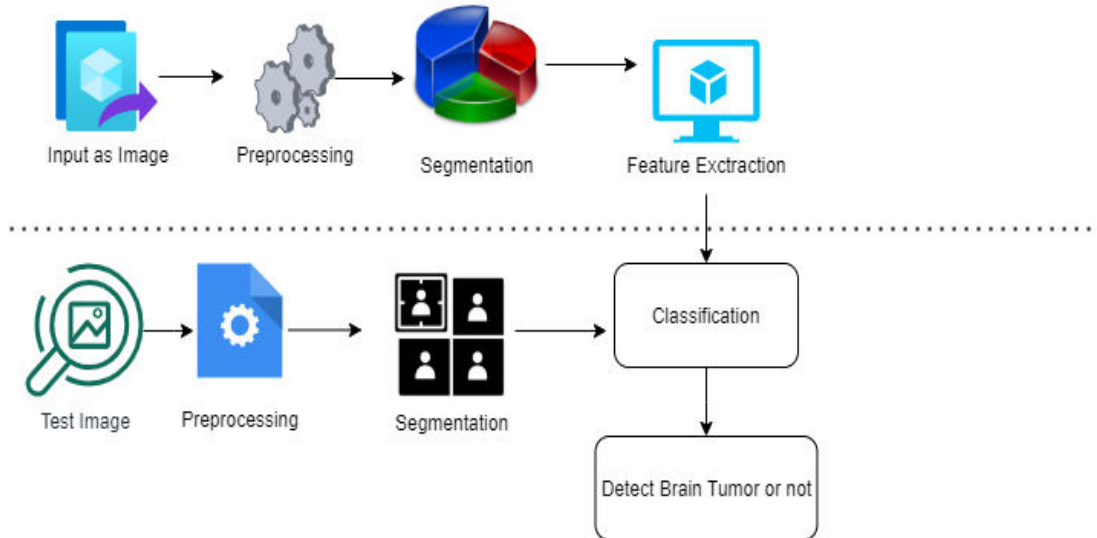


#### IV.ACTUAL RESULTS

Build an app-based user interface in hospitals which allows doctors to easily regulate the impact of tumor and suggest treatment accordingly Since presentation and complication of ConvNets depend on the input data representation we can try to forecast the location as well as stage of the tumor from Capacity based 3D images. By creating three dimensional (3D) structural models from separate patients, training, planning and computer guidance during surgery is enhanced.

Improve testing accurateness and computation time by using classifier improving techniques like using more number images with more data expansion, fine-tuning hyper parameters, training for a longer time i.e., using more epochs, adding more fitting layers etc. Classifier boosting is done by building a classical from the training data then creating a second model that efforts to correct the errors from the first model for faster prognosis. Such techniques can be used to raise the accuracy even advanced and reach a level that will allow this tool to be a noteworthy asset to any medical facility dealing with brain tumors.

**BLOCK DIAGRAM :**



**V. CONCLUSION**

This paper obtainable an algorithm to hierarchically classify the tumor into three regions: entire tumor, core tumor and enhancing tumor. Intensity, intensity difference, neighborhood data and ripple features are extracted and utilized on multimodality MRI scans with numerous classifiers. The use of SVM and CNN classifier has increased the classification accuracy as evident by quantitative results of our proposed method which are similar or higher than the state of the art.

In this proposed work dissimilar medical images like MRI brain cancer images are taken for detecting tumor. The proposed approach for brain tumor detection supported convolution neural network classifies into multi-layer perceptron neural network. The proposed tactic utilizes a combination of this neural network technique and consists of several steps with training the system, pre- processing, implementation of the tensor flow, classification. In the upcoming, we'll take an massive database and check out to offer more accurateness which can work on any sort of MRI brain tumor.

**REFERENCES**

1. E. Holland, "Glioblastoma multiforme: the terminator," Proceedings of the National Academy of Sciences, 97(12), pp.6242-6244.
2. K. Urbanska, J. Sokołowska, M. Szmidt, and P. Sysa, 2014. Glioblastoma ´ overview. Contemporary oncology, 18(5), p.307.
3. G. Anandgaonkar, G. Sable, 2014. Brain tumor detection and identification from T1 post contrast MR images using cluster based segmentation. International Journal of Science and Research, 3(4), 814-7.
4. M. Sujana, N. Alam, S. Abdullah, M. Jahirul, 2016. A Segmentation based Automated System for Brain Tumor Detection. International Journal of Computer Applications, 153(10), 41-49.
5. U. İlhan, A. İlhan, 2017, 9th International Conference on Theory and Application of Soft Computing, Computing with Words and Perception, ICSCCW.
6. The Cancer Imaging Archive, 2017. REMBRANDT. <https://wiki.cancerimagingarchive.net/display/Public/REMBRANDT>
7. C. Shannon, 1948, A mathematical theory of communication, The Bell Syst. Tech. J. 27, pp. 379-423.
8. G. Blanchet, and M. Charbit, 2006. Digital signal and image processing using MATLAB (Vol. 4). London: Iste.
9. Li, Y. Li, T. Wang, and W. Niu, 2015, October. Medical image segmentation based on maximum entropy multi-threshold segmentation optimized by improved cuckoo search algorithm. In 2015 8th International Congress on Image and Signal Processing (CISP) (pp. 470-475). IEEE.
10. K. Win, S. Choomchuay, K. Hamamoto, M. Raveesunthornkiat, "Detection and Classification of Overlapping Cell Nuclei in Cytology Effusion Images Using a Double-Strategy Random Forest", Applied Sciences, 8(9), p.1608, 2018



**INNO SPACE**  
SJIF Scientific Journal Impact Factor  
**Impact Factor: 8.118**



**ISSN** INTERNATIONAL  
STANDARD  
SERIAL  
NUMBER  
INDIA



# INTERNATIONAL JOURNAL OF INNOVATIVE RESEARCH

IN SCIENCE | ENGINEERING | TECHNOLOGY

9940 572 462 6381 907 438 [ijirset@gmail.com](mailto:ijirset@gmail.com)



[www.ijirset.com](http://www.ijirset.com)

Scan to save the contact details