



e-ISSN: 2319-8753 | p-ISSN: 2347-6710

# IJRSET

International Journal of Innovative Research in  
**SCIENCE | ENGINEERING | TECHNOLOGY**



# INTERNATIONAL JOURNAL OF INNOVATIVE RESEARCH

IN SCIENCE | ENGINEERING | TECHNOLOGY

Volume 12, Issue 5, May 2023

**ISSN** INTERNATIONAL  
STANDARD  
SERIAL  
NUMBER  
INDIA

Impact Factor: 8.423

9940 572 462

6381 907 438

[ijrset@gmail.com](mailto:ijrset@gmail.com)

[www.ijrset.com](http://www.ijrset.com)



# Revolutionizing Domestic Waste Treatment and Management; Sustainable Approaches for A Cleaner Future

<sup>1</sup>Praveen Kumar Yadav, <sup>2</sup>Rahul Sharma, <sup>3</sup>Lokesh Kumar Gurjar, <sup>4</sup>Prasun Kumar,  
<sup>5</sup>Rahul Choudhary, <sup>6</sup>Mr.Ashish Boraida

B.Tech Student, Department of Civil Engineering, Jaipur Engineering College & Research Centre, Jaipur, India<sup>1-5</sup>

Assistant Professor, Department of Civil Engineering, Jaipur Engineering College & Research Centre, Jaipur, India<sup>6</sup>

**ABSTRACT:** Solid garbage is the unwanted, harmful and wasted substance arising from day-to-day civic events. Management of the solid wastes can be described as the methodology of managing solid waste generation, storage, collection, transport, treatment and disposal. A country's growth status can be defined in several forms. As regards its effect on solid waste management, the growth status of the publication is classified according to the availability of economic capital and the degree of industrialization development. The status of economic growth is determined by the new economic environment position (recession versus prosperity). The level of industrialization is measured by the degree to which technical tools are mechanized and usable. The terms "developed" and "industrialization" are frequently used interchangeably, whether justified or not. Because of regional fluctuations in the degree of growth within each region, imposing a clear structural definition in solid waste management is problematic. In a developed country, for example, a large metropolitan population (usually the province's capital and surrounding area) may be growing at a rate far higher than the rest of the country. Fortunately, these gatherings are not entirely immune to the constraints imposed by the state of the nation. It is important to keep in mind that while the information provided in this paper specifically refers to agricultural nations, some of it can actually allude to a changing nation or even a high-level or constructed planet. The ties between humans and the environment are a striking oddity. The specific dietary requirements, as well as our asset use rates, the amount of trash we produce, and the technology used in various applications, determine the planet's ability to support people. We have essentially outgrown the planet's transporting power due to population growth and evolving asset usage patterns.

**KEYWORDS:** Industrialization, prosperity, recession, solid garbage, Waste Management, landfill, Environment

## I. INTRODUCTION

The Earth's natural reserves are no longer sufficient to meet human demands and commercial activities. Global warming has revealed the danger of exceeding the planet's ability to consume our trash. However, the implications of increasing the availability of critical materials, as well as the extent to which we have already advanced in this chain, are not well understood and are instead viewed from an economic and manufacturing standpoint. The planet's ability to eat our trash is a major element driving the development of waste management systems [1]. Landfilling is possibly the oldest method of waste management. Until the 1970s, landfilling was used to dispose of waste in any convenient location without regard for health, welfare, environmental conservation, or cost efficiency. However, the situation has changed, and not because of the comprehension and value of waste management, as well as other issues [2]. The scarcity of landfill capacity in urban areas is becoming a worrisome and serious issue. The dilemma creates political incentives to divert garbage to a variety of other treatment procedures. Currently, countries' sophisticated waste that ends up in landfills. In Hong Kong, for example, the programme was motivated by a lack of landfill capacity rather than a lack of resource use.

In terms of recycling, rising waste-to-energy systems and developments in technologies and emissions reduction techniques have further reduced the volumes entering landfills, especially Europe, but it may become a model for other countries in the future. It specifically refers to areas where enough landfill capacity is needed. A problem, as well as those areas where these remedies have yet to be fully implemented. It is also expected that in the near future, better and more ecologically friendly product design will be achievable, transforming the face of energy harvesting system.

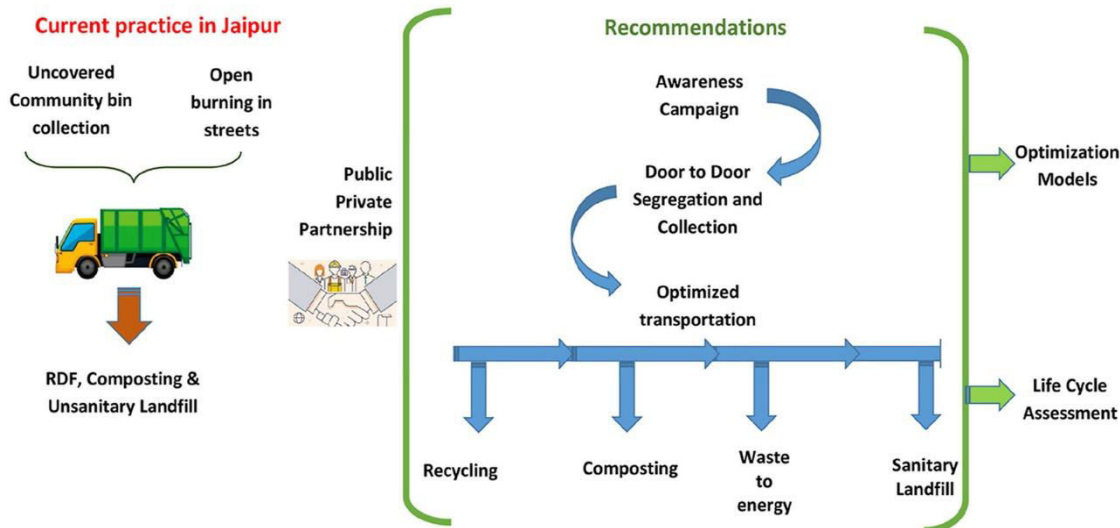


Landfilling is inevitable given the hazards, and the ultimate inert fraction must always be buried. In order to reduce air and water pollutants, landfill construction, upkeep, and management are continually being researched and improved [3]. The build-up of landfill gas presents an opportunity to cut greenhouse gas (GHG) emissions. However, the economics of electricity recycling and garbage extraction still need to be demonstrated effectively. Since most of the gas is methane and only a small amount is partially oxidised in the landfill, the average methane content of landfill gas is around fifty percent. Even with an effective gas collection system, waste produced in landfills is lost to the environment [4]. Due to the low methane content of the waste gas, it is necessary to perform essential upgrades that jeopardise the benefits of collecting landfill gas. The term “solid waste management “describes how solid waste is stored and disposed of. In addition, offers recycled alternatives for items that don’t belong in waste or the trash. Trash, or solid waste, has been an issue in towns and rural places for as long as people have lived there. The method of managing solid waste in solid gaseous and liquid waste disposal [5]. It is regarded as a practical means of getting rid of some harmful waste items (like organic medical waste). Due to issue with gaseous pollution, incinerating garbage is a contentious waste disposal method. Recycling garbage has many benefits, but the main one is to safeguard both the environment and the general population. Waste and garbage can contaminate the water and air. It is also known that decomposing trash emits toxic chemicals that interact with the air around it and can give individuals lung problems.

Thermochemical characteristics are used to categorise and compare solid industrial waste. Municipal MSW Is often classified into 6 categories food waste, wood waste, pulp, textiles, plastics and rubber. Within each grouping, products can be further subdivided [6]. Through recycling and, where possible, reusing waste, regulated waste will benefit society economically and socially. The Primary components of solid waste treatment include on site management, processing, and storage; garbage collection; Waste management transfer and transport; reduction; and final disposal. Trash, building rubble, industrial garbage, sewage over waste disposal sludge, over air quality control facilities are examples of solid waste [7].

Urban solid waste management procedures from the time of generation until final disposal be broken down into the six functional components:

- Waste production
- Garbage storage
- Garbage collection
- Waste transportation
- Waste segregation
- Waste disposal





**II. RELATED WORK**

**Taweesan et al (2017):** Due to increasing generation of municipal solid waste and lack of understanding about the different stages of municipal solid waste management (MSWM) practices, several cities in Asian countries and elsewhere are facing environmental and health problems caused by improper municipal solid waste management. The collected MSW has been found to be improperly managed, causing environmental pollution and public health problems. In this respect, many Asian countries are facing a number of serious challenges in environmental and health impacts. Effective MSWM practices were tested in four cities in Asian countries and the efficiency was checked with the four indicators which were collection efficiency, treatment efficiency, benefit/cost ratio, and social satisfaction.

**Ferronato et al (2019):**

Inclusion of the informal sector can be considered a viable way for improving the recycling rate and reducing the waste inflow into final disposal sites in developing countries, due to low technological requirements and economic investments. It was observed that plasma arc gasification technology is more effective than other options due to its numerous advantages such as the energy production of 816 KWh/ton of MSW (which is higher than that of other thermal technologies) and its ability to treat MSW with minimal effects on the environment unlike other technologies

**III. METHODOLOGY**

**3.1 Solid Waste Collection:**

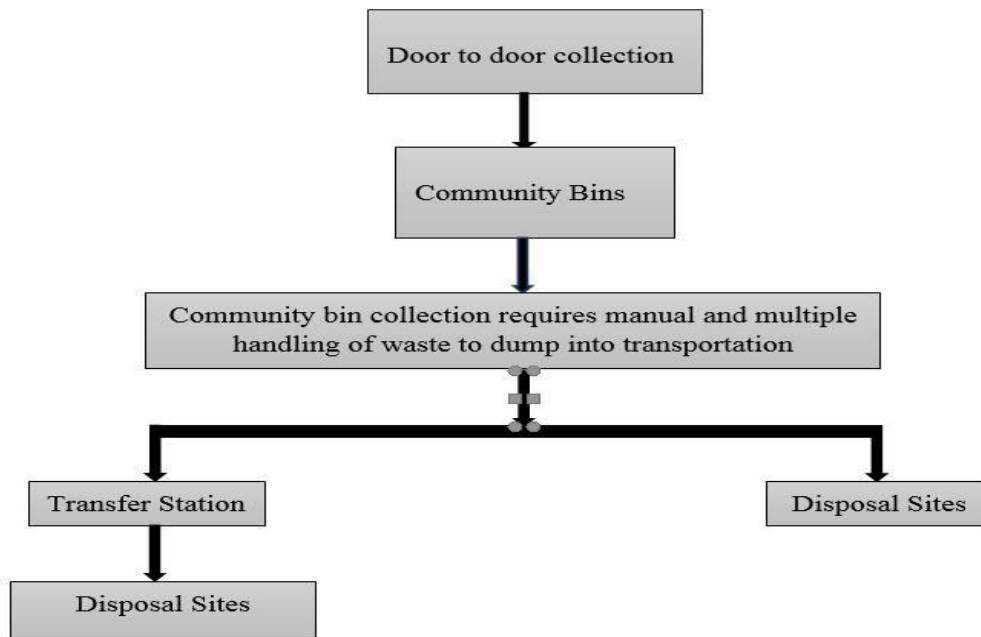


Figure 1: Flow chart illustration collection of solid waste

**3.2 Integration of waste management:**

A framework For the design and development of contemporary waste management and disposal system as well as the analysis and improvement of existing waste disposal system is known as Integrated waste management. It is crucial to consider both technical and non-technical components of management schemes when applying this term. Currently, non-technical Factors like public involvement And awareness are necessary and essential for the successful adoption of many recycling and recovery schemes due to the introduction of new legislation, laws, and the waste management industry as an enterprise. A Famous example is the widespread opposition to incineration. Services over the world, owing partly to the notion that incinerators are the source of dioxins, which also highlights incinerators' efficacy In lowering waste amount and waste disposal levels. As a result, in managing contaminants in the atmosphere, improvements in emission abatement devices, and gasification processes.



More importantly, Including the public in such studies and enlightening them about the needs and concerns of waste treatment and disposal in a specific region Or country is vital for the effective implementation of newest treatment systems. Cooperation between the state, business, and informal sectors is evident today, and it is best to organise environmental education and public engagement through one of these networks for successful implementation.

.As previously indicated, the planet’s carrying capacity is constantly under assault. The price of economic activity is Environmental Protection. As a result, resources are increasing, but competition is increasing as the environment and consumption change. As the new waste management system according to the elite, the first step towards accomplishing trash Reduction is citizen engagement and altering their perspective, although Recycling and reuse frequently require technical aid. The emphasis is On energy and nutritional recovery. Science, if not adequately addressed, may become the focus off NIMBY syndrome .

Modern integrated waste disposal is thus a temporal requirement, whereas sustainability must be included in all materials while taking material availability and demand into account. it is unavoidable that garbage has become a tool, and it is the responsibility of individuals to use it responsibly. As Previous experience has shown, If individuals truly discover the planet, it is not convenient, but it is note as difficult as “our home”.

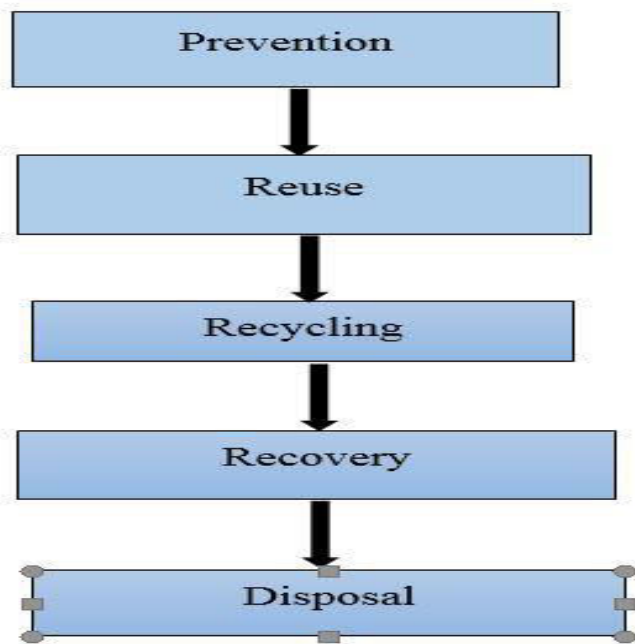


Figure 2: Block diagram illustration solid waste management

The hierarchy Of waste management has undergone modifications in the last 10 years, and today, recycling and recovery are prioritised Over landfilling [15]. Figure 2 Clearly illustrates the management of solid waste and the sustainable use of resources.

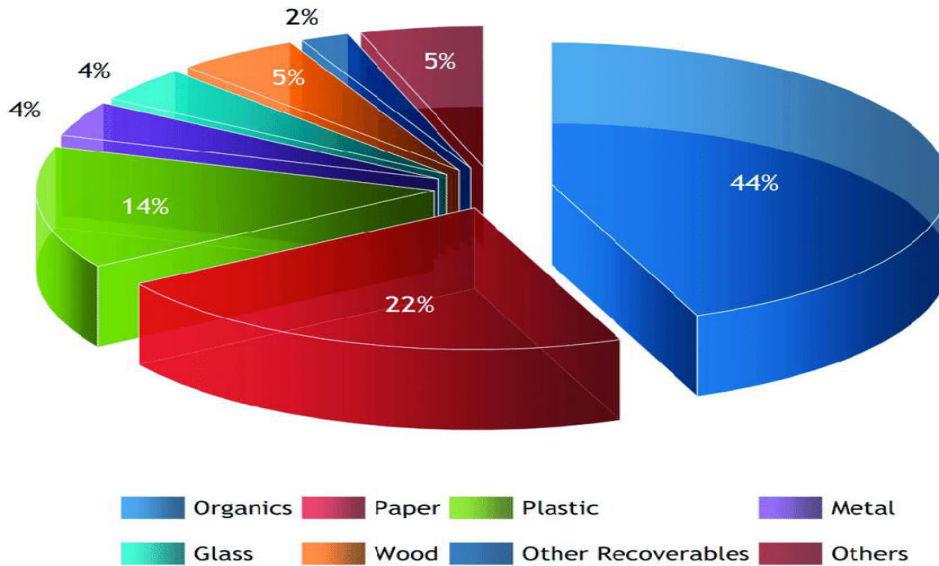


Figure 3: Composition of solid waste in India (dry season)

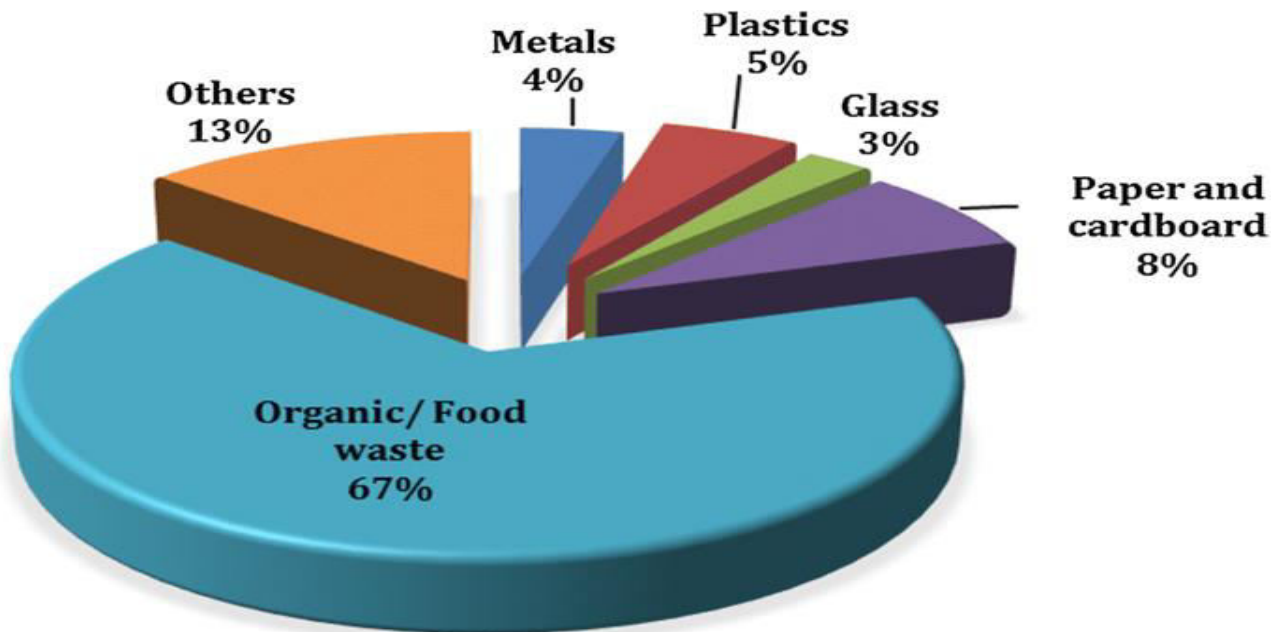


Figure 4: Composition of solid waste in India (wet season)

Both the figures mentioned above, i.e. Figure 3 and 4 depicts the composition of the municipal solid waste in India (dry & wet season respectively).

**3.3 DISPOSAL OF SOLID WASTE :**

1. **COMPOSTING:**Any kind of biodegradable trash, including that from hotels, homes, and commercial markets, as well as Vegetable waste and leaf litter, is composted by vermin. Each vermin composting rack is built of steel and is 6.21m × 1.56m × 0.62m. It calls for two month.
2. **LAND FILLING:**Waste is kept in a nearly five-acre on top of the hill. We only utilise inorganic material for dumping and landfilling.
3. **VERMI – COMPOSTING:**Earthworms And microorganisms are used in the vermicomposting process, which eliminates hazardous waste from sewage and converts it into a product that may be used in agriculture. Compared to other remodelling techniques, this eco-friendly one is efficient and cutting-edge. Enzymatic Processes reduce harmful metals in the earth’s crust, Indicating that antitechnology a suitable method for extracting heavy metals from mud or industrial waste. Conclusion: Vermicomposting meet transform sludge from the sugar industry into nutrient-rich agricultural applications with lower toxicity.
4. **BIO – METHANATION:**Anaerobic digestion, also known as “bio-methanation”, is The process of turning organic matter into trash, methane, and composed by microbial activity again there is no air present. Due to the high organic content of their solid waste, agricultural-based enterprises may treat it using bio-methanation, Which yields valuable by products like biogas and rich fertilisers.
5. **INCINERATION :** The burning of waste items is referred to as “Incineration”. The trash is cooked at extremely high temperatures and turned into materials such as heat, gas, steam, and ash using this procedure.

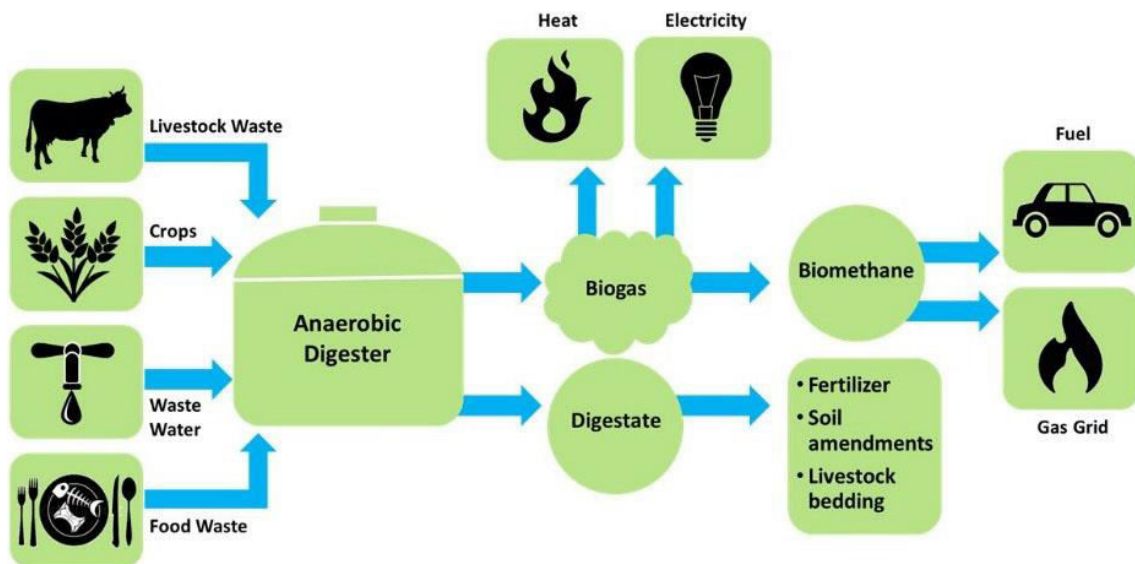


Figure 5 : Biogas: Converting waste to energy



|| Volume 12, Issue 5, May 2023 ||

| DOI:10.15680/IJIRSET.2023.1205186 |

#### IV. EXPERIMENTAL RESULTS

##### 4.1 Slump Flow Test

The Slump-flow test is the simplest and most widely adopted test method for evaluating the filling/flow ability quality of self-compacting concrete in the laboratory and at construction sites (ASTM C 1611). Basically, the slump flow test is used to assess the horizontal free flow of SCC in the absence of obstructions. On lifting up the slump cone filled with concrete the concrete flows. The average diameter of the concrete circle is a measurement for the flow ability of the concrete. In this study, thereby the diameter of the concrete flowing out of the slump cone was measured by calculating the average of two perpendicularly measured diameters to determine the slump flow of SCC.

##### 4.2 T50 Test

The time T50 cm is a secondary indication of flow ability of concrete. Basically, this test is a part of slump flow test. It measures the time taken by the concrete in seconds - from the instant the cone is lifted to the instant when horizontal flow reaches to the diameter of 500mm (Sonebiet al, 2001).

##### 4.3 V- Funnel Test

The flow ability of the fresh concrete can also be tested with the V-funnel test, where the flow time is measured. This test apparatus consists of a funnel with a rectangular cross section ( top dimension is 495 mm by 75 mm and the bottom opening is 75 mm by 75 mm) and the total height is 572 mm with a 150 mm long straight section. In this study the funnel was filled with about 12 liter of fresh concrete and the time taken to flow through the apparatus was measured as illustrated in Figure 3. Shorter flow time indicates greater flow ability. In addition, T5min was also measured with V-funnel, which indicates the tendency for segregation. If the concrete shows segregation, the flow time will increase significantly. In this method, however, the funnel was refilled with concrete and left for 5 minutes to settle. Thus, the tendency of concrete for segregation was observed.

##### 4.4 L -Box Test

The passing ability of SCC through narrow spaces, even with congested area of reinforcement, can be assessed by the L-box test (Bhuva et al., 2011). The vertical section of the apparatus in was filled up with 14 liter fresh concrete and after one minute, the concrete was let to pass through the reinforcement towards the horizontal section. When the concrete was in stable condition, the height of concrete at the end of the horizontal section Roy, Mohammed, Mansur, Hasan & Ullah ICPACE 2019(H2) and height of the vestige of concrete in the vertical section (H1) were measured individually to calculate the blocking ratio H2/H1, in order to observe the passing ability of fresh SCC.

##### 4.5 Density Test

The unit weight estimated in this study is freshly mixed SCC unit weight, which was calculated following the ASTM specification (ASTM C138 / C138M - 17a) right after the samples being casted. The following formula in the equation (1) was used to calculate the unit weight of fresh SCC.

$$D = (M_c - M_m) / V_m \quad (1)$$

Where, 'D' is the density/unit weight of concrete (Kg/m<sup>3</sup>), 'M<sub>c</sub>' is the mass of mold filled with concrete (Kg), 'M<sub>m</sub>' is the Mass of mold (Kg) and 'V<sub>m</sub>' is the volume of mold (m<sup>3</sup>).

##### 4.6 Compressive and Tensile Strengths Test

Both compressive strength and tensile strength tests were carried out upon the specific SCC specimens as per ASTM C39 and ASTM C496 respectively using universal testing machine in concrete laboratory.

#### V. CONCLUSION

Landfilling is still the most common method used in the north eastern region off Illinois, despite the many new approaches that are being developed for the management of solid waste. landfill construction and closure might pose arisk to the quality open the air and groundwater owing to leachate ingestion and emitted gases. Even though appropriate treatment and monitoring or maintained for a considerable amount of time (30 years), this might endanger The public's health. If incorrect, Such administration ineffective and possibly dangerous.



- According to the figures acquired, paper and inert material ranked second and third, respectively, In terms of the overall percentage of trash brought on by food and vegetable scraps and 100 percentage of reuse they caused. There were More single use carry on bags then usual.
- Since there is a manual separation plate type of solid waste at the Dumping site in villages, it is there most efficient way to acquire the recovery and reuse of materials such as metal, Plastic, glass, rubber, etc. Glass, ceramics, And metals work virtually equivalent to one another. Regulations for Environmental Protection (reduction, recycling, reuse, and recovery) ought to Serve as the framework.
- It is required to create and annual report on the addition of solid waste collection plans.
- Litter containers must be made available in public areas, and segregation is required at all sources.
- Knowledge of the community, political commitment, and civic involvement are essential to the successful application of governing rules and a comprehensive strategy hour effective disposal.
- Adequate health and safety measures should be in place for personnel at all stages of waste management.
- Since smaller trucks are you used to transport solid garbage from the disposal site, which is several kilometres away, setting up a recycling facility would be perfect in order to reduce transportation costs.

As general public, we can not do much in policy and regulations formulation, adoption of newer technologies related to recycling and other waste management options but we can play a very important role in this process if we can adopt only few tips. Here are a few tips to achieve this goals :-

- Keep ourself informed : It is important that we are in the know about what is happening on the environment front. Read about how untreated sewage is through into the rivers, attend public lectures about air pollution, and keep in touch with new policies that affect our environment. The more informed we are, the better equipped we are fight such issues.
- Consume less : Motto : Refuse..... Reduce.....Reuse.....Recycle. This means consuming fewer resources, reusing whatever we can and finally recycling what can't be reused. This process greatly reduces the garbage.
- Say 'No' to plastic bags : One of the biggest sources of pollution in Indian cities is the ubiquitous plastic bag. Refuse to accept one. Instead, carry a cloth shopping bag with us.
- Separate our garbage : India has one of the world's most efficient recycling mechanisms. Use the service of our Raddiwallah. Newspapers, bottle cans and other such recyclable can fetch us money and in the process we can help to save the environment. Rag pickers, too, perform a vital function for the city. Kitchen garbage (biodegradable) should be separated from non-biodegradable waste.
- Compost our organic waste : Star a vermiculture bin. We can convince our neighbors to start a vermiculture bin also to produce manure.

Stop burning garbage : Ask our neighbors to desist from burning solid wastes. It may seem harmless but smoke emitted from burning contributes to air pollution. Also, when there are plastic in the heap it emits dangerous toxic fumes. Leaves can be converted to fertilizer through composting& plastic can be recycled

## REFERENCES

- 1) T. J. Sin, G. K. Chen, K. S. Long, I. Goh, and H. Hwang, "Current practice of waste management system in Malaysia : 1<sup>st</sup> FPTP Postgrad. Semin. "Towards Sustain. Manag., 2013.
- 2) A. Khalid, M. Arshad, M. Anjum, T. Mahmood, and L. Dawson, "The anaerobic digestion of solid organic waste," Waste Management. 2011.
- 3) L. Matsakas, Q. Gao, S. Jansson, U. Rova, and P. Christakopoulos, "Green conversion of municipal solid wastes into fuels and chemicals," Electronic Journal of Biotechnology. 2017.
- 4) H. I. Abdel-Shafy and M. S. M. Mansour, "Solid waste issue: Sources, composition, disposal, recycling, and valorization," Egyptian Journal of Petroleum. 2018.
- 5) Senate Economic Planning Office, "Philippines Solid Waste," Philipp. Solid Wastes A Glance, 2017.
- 6) A. Johari, H. Alkali, H. Hashim, S. I. Ahmed, and R. Mat, "Municipal solid waste management and potential revenue from recycling in Malaysia," Mod. Appl. Sci., 2014.
- 7) M. D. M. Samsudin and M. M. Don, "Municipal solid waste management in Malaysia: Current practices, challenges and prospect," J. Teknol. (Sciences Eng., 2013).
- 8) U. Arena, "Process and technological aspects of municipal solid waste gasification. A review," WasteManagement., 2012.
- 9) J. Chun Lee and B. D. Pandey, "Bio-processing of solid waste and secondary resources for metal extraction –A review," Waste Management. 2012.



- 10) A. Pires, G. Martinho, and N. Bin Chang, “Solid waste management in European countries: A review of system analysis techniques,” *Journal of Environmental Management*. 2011.
- 11) A. Fercoq, S. Lamouri, and V. Carbone, “Lean/Green integration focused on waste reduction techniques,” *J. Clean. Prod.*, 2016.
- 12) C. Ezeah, J. A. Fazakerley, and C. L. Roberts, “Emerging trends in informal sector recycling in developing and transition countries,” *Waste Management*. 2013.
- 13) J. G. Paul, J. Arce-Jaque, N. Ravena, and S. P. Villamor, “Integration of the informal sector into municipal solid waste management in the Philippines – What does it need?,” *Waste Management.*, 2012.
- 14) P. S. Murthy and M. Madhava Naidu, “Sustainable management of coffee industry by-products and value addition – A review,” *Resources, Conservative and Recycling.*, 2012.
- 15) D. Victor and P. Agamuthu, “Strategic environmental assessment policy integration model for solid waste management in Malaysia,” *Environment Sci. Policy*, 2013.



SJIF Scientific Journal Impact Factor

Impact Factor: 8.423



# INTERNATIONAL JOURNAL OF INNOVATIVE RESEARCH

IN SCIENCE | ENGINEERING | TECHNOLOGY

 9940 572 462  6381 907 438  [ijirset@gmail.com](mailto:ijirset@gmail.com)



[www.ijirset.com](http://www.ijirset.com)

Scan to save the contact details