



e-ISSN: 2319-8753 | p-ISSN: 2347-6710

IJRSET

International Journal of Innovative Research in
SCIENCE | ENGINEERING | TECHNOLOGY



INTERNATIONAL JOURNAL OF INNOVATIVE RESEARCH

IN SCIENCE | ENGINEERING | TECHNOLOGY

Volume 12, Issue 5, May 2023

ISSN INTERNATIONAL
STANDARD
SERIAL
NUMBER
INDIA

Impact Factor: 8.423

9940 572 462

6381 907 438

ijrset@gmail.com

www.ijrset.com

Development of Android Application for Maharashtra Tourism

Yashwini Bhangale¹, Shruti Bankar², Apurva Joshi³, Sujal Magar⁴, Mrs. Pranita Shitole¹

Diploma Student, Department of Computer Engineering, AISSMS Polytechnic, Pune, Maharashtra, India¹

Associate Professor, Department of Computer Engineering, AISSMS Polytechnic, Pune, Maharashtra, India²

ABSTRACT: Developing an Application for Tourism guide gives the users the immense feeling to explore around their area. There is no doubt that travel is one of the top three sectors disrupted by technology. Smart tourism provides various tour and tourism services based on Internet of Things (IoT), communication system, bigdata and Artificial Intelligence (AI) of the key technologies of the 4th industrial revolution. The tourism bigdata platform provides tourists information on tourism destinations and festivals by data analysis. Travel apps are taking the centre stage in the mobile app development, as more and more people are using them. The travel industry is growing drastically as never before and since there are always new apps coming out one of the most thought over questions is what are the essentials ingredients of the best travel apps? There are tons of different travel apps out there today, with all kind of interesting features. The main problem of frequent travellers who are traveling whole around the world needs this kind of app, but due to limited storage and switching to different apps it become tedious for the traveller and spoils the mood. This paper presents a new approach for smart search. This project android tourism guide provides the tourist with city map depending on its current location entered by the android phone user. This information helps the tourists to find the desired locations to visit. Well it consists of entire details of those locations or how to reach the location but it provides the basic information to decide the places to visit. This project is mainly beneficial for the tourist's having no idea about the places they want to visit. By providing a geographic based information system the tourists and people shifting to new cities can get a better guidance of the places they want to visit. This proposed application does require internet access and by making the application GIS based, it includes many advantages as the user can view the required location in map and accordingly estimate the time that will be required to reach the final destination

I. INTRODUCTION

The main goal of this project is to minimize searching work and human efforts. The aim of the project is to develop an android app that helps travellers on his/her journey. The purpose of our project is to provide the basic idea on some common conversation in the different places that the travellers need to go after coming to that place. The main aim of this research is to develop a mobile travel guide application with added functions to an existing application. Especially in this application, the interaction between users is the new function compared to traditional travel. The main objectives of the project are to understand the basic of android development involved in app development, to understand the trends and working of Travel app currently used, to understand how to implement the different algorithm on the real time problem, to understand the flow in software development and documentation associated with it

II. RELATED WORK

Technology is constantly advancing and changing, and the travel and tourism industry market will progress along with it. There has been a rise in the use of mobile devices in certain fields like the tourism sector in recent years, consequent to the fact that mobile phones are presently the existing platform for ubiquitous computing due to their accessibility and handy nature. The recent increase in mobility of tourists in the world, has led to great interest in tourism flows. In recent times, most researchers emphasize on balancing the needs and behaviour of tourists and

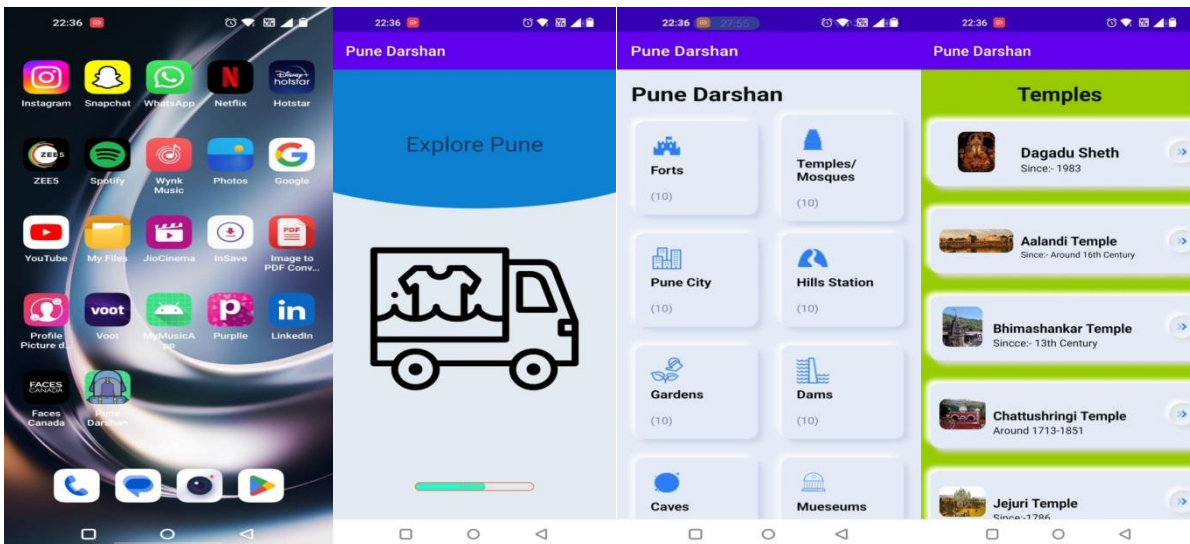


also the generation I surrounding. Several people around India and state of Maharashtra itself have not gone through the places which are unseen and unexplored. Through the Application by providing the Appropriate and extra features will do
theneedful for the users and surveying techniques in the study of tourism geography has improved, since the GIS and other important visualization techniques have relevant functions in the tourism sector.. After text detection, text inpainting is accomplished by using exemplar based inpainting algorithm.

II. METHODOLOGY

Exemplar Developing an Application for Tourism guide gives the users the immense feeling to explore around their area. There is no doubt that travel is one of the top three sectors disrupted by technology. Smart tourism provides various tour and tourism services based on Internet of Things (IoT), communication system, big data and Artificial Intelligence (AI) of the key technologies of the 4th industrial revolution. The tourism big data platform provides tourists information on tourism destinations and festivals by data analysis. Travel apps are taking the centre stage in the mobile app development, as more and more people are using them. The travel industry is growing drastically as never before and since there are always new apps coming out one of the most thought over questions is what are the essentials ingredients of the best travel apps ? There are tons of different travel apps out there today, with all kind of interesting features. The main problem of frequent travellers who are traveling whole around the world needs this kind of app, but due to limited storage and switching to different apps it become tedious for the traveller and spoils the mood. This paper presents a new approach for smart search. This project android tourism guide provides the tourist with city map depending on its current location entered by the android phone user. This information helps the tourists to find the desired locations to visit. Well it consists of entire details of those locations or how to reach the location but it provides the basic information to decide the places to visit.

IV.RESULTS

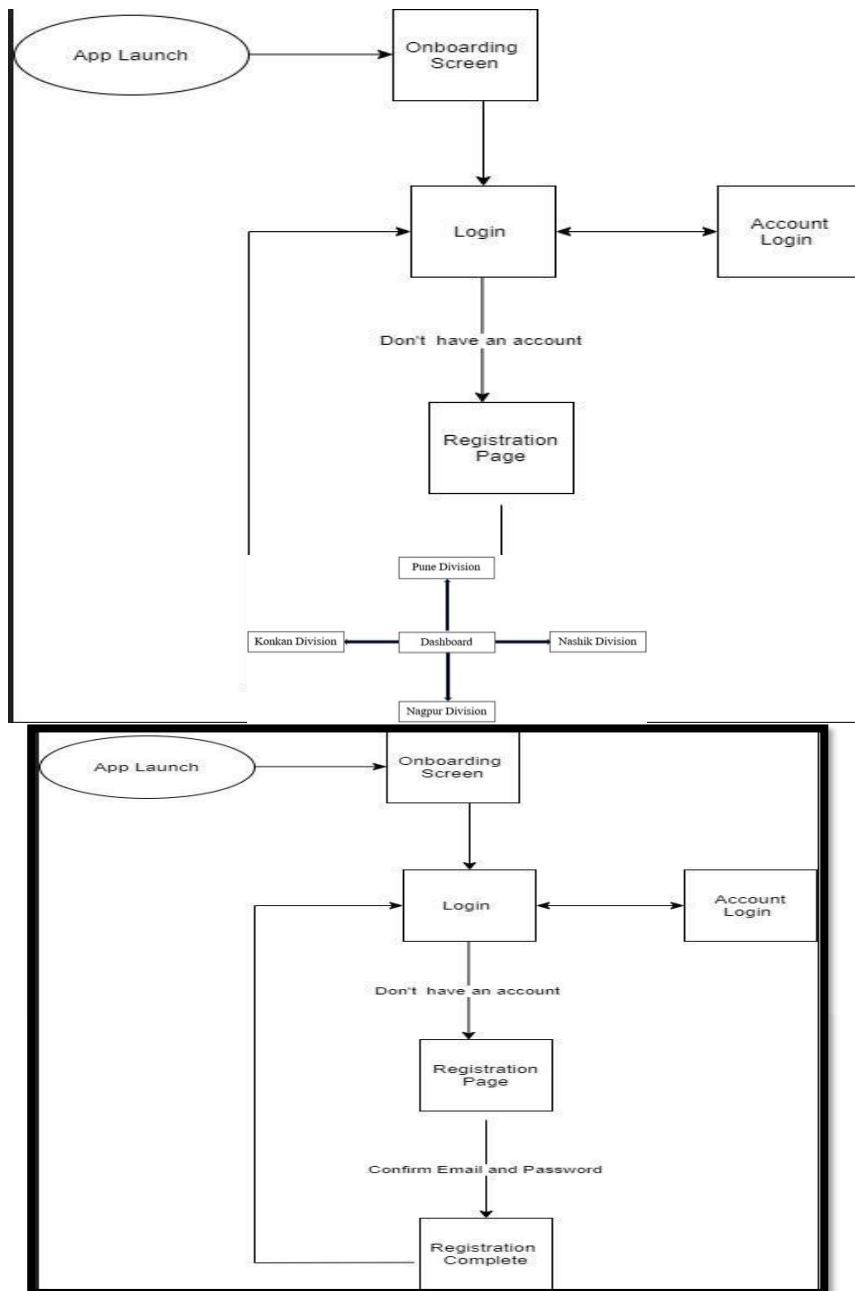


V. CONCLUSION

This research has meets and satisfied the requirements from the problems statements by enhancing the proposed system performances, provide adequate information for tourist, improve the usability aspect and finally the alert response system. Taken task like this in developing android application involves lots of obstacle and challenges due to rapid growth change technology. Taken into account of this project on travel guide Maharashtra, one can become an expert application developer that can stand on the market to earn money.

REFERENCES

1. <https://www.maharashtratourism.gov.in/fr/mobile-app>
2. <https://www.jetir.org/papers/JETIRAR06007.pdf>
3. <https://www.jetir.org/papers/JETIRAR06007.pdf>





SJIF Scientific Journal Impact Factor

Impact Factor: 8.423



INTERNATIONAL JOURNAL OF INNOVATIVE RESEARCH

IN SCIENCE | ENGINEERING | TECHNOLOGY

 9940 572 462  6381 907 438  ijirset@gmail.com



www.ijirset.com

Scan to save the contact details