



e-ISSN: 2319-8753 | p-ISSN: 2347-6710

IJRSET

International Journal of Innovative Research in
SCIENCE | ENGINEERING | TECHNOLOGY



INTERNATIONAL JOURNAL OF INNOVATIVE RESEARCH

IN SCIENCE | ENGINEERING | TECHNOLOGY

Volume 12, Issue 5, May 2023

ISSN INTERNATIONAL
STANDARD
SERIAL
NUMBER
INDIA

Impact Factor: 8.423

Manufacturing of Bricks Using Fly ash and Construction and Demolition Waste

Prem Khatpe, Nilesh Shendkar, Akshay Paturkar, Omkar Morwal, Siddharth Kale,

BE Final Year Student, Department of Civil Engineering, Dr. D.Y. Patil Institute of Engineering, Management and Research, Akurdi, Pune, India

Shivkumar Hallale

Department of Civil Engineering, Dr. D.Y. Patil Institute of Engineering, Management and Research, Akurdi, Pune, India

ABSTRACT:

The construction industry generates a substantial amount of waste, including fly ash and construction and demolition (C&D) waste. The improper disposal of these wastes poses significant environmental challenges. However, innovative approaches such as incorporating fly ash and C&D waste into the manufacturing of bricks offer a sustainable solution to both waste management and the production of construction materials.

This research paper focuses on the utilization of fly ash and C&D waste as key ingredients in the manufacturing of bricks. It explores the potential benefits of using these waste materials, including their impact on reducing environmental pollution, conserving natural resources, and promoting a circular economy.

The research examines the properties of bricks produced by incorporating fly ash and C&D waste, including their strength, durability, and thermal insulation. Various manufacturing techniques and mix proportions are evaluated to optimize the performance and characteristics of the bricks. Additionally, the paper discusses the challenges and limitations associated with the use of fly ash and C&D waste in brick manufacturing, such as potential leaching of harmful substances and the need for stringent quality control measures.

The research concludes with recommendations for further studies and practical implementation of fly ash and C&D waste-based bricks in the construction industry. It emphasizes the importance of government policies, regulations, and industry collaboration to promote the widespread adoption of sustainable construction practices. Ultimately, the utilization of fly ash and C&D waste in brick manufacturing can contribute to a more sustainable and greener construction sector, addressing waste management challenges and reducing the industry's ecological footprint.

KEYWORDS:

fly ash, construction and demolition waste, brick manufacturing, sustainable construction, waste management, environmental impact, alternative materials, sustainable solutions.

I.INTRODUCTION

The construction industry plays a crucial role in the development and growth of economies worldwide. However, this sector also generates a significant amount of waste, contributing to environmental pollution and resource depletion. Two major sources of waste in construction are fly ash, a byproduct of coal-fired power plants, and construction and demolition (C&D) waste, which includes debris from building materials, packaging, and demolished structures. Finding sustainable and effective ways to manage and utilize these waste materials is a pressing challenge.

In recent years, researchers and industry professionals have explored various methods to address the environmental impact of construction waste. One promising approach is the incorporation of fly ash and C&D waste into the manufacturing of bricks. By integrating these waste materials into the production process, the construction industry can not only mitigate environmental pollution but also reduce the demand for traditional raw materials.

This research paper aims to investigate the manufacturing of bricks using fly ash and C&D waste as alternative ingredients. The utilization of fly ash and C&D waste in brick manufacturing offers several potential benefits, such as

reducing the amount of waste sent to landfills, conserving natural resources, and promoting a circular economy. Furthermore, incorporating these waste materials into bricks can lead to the development of sustainable construction materials with desirable properties.

The objectives of this study include examining the properties of bricks produced by incorporating fly ash and C&D waste, evaluating different manufacturing techniques and mix proportions, and analyzing the potential challenges and limitations associated with their use.

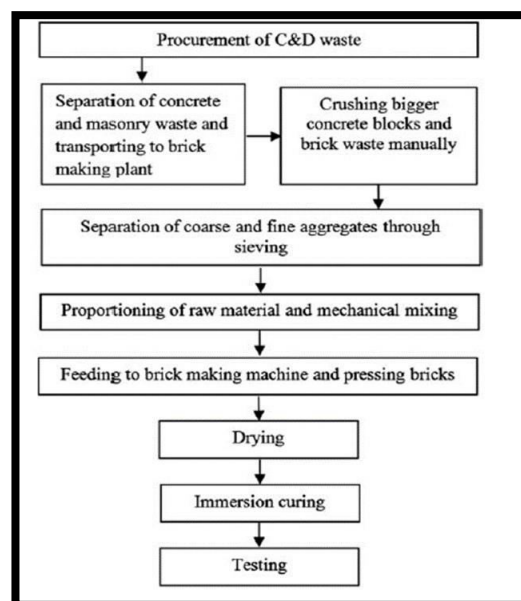
The findings of this research will contribute to the understanding of the feasibility and effectiveness of utilizing fly ash and C&D waste in brick manufacturing, as well as provide insights into their potential applications in the construction industry. Overall, the utilization of fly ash and C&D waste in brick manufacturing represents a promising avenue for sustainable waste management and construction material production. By exploring this innovative approach, the construction industry can take significant strides towards reducing its environmental footprint and transitioning to a more circular and resource-efficient model of operation.

II.MATERIALS AND RESEARCH METHODOLOGY

Materials:-

- 1.1 Cement
- 1.2 Fly Ash
- 1.3 brick mould
- 1.4 Demolition materials like concrete, brick, wallboard, plaster, and used lumber
- 1.5 Packaging materials like paper, cardboard, plastic and metal retaining bands
- 1.6 Wood including trees and scrap lumber
- 1.7 Asphalt and waste concrete
- 1.8 Sanitary waste and garbage
- 1.9 Scrap-metal products
- 1.10 Rubber, plastic, and glass; and
- 1.11 Pesticides and pesticide container
- 1.12 Coarse Aggregate
- 1.13 Fine Aggregate
- 1.14 Water

Research Methodology:-



1.15 Collection of Fly Ash and C&D Waste:

Fly ash samples are collected from coal-fired power plants, ensuring representative samples from different sources. C&D waste samples are obtained from construction sites, demolition sites, and recycling centers, covering a range of materials and compositions.

1.16 Characterization of Fly Ash and C&D Waste:

The collected fly ash and C&D waste samples are characterized to determine their physical, chemical, and mineralogical properties. Standard testing methods such as particle size analysis, X-ray diffraction (XRD), scanning electron microscopy (SEM), and energy-dispersive X-ray spectroscopy (EDS) are used.

1.17 Brick Manufacturing Process:

Various manufacturing techniques are employed to incorporate fly ash and C&D waste into the brick production process. The mix proportions are determined through preliminary experiments, considering the desired properties and performance of the bricks. The ingredients, including fly ash, C&D waste, aggregates, binders, and additives, are mixed in specific ratios using appropriate equipment. The mixture is then compacted and shaped into brick molds using a hydraulic press or extrusion machine. The bricks are cured under controlled conditions, such as ambient temperature and humidity, for a specified duration.

1.18 Testing of Brick Properties:

The manufactured bricks are subjected to various tests to evaluate their mechanical, physical, and thermal properties. Compressive strength tests are conducted according to standardized procedures to determine the load-bearing capacity of the bricks. Water absorption tests are performed to assess the bricks' porosity and resistance to moisture ingress. Durability tests, including freeze-thaw resistance and weathering tests, are conducted to evaluate the long-term performance of the bricks. Thermal conductivity tests measure the bricks' ability to resist heat transfer and provide insights into their thermal insulation properties.

1.19 Analysis and Comparison:

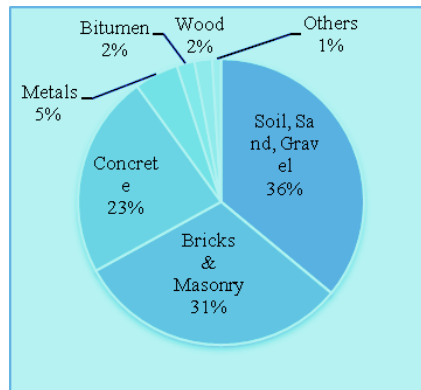
The test results of the bricks incorporating fly ash and C&D waste are analyzed and compared with conventional bricks made from traditional raw materials. Statistical analysis is performed to assess the significance of any differences observed. The performance, properties, and potential advantages of the fly ash and C&D waste-based bricks are evaluated based on the analysis.

1.20 Challenges and Limitations:

The challenges and limitations associated with the use of fly ash and C&D waste in brick manufacturing are discussed. Issues such as the leaching of harmful substances, variability in waste composition, and the need for quality control measures are identified and addressed.

1.21 Recommendations:

Based on the findings and analysis, recommendations are provided for further research, optimization of manufacturing processes, and the practical implementation of fly ash and C&D waste-based bricks in the construction industry. Consideration is given to government policies, regulations, and industry collaboration to promote the widespread adoption of sustainable construction practices.



The methodology described above provides a systematic approach to studying the manufacturing process and properties of bricks incorporating fly ash and C&D waste. The combination of laboratory characterization, manufacturing techniques, and comprehensive testing ensures a thorough evaluation of the potential benefits and challenges associated with utilizing these waste materials in brick production.

III.RESULTS AND DISCUSSION

A Parametric studies on materials:

Various materials are used namely OPC of 53 grade, M Sand, recycle fine aggregate, natural coarse aggregate, recycled coarse aggregate and the basic material test is conducted for this material as follows. **1 Cement:** OPC of 53 grade (BIRLA Super) is chosen for this project confirming to IS 12269:2013.

1	SPECIFIC GRAVITY	3.15
2	STANDARD CONSISTENCY	34%
3	INITIAL SETTING TIME	46MIN
4	COMPRESSIVE STRENGTH	28.5MPa

TABLE 3:PHYSICAL PROPERTIES OF CEMENT

2 Fine Aggregate:

Basic material tests are to be done for these materials as per specification given in IS 383:1970 and IS 2386-1963(Part 1 and Part 3).The sieve analysis will be conducted for both materials with different trail mixes and fine modulus of these materials lies under Zone 2 as per code.

TESTS	M-SAND	FINE AGGREGATE
SPECIFIC GRAVITY	2.34	2.19
WATER ABSORPTION	9.8%	16.8%

Table 4: Specific gravity and water absorption.



3 Coarse aggregates:

There are two types of fine aggregate used in this project namely natural coarse aggregate and recycled coarse aggregate. Basic material tests are done for these materials as per specification given in IS 383:1970 and IS 2386-1963(Part 1 and Part 3).

TESTS	NCA	RCA
SPECIFIC GRAVITY	2.6	2.36
WATER ABSORPTION	3.09%	5.56%

Table5: Physical properties of coarse aggregate

B Fresh concrete properties:

When freshly prepared, concrete undergoes several processes such as mixing, transportation, compaction, and finishing. The quality of concrete in its plastic state is determined by how easily these functions can be executed, making workability an important factor to consider. Workability is influenced by various factors, including water content, mix proportions, aggregate size, aggregate shape, aggregate surface texture, aggregate grading, use of admixtures, and time and temperature conditions. To assess the workability of concrete, several tests are recommended, including the slump test, compacting factor test, and Vee Bee consistometer test. Among these tests, the slump test is commonly used to measure the workability of concrete.

TRAIL MIX	SLUMP(MM)
MIX 1	26
MIX 2	20
MIX 3	15
MIX 4	12
MIX 5	7
MIX 6	4

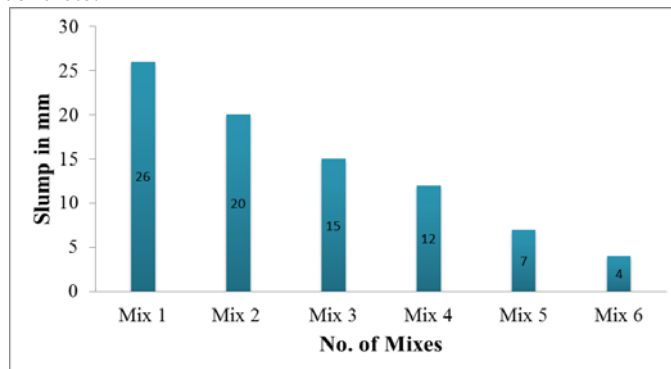


Figure 2: Graph indicating slump value of all trail mixes Table6:

Slump value of all trail mixes

C Hardened concrete properties:

Testing the properties of hardened concrete is essential to assess its actual performance and suitability for the intended application. Various tests are conducted to evaluate parameters such as density, water absorption, drying shrinkage, compressive strength, and durability. In this project, 100mm cubes are cast to determine water absorption and durability. Additionally, 150mm cubes are cast to determine the characteristic strength of the mix. Solid concrete blocks measuring 400mm x 200mm x 150mm are utilized to evaluate the real-time performance of the mix, while prisms measuring 75mm x 75mm x 290mm are cast to assess drying shrinkage across different trial mixes. These tests provide valuable insights into the strength and durability of the hardened concrete, ensuring its suitability for practical applications.



IV.CONCLUSION

In conclusion, the incorporation of fly ash and construction and demolition waste in brick manufacturing offers a sustainable solution to waste management and promotes environmental responsibility in the construction industry. By producing bricks with desirable properties and addressing challenges such as leaching and quality control, these waste materials can be effectively utilized, reducing environmental pollution and conserving resources. Implementing these practices requires further research, collaboration, and supportive policies, leading to a greener and more sustainable construction sector.

REFERENCES

- [1] 1. Bhatia D, 2014. Research and development of quantity building material through utilization of construction and demolition waste, B.Tech NIT Rourkela.
- [2] Recycling and Reuse of Construction and Demolition waste : sustainable approach. . Construction and Building Materials 77 (2015) 357–369.
- [3] Tay, J. H., 1987. Brick manufactured from Sludge, Journal of Environmental Engineering. Vol 113 No. 2. 1-7
- [4] Ding T, Xiao J. Estimation of building-related construction and demolition waste in Shanghai. Waste Manag. 2014 Nov;34(11):2327-34. doi: 10.1016/j.wasman.2014.07.029. Epub 2014 Aug 24. PMID: 25164857. [5] A Study on Strength Properties for Partially Replacement of Coarse Aggregate by Demolished Brick Waste with Addition of Steel Fibers, Vol 12, Issue 07, July/2021 ISSN NO:0377-9254.



INNO SPACE
SJIF Scientific Journal Impact Factor
Impact Factor: 8.423



ISSN INTERNATIONAL
STANDARD
SERIAL
NUMBER
INDIA



INTERNATIONAL JOURNAL OF INNOVATIVE RESEARCH

IN SCIENCE | ENGINEERING | TECHNOLOGY

9940 572 462 6381 907 438 ijirset@gmail.com



www.ijirset.com

Scan to save the contact details