



e-ISSN: 2319-8753 | p-ISSN: 2347-6710

IJRSET

International Journal of Innovative Research in
SCIENCE | ENGINEERING | TECHNOLOGY



INTERNATIONAL JOURNAL OF INNOVATIVE RESEARCH

IN SCIENCE | ENGINEERING | TECHNOLOGY

Volume 12, Issue 5, May 2023

ISSN INTERNATIONAL
STANDARD
SERIAL
NUMBER
INDIA

Impact Factor: 8.423

Hand Gesture Recognition for Deaf and Specially-Abled using ML and AI

Aditya R. Chaudhari¹, Samarth R. Kavathe², Syed Faizani³, Vaishnavi G. Halnor⁴,
Priyanka S. Jadhav (Guide)⁵

U.G. Student, Department of Computer Engineering, Smt. Kashibai Navale College of Engineering, Pune, Maharashtra, India^{1,2,3,4}

Assistant Professor, Department of Computer Engineering, Smt. Kashibai Navale College of Engineering, Pune, Maharashtra, India⁵

ABSTRACT: Worldwide, millions of people have hearing impairment. This significant number highlights the significance of creating a system that can translate sign language into text and recognise it, making sign language easier to understand without the need of a translator. A CNN algorithm based on sign language has been suggested. To communicate with others who are mostly deaf and dumb, we utilise hand gestures and sign language, which is a language in its own right.

KEYWORDS: Convolutional Neural Network, Sign Language, Machine Learning, Alphabet predictions.

I. INTRODUCTION

AI is a utilization of man-made brainpower (computer based intelligence) that gives frameworks the capacity to consequently gain and improve for a fact without being expressly modified. AI centers around the advancement of PC programs that can get to information and utilize it find out on their own. The Gestural Direct can be coordinated in the Human PC Connection by advancing a functioning exploration in the motion acknowledgment field. The human motion acknowledgment idea goes under the overall system of example acknowledgment. The framework in this system comprises of two cycles as Portrayal and Choice Cycles. The portrayal interaction changes over the crude mathematical information into a structure adjusted to the choice cycle which has the capacity to additional grouping of the information. The securing system and the translation cycle are two additional cycles which go under Signal Acknowledgment Framework. These cycles convert the actual signals into mathematical information and give a significance of the image series individually. Any arbitrary hand signal comprises of four components as hand design, development, direction and area. These signals are additionally delegated static motions and dynamic motions.

Over 5percent of the total populace, and that implies 360 million individuals, including 32 million youngsters and 328 million grown-ups, has hearing handicap as per World Wellbeing Association (WHO) insights. Hearing weakened individuals for the most part utilize gesture based communications for speaking with others. Yet, generally hearing individuals don't know communication via gestures. While considering enormous number of individuals who experience the ill effects of hearing inability, it is uncovered how significant furnishing them chance to speak with hearing individuals who don't know about communication through signing a need to foster such a communication through signing acknowledgment framework emerges step by step. The significant central issues of such a gesture based communication framework are decreasing expense and getting more precise rate productively. Fostering a gesture based communication framework in light of AI for naturally acknowledgment communication through signing and switching communication through signing over completely to message assists hearing individuals with conveying and figure out hearing hindered individuals. The proposed framework involves the pictures in the neighborhood framework or the casing caught from webcam camera as information. Handled input picture is given to the classifiers which use Convolution Brain Organization Calculation. It characterizes the picture and converts into model. At last the anticipated outcome is created.

II. RELATED WORK

In [1] the proposed framework an original independent learning system was introduced to coordinate the advantages of both profundity vision and EMG signals. Mix of profundity data and EMG with HSOM and MNN embraced to accomplish better precision for the planned VR application. A hand motion acknowledgment exhibit was carried out to confirm the viability of the proposed structure.

In [2] the proposed framework Best Outcomes other than involving the sensor for hand motion acknowledgment. Blunder Rectification Result Code Backing Vector Machines (ECOC-SVM) and K - Closest Neighbor (KNN) classifiers. Sensors were utilized to catches finger capacitance values. Accomplished a grouping pace of 97%

The proposed [3] framework provides two-way correspondence which assists with connecting between the impeded individuals to typical individuals with practically no challenges. Involved CNN calculation methods for hand motion acknowledgment. NLP was utilized to take care of the data. Best Results other than involving the sensor for hand motion acknowledgment

In [4] the proposed framework K closest neighbors from the preparation information. The distance is determined utilizing n Euclidean Distance. Support Vector Machine" (SVM) a regulated AI calculation was utilized for both grouping and relapse difficulties. Acquired Precision 90%

In [5] the proposed framework 6000 pictures Data set utilized of English letters in order. 4800 utilized for preparing and 1200 for testing. Dataset comprised of 26 signs. SVM methods utilized for grouping and Acquired Precision around 88%..

III. METHODOLOGY

1. **Image data collection:** The image data used in this project were obtained from Kaggle, a popular platform for sharing and discovering datasets.
2. **Dataset division:** The collected dataset is divided into two parts: a training set and a testing set. The training set typically accounts for 80% of the data, while the testing set comprises the remaining 20%. This division allows for model training on a majority of the data while reserving a portion for evaluating the model's performance.
3. **Preprocessing and feature extraction:** Before training the model, various preprocessing techniques are applied to the image data. These techniques might involve resizing, normalization, or filtering to enhance the quality and standardize the input images. Additionally, feature extraction methods are used to transform the raw image data into meaningful and informative representations. These extracted features serve as inputs for the subsequent classification model.
4. **Convolutional Neural Network (CNN):** CNNs are a type of deep learning model commonly used for image classification tasks. In this project, a CNN is employed as the classification model. CNNs are designed to automatically learn and recognize patterns and structures within images, making them well-suited for tasks like object recognition or image classification.
5. **Web application development:** A web application is being developed to provide a user-friendly interface for interacting with the trained model. The frontend of the application is built using Bootstrap, a popular framework for creating responsive and aesthetically pleasing web interfaces. The backend is implemented using Python, which allows for seamless integration with the machine learning model and other necessary functionalities.
6. **User image input and feature extraction:** When a user captures an image through the web application, the image is passed through the system. The captured image's features are then extracted using the same preprocessing and feature extraction techniques mentioned earlier. This process ensures that the user's image data is transformed into a suitable format for further processing.
7. **Matching features with trained model:** The extracted features from the user's image are compared and matched with the features obtained during the model training phase. By measuring the similarity or proximity between the features, a "nearby match" is determined.
8. **Predicted output:** Based on the nearest match found between the user's image features and the trained model's features, a predicted output is obtained. This output could be a classification label or any other relevant information associated with the matched features. The predicted output serves as the result presented to the user through the web application.

Overall, this project involves collecting image data, dividing it into training and testing sets, applying preprocessing and feature extraction techniques, training a CNN for classification, developing a web application

using Bootstrap and Python, extracting features from user-captured images, matching those features with the trained model, and obtaining predicted outputs based on the closest matches.

IV. PROPOSED SYSTEM

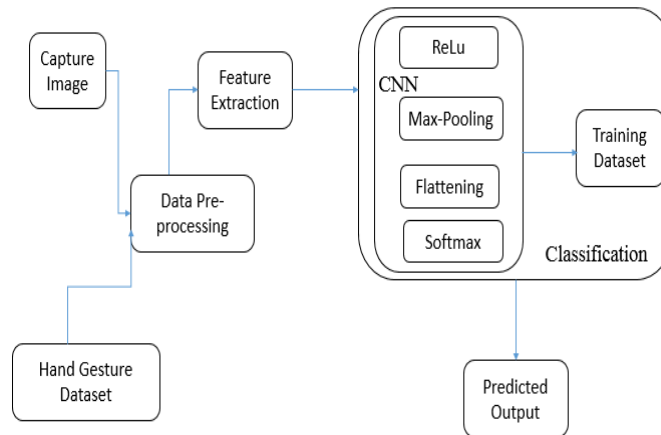
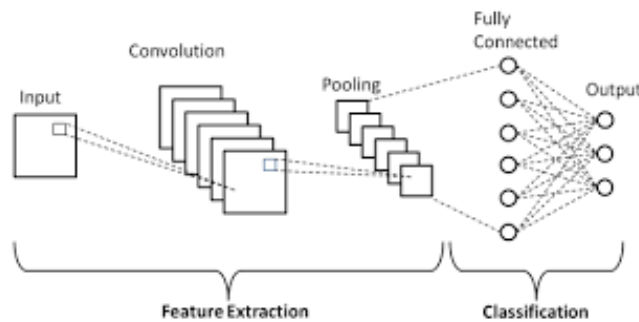


Fig. - System Architecture

The suggested system, which was developed in Python using CNN techniques, will be able to anticipate the gesture, such as which letter or number the user is attempting to express.

Algorithm Used in CNN



Why CNN ?

Because of its great accuracy, CNNs are utilized for picture categorization and identification. The CNN uses a hierarchical model that constructs a network in the shape of a funnel before producing a fully connected layer where all the neurons are interconnected and the output is processed. As a result, the suggested system uses a convolutional neural network.

V. EXPERIMENTAL RESULTS

Figures shows the results of the Hands and Letters detected. Below, Fig.1 shows the hand detected using cv2 library.



Fig.1

Fig.2, Fig.3 shows the detection of letter 'L' and letter 'U' after predictions.

Live Streaming

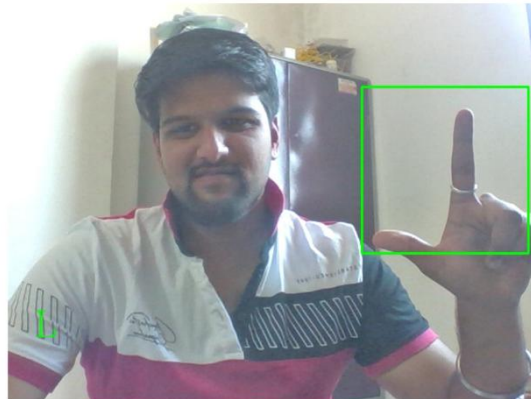


Fig.2

Live Streaming

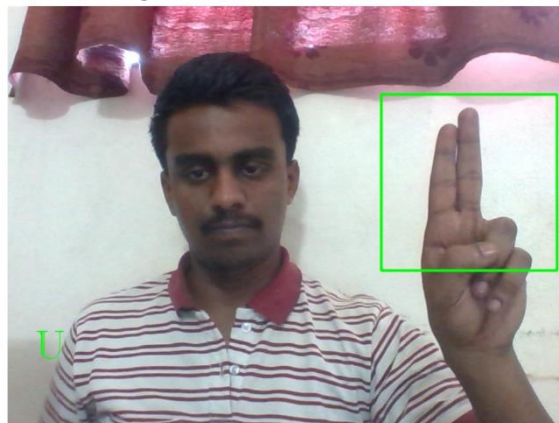


Fig.3

VI. CONCLUSION

The technology's ability to recognize hand gestures using the CNN algorithm will provide us the best results in the suggested framework. By recognizing the alphabets or numbers a person wishes to communicate, the Hand Gesture Recognition will enable two-way communication and make it easier for impaired persons to interact with non-impaired people. As a result, the implementation system can anticipate letter and numeric sequences as well as translate Sign Language.

REFERENCES

- [1] Salih ErtugOvur ,Xuanyi Zhou, “A novel autonomous learning framework to enhance sEMG-based hand gesture recognition using depth information”, Biomedical Signal Processing and Control , Science Direct 2021
- [2] W. K. Wong, Filbert H. Juwono, “**Multi-Features Capacitive Hand Gesture Recognition Sensor: A Machine Learning Approach**”, IEEE SENSORS JOURNAL, VOL. 21, NO. 6, MARCH 15, 2021
- [3] N. Gopinath, J. ANUJA, S. ANUSHA, V. MONISHA , “**A Survey on Hand Gesture Recognition Using Machine Learning**”, International Research Journal of Engineering and Technology (IRJET) , 2020
- [4] Omkar Vedak, Prasad Zavre, Abhijeet Todkar, Manoj Patil, “**Sign Language Interpreter using Image Processing and Machine Learning**”, International Research Journal of Engineering and Technology (IRJET), 2019
- [5] Rupesh Prajapati, Vedant Pandey , “**Hand Gesture Recognition and Voice Conversion for Deaf and Dumb**”, International Research Journal of Engineering and Technology (IRJET) , 2018



Impact Factor: 8.423



INTERNATIONAL JOURNAL OF INNOVATIVE RESEARCH

IN SCIENCE | ENGINEERING | TECHNOLOGY

 9940 572 462  6381 907 438  ijirset@gmail.com



www.ijirset.com

Scan to save the contact details