



e-ISSN: 2319-8753 | p-ISSN: 2347-6710

IJRSET

International Journal of Innovative Research in
SCIENCE | ENGINEERING | TECHNOLOGY

INTERNATIONAL JOURNAL OF INNOVATIVE RESEARCH

IN SCIENCE | ENGINEERING | TECHNOLOGY

Volume 12, Special Issue 2, April 2023

ISSN INTERNATIONAL
STANDARD
SERIAL
NUMBER
INDIA

9940 572 462

6381 907 438

ijirset@gmail.com

www.ijirset.com

Emotion Detection Model Using Deep Learning

D.MANIKANTA, CH.LOKESH

Department of CSE, Sathyabama University, Chennai, Tamil Nadu, India

ABSTRACT— These Human facial expressions convey a great deal more information than words. Understanding facial expressions is crucial in the realm of human-machine interaction. There are several applications for automated facial expression detection systems, including but not limited to human behaviour understanding, mental disorder diagnosis, and synthesized human emotions. Computer facial expression recognition with such a good recognition rate remains a tough task. Geometric and presentation are two common methodologies for automated FER systems in the literature. The four steps of understanding facial expressions include which was before, face identification, extraction of features, and expression categorization. In this study, we employed a variety of deep learning methodologies (convolutional neural networks) to detect the basic seven human feelings: rage, disgust, fear, happiness, sadness, surprise, and neutrality.

KEYWORDS— Fire accidents, Machine Learning, Deep Learning, Convolutional Neural Network, Optimization Algorithm, Loss Function, YOLOv3.

I. INTRODUCTION

"2018 will be the year when computers learn to understand human emotions." —Andrew Moore, Carnegie Mellon's dean of computer science.

Our desires have increased since the arrival of modern technology, and these know no bounds. Right present, there is a lot of research going on in the field of digital pictures and image processing. The rate of progress has indeed been exponentially, and it is still increasing. Graphics rendering is a vast subject of research with several applications in today's society.

Image segmentation is a subfield of signal analysis in which both the input and output signals are images. One of the most important uses for image processing is facial expression recognition.

Expression is a behavioural scientific gesture that enables us to communicate via our expressions. Face expression identification that is automated is crucial in robotics and artificial intelligence, making this a generational necessity. The purpose of this research is to create an Automated Face Emotion Recognition System capable of recognising and categorising human facial expression photographs into seven distinct expression classes.

II. EXISTING SYSTEM

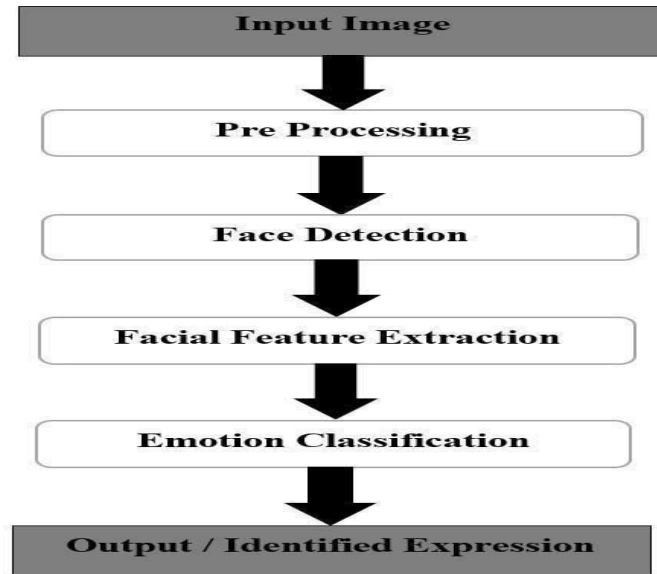
Human facial emotions may be classified into seven types: happy, sad, astonished, fearful, rageful, disgusting, and neutral. To convey our facial emotions, certain groups of facial muscles are stimulated. These apparently little but complex impulses within an emotion can provide a great deal of data about our state of mind. Using a simple and low technology known as facial expression detection, we can measure the impact of contents and products on the viewing population. For example, retailers may use these displays to evaluate client interest.

By acquiring extra information regarding patients' emotional states during therapy, healthcare practitioners can give better treatment to patients. Crowd engagement in events may be measured by entertainment producers in order to continuously enhance desired content.

Humans are adept at interpreting the emotions of others; in example, neonates as young as 14 months old can discriminate between happy and sad emotions. Can machines, on the opposing hand, better access emotional states than humans? To answer the topic, we created a deep training neural network that can anticipate human emotional states. We give them sight so they can see what we see with our other senses.

Organized by

Department of CSE, Velammal Engineering College, Chennai, India



III.LITERATURE SURVEY

[1]TITLE: Automatic Speech Emotion Recognition Using Machine Learning

AUTHOR:MatrinaLeila Kerkeni, Youssef Serrestou, Catherine Cléder.

This chapter compares voice emotional expressions (SER) systems. Theoretical definition, affective state description, and emotional manifestation modes are discussed. A SER system based on many classifications and feature extraction techniques is designed to conduct this study.

[2] TITLE: Speech EmotionClassificationusing MachineLearning

AUTHOR: Pooja Yadav,Pooja Yadav,Gaurav Aggarwal

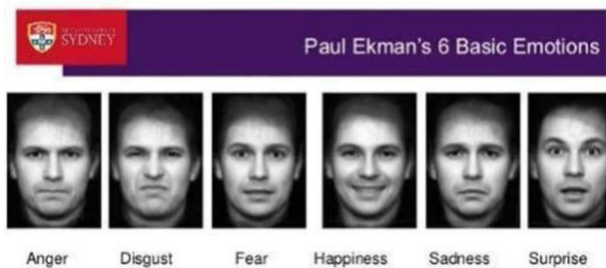
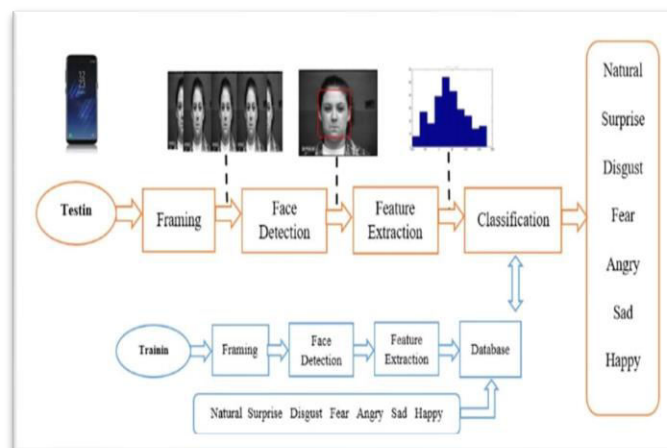
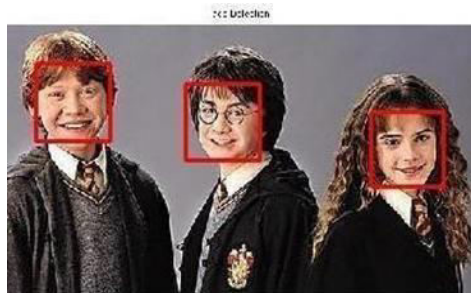
In recent years, the interaction between humans and robots has been a topic of concern. This article is the result of a survey of several research on the six basic human emotions: anger, hatred, fear, happiness, sadness, and surprise. To extract characteristics, several voice utterances obtained from different persons are employed.

IV. PROPOSED SYSTEM

The proposed system offers an alternate method for recognising human emotions from face pictures, and its control facial images may be classified into three major significant regions: eyes, mouth, and brows.

Cropping Image Feature Regions

Classification of Facial Emotions



V.MODULES

Preprocessing

Preprocessing is a phrase used to describe processes involving images at the most fundamental abstraction level, where both the source and the final target are intensity images. The bulk of preprocessing stages that have been implemented are as follows:

- a. Lessen noise
- b. Transform the picture into grayscale or binary mode.
- c. Change the brightness of the pixels.
- d. Geometric Transformation

FaceRegistration

Face Registration is a computer technology used in a variety of applications that recognises human traits in digital pictures. Faces are first detected in the image using a sequence of facial landmarks known as "face recognition" or "visual recognition" in this face expression registration method. In a process called as "facial registrations," these identified faces are mathematically normalised to match a reference image.



Facial Feature Extraction

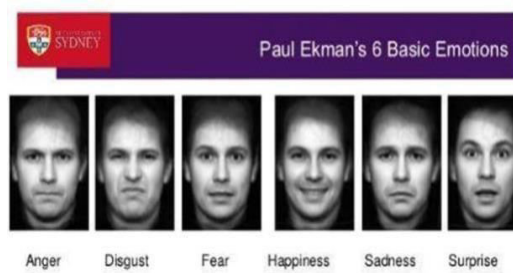
Facial feature extraction is a vital stage in software for facial recognition and is defined as the method of locating certain regions, patches, characteristics, or curvatures inside a two-dimensional image or muti range image. Inside that feature extraction procedure, a boundary - value vector is produced from of the resultant registered picture. The following traits are frequently extracted:aa

- a.Lips
- b. Eyes
- c. Eyebrows
- d.Nose tips

EmotionClassification

In the third step of classification, the system will try to categorise the presented faces expressing every one of the seven basic moods.

Paul Ekman (born February 15, 1934) is a leader in the study of emotion and its connection to facial expressions. He is a retired professor from the University of California, San Francisco. He's created a "atlas of emotions" with over 10,000 distinct facial expressions.

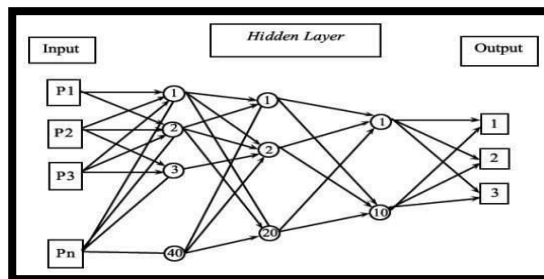


VI. METHODOLOGY

NeuralNetworkApproach:

A buried layer of neurons was included in the neural network. The technique is predicated on the premise that the system has access to a neutral face picture for each image. Using on-line back propagation, each neural network is developed individually.

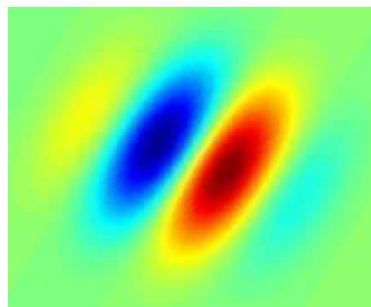
The neural net would be covered later.



Principal component analysis (Pc) is a statistics approach that applies a transformation matrix to turn a set of possibly connected observations into a value set of linear random variables that are independent.

GaborFilter

A Matching filter, named after Michel Mandel, is a linear function utilized in image processing to analyse texture. It simply examines if there is any specific harmonic material in the image along specific direction in a constrained region surrounding the site of evaluation. Despite a lack of scientific evidence and operational reason, many current vision experts contend that the frequencies and direction representations of Sift characteristics are identical to those discovered inside the human right eye visual system. They have been demonstrated to be extremely beneficial for texture categorization and discrimination. A gabor Filter filter appears to be a Probabilistic probability density function in the spatial domain controlled by a harmonics plane wave.



Support Vector Machine:

A Matched filter, named after Denis Mandel, is indeed a linear transformation that is used in image analysis to analyse texture. It simply examines if there is any certain harmonic data in the image along specific direction in a constrained region surrounding the site of evaluation. Despite a lack of scientific evidence and operational reason, many current vision experts contend that the periodicity and orientation representations of Sift characteristics are similar to those in the actual eye's visual system. They have been demonstrated to be extremely beneficial for roughness categorization and discrimination. A gabor Filter filter appears to be a Stochastic density function of probability in the feature space driven by a harmonics plane wave.

Training & Testing Database:

A typical profession in machine learning involves the development and research for machine learning techniques that learn from and even predict data. By creating a complex equation from incoming data, such algorithms create data-driven predictions or judgements. The final model can be constructed utilising data from different sources. Three specific data sets are typically employed at various stages of model building. The model is first developed using either training examples or a collection of cases used to train the female's variables

There are several face databases available online, including:

1. Female Japanese Facial Expressions (JAFFE)
2. CMU MultiPIE
- 3 FER
2. CMU MultiPIE
5. MMI
- 6.FEEDING
- 7 CK

SOFTWARE REQUIREMENT

- Anaconda

It is an open-source, free of charge release combining Py and R development tools for artificial intelligence and machine learning applications (large-scale data processing, forecasting, computer science), with the purpose of easing



management system to ensure and deployment. File extension, the packaging management system, is in charge of managing package versions. The Anaconda package, which contains over 250 widely used data sciences for Pc, Ubuntu, and Mac, is used by over 6 million individuals.

Among features are: o a syntax and insight writer for code completion

Several Python consoles (including IPython) are supported.

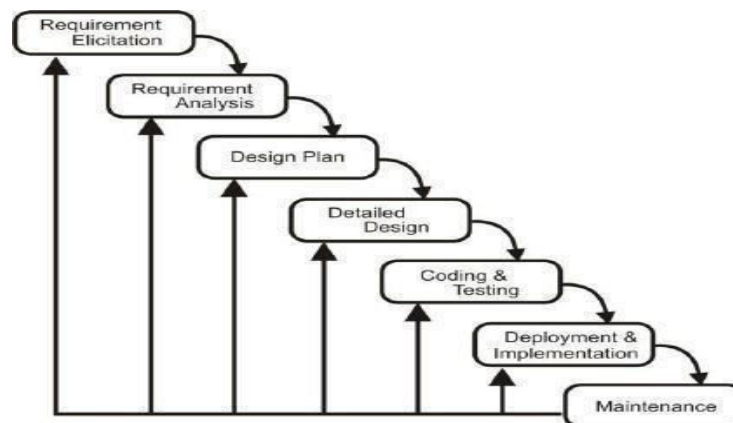
o The ability to analyse and alter variables to use a graphical user interface. Among the available plugins are: \

o Code Static

PLANNING

The actions we took while building this project were as follows:

1. Examine the problem statement.
2. Compilation of the specifications
3. Evaluation of the project's viability.
4. Creation of a layout.
5. Reviewing the journals for past comparable studies in this sector.
6. Choosing an algorithm development technique.
7. Examining the numerous advantages and disadvantages.
8. Begin the project's development
9. Setup of software such as ANACONDA.
10. Creating an algorithm is number ten.
11. Algorithm analysis by a guide.
12. PYTHON coding in accordance with the established method.



VII. CONCLUSION

This research presents a powerful face recognition system based on matching behavioural traits with physiological biometric measures. The physiological aspects of a facial picture that are important to diverse expressions such as pleasure, sadness, fear, fury, astonishment, and disgust are connected to distinct geometries that are rebuilt as the fundamental matching pattern for the identification system.

As a property basis, this system's behavioural characteristic connects the attitude behind diverse expressions. The property bases in genetic programming genes are classified as disclosed and hidden. In the field of biometric authentication, the gene training set examines the total expressional uniqueness of the individual and provides a strong expressionistic recognition system.

In contrast to prior cryptosystems, the development of a new asymmetric cryptosystem based on biometrics and featuring features such as hierarchy group secrecy eliminates the need for passwords and smart cards. It, just like other fingerprint scanning, requires specialised gear. This research endeavour offers a new research path in the field of

asymmetry physiologic cryptosystems, which is desperately needed to abolish password and smart cards. Experiments and research show that hierarchy security systems can recognise geometric forms for physiological properties.

VIII . FUTURE SCOPE

It is critical to note that there is no perfect formula for developing such a neural network that ensures its success. To achieve acceptable validation accuracy, each challenge will need a unique network architecture as well as a high number of traces and errors. This is a reason since neural networks are often characterised as "black box operations.". We attained an accuracy of roughly 70% in this experiment, which is not unacceptable in comparison to all previous models. Yet, we can improve in a number of areas, including-

- the num & configuration of C- layers
- the num & configuration of thick layers
- the dropout rate in thick layers.

Unfortunately, because to a lack of shows the structure devices, we couldn't go further into dense neural nets since the computer became incredibly slow, and we will try to make improvements in all of these fields in the years to come. Humans would also like to retrain databases in the system and enhance the performance of the models, but resources are once again a hurdle, and we will need to increase in numerous areas inside the future to solve faults and improve accuracy.

After the investigation of methods for coping with expression variation, further study may concentrate on the face classification problem and the optimum incorporation of rgb and depth information.

REFERENCES

- [1] W. Swinkels, L. Claesen, F. Xiao and H. Shen, "SVM point-based real-time emotion detection," 2017 IEEE Conference on Dependable and Secure Computing, Taipei, 2017.
- [2] Neerja and E. Walia, "Face Recognition Using Improved Fast PCA Algorithm," 2008 Congress on Image and Signal Processing, Sanya, Hainan, 2008
- [3] H. Ebine, Y. Shiga, M. Ikeda and O. Nakamura, "The recognition of facial expressions with automatic detection of the reference face," 2000 Canadian Conference on Electrical and Computer Engineering. Conference Proceedings. Navigating to a New Era (Cat. No.00TH8492), Halifax, NS, 2000, pp. 1091-1099 vol.2.
- [4] A. C. Le Ngo, Y. H. Oh, R. C. W. Phan and J. See, "Eulerian emotion magnification for subtle expression recognition," 2016 IEEE International Conference on Acoustics, Speech and Signal Processing (ICASSP), Shanghai, 2016
- [5] V. Kazemi and J. Sullivan, "One millisecond face alignment with an ensemble of regression trees," 2014 IEEE Conference on Computer Vision and Pattern Recognition, Columbus, OH, 2014
- [6] Y. Jia, E. Shelhamer, J. Donahue, S. Karayev, J. Long, R. Girshick, S. Guadarrama, and T. Darrell, "Caffe: Convolutional architecture for fast feature embedding," arXiv preprint arXiv:1408.5093, 2014.
- [7] T. Tieleman and G. Hinton, "Rmsprop: Divide the gradient by a running average of its recent magnitude." COURSERA: Neural Networks for Machine Learning, Tech. Rep., 2012
- [8] C. E. Premal and S. S. Vinsley, "Image processing based fire accidents detection using YCbCr colour model," in Proceedings of 2014 International Conference on Circuit, Power and Computing Technologies (ICCPCT), Nagercoil, India, 2014, pp. 1229-1237.
- [9] V. Vipin, "Image processing based fire accidents detection," International Journal of Emerging Technology and Advanced Engineering, vol. 2, no. 2, pp. 87-95, 2012.
- [10] Y. L. Wang and J. Y. Ye, "Research on the algorithm of prevention fire accidents disaster in the Poyang Lake Ecological Economic Zone," Advanced Materials Research, vol. 518-523, pp. 5257-5260, 2012.



SJIF: 8.423



INTERNATIONAL
STANDARD
SERIAL
NUMBER
INTERNATIONAL CENTRE



INTERNATIONAL JOURNAL OF INNOVATIVE RESEARCH

IN SCIENCE | ENGINEERING | TECHNOLOGY

 **9940 572 462**  **6381 907 438**  **ijirset@gmail.com**



www.ijirset.com

Scan to save the contact details