



e-ISSN: 2319-8753 | p-ISSN: 2347-6710

IJRSET

International Journal of Innovative Research in
SCIENCE | ENGINEERING | TECHNOLOGY



INTERNATIONAL JOURNAL OF INNOVATIVE RESEARCH

IN SCIENCE | ENGINEERING | TECHNOLOGY

Volume 13, Issue 4, April 2024

ISSN INTERNATIONAL
STANDARD
SERIAL
NUMBER
INDIA

Impact Factor: 8.423

 9940 572 462

 6381 907 438

 ijirset@gmail.com

 www.ijirset.com

CNC Laser Engraver Machine 3d Model

Dr. M. Mahesh¹, Sreedhar², T. Jyothirmai³, K. Jaswanth⁴, D. Navaneeth⁵

Associative Professor, Department of Electronics and Communication Engineering, TKR College of Engineering and Technology, Telangana, India ¹

B. Tech Students, Department of Electronics and Communication Engineering, TKR College of Engineering and Technology, Telangana, India ^{2,3,4,5}

ABSTRACT: The main objective of the project is used to create the permanent marks, logos, barcodes and designs on the surface of the material. Laser engraver works on directing the High-Power Laser beam through optic on materials. In laser engrave method two ways one is by cutting material and other is without cutting by simply changing the color. In present work the cnc laser engraving is used to engrave for different materials like wood, aluminium, and sheet metals and also composites has been conducted. Laser engraver responds to G codes which can be generated by the software. The specialty of this machine is the user can modification the tool simply whenever they desire to perform several operations like an engraving object in foam sheets, mdf board, materials etc and turning out a 2d drawing for specific objects.

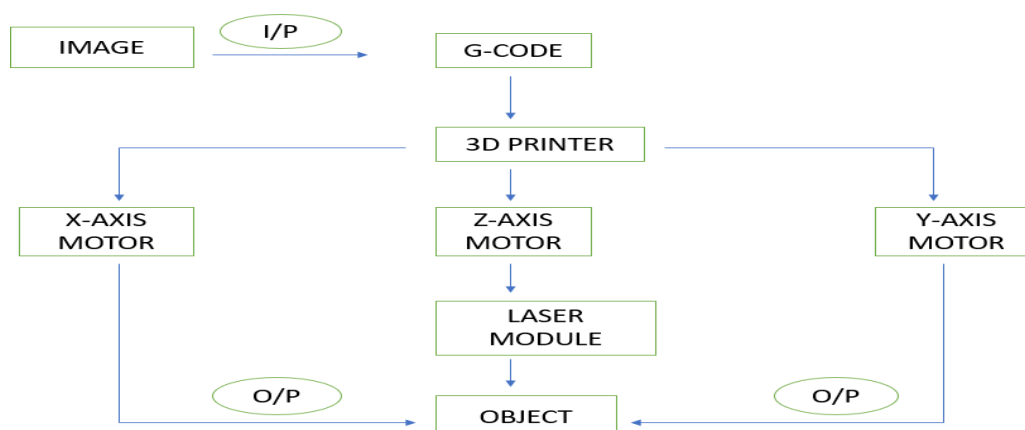
KEY WORDS: Laser, Creadity Workshop Software, SD Card, Creadity Ender-v2 3D Model.

I. INTRODUCTION

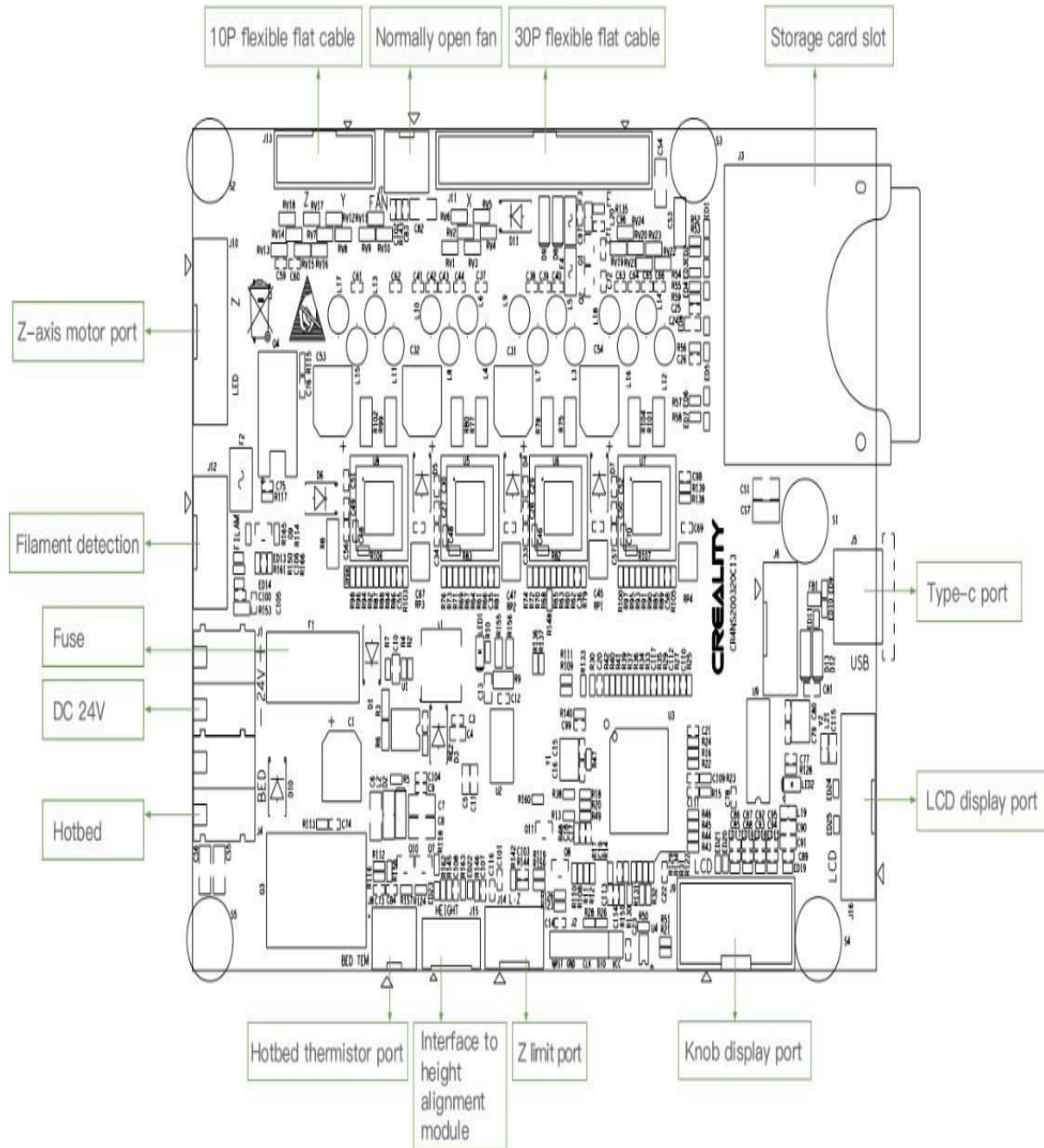
The CNC machine is utilized within the manufacturing sector that includes the utilize of computers to control machine devices. Apparatuses that can be controlled in this way incorporate machines, switches and grinders. On the surface, it may seem like a typical PC controls the machines, but the computer's special computer program and control support are what truly sets the system apart for utilize in CNC machining. Beneath CNC Machining, machine devices function through numerical control. A computer program is customized for a question and the machines are modified with CNC machining dialect (called G-code) that basically controls all highlights like nourish rate, coordination, area and speeds. With CNC machining, the computer can control correct situating and velocity. CNC machining is utilized in fabricating both metal and plastic parts. Inspiring from this CNC technology and progressive alter within the world of digital gadgets & Microcontroller. The thought behind this venture is to make a little Two Hub CNC switch

Which can etch 2D and Gray scaled images or pictures with offer assistance of tall watt burning laser module on surface which can be a paper, wood, calfskin, plastic, froth etc. It employments two stepper motors as linear actuators on each hub X, Y. Whereas etching, the correct synchronization of all this hub i.e. stepper engines, is most challenging task. As proposed thought, the machine will be built inside a scaled down structure. Entire structure will be built from wooden or aluminium segments. To keep a lowest weight as conceivable, aluminum will be favoured. The X, Y actuators will be made with tall torque mechanical stepper motors & 3d printer. A laser engraving machine is a specialized piece of equipment that utilizes laser beams to engrave intricate designs, letters, or numerical patterns onto various materials. This process involves precision and accuracy, resulting in customized and visually appealing creations.

II. BLOCK DIAGRAM



Schematic Diagram



III. WORKING

3D printer engravers work excitingly. This is where the material is vaporized into fumes to engrave permanent deep marks. The process is done by a laser beam which acts like a chisel incising marks by removing layers from the material's surface. The laser hits a specific area with a massive energy level to generate the heat required for vaporization. The results will be well-detailed 3D objects with a perfectly marked print.

Therefore, you can also own your [3D printer laser engraver](#) from Snapmaker. How does it work? Or how do you set it up for work? This article will point out various steps to follow to get the desired print. The process is quite simple and easy to follow. The method includes the following.



The option is setting the work origin, where you will need to find out where the engraving and cutting will be by setting the work origin. It corresponds to the (0, 0) coordinate origin in the software Snapmaker Luban. The workflow in this procedure includes the following.

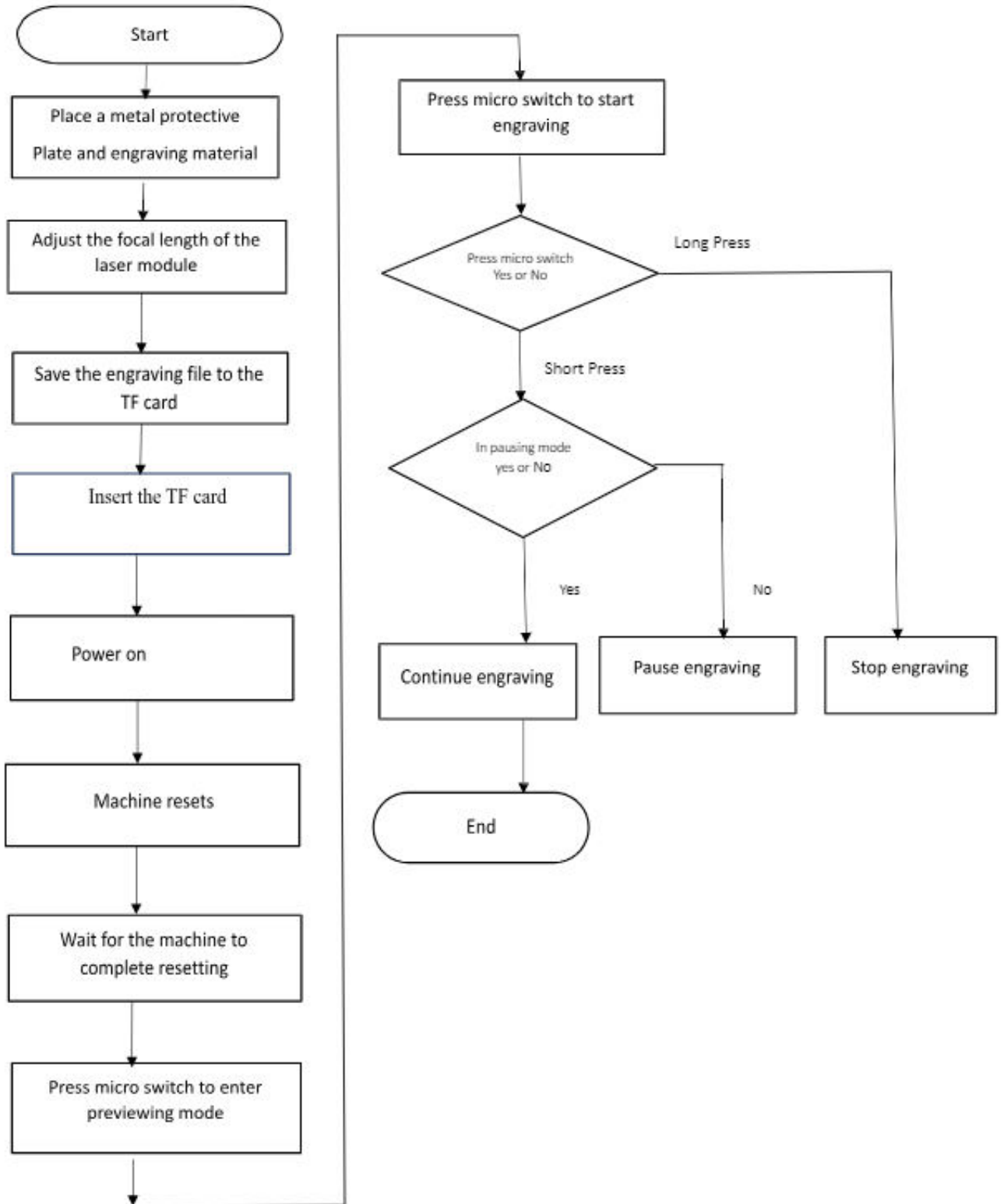
- Measuring the focal length, but note that if the focal length is already calculated, you can skip this first procedure of measuring the focal length.
- Fixing material to the platform
- Prepare the file
- Generate a G-code
- Transfer the G-code file to the machine
- Set the material's thickness
- Set work origin and run the boundary
- Then start engraving and cutting

IV. METHODOLOG

The methodology for creating for CNC based laser engraver machine 3d model involves in three stages: Constructing the mechanical frame, assembling the electronics system and installing the control and computing system.

- **Frame Construction:** The mechanical frame of the CNC-based laser engraver must be designed and built first. Throughout the engraving process, the frame's solidity and rigidity guarantee exact movement.
- **Integration of the Electrical System:** The electrical components are then incorporated into the system. This include attaching the power supply, limit switches, stepper motors, and laser module. In order to avoid interference and guarantee safe operation, wiring and appropriate insulation are essential.
- **Software and Control Configuration:** G-code instructions are interpreted by the CNC controller, which is often an Arduino or a comparable microcontroller. Computer Aided Design or creativity workshop software creates G-code by specifying the laser engraver's toolpath. Based on G-code instructions, the controller calculates the laser's direction, intensity, and speed.

Flow Chart

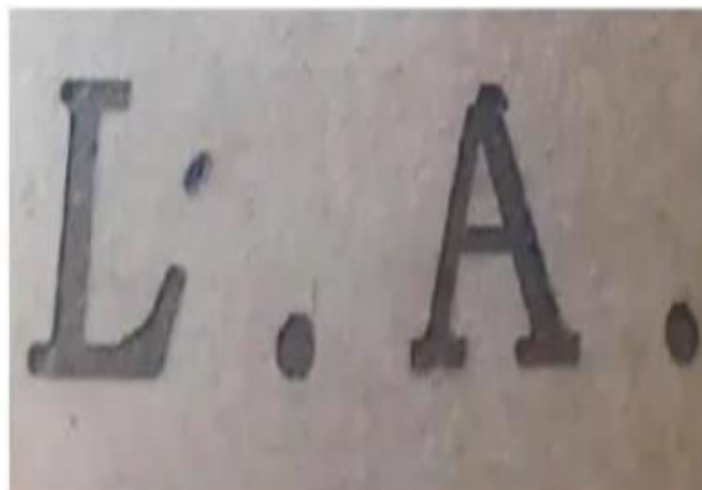
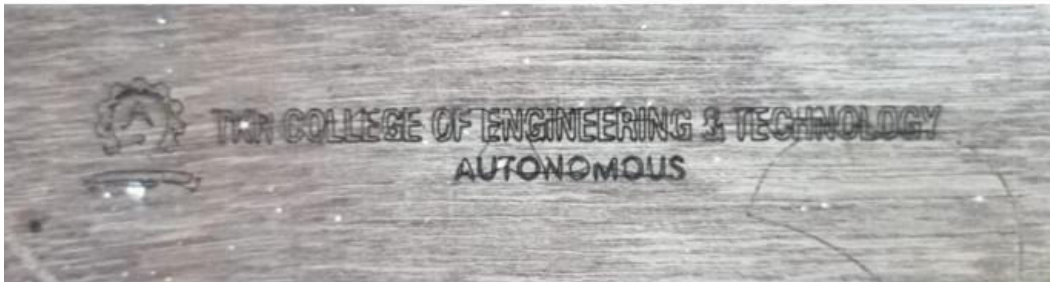


V. EXPERIMENTAL SET-UP



VI. RESULT

When burning, however, no high speeds are used, compared to 3D printing. Therefore, there are no shocks due to dynamic forces. Weight gain will only be noticeable on the print head. If the laser module is installed, we must only adjust the laser focus, which is very simple. It is important to use protective goggles otherwise you may experience eye damage. It is equally important that the machine is operated in a well-ventilated room or a smoke extraction must be used.



VII. ADVANTAGES

- Precision and Accuracy
- Speed and Efficiency
- Reduced material waste
- Durability and Surface quality
- Flexibility
- Reliability and Longevity

VIII. APPLICATION

- Woodworking industry
- Mold industry
- Personalization and Gifts
- Product branding and Identification
- Wood, Plastic and Acrylic Engraving
- Signage production



IX. CONCLUSION

As globalization and industrial developments have been increasing, machines have gone from manual to a automatic control unit. the automatic control units have a very user-friendly space, bringing in light to the our project is a perfect example of an automatic unit and a portable one too. The laser engraving machine works with a computer numerical control that writes and read G-codes instruction to drive to fabricate components with a proper material removal rate. G-codes are commands for machine given by the user to follow so that they can operate without much human control. The rate of work is fast and clear.

REFERENCES

The sites which were used while doing this project:

1. www.wikipedia.com
2. www.allaboutcircuits.com 3. www.howstuffworks.com



INTERNATIONAL
STANDARD
SERIAL
NUMBER
INDIA



INTERNATIONAL JOURNAL OF INNOVATIVE RESEARCH

IN SCIENCE | ENGINEERING | TECHNOLOGY

 9940 572 462  6381 907 438  ijirset@gmail.com



www.ijirset.com

Scan to save the contact details