



e-ISSN: 2319-8753 | p-ISSN: 2347-6710

IJRSET

International Journal of Innovative Research in
SCIENCE | ENGINEERING | TECHNOLOGY



INTERNATIONAL JOURNAL OF INNOVATIVE RESEARCH

IN SCIENCE | ENGINEERING | TECHNOLOGY

Volume 13, Issue 4, April 2024

ISSN INTERNATIONAL
STANDARD
SERIAL
NUMBER
INDIA

Impact Factor: 8.423

9940 572 462

6381 907 438

ijirset@gmail.com

www.ijirset.com

Paddy Disease Detection Using CNN

Dr.T. Ganesan, Mr.G. Arulselvan, K. Nidhishkumar, M. Nepoleon, S. Vignesh,

Professor, E.G.S. Pillay Engineering College, Nagapattinam, India

Assistant Professor, E.G.S. Pillay Engineering College, Nagapattinam, India

UG Student, Department of Computer Science and Engineering, E.G.S. Pillay Engineering College,
Nagapattinam, India

UG Student, Department of Computer Science and Engineering, E.G.S. Pillay Engineering College,
Nagapattinam, India

UG Student, Department of Computer Science and Engineering, E.G.S. Pillay Engineering College,
Nagapattinam, India

ABSTRACT: The pivotal role of the agricultural sector in global food production underscores the critical importance of maintaining crop health to meet increasing food demands sustainably. Paddy crops, prevalent in many regions worldwide, face significant vulnerability to various diseases, which can profoundly affect both yield and quality. Detecting these diseases early and accurately is imperative for timely intervention and effective crop management. This study introduces a holistic approach to paddy crop disease detection, Convolutional Neural Networks (CNN). The methodology commences with the acquisition of high-resolution images of paddy fields through advanced imaging techniques, capturing detailed visual characteristics of the crop. Experimental findings showcase the efficacy of the proposed method in precisely identifying and categorizing diverse paddy crop diseases. Evaluation metrics such as precision, recall, and F1-score validate the system's performance. The fusion of CNN not only enhances disease detection accuracy but also fortifies the system's resilience, enabling adaptation to varying environmental conditions and disease patterns. This research contributes significantly to the advancement of precision agriculture, offering a dependable and automated solution for paddy crop disease detection. The proposed methodology holds promise for extension to other crop varieties, laying the groundwork for smart farming systems aimed at optimizing agricultural practices and ensuring global food security.

KEYWORDS: Convolutional Neural Network (CNN), F1-Score. Precision, Recall.

I. INTRODUCTION

The global agricultural landscape grapples with the urgent task of ensuring food security and sustaining crop production to meet the escalating needs of a growing populace. Paddy crops, serving as a staple food source for millions, face heightened susceptibility to a plethora of diseases capable of inflicting significant harm on crop yield and quality. Prompt and precise disease detection is imperative for implementing effective management strategies and curtailing agricultural losses. Traditional methods of disease detection, reliant on manual inspection, prove laborious and may lack precision. To augment farmers efforts and enhance crop disease detection accuracy, research has explored the utilization of various machine learning algorithms, including artificial neural networks. Recent advancements in agricultural technology have introduced more efficient and automated solutions, with computer vision and machine learning techniques demonstrating considerable promise in the realm of crop disease detection.

This study confronts the challenges inherent in paddy crop disease detection by proposing an innovative approach that harnesses the strengths of Convolutional Neural Networks (CNN). It renowned for its prowess in classifying multidimensional data, is leveraged to categorize images based on distinctive features associated with paddy crop diseases. Simultaneously, CNN is deployed to extract intricate visual representations directly from the image data, augmenting the system's ability to discern nuanced patterns. The amalgamation of CNN endeavors to furnish a comprehensive and precise solution for automated paddy crop disease detection. This research capitalizes on advancements in computer vision and machine learning to devise a robust system capable of navigating the complexities of real-world agricultural environments. The proposed methodology not only enriches the domain of precision agriculture but also holds promise for adaptation to diverse crop varieties, thereby facilitating broader applications in smart farming systems.

In the ensuing sections, we delve into the methodology, data acquisition, and experimental outcomes, underscoring the synergistic interplay CNN within the context of paddy crop disease detection. The findings of this study contribute to ongoing endeavors aimed at refining agricultural practices, fostering sustainability, and addressing the global imperatives of 21st-century food production. The impetus driving this research lies in bridging the chasm between traditional disease detection methodologies and the capabilities conferred by advanced technologies. Harnessing the potential of machine learning and computer vision has the potential to revolutionize the identification and management of paddy crop diseases, thereby bolstering agricultural productivity and fostering food sustainability. The integrated application of CNN not only enhances disease detection accuracy but also affords a more holistic understanding of the intricate visual attributes associated with paddy crop diseases. This research augments the broader domain of precision agriculture, furnishing a scalable and adaptable solution extendable to diverse crops, thus addressing agricultural challenges on a global scale.

Paddy fields pose distinctive challenges, including diverse environmental conditions, symptom variations in diseases, and the exigency for real-time monitoring. Conventional methods often falter in navigating these challenges, necessitating the exploration of innovative approaches capable of surmounting these constraints. The principal objectives of this study encompass the development of a resilient and precise paddy crop disease detection system, assessment of its performance under diverse conditions, and validation of the feasibility of CNN for augmented outcomes. Ultimately, the aim is to equip farmers and agricultural practitioners with a dependable tool for early disease detection and management.

II. LITERATURE REVIEW

Recently, researchers such as R. R. Atole and D. Park have investigated paddy disease detection using Convolutional Neural Network (CNN) classifiers to discern the presence of common rice leaf diseases. Konstantinos Ferentinos has also contributed to this field, focusing on paddy crop disease detection and diagnosis. Additionally, Constantine et al. developed a deep learning method based on CNN models for plant disease detection and diagnosis, while Marco et al. proposed a novel two-level neural network architecture for classifying plant diseases. Furthermore, Y. Lu, S. Yi, N. Zeng, Y. Liu, and Y. Zhang explored recent advancements in deep learning-based CNNs for detecting rice diseases and pests from images taken in diverse landscapes with varying backgrounds. On a related note, Y. Es-saad, T. El Massi, M. El Yassa, D. Mammass, and A. Benazoun devised a machine vision system for automatic plant leaf disease detection utilizing a serial combination technique of two SVM classifiers, achieving notable improvements in comparison to existing methods. Similarly, Shruthi U, Nagaveni V, and Raghavendra B K conducted a review highlighting various machine learning classification techniques, among which CNN demonstrated superior accuracy and the ability to detect numerous diseases across multiple crops. V. Vanitha proposed an automatic disease detection system using deep neural networks, achieving a high accuracy of 99.53% for identifying three different paddy diseases along with healthy leaf images. Lastly, Shamim Mahbub, Md. Abu Nasim, Md. Jahid Hasan, and Md. Shahin Alom integrated Deep Convolutional Neural Network (DCNN) to identify and classify nine types of rice diseases with an impressive accuracy of 97.5%. Additionally, Anuradha Badge explored the impact of machine learning techniques on crop disease detection in Indian agriculture, employing Canny's edge detection algorithm to efficiently detect wheat crop diseases, thereby aiding farmers in timely intervention.

III. RESEARCH METHODOLOGY

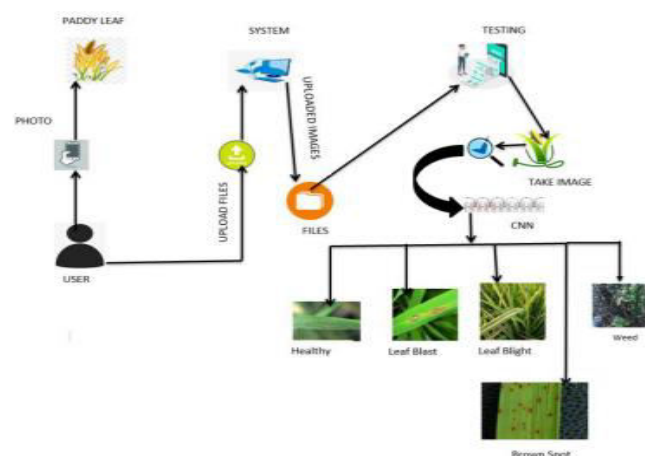


Figure 1: Methodology

Margin Maximization

CNN aim to identify the hyperplane that not only segregates classes but also maximizes the margin. This emphasis on margin maximization renders SVMs robust and less susceptible to overfitting, as they prioritize crucial data points near the decision boundary.

Regularization Parameter

It strikes a balance between margin maximization and minimization of classification errors. Higher values of C lead to fewer misclassifications but potentially narrower margins and overfitting risks, while lower values prioritize wider margins at the expense of more misclassifications.

Classification and Regression

Although renowned for classification tasks can also undertake regression by fitting a hyperplane that best captures the relationship between input variables and continuous output values. It find applications across diverse domains, including image recognition, text classification, bioinformatics, finance, and more, where precise classification or regression tasks are imperative.

Its popularity due to their efficacy in handling intricate datasets, robustness against overfitting, and effectiveness in high-dimensional spaces. However, they may incur computational expenses when dealing with large datasets, necessitating meticulous tuning of hyperparameters like kernel function selection and regularization parameters to optimize performance.

IV. EXPERIMENTAL RESULTS AND DISCUSSION

Phase 1: Convolutional Operation The initial phase of the strategy involves executing the convolutional operation. This step entails the deployment of a characteristic detector, functioning akin to a neural network filter. We also delve into discussions surrounding feature maps, the acquisition of learning parameters for these maps, techniques for pattern recognition, stages of comprehension, and the interpretation of outcomes.



Figure 2: Upload Image

Step (1b): ReLU Layer The subsequent phase of this stage delves into the Rectified Linear Unit (ReLU) or ReLU. We delve into ReLU layers and delve into the mechanics of linearity within convolutional neural networks. While a deep understanding of CNNs isn't necessary, a brief overview can aid in grasping the concepts.

Step 2: Pooling Layer In this segment, we explore pooling and its general functionality. Specifically, we examine various pooling techniques, with a focus on maximum pooling. Additionally, we discuss alternative approaches such as average (or sum) pooling. This section concludes with a practical demonstration utilizing a visual interactive tool, facilitating a clearer understanding of the concept as a whole.

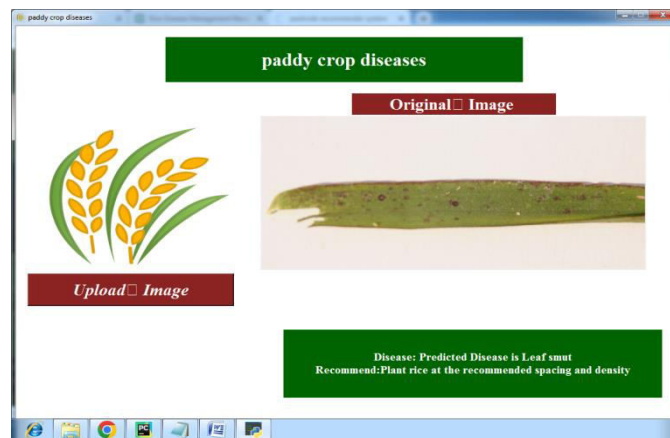


Figure 3: Paddy Crop Disease

Step 3: Flattening This step entails a brief overview of the flattening process, elucidating the transition from pooled to flattened layers within convolutional neural networks.

Step 4: Full Connection This phase consolidates the concepts discussed throughout this section, fostering a comprehensive understanding of how convolutional neural networks operate and how the resultant "neurons" acquire the ability to classify images effectively.

1. Input Layer: Within the input layer, images serve as the input data. Here, we designate the pre-trained MobileNet model as our input layer.
2. Convolution Layer: The convolution layer transforms the image data into a matrix format. The matrix size employed is 1024 x 1024 (rows x columns)
- 3.

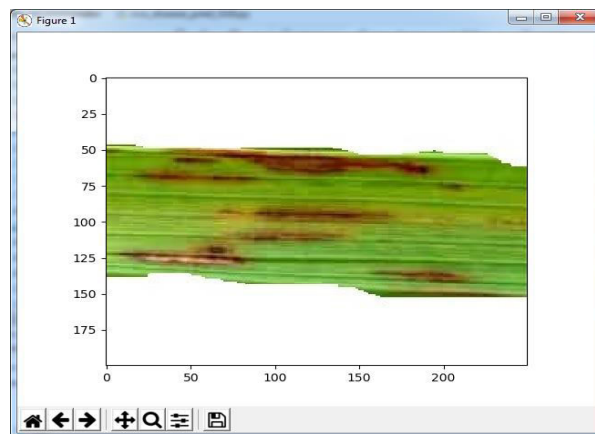


Figure 4: Graphical Analysis

4. Pooling Layer: Within the pooling layer, numerical values are stored. To convert numerical data into binary data, we employ the machine learning algorithm known as SoftMax, a supervised learning algorithm. In the SoftMax layer, numerical data is transformed into binary form.

5. In the flatten layer and dense layers, the classes from the entire dataset (comprising 5 types) are encoded into binary data format. We utilize the fit_generator method to store this data in the .h5 format, where the model serves as a container for storing the binary data.

V.CONCLUSION

In this study, we have successfully developed an application capable of detecting paddy field diseases. Our approach integrates Convolutional Neural Networks (CNN) with transfer learning using the MobileNet architecture. We evaluated our method using a dataset comprising rice leaf images encompassing four distinct types: Brown Spot,

Healthy, Leaf Blight, and Weed. Following training, we conducted testing on the dataset, as well as classification of uploaded images.

Moreover, our project delves into recent research on disease detection and classification across various plants and fruits, such as rice, tea, mango, cassava, sugar beet, and maize seedlings, among others. We meticulously reviewed a multitude of papers, examining research outcomes related to diverse rice plant diseases and other botanical specimens. These analyses were conducted according to several crucial criteria, including image dataset size, number of disease classes, processing techniques, segmentation methods, classification types, and classification accuracy.

Furthermore, our survey paper provides insights into recent investigations concerning the detection of various rice and plant diseases, encompassing Leaf Blast (LB), Brown Spot (BS), Sheath Blight (SB), Leaf Scald (LS), Bacterial Leaf Blight (BLB), Leaf Spot Disease, Mango Leaf Diseases, and Cassava Mosaic Detection, utilizing Deep Learning (DL) models.

VI. FUTURE WORK

Moving forward, our objective is to expand our image database by gathering additional field images from agricultural research institutes, thereby enhancing the accuracy of our detection system. Additionally, we plan to implement a cross-validation process to validate our findings effectively. Furthermore, we aim to explore more advanced deep learning models and incorporate state-of-the-art research for comparative analysis. Leveraging the developed model, we envision the potential to detect various foliage diseases affecting key crops in India, extending the applicability of our approach to broader agricultural contexts.

REFERENCES

- [1] T. Gupta, "Plant leaf disease analysis using image processing technique with modified SVM-CS classifier," *Int. J. Eng. Manag. Technol.*, no. 5, pp. 11-17, 2017.
- [2] Y. Es-saady, T. El Massi, M. El Yassa, D. Mammass, and A. Benazoun, "Automatic recognition of plant leaves diseases based on serial combination of two SVM classifiers," *International Conference on Electrical and Information Technologies (ICEIT)* pp. 561-566, 2016.
- [3] P. B. Padol and A. A. Yadav, "SVM classifier based grape leaf disease detection," *Conference on Advances in Signal Processing (CASP)*, pp. 175-179, 2016.
- [4] L. Liu and G. Zhou, "Extraction of the rice leaf disease image based on BP neural network," *International Conference on Computational Intelligence and Software Engineering*, pp. 1-3, 2009.
- [5] S. Arivazhagan and S.V. Ligi, "Mango Leaf Diseases Identification Using Convolutional Neural Network," *International Journal of Pure and Applied Mathematics*, vol. 120, no. 6, pp. 11067-11079, 2008.
- [6] B. Liu, Y. Zhang, D. He and Y. Li, "Identification of Apple Leaf Diseases Based on Deep Convolutional Neural Networks Symmetry," X. X. & Suen, C. Y. A novel hybrid CNN-SVM classifier for recognizing handwritten digits. *Pattern Recognition*, vol. 45, pp. 1318-1325, 2012.
- [7] Y. Lu, S. Yi, N. Zeng, Y. Liu, and Y. Zhang, "Identification of Rice Diseases Using Deep Convolutional Neural Networks," *Neurocomputing*, 267, pp. 378-384, 2017.
- [8] R. R. Atole, D. Park, "A Multiclass Deep Convolutional Neural Network Classifier for Detection of Common Rice Plant Anomalies," *International Journal Of Advanced Computer Science And Applications*, vol. 9, no. 1, pp. 67-70, 2018.
- [9] V. Singh, A. Misra, "Detection of Plant Leaf Diseases Using Image Segmentation and Soft Computing Techniques," *Information Processing in Agriculture*, Vol. 4, no. 1, pp. 41-49, 2017.
- [10] P. Konstantinos Ferentinos, "Deep Learning Models for Plant Disease Detection and Diagnosis," *Computers and Electronics in Agriculture*, vol. 145, pp. 311-318, 2018.
- [11] S. P. Mohanty, D. P. Hughes, M. Salath'e, "Using Deep Learning for Image-Based Plant Disease Detection," *Frontiers in plant science*, vol. 7.
- [12] S. Xie, T. Yang, X. Wang, and Y. Lin, "Hyper-class augmented and regularized deep learning for finegrained image classification," *IEEE Conference on Computer Vision and Pattern Recognition, CVPR2015*, pp. 2645-2654, June 2015.
- [13] Cui D., et al., "Image Processing Methods for Quantitatively Detecting Soybean Rust from Multi-spectral Images", *Biosystems engineering*, Vol.107, Issue.3, 2010, pp.186-193.
- [14] Vibhute A. and Rhode S K, "Applications of Image Processing in Agriculture: A Survey", *International Journal of Computer Applications*, Vol. 52, Issue. 2, August 2012, pp.34-40.
- [15] Barbedo J C A, "Digital Image Processing Techniques for Detecting, Quantifying and Classifying Plant Diseases", *SpringerPlus*, Vol.2, Issue.660, 2013, pp.1-12.
- [16] AuziAsfarian, et al., "Paddy Diseases Identification With Texture Analysis Using Fractal Descriptors Based On Fourier Spectrum", *International Conference On Computer, Control, Informatics And Its Applications*, 2013.



- [17] S.A. Ramesh Kumar, K.Ramesh Kumar, “a Study on Paddy Crops Disease Prediction Using DataMining Techniques”, International Journal of Data Engineering (IJDE), Singaporean Journal of Scientific Research (SJSR), Vol.7, No.1, Pp. 336- 347, 2015.
- [18] P.Revathi, M.Hemalatha, “Advance Computing Enrichment Evaluation of Cotton Leaf Spot Disease Detection U sing Image Edge detection”, ICCCNT'12.
- [19] Mrs. Shruti U, Dr.Nagaveni V, Dr.Raghavendra B K “A review on machine learning classification techniques for plant disease detection” 5th International Conference on Advanced Computing & Communication Systems (ICACCS) 2019.
- [20] V. Vanitha “Rice disease detection using deep learning”, International Journal of Recent Technology and Engineering (IJRTE) ,Vol 7,Issue5S3, Feb2019.
- [21] Md. Jahid Hasan, Shamim Mahbub, Md. Abu Nasim, Md. Shahin Alom “Rice disease identification and classification by integrating support vector machine with deep convolutional neural network”,2019. International Journal of Engineering Research & Technology (IJERT) ISSN: 2278-0181 Published by, www.ijert.org NCCDS - 2020 Conference Proceedings Volume 8, Issue 13 Special Issue - 2020 194
- [22] Anuradha badge “ Crop disease detection using Machine learning : Indian agriculture”, International Research Journal of Engineering and Technology (IRJET) ,05issue :09, Sept 2018.



INTERNATIONAL
STANDARD
SERIAL
NUMBER
INDIA



INTERNATIONAL JOURNAL OF INNOVATIVE RESEARCH

IN SCIENCE | ENGINEERING | TECHNOLOGY

 9940 572 462  6381 907 438  ijirset@gmail.com



www.ijirset.com

Scan to save the contact details