



e-ISSN: 2319-8753 | p-ISSN: 2347-6710

# IJRSET

International Journal of Innovative Research in  
**SCIENCE | ENGINEERING | TECHNOLOGY**



# INTERNATIONAL JOURNAL OF INNOVATIVE RESEARCH

IN SCIENCE | ENGINEERING | TECHNOLOGY

Volume 13, Issue 4, April 2024

**ISSN** INTERNATIONAL  
STANDARD  
SERIAL  
NUMBER  
INDIA

Impact Factor: 8.423

9940 572 462

6381 907 438

[ijrset@gmail.com](mailto:ijrset@gmail.com)

[www.ijrset.com](http://www.ijrset.com)

# Driver Drowsiness Detection System to Reduce Accident

**Prof. N. B. Madke, Ritesh Patil, Bhavesh Patil, Pushkar Patil, Jayesh Patel**

Department of Computer Engineering, Sandip Institute of Engineering and Management, Nashik, Maharashtra, SPPU, India.

Assistant Professor, Sandip Institute of Engineering and Management, Nashik, Maharashtra, SPPU, India

**ABSTRACT:** Driver fatigue stands out as a significant contributor to accidents worldwide. Recent years have witnessed a surge in vehicle accidents attributable to driver fatigue. A direct approach to gauge driver fatigue involves assessing their level of drowsiness. Hence, detecting driver drowsiness assumes paramount importance in safeguarding lives and property. The focus of this project lies in crafting a prototype for a drowsiness detection system. Operating in real-time, this system continuously captures images and evaluates the state of the driver's eyes based on a predefined algorithm, issuing alerts when necessary.

Numerous accidents stem from driver drowsiness, emerging as a critical factor in contemporary roadway incidents. Current statistics underscore the prevalence of drowsiness-induced accidents, resulting in numerous fatalities. Over 30% of accidents are attributed to drowsiness, necessitating the development of a proactive system capable of detecting and notifying drivers of impending drowsiness, thereby saving lives.

This project introduces a methodology for driver drowsiness detection wherein the driver's vigilance is continuously monitored via webcam. Employing image processing techniques, the system primarily focuses on the driver's face and eyes. It extracts facial features and discerns eye blinking patterns, crucial indicators of drowsiness. This proposed system serves the dual purpose of enhancing driver and road safety. Initially, the webcam captures the driver's facial image, followed by face detection to pinpoint the eye regions, which serve as templates for subsequent eye tracking. Additionally, an ultrasonic sensor is utilized to detect nearby objects, enhancing the system's efficacy. The tracked eye images are then analyzed to detect drowsiness, triggering warning alarms when necessary.

**KEYWORDS:** Python, Webcam, Haar-cascade frontal face, Drowsiness Detection, Distraction, Eye detection, Eye Tracking, Face Detection, Object Detection.

## I. INTRODUCTION

Transportation is a great invention that allows human beings to explore the other places for a long-range distance. In this contemporary era, traffic is a basic need for every human being and the number of transportations on the road is increasing obviously year by year. This situation causes a traffic jam which leads to the time of travel become longer. This may cause the driver feel drowsiness during the long term of traveling time. Drowsy driving is one among the key causes behind fatal road accidents. one among the recent study shows that one out of 5 road accidents are caused by drowsy driving which is roughly around 21 percent of road accidents, and this percentage is increasing each year as per global status report on road safety 2015, supported the information from 180 different countries. This certainly highlights the very fact that across the planet the whole numbers of road traffic deaths are very high because of driver's drowsiness. Driver fatigue, drink-and-drive and carelessness are coming forward as major reasons behind such road accidents. Many lives and families have gotten affected because of this across various countries. All this led to the event of Intelligent Driver Assistance Systems time drowsy driving detection is one in every of the most effective possible major that may be implemented to help drivers to create them awake to drowsy driving conditions. Such driver behavioral state detection system can help in catching the motive force drowsy conditions early and might possibly avoid mishaps. Heavy traffic, increasing automotive population, adverse driving conditions, tight commute time requirements and also the work loads are few major reasons behind such fatigue.

## II. LITERATURE REVIEW

Several studies in a variety of ways have been done on Driver Drowsiness detection system. In [1] authors propose It uses machine learning techniques to predict driver states and emotions, providing information that improves road safety. This paper focuses on developing a contactless system that can detect drowsiness and warn in a timely manner. The system monitors the driver's eyes with a camera. Algorithms can be developed to detect early signs of driver fatigue and avoid accidents. When signs of fatigue are detected, the seatbelt sounds and vibrates to alert the driver. Warnings are disabled manually, not automatically. This paper uses an algorithm that is faster than PERCLOS. The system detects driver fatigue by processing the eye area. After capturing an image, the first stage of processing is facial recognition. when you blink. Tian et Qin [2] build a system that checks the driver eye states. Your system uses the Cb and Cr components of the YCbCr color space. The system finds faces with the vertical projection function and eyes with the horizontal projection function. Once the eye locations are identified, the system uses the complexity function to compute the eye state. Hong et al. [4] Define a system that detects real-time eye conditions to identify driver drowsiness. Face region recognition is based on the optimized method of Jones and Viola [5]. The eye area is obtained by horizontal projection. Finally, a new complexity function with dynamic thresholds for identifying eye conditions. Authors [10] propose a system that uses video images to detect driver fatigue, called DriCare. B. Yawning, blinking, and time with eyes closed without the device on the body. Due to the shortcomings of the previous algorithms, we introduce a new face tracking algorithm to improve the tracking accuracy. Furthermore, they developed a new face region detection method based on 68 key points. These face regions are then used to assess the driver's condition. By combining eye and mouth functions, DriCare can issue fatigue warnings to drivers. Experimental results showed that DriCare achieved an accuracy of about 92%.

## III. AIM & OBJECTIVES

The overarching aim of the project is to develop a robust prototype for a drowsiness detection system aimed at enhancing driver and road safety. This system is designed to address the pressing issue of driver fatigue, which significantly contributes to vehicular accidents worldwide. The primary objective is to implement a real-time monitoring system that continuously captures images of the driver's face and evaluates their level of drowsiness using advanced image processing techniques. By focusing on facial features, particularly the eyes, the system aims to accurately detect signs of drowsiness, such as eye blinking patterns. Furthermore, the project aims to integrate additional sensors, such as ultrasonic sensors, to enhance the system's ability to detect potential hazards on the road. Ultimately, the project seeks to provide a proactive solution to mitigate the risks associated with driver fatigue by issuing timely alerts to drivers, thereby preventing accidents and saving lives.

## IV. METHODOLOGY

Image Processing: Face and eye detection is a very vital and challenging issue in the field of image processing. It is also a crucial step in the recognition of the face. Open Source Computer Vision Library (Open CV) is used for the implementation of the Haar Cascade Classifier. In this project, the driver's sleepiness detection requires a video sensor to detect the eyes of the drivers. The driver's drowsiness level can be further determined by checking the eye blink rate. The methods used to detect face and eye, including eye blinks using the Haar Cascade Classifier and the Eye Aspect Ratio, respectively. Four key steps must be carried out in the Haar Cascade Classifier. The steps are Haar Feature, Integral Image, AdaBoost and Cascade Classifier. Besides Eye Aspect Ratio is used to measure eye blinks (open and close eyes) using a ratio formula based on both the width and height of the eyes.

Haar Cascade Classifier : The Haar Cascade Classifier is one of the few object recognition methods capable of detecting faces. It offers high-speed computing depending on the number of pixels within the rectangle and not depending on the pixel value of the image. This method has four steps to detect an object, namely a Haar-like feature, an Integral Image, AdaBoost Learning and a Cascade Classifier [24]. Haar characteristics are the core component of the Haar Cascade Classifier for facial detection. The presence of a feature in the given image can be detected using Haar feature. Each feature results in a single value determined by the aggregate of the pixels under the black rectangle. The Haar-like feature is a rectangular feature that provides a specific indication of the image for rapid face detection [25] In order to obtain the object detection value, the Haar-like feature value was calculated using an integral image. It starts scanning the image to detect the face from the top left corner and ends the process of face detection at the bottom right of the image to detect the face from the image. Integral image could measure values accurately and instantly by



generating a new image presentation using the region value previously scanned with specific Haar-like features. The value at any point (x, y) is the summed table of the aggregate of all the pixels above and the left of (x, y) inclusive.

Eyes Aspect ratio : Drowsiness detection system is dominantly requiring detection of eye blink movement. The recorded blink detection through computer webcam can be done by calculating EAR using OPENCV platform and Dlib prediction, also known as Dlib pre trained Neural network based prediction. The EAR can be calculated based on the eye coordinates returned from OPENCV using the EAR formula.

## V. PROPOSED SYSTEM

### ALGORITHM:

#### I. Haar Cascade Frontal Face:

Haar like features are complete set of 2-D Haar functions. These Haar functions are used to encode a specific object in given image. Haar functions consist of two or more rectangular regions, which are enclosed in a template. Haar features are used to detect human frontal faces in digital photographs and to detect cardiac structures from magnetic response imaging (MRI). Haar features give more accurate and faster response than other object detectors. The result of Haar feature function consists of K rectangles. The main advantage of Haar features is that, it provides a very attractive trade-off between accuracy and evaluation's speed. Haar features are differing according to the template, by no of rectangles and orientation of the rectangles. The Haar features are mainly Edge features, Line features and Center-surround feature. Haar-like features are digital image features used in object detection. Or we can say that these are rectangle shaped dark and light areas having similar kind of features like our face. So basically we move those features throughout our face to find the output of each feature.

For example:

All faces share some similar properties

1. The eyes region is darker than the upper-cheeks.
2. The nose bridge region is brighter than the eyes.

So this features of face are used for developing haar like features.

Each feature is related to a special location in the face.

Output of Rectangle features:

We will move the related kind of rectangle throughout the face to get different values.

1. Value =  $\Sigma$  (pixels in black area) -  $\Sigma$  (pixels in white area).
2. Three types: two-, three-, four-rectangles, Viola and Jones used two-rectangle features.

#### Haar-Cascade algorithm:

**Step 1:** Load the required XML classifiers

**Step 2:** Load our input video in grayscale mode

**Step 3:** Find the faces in the image. If faces are found, it returns the positions of detected faces as Rect (x,y,w,h)

**Step 4:** Get the locations and create a ROI (Region of interest) for the face and apply eye detection on this ROI

**Step 5:** End

#### II. Face landmark shake predictor

##### Facial landmark prediction (FLP) algorithm:

Every Human Face has 68 distinct points on his face. The position on each of these 68 facial points is stored in a matrix. So, with the help of this algorithm, the positions of both left eye and right eye can be obtained.

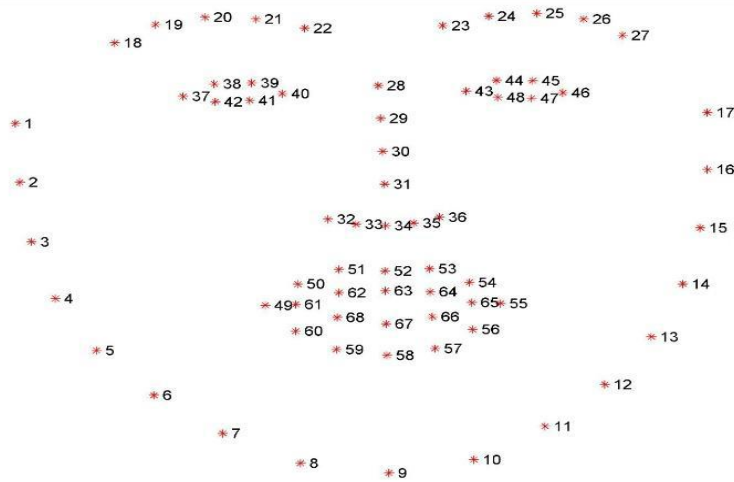


Fig: 1 68 points of FLP Algorithm

DIAGRAM:

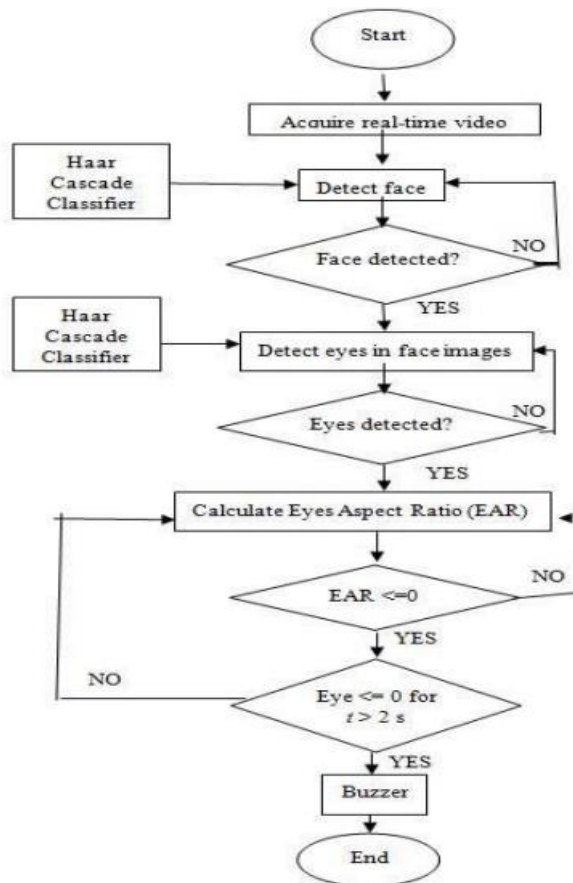


Fig: 2 Flow Chart of Proposed System

## VI. CONCLUSION

In conclusion, all the objectives set at the beginning of the project have been successfully achieved. The development of image processing tasks based on Haar Cascade Classifier and Eye Aspect Ratio (EAR) algorithms on Raspberry Pi to predict sleepiness has been successfully developed and executed throughout this project. This project was conducted to propose a hardware platform prototype using the Raspberry Pi 3 Model B and the Raspberry camera sensor to operate image processing to detect driver drowsiness. These two main algorithms have been coded using Open CV and Python. In order to evaluate the performance of the Haar Cascade Classifier algorithm, five subjects were selected to perform a set of specific experiments. It pointed out that the Haar Cascade classifier was unable to find the face and eyes while the subjects shifted or wore glasses and shades. As for eye blink detection; the resultant EAR value was approximately 0.269 when the eyes opened, whereas when the eyes closed, the EAR was 0.119. Although it was not possible to obtain zero average EAR value, the sudden drop in average EAR indicates that the driver was in a state of sleepiness. As a mechanism to alert the driver, the warning message of drowsiness appeared on the screen, and the buzzer immediately rang in less than 1 second after the eyes had been closed. The device was able to send SMS and email to another subject after the driver's somnolence was identified.

## REFERENCES

- [1] C. B. S. Maior, M. J. D. C. Moura, J. M. M. Santana, and I. D. Lins, "Real-time classification for autonomous drowsiness detection using eye aspect ratio," *Expert Systems with Applications*, vol. 158, 2020..
- [2] K. Kaida, M. Takahashi, T. Åkerstedt, A. Nakata, Y. Otsuka, T. Haratani, and K. Fukasawa, "Validation of the karolinska sleepiness scale against performance and EEG variables," *Clinical Neurophysiology*, vol. 117, no. 7, 2006.
- [3] K. Arai, and R. Mardiyanto, "Real time blinking detection based on Gabor filter," *International Journal of Recent Trends in Human Computer Interaction (IJHCI)*, vol. 1, no. 3, 2010, pp. 33-45.
- [4] R. O. Mbouna, S. G. Kong, and M. G. Chun, "Visual Analysis of Eye State and Head Pose for Driver Alertness Monitoring" *IEEE Transaction on Intelligent Transportation Systems*, vol. 14, no. 3.
- [5] A. Dasgupta, A. George, S. L. Happy, and A. Routray "A Vision-Based System for Monitoring the Loss of Attention in Automotive Drivers" *IEEE Transaction on Intelligent Transportation Systems*, vol. 14, no. 4, 2013.
- [6] T. Soukupova and J. Cech "Real-Time Eye Blink Detection using Facial Landmarks," *Center for Machine Perception, Department of Cybernetics Faculty of Electrical Engineering, Czech Technical University in Prague. Prague, Czech Republic. [Electronic].*
- [7] A. Rosebrock, "Eye blink detection with OpenCV, Python, and dlib," (2017)
- [8] S. Tereza, and J. Cech, "Eye Blink Detection Using Facial Landmarks." *21st Computer Vision Winter Workshop, Rimske Toplice, Slovenia. 201.*
- [9] Tianyi Hong, Huabiao Qin, & Qianshu Sun. (2007). An Improved Real Time Eye State Identification System in Driver Drowsiness Detection. *2007 IEEE International Conference on Control and Automation.*
- [10] Warwick, B., Symons, N., Chen, X., & Xiong, K. (2015). Detecting Driver Drowsiness Using Wireless Wearables. *2015 IEEE 12th International Conference on Mobile Ad Hoc and Sensor Systems.*



INTERNATIONAL  
STANDARD  
SERIAL  
NUMBER  
INDIA



# INTERNATIONAL JOURNAL OF INNOVATIVE RESEARCH

IN SCIENCE | ENGINEERING | TECHNOLOGY

 9940 572 462  6381 907 438  [ijirset@gmail.com](mailto:ijirset@gmail.com)



[www.ijirset.com](http://www.ijirset.com)

Scan to save the contact details