



e-ISSN: 2319-8753 | p-ISSN: 2347-6710

IJRSET

International Journal of Innovative Research in
SCIENCE | ENGINEERING | TECHNOLOGY



INTERNATIONAL JOURNAL OF INNOVATIVE RESEARCH

IN SCIENCE | ENGINEERING | TECHNOLOGY

Volume 13, Issue 4, April 2024

ISSN INTERNATIONAL
STANDARD
SERIAL
NUMBER
INDIA

Impact Factor: 8.423

 9940 572 462

 6381 907 438

 ijirset@gmail.com

 www.ijirset.com

Smart Home with Google Assistant

Rudra Joshi, Sarthak Joshi, Ajinkya Thakur, Karan Bhalerao, Harshal Adhav Prof. A. D. Gawali,

Student, Dept. of Mechatronics, Sanjivani K.B.P Polytechnic, Kopargaon, Maharashtra, India

Student, Dept. of Mechatronics, Sanjivani K.B.P Polytechnic, Kopargaon, Maharashtra, India

Student, Dept. of Mechatronics, Sanjivani K.B.P Polytechnic, Kopargaon, Maharashtra, India

Student, Dept. of Mechatronics, Sanjivani K.B.P Polytechnic, Kopargaon, Maharashtra, India

Lecturer, Dept. of Mechatronics, Sanjivani K.B.P Polytechnic, Kopargaon, Maharashtra, India

ABSTRACT: A basic house can become a smart home with greater automation and safety when the Internet of Things is implemented. This paper's objective is to develop a voice/textcontrolled home application that enables users to control their appliances from a distance. To turn appliances ON or OFF based on their needs; users can simply send text messages or voice instructions. The users have the ability to schedule the equipment's status even when they are not in the vicinity physically. They will also receive details regarding previous schedules and have the capability to activate the appliances for predetermined periods of time. The application has very low implementation costs since low-cost, high-performance technology is used.

KEYWORDS: IOT, Sinric pro, Google Home, Google Assistant, Relay, Smart control, Node Mcu, Blynk , Alexa , IFTTT

I. INTRODUCTION

Automation is the technology that allows a device or process to be controlled with little to no human interaction. Automating domestic or household tasks is known as home automation. It is now possible to easily access and effectively operates electrical equipment. Customers can live in style with home automation by controlling every aspect of their home with just a few simple clicks. Examples of these commands include opening and closing doors, turning on the fan, and more. Among other technologies, controllers, and GSM-based technology can be used to construct home automation systems. However, there are problems with these technologies' availability of spectrum and range. These posed a serious issue or increased the chance of an electrical mishap, like a fire. Therefore, a reliable method of remotely controlling home appliances is required. This study aims to demonstrate how an IoT based home automation system is implemented that uses Wi-Fi technology to solve the home automation issues and concerns. This programme Voice/Text controlled home appliance is available at a low cost, and anyone may turn their houses into smart homes by scheduling the state of their devices.

II. RELATED WORK

1. Planning and Design: Start by outlining what you want to automate in your home. This could include controlling lights, fans, AC, door locks, or even appliances like coffee makers or thermostats.

2. Hardware Setup:

- NodeMCU: This is a low-cost open-source IoT platform based on the ESP8266 Wi-Fi module.
- Sensors/Actuators: Depending on your project requirements, you may need sensors like temperature, humidity, motion, or actuators like relays to control devices.
- Wiring: Connect sensors/actuators to the NodeMCU following proper wiring diagrams.

3. Programming:

- Flashing NodeMCU: Flash the NodeMCU with appropriate firmware (like Arduino IDE) to enable Wi-Fi connectivity and GPIO control.
- Coding: Write firmware code in Arduino IDE or any other compatible platform. This code will handle Wi-Fi connectivity, GPIO control, and interaction with Google Assistant APIs.

4. Integration with Google Assistant:

- Set up a Google Cloud Platform (GCP) project.
- Enable the Google Assistant API and create OAuth 2.0 credentials.
- Develop a webhook or cloud function to handle commands from Google Assistant.
- Implement OAuth 2.0 authentication to allow Google Assistant to communicate securely with your NodeMCU.

III. METHODOLOGY

Creating a home automation project with NodeMCU and Google Assistant involves integrating the NodeMCU, which is a low-cost open-source IoT platform, with Google Assistant for voice-controlled actions. Here's a basic methodology to get you started:

1. Define Requirements:

- Determine what devices you want to control (lights, fans, appliances, etc.).
- Decide which functionalities you want to implement (on/off control, dimming, scheduling, etc.)

2. Hardware Setup:

- Connect NodeMCU to your Wi-Fi network and ensure it can communicate with the internet.
- Connect the necessary components such as relays, sensors, or other devices you want to control to the NodeMCU pins.

3. Software Development:

- Write code for the NodeMCU using the Arduino IDE or another compatible development environment.
- Use libraries like ESP8266WiFi for Wi-Fi connectivity and MQTT for communication between NodeMCU and Google Assistant.

4. Set Up Google Cloud Platform (GCP):

- Create a new project on Google Cloud Platform.
- Enable the Google Assistant API and generate credentials for your project.
- Set up an OAuth 2.0 client ID for your project.

5. Integrate Google Assistant:

- Use Actions on Google to create a new project.
- Define intents and actions for controlling your devices using Dialogflow.
- Configure fulfillment to communicate with your NodeMCU via webhook.

6. Implement Communication:

- Use protocols like MQTT to establish communication between the NodeMCU and Google Assistant.
- Implement logic on the NodeMCU to interpret commands received from Google Assistant and control the connected devices accordingly.

7. Testing and Iteration:

- Test the integration thoroughly to ensure that commands are correctly interpreted and devices are controlled as expected.
- Iterate on the software and hardware as necessary to improve performance and reliability.

8. Security Considerations:

- Implement proper authentication and authorization mechanisms to ensure that only authorized users can control the devices.
- Encrypt communication between the NodeMCU and Google Assistant to prevent eavesdropping or tampering.

9. Documentation and Maintenance:

- Document the setup, configuration, and usage of the home automation system.
- Regularly update and maintain the system to address any security vulnerabilities or compatibility issues.

IV. EXPERIMENTAL SETUP

This section outlines a potential experimental setup to evaluate the effectiveness of the proposed Smart parking system.

Components:

1. NodeMCU (ESP8266 development board)
2. Relay modules (for controlling appliances)
3. Jumper wires



4. Breadboard (optional)
5. Power supply (USB cable for NodeMCU)
6. Smartphone with Google Assistant configured

Evaluation metrics:

1. Functionality:
 - a) Does the system effectively control the home appliances/devices as intended?
 - b) Are all desired functions implemented and working properly?
2. Reliability:
 - a) How often does the system encounter errors or failures?
 - b) Is the system stable over extended periods of use?
3. Response Time:
 - a) How quickly does the system respond to commands from Google Assistant?
 - b) Is there any noticeable delay between command input and action execution?
4. User Experience:
 - a) How intuitive is the user interface for controlling devices?
 - b) Are users able to easily set up and interact with the system?
 - c) Are there any usability issues or pain points reported by users?
5. Compatibility:
 - a) Is the system compatible with a wide range of home appliances/devices?
 - b) Does it work seamlessly with different versions of Google Assistant?
6. Security:
 - a) How secure is the system against unauthorized access or control?
 - b) Are there any vulnerabilities that need to be addressed?
7. Scalability:
 - a) Can the system accommodate additional devices/appliances without significant changes?
 - b) How well does it handle a large number of connected devices?
8. Energy Efficiency:
 - c) How much power does the system consume during operation?
 - d) Are there any features implemented to optimize energy usage?
9. Maintenance and Support:
 - a) How easy is it to troubleshoot and resolve issues with the system?
 - b) Is there adequate documentation and support available for users?
10. Cost-effectiveness:
 - e) How does the cost of implementing the system compare to the benefits it provides?
 - f) Are there any ongoing expenses associated with maintenance or operation?

Benefits of Experimental Setup:

1. Customization: By creating your own experimental setup, you have the flexibility to tailor the automation to your specific needs and preferences. This means you can design functionalities that are not available in off-the-shelf solutions.
2. Learning Opportunity: Building the setup from scratch provides a valuable learning experience. You gain insights into how different components interact, deepen your understanding of programming concepts, and enhance your troubleshooting skills.
3. Cost-Effectiveness: DIY projects often cost less than pre-built solutions. By using affordable components like NodeMCU and leveraging open-source software like Google Assistant SDK, you can achieve automation at a fraction of the cost of commercial alternatives.

Limitations of Experimental Setup:

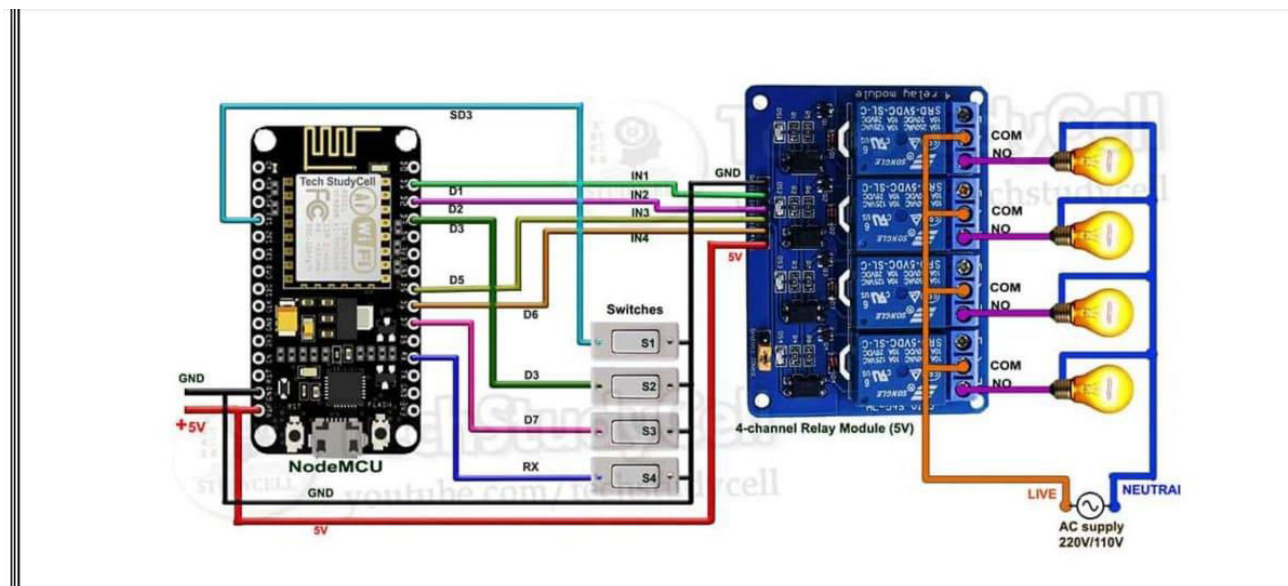
1. Hardware Limitations: NodeMCU boards have limited processing power and memory compared to more powerful microcontrollers or computers. This can restrict the complexity of tasks they can handle simultaneously or the number of devices they can control.
2. Network Reliability: Home automation heavily relies on network connectivity. If the Wi-Fi network is unreliable or experiences frequent outages, it can disrupt communication between the NodeMCU board and Google Assistant, leading to inconsistent performance

Future Considerations:

Considering the rapidly evolving landscape of technology and healthcare, future considerations for health monitoring systems are crucial to ensure their continued relevance and effectiveness. Here are some key future considerations:

- a) **Integration of Advanced Sensors:** As sensor technology continues to advance, future health monitoring systems may integrate more advanced sensors capable of measuring additional physiological parameters with higher accuracy and precision. This could include sensors for monitoring biomarkers, hydration levels, or even early signs of specific diseases.
- b) **Artificial Intelligence and Machine Learning:** Incorporating AI and machine learning algorithms into health monitoring systems can enable more sophisticated data analysis, predictive modeling, and personalized healthcare recommendations. These algorithms can help identify patterns, trends, and anomalies in health data, leading to better insights and interventions.
- c) **Predictive Analytics for Preventive Care:** Future health monitoring systems may focus more on predictive analytics to identify potential health risks and intervene proactively before conditions escalate. By leveraging data from continuous monitoring, these systems can predict and prevent adverse health events, thereby promoting preventive care strategies.

Figures shows the demo model for this project. Figs. (a) shows the original image.



V. CONCLUSION

The Arduino and ESP8266-based Health Monitoring System has been successfully developed to offer real-time monitoring of vital signs like temperature, heart rate, and oxygen levels. This compact and wireless system is adaptable to various environments, from homes to hospitals. Through rigorous testing, we have ensured its accuracy and reliability in detecting abnormalities, thereby facilitating timely interventions and improving patient outcomes. The modular design allows for scalability and customization to meet diverse healthcare needs. With its potential



applications in healthcare, wellness, and research, this system stands as a promising tool for proactive health management and medical advancements. Moving forward, further enhancement and integrations with emerging technologies will continue to enhance its impact and accessibility in healthcare delivery.

REFERENCES

1. "Home Automation System Using ESP8266" by Arbaz Hussain, published on Circuit Digest, available at: [\[https://circuitdigest.com/microcontroller-projects/home-automation-system-using-esp8266\]](https://circuitdigest.com/microcontroller-projects/home-automation-system-using-esp8266)(<https://circuitdigest.com/microcontroller-projects/home-automation-system-using-esp8266>)
2. "DIY Smart Home Automation Using Android and ESP8266" by Rui Santos, published on Random Nerd Tutorials, available at: [\[https://randomnerdtutorials.com/home-automation-using-esp8266/\]](https://randomnerdtutorials.com/home-automation-using-esp8266/)(<https://randomnerdtutorials.com/home-automation-using-esp8266/>)
3. "Build Your Own ESP8266 Home Automation System" by Rui Santos, published on Random Nerd Tutorials, available at: [\[https://randomnerdtutorials.com/build-your-own-esp8266-home-automation-system/\]](https://randomnerdtutorials.com/build-your-own-esp8266-home-automation-system/)(<https://randomnerdtutorials.com/build-your-own-esp8266-home-automation-system/>)
4. "Home Automation Using ESP8266 and Blynk App" by Patel Darshil, published on Electronics Hub, available at: [\[https://www.electronicshub.org/home-automation-esp8266-blynk-app/\]](https://www.electronicshub.org/home-automation-esp8266-blynk-app/)(<https://www.electronicshub.org/home-automation-esp8266-blynk-app/>)
5. "ESP8266 Home Automation Projects" by techiesms, published on GitHub, available at: [\[https://github.com/techiesms/ESP8266-Home-Automation\]](https://github.com/techiesms/ESP8266-Home-Automation)(<https://github.com/techiesms/ESP8266-Home-Automation>)

These references cover a range of home automation projects using ESP8266, providing tutorials, guides, and code examples to help you get started with your own project.



INTERNATIONAL
STANDARD
SERIAL
NUMBER
INDIA



INTERNATIONAL JOURNAL OF INNOVATIVE RESEARCH

IN SCIENCE | ENGINEERING | TECHNOLOGY

 9940 572 462  6381 907 438  ijirset@gmail.com



www.ijirset.com

Scan to save the contact details