



e-ISSN: 2319-8753 | p-ISSN: 2347-6710

# IJRSET

International Journal of Innovative Research in  
**SCIENCE | ENGINEERING | TECHNOLOGY**



# INTERNATIONAL JOURNAL OF INNOVATIVE RESEARCH

IN SCIENCE | ENGINEERING | TECHNOLOGY

Volume 13, Issue 4, April 2024

**ISSN** INTERNATIONAL  
STANDARD  
SERIAL  
NUMBER  
INDIA

Impact Factor: 8.423

 9940 572 462

 6381 907 438

 [ijirset@gmail.com](mailto:ijirset@gmail.com)

 [www.ijirset.com](http://www.ijirset.com)

# Empowering Health with Virtual Doctor Chatbot Integration

Manoj R B<sup>1</sup>, Nikil B S<sup>1</sup>, Shravan S Aligar<sup>1</sup>, Syed Farhan<sup>1</sup>, Dr. Arun Kumar G Hiremath<sup>2</sup>,  
Prof. Priya V<sup>3</sup>

U G Students, Dept. of CSE, Bapuji Institute of Engineering and Technology, Davangere, India<sup>1</sup>

Associate Professor, Dept. of CSE, Bapuji Institute of Engineering and Technology, Davangere, India<sup>2</sup>

Assistant Professor, Dept. of CSE, Bapuji Institute of Engineering and Technology, Davangere, India<sup>3</sup>

**ABSTRACT:** This paper presents a healthcare chatbot system that integrates with IoT devices like heart rate sensor, SpO<sub>2</sub> sensor and temperature sensor. The chatbot interface provides a user-friendly environment serving as a central hub. Patients can track symptoms and receive medication reminders through the chatbot. It securely collects data from integrated IoT devices, offering a comprehensive view of the patient's condition displayed on the chatbot interface. The system enables direct appointment booking with doctors. Doctors have access to the interface to visualize appointments and provide diagnoses. The future scope for this system is vast, aiming to reduce the burden on healthcare officials.

**KEYWORDS:** Healthcare, Chatbot, IoT devices, Appointment, Symptoms, Sensors.

## I. INTRODUCTION

Millions of individuals worldwide suffer from chronic illnesses, which include diseases like common cold, cough, heart disease and respiratory disorders. Both patients and healthcare professionals must continue to work toward effectively managing these illnesses. Finding reliable and easily understandable information on their particular illness can be a challenge for patients. Their capacity to actively engage in the decision-making process regarding their healthcare may be hampered by this lack of knowledge. Effective management of chronic diseases depends on patients and healthcare providers having regular, clear communication. On the other hand, the frequency and accessibility of conventional communication channels, such as phone calls or in-person meetings, may be restricted. Delays in addressing issues or making necessary adjustments to treatment programs may result from this. Research says 60% of visits to doctors are for simple small-scale diseases, 80% of which can be cured at home using simple home remedies. Typical cold and cough, headache, stomach problems, and so on are among these diseases. These are treatable without the help of a physician and they are being brought on by weather variations, eating an unhealthy diet, exhaustion, etc.

A chatbot is a software that enables users to start a conversation with the system. A chatbot is an example of a Natural Language Processing (NLP) question-answering system. In the medical industry, chatbots are becoming more and more popular since they offer medical organizations an efficient method of managing their patients. Major advancements are being made in medical appointment scheduling, which serves as the foundation for the majority of non-urgent health care services, in order to encourage patient participation. Patients have better access and more flexibility when choosing their preferences for appointments when they use the Internet as a medium. "Wearable smart sensors" are a new kind of technology that monitors vital signs continuously while causing the least amount of discomfort and disruption to regular activities. Examining the application of wearable smart sensors for disease management and vital sign monitoring during epidemic outbreaks is the main objective.

The majority of sensors were used to track blood pressure, heart rate, and body temperature. Wearable sensor gadgets like the heart rate sensor, spo2 sensor, Temperature sensor and body area network sensors were popular types which may employed monitoring vital indicators for epidemic trends.

The Internet of Things, or IoT, makes it easier for smart devices—such as smart phones and sensors—to connect to the internet and allows for machine-to-machine and human-to-machine communication. This technology is especially useful in the healthcare industry since it makes it possible to monitor and communicate with patients in real time, both in hospital settings and from a distance at their homes. Patients' health data is gathered by wearable or embedded

medical sensors, which use machine learning techniques to analyse the data and give healthcare professionals useful insights [2].

The way the healthcare system communicates with patients is changing, with an emphasis on safe data analysis and storage, patient interaction, diagnosis retrieval using NLP, and automated appointment scheduling through conversational AI. To close these gaps and provide patients with human-language information and a means of communicating health concerns, the health Bot was created. It records symptoms, forecasts health issues, ascertains patient goals, and intelligently directs discussions using natural language processing (NLP) and classification algorithms [3].

The USA, Malaysia, and India conducted 65% of the total papers. The deployment of sensors for continuous vital sign monitoring and the control and management of epidemic diseases might both be enhanced by the implementation of suitable technological solutions. To find out the true effects and effectiveness of these sensors, more research is necessary [7].

### 1.1 Temperature Sensor

In medical settings, temperature sensors are essential for tracking patients' body temperatures, which serve as a vital sign of their health. They are employed in a number of applications such as cardiac care, where they measure both skin and core temperatures to identify potential problems during surgery or therapy, such as fever or hypothermia.

### 1.2 SpO<sub>2</sub> Sensor

Blood oxygen saturation levels are measured using non-invasive devices called pulse oximeters, or SpO<sub>2</sub> sensors. They are frequently attached to a patient's fingertip or toe and are essential for monitoring respiratory function in critical care. They compute blood oxygen levels using light wavelengths.

### 1.3 Heart rate Sensor

By measuring the heart's blood flowing rate, heart rate monitors can provide insights into cardiovascular health. These sensors are crucial for fitness evaluations as well as medical applications, such tracking cardiac event recovery. They are present in many medical devices, including wearable technology.

## II. RELATED WORK

An AI healthcare chatbot is recommended as a remedy to the issue of frequent medical visits, according to the study in [7]. The chatbot makes use of Natural Language Processing (NLP) to interpret user symptoms and provide potential medical diagnosis. Subsequently, it provides a general overview of the disease and suggests treatments according to severity. In cases of extreme severity, medical advice is suggested. Apart from pharmaceuticals, the chatbot can offer conventional medical options such as homeopathy and Ayurveda. It stores user data in a database so that over time, it can respond with greater accuracy.

Within [4] Given India's fast expanding population, a medical chatbot based on artificial intelligence is proposed as an alternative to the country's acute physician shortage. Insufficient medical staff often results in long wait times for patients, who may even die from inadequate treatment. By providing users with immediate access to medical information, this chatbot aims to fill this gap. Users may search local specialists, ask questions about symptoms, and schedule appointments right away with the chatbot. Better yet, the chatbot can identify doctors based on precautions for minor ailments or urgency by using user response analysis. In addition, it can help users find nearby diagnostic labs—such as MRI scan centres—and provide information about the lab's features and operating hours. Through the integration of natural language processing (NLP) and machine learning, this technology aims to improve patient convenience of access to healthcare services and maybe save lives.

In [5] the research examines how the Internet of Things (IoT) could revolutionize the medical field. Information technology has historically boosted a number of industries, and IoT is currently becoming a game-changing force in healthcare. IoT enables better access to healthcare services and proactive monitoring by establishing a connection between physicians and patients via smart devices. While there will always be health challenges, this technology can greatly enhance patient care by facilitating real-time data collecting, remote monitoring, and improved analysis for well-informed decision-making. In the end, IoT has the power to transform conventional healthcare practices and offer better, more effective services.

In [6] research paper the goal is to transform the way that medical advice is accessed by exploring the development of a chatbot for healthcare. The chatbot understands requests from clients and analyses health concerns using Artificial Intelligence, more precisely Natural Language Processing (NLP). Users can interact via text or speech to get self-care advice, basic medical information, and possible disease diagnosis based on symptom analysis. The chatbot can even help schedule doctor appointments for more serious ailments. This easy-to-use tool is available around-the-clock, which might lower healthcare expenses and give people more confidence in their capacity to take care of themselves.

### III. EXISTING SYSTEM

**Babylon Health (UK):** This chatbot evaluates the symptoms of the user and provides important medical data in addition to possible explanations.

**Zocdoc (US):** With the help of this chatbot, patients can look up doctors, make appointments, and get confirmation messages.

**Mayo Clinic Chatbot (US):** The users can ask basic health concerns to the Mayo Clinic chatbot, which provides evidence-based answers derived from the organization's massive medical knowledge base.

Chatbots for healthcare are growing in popularity and offer a range of functionalities. These chatbots are not only capable of scheduling appointments, reminding users to take their meds, analysing symptoms, and providing mental health services. By giving people information and making healthcare activities easier, they empower patients, but they cannot take the place of communicating with an authorized medical expert.

### IV. METHODOLOGY

#### 1. Requirements Gathering:

Understanding user needs is critical to the success of our integrated IoT devices with general health monitoring system. In this first stage, surveys and interviews are used to gather user research. We'll target people who are interested in tracking their health data with wearables and sensors. Through selecting features according to user feedback and requested functionality, we can guarantee that the system provides the most valuable functionalities for health and well-being monitoring. Our choices regarding the temperature, heart rate, blood oxygen level, and other data points obtained from the selected IoT devices, as well as the creation of an approachable and user-friendly interface for data presentation and user engagement, will also be influenced by this research.

#### 2. System design:

Developing a detailed plan for the general health monitoring application is the main goal of the system design phase. In order to ensure that the system can manage an expanding user base and rising data volumes, scalability will be essential. The protection of user health data will be the top priority for security measures We will develop a data flow chart that illustrates the information flow between the IoT devices like temperature sensors, heart rate, and SpO2 for data storage, and the user interface. Users will find it easy to interact with the system and view their health data since user-friendliness and accessibility will be given top priority in the design of the user interface (UI). An easily comprehensible depiction of the collected data points will also be part of the design.

#### 3. System Development:

The development of health monitoring system focuses on transforming an idea into an operational program. For the selected wearables (temperature, heart rate, and SpO2), we will program data collection modules and create tools for data storage and analysis. To guarantee a seamless data transfer from the devices, APIs will be incorporated. Because usability is important, creating a simple user interface that makes it easy to interact with the system and view health data. Before deployment, comprehensive testing that includes performance evaluations and user input will be carried out. Ultimately, a strategy for safe implementation and continuous maintenance will guarantee the system's durability and flexibility to accommodate changing demands.

#### 4.1 SYSTEM ARCHITECTURE

##### Data Layer:

**Wearable sensors:** Wearable sensors are probably incorporated into the system design to gather user health data. Fitness trackers, smartwatches, and other gadgets that may track vital signs or other health indicators may be examples of these sensors.

##### Data Transmission Layer:

**Localhost:** This implies that the system may be tested or developed locally on a computer. Data transfer in a deployed system would probably take place via the internet.

##### Data Processing and Analytics Layer:

**Healthcare Chatbot:** As the central processing unit, the healthcare chatbot may obtain data directly from the wearable sensors with this health data, the chatbot could probably:

1. Analyse symptoms based on user descriptions.
2. Utilize and access an integrated medical knowledge base.
3. Give users information on possible causes, available treatments, and precautions.

##### User Interface Layer:

**Dashboard Service Server:** This part most likely embodies the system's server-side functionality, possibly managing operations such as user authorization and authentication. Administration of chatbot interactions and user data. Presentation of learning materials or medical data via a user interface.

**Database:** User data, content from medical knowledge bases is all stored in the database.

**Security Considerations:** For testing purposes, security may not be the top priority in the local development environment, but a deployed system would probably have security safeguards in place to safeguard user privacy and the confidentiality of health data. This may include secure authentication procedures, access controls, and encryption of data both in transit and at rest.

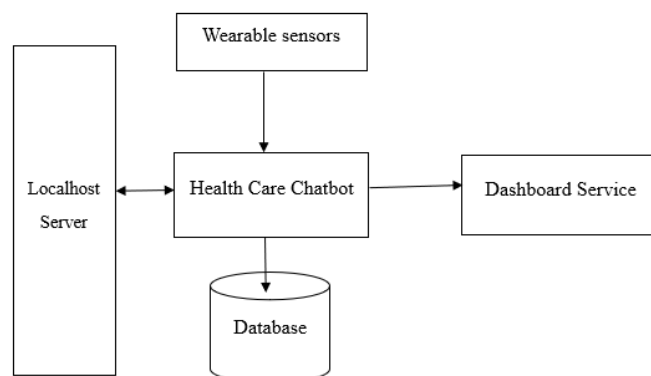


Fig 4.1 System Architecture

Chatbot for handling healthcare claims makes use of layered architecture. Wearables gather and securely send health data. The primary healthcare chatbot evaluates this information along with a built-in medical knowledge base to respond to user inquiries regarding possible reasons, remedies, and avoidance. User data is managed by a different dashboard server, which also displays information via a UI. Lastly, user data, health information, and content from medical knowledgebases are all stored in a secure database. Encryption and authentication are two of the most important security features in the system.

## 4.2 FLOWCHART

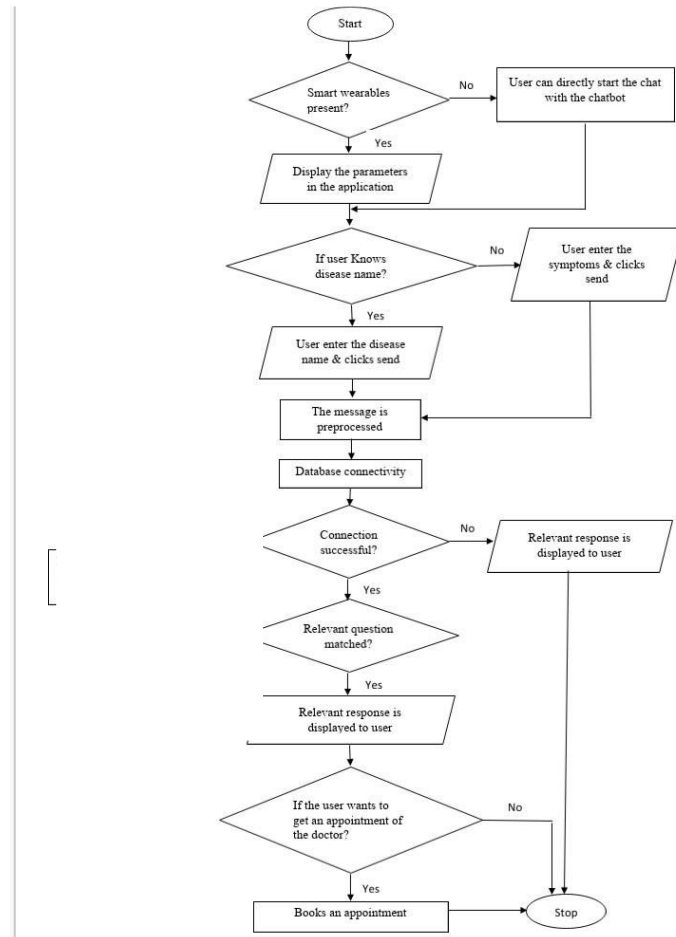


Fig 4.2 Flow Chart

## V. FUTURE SCOPE

There is a numerous of opportunities for improving the management of chronic diseases in the project's future. There can be a plan to expand device integration to continuous glucose monitoring, smart inhalers, and sleep trackers. Users can be enabled with customized assistance and early intervention possibilities through advanced AI capabilities like risk prediction and personalized recommendations. While machine learning applied to big user datasets could reveal broader population health problems and open the path for preventative actions, telehealth integration through the chatbot would enable remote consultations. Users could be further motivated and an encouraging online community might be created by gamification and social elements. Lastly, there is hope for improved accessibility with a voice-activated chatbot interface, particularly for those with physical constraints. This initiative has the potential to completely change the management of chronic diseases by consistently creating and incorporating these innovations, providing an enhanced and user-centric approach to patient care.

## VI. CONCLUSION

The paper offers an innovative approach to empower people to manage their own health through the development of an Internet of Things (IoT) devices linked with a user-centric healthcare chatbot system. This innovative approach resolves access concerns, gives users the resources they require for self-care, and offers information and help 24/7. The smooth integration with IoT devices removes the need for manual data collection, providing a more complete view of the health of the user. The chatbot's features enable personalized reports and instructional resources that promote a



proactive and educated approach to managing overall well-being. This research shows how technology can greatly improve access to healthcare and give people the confidence to actively participate in their health journey. This tactic, which encourages a more team-oriented approach, may enhance health outcomes and build a more efficient healthcare system.

#### REFERENCES

- [1] Jegadeesan Ramalingam, Dava Srinivas, Umapathi Nagappan, Karthick Ganesan, “Personal Healthcare Chatbot for Medical Suggestions Using Artificial Intelligence and Machine Learning”, Telangana India, July 2023.
- [2] Khaled H. Almotairi, “Application of Internet of Things in HealthCare Domain”, Journal of Umm AI-Qura University for Engineering and Architecture, December 2022.
- [3] Maria V. Vasileiou, Ilias G. Maglogiannis, “The Health ChatBots in Telemedicine: Intelligent Dialog System for Remote Support”, Journal of Healthcare Engineering, Piraeus, Greece, October 2022.
- [4] P Anandan, S Kokila, S Elango, P Gopinath, P Sudarsan, “Artificial Intelligence based Chat Bot for Patient Health Care”, International Conference on Computer Communication and Informatics (ICCCI), Coimbatore, India, January 2022.
- [5] Suhail Javed Quraishi; Humra Yusuf, “Internet of Things in Healthcare, A Literature Review”, International Conference on Technological Advancements and Innovations (ICTAI), Tashkent, Uzbekistan, November 2021.
- [6] Athulya N, Jeeshna K, S J Aadithyan, U Sreelakshmi, Hairunizha, HEALTHCARE CHATBOT, International Journal of Creative Research Thoughts (IJCRT), Thalassery, India, October 2021.
- [7] Niloofar MohammadZadeh, Marsa Gholamzadeh, Soheila Saeedi, Sorayya Rezayi, “The application of wearable smart sensors for monitoring the vital signs of patents in epidemics: a systematic literature review”, Journal of Ambient Intelligence and Humanized computing, November 2020.



INTERNATIONAL  
STANDARD  
SERIAL  
NUMBER  
INDIA



# INTERNATIONAL JOURNAL OF INNOVATIVE RESEARCH

IN SCIENCE | ENGINEERING | TECHNOLOGY

 9940 572 462  6381 907 438  [ijirset@gmail.com](mailto:ijirset@gmail.com)



[www.ijirset.com](http://www.ijirset.com)

Scan to save the contact details