



e-ISSN: 2319-8753 | p-ISSN: 2347-6710

IJRSET

International Journal of Innovative Research in
SCIENCE | ENGINEERING | TECHNOLOGY



INTERNATIONAL JOURNAL OF INNOVATIVE RESEARCH

IN SCIENCE | ENGINEERING | TECHNOLOGY

Volume 13, Issue 4, April 2024

ISSN INTERNATIONAL
STANDARD
SERIAL
NUMBER
INDIA

Impact Factor: 8.423

9940 572 462

6381 907 438

ijirset@gmail.com

www.ijirset.com

Smart Waste Management System Using IOT

Krashna Rathi, Kalyani Pingale, Shreya Pawar, Saurabh Pilare

Assistant professor, Dept. of ENTTC, P.G.Moze College of Engineering, Pune, India

UG Student, Dept. of ENTTC, P.G.Moze College of Engineering, Pune, India

UG Student, Dept. of ENTTC, P.G.Moze College of Engineering, Pune, India

UG Student, Dept. of ENTTC, P.G.Moze College of Engineering, Pune, India

ABSTRACT: The Smart Waste Management System (SWMS) represents a significant advancement in modern waste management practices, leveraging innovative technologies to address the challenges associated with urban waste disposal. This research paper explores the development and implementation of SWMS, which integrates Internet of Things (IoT) devices, sensors, microcontrollers, and communication modules to optimize waste collection, segregation, and disposal processes. The SWMS automates waste segregation, monitors fill levels in real-time, and triggers alerts for timely collection and disposal, thereby enhancing operational efficiency and reducing environmental impact. This paper provides insights into the design, functionality, and benefits of SWMS, highlighting its potential to revolutionize waste management practices and create cleaner, healthier urban environments.

KEYWORDS: Smart Waste Management, Internet of Things (IoT), Sensors, Microcontrollers, Communication Modules, Waste Segregation, Fill Level Monitoring, Environmental Sustainability.

I. INTRODUCTION

In modern urban environments, waste management has emerged as a critical challenge due to the increasing volume of waste generated and the strain it puts on existing infrastructure. Traditional waste management methods often struggle to keep pace with the growing demands of rapidly expanding cities, leading to inefficiencies, environmental degradation, and public health concerns. To address these challenges, innovative solutions leveraging advanced technologies have been developed, offering new avenues for optimizing waste collection, segregation, and disposal processes.

One such solution is the implementation of Smart Waste Management Systems (SWMS), which harness the power of Internet of Things (IoT), sensor technology, and data analytics to revolutionize how waste is managed in urban areas. SWMS represents a paradigm shift from conventional waste management practices by introducing automation, real-time monitoring, and intelligent decision-making capabilities into the process. By integrating sensors into waste bins, these systems can monitor fill levels, detect waste types, and trigger alerts for timely collection and disposal, thereby enhancing operational efficiency and reducing environmental impact.

The introduction of SWMS signifies a transformative approach to waste management, offering the potential to create cleaner, healthier, and more sustainable urban environments. By leveraging IoT connectivity and data-driven insights, these systems enable waste management authorities to optimize resource allocation, improve service delivery, and enhance the overall quality of life for residents. In this paper, we explore the principles, technologies, and applications of SWMS, highlighting their role in shaping the future of urban waste management and promoting environmental sustainability.

II. LITERATURE SURVEY

In recent years, there has been a growing body of research focusing on the development of smart waste management systems, aiming to address the challenges associated with traditional waste disposal methods. Several studies have investigated various aspects of smart waste management, including technology integration, sensor applications, and system efficiency.

In Paper [1] Kumar et al. (2016) presented an IoT-based smart garbage alert system using Arduino UNO, highlighting the role of microcontrollers and sensor integration in waste management. Their work emphasized the importance of real-time monitoring and alerting to optimize waste collection processes.

In Paper [2], Saminathan et al. (2019) proposed an IoT-based automated waste segregator for efficient recycling, emphasizing the significance of automated segregation mechanisms in promoting sustainable waste management practices. Their research underscored the potential of IoT technologies in enhancing waste segregation and recycling efficiency.

In Paper[3], Jude et al. (2019) explored the concept of automatic waste segregation and monitoring systems, focusing on the role of sensors and communication technologies in improving waste collection and segregation processes. Their study demonstrated the effectiveness of sensor-based systems in optimizing waste management operations.

In Paper [4], Vasagade et al. (2017), Murugaanandam et al. (2018), and Suryawanshi et al. (2018), have also contributed to the field of smart waste management by investigating topics such as dynamic waste collection systems, efficient IoT-based smart bins, and sensor-based waste management solutions.

In Paper [5], Al Mamun et al. (2014), Nirde et al. (2017), and Baby et al. (2017) have focused on integrated sensing systems, IoT applications, and machine learning approaches for solid waste management. These studies have highlighted the potential of advanced technologies in optimizing waste collection, monitoring, and prediction.

III. SYSTEM ARCHITECTURE

The Smart Waste Management System (SWMS) architecture consists of interconnected elements working together to automate tasks and optimize resource utilization.

1. User Interface (Mobile/Web App): A user-friendly interface, accessible via mobile or web applications, serves as the primary interaction point for users. Through the interface, users can remotely monitor the status of waste bins, receive real-time alerts, and configure system settings according to their preferences. Additionally, the interface provides data visualization and analytics tools, empowering users to make informed decisions regarding waste management practices.
2. Cloud Infrastructure: The backbone of the SWMS, the cloud infrastructure hosts backend services responsible for data storage, processing, and analytics. By leveraging cloud resources, the system can efficiently manage large volumes of sensor data collected from waste bins. This data is stored securely in the cloud, enabling historical analysis, trend identification, and predictive modeling to optimize waste management strategies.
3. Centralized Control System: Facilitating communication and coordination among system components, the centralized control system acts as the brain of the SWMS. It receives sensor data from waste bins, processes it in real time, and triggers appropriate actions based on predefined rules and algorithms. Tasks such as route optimization, alert generation, and resource allocation are managed centrally to ensure efficient and effective waste management operations.
4. Smart Waste Bins: Equipped with an array of sensors and actuators, smart waste bins play a crucial role in the SWMS architecture. Sensors, including infrared (IR) sensors for waste level detection and moisture sensors for differentiating wet and dry waste, collect data on waste composition and fill levels. Actuators control mechanisms such as compartment doors, enabling automated waste segregation based on sensor inputs. Microcontrollers embedded within the bins process sensor data and execute control logic to optimize waste-handling processes.
5. Waste Management Hub: Acting as a local control center for waste bins, the Waste Management Hub facilitates communication between bins and the centralized control system. Each hub contains microcontrollers and communication modules responsible for data transmission and local processing. Sensor data collected by waste bins is relayed to the hub, where it is processed and forwarded to the centralized system for further analysis and action.

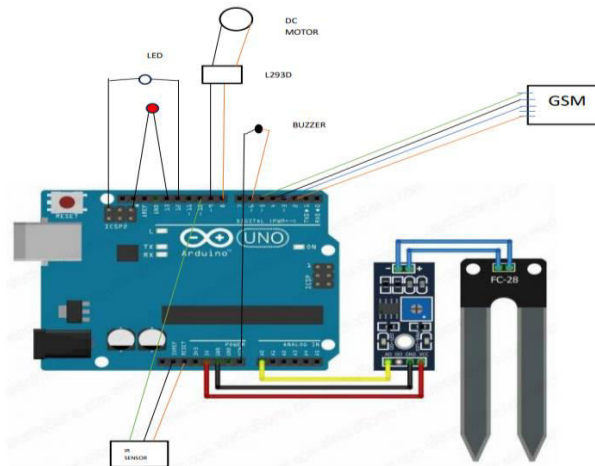


Fig. Circuit Diagram

Interactions: Sensor data from waste bins is transmitted to the Waste Management Hub, where it undergoes initial processing. Processed data is then relayed to the Centralized Control System, which analyzes it to trigger appropriate actions such as alert generation or route optimization. Users interact with the system through the User Interface, accessing real-time data and managing system settings. Data collected from waste bins is stored and analyzed in the Cloud Infrastructure, enabling long-term monitoring and analysis for continuous improvement of waste management practices.

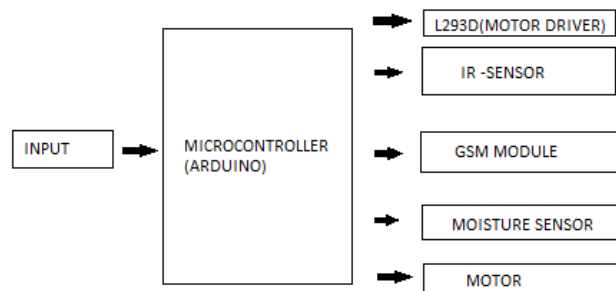


Fig. Block Diagram

IV. HARDWARE REQUIREMENT

1. Microcontroller (Arduino Uno): Microcontroller acts as the central processing unit, controlling various components. It executes system logic, processes sensor data, and communicates with peripherals.



Fig: Arduino UNO

2. Infrared (IR) Sensors: Infrared Sensors detect waste presence and fill levels in garbage bins. It emits and receives infrared light to monitor waste accumulation.

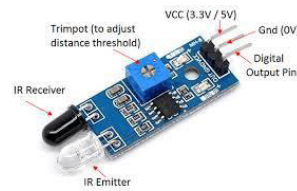


Fig: IR Sensor

3. Moisture Sensors: Moisture sensor measure moisture content to differentiate wet and dry garbage. It facilitates accurate waste segregation and composting optimization.

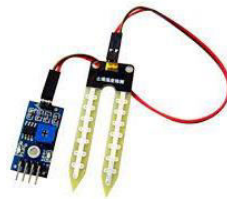


Fig: Moisture Sensor

4. DC Motors: DC motors actuate mechanisms such as compartment doors for waste segregation. It controls door movement based on sensor inputs.



Fig: DC Motor

5. GSM Modules: The GSM Module enables wireless communication for alerting and data exchange. It sends SMS alerts to waste management authorities regarding bin status.



Fig: GSM Module

6. Motor Drivers (L293D): The Motor Driver controls the speed and direction of DC motors. It acts as an interface between microcontrollers and motors for precise control.



Fig: Motor Driver

7. LCD Displays: LCD Displays provide visual feedback to users regarding bin status and system messages. It enhances user interaction and facilitates system monitoring.

V. SOFTWARE REQUIREMENT

A. Arduino IDE: The Arduino IDE is an open-source software development environment, which means it is freely available for use, modification, and distribution. Cross-Platform Compatibility: The Arduino IDE is compatible with various operating systems, including Windows, macOS, and Linux, allowing users to develop Arduino projects on their preferred platform. Compilation and Upload: The Arduino IDE provides a built-in compiler that translates the Arduino code (written in C/C++) into machine-readable instructions. It also allows for easy uploading of the compiled code to the Arduino board. Library Manager: The IDE includes a Library Manager, which provides a vast collection of pre-built libraries that extend the functionality of Arduino. Users can easily search, install, and manage libraries from within the IDE. Board Manager: The IDE includes a Board Manager, which allows users to select the specific Arduino board they are using, install the necessary drivers, and manage board-specific configurations. It enables developers to write and debug code for the SWMS using a simplified version of C/C++.

Common libraries include:

- ArduinoJson: For parsing and generating JSON data.
- LiquidCrystal: For controlling LCDs.
- Wire: For I2C communication with sensors and peripherals.
- Adafruit_Sensor and Adafruit_TSL2561: For interfacing with light sensors.
- Adafruit_Sensor and Adafruit_BME280: For interfacing with temperature, humidity, and pressure sensors.



Fig : Arduino IDE

B. ARDUINO SKETCHES (CODE)

Arduino sketches (code) implements the core functionalities of the SGMS, including:

- Garbage segregation logic: Code to control servo motors or actuators for opening/closing compartments based on sensor inputs.
- Fill level monitoring: Code to read sensor data (e.g., ultrasonic distance sensors, load cells) and trigger alerts when fill levels exceed thresholds.
- Communication protocols: Code to enable communication with centralized control units, sensors, and external devices (e.g., GSM modules for SMS alerts).
- User interface: Code to display information on LCD screens, LEDs, or other output devices for user interaction and feedback

VI. ALGORITHMS

The Smart Waste Management System (SWMS) employs algorithms to automate various tasks such as waste segregation, route optimization, and alert generation. These algorithms leverage real-time sensor data and historical information to make intelligent decisions, improving the efficiency and effectiveness of waste management operations.

Below is an overview of key algorithms used in the SWMS:

1. Waste Segregation Algorithm:

It senses data from waste bins (e.g., waste level, moisture content). Based on the sensor inputs, the algorithm determines the type of waste deposited in the bin (wet or dry). It then activates the appropriate actuators to segregate the waste into designated compartments. The Segregated waste bins are ready for collection and disposal.

2. Fill Level Monitoring Algorithm:

It senses data from waste bins (e.g., waste level). The algorithm continuously monitors the fill levels of waste bins in real time. It analyzes the rate of fill and predicts when a bin is nearing capacity. Alerts are generated when bins reach predefined fill level thresholds, triggering timely waste collection activities.

3. Route Optimization Algorithm: Inputs data on bin fill levels, geographical locations, and historical collection patterns. Using optimization techniques such as shortest path algorithms or genetic algorithms, the system optimizes waste collection routes to minimize travel time and fuel consumption. Optimized collection routes generate waste management personnel, ensuring efficient collection and disposal activities.

4. Alert Generation Algorithm:

It senses data, system status information, and predefined rules. The algorithm analyzes incoming data to detect anomalies, system faults, or critical events (e.g., full bins). It triggers alerts based on predefined thresholds and rules. The Real-time alerts are sent to waste management personnel via SMS, email, or push notifications, enabling prompt response to critical situations.

5. Data Analytics Algorithm:

It uses historical sensor data, operational metrics, and environmental factors. Using machine learning and statistical analysis techniques, the algorithm identifies trends, patterns, and correlations in waste generation and collection data. It provides insights to optimize system parameters and improve overall efficiency. We get actionable insights and recommendations for system optimization, route planning, and resource allocation.

These algorithms work in concert with the SWMS architecture to automate waste management processes, minimize operational costs, and promote environmental sustainability. By harnessing the power of data-driven decision-making, the SWMS optimizes waste collection and disposal activities, contributing to cleaner, healthier communities.

VII.CONCLUSION

In summary, The Smart Garbage Management System (SGMS) represents a significant step forward in revolutionizing traditional waste management practices and addressing the challenges associated with urban waste disposal. Through the integration of advanced technologies such as IoT, sensors, microcontrollers, and communication modules, the SGMS offers a comprehensive solution for optimizing waste collection, segregation, and disposal processes in urban environments. By automatically segregating waste into different compartments based on type, monitoring fill levels in real-time, and triggering alerts for timely collection and disposal, the SGMS enhances operational efficiency, reduces environmental impact, and promotes sustainable waste management practices. Moreover, the SGMS facilitates data-driven decision-making by providing valuable insights into waste generation patterns, usage trends, and operational performance, enabling waste management authorities to allocate resources more effectively and optimize collection routes.

While the SGMS offers numerous advantages, including improved waste segregation, optimized fill-level monitoring, and enhanced resource allocation, it also presents challenges such as initial investment costs, maintenance requirements, and data privacy concerns. Addressing these challenges requires collaboration among stakeholders, robust technical solutions, and a commitment to sustainability and innovation. Overall, the SGMS holds great promise in transforming waste management practices, promoting environmental sustainability, and creating cleaner, healthier, and more livable urban environments for present and future generations.

REFERENCES

- [1] Kumar, N. Sathish, B. Vuayalakshmi, R. Jenifer Prarthana, and A. Shankar. "IOT based smart garbage alert system using Arduino UNO." In 2016 IEEE Region 10 Conference (TENCON), pp. 1028-1034. IEEE, 2016.
- [2] T. Saminathan, Akash Musipatla, P. Manideep Varma, P. Shahid Khan, G. Mahesh Kumar. "IoT Based Automated Waste Segregator for Efficient Recycling" International Journal of Innovative Technology and Exploring Engineering (IJITEE) ISSN: 2278-3075, Volume-8 Issue-6S, April 2019.
- [3] S.A.A.Jude, S.Selva prabhu, J.Veerapandian, M.Muthamilselvan. "Automatic Waste Segregation and Monitoring system of Municipal Solid Waste" International Research Journal of Engineering and Technology (IRJET) e-ISSN: 2395-0056, 2019.
- [4] Kavya M, Sahana P, Shruthi G "Sensor Based Smart Dustbin for Waste Segregation and Status Alert" IJARIE-ISSN (O)-2395-4396, 2017.
- [5] Vasagade, Trushali S., Shabanam S. Tamboli, and Archana D. Shinde. "Dynamic solid waste collection and management system based on sensors, elevator and GSM." In 2017 International Conference on Inventive Communication and Computational Technologies (ICICCT), pp. 263-267. IEEE, 2017.
- [6] Murugaanandam, S., V. Ganapathy, and R. Balaji. "Efficient IOT Based Smart Bin for Clean Environment." In 2018 International Conference on Communication and Signal Processing (ICCSP), pp. 0715-0720. IEEE, 2018.
- [7] Suryawanshi, Sapna, Rohini Bhuse, Megha Gite, and Dhanashri Hande. "Waste management system based on IoT." Waste Management 5, no. 03 (2018): 1835-1837.
- [8] Al Mamun, Md Abdulla, Mahammad A. Hannan, Aini Hussain, and Hassan Basri. "Integrated sensing systems and algorithms for solid waste bin state management automation." IEEE Sensors Journal 15, no. 1 (2014): 561-567.
- [9] Nirde, Krishna, Prashant S. Mulay, and Uttam M. Chaskar. "IoT based solid waste management system for smart city." In 2017 International Conference on Intelligent Computing and Control Systems (ICICCS), pp. 666-669. IEEE, 2017.
- [10] Baby, Cyril Joe, Harvir Singh, Archit Srivastava, Ritwik Dhawan, and P. Mahalakshmi. "Smart bin: An intelligent waste alert and prediction system using machine learning approach." In 2017 International Conference on Wireless Communications, Signal Processing and Networking (WiSPNET), pp. 771-774. IEEE, 2017.
- [11] Yerraboina, Sirisha, Nallapaneni Manoj Kumar, K. S. Parimala, and N. Aruna Jyothi. "Monitoring the smart garbage bin filling status: an IoT application towards waste management." Int J Civ Eng Technol 9, no. 6 (2018): 373-381.
- [12] Begur, Hema, Mithila Dhawade, Navit Gaur, Pulkit Dureja, Jerry Gao, Medhat Mahmoud, Jesse Huang, Sean Chen, and Xiaoming Ding. "An edge-based smart mobile service system for illegal dumping detection and monitoring in san jose." In 2017 IEEE SmartWorld, Ubiquitous Intelligence & Computing, Advanced & Trusted Computed, Scalable Computing & Communications, Cloud & Big Data Computing, Internet of People and Smart City Innovation (SmartWorld/SCALCOM/UIC/ATC/CBDCOM/IOP/SCI), pp. 1-6. IEEE, 2017.



INTERNATIONAL
STANDARD
SERIAL
NUMBER
INDIA



INTERNATIONAL JOURNAL OF INNOVATIVE RESEARCH

IN SCIENCE | ENGINEERING | TECHNOLOGY

 9940 572 462  6381 907 438  ijirset@gmail.com



www.ijirset.com

Scan to save the contact details