



e-ISSN: 2319-8753 | p-ISSN: 2347-6710

IJRSET

International Journal of Innovative Research in
SCIENCE | ENGINEERING | TECHNOLOGY

INTERNATIONAL JOURNAL OF INNOVATIVE RESEARCH

IN SCIENCE | ENGINEERING | TECHNOLOGY

Volume 13, Issue 4, April 2024

ISSN INTERNATIONAL
STANDARD
SERIAL
NUMBER
INDIA

Impact Factor: 8.423

9940 572 462

6381 907 438

ijirset@gmail.com

www.ijirset.com

Enhancing Brain Tumor Classification by using Deep Learning Approach with Convolutional Neural Networks

Dr. V. Annapurna¹, A.Sai Mounika², B. Kavitha³, M. Padmani⁴, N.Vinitha⁵

Head of the Department & Associate Professor, Department of ECE, Sanskrithi School of Engineering, Puttaparthi, Andhra Pradesh, India¹

B. Tech Students, Department of ECE, Sanskrithi School of Engineering, Puttaparthi, Andhra Pradesh, India^{2,3,4,5}

ABSTRACT: This paper presents on the application of machine learning and image processing techniques for the detection of brain tumors. The process involves several key steps: starting with the input image, preprocessing techniques such as skull stripping, median filtering, and normalization are applied to make the image suitable for analysis. Image enhancement and segmentation follow, aiming to adjust digital images for better display and facilitate analysis. Morphological operators are then employed to refine the images. The next phase involves extracting features using gray level co-occurrence matrix (GLCM), preparing the data for the support vector machine (SVM) classification. The SVM is trained to distinguish between different brain tumor types (glioma, meningioma, pituitary) and normal brain images. The overall accuracy of the classification is evaluated, providing a quantitative measure of the model's performance. Through these methods, the study presents a comprehensive approach to brain tumor detection, leveraging advanced image processing and machine learning techniques to enhance accuracy and machine learning techniques to enhance accuracy and reliability identifying and classifying brain abnormalities.

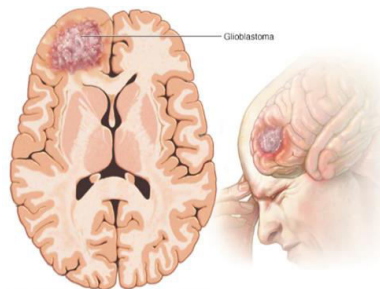
KEYWORDS: Brain tumor, GLCM, SVM, image processing, machine learning

I. INTRODUCTION

The detection and diagnosis of brain tumors are critical tasks in medical imaging with significant implications for patient treatment and prognosis. Machine learning and image processing techniques have emerged as powerful tools for aiding healthcare professionals in accurately identifying and analyzing brain tumors from medical images such as magnetic resonance imaging (MRI) scans. By leveraging computational algorithms and advanced data analysis methods, these techniques can automate and enhance the detection process, enabling earlier diagnosis and better patient outcomes. This intersection of medical imaging and machine learning holds promise for improving the efficiency and accuracy of brain tumor detection, as it enables the extraction of complex patterns and features from large volumes of imaging data that may not be easily discernible to the human eye. Moreover, the integration of machine learning models allows for the development of predictive algorithms that can assist clinicians in making informed decisions about patient care and treatment plans. In this context, this paper aims to explore and evaluate various machine learning and image processing approaches for detecting brain tumors, highlighting their potential benefits and challenges in clinical practice. By advancing the potential to revolutionize diagnostic workflows and improve patient outcomes in neuro-oncology. A brain tumor is a growth of cells in the brain or near it. Brain tumors can happen in the brain tissue. Brain tumors also can happen near the brain tissue. Nearby locations include nerves, the pituitary gland, the pineal gland, and the membranes that cover the surface of the brain.

Brain tumors can begin in the brain. These are called primary brain tumors. Sometimes, cancer spreads to the brain from other parts of the body. These tumors are secondary brain tumors, also called metastatic brain tumors.

Many different types of primary brain tumors exist. Some brain tumors aren't cancerous. These are called noncancerous brain tumors or benign brain tumors. Noncancerous brain tumors may grow over time and press on the brain tissue. Other brain tumors are brain cancers, also called malignant brain tumors. Brain cancers may grow quickly. The cancer cells can invade and destroy the brain tissue.



Brain tumors range in size from very small to very large. Some brain tumors are found when they are very small because they cause symptoms that you notice right away. Other brain tumors grow very large before they're found. Some parts of the brain are less active than others. If a brain tumor starts in a part of the brain that's less active, it might not cause symptoms right away. The brain tumor size could become quite large before the tumor is detected.

Brain tumor treatment options depend on the type of brain tumor you have, as well as its size and location. Common treatments include surgery and radiation therapy.

Types of brain tumors include:

Gliomas and related brain tumors

Gliomas are growths of cells that look like glial cells. The glial cells surround and support nerve cells in the brain tissue. Types of gliomas and related brain tumors include astrocytoma, glioblastoma, and ependymoma.

Choroid plexus tumors

Choroid plexus tumors start in cells that make the fluid that surrounds the brain and spinal cord. This fluid is called cerebrospinal fluid. Choroid plexus tumors are located in the fluid-filled cavities in the brain, called the ventricles. It's more common in children.

Embryonal tumors

Embryonal tumors begin in cells that are left over from fetal development. Embryonal tumors are malignant brain tumors that happen most often in babies and young children. It's usually located in lower back part of the brain called the cerebellum.

Meningiomas

Meningiomas are brain tumors that start in the membranes around the brain and spinal cord. Meningiomas are usually benign but sometimes they can be malignant. Meningiomas are the most common type of benign brain tumor.

Pituitary tumors

Brain tumors can begin in and around the pituitary gland. This small gland is located near the brain. Most tumors that happen in and around the pituitary gland are benign. Pituitary tumors happen in the pituitary gland itself.

Other brain tumors

Many other types of rare tumors can happen in and around the brain. Tumors can start in the muscles, blood vessels and connective tissue around the brain. Tumors can form in the bones of the skull. This type of brain cancer is called primary central nervous system lymphoma.



Symptoms.

The signs and symptoms of a brain tumor depend on the brain tumor's size and location. Symptoms also might depend on how fast the brain tumor is growing, which is also called the tumor grade.

General signs and symptoms caused by brain tumors may include:

- Headache or pressure in the head that is worse in the morning.
- Headaches that happen more often and seem more severe.
- Headaches that are sometimes described as tension headaches or migraines.
- Vomiting.
- Eye problems, such as blurry vision, seeing double or losing sight on the sides of your vision.
- Losing feeling or movement in an arm or a leg.
- Feeling very tired.
- Speech problems.
- Confusion in every day matters.
- Memory problems.
- Personality or behavior changes.
- Hearing problems.
- Feeling very hungry and gaining weight.

Brain tumors in the back of the head might cause a headache with neck pain. If the brain tumor happens in the front of the head, the headache might feel like eye pain or sinus pain.

II. LITERATURE SURVEY

[1] Ming –ni wu1 chia- chin lin2 chin-cheng-chan3, "Brain tumor detection using colour-based K- means clustering segmentation" December 2007.

"Brain Tumor Detection Using Color-Based K-Means Clustering Segmentation" is a method that employs an advanced image processing technique to identify and analyze brain tumors from medical images such as MRI scans. In this approach, the K-Means clustering algorithm is utilized to segment the brain tumor region by grouping pixels with similar color characteristics. By partitioning the image into distinct clusters based on color similarity, the tumor area can be effectively isolated from the surrounding healthy brain tissue. This segmentation process facilitates the extraction of relevant features and enables accurate detection and characterization of brain tumors. By leveraging color-based segmentation, the algorithm can differentiate between various tissues within the brain, enhancing the precision of tumor localization. Additionally, the utilization of K-Means clustering offers computational efficiency and scalability, making it suitable for processing large volumes of medical imaging data. Overall, this approach presents a promising solution for automated brain tumor detection, providing clinicians with valuable tools for early diagnosis and treatment planning, ultimately improving patient outcomes and healthcare efficiency.

Summary: Brain tumor detection via color-based K-means clustering segmentation

[2] P. Mohanaiah1, P. Sathyanarayana2, L. GuruKumar3, "Image Texture Feature Extraction using GLCM Approach" International Journal of Scientific and Research Publications, Volume 3, Issue 5, May 2013 1 ISSN 2250-3153, PP 1-2.

Image Texture Feature Extraction using GLCM (Grey-Level Co-occurrence Matrix) approach involves analyzing the spatial relationships between pixels in an image to characterize its texture. GLCM calculates the frequency of co-occurring pixel pairs at various spatial distances and orientations within the image. These co-occurrence values capture information about texture patterns such as smoothness, roughness, and regularity. By computing statistical measures from the GLCM, such as contrast, correlation, energy, and homogeneity, distinctive texture features can be extracted. For example, contrast measures the local variations in intensity between neighboring pixels, while energy represents the uniformity of texture in the image. The GLCM approach is particularly effective in discerning fine details and subtle variations in texture, making it widely used in various image analysis tasks such as medical imaging, remote sensing, and material inspection. However, successful texture feature extraction using GLCM requires careful selection of parameters such as the distance and direction of pixel pairs, as well as the number of gray levels considered. Additionally, preprocessing steps such as image normalization and segmentation may be necessary to enhance the robustness and accuracy of texture feature extraction.

Summary: GLCM method extracts image texture features for analysis.

[3] Chauhan, S., More, A., Uikay, R., Malviya, P., & Moghe, A.A. (2017). Brain tumor detection and classification in MRI images using image and data mining. 2017 International Conference on Recent Innovations in Signal processing and Embedded Systems (RISE), 223-231.

Brain tumor detection and classification in MRI images involves the application of image and data mining techniques to identify and categorize abnormalities within brain scans. Initially, MRI **Summary:** Detect brain tumors in MRI images using image and data mining.

[4] Yu-Dong Zhang and Lenan Wu, "An Mr Brain Images Classifier via Principal Component Analysis and Kernel Support Vector Machine," Progress in Electromagnetics Research, Vol. 130, 369-388, 2012.

The development of an MR (Magnetic Resonance) brain images classifier employing Principal Component Analysis (PCA) and Kernel Support Vector Machine (SVM) represents a significant advancement in medical imaging analysis. By utilizing PCA, the high-dimensional MR brain images are transformed into a lower-dimensional space, preserving essential information while reducing computational complexity. This reduction facilitates the subsequent classification process. The Kernel SVM, a powerful machine learning algorithm, is then applied to classify brain images based on the extracted features. The combination of PCA and Kernel SVM enables accurate classification of MR brain images, aiding in the diagnosis and treatment of neurological disorders. This approach not only enhances diagnostic accuracy but also offers insights into disease progression and treatment response, ultimately contributing to improved patient care and outcomes in neuroimaging. Additionally, the utilization of machine learning techniques such as PCA and SVM underscores the growing role of artificial intelligence in medical imaging, promising further advancements in the field of radiology and neurology.

Summary: Brain image classifier using PCA and kernel SVM.

[5] Swiebocka-Wiek J. (2016) Skull Stripping for MRI Images Using Morphological Operators. In: Saeed K., Homenda W. (eds) Computer Information Systems and Industrial Management. CISIM 2016. Lecture Notes in Computer Science, vol 9842.

Summary: Skull stripping for MRI using morphological operators enhances segmentation accuracy.

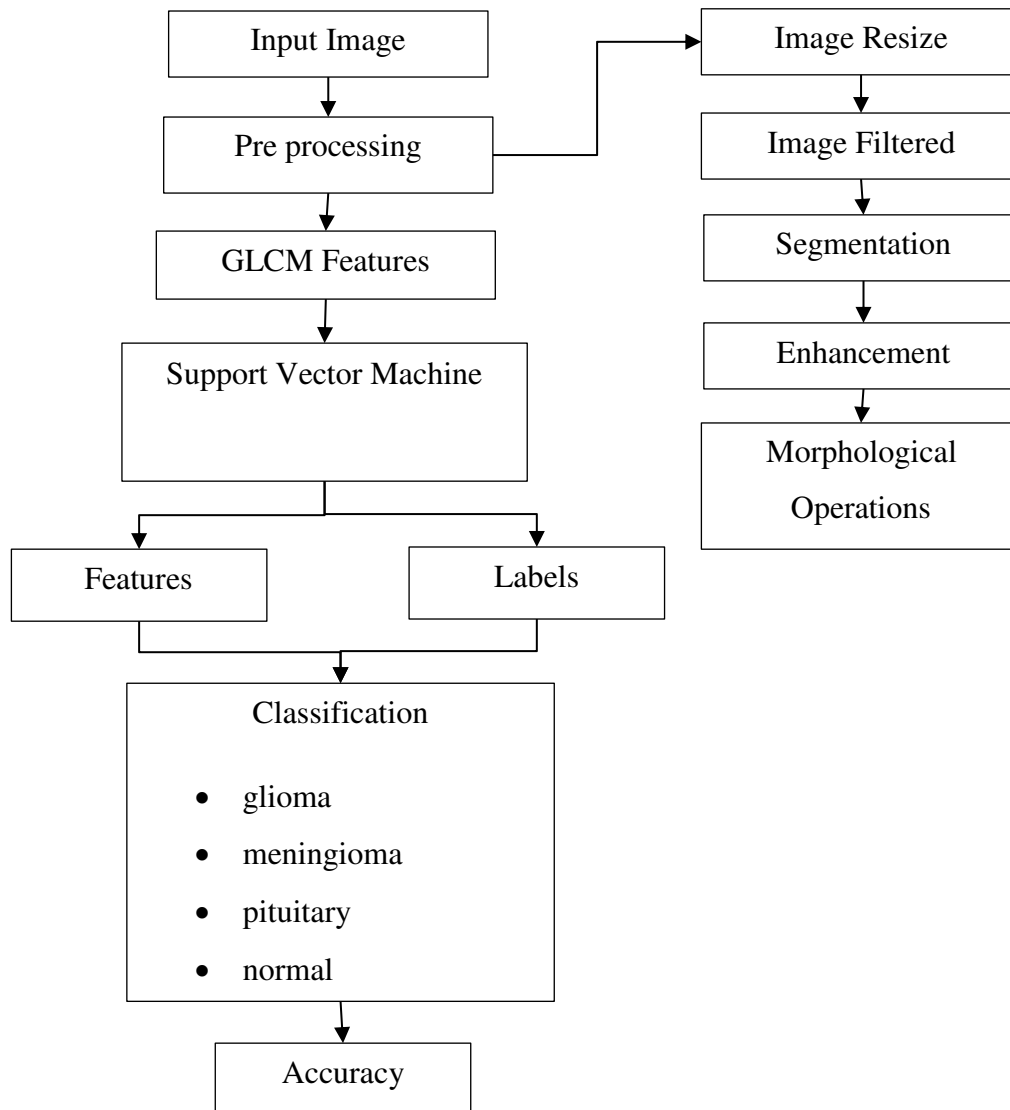
[6] Avinash Uppuluri (2021). GLCM texture features (<https://www.mathworks.com/matlabcentral/fileexchange/22187-g lcm-texture-features>), MATLAB Central File Exchange. Retrieved June 9, 2021.

GLCM (Gray-Level Co-occurrence Matrix) texture features are a set of statistical descriptors commonly used in image processing and analysis to quantify the texture properties of an image. The GLCM represents the spatial relationship between pairs of pixels in an image by counting the occurrences of different combinations of gray levels at a specified distance and angle. From this matrix, various texture features can be extracted, providing valuable information about the texture patterns present in the image. These features include contrast, correlation, energy, and homogeneity, among others, which describe the overall texture complexity, uniformity, and directionality. GLCM texture features find applications in diverse fields such as medical imaging for tumor classification, remote sensing for land cover classification, and material inspection for defect detection. By quantifying the texture characteristics of an image, GLCM texture features enable more robust and comprehensive image analysis, facilitating tasks such as classification, segmentation, and characterization in various domains.

Summary: Matlab file exchange for GLCM texture feature extraction.

III. PROJECT DESCRIPTION.

BLOCK DIAGRAM



Methodology:

Preprocessing:

Preprocessing in image processing refers to a set of techniques applied to raw images before their analysis or further processing. These techniques aim to enhance the quality of images, reduce noise, and extract relevant information to improve the performance of subsequent algorithms or tasks. Overall, preprocessing plays a crucial role in preparing images for accurate and efficient analysis, facilitating tasks such as object detection, recognition, and segmentation in fields like computer vision, medical imaging, and remote sensing.

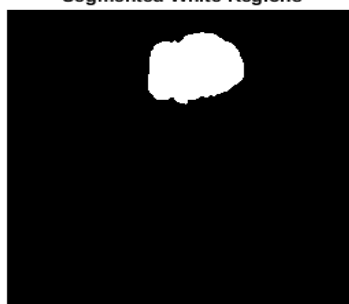
Image Resize

Image resizing is a fundamental operation in image processing involving the adjustment of the dimensions of an image while preserving its aspect ratio. This process is crucial for various applications such as web development, digital photography, and computer vision tasks. When resizing an image, the goal is often to either reduce its size to save storage space or improve computational efficiency, or to enlarge it for better visualization or printing purposes.

Segmentation:

Segmentation in image processing refers to the process of partitioning an image into multiple meaningful regions or segments based on certain criteria such as intensity, color, texture, or spatial relationships. The goal of segmentation is to simplify and/or change the representation of an image into more meaningful and easier to analyze components.

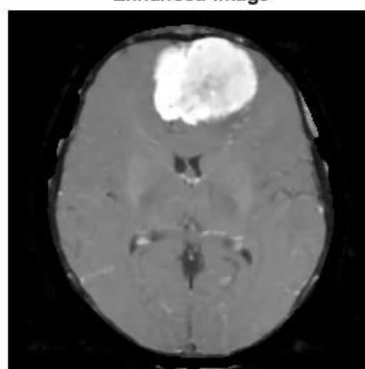
Segmented White Regions



Enhancement:

Enhancement in image processing refers to the process of improving the quality or appearance of an image to make it more visually appealing or suitable for a specific application. This can involve various techniques aimed at adjusting the image's contrast, brightness, sharpness, or removing noise or other artifacts. Enhancement plays a crucial role in improving the interpretability of images in fields such as medical imaging, satellite imaging, and surveillance, where clear and detailed visuals are essential for analysis and decision-making.

Enhanced Image

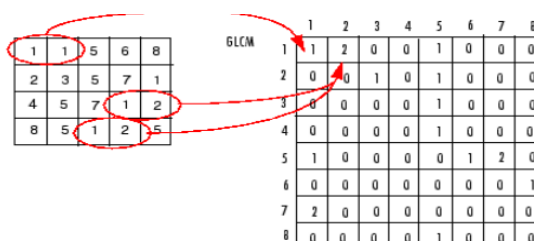


GLCM Features:

Another name for a gray-level co-occurrence matrix is a gray-level spatial dependence matrix. Gray co-matrix creates the GLCM by calculating how often a pixel with gray-level (grayscale intensity) value i occurs horizontally adjacent to

a pixel with the value j . Gray Level Co-occurrence Matrix (GLCM) is a method used for texture analysis in images. In MATLAB, GLCM features refer to statistical measures computed from a matrix that describes the spatial relationships of pixel intensities in an image. The GLCM is essentially a 2D histogram that captures how often pairs of pixel intensities with specific spatial relationships occur in the image. It provides valuable information about the texture and structure of the image.

Process Used to Create the GLCM



Drawbacks of Existing System

- Initial choices in K-means impact results, affecting tumor detection accuracy.
- Color segmentation might have trouble adapting to different tumor appearances accurately.
- Clusters might be too small, making it hard to see tumors.
- The method might have trouble with different types of tumors.

V. PROPOSED SYSTEM

The methodology involves several sequential steps for brain tumor detection using a combination of machine learning and image processing techniques. Initially, input images are subjected to preprocessing, including filtering, segmentation, enhancement, and morphological operations, to refine and prepare them for analysis. Following preprocessing, GLCM (Gray-Level Co-occurrence Matrix) features are extracted from the images to capture texture information crucial for classification. These features are then fed into a support vector machine (SVM) for training and classification, distinguishing between different types of brain tumors (glioma, meningioma, pituitary) and normal brain images. The accuracy of the classification model is evaluated to assess its performance in accurately identifying and categorizing brain tumors. This methodology integrates image processing methods to enhance image quality and extract relevant features, which are subsequently utilized by a machine learning algorithm for robust and accurate classification of brain tumor types, ultimately contributing to the advancement of medical imaging and diagnosis techniques.

VI. CONCLUSION

In conclusion, this study showcases a comprehensive methodology for the detection of brain tumors through the integration of machine learning and image processing techniques. By meticulously outlining each step, from preprocessing to feature extraction and classification, the research demonstrates a systematic approach to analysing medical images for identifying various brain tumor types and distinguishing them from normal brain tissue. The application of morphological operators and GLCM texture features enhances the quality of the images and provides valuable insights into the texture properties of the tumors. The utilization of support vector machine classification further refines the analysis, enabling accurate categorization of brain abnormalities. The evaluation of the classification accuracy offers a quantitative measure of the model's performance, validating the effectiveness of the proposed methodology. Overall, this study contributes to the advancement of medical imaging by offering a robust framework for brain tumor detection, emphasizing the importance of leveraging sophisticated image processing and machine learning techniques to improve diagnostic accuracy and reliability in clinical practice.

REFERENCES

- [1] https://www.medicinenet.com/brain_tumor_symptoms/vi_ews.htm
 [2] Ming –ni wu1 chia- chin lin2 chin-cheng-chan3, “Brain Tumor Detection Using Color-



- Based K-Means Clustering Segmentation” December 2007 DOI:10.1109/IIHMSP.2007.4457697, PP 1-3
- [3] P. Mohanaiah¹, P. Sathyanarayana², L. GuruKumar³, “Image Texture Feature Extraction using GLCM Approach” International Journal of Scientific and Research Publications, Volume 3, Issue 5, May 2013 1 ISSN 2250-3153, PP 1-2
- [4] Chauhan, S., More, A., Uikey, R., Malviya, P., & Moghe, A.A. (2017). Brain tumor detection and classification in MRI images using image and data mining. 2017 International Conference on Recent Innovations in Signal processing and Embedded Systems (RISE), 223-231.
- [5] Yu-Dong Zhang and Lenan Wu, "An Mr Brain Images Classifier via Principal Component Analysis and Kernel Support Vector Machine," Progress in Electromagnetics Research, Vol. 130, 369-388, 2012.
- [6] Swiebocka-Wiek J. (2016) Skull Stripping for MRI Images Using Morphological Operators. In: Saeed K., Homenda W. (eds) Computer Information Systems and Industrial Management. CISIM 2016. Lecture Notes in Computer Science, vol 9842. Springer, Cham. https://doi.org/10.1007/978-3-319-45378-1_16
- [7]<https://www.kaggle.com/sartajbhuvaji/brain-tumorclassification-mri?select=Training>
- [8] Avinash Uppuluri (2021). GLCM texture features (<https://www.mathworks.com/matlabcentral/fileexchange/22187-g lcm-texture-features>), MATLAB Central File Exchange. Retrieved June 9, 2021.
- [9]<https://www.mathworks.com/help/images/textureanalysis-using-the-gray-level-co-occurrence-matrixg lcm.html>
- [10]<https://towardsdatascience.com/support-vector-machines-svm-c9ef22815589>
- [11]<https://www.mathworks.com/help/images/morphologicaldilation-and-erosion.html>



INTERNATIONAL
STANDARD
SERIAL
NUMBER
INDIA



INTERNATIONAL JOURNAL OF INNOVATIVE RESEARCH

IN SCIENCE | ENGINEERING | TECHNOLOGY

 9940 572 462  6381 907 438  ijirset@gmail.com



www.ijirset.com

Scan to save the contact details