

# **A Survey on Mobile Communication via Intermittently for Allocation**

G.Pranusha<sup>1</sup>, N.Veerapandiyan<sup>2</sup>

P.G. Student, Department of Computer Engineering, Prathyusha Engineering College, Chennai, Tamilnadu, India<sup>1</sup>

Associate Professor, Department of Computer Engineering, Prathyusha Engineering College, Chennai, Tamilnadu,  
India<sup>2</sup>

**ABSTRACT:** The rise of portable distributed computing empowers versatile clients to offload applications to close-by versatile asset rich gadgets (i.e., cloudlets) to lessen vitality utilization and enhance execution. Be that as it may, because of versatility and cloudlet limit, the associations between a portable client and versatile cloudlets can be discontinuous. Subsequently, offloading moves made by the versatile client might fizzle (e.g., the client moves out of correspondence scope of cloudlets). In this paper, we build up an ideal offloading calculation for the portable client in such an irregularly associated cloudlet framework, considering the clients' nearby load and accessibility of cloudlets. We look at clients' portability designs and cloudlets' affirmation control, and infer the likelihood of effective offloading activities logically. We plan and tackle a Markov choice procedure (MDP) model to acquire an ideal approach for the versatile client with the target to minimize the calculation and offloading costs. Moreover, we demonstrate that the ideal approach of the MDP has an edge structure. In this manner, we present a quick calculation for vitality compelled clients to settle on offloading choices. The numerical results demonstrate that the scientific type of the fruitful offloading likelihood is a decent estimation in different versatility cases. Besides, the proposed MDP offloading calculation for portable clients beats ordinary gauge plans.

**KEYWORDS:** Markov choice procedure, offloading, versatile client.

## **I. INTRODUCTION**

The idea of distributed computing has been reached out to a versatile worldview. Cloud suppliers are not so much to be business-level suppliers, for example, Amazon. The asset rich and trusted gadgets joined with the Internet, e.g., a bunch or a vehicular base station, to be specific a cloudlet, can likewise give cloud-like administrations to close-by cell phones via Wi-Fi and cell associations. Cell phones (i.e., clients) and cloudlets can frame a little scale cloudlet-based framework. In such a framework, a portable client has an open door to get to and offload calculation employments to adjacent cloudlets to enhance the execution and decrease nearby execution cost.

Then again, challenges in offloading in portable cloud situations exist. Firstly, offloading may not generally accomplish the least cost because of conceivable high correspondence and remote execution costs. In this manner, a portable client needs to settle on a choice whether to execute an occupation locally on the cell phone or offload to adjacent portable cloudlets. In this way, a dynamic choice making calculation is essential. Also, arbitrary inaccessibility of remote associations in portable cloud situations has not got sufficient consideration. The clients and cloudlets might change their areas and gotten to be detached from one another. This will bring about offloading disappointment. Also, affirmation arrangements received by cloudlets might likewise bring about dismissals of offloading solicitations from versatile clients. This discontinuous remote association has to be considered.

In this paper, we mean to address the above difficulties. We propose a Markov choice procedure (MDP) based offloading calculation for the versatile clients in a cloudlet framework. The versatile client has an application to be executed. As the application is isolated into code areas (meant as stages), amid the execution, the versatile client can progressively choose to execute application stages locally on the cell phone or offload to close-by cloudlets. We define furthermore, settle the MDP model to acquire an ideal strategy to minimize calculation and correspondence expenses of

# International Journal of Innovative Research in Science, Engineering and Technology

(An ISO 3297: 2007 Certified Organization)

Vol. 5, Issue 3, March 2016

the versatile client. The MDP model considers the arbitrary portability highlight of every versatile client and in addition a need based cloudlet confirmation control strategy to break down the discontinuous associations between the portable client and cloudlets. We contrast the MDP based calculation and customary static standard offloading plans with settled offloading choices. Numerical results demonstrate that, the proposed MDP offloading calculation outflanks routine gauge plans in terms of expected expense. To the best of our insight, there is no current work on stochastic displaying and element enhancement of a fine-grained code-level offloading choice, which considers offloading disappointments brought on by the versatility of portable clients and affirmation control approach of cloudlets in a discontinuously joined cloudlet framework.

The significant commitments of this paper are as per the following:

- We propose a MDP-based model for a portable client in a discontinuously associated cloudlet framework to get an ideal offloading arrangement. The strategy decides offloading/nearby execution activities in view of the condition of the portable client to accomplish the base fetched.
- We demonstrate a portable client dissemination in an irregular cloudlet framework as a Poisson point process (PPP).
- We then get achievement probabilities of offloading activities with restricted information of system parameters. These probabilities are utilized as a part of the MDP to get an ideal offloading approach.
- We demonstrate that the ideal arrangement of the MDP is a limit approach. We present a calculation with limited blunders for the portable client to make offloading/ nearby execution activities in light of the limit arrangement.

Whatever is left of this paper is sorted out as takes after. Area 3 depicts the framework model for a versatile cloudlet environment. the MDP model is detailed and understood to minimize the calculation and offloading costs from a client's viewpoint, considering the client's neighborhood load and the accessibility of cloudlets in the encompassing range. Besides, the presence of edge strategy is demonstrated in MDP. Area 5 ponders the portability highlight of versatile clients, and determines an arrangement of scientific expressions for portable clients to gauge the likelihood of effective offloading activities.

## II. RELATED WORK

### Versatile Cloud System: Architectures

Versatile distributed computing is alluded to as a cloud system which empowers cell phones (e.g., cell phones and tablets) to move their information stockpiling and information processing to cloud suppliers. To completely abuse the capability of distributed computing, the idea of a cloudlet, was proposed to utilize different neighborhood asset rich gadgets (e.g., a portable base station) as cloud servers, rather than business cloud suppliers (e.g., Amazon) at the furthest end of the Internet.

Exhibited a far reaching review of portable cloud what's more, its applications. introduced a structural engineering of a cloudlet framework to flawlessly handle versatile clients' calculation demands. Moreover, a general structural planning for impromptu versatile clients to shape a self-governing portable cloud framework was proposed in, where some portable clients might go about as cloudlets to give cloud administrations to others when they have excess assets. [1] The actualized models of system code parceling and offloading calculations on the current architectures. Also, [2] analyzed a few famous existing portable cloud framework models and executions.

### Apportioning and Offloading in Mobile Cloud

As expressed in [3], the present day asset rich, vitality productive cell phones and high data transfer capacity remote associations empower versatile clients to offload employments to the cloudlet as a down to earth worldview. called attention to that offloading some portion of versatile amusement codes can lessen vitality utilization from portable clients' viewpoint, such that the playing time of the versatile diversion can be expanded. Demonstrated that reducing so as to offload can advantage portable client's vitality utilization when the employments to be executed require a lot of calculation asset and time (i.e., numerous directions). On the other hand [4], additionally demonstrated that offloading is not generally valuable to versatile clients as far as vitality sparing, particularly when the offloading process includes serious correspondences. The offloading choices of uses and parts of uses ought to be adjusted ideally. Ideal offloading

# International Journal of Innovative Research in Science, Engineering and Technology

(An ISO 3297: 2007 Certified Organization)

Vol. 5, Issue 3, March 2016

choices could be made either in a static way or a dynamic way. Utilized an expense diagram way to deal with evaluate an immediate expense of every code segment. At that point the offloading plan for every code segment is chosen statically in a disconnected from the net way, depending exclusively on the code segment states. proposed a static and element parceling and offloading plans. The plan executes a diagram slicing calculation to order code areas into various offloading choice set. asserted that portable clients might work in various outside situations and with evolving workloads, such that static apportioning of occupations between cell phones and cloud may not accomplish ideal results with such externalities. Subsequently, a straight programming model for powerfully dividing of an application was proposed. what's more, given a fantastic perspective of the entire enhancement procedure of a versatile client's offloading choices. Like,a straight streamlining methodology was embraced in and to locate the ideal offloading choices in different applications, for example, face acknowledgment what's more, cell phone diversions. Moreover, and created programmed apportioning of utilizations with insignificant developer's contribution. Thus, this makes fine grained code area offloading conceivable. In light of ThinkAir[5], then again, considered the versatility of a portable cloud, i.e., the capacity to handle different versatile clients rather than one client at the cloud side.

### III. SYSTEM MODEL Framework Description

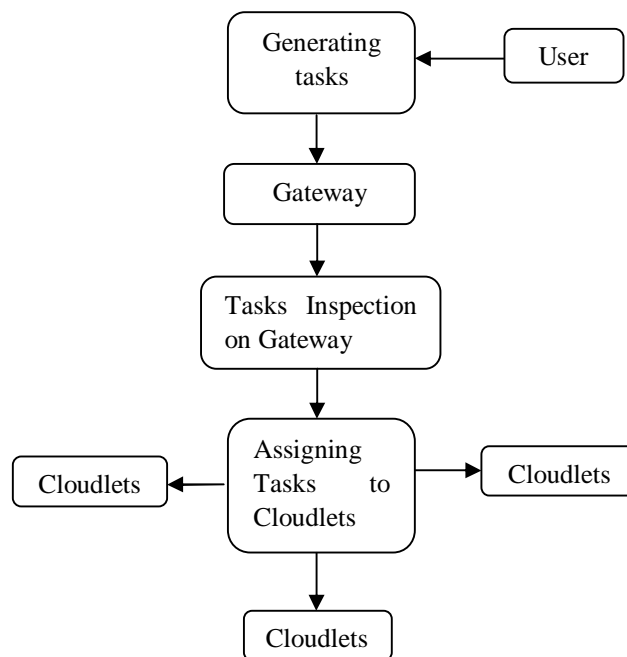


Figure: 4.1 System Architecture for Mobile Cloudlet System

In a cloudlet framework, we consider a specific versatile client which can be served by various portable cloudlets, figure demonstrates the construction modeling of the versatile client, where the cell phone of the client contains a processor, information stockpiling segments, for example, memory and reserve, a solitary server FIFO line to store arriving employments pending for execution, and a remote interface.

The occupation being recovered from the line and prepared is separated into a succession of fine-grained code section [6] , defined as application stages. The code segments can be either pre-decided or chose by the portable client progressively (e.g., setting break focuses). Handling a vocation implies executing application stages in a specific grouping. The employment preparing is done when the application travels to a way out stage, which is characterized as the last period of the occupation to handle.

## International Journal of Innovative Research in Science, Engineering and Technology

(An ISO 3297: 2007 Certified Organization)

Vol. 5, Issue 3, March 2016

Customarily, without cloud or cloudlets, the client needs to execute all the application stages on the versatile device, using nearby execution parts, i.e., processor, memory and reserve. In any case, in the portable cloudlet framework, the client has a choice to offload parts of the application (i.e., an application stage) to the cloudlets adjacent, which might conceivably offer higher figuring power, and subsequently, bring down execution cost. In this work, we outline a dynamic calculation for the versatile client to choose whether to offload or not.

1) During the application execution, we expect a period interim  $t$  which is sufficiently long for the client to wrap up any application stage locally or remotely on cloudlets. Each of such time interims is characterized as a choice period. Amid a period, once an application stage is effectively executed or fizzled, the client begins the following choice period instantly. For straightforwardness of documentation,  $t-1$  and  $t+1$  demonstrate the past and next choice periods, separately.

2) At the start of every choice period, the client watches the present framework states, i.e., the quantity of employments  $Q$  in the line, the application stage  $G$  that the client is executing, and the quantity of available cloudlets  $N$ .

3) Based on the watched composite state  $S = (G;Q;N)$  of the framework, the client registers the quick expenses of neighborhood execution and offloading. Based on these prompt expenses of the present state  $S$ , the client makes a move choice  $A(S)$  (or  $A$  for short) of either executing the application stage locally on the cell phone (signified as  $A = 0$ ) or offloading to the cloudlets (indicated as  $A = 1$ ).

4) However, an offloading activity is not generally fruitful, because of the client portability and additionally the affirmation control approach of the cloudlets. An offloaded application stage might come up short. Thus, the client needs to restore and execute the fizzled application stage once more (either locally or remotely) in the following choice period.

In the framework show, a Markov choice procedure (MDP) is utilized as an improvement strategy, with the plan to determine a financially savvy ideal offloading calculation from the point of view of a portable client. To detail the MDP, the framework is required to have an arrangement of states and activities, portraying the working statuses and offloading choices of the versatile client. Besides, a prompt expense will be caused to the versatile client in each framework state. The quick cost capacity is characterized and connected. The portability highlight of every client must be considered in the state moves and prompt expense capacity, which is displayed utilizing a spatial Poisson process as characterized.

The MDP advancement is communicated as a Bellman mathematical statement, and fathomed utilizing a quality emphasis algorithm. Furthermore, we demonstrate that the ideal arrangement of the MDP has a limit structure. Taking into account the edge structure, we propose a quick estimate algorithm to effectively accomplish offloading choices with limited execution. In spite of the fact that OBJ-2 is not ideal contrasted and OBJ-1, the calculation multifaceted nature is fundamentally lower.

### Definitions and Assumptions for Optimization Model

To add to the ideal offloading calculation for the portable client in such a cloudlet framework, we figure and settle a MDP model. The streamlining model has the accompanying definitions and suppositions.

### Occupations and Application Phases

The line is utilized to store approaching employments from the client. The line length (i.e., the quantity of occupations in the line) is meant by  $Q$ . Without loss of simplification, we expect that the occupation entry is a Poisson process. Other occupation entry examples could likewise be connected in the MDP model. Once work is recovered from the line by the versatile client, the occupation will be separated into application stages. Every stage is marked as  $G$ . For instance,  $G = 1$  demonstrates the face location stage. In this model, a stage is a nuclear unit handled by the portable client.

An application stage  $G$  includes codes and information to be handled in the present choice period. The codes are created by applications, while the information are delivered by data, yield, and provisional put away records. In this work, we consider the case that the codes and information are completely portable, which implies that both the codes and information can be either executed locally or offloaded to the cloudlet. We indicate  $(G)$  as the extent of codes and information of an application stage  $G$  (i.e., size of  $G$  for short). For instance, when the versatile client is at the

# International Journal of Innovative Research in Science, Engineering and Technology

(An ISO 3297: 2007 Certified Organization)

Vol. 5, Issue 3, March 2016

component extraction and grouping stage, the span of the stage incorporates info information went from the past stage, a photograph taken, and related codes to prepare the photograph. The versatile client picks either to locally execute the element extraction and arrangement calculations to prepare the photograph or to offload the codes and information to the cloudlets to execute [7].

## Portability and Cloudlet Availability

We expect that the topographical conveyances of both cloudlets and versatile clients take after an autonomous Homogeneous Poisson Point Process (HPPP) [8].

Toward the start of a choice period, a versatile client might watch  $N$  adjacent cloudlets. This number  $N$  is alluded to as number of cloudlets, demonstrating the present number of cloudlets in the contiguous zone that the client can offload application stages to. A cloudlet is just available to the versatile client if a remote association can be set up. Let  $R$  indicate the bidirectional correspondence separation between the cloudlet and the portable client. The client can offload an application stage to and get the outcome from the cloudlet, if the separation between them is not exactly or equivalent to  $R$ .

Taking into account the HPPP supposition for the topographical dispersion of cloudlets, the likelihood that the client can access  $k$  cloudlets in the present choice period can be ascertained by the likelihood mass capacity (PMF) of HPPP. as takes after:

$$Pr\{K = k\} = e^{-\pi R^2 \lambda_c} \frac{(\pi R^2 \lambda_c)^k}{k!}, \quad k = 0, 1, 2, \dots \quad (1)$$

Where  $\lambda_c$  is the dispersion thickness of cloudlets in the framework.

The accompanying conditions must hold for the client to offload and acquire the outcome from executing an application stage.

- Toward the start of a choice period, the client has no less than one cloudlet in the correspondence extent to offload an application stage to.
- The client can get the consequence of the application stage or the disappointment signal before the end of the choice period.

In any case, because of the versatility of the portable client or the cloudlets, offloading activities may not be constantly effective regardless of the possibility that there are open cloudlets near the versatile client. The accompanying circumstances might happen. Toward the start of a choice period, the client is inside of the bidirectional correspondence separation  $R$  of a cloudlet. Notwithstanding, before the cloudlet transmits back the outcome, the client moves out of the correspondence scope of the cloudlet. Therefore, the aftereffect of the offloading solicitation will neglect to achieve the client. Other than the versatility issue, the cloudlet accessibility additionally relies on upon the cloudlet's affirmation control choice. That is, the cloudlet might reject a solicitation from a client with a specific probability. We characterize a likelihood  $\eta_a$  of effectively offloading to a cloudlet and accepting the outcomes, in particular cloudlet accessibility.

$$\eta_a = \mathbb{E} \left\{ \varepsilon \cdot \frac{T - \tau}{T} \right\}$$

where  $\varepsilon$  is the likelihood that the cloudlet acknowledges the client's offloading demand (i.e.,  $1 - \varepsilon$  is the cloudlet blackout likelihood).  $T$  is the client's stay time inside the correspondence range  $R$  of the cloudlet.  $\tau$  is the execution time of the offloaded application stage on the cloudlet, in addition to roundtrip time (RTT) of the remote transmission.

In this manner, the physical significance of is the likelihood  $\frac{T - \tau}{T}$  of fruitful offloading given that the cloudlet dependably acknowledges offloaded employments. We determine an estimation of  $\eta_a$  of a versatile client in the proposed framework in Section 5.



# International Journal of Innovative Research in Science, Engineering and Technology

(An ISO 3297: 2007 Certified Organization)

Vol. 5, Issue 3, March 2016

Practically speaking, the execution time  $T$  of a project without human-PC collaboration is around  $10^{-4} \sim 10^{-2}$  s. The RTT of Wi-Fi systems is in the request of tens to several ms, and the correspondence scope of any cloudlet gadget is measured in meters [19]. In this manner, it is sensible to assume  $T - \tau > 0$  in the mean  $\eta_a$ .

## Advancement formulation

In this area, we propose a MDP model to depict the ideal offloading issue of a portable client. Firstly, we characterize the state and activity spaces of the portable client. State move frameworks are then determined. A short time later, the MDP streamlining issue is communicated by a Bellman mathematical statement, and explained by utilizing a worth cycle calculation. Moreover, limit strategies are found in the arrangements of the MDP, taking into account which an estimate offloading choice calculation is proposed.

## IV. CONCLUSION

We have proposed a Markov choice procedure (MDP) based element offloading calculation for a portable client in a versatile cloudlet framework. Think about that as a portable application can be isolated into numerous stages, the client can settle on a choice to run every stage locally or offload to close-by cloudlets. In addition, offloading disappointments brought on by both client versatility and cloudlet confirmation control have been considered. The choice is enhanced to accomplish the most minimal expense (e.g., calculation and correspondence costs) by settling the MDP model utilizing the quality cycle calculation. For the proposed MDP model, we have demonstrated a presence of a limit arrangement furthermore presented a quick choice calculation for the portable client to make successful and satisfactory execution. The numerical results have demonstrated that the investigative estimations of cloudlet accessibility is generally precise for different client portability. Moreover, the proposed MDP-based element offloading calculation beats other pattern plans, which don't consider the condition of the framework.

## REFERENCES

- [1] B.-G. Chun and P. Maniatis, "Dynamically partitioning applications between weak devices and clouds," in Proc. of the 1st ACM Workshop on Mobile Cloud Computing & Services: Social Networks and Beyond, no. 7, 2010.
- [2] D. Kovachev, Y. Cao and R. Klamka, "Mobile cloud computing: a comparison of application models," arXiv:1107.4940[cs.NI], July 2011.
- [3] M. Satyanarayanan, "Mobile computing: the next decade," in Proc. of the 1st ACM Workshop on Mobile Cloud Computing & Services: Social Networks and Beyond (MCS), June 2010.
- [4] K. Kumar and Y.-H. Lu, "Cloud computing for mobile users: Can offloading computation save energy," Computer, vol. 43, no. 4, pp. 51-56, April 2010.
- [5] S. Kosta, A. Aucinas, P. Hui, R. Mortier, and X. Zhang, "ThinkAir: Dynamic resource allocation and parallel execution in the cloud for mobile code offloading," in Proc. of IEEE INFOCOM 2012, pp. 945-953, March 2012.
- [6] H. Dong, P. Wang, and D. Niyato, "A dynamic offloading algorithm for mobile computing," IEEE Transactions on Wireless Communications, vol. 11, no. 6, pp. 1991-1995, June 2012.
- [7] Y.-C. Wang, K.-T. Cheng, "Energy-optimized mapping of application to smartphone platform,?A case study of mobile face recognition," in Proc. of 2011 IEEE Computer Society Conference on Computer Vision and Pattern Recognition Workshops (CVPRW), pp. 84-89, June 2011.
- [8] D. Moltchanov, "Distance distributions in random networks," Ad Hoc Networks, vol. 10, pp. 1146-1166, August 2012.