

Storm Effects on F-region Critical Frequency foF₂ and Propagation Parameter M(3000)F₂ over Equatorial (Jicamarca) and Low (Madimbo) Latitude Stations - A Comparative Study

Anju Nagar

Assistant Professor, Department of Physics, S M S Govt Model Science College, Gwalior,
Madhya Pradesh, India

ABSTRACT: Using the simultaneous data from an equatorial station, Jicamarca (12°S, 283°E) and low latitude station Madimbo (22°S, 031°E) during the low solar activity period from January 2006 to December 2010, a comparative study of the average and seasonal effects of storms on the ionospheric parameters, such as critical frequency of F₂- layer and the Propagation parameters M(3000)F₂ are presented. The results show that during summer the response of foF₂ are quite opposite for the two locations after 36 hrs of the commencement of the storm while propagation parameter behaves differently after the SSC for two locations during summer as well as in equinox. During winter the response of foF₂ and M(3000)F₂ are almost same but reduced on scale in case of M(3000)F₂. The effects of magnetic storm on both parameters are complex and deviate greatly from average behaviour for two locations.

KEYWORDS: F-region, Critical frequency, propagation parameter, Ionospheric disturbances.

I. INTRODUCTION

A geomagnetic storm is a marked temporary disturbance of the earth's magnetic field caused by space weather. During geomagnetic storms the magnetospheric energy input into the polar upper atmosphere can significantly modify the chemical and dynamics/electrodynamics processes of the ionosphere-thermosphere (I-T) system. The ionospheric activity is not always related to geomagnetic storms. Especially in the low and lower mid-latitude region, ionospheric variability occurs without geomagnetic storms. The ionosphere displays large day to day variability even on magnetically quiet periods and not always easy to define a storm. A geomagnetic storm is closely related to ionospheric activity and the effects of geomagnetic storm on the ionosphere are different for different latitudes even in the low latitude region the effects are very different. During the magnetic storms, eastward electric field is sometimes enhanced in dayside and transport ionospheric plasma to poleward. This cause decrease in the ionospheric density inside the Equatorial Ionization Anomaly (EIA) crests and enhancement outside the EIA crests.

Ionospheric storms are important for two reasons. First they constitute an important link in the complex chain of solar-terrestrial relations. Second it occurrence strongly and severely affects the ground based communication systems, rapid variations in the magnetic field can affect high frequency ionospheric propagation and related military and commercial operations and cause radio blackout. The effects of magnetic storm on the ionosphere are complex and deviate greatly from average behaviour. There are some common elements of behaviour for most storms, but it has been recognized that in the low latitude regions the ionospheric response to particular geomagnetic storm manifests some irregularities. The statistics of the ionospheric storms are reported by several authors¹⁻⁶. Using the critical frequency of the F₂-layer (foF₂) the types and onsets time of ionospheric storm related to each geomagnetic storm were statistically analyzed⁷. The results show that, the negative responses prevail at mild latitudes, whereas the positive

International Journal of Innovative Research in Science, Engineering and Technology

(An ISO 3297: 2007 Certified Organization)

Vol. 5, Issue 10, October 2016

responses prevail at low latitudes. At low latitude, positive phases commence most frequently in the daytime sector as well as night-time⁸(18~21 LT).

Recently, Simi et al.⁹ studied the ionospheric response of a geomagnetic storm (8-10 November, 2004) over the equatorial, and near equatorial latitude and revealed the important role of storm-induced O/N₂ changes, along with prompt penetration electric fields and disturbance dynamo electric fields in modulating the ionization distribution in the equatorial ionization anomaly (EIA) region during this period.

According to Abdu et al.¹⁰ under the effects of the prompt penetration electric fields and the wind disturbance dynamo electric fields, equatorial ionization anomaly (EIA) can undergo a drastic modification resulting in large ionospheric disturbances at low latitude. In a number of works¹¹⁻¹³ authors revealed that upward motion of the ionosphere can also be caused by an enhanced penetration eastward electric field. Furthermore, the increase in peak electron density (NmF₂) following an increase in height of maximum plasma density (hmF₂) and its time delay at lower latitudes was provided as evidence of travelling atmospheric disturbances (TADs) that drive positive ionospheric storms in the low and middle latitudes¹⁴. Sobralet al.¹⁵ presented some cases of foF₂ increases over low latitudes to be related to an enhanced plasma fountain. During magnetically-disturbed conditions the low-latitude electric fields and currents change substantially from their quiet time pattern. The relative roles of different mechanism responsible for the suppression of the equatorial anomaly were studied by Pavlov et al.¹⁶.

It has been recognized that geomagnetic storm manifests some irregularities more likely over equatorial and low latitude region owing to the presence of equatorial ionization anomaly phenomenon. Therefore, using the critical frequency foF₂ and propagation parameter M(3000)F₂ the effects of geomagnetic storm on the F₂ region ionosphere over an equatorial station, Jicamarca (12°S, 283°E) and a low latitude station, Madimbo (22°S, 031°E) are presented in this paper.

II. MATERIALS AND METHODS

We have selected only 45 storms for this study that occurred during January 2006 to December 2010 due to non-availability of data. The maximum negative excursion of Dst for these storms generally varied between -5nT and -85nT. To examine the seasonal effects we grouped all storms into three seasons winter, summer and equinox using the four months of data for each season [i.e. winter (November, December, January, February), summer (May, June, July, August) and Equinox (March, April, September, October)], changing summer for winter months for southern hemisphere stations .

We have also selected a typical storm occurred on 19 November 2007 which treated as individual storm for the study. The data of ionospheric parameters foF₂ and M(3000)F₂ have been obtained from space physics Interactive Data Resource (SPIDR) network (<http://spidr.ngdc.noaa.gov>) for two locations namely, Jicamarca (12°S, 283°E) and Madimbo (22°S, 031°E). The F₂-region response to geomagnetic storms were described in terms of D(foF₂) rather than foF₂ and D[M(3000)F₂] rather than M(3000)F₂. The term is the normalized deviations of the critical frequency foF₂ from the reference i.e.

$$D(foF2) = \frac{foF2 - (foF2)_{ave}}{(foF2)_{ave}} \quad (1)$$

Similarly,

$$D[M(3000)F2] = \frac{[M(3000)F2]_{ave}}{[M(3000)F2]_{ave}} \quad (2)$$

Where the reference for each hour is the average value of foF₂ [or M(3000)F₂] for the hour calculated from the five quiet days of the month (i.e. the month in which magnetic storm occurred) . We have considered the storm time, sudden storm commencement (SSC) as 0 hour and 72 hours after the SSC were analyzed for foF₂ and as well as for M(3000)F₂. The value of Ap and Kp index for this period were also obtained from SPIDR while Dst values were downloaded from the website: <http://wdckugi.kyoto-u.ac.jp/>. The interplanetary magnetic field (IMF) B_z component have been downloaded from NSSDC's OMNI database.

III. RESULTS

Average effects on foF2 and M(3000)F2

The average behaviour of several indices that describe the interplanetary and geomagnetic conditions for all the storms analyzed for 72 hours after the commencement of the storm are depicted in Fig. 1 while Fig. 2 shows the average value of the deviation of the critical frequency foF2 and the propagation parameter M(3000)F2 separately during the 45 storms for two stations.

In fig. 2, D(foF2) plot shows that there is general increase in the electron density at a maximum of the ionospheric F2 layer, then by resulting in a positive phase storm at both location. At Jicamarca after a negative phase a positive phase is being observed. The lack of negative phase in the overall mean variation is seen at Madimbo. In case of M(3000)F2, it is observed that Jicamarca shows mixed behaviour while the lack of positive phase seems at Madimbo. It is also noted that the D[M(3000)F2] variation were reduced on scale than D(foF2).

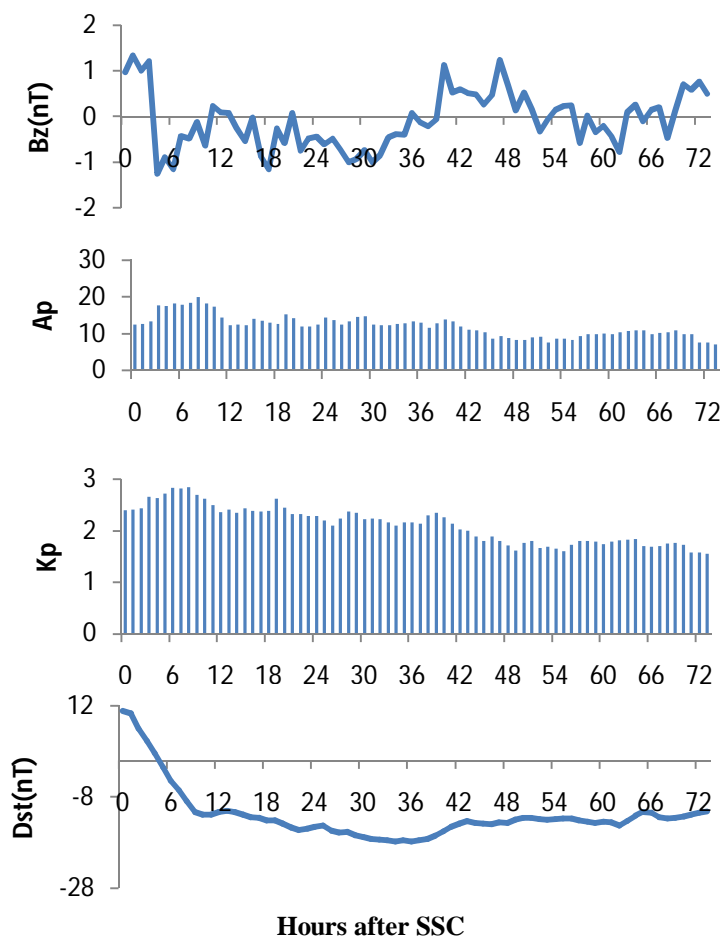


Fig.1. Average storm time variation in IMF component Bz ,Ap,Kp and Dst(nT) from top to bottom for 45 storms during the period from January 2006 to December 2010.

International Journal of Innovative Research in Science, Engineering and Technology

(An ISO 3297: 2007 Certified Organization)

Vol. 5, Issue 10, October 2016

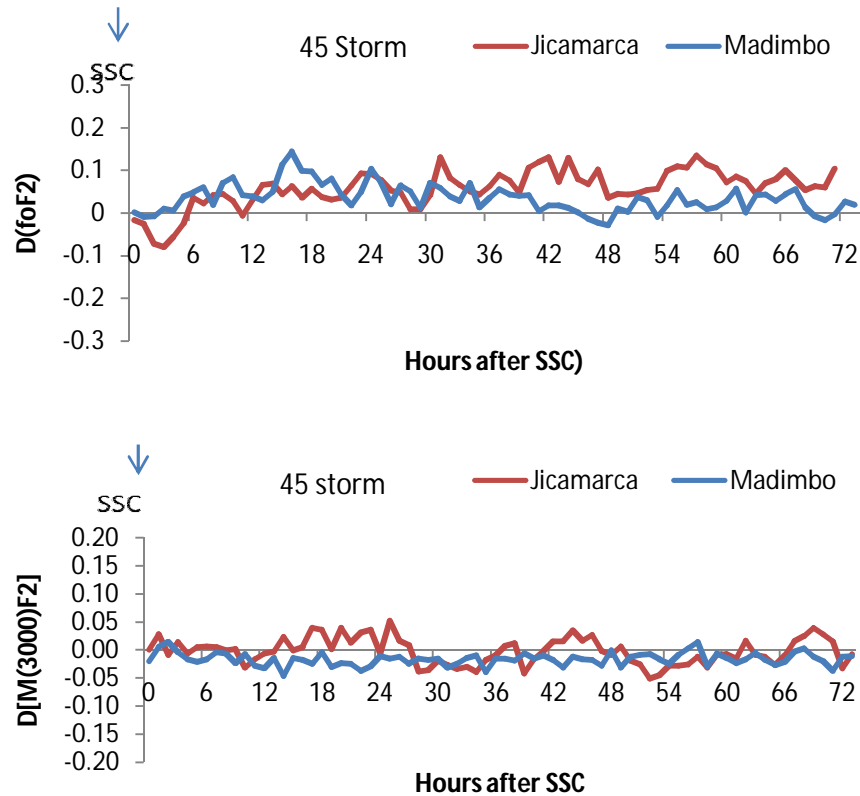


Fig. 2. Average variation in $D(\text{foF}2)$ (upper panel) and $D[\text{M}(3000)\text{F}2]$ (lower panel) for 45 storms during the period from January 2006 to December 2010.

Average seasonal effects on foF2 and M(300)F2

To investigate the ionospheric behaviour in different seasons, 45 storms have been divided into three seasons: winter, summer and equinox during the period January 2006 to December 2010. However, a similar classification of the storms was not possible as a sufficient number of storms were not available during each season. In this connection, fig. 3 to 4 shows the seasonal variation of average deviation of foF2 and M(3000)F2 respectively. From fig. 3, it is found that during winter and equinox both locations follow an averaged pattern as discussed earlier. However, Madimbo deviates from the average pattern after 42 hrs from SSC during summer. Further from fig. 4, it can be seen that during winter both locations show simultaneous depletion in M(3000)F2 but behave differently and somewhat oppositely during summer as well as in equinox.

International Journal of Innovative Research in Science, Engineering and Technology

(An ISO 3297: 2007 Certified Organization)

Vol. 5, Issue 10, October 2016

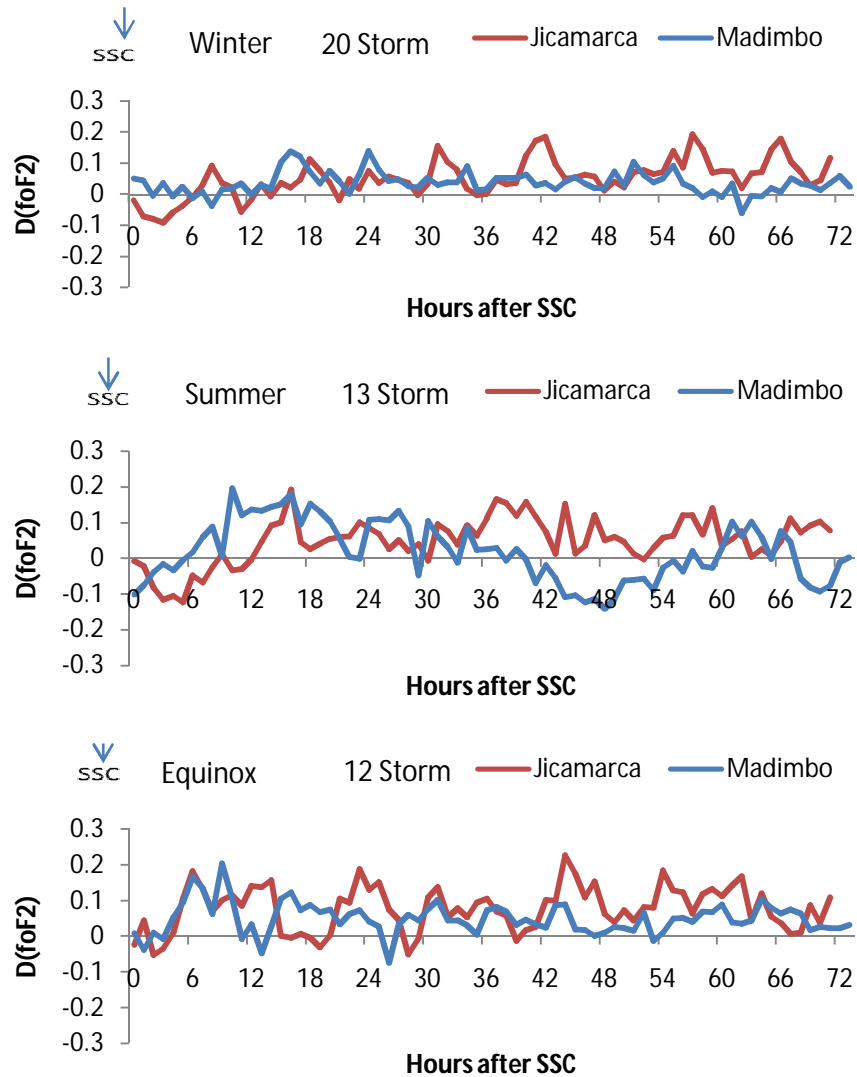


Fig. 3. Seasonal average variation in $D(\text{foF}2)$ for storms occurred during January 2006 to December 2010.

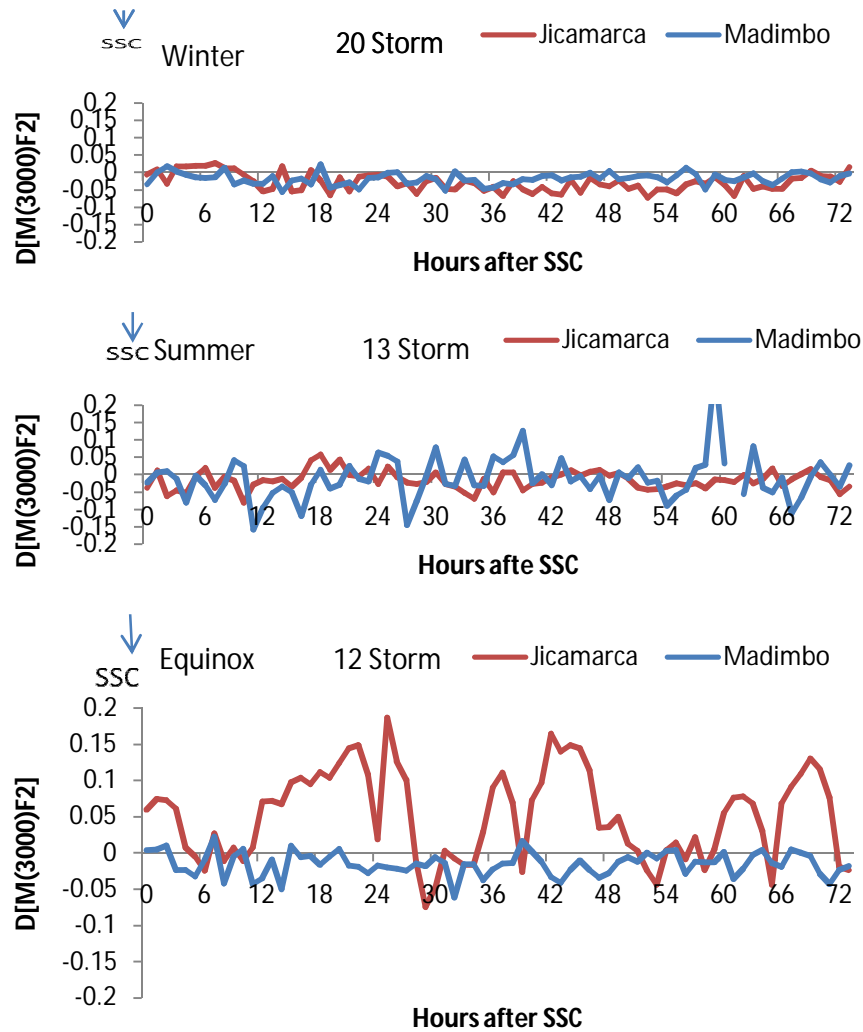


Fig. 4. Seasonal average variation in $D[M(3000)F2]$ for storms occurred during January 2006 to December 2010.

An individual storm occurred on 19 november 2007

In fig.5 we have plotted the variation of $B_z(nT)$, A_p , K_p and D_{st} (nT) indices during the considered storm while fig.6 represents the variation in $D(foF2)$ and $D[M(3000)F2]$ for 72 hours after time of SSC (consider the time of SSC as 0 hrs). The SSC is occurred at 1811 hrs (UT) on 19 November 2007.

The first Panel in fig. 5 shows that from the beginning 00 hrs, the IMF B_z was northward till 10 hrs, after which it was turned southward and reached the maximum value $-16nT$ at 16 hrs and remained negative up to 20 hrs. After that it experienced a sinusoidal wave like pattern (reduced on scale) until around 66 hrs and then again turned southward. The second and third panel of the same figure depicts that more southward turning of B_z coincides with the maximum value of K_p and A_p index. The D_{st} Plot shows two maximum negative excursion -57 and $-61nT$ at 20 at 25 hrs after SSC (Panel four). This storm was followed by a slow recovery thereafter at 68 hrs Dst value again started to drop. From the plot of the critical frequency ($foF2$) shows that at Jicamarca a positive storm effect from commencement of the storm throughout the rest of hours with maximum deviation 80% at 38 hrs. Although a short lived negative phase is observed around 5 to 14 hrs. The $foF2$ values for Madimbo do not respond during first 10 hrs and then a small negative phase at 12 hrs is observed after that it shows the considerable enhancement (positive storm effect) up to 36 hrs and a negative storm effect throughout the remaining hours.

International Journal of Innovative Research in Science, Engineering and Technology

(An ISO 3297: 2007 Certified Organization)

Vol. 5, Issue 10, October 2016

The response of M(3000)F2 values at Jicamarca is rather complex, constitute both phase alternatively after SSC, the maximum positive phase is observed at 39 hrs and maximum negative phase at 69 hrs after SSC. On the other hand, Madimbo is mostly characterized by negative phase with a 30% depletion level at 48 hrs after SSC.

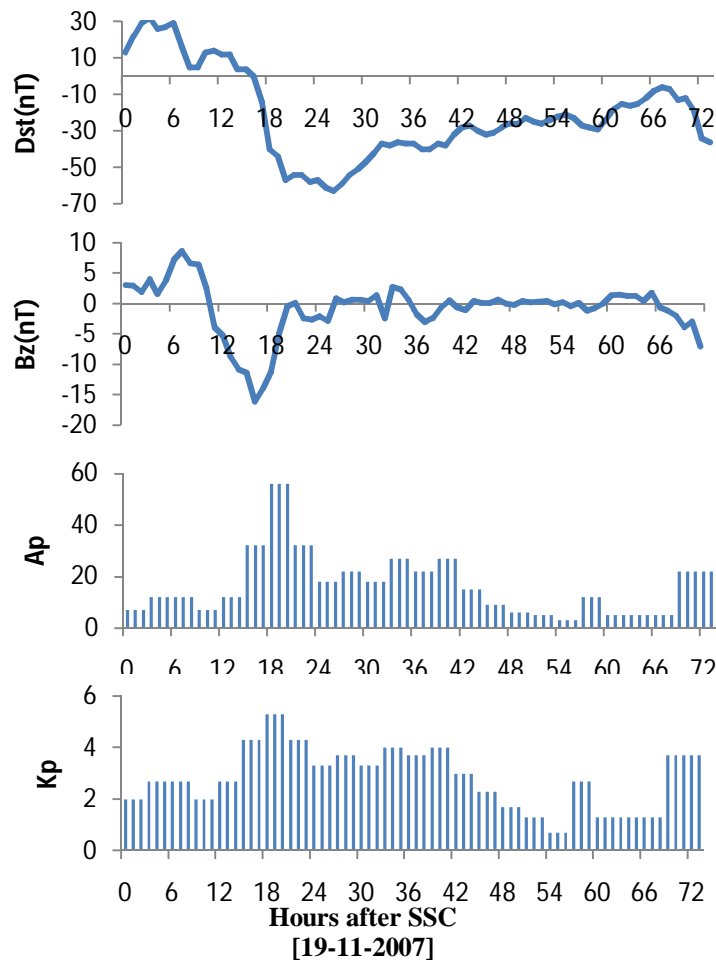


Fig. 5. Average storm time variation in IMF component Bz, Ap, Kp and Dst(nT) from top to bottom for 72 hours after SSC occurred on 19 November 2007.

International Journal of Innovative Research in Science, Engineering and Technology

(An ISO 3297: 2007 Certified Organization)

Vol. 5, Issue 10, October 2016

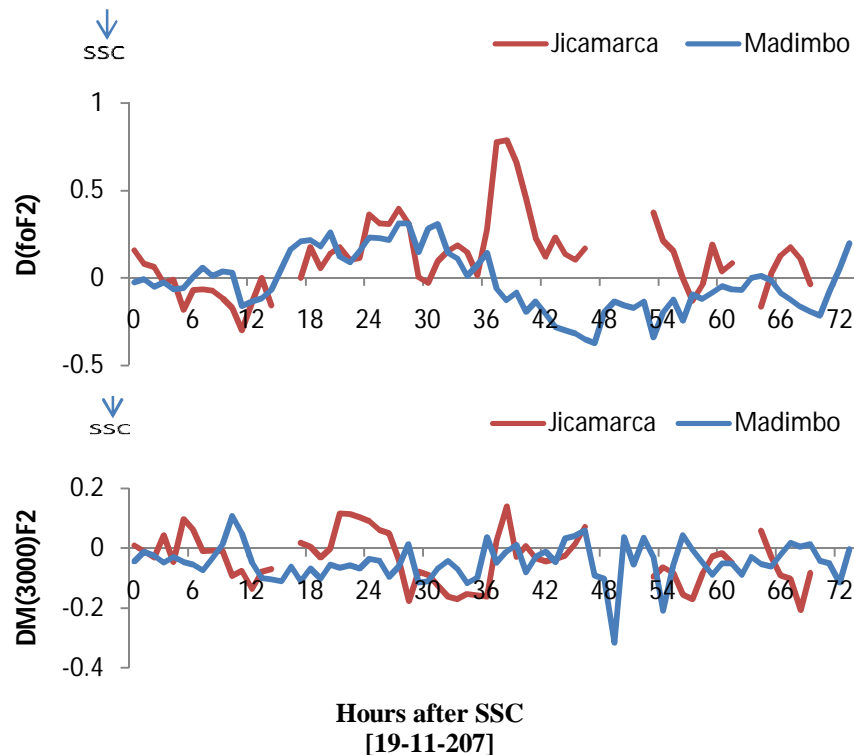


Fig. 6. Variation in D(foF2) (upper panel) and D[M(3000)F2] (lower panel) for 72 hours after SSC on 19 November 2007.

IV. DISCUSSION

Since the beginning of the space age the cause of geomagnetic activity has been sought in spite of this there are no consistent explanations obtained on the mechanisms of ionospheric storms till now¹⁷⁻²⁴. Recently, Adekoya et al.²⁵ observed the simultaneous intense depletion of foF₂ at all latitudes during the intense geomagnetic storm of August 12, 2000. They suggested that it may not be mainly due to changes in neutral composition. According to them particle precipitation known to occur at both higher and lower latitudes during very intense geomagnetic disturbances may be account for the simultaneous depletion in foF₂.

Thermospheric neutral composition changes with molecular nitrogen N₂ to atomic oxygen O(N₂/O) ratio, increase are believed to be responsible for the negative disturbances observed at mid latitudes. The same has been confirmed by measurements and model calculations²⁶⁻³¹. The storm positive phase, more significantly at low latitudes in equinox and winter, is probably due to the downwelling of thermospheric gas. The downwelling of thermospheric gas mainly caused by storm induced thermospheric winds, may cause the increase of ionization at low-latitudes without any significant change in atom-to-molecule ratio³⁰. It is believed that the storm negative disturbance is caused by the change in the thermospheric composition because of the heating of the thermosphere during magnetic storms. The occurrence of storm negative phase at mid and low-latitudes was due to equator-ward shift of the molecularly enriched air to lower latitudes by storm induced equator-ward directed circulation^{32,33}. The equator-ward penetration of negative phases displayed a seasonal behaviour in summer the negative phase was better developed at lower latitudes than in the winter and equinox. Because in summer both dynamic background thermospheric circulation and storm induced circulations reinforce each other and are directed equator-ward throughout the day²². These results are quite agreement with our findings.

The quiet time summer to winter thermospheric circulation makes the background (O/N₂) ratio smaller in summer than in winter (and equinox) at all pressure (and height) levels. The chemical effects of storm time neutral winds can therefore produce negative ionospheric storms easily in summer. Model simulations³⁴ shows that combined effects of upward ExB drift and meridonal winds produce the most significant plasma enhancement at low latitude if

International Journal of Innovative Research in Science, Engineering and Technology

(An ISO 3297: 2007 Certified Organization)

Vol. 5, Issue 10, October 2016

meridional winds blow equator-ward, the ion drag along magnetic field line will oppose the downward diffusion and keep the plasma at altitudes where the recombination rate is lower. As a result the peak density will increase significantly and also its position will shift to higher latitudes.

Zhao et al.³⁵ concluded that long duration positive storm effect at middle-low latitudes attributed to several mechanisms. According to them periodic wave structures of foF2 at middle-low latitudes in the morning sector on 14 April should be caused by TADs with phase propagation velocities ranging 400-800 m/s, while in the afternoon and night-time, the positive phase would be most probably caused by both the enhanced equator-ward winds and disturbed eastward electric fields. During the recovery phase, negative storm effect was shown to permeate to the middle-low latitudes and persisted for 2-3 days, which was due to the reduced O/N₂ according to the observation as GUVI. It is well known that the ring current becomes significantly more intense during geomagnetic storm. The energy protons present in the ring current undergo a charge exchange reaction with the ambient hydrogen atom. These energetic neutralized hydrogen atoms are no longer in a constraint to follow the magnetic field and can directly precipitate into the Earth's denser atmosphere³⁶ which is in turn is responsible for producing heating in the upper atmosphere^{37,38}. The direct insertion of energy from the ring current in the form of particle precipitation into the upper thermosphere is also believed to play a crucial role over the equatorial and low-latitude region³⁹.

The storm-induced effect over equatorial and low latitude region is very complicated owing to the presence of equatorial ionization anomaly phenomenon and many other factors. The storm induced changes in ratio (O/N₂) also play a significant role in conjunction with the storm time electric fields in modulating the spatial distribution of ionization in the EIA at a given time⁹.

Early studies showed that the formation of positive phase can be explained with the mechanism that at the time of geomagnetic storm during the sunlit hours the eastward electric field at the equatorial belt is suppressed. Due to this, the upward lift of plasma is reduced and positive phase developed at equator during main phase of storm^{11,40-41}. Also, as previous studies have shown, middle and low latitudes ionosphere can be affected with an Equatorial Anomaly (EA) expanded pole-ward and become more produced during an important storm event^{42,43}. An additional source of ionization arises from equatorial latitudes the enhancement of the zonal electric field during perturbed periods increases the upward drift and the subsequent drainage from equatorial region followed by the ambipolar diffusion down the magnetic field lines toward low latitudes. This effect could be also responsible for the delay and maintenance of positive effects at the crests⁴⁴. Delayed positive ionospheric storms have been attributed to changes in neutral gas composition⁴⁵. The storm induced circulations transports air rich in atomic oxygen from higher latitudes toward lower latitudes. The enhanced oxygen density will affect the ionization production thus producing the positive effects.

ACKNOWLEDGEMENT

The authors are thankful to the Space Physics Interactive Data Resource (SPIDR) website (<http://spidr.ngdc.noaa.gov>), World Data Center and SPDF OMNIWEB database interface at <http://nssdc.gsfc.nasa.gov> for donating their free ionosonde data (or Dstindex, Solar F_{10.7} flux, Sunspot Number, Ap&kp index), AE index and Bz index respectively for a better success of the present work.

REFERENCES

1. Balan N & Rao P B, Dependence of ionospheric response on the local time of sudden commencement and intensity of storms, *J Atmos Terr Phys (UK)*, **52** (1990) pp 269-275.
2. Lozbin V V & Pavlov A V, Solar Zenith angle dependencies of F1-layer, NmF2 negative disturbance, and G-condition occurrence probabilities, *Ann Geophys (Germany)*, **20** (2002a) pp 1821-1836.
3. Lozbin V V & Pavlov A V, G-condition in the F2 region peak electron density; a statistical study, *Ann Geophys (Germany)*, **20**(2002b) pp 523-538.
4. Mendillo M & Narvaez C, Ionospheric storms at geophysically equivalent sites part-1: Local time patterns for sub-auroral ionospheres, *Ann Geophys (Germany)*, **27**(2009) pp1679-1694.
5. Mendillo M and Narvaez C, Ionospheric storms at geophysically- equivalent sites Part 2: Local time patterns for sub auroral ionospheres, *Ann Geophys (Germany)*, **28** (2010) pp1449-1462.
6. Vijaya Lakshmi D, Balan N, Tulsiram S & Liu J Y, Statistics of geomagnetic storms and ionospheric storms at low and mid-latitudes in two solar cycles, *J Geophys Res (USA)*, **116** (2011), pp A1132.

International Journal of Innovative Research in Science, Engineering and Technology

(An ISO 3297: 2007 Certified Organization)

Vol. 5, Issue 10, October 2016

7. Qin G, Liu L B, Zhao B Q, Wan W X, Zhang M L & Ning B Q, Statistical study of the storm effects in middle and low latitude ionosphere in the East-Asian sector, *Chinese Journal of Geophysics (China)*, 51(2008) pp 435-443.
8. Adebisi S J, Adeniyi J O Adimula, I A, Joshua B & Gwani M, *world journal of engineering and pure and applied sciences (Taiwan)*, 2(2012), Effect of the geomagnetic storm of April 5th to 7th 2010 on the F2-layer of the ionosphere of Ilorin, Nigeria.
9. Simi K G, Manju G, Haridas M K M, Nayar S R P, Pant T K & Alex, Ionospheric response to a geomagnetic storm during november 8-10, 2004, *Earth Planets and space (Japan)* 65 (2013) pp 343-350.
10. Abdu M A, Sobral J H A, Paula E R & Batista I S, Magnetospheric disturbance effects on the equatorial ionization anomaly (EIA): an overview, *J Atmos Terr Phys (UK)* 53(1991) pp 757-771.
11. Tsurutani B A, Mannucci A, Iijima B, Abdu M A, Humberto J, Sobral A, Gonzalez W, Guarnieri F, Tsuda T, Saito A, Vumoto K, Fejer B, Fuller Rowell T J, Kozyra J, Foster J C, Coster A & Vasyliunas V M, Global dayside ionospheric uplift and enhancement associated with interplanetary electric fields, *J Geophysical Research(USA)*, 109 (2004) pp 1-16.A08302.
12. Huang C S & Foster J C, Long-duration penetration of the interplanetary electric field to the low-latitude ionosphere during the mainphase of magnetic storms, *J Geophysical Research (USA)* 110(2005) pp 1-13.A11309.
13. Padatella N M, Lei J, Larson K M & Forbes J M, Observations of ionospheric response to the 15 December 2006 geomagnetic storm: Long duration positive storm effect, *J Geophysical Research (USA)*, 114(2009) pp 1-10.A12313.
14. Prolss G W, On explaining the local time variation of ionospheric storm effects, *Ann Geophys (Germany)*, 11(1993) pp1-9.
15. Sobral J H A, Abdu M A, Gonzalez W D, Yamashita C S, Clua de Gonzalez A L, Batista I & Zamlutti C J, Responses of the low latitude ionosphere to very intense geomagnetic storms, *J Atmos Terr Phys (UK)*, 63(2001) pp 965-974.
16. Pavlov A V, Fukao S & Kawamura, F-region ionospheric perturbations in the low-latitude ionosphere during the geomagnetic storm of 25-27 August 1987, *Ann Geophys (Germany)*, 22 (2004) pp 3479-3501.
17. Appleton E V & Ingram L J, Magnetic storms and upper atmospheric ionization, *Nature (UK)* 136(1935) pp 548-549.
18. Seaton M J, A possible explanation of the drop in F-region critical densities accompanying many ionospheric storms, *J Atmos Terr Phys (UK)*, 8(1956) pp122-124.
19. Prolss G W, latitudinal structure and extension of the polar atmospheric disturbance, *J Geophysical Research (USA)*, 86 (1981) pp 2385-2396.
20. Burns A G, Killen T L, Carignan G R & Roble R G, Large enhancement in the O/N2 ratio in the evening sector of the winter hemisphere during geomagnetic storms, *J Geophysical Research(USA)*, 100(1995) pp 14661-14671.
21. Bunosanto M J, Ionospheric storms a review, *Space Science Reviews (Netherlands)*, 88(1999) pp 563-601.
22. Danilov A D & Lastovicka J, Effects of geomagnetic storms on the ionosphere and atmosphere, *International Journal of Geomagnetism Aeronomy (USA)*, 2(2001) pp 209-224.
23. Mendillo M, Storms in the ionosphere: patterns and processes for total electron content, *Reviews of Geophysics (USA)*, 44(2006) pp 1-47. RG4001.
24. Zhao B., Wan W, Liu L, Igarashi K., Nakamura M, Poxton L J, Su S-y, Li, G & Ren, Z, Anomalous enhancement of ionospheric electron content in the Asia-Australian region during a geo-magnetically quiet day, *J Geophysical Research (USA)*, 113(2008) pp 1-12.A11302.
25. Adekoya B J, Adebisi B O & Alausa I M, Ionospheric day to day morphology during the storm of 12 August 2000, *Sun and Geosphere (Balkan)*, 8 (2013), pp 41-49.
26. Prolss G W, Von Zhan U, Esro 4 gas analyzer results, 2. Direct measurements of changes in the neutral composition during an ionospheric storm, *J Geophysical Research (USA)*, 79 (1974) pp 2535-2539.
27. Prolss G W, Magnetic storm associated perturbations of the upper atmosphere: recent results obtained by satellite borne gas analyzers, *Reviews of Geophys (USA)* 18 (1980) pp183-202.
28. Prolss G W, Storm-induced changes in the thermospheric composition at middle latitudes, *planet space Sci(UK)*, 38(1987) pp 807-811.
29. Burns A G, Killen T L & Roble R G, A theoretical study of thermospheric composition perturbations during an impulsive geomagnetic storm, *J Geophysical Research(USA)*, 96(1991) pp14153-14167.
30. Fuller-Rowell T J, Codrescu M V & Moffett R J, Response of the thermosphere and ionosphere to geomagnetic storms, *J Geophysical Research (USA)*, 99(1994) pp 3893-4011.
31. Adewale A O, Oyeyemi E O, Adedoye A B & Adedokun, M B, Ionospheric effects of geomagnetic storms at Hobart comparisons with IRI model predictions, *Journal of Scientific Research and Development (Nigeria)*, 14(2013) pp 98-105.
32. Foster M & Jakowski N, Geomagnetic Storm effects on the topside ionosphere and plasmasphere; a compact tutorial and new results, *Surveys in Geophysics (Netherlands)*, 21(2000) pp 47-87.
33. Basu S, Basu S, Vallodare C E, Yeh H C, Su S Y, Mackenzie E, Sultan P J, Aarons J, Rich F J, Doherty P, Groves K M, & Bullett T W, Ionospheric effects of major magnetic storms during the international space weather period of September and October 1999: GPS Observations, VHF/UHF scintillations, and in-situ density structures at middle and equatorial latitudes, *J Geophysical Research (USA)*, 106 (2001) pp 30389-30413.
34. Lin C H, Richmond A D, Heelis R A, Bailey G J, Lu G, Liu, J Y, Yeh H C, & Su S Y, Theoretical study of the low and mid latitude ionospheric electron density enhancement during the October 2003 storm. Relative importance of the neutral wind and the electric field, *J Geophysical Research (USA)*, 110 (2005) pp 1-14.A12312.
35. Zhao B, Wan W, Liu L, Igarashi K, Yumoto K & Ning B, Ionospheric response to the geomagnetic storm on 13-17, April 2006 in the west pacific region, *J Atmos Terr Phys (UK)* 71(2009) pp 88-100.
36. Dessler A J, Hanson W B & Parker E N, Formation of the geomagnetic storm main-phase ring current, *J Geophysical Research (USA)*, 66(1961) pp 3631-3637.
37. Evans J V, F-region heating observed during the main phase of magnetic storms, *J Geophysical Research (USA)*, 75(1970) pp 4815-4823.

International Journal of Innovative Research in Science, Engineering and Technology

(An ISO 3297: 2007 Certified Organization)

Vol. 5, Issue 10, October 2016

38. Prolss G W, Radiation production and energy deposition on by ring current protons dissipated by the charge exchange mechanism, *Ann Geophys (Germany)* 29 (1973) pp 503-508.
39. Tinsley B A, Neutral storm precipitation a review, *J AtmosTerr Phys (UK)*, 43(1981) pp 617-632.
40. King K W, Reed K C, Olatunji E O, Legg A J, *J AtmosTerr Phys (UK)*, 29(1997) pp 1355-1363.
41. Adeniyi, J O, Magnetic storm effects on the morphology of the equatorial F2-layer, *J AtmosTerr Phys (UK)*, 48(1986) pp 695-702.
42. Tanaka T, Low-latitude ionospheric disturbances: Results for march 22, 1979, and their general characteristics, *Geophysical Research Letters (USA)*,13 (1986) pp 1399-1402.
43. Adbu M A, Major Phenomenon of the equatorial ionosphere thermosphere system under disturbed conditions, *J AtmosTerr Phys (UK)*, 59 (1997) pp1505-1519.
44. Mansilla G A, Ionospheric disturbances at the Crests of the equatorial anomaly during geomagnetic storms, *Geofisicainternacional (Mexico)*, 38 (1999) pp 279-284.
45. Chandra S &Stubbe P, Ion and neutral composition changes in the thermospheric region during magnetic storms, *Planet Space Sci (UK)*, 19(1971) pp 491-502.