

# **Influence of High Volume Fly Ash on Hybrid Fiber Reinforced Concrete**

P. Sindhu Priya<sup>1</sup>, Y. Vinod Kumar<sup>2</sup>

P.G. Student, Department of Civil Engineering, Gudlavalluru Engineering College, Gudlavalluru,  
Andhra Pradesh, India<sup>1</sup>

Assistant Professor, Department of Civil Engineering, Gudlavalluru Engineering College, Gudlavalluru,  
Andhra Pradesh, India<sup>2</sup>

**ABSTRACT:** Nominal concrete and high strength concrete with or without Fly Ash exhibit brittle behaviour. Substitution of Fly Ash to cement in concrete is a widely adopted construction practice underlain by the aim to reduce CO<sub>2</sub> emissions of cement production. Fly Ash is a by-product of the coal-fired power plants and is well accepted as a pozzolanic material that may be used as a mineral admixture in concrete. Researchers have identified that the addition of fibers to concrete increases the ductility and strength. While there is evidence of use of single type of fibers in concrete, the use of hybrid fibers in high volume Fly Ash concrete to enhance the strength and other properties appears to be lacking. Therefore, an experimental investigation has been undertaken to study the high performance high volume Fly Ash concrete reinforced with hybrid fibers: steel fibers and basalt fibers. Effect of replacing 40%, 50%, 60% cement with Fly Ash and addition of fibers by volume of concrete for M40 grade of concrete. These fibers have been used in different percentages and the cement in concrete is replaced by 50% class F Fly Ash. Steel fibers are added in the order of 0.5%, 0.75% & 1% and basalt fibers are added in the order of 0.5%, 0.75% and 1% by volume of concrete. Mix design was formulated and specimens were casted and tested for computing compressive strengths, split tensile strengths and flexural strengths at various periods from 7, 28 and 90 days and durability conditions also.

**KEYWORDS:** Basalt Fibers, cement, Fly Ash, Hybrid Fiber reinforced concrete, Hybrid Fibers, steel Fibers.

## **I. INTRODUCTION**

Concrete is a material composed of Cement, fine aggregate, Coarse aggregate and water. It is well known that manufacturing of one ton of Ordinary Portland Cement (OPC) absorbs 4GJ energy and produces about 0.75 to 1.0 ton of CO<sub>2</sub> to the atmosphere. In order to contribute to a reduction of use of cement worldwide, industry wastages like Fly Ash, ground granulated slag; silica fume, rice husk ash etc have been initiated by researchers to replace OPC in the concrete. There has been an increase in using High Volume Fly Ash Concrete (HVFAC) in recent years and a number of papers have been published. There are two ways that the Fly Ash can be used in cement and concrete. One way is by blending with cement clinker and gypsum in the manufacturing plant of ordinary Portland cement. Alternatively, at the construction site Fly Ash can be added to ordinary Portland cement. The ash that is disposed from the plant causes pollution. High Volume Fly Ash (HVFA) is generally defined as that with at least 50% of the Portland cement replaced with fly ash. It is necessary to use super plasticizer because of very low water content in High Volume Fly Ash concrete (HVFAC).

Fly Ash which is a finely divided amorphous aluminosilicate powder, reacts with the calcium hydroxide released by hydration of cement and produces various calcium-silicate hydrates (C-S-H) and calcium aluminium hydrates. In High Volume Fly Ash Concrete (HVFAC), increase in the quantity of cementitious C-S-H phase and calcium aluminium hydrates improves the long term strengths and reduces the permeability. Thus improves the durability properties.

# International Journal of Innovative Research in Science, Engineering and Technology

(A High Impact Factor, Monthly, Peer Reviewed Journal)

Visit: [www.ijirset.com](http://www.ijirset.com)

Vol. 8, Issue 5, May 2019

Fiber reinforced concrete (FRC) is concrete containing fibrous material which increases its structural integrity. It contains short discrete fibers that are uniformly distributed and randomly oriented. Fibers include steel fibers, glass fibers, synthetic fibers and natural fibers. Fibers are usually used in concrete to control plastic shrinkage cracking and drying shrinkage cracking. They also lower the permeability of concrete and thus reduce bleeding of water. Steel fiber (SF) is the most popular type of fiber used as concrete reinforcement. Initially, SFs are used to prevent/control plastic and drying shrinkage in concrete. The addition of Steel Fibers in concrete significantly increases its flexural toughness; energy absorption capacity, ductile behaviour prior to the ultimate failure, reduced cracking, and improved durability. Basalt fiber is a high performance non-metallic fiber made from basalt rock melted at high temperature. Basalt rock can also make basalt rock, chopped basalt fiber, basalt fabrics and continuous filament wire.

## II. EXPERIMENTAL DETAILS

In the present experimental program, the first step is selecting of raw materials. Number of conventional trails is prepared and the mix proportions for M40 grade is selected by changing different water Cement ratios. By replacing the cement with Fly Ash in the range of 40%, 50%, 60% and Hybrid Fibers (0.5, 0.75 and 1%) are added for concrete mix of cement replaced with Fly Ash as 50%. The experimental program was carried out on cubes, cylinders and beams. The details of the materials used for these specimens and testing procedure incorporated in the test program are presented in the subsequent sections.

### Materials

#### Cement

Cement is the main ingredient in manufacturing of concrete. Changing the Cement content will be greatly affected the characteristics of concrete. The Cement used in this project is Ordinary Portland Cement of 53 grade conforming to IS 12269 – 1987.

#### Fine Aggregate

The fine aggregates generally range from 0.075mm – 4.75mm. The fine aggregate used in the present experimental program was river sand. The Fine aggregate are selected as per IS-383 specifications.

#### Coarse Aggregate

Aggregate which are more than 4.75mm in size are generally considered as Coarse aggregate. 20mm is the maximum size of coarse aggregate used in this experimental work and 12 mm is the minimum size of the aggregate used. A good quality of Coarse aggregate is obtained from nearest crusher unit. The Coarse aggregate are selected as per IS-383 specifications.

#### High Volume Fly Ash

High Volume Fly Ash(HVFA) is generally defined as that with at least 40% of the Portland cement replaced with fly ash.

Table 1 Composition of cement and Fly ash

Oxides	Ordinary Portland Cement	Class-F Fly Ash
	Proportions (%)	Proportions (%)
Lime (CaO)	60-67	6
Silica (SiO <sub>2</sub> )	17-25	55
Alumina (Al <sub>2</sub> O <sub>3</sub> )	3-8	26
Iron oxide (Fe <sub>2</sub> O <sub>3</sub> )	0.5-6	7
Magnesium oxide (MgO)	0.1-3	2
Sulphur (SO <sub>3</sub> )	1-3	1-3
Sodium oxide	0.4	0.8
Potassium oxide	0.4	0.7
Loss of ignition	2	0.3

#### Super plasticizer

The Super plasticizer used was a Master Glenium SKY 8233 high range water reducing agent suitable for Fly Ash concrete.

# International Journal of Innovative Research in Science, Engineering and Technology

(A High Impact Factor, Monthly, Peer Reviewed Journal)

Visit: [www.ijirset.com](http://www.ijirset.com)

Vol. 8, Issue 5, May 2019

## Hybrid Fiber reinforced concrete

Hybrid fiber reinforced concrete is two or more fibers will be added to concrete by volume in hybrid form.

### Steel Fibers

Steel fiber reinforced concrete is a composite material that can be sprayed. It consists of hydraulic cements with steel fibers that are dispersed randomly and possess a rectangular cross-section. The flexural strength of fiber reinforced concrete is greater than the unreinforced concrete.

### Basalt Fibers

Basalt fiber is a continuous fiber made of melting basalt stone at 1450 to 1500 degrees through Platinum rhodium alloy bushing. It is a new environmental protection fiber which is known as the twenty-first Century 'volcano rock silk', it is also called golden fiber because its colour is golden brown. It is similar to fiberglass, having better physio mechanical properties than fiberglass, but being significantly cheaper than carbon fiber.

## III. EXPERIMENTAL INVESTIGATION AND AUTHENTICATION

In this experimental investigation cubes are casted of size 150X150X150mm for compressive strength, 300x150mm cylinders for splitting tensile strength, 500 x100 x100mm beams for flexural strength, after casting, test specimens were covered with plastic sheets and left in the casting room for 24 hours. They were de-moulded after 24 h and were put into a water-curing room until the time of the test.

Following material proportion and various dosage combination of admixture for 0.38 w/c ratio have been studied. For nominal mix of M40 grade of concrete (1:1.61:2.87)

- Cement – 430 (kg/m<sup>3</sup>)
- Fine aggregate – 692 (kg/m<sup>3</sup>)
- Coarse aggregate – 1245.58 (kg/m<sup>3</sup>)
- Water: W/c ratio is 0.38
- Super plasticizer – 0.62% by the weight of cement.
- Fly ash: Replacement of cement 40%, 50%, and 60% by weight of cement.
- Addition of Hybrid Fibers (Steel & Basalt) of 0.5%, 0.75%, 1% by the volume of concrete.

### Concrete Mixture Composition

The proportions of the control OPC concrete mixtures were 1:1.61:2.87. Table presents the composition of the concrete mixtures produced and tested: M1 mixture is corresponding control Portland cement concrete; M2- M7 are High Volume Fly Ash Concrete mixtures; M2 mixture is made with 40% Fly Ash replacement; M3 mixture is made with 50% Fly Ash replacement; M4 mixture is made with 60% Fly Ash replacement; M5 mixture is made with 50% Fly Ash replacement and addition of 0.5% of steel fibers and 0.5% of basalt fibers by volume of concrete; M6 mixture is made with 50% Fly Ash replacement and addition of 0.75% of steel fibers and 0.75% of basalt fibers by volume of concrete; M7 mixture is made with 50% Fly Ash replacement and addition of 1% of steel fibers and 1% of basalt fibers by volume of concrete.

Table 2 Concrete Mixture Composition

Mix	M1	M2	M3	M4	M5	M6	M7
Cement(kg/m <sup>3</sup> )	430	258	215	172	215	215	215
Fly Ash(kg/m <sup>3</sup> )	-	172	215	258	215	215	215
F.A(kg/m <sup>3</sup> )	692	692	692	692	692	692	692
C.A(kg/m <sup>3</sup> )	1245.58	1245.58	1245.58	1245.58	1245.58	1245.58	1245.58
W/C ratio	0.38	0.38	0.38	0.38	0.38	0.38	0.38
Superplasticizer (%)	0.62	0.62	0.62	0.62	0.62	0.62	0.62
Steel Fibers (%)	-	-	-	-	0.5	0.75	1
Basalt Fibers (%)	-	-	-	-	0.5	0.75	1

# International Journal of Innovative Research in Science, Engineering and Technology

(A High Impact Factor, Monthly, Peer Reviewed Journal)

Visit: [www.ijirset.com](http://www.ijirset.com)

Vol. 8, Issue 5, May 2019

## IV. RESULTS AND DISCUSSION

### Compressive Strength

Compressive strength of concrete mixtures of conventional, high volume Fly Ashconcrete and hybrid reinforced high volume Fly Ashconcrete was determined at the ages of 7, 28, 90 days. Results are given in Table 3 and shown in Fig. 1 and Fig. 2 At 28 days, control mixture M-1 (0% fly ash) achieved compressive strength of 49.43 MPa, whereas mixtures M-2 (40% fly ash), M-3 (50% fly ash), M-4 (60% fly ash) achieved compressive strength reduction of 50%, 55%, and 59% respectively, in comparison with the strength of the control mixture M-1 (0% fly ash). The results at 90 days indicated that there was continuous and significant improvement in strength beyond the age of 28 days. The increase in strength from 28 to 90 days was between 37% and 42%. The mixtures M-5 (50% Fly Ash and 0.5% of hybrid fibers), M-6 (50% Fly Ash and 0.75% of hybrid fibers), M-7 (50% Fly Ash and 1% of hybrid fibers) achieved compressive strength reduction of 42%, 35%, 37% respectively, in comparison with the strength of the control mixture M-1 (0% fly ash) and strength increased as compared to High volume Fly Ashconcrete mixture M-3 (50% fly ash). The increase in strength is, of course, due to the cement that continued to hydrate. The significant increase in strength of high-volume Fly Ashconcrete is due to pozzolanic reaction of fly ash.

Table 3 Compressive Strength

Mixture number	Compressive Strength (N/mm <sup>2</sup> )			% increase of strength from 28 days to 90 days
	7 Days	28 Days	90 Days	
M1	30.82	49.43	51.31	3.5
M2	17.3	25.12	39.87	37
M3	15.52	22.28	38.12	41.5
M4	14.60	20.46	35.11	41.7
M5(0.5% of hybrid fibers)	20.26	28.38	39.52	28.2
M6(0.75% of hybrid fibers)	26.20	32.27	46.92	31.3
M7(1% of hybrid fibers)	24.22	30.75	44.5	30

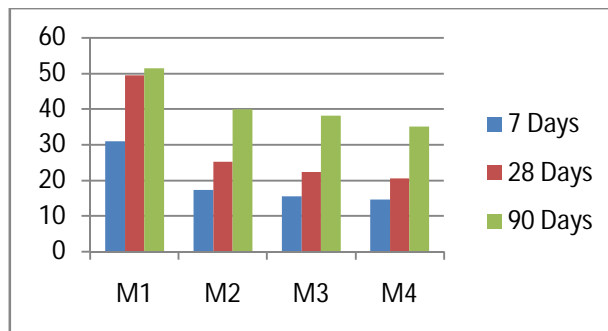


Figure 1 Compressive strength of High Volume Fly Ash Concrete

## International Journal of Innovative Research in Science, Engineering and Technology

(A High Impact Factor, Monthly, Peer Reviewed Journal)

Visit: [www.ijirset.com](http://www.ijirset.com)

Vol. 8, Issue 5, May 2019

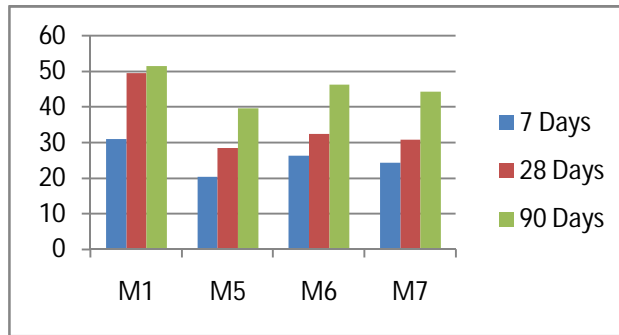


Figure 2 Compressive strength of Hybrid Fiber Reinforced high Volume Fly Ash Concrete

### Splitting Tensile Strength

Split tensile strength of concrete mixtures of conventional, high volume Fly Ash concrete and hybrid reinforced high volume Fly Ash concrete was determined at the ages of 7, 28, 90 days. Results are given in Table 4 and shown in Fig. 3 and Fig. 4. At 28 days, control mixture M-1 (0% fly ash) achieved Split tensile strength of 49.43 MPa, whereas mixtures M-2 (40% fly ash), M-3 (50% fly ash), M-4 (60% fly ash) achieved split tensile strength reduction of nearly 10% to 15% respectively, in comparison with the strength of the control mixture M-1 (0% fly ash). The results at 90 days indicated that there was continuous and significant improvement in strength beyond the age of 28 days. The increase in tensile strength from 28 to 90 days nearly 10%. Whereas mixtures M-5 (50% Fly Ash and 0.5% of hybrid fibers), M-6 (50% Fly Ash and 0.75% of hybrid fibers), M-7 (50% Fly Ash and 1% of hybrid fibers) achieved split tensile strength 5-10% more. At the 90 days of curing the split tensile strength is increased by nearly 80% as compared with conventional concrete and high volume Fly Ash concrete due to presence of fibers.

Table 4 Splitting Tensile Strength

Mixture number	Splitting Tensile Strength (N/mm <sup>2</sup> )			% increase of strength from 28 days to 90 days
	7 Days	28 Days	90 Days	
M1	2.56	4.75	5.2	9
M2	1.8	4.37	4.88	10.5
M3	1.6	4.12	4.62	11
M4	1.5	3.98	4.27	7
M5(0.5% of hybrid fibers)	2.31	4.76	8.73	46
M6(0.75% of hybrid fibers)	3.12	5.12	9.67	47
M7(1% of hybrid fibers)	2.96	4.91	9.14	46.3

# International Journal of Innovative Research in Science, Engineering and Technology

(A High Impact Factor, Monthly, Peer Reviewed Journal)

Visit: [www.ijirset.com](http://www.ijirset.com)

Vol. 8, Issue 5, May 2019

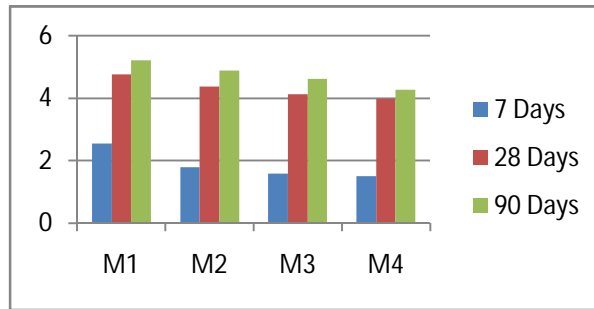


Figure 3 Split Tensile Strength of High volume Fly Ashconcrete

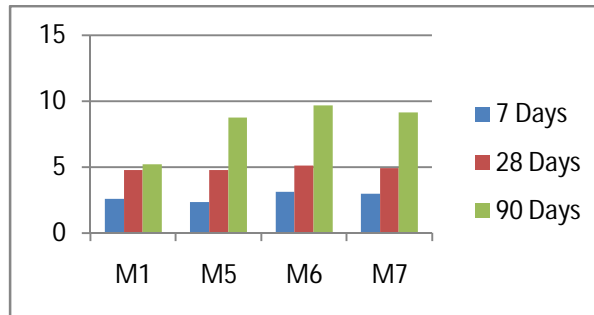


Figure 4 Split tensile strength of hybrid fiber high volume Fly Ashconcrete

## Flexural Strength

Flexural strength of concrete mixtures of conventional and high volume Fly Ashconcrete was determined at the ages of 7, 28, 90 days. Results are given in Table 5 and shown in Fig. 5 and Fig. 6 At 28 days, control mixture M-1 (0% fly ash) achieved flexural strength of 4.94 MPa, whereas mixtures M-2 (40% fly ash), M-3 (50% fly ash), M-4 (60% fly ash) achieved flexural strength reduction of nearly 15% to 20% respectively, in comparison with the strength of the control mixture M-1 (0% fly ash). The results at 90 days indicated that there was continuous and significant improvement in strength beyond the age of 28 days. The increase in flexural strength from 28 to 90 days nearly 20%. Whereas mixtures M-5 (50% Fly Ash and 0.5% of hybrid fibers), M-6 (50% Fly Ash and 0.75% of hybrid fibers), M-7 (50% Fly Ash and 1% of hybrid fibers) achieved flexural strength 15-20% more. At the 90 days of curing the flexural strength is increased by nearly 70% as compared with conventional concrete and high volume Fly Ashconcrete due to presence of fibers.

Table 5 Flexural Strength

Mixture number	Flexural Strength (N/mm <sup>2</sup> )			% increase of strength from 28 days to 90 days
	7 Days	28 Days	90 Days	
M1	2.79	4.94	5.7	14
M2	2.19	4.34	5.32	18
M3	2.14	4.14	5.14	20
M4	2.12	3.96	4.92	20
M5(0.5% of hybrid fibers)	2.49	4.72	8.96	50
M6(0.75% of hybrid fibers)	2.54	4.81	10.3	45
M7(1% of hybrid fibers)	2.52	4.78	9.15	50

# International Journal of Innovative Research in Science, Engineering and Technology

(A High Impact Factor, Monthly, Peer Reviewed Journal)

Visit: [www.ijirset.com](http://www.ijirset.com)

Vol. 8, Issue 5, May 2019

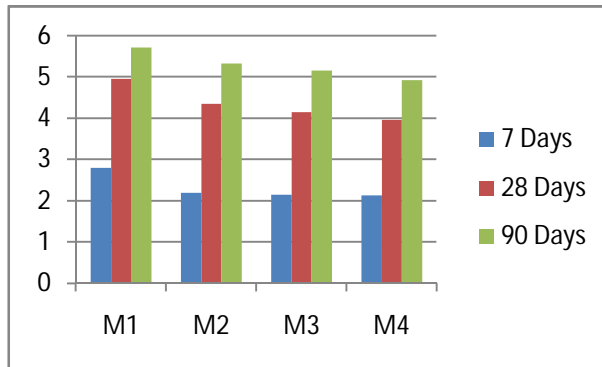


Figure 5 Flexural strength of high volume Fly Ash concrete

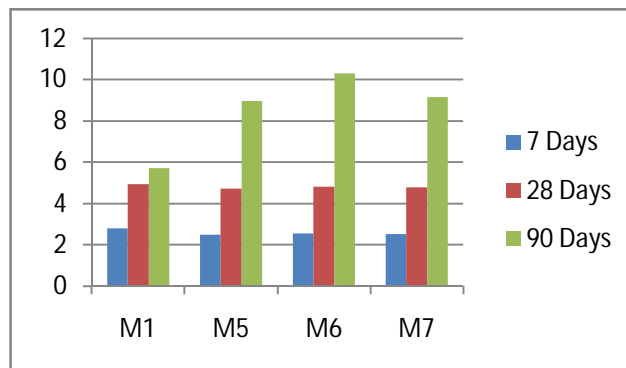


Figure 6 Flexural strength of hybrid fiber high volume Fly Ash concrete

## V. DURABILITY TESTS

### Durability of Concrete

Durability of concrete may be defined as the ability of concrete to resist weathering action, chemical attack, and abrasion while maintaining its desired engineering properties.

### CHEMICAL RESISTANCE TEST

#### Acid resistance –HCl and H<sub>2</sub>SO<sub>4</sub>

Acid attack test was conducted as per ASTM C267- 01(2012). For acid resistance, the cube specimens were immersed in 2% HCl solution by volume added to water and the pH observed in the solution was 3.10 at the initial stage. Similarly another set of cube specimens were immersed in 2% of H<sub>2</sub>SO<sub>4</sub> solution by volume added to water and the pH observed in the solution was 2.10 at the initial stage.

# International Journal of Innovative Research in Science, Engineering and Technology

(A High Impact Factor, Monthly, Peer Reviewed Journal)

Visit: [www.ijirset.com](http://www.ijirset.com)

Vol. 8, Issue 5, May 2019

## Percentage Weight loss results

Table 6 Weight reduction in acids

Mixture Number	HCl (2%)		weight loss in %	H <sub>2</sub> SO <sub>4</sub> (2%)		weight loss in %
	Average weight of cube before immersion in Acid (Kg)	Average weight of cube after immersion in Acid (Kg)		Average weight of cube before immersion in Acid	Average weight of cube after immersion in Acid	
M5	8.98	8.65	3.7	8.88	8.51	4.2
M6	8.95	8.69	3.0	8.99	8.68	3.6
M7	8.79	8.48	3.6	8.75	8.41	3.9

## Percentage Strength loss results

Table 7 Strength reduction in acids

Mixture Number	HCl (2%)		weight loss in %	H <sub>2</sub> SO <sub>4</sub> (2%)		strength loss in %
	Average strength of cube immersion in water (Kg)	Average strength of cube after immersion in Acid (Kg)		Average strength of cube immersion in water	Average strength of cube after immersion in Acid	
M5	39.52	33.6	15	39.52	31.69	20
M6	46.92	42.52	10.5	46.92	39.34	17
M7	44.5	39.11	12.4	44.5	36.25	20

## VI. CONCLUSION

The following conclusions are obtained from this experimental investigation.

- The replacement of cement with three percentages (40%, 50%, and 60%) of Fly Ash content reduced the compressive strength, Split tensile Strength, and Flexural strength of concrete at 28 days of curing but there was a continuous and significant improvement of strength properties beyond 28 days.
- The setting time of Fly Ash concrete increased in conjunction with the addition of Fly Ash content.
- Compressive strength of partial replacement of cement with 50% Fly Ash reinforced with 0.75% steel fiber and 0.75% basalt fiber in hybrid form was found to have been increased by 20% in 90 days compared to partial replacement of cement with 50% Fly Ash without adding fibers.



## International Journal of Innovative Research in Science, Engineering and Technology

(A High Impact Factor, Monthly, Peer Reviewed Journal)

Visit: [www.ijirset.com](http://www.ijirset.com)

Vol. 8, Issue 5, May 2019

- Indirect tensile strength of partial replacement of cement with 50% Fly Ash reinforced with 0.75% steel fiber and 0.75% basalt fiber in hybrid form was found to have been increased by 50% in 90 days compared to partial replacement of cement with 50% Fly Ash without adding fibers.
- Flexural strength of partial replacement of cement with 50% Fly Ash reinforced with 0.75% steel fiber and 0.75% basalt fiber in hybrid form was found to have been increased by 50% in 28 days compared to partial replacement of cement with 50% Fly Ash without adding fibers.
- In the durability studies the weight losses are obtained for 90 days of curing in acids HCl is nearly 3-4% and in H<sub>2</sub>SO<sub>4</sub> is nearly 3.5-5%.
- In the durability studies the strength losses are obtained for 90 days of curing in acids, HCl is nearly 10-15% and in H<sub>2</sub>SO<sub>4</sub> is nearly 15-20%.

### REFERENCES

- [1] Xiao-Yong Wang, Ki-Bong Park, "Analysis of compressive strength development of concrete containing high volume fly ash". Construction and Building Materials 98 810–819, 2015.
- [2] P. Nath, P. Sarker. (2011) "Effect of Fly Ash on the Durability Properties of High Strength Concrete". Procedia Engineering 14 P.no 1149–1156, 2011.
- [3] Chung-Ho Huang, Shu-Ken Lin, Chao-Shun Chang, How-Ji Chen. (2013) "Mix proportions and mechanical properties of concrete containing very high-volume of Class F fly ash". Construction and Building Materials 46 P.no 71–78, 2013.
- [4] Rafat Siddique, "Performance characteristics of high-volume Class F Fly Ash concrete". Cement and Concrete Research 34 487–493, 2004.
- [5] Carrette G, Bilodeau A, Chevrier RL, and Malhotra VM, "Mechanical properties of concrete incorporating high volumes of fly ash" from sources in the U.S. ACI Material Journal, 90, 535-544, 1993.
- [6] R.H. Mohankar, M.D. Pidurkar, P.V. Thakre, S.S. Pakhare. "Hybrid Fibre Reinforced Concrete". International Journal of Science, Engineering and Technology Research (IJSETR), Volume 5, Issue 1, 2016.
- [7] Rooban Chakravarthy Srikanth Venkatesan, "Review on Hybrid Fiber Reinforced High Performance High Volume Fly Ash Concrete". International Journal of Structural and Civil Engineering Research Vol. 5, No. 1, 2016.
- [8] Wasim Abbass, M. Iqbal Khan, Shehab Mourad, "Evaluation of mechanical properties of steel fiber reinforced concrete with different strengths of concrete". Construction and Building Materials 168 556–569, 2018.
- [9] Wael Alnahhal, Omar Aljidda. "Flexural behaviour of basalt fiber reinforced concrete beams with recycled concrete coarse aggregates". Construction and Building Materials 169 165–178, 2018.
- [10] IS: 12269-1987: Specifications of 53 grade OPC.
- [11] IS 383-1970: Specifications For Coarse Aggregate And Fine Aggregates From Natural Sources Of Concrete.
- [12] IS: 2386-1963: Methods of Testing Aggregates for concrete.
- [13] IS: 456-2000: Design Specifications of Plain & Reinforced Concrete.
- [14] IS: 10262- 2009: Recommended guidelines for Concrete Mix Design.
- [15] IS 516-1959: Methods of Test for strength of Concrete.