

Organized by

Department of ECE, Adhiyamaan College of Engineering, Hosur, Tamilnadu, India

Automation Based Industrial Plant Using SCADA

Mr.Siva Kumar M¹, Merlin mary P², Pooja S³, Pretheeka C⁴, Preyanka C⁵

Assistant Professor, Department of ECE, Adhiyamaan College of Engineering, Hosur, Tamilnadu, India ¹,

UG Students, Department of ECE, Adhiyamaan College of Engineering, Hosur, Tamilnadu, India ^{2,3,4,5}

ABSTRACT: At present, with the approach of control framework, SCADA has assumed a significant job in the field of computerization. SCADA framework methods for controlling remotely found gadgets in the mechanical procedure. This paper presents different sorts of engineering of such control frameworks, alongside a review of the security concerns relating of them.

KEYWORDS: Real time Data Acquisition, Remote Thermal unit, sensors.

I.INTRODUCTION

SCADA (Supervisory Control and Data Acquisition) is characterized under the class of mechanical control system.[1] It is innovation that offers clients the power to send control mandates to and gather the data from at least one far off offices. SCADA dispenses with the need of human nearness at the remote offices where the standard activity takes place.[2].In the course of the most recent couple of years, the usefulness receptiveness and the significant advancement has been seen regarding the adaptability and the functionality.[3][4] They have been considered as choices for improvement of confounded and requesting control framework like the ones that are a piece of material science experiment.[5]

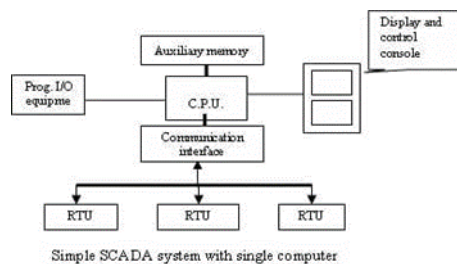


Fig1. Simple SCADA framework with single PC

II.METHODOLOGY

It is efficient and cost diminishing framework subsequently dispensing with the requirement for individual consideration regarding visit each side for examination, information obtaining or make modifications.SCADA framework performed both the activity, for example, information obtaining and supervisory control.

Organized by

Department of ECE, Adhyyamaan College of Engineering, Hosur, Tamilnadu, India

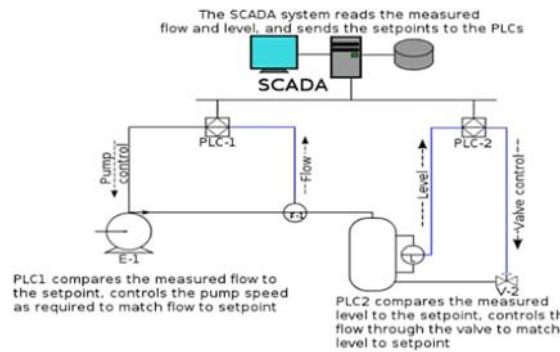


Fig2. Configuration of a typical SCADA

III. SCADA

A SCADA (Supervisory control and information securing) has been utilized since there have been control framework. Information Acquisition is the first SCADA framework was finished utilizing the boards of meter, light and strip outlines recorders. It was done by the administrators who physically worked the different control Knobs. Such framework is as yet being utilized in processing plants, plants and force producing units. SCADA framework is a modern control framework. They are utilized to assemble data and exercise control from the remote areas. The incorporated information obtainment is as huge as control. SCADA framework are utilized to screen remote unit. These framework finds the application in the conveyance procedure, for example, water supply and squander water application, oil and gas pipelines, electrical utility transmission, and rail and other open transportation frameworks

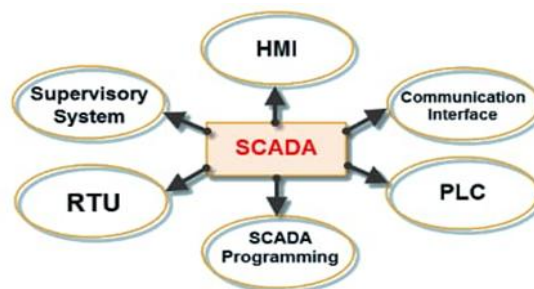


Fig3. SCADA Architecture

IV. EXISTING METHOD

SCADA applications are involved two components, to be specific, the procedure/apparatus framework that should be controlled and an interconnection of gadgets which structure an interface with the procedure viable by means of sensors and control yields. This interconnection that permits the client to gauge and screen express components of the said procedure, is the SCADA framework.

Organized by

Department of ECE, Adhiyamaan College of Engineering, Hosur, Tamilnadu, India

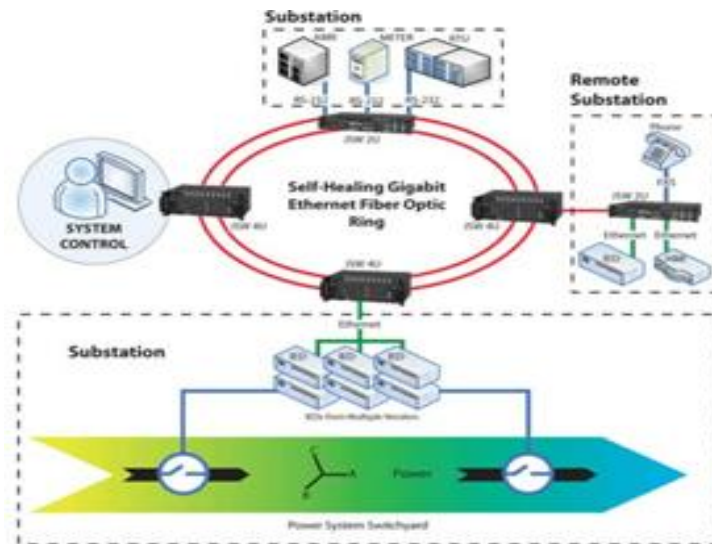


Fig4. Self-mending Ethernet

SCADA frameworks perform solidified control for different procedure sources of info and yields by incorporating Human Machine Interface (HMI) programming and information transmission frameworks with information procurement framework. The exchange of information between administrator terminals, for example, remote Terminal Units (RTUs) and programmable Logic Controllers (PLCs), and the focal host PC is remembered for SCADA frameworks. A SCADA framework gathers important information and moves the information back to a focal site and afterward it tells the home station about the occasion and it executes the necessary investigation and control, and afterward it shows the information in a legitimate and efficient way utilizing diagrams or content. It empowers the administrator to control an entire procedure continuously. Open Switched Network (PSN) was utilized for control purposes in regular SCADA frameworks. At Present the framework gave by corporate Local Area Network (LAN) or wide Area Network (WAN) is utilized to control an assortment of frameworks.

A.HARDWARE

This typically a contains a Master Terminal Unit (MTU) situated at a control place, correspondence gear, for example, situated at a control community and correspondence hardware, for example, link, satellite and radio. The geologically scattered field destinations establishing of a RTU or a PLC that controls actuators as well as sensors.



Fig 5. PIN Structure

Organized by

Department of ECE, Adhiyamaan College of Engineering, Hosur, Tamilnadu, India

B.SOFTWARE

Programming of the product is completed to teach the framework about the parameters that should be viewed as their passable extents and the reaction to be endless supply of an issue.



Fig 6. System Setup

V.COMPONENTS OF SCADA SYSTEM

Parts of the SCADA framework comprises of the accompanying subsystems. Remote Terminal units(RTUs): RTUs are little and mechanized electronic gadgets constrained by a microcontroller. They are conveyed in the field of the particular destinations and areas and associated with the sensors. RTUs are focuses, where informations are assembled from the sensors and the directions are conveyed to the control transfers. A Telemetry framework: PLCs and RTUs are associated with the different parts right now. This framework is finished utilizing a telemetry framework.



Fig 7. Remote Terminal Units

SCADA ace unit: This are huge PCs that obtain information and control the framework. Ace units resemble focal processor that direct the oversaw framework based on sensor units. Human machine interface(HMI): The HMI gadget resembles interface between the customers and they can get data from them.

VI.WORKING OF A SCADA SYSTEM

The SCADA working guideline incorporates the four capacities:

- control
- Data obtaining
- Data introduction
- Networked information interchanges

There are different kind of sensor which may incorporate the weight, temperature and Hall impact. They are set at the different areas in the mechanical establishments. where never-ending observing is vital for documenting the ongoing situation for SCADA. The temperature sensor are interfaced to the 8051 microcontrollers with assistance of a 8 channel ADC gadget. Where the temperature sensor gathers the information and send them to the microcontroller. The heaters(lamp) are associated with transfer contacts comparing to their sensors which are constrained by the hand-off driver IC. The framework is interfaced to the PC utilizing RS-232 link having GUI for intelligent activities by the administrator. At whatever point temperature of a sensor increments from the set purpose of the GUI, the microcontroller sends an order to the relating transfer. The hand-off is utilized to turn ON and OFF the heater(a light burden) to keep up the set temperature. Subsequently, as far as possible and low farthest point highlights are accessible for creating an AV alert on the occasion of any irregular circumstance. At the front end, "DAQ SYSTEM" programming is stacked to the PC which takes sensor esteems and afterward it show those qualities before the board and furthermore utilized them in a database. The product has the arrangement for setting the sensor parameters, for example, set point, low confine and high utmost on the PC screen. Consequently in the enormous scope mechanical plant control numerous procedures with more exactness and better wellbeing utilizing SCADA.

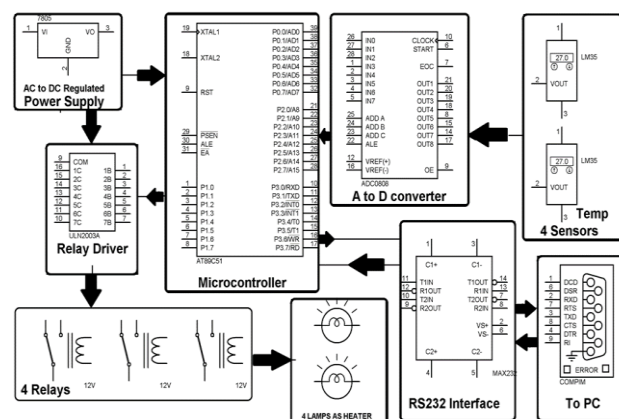


Fig 8. Block Diagram

As the use of SCADA includes into the two component, for example, the procedure or framework that should be checked and controlled. What's more, the other second components includes the gadgets you will use to perform checking and controlling capacities. Favorable circumstances of the SCADA framework in remote modern plant are nonstop checking of procedure, mechanization and security, Remote control and activity, continuous control.

VILARCHITECTURE OF SCADA

The SCADA System is a brought together framework which screen and controls the whole territory. It is absolutely programming bundles that is situated on the highest point of the equipment. A supervisory framework accumulates the information on the procedure and afterward it sends the order to the procedure. The SCADA is a remote terminal unit and it is otherwise called RTU. Most control activities are consequently performed by RTUs. The RTUs comprises of the programmable rationale converter which can be set to explicit necessities. For instance, in the warm force plant the water stream can be set to explicit worth or it very well may be changed by the prerequisites.

Organized by

Department of ECE, Adhityamaan College of Engineering, Hosur, Tamilnadu, India

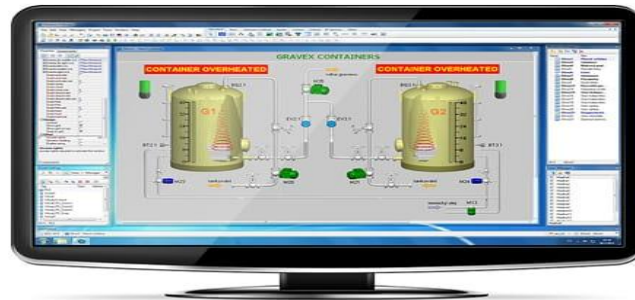


Fig9. Human Machine Interface

The SCADA framework permits the administrator to change the set point for the stream and empowers the caution conditions in the event of loss of stream and high temperature. This conditions is shown and recorded. The SCADA framework screen the general exhibitions of the circle. It is a brought together framework to speak with both wire and remote innovation to customer gadgets. The SCADA framework controls can run totally .

A. EQUIPMENT ARCHITECTURE

Generally SCADA framework can be arranged into the two sections:

- Clint layer
- Data server layer

The Clint layer which obliges the man machine collaboration. The information server layer which handles the large portion of the procedure. The SCADA station alludes to the server and it is made to a solitary PC. The information servers used to speak with the gadget in the field through procedure controllers like PLCs or RTUs. The PLCs are associated with the information servers either legitimately or by means of system. The SCADA framework uses a WAN and LAN systems.

B. PROGRAMMING ARCHITECTURE

Numerous servers is accustomed to performing multiple tasks and ongoing database. The server is answerable for information assembling and taking care of. The SCADA framework comprises of a product program to give inclining and symptomatic information. It is utilized to oversee data, for example, booked upkeep methodology, coordinations data and point by point schematics. It implies the administrator can see a schematic portrayal of the plant being controlled. For instance: alert checking, computations, logging, those are commonly associated with the server.

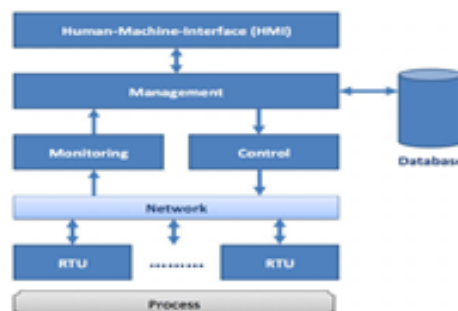


Fig10. Gravex Containers

Organized by

Department of ECE, Adhiyamaan College of Engineering, Hosur, Tamilnadu, India

VIII. SCADA USED IN REMOTE INDUSTRIAL PLANT

SCADA Installation commonly incorporates the PC workstations, programmable rationale controllers (PLCs), and other instrumentation for framework data sources and yields. Not at all like an appropriated control system (DCS), SCADA control capacities might be constrained. The input circle goes through the PLC, while administrators screen results and for instance change the set focuses.

Distributed correspondence among the controllers might be deficient. The cutting edge programmable robotization controller (PAC) delivers these worries to contend with a DCS as a control worldview. SCADA incorporates devices for process plan and improvement. The capacity to productively execute numerous occurrences of a framework. SCADA execution regularly incorporates pre-coordinated information students of history and an entryway network to total information and impart results, examination, and so on.

IX.RESULT AND DISCUSSION

The SCADA circuit has been structured and afterward the information from various simple burdens has been rapaciously and carefully showed on PC. The product is utilized for the arrangement for setting the parameters, for example, set point, low farthest point, high utmost and alert sign with show of warmer ON/OFF at the manager terminal.

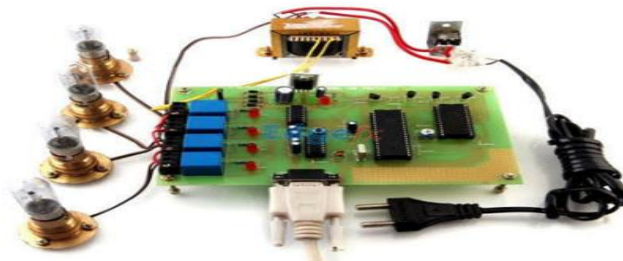


Fig11. Overall setup

This undertaking can be taken care of with the eight sensors however just four has been utilized here. The undertaking utilizes light instead of warmer.

X. CONCLUSION

Right now, minimal effort SCADA framework with the computerized information and yield. The simple information and yield for industry robotization has been created. This undertaking is utilized in any mechanical for computerization and this is accustomed to imparting over the standard MOD transport convention. The equipment can be incorporated in to any standard MOD Bus framework. A few burdens have been checked on PC just as cell phone progressively.

International Journal of Innovative Research in Science, Engineering and Technology
An ISO 3297: 2007 Certified Organization Volume 9, Special Issue 1, March 2020
8th National Conference on Frontiers in Communication and Signal Processing Systems (NCFCSPS '20)
18th-19th March 2020

Organized by

Department of ECE, Adhyyamaan College of Engineering, Hosur, Tamilnadu, India



Fig12. System arrangement

REFERENCES

- [1] Vara manthan kantilal "ZIGBEE based remote checking and controlling of computerization framework utilizing PLC and SCADA" , global diary of cutting edge inquire about in electrical, hardware and instrumentation building volume.3,Issue 1 , January 2014.
- [2] National instruments(1996): information obtaining (DAQ) essentials, National Instruments Application Note 007, 1996.
- [3] Hildick - Smith , Andrew , "Security for basic infrastructure SCADA Systems," (SANS Reading Room , GSEC Practical Assignment adaptation 1.4c, choices 1,February 2005).
- [4] K.A Akpado "Structure Modeling and Simulation of a Microcontroller based Temperature control in a Ventilation framework" International Journal of cutting edge Research in Electrical, Electronics and Instrumentation Engineering Volume. 2, Issue 7, July 2013.
- [5] Ramon Martinez - RODRIGUEZ - Osorio, Miguel Calvo-Ramon, Miguel A. Fernandez-Otero, Luis Cuellar Navarete, "Brilliant control System fr LEDs Traffic-Lights dependent on PLC", procedures of the sixth WSEAS International Conference on power frameworks, Lisbon, Portugal, September 22-24, 2006.