

Skin Disease Recognition Method Based on Image Color and Texture Features

M. Kaviarasan¹, P.Mahendiran², S.P.Narendran³, R.Naresh⁴, Mr. M. Ashok Kumar⁵

UG Students, Department of ECE, Adhiyamaan College of Engineering, Hosur, Tamilnadu, India^{1,2,3,4}

Assistant Professor, Department of ECE, Adhiyamaan College of Engineering, Hosur, Tamilnadu, India⁵

ABSTRACT: In the present modernized world, Skin ailment is one the most noteworthy regular infection among individuals. Skin malady is uncommon development of skin cells on the outside of the body. A large portion of the skin ailments are reparable at beginning times. So an early and quick recognition of skin malady can spare the patient's life. With the new innovation, the location of skin malady is conceivable at beginning stage. The past technique for conclusion skin malady recognition is Biopsy strategy. It is finished by expelling skin cells and that example goes to different research center testing. It is excruciating and tedious procedure. We have proposed skin malady programmed discovery framework utilizing open CV for the identification of skin infection. It is progressively worthwhile to patients. The dermatoscopy picture of skin infection is caught, picture upgrade and commotion expelling process through different pre-handling technique. At that point Threshold technique is utilized to section the picture. A couple of features of picture must be expelled using GLCM strategy. These features are given as the commitment to course classifier, which is used for portrayal reason. It isolates the given picture of the skin whether it is influenced by illness or not.

KEYWORDS: Skin Disease, Skin Cells, GLCM Methodology, Biopsy.

I. INTRODUCTION

Skin illness is normal and pervasive sort of ailment over the world. Over 3.5 million instances of skin sickness like Melanoma, Squamous Cell and Basal Cell Carcinoma. Carcinoma are analyzed each year. This is higher than the consolidated tallies of bosom sickness, lung illness and colon infections. It is with various assortment of illness, discovery of the skin sickness is the most confident procedure to recuperation in the previous phase of the infection. The location of skin sickness yields a multiyear endurance pace of 94%. Notwithstanding, this endurance pace of the infection tumbles down definitely as the malady advances and arrives at the following stages. Multiyear endurance rates go to a small 15% on account of Melanoma, when the malady is distinguished in the last stage. As skin injuries look very same to one another, it is extremely hard to decide if a sore is amiable stage or dangerous. Broad investigation should be performed to recognize the classification of the injury. Generally, a picture utilizing an exceptional gadget, known as a dermatoscope, is taken to consider the injury intently. Sadly, dermatoscopes are costly and not generally accessible with dermatologists.

II. EXPERIMENTAL SETUP

Right now picture handling surface examination of skin malady has been done. Utilizing traditional camera the pictures are recorded and afterward created. It requires heaps of procedure for building up a picture. Now and then it might wound up with poor photograph catches or pictures taken accidentally. It additionally prompts also aching procedure.

III. PROPOSED SYSTEM

Right now video breaking down live procedure of a skin infection is dissected. Utilizing Integrated Webcam live video is recorded. It offers high pixel range and records excellent video tests. As it comprised of implicit channels in it, obscure in pictures and undesirable clamor can be expelled viably. Here Edge Detection strategy is forced here

Gaussian channels is utilized, generally used to obscure the pictures or to lessen noise. In this framework, we can change the adjust values we can discover the part of malady. The individuals can take claim medication from this procedure.

IV. WORKING OPERATION

A. SEGMENTATION PROCESS

Division portions an image into unquestionable territories containing each pixel with near qualities. It is useful for investigating picture, translation and the areas ought to unequivocally identify with the delineated items or highlights of premium. It is the starting advance from low-level picture handling move a grayscale or shading picture into at least one another pictures to elevated level picture depiction as far as highlights, articles, and scenes. The picture can be dissected and it tends to be relies on dependability of division, yet an ongoing procedure of a picture is commonly a difficult issue. Division strategies depends on relevant or non-logical. The connections between highlights in a picture and gathering pixels together based on some worldwide quality, for example dim level or shading. Relevant strategies are misuse these connections. For example bunch together pixels with comparative dark shading levels and close spatial areas.

Image segmentation is a technique to determine the shape and size of the border. It isolates the article from its experience dependent on various highlights removed from the picture.



Figure 1: Skin disease

In the wake of expelling the commotion and hair from the injury region, the sore needs to part from the skin, and in this way the investigation for determination is led simply utilizing the fundamental zone. There are a great deal of division strategies feasible for this investigation.

B. THRESHOLDING

This technique decides the limit and afterward the pixels are separated into bunches dependent on that foundation. It incorporates bi-level and multi thresholding. The technique incorporates Histogram and Adaptive procedure.

C. COLOUR BASED SEGMENTATION

Calculations Segmentation depends on shading separation. It incorporate standard part change or round arrange change.

D. DISCONTINUITY-BASED SEGMENTATION

Discovery of sore edges utilizing dynamic shapes or spiral pursuit strategies or zero intersection of Laplacian of Gaussian (LoG). It covers Active forms, Radial inquiry and LoG 3.2.4 Region-based division, it is a technique for parting the picture into littler pixels at that point consolidating sub pictures which are adjoining and comparative in some sense. It incorporates Statistical area consolidating, multi scale district developing, and morphological flooding. It depends on the specialized picture, for example, Split and union Statistical Region Merging Multi-Scale Morphological flooding

E. IMAGE ENHANCEMENT

Image Enhancement is the one of the procedure used to recognize the changing computerized picture. The outcomes are progressively reasonable for show picture examination. For instance, you can evacuate commotion, hone or light up of computerized pictures, making easy to recognize key component. Techniques:

- Filtering with morphological activity.
- Histogram balance.
- Noise expulsion.
- Linear differentiate modification Median sifting etc.

F. EDGE DETECTION TECHNIQUE

Edge discovery incorporates an assortment of numerical strategies that target recognizing focuses in an advanced picture at which the picture splendor changes pointedly or, all the more officially, has discontinuities. It works appropriately in splendid zone. Channel is utilized to obscure picture and expel commotion. It is utilized for picture division and information extraction procedure, for example, picture preparing, PC vision. Ringworm is recognized best utilizing edge location.

G. GRAY SCALE

Grayscale is a scope of monochromatic conceals from dark to white shading. It contains just shades of dark shading and no shading. Grayscale values are spoken to as paired qualities as 0's and 1's. Grayscale pictures are made out of pixels spoke to by different bits of data, ordinarily extend from 2 to 8 bits or more. Grayscale measures the power of the light reflected from a zone (spot) of plane surface and characterizes every pixel (picture component) as a byte. It is used to recognize the each pixels image. This grayscale image having many shades of gray in between pixels. It focus on the strongest amount of light (black or white) or brightness of the images. Grayscale image is mainly on brightness not colour focusing. Pixles are comprised of red, green and blue dots.

H. RGB MATRIX CLASSIFICATION

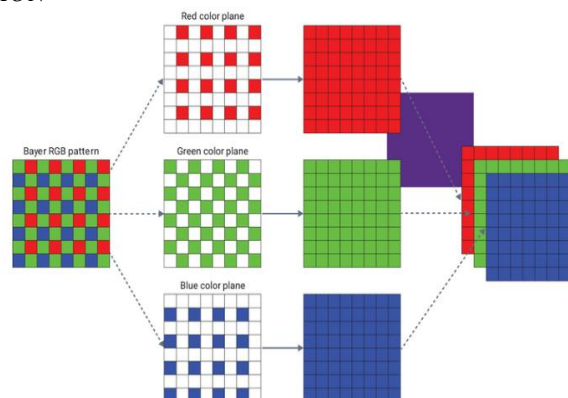


Figure 2: RGB Matrix

I. INTRODUCTION TO THE RGB MODEL

Right now, comprehension of hues is a need. The way to having the option to contemplate and talk about hues is a conventional system for quantizing their properties. A concealing model is a calculated logical model depicting the way in which tones can be addressed as tuples of numbers, normally as three or four characteristics or concealing. The principle motivation behind the RGB shading model is for the detecting, portrayal, and show of pictures in electronic frameworks, for example, TVs and PCs, however it has additionally been utilized in ordinary photography. This post will present one the most mainstream models: the RGB shading model. There are two kinds of shading models: added substance and subtractive. Added substance shading models utilize light to show shading, while subtractive shading

Organized by

Department of ECE, Adhiyamaan College of Engineering, Hosur, Tamilnadu, India

models useprinting inks. The most widely recognized shading models that visual originators work with are the CMYK model for printing and the RGB model for PC show.

J.RGB COLOR MODEL

At the point when the force of every one of the three parts is 0%, the shading is dark. At the point when every one of the three are at 100% power the shading is white as the above figure represents. Whenever each of the three parts are equivalent, the subsequent shading will be dim, the dimness of which will fall somewhere close to high contrast contingent upon the power esteem. Notwithstanding the three essential shades of the model, the realistic above outlines three other critical hues: the auxiliary hues, hues shaped when two of the three segments are at 100% force and the third part is missing totally. The three optional hues in the RGB model are yellow, made by consolidating red and green, fuchsia, made by joining blue and red, and cyan, the blend of blue and green. Every optional shading is the supplement of an essential shading, explicitly the essential shading that is missing from itself. For yellow, maroon, and cyan the relating essential hues are blue, green, and red, individually. At the point when the three segments don't have a similar worth, the shading will have a tone that falls nearer to either red, green, or blue contingent upon which part has the biggest worth. Survey profile is known as a shading space.

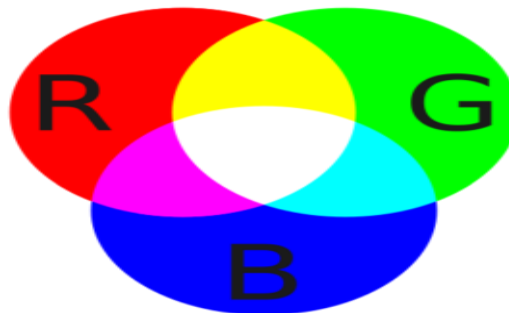


Figure 3: RGB color Spaces

K.HSV COLOUR SPACE:

Shade, Saturation, and Value (HSV) is a shading model that is frequently utilized instead of the RGB shading model in designs and paint programs. In utilizing this shading model, a shading is determined at that point white or dark is added to effortlessly make shading alterations. HSV may likewise be called HSB (short for tint, immersion and splendor). Not at all like RGB and CMYK, which utilize essential hues, HSV is nearer to how people see shading. It has three segments: shade, immersion, and worth. This shading space portrays hues (tone or tint) as far as their shade (immersion or measure of dark) and their splendor esteem. Scientifically, the picture is a constant capacity (congruity) with the power of light in the field of two measurements. So as to be handled with a computerized PC, a picture must be given numerically discrete qualities. Portrayal of a persistent capacity into discrete qualities is called picture digitization. A computerized picture can be spoken to by a two dimensional grid $f(x, y)$ comprising of M sections and N lines, where convergences among segments and columns are called pixels (picture component) or the littlest component of a picture.

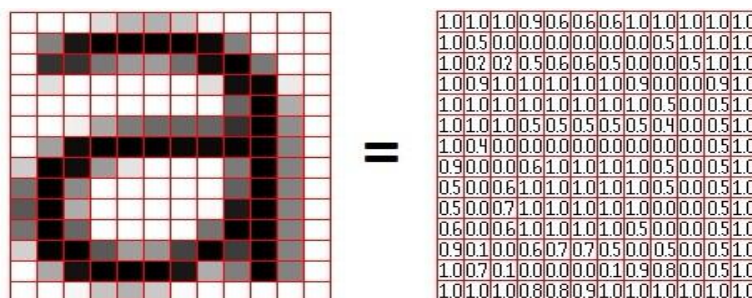


Figure 4: Picture Element

Organized by

Department of ECE, Adhiyamaan College of Engineering, Hosur, Tamilnadu, India

V. SIMULATION OUTPUT

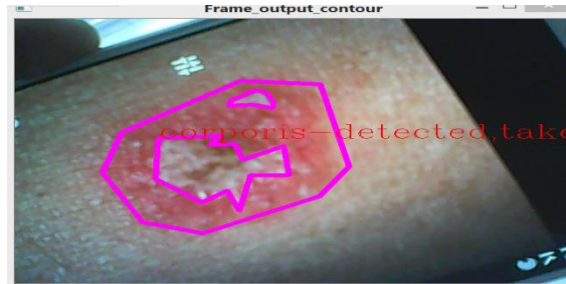


Figure 5: corpora detected

The skin is affected area is recognise by the artificial intelligence using RGB colour coding and grayscale coding. The image is scanned by the size and saturation of the colour. This is the output of the simulation and the medicine are instruct to take for the disease cure. This is not accurate output but we can recognise the disease which is affected. By updating the calibrating values we can identify many diseases and increase the accuracy rate of the diseases

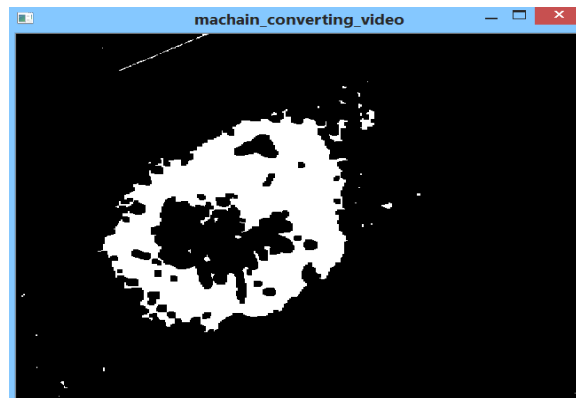


Figure 6: Machine Image

VI. CONCLUSION

A Computer based skin disease detection system is proposed. The diagnosing methodology uses Digital Image Processing Techniques for the classification of infected skin. The unique features of the enhance images were extracted using HSV-histogram and SURF. Based on the features, the images were classified as infected skin and normal skin. This methodology has got good accuracy also. By varying the Image processing techniques and Classifiers, the precision can be improved for this system. Despite having some difficulty, these techniques are very helpful in medical science. The data we have collected will be helpful in medical field to see the clear image of the infected part in the skin as well as that part which are not visible by human eyes.

REFERENCES

- [1] T.H. Lau and A.A. Jumaily, "Automatically Early Detection of Skin Cancer." 978-0-7695-3879-2/09 IEEE
- [2] Huiyu Zhou, Xuelong Lu, Gerald Schaefer, M. Emre Celebi, Paul Miller, "Mean shift based gradient vector flow for image segmentation." Computer Vision and Image Understanding, Volume 117, Issue 9, September 2013, Page 1004-1016 ELSERVIER
- [3] Martins LDO, Junior GB, Silva AC, Paiva ACD, Gattass M, "Detection of Masses in Digital Mammograms using K-means and Support Vector Machine." Electronic Letters on Computer Vision and Image Analysis 8(2):39-50.
- [4] A. Bhardwaj and J.S. Bhatia, "An Image Segmentation Method for Early Detection and Analysis of Melanoma." 2279-0853, p-ISSN: 2279-0861. Volume 13.IOSR 2013.
- [5] S. Wold, K. Esbensen, P. Geladi, "Principal component analysis." Chemometrics and intelligent laboratory systems 2(1):37-52.

International Journal of Innovative Research in Science, Engineering and Technology

An ISO 3297: 2007 Certified Organization

Volume 9, Special Issue 1, March 2020

8th National Conference on Frontiers in Communication and Signal Processing Systems (NCFCSPS '20)

18th-19th March 2020

Organized by

Department of ECE, Adhiyamaan College of Engineering, Hosur, Tamilnadu, India

- [6] Rafael C. Gonzalez, Richard E. Woods, Steven L. Eddins, "Digital Image Processing Using MATLAB", Third Edition Tata McGraw Hill Pvt. Ltd., 2011
- [7] Andre Esteva, Brett Krupel and Sebastian Thrun, Deep Networks for Early Stage Skin Disease and Skin disease Classification, Stanford University, 2017.
- [8] Dermatology Education. (n.d.) Homepage. [online] Available at: <http://www.dermnet.com>
- [9] P. R. Hill, H. Bhaskar, M. E. Al-Mualla and D. R. Bull, Improved Illumination Invariant Homomorphic Filtering using the Dual Tree Complex Wavelet Transform, 2016 IEEE International Conference on Acoustics, Speech and Signal Processing (ICASSP), Shanghai, 2016, pp. 1214-1218