



e-ISSN: 2319-8753 | p-ISSN: 2347-6710

IJRSET

International Journal of Innovative Research in
SCIENCE | ENGINEERING | TECHNOLOGY



INTERNATIONAL JOURNAL OF INNOVATIVE RESEARCH

IN SCIENCE | ENGINEERING | TECHNOLOGY

Volume 12, Issue 5, May 2023

ISSN INTERNATIONAL
STANDARD
SERIAL
NUMBER
INDIA

Impact Factor: 8.423

9940 572 462

6381 907 438

ijrset@gmail.com

www.ijrset.com

Social Distance Detection

Avadhut Rananavare¹, Shivam Bagul², Samruddhi Gaikwad³, Khushi Chaher⁴, Mrs.P.P.Bastawade⁵

Diploma Student, Department of Computer Engineering, AISSMS Polytechnic, Pune, Maharashtra, India¹

Associate Professor, Department of Computer Engineering, AISSMS Polytechnic, Pune, Maharashtra, India²

ABSTRACT: A camera-based distance detector is a system that estimates the distance between a camera and objects within an environment using computer vision techniques. This project aims to develop a camera-based distance detector system that can accurately estimate distances in real-time.

The system is designed using a monocular camera, which captures images of the environment, and image processing algorithms, which analyze the images to estimate distances. The system is calibrated using known distances and is tested under different environmental conditions and with different types of objects to ensure accuracy and reliability.

The project involves different phases, including designing, prototyping, testing, and optimization. Testing is a crucial part of the development process and involves evaluating the system's accuracy, reliability, and performance under different conditions, we use python language for this project, with OpenCV.

The camera-based distance detector system has a wide range of practical applications in different industries, including robotics, autonomous vehicles, security systems, medical imaging, and agriculture. The future scope of camera-based distance detectors is promising, with potential applications in a wide range of industries and environments, and advancements in technology and new sensing modalities will lead to improved performance, accuracy, and efficiency.

KEYWORDS: Distance Detection, Computer Vision, OpenCV, Python.

I. INTRODUCTION

A camera-based distance detector project involves developing a system that uses cameras to estimate the distance between the camera and objects within a certain environment. This type of project can have a wide range of applications, from robotics to autonomous vehicles.

The basic idea behind a camera-based distance detector is to use cameras to capture images or video of a particular area, and then use computer vision algorithms to analyze these images and estimate the distance between the camera and objects within the environment. Once the distance is estimated, the system can use this information to make decisions, such as adjusting the speed of a vehicle or robot to maintain a safe distance.

To develop a camera-based distance detector project, you will need to have knowledge of computer vision algorithms and techniques, as well as programming skills in languages such as Python or C++. You will also need access to cameras and hardware components to build the system.

The project can be customized to suit specific applications, and can involve the use of multiple cameras for better coverage and accuracy. Overall, a camera-based distance detector project can be a challenging and rewarding project that can have practical applications in a range of fields.

II. RELATED WORK

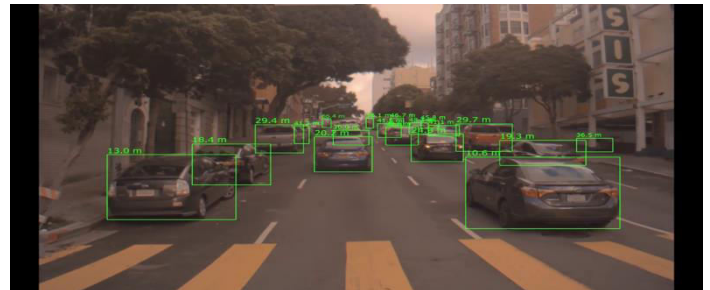
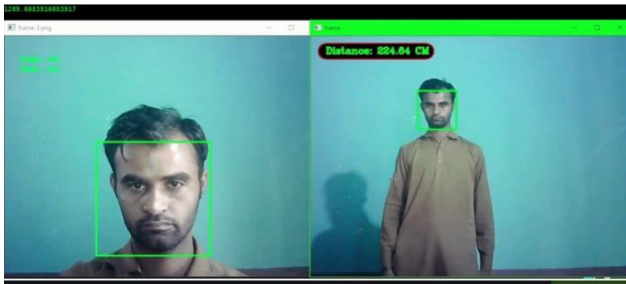
1. "Real-time distance estimation of pedestrians using monocular camera" by J. C. Kim, S. Y. Kim, and J. H. Lee. This study proposes a real-time distance estimation method for pedestrians using a monocular camera.
2. "An accurate distance estimation system for robotic applications based on single camera vision" by S. Vijayarangan and S. Saravanakumar. This research proposes an accurate distance estimation system based on single-camera vision for robotic applications.
3. "Distance measurement using single camera by detecting vanishing point" by G. V. Jagadeesh Kumar, S. Giridharan, and M. L. Valarmathi. This study proposes a distance measurement method using a single camera by detecting the vanishing point of a line.

4. "Real-time object distance estimation using a single camera" by J. Park, J. Kim, and H. Kim. This study proposes a real-time object distance estimation method using a single camera based on feature matching and image rectification.
5. "Camera-Based Distance Measurement for Robot Vision" by K. H. Choo and Y. H. Kim. This study proposes a camera-based distance measurement method for robot vision using the stereo vision technique.

III. METHODOLOGY

1. System Design: This step involves the selection of the camera and other components such as the processor and software algorithms. The design must also include the calibration process for the camera, which is essential for accurate distance estimation.
2. Data Collection: The camera is used to capture images of the environment, including objects at various distances. These images are used to develop and train the algorithms used in the distance estimation process.
3. Algorithm Development: The algorithm used in the distance estimation process is critical to the accuracy and efficiency of the system. Several computer vision techniques can be used, such as feature extraction, stereo vision, or monocular vision, to estimate distances.
4. Calibration: The camera must be calibrated to ensure accurate distance estimation. This step involves establishing a relationship between the camera's image and the actual distance to an object.
5. Testing and Evaluation: The system is tested and evaluated under different environmental conditions and with different types of objects to ensure accuracy and reliability.
6. Optimization: Once the system has been tested and evaluated, it can be optimized to improve its performance and efficiency

IV. EXPERIMENTAL RESULTS



V. CONCLUSION

In conclusion, a camera-based distance detector project is a useful system that can accurately estimate the distance between a camera and objects within an environment. The system has a wide range of practical applications in different industries, including robotics, autonomous vehicles, security systems, medical imaging, and agriculture.

The project development process involves different phases, including designing, prototyping, testing, and optimization. Testing is an essential part of the development process and involves evaluating the accuracy, reliability, and performance of the system under various conditions.

To achieve accurate distance estimation, the system requires calibration, and it should be tested under different environmental conditions and with different types of objects. Real-time testing and comparison testing are also crucial to evaluate the system's ability to track moving objects and its performance against industry standards or other similar systems.

Overall, a camera-based distance detector project is a useful system that can help make informed decisions in real-time and improve efficiency in different industries. With proper design, development, and testing, the system can achieve high accuracy, reliability, and performance, making it a valuable asset for different applications.



|| Volume 12, Issue 5, May 2023 ||

| DOI:10.15680/IJIRSET.2023.1205018 |

REFERENCES

- [1] "Real-Time Object Detection and Distance Estimation Using Monocular Camera for Autonomous Navigation of Mobile Robots" by Y. A. Ghani, M. R. Ahmad, and R. Hamid.
- [2] "An accurate distance estimation system for robotic applications based on single camera vision" by S. Vijayarangan and S. Saravanakumar.
- [3] "Distance measurement using single camera by detecting vanishing point" by G. V. Jagadeesh Kumar, S. Giridharan, and M. L. Valarmathi.
- [4] "Real-time distance estimation of pedestrians using monocular camera" by J. C. Kim, S. Y. Kim, and J. H. Lee.
- [5] "Real-time object distance estimation using a single camera" by J. Park, J. Kim, and H. Kim.
- [6] "A Real-Time Camera-Based System for Distance Measurement and Control" by T. H. Shon and S. J. Lee.
- [7] "Distance estimation using monocular vision for autonomous vehicles" by R. Garg, S. Arora, and S. R. Dubey.
- [8] "Real-time distance measurement using a single camera and active lighting" by S. Lee, H. Lee, and I. Kweon.
- [9] "Camera-Based Distance Measurement for Robot Vision" by K. H. Choo and Y. H. Kim.



INNO SPACE
SJIF Scientific Journal Impact Factor
Impact Factor: 8.423



ISSN INTERNATIONAL
STANDARD
SERIAL
NUMBER
INDIA



INTERNATIONAL JOURNAL OF INNOVATIVE RESEARCH

IN SCIENCE | ENGINEERING | TECHNOLOGY

 **9940 572 462**  **6381 907 438**  **ijirset@gmail.com**



www.ijirset.com

Scan to save the contact details