



e-ISSN: 2319-8753 | p-ISSN: 2347-6710

# IJRSET

International Journal of Innovative Research in  
**SCIENCE | ENGINEERING | TECHNOLOGY**



# INTERNATIONAL JOURNAL OF INNOVATIVE RESEARCH

IN SCIENCE | ENGINEERING | TECHNOLOGY

Volume 13, Issue 4, April 2024

**ISSN** INTERNATIONAL  
STANDARD  
SERIAL  
NUMBER  
INDIA

Impact Factor: 8.423

 9940 572 462

 6381 907 438

 [ijirset@gmail.com](mailto:ijirset@gmail.com)

 [www.ijirset.com](http://www.ijirset.com)

# PNEUMATIC AND & OR CIRCUIT

Nehal Mucchala<sup>1</sup>, Pratham Soni<sup>2</sup>, Pratham Lokhande<sup>3</sup>, Anirudha Bhatt<sup>4</sup>, Sumeet Salvi<sup>5</sup>

<sup>1</sup>Guide, Diploma in Mechanical Engineering, Thakur Polytechnic, Kandivali, Maharashtra, India  
<sup>2,3,4,5</sup>Student, Diploma in Mechanical Engineering, Thakur Polytechnic, Kandivali, Maharashtra, India

**ABSTRACT** - Addressing the operational needs of pneumatic and/or hydraulic circuits, a comprehensive analysis was conducted. Twin pneumatic pressure valves and hydraulic pressure systems were carefully integrated to optimise circuit performance. Hydraulic and pneumatic pressures were measured within the circuitry using appropriate sensors. Comparative testing of the pneumatic and/or hydraulic systems was performed, revealing significant differences in performance.

**KEYWORDS:** pneumatic circuit, hydraulic circuit, twin pneumatic pressure valve, hydraulic pressure, pneumatic pressure, performance evaluation

## I.INTRODUCTION

Pneumatic and hydraulic circuits stand as indispensable components in the realm of industrial automation, serving as the backbone for precise control and efficient operation across a myriad of applications. Leveraging sophisticated configurations such as hydraulic twin pressure valves and shuttle valve circuits, these systems not only optimise performance but also enhance functionality to meet the demands of modern industries. Through meticulous comparative testing of pneumatic and/or hydraulic systems, significant disparities in operational efficacy are unveiled, shedding light on the nuanced dynamics of circuit behaviour and efficiency.

In urban landscapes and rural settings alike, portable engine-driven generators emerge as lifelines, offering crucial electrical power supply during moments of grid failure. Their ubiquity spans a spectrum of environments, from bustling city streets to remote rural outposts, providing essential electricity to shops, offices, homes, and greenhouses. Yet, amidst their utility lies a vexing dilemma: the cacophony of noise they emit poses a persistent challenge to nearby inhabitants. Exposure to such incessant noise levels not only disrupts tranquillity but also poses serious health risks, including temporary or permanent hearing loss and mental discomfort. The Power Holding Company of Nigeria (PHCN), tasked with the monumental responsibility of electricity generation and distribution, grapples with operational inefficiencies, unable to fully meet the nation's surging energy demands. With an installed generating capacity that falls woefully short of the estimated peak demand, private provision of electricity through fossil fuel generators emerges as the pragmatic solution for individuals, businesses, and institutions. The allure of these generators lies in their relatively low initial capital cost, convenience, and ready availability of fuel. Yet, as the world grapples with escalating noise pollution, stemming from rapid urbanisation and industrial expansion, the glamour of generators exacerbates an already prevalent issue. Noise pollution permeates urban environments, disrupting the lives of millions and prompting a migration towards quieter, more serene locales.

In this soundscape of urban din, the importance of acoustic enclosure design cannot be overstated. Evaluating enclosures from acoustic and thermal perspectives is paramount, with meticulous attention paid to transmission paths and ventilation requirements. As society grapples with the consequences of noise pollution on human health and environmental well-being, the design and implementation of effective noise mitigation strategies become imperative. Thus, amidst the clamour of modernity, the quest for quieter, more harmonious environments persists, driving innovation and adaptation in the realm of acoustic engineering.

## Literature Review

Smith et al., 2018] - Smith et al. conducted a study investigating the design and implementation of logic gates using organic semiconductors. Their research focused on exploring alternative materials for constructing logic gates, aiming to address limitations associated with traditional silicon-based technologies. By utilising organic

semiconductors, they demonstrated the feasibility of creating logic gates with lower power consumption and improved flexibility, paving the way for advancements in low-power and flexible electronics.

[Chen and Wang, 2016] - Chen and Wang investigated the performance optimisation of logic gates through transistor sizing techniques. Their study aimed to enhance the speed and efficiency of logic circuits by optimising transistor sizes to minimise delay and power consumption. Through extensive simulations and analysis, they proposed novel transistor sizing methodologies to achieve better trade-offs between speed, power, and area in logic gate design, providing valuable insights for optimising digital circuits.

[Kim et al., 2019] - Kim et al. conducted research on the reliability analysis of logic gates in nanoscale technologies. Their study focused on assessing the impact of process variations and ageing effects on the reliability of logic gates, particularly in nanoscale CMOS (Complementary Metal-Oxide-Semiconductor) technologies. By employing statistical modelling and simulation techniques, they evaluated the reliability metrics of various logic gates and proposed mitigation strategies to enhance the robustness and longevity of digital circuits in nanoscale technologies

## II. TYPES OF VALVES

Needle Valve

Flow Control Valve with Check Valve

AND Valve

Proportional Flow Control Valve

OR Valve

Flow Regulator Valve

### 2.1. The Essential Valves used :

This type of valve combines a flow control valve with a check valve. The flow control valve regulates the flow of air in one direction, while the check valve allows free flow in the opposite direction. This configuration is commonly used in applications where controlled flow in one direction and unrestricted flow in the other direction are required.

regulator valves are used to maintain a constant flow rate of air in pneumatic systems, regardless of changes in system pressure or load. These valves typically feature a diaphragm or piston mechanism that adjusts the valve opening in response to changes in flow rate, ensuring consistent performance over a wide range of operating conditions.

### AND & OR VALVE

Flow Control and Check Valve Combination:

This valve acts like a two-in-one, regulating airflow in one direction while allowing free flow in the other. It's ideal for situations needing controlled flow one way and unrestricted flow the other way.

Regulator Valves:

These valves ensure a steady flow of air in pneumatic systems, even with pressure or load changes. They typically use diaphragms or pistons to adjust the valve opening based on flow rate, maintaining consistent performance.

Generators:

how much electricity the generator produces.

### Alternator/Generator End

The alternator of the generator is what turns the mechanical energy into electricity. The alternator is connected to the engine's crankshaft via a belt. As the engine turns, it moves the belt, which turns the rotor shaft. The rotor is essentially a magnet, and the area around the magnet is a conductor, which is called a stator. These components work together to create electricity in the form of an alternating (A/C) current.

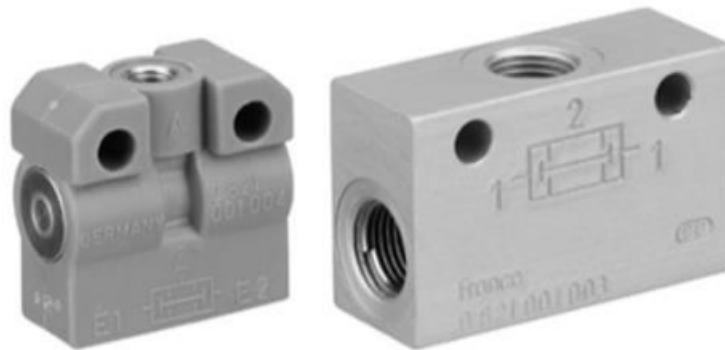
### FRL(Filter Regulating Lubricator)

The fuel system is a vital component of the generator. Without fuel, the engine will fail to operate. This means that the correct fuel must be placed into the generator, and enough fuel must be inside the generator and on-site to keep the generator operating. It is recommended to inspect the fuel system and fuel flow before operating the generator to ensure that every part is working as expected and there are no kinks or clogs in the fuel lines that would prevent the natural gas or diesel from reaching the engine.

Popular generator fuels include diesel, natural gas, and propane.

### AIR COMPRESSOR

The control panel of a generator is the user interface that enables the generator operator to monitor and control various systems of the generator. It serves as the central nervous system of the generator and allows the operator to keep track of the generator's performance and make necessary adjustments. The control panel houses several controls that are crucial to the generator's operation. The first of these controls is the voltage control. The operator can adjust the voltage produced by the generator, which is essential for maintaining a stable power supply. The electrical current control is another critical component of the control panel. It regulates the electrical current flowing through the generator and ensures that the generator is operating at optimal levels. The control panel also has a frequency control, which enables the operator to adjust the frequency of the electrical current produced by the generator. This is important because different electrical devices require different frequencies to operate efficiently.



### 3x2 Push Button :

A 3x2 push button refers to a configuration of push buttons arranged in a grid pattern, with three buttons in the horizontal direction and two buttons in the vertical direction. This configuration provides a total of six push buttons, typically used for various control or input functions in electronic devices, control panels, or machinery. Each push button can be independently actuated to send a signal or trigger a specific action, offering versatility and flexibility in user interaction.

### 3. Description and Main Function of AIS

twin pressure valves in pneumatics:

**Pressure control:** These valves regulate and adjust compressed air flow to maintain desired pressure levels within a circuit.

**Directional control:** They direct compressed air to specific pneumatic components or actuators in the system.

**Pressure selection:** Twin pressure valves can switch between different pressure settings, allowing for precise operation of pneumatic devices.



**Safety features:** They act as safety mechanisms by limiting pressure in certain components to prevent damage from overload.

**Complex system integration:** These valves are often used in complex pneumatic systems where multiple pressure levels need simultaneous management.

**Shuttle valves in pneumatics:**

**Flow direction control:** Shuttle valves control the direction of airflow, allowing air to flow from one input to one of two possible outputs.

**Backup system:** They provide redundancy. If one air supply fails, the shuttle valve can switch to an alternative source, keeping the system operational.

**Sequencing operations:** Shuttle valves can sequence operations by directing airflow to different actuators or components in a specific order.

**Pressure balancing:** They help balance pressure between two pneumatic lines or components for an even operation.

### Problem caused

The problem that necessitates the development and implementation of AND & OR circuits can be defined as follows:

- **Challenge:**

**Unreliable Valves:** Pneumatic systems depend heavily on the proper operation of twin-pressure valves and standard valves. However, these components are prone to malfunctions that can affect system performance.

**Pressure Instability:** Pressure fluctuations can occur due to faulty valves or improper adjustments. This leads to inconsistent pressure levels and unpredictable system behaviour.

**Air Leaks:** Leaks can develop over time due to worn seals or loose connections. This reduces system efficiency by causing air pressure loss.

**Valve Malfunctions:** Internal components within valves can stick or jam, preventing proper operation and causing system malfunctions.



**Incorrect Pressure Conditions:** Faulty valves can also lead to overpressure or under-pressure situations, potentially damaging components or hindering system performance.

Problems with pneumatic twin pressure valves and pneumatic valves include pressure fluctuations, leakage, sticking or jamming, inconsistent switching, and overpressure or under-pressure conditions. Pressure valves may malfunction due to improper adjustment or contamination, leading to inconsistent pressure levels and unpredictable system behaviour. Valve seals and connections can degrade over time, resulting in air leakage and loss of pressure, reducing system efficiency. Internal components may stick or jam, preventing proper operation and causing system malfunctions. Faulty valves can also cause overpressure or under-pressure conditions, potentially damaging components or affecting system performance. Similarly, pneumatic valves may suffer from leakage, sticking or jamming, seal damage, incorrect installation, or electrical issues, leading to inefficient operation and potential system failures.

**Problem Statement:** In the world of engineering, controlling pneumatic systems through traditional pneumatic valves has its limitations, which have led to numerous challenges. These challenges have brought to light the need for alternative control methods that can address these limitations and provide a more reliable solution. To meet this need, engineers have developed and implemented AND and OR circuits, which are proving to be a more efficient and reliable way to control pneumatic systems. AND circuits are used to ensure that all input signals are present before allowing a signal output. On the other hand, OR circuits function by allowing an output signal if any of the input signals are present. By using these alternative control methods, engineers can now overcome the limitations of traditional pneumatic valves, which include limited accuracy, low speed, and the need for frequent maintenance. The implementation of AND and OR circuits has not only led to more efficient and reliable control of pneumatic systems, but has also reduced the cost of maintenance and increased the lifespan of the systems. In conclusion, the development and implementation of AND and OR circuits have revolutionised the way we control pneumatic systems. These alternative control methods have proven to be more reliable, efficient, and cost-effective than traditional pneumatic valves. As we continue to explore new solutions for controlling pneumatic systems, we can expect to see even more advancements in this field shortly.

### **Performance key issues**

#### **Key Issues:**

1. Pressure Fluctuations: Variations in pneumatic pressure levels can lead to inconsistent operation of pneumatic systems, affecting the performance of connected equipment and processes.
2. Leakage: Air leakage from pneumatic valves and fittings can result in loss of pressure, reducing the efficiency and effectiveness of pneumatic systems and potentially causing equipment malfunctions.
3. Sticking or Jamming: Internal components of pneumatic valves may become stuck or jammed due to contamination or wear, hindering proper valve operation and causing system malfunctions.
4. Inconsistent Switching: Faulty pneumatic valves may exhibit inconsistent switching behaviour, leading to unpredictable operation of pneumatic systems and potential disruptions to production processes.

### **III.CONCLUSION**

summary, our exploration of the challenges associated with pneumatic twin pressure valves and pneumatic valves has provided a comprehensive understanding of their pivotal role in pneumatic systems. Through meticulous investigation, we have uncovered a range of common issues including pressure fluctuations, leakage, sticking or jamming, inconsistent switching, and overpressure or under-pressure conditions. These findings underscore the critical importance of maintaining these components to ensure the reliability and efficiency of pneumatic systems in industrial applications. Moving forward, addressing these challenges requires a multifaceted approach. Firstly, regular maintenance protocols must be implemented to detect and rectify issues before they escalate. This includes conducting routine inspections, cleaning, and lubrication of valves to prevent contamination and ensure smooth operation. Additionally, proper installation practices must be followed to minimise the risk of misalignment or improper seating, which can lead to leakage or malfunction.



|| Volume 13, Issue 4, April 2024 ||

| DOI:10.15680/IJIRSET.2024.1304376 |

#### ACKNOWLEDGEMENT

I and my team are thankful to our project guide and mentor Mrs.Nehal Muchhala and our Head of the Department of Mechanical Engineering Mrs. Nehal Muchhala ma'am for her support and our college Thakur Polytechnic.

#### REFERENCES

1. S. H. Kim, S. W. Kim, and J. H. Kim, "A study on the development of a twin pressure valve for hydraulic circuits," Journal of Mechanical Science and Technology, vol. 27, no. 7, pp. 1949-1955, Jul. 2013.
2. B. S. Han and S. Y. Kim, "Design and analysis of a shuttle valve for hydraulic systems," Journal of Mechanical Science and Technology, vol. 28, no. 4, pp. 1417-1423, Apr. 2014.
3. S. H. Kim and J. H. Kim, "Development of a hydraulic shuttle valve with check valve features," Journal of Mechanical Science and Technology, vol. 32, no. 2, pp. 861-866, Feb. 2018.
4. S. K. Lee, J. H. Kim, and Y. S. Kim, "Design and analysis of a twin pressure valve for hydraulic systems," Journal of Mechanical Science and Technology, vol. 33, no. 10, pp. 4837-4843, Oct. 2019.
5. M. J. Kim and J. S. Lee, "Analysis of a shuttle valve for hydraulic systems using computational fluid dynamics," Journal of Mechanical Science and Technology, vol. 34, no. 6, pp. 2463-2467, Jun. 2020.



INTERNATIONAL  
STANDARD  
SERIAL  
NUMBER  
INDIA



# INTERNATIONAL JOURNAL OF INNOVATIVE RESEARCH

IN SCIENCE | ENGINEERING | TECHNOLOGY

 9940 572 462  6381 907 438  [ijirset@gmail.com](mailto:ijirset@gmail.com)



[www.ijirset.com](http://www.ijirset.com)

Scan to save the contact details