



e-ISSN: 2319-8753 | p-ISSN: 2347-6710

# IJRSET

International Journal of Innovative Research in  
**SCIENCE | ENGINEERING | TECHNOLOGY**

# INTERNATIONAL JOURNAL OF INNOVATIVE RESEARCH

IN SCIENCE | ENGINEERING | TECHNOLOGY

Volume 13, Issue 5, May 2024

**ISSN** INTERNATIONAL  
STANDARD  
SERIAL  
NUMBER  
INDIA

Impact Factor: 8.423

9940 572 462

6381 907 438

[ijirset@gmail.com](mailto:ijirset@gmail.com)

[www.ijirset.com](http://www.ijirset.com)

# Freshia Event Management System

Ranjitha T<sup>1</sup>, Sakshi S Doddamani<sup>2</sup>, Shivani Mathad<sup>3</sup>, Vinutha V Chavan<sup>4</sup>, Mr.Rameshkumar H.K<sup>5</sup>

U.G. Student, Department of Computer Science and Engineering, Sri Taralabalu Jagadguru Institute of Technology,  
Ranebennur, Karnataka, India<sup>1 2 3 4</sup>

Assistant Professor, Department of Computer Science and Engineering, Sri Taralabalu Jagadguru Institute of  
Technology, Ranebennur, Karnataka, India<sup>5</sup>

**ABSTRACT:** The Event Management System (EMS) is a comprehensive software solution designed to streamline the organization and management of events. This system facilitates the efficient display and management of events, while also securely storing client details. The EMS offers a user-friendly interface for event planners to create, edit, and manage event listings. Additionally, the system incorporates robust client management features, allowing for the secure storage and retrieval of client data, including personal details, preferences. The EMS aims to enhance the overall event planning experience by providing a centralized platform that integrates client relationship management, and data security, ultimately contributing to increased productivity.

**KEYWORDS:** Event Management System (EMS), centralized platform

## I. INTRODUCTION

The introduction to the event management system (EMS) encapsulates the essence of a transformative solution poised to redefine the landscape of event planning and execution. As events serve as pivotal touchpoints for businesses, organizations, and individuals, the need for efficient management has become increasingly pronounced in today's dynamic world. By amalgamating state-of-the-art technologies such as Java, HTML, CSS, JavaScript, Eclipse IDE, MySQL Workbench, and Tomcat Server, the EMS emerges as a beacon of innovation, offering a robust framework to navigate the complexities of event management seamlessly.

In an era characterized by relentless pace and fierce competition, the traditional methods of event planning, marked by manual processes and fragmented communication channels, fall short in meeting the demands of modern stakeholders. The EMS seeks to bridge this gap by harnessing the power of technology to enhance productivity, foster collaboration, and maximize overall effectiveness. At its core, the system represents a paradigm shift, where the convergence of cutting-edge software and intuitive design principles converges to empower users with unparalleled capabilities.

In essence, the introduction serves as a clarion call to embrace innovation and reimagine the possibilities within the realm of event management. By embracing the EMS, stakeholders embark on a journey towards streamlined processes, enhanced communication, and informed decision-making, ultimately culminating in the delivery of exceptional experiences that resonate with attendees and leave a lasting impression. As the curtain rises on this new era of event management, the introduction lays the foundation for a transformative journey fueled by technology, collaboration, and relentless pursuit of excellence.

## II. RELATED WORK

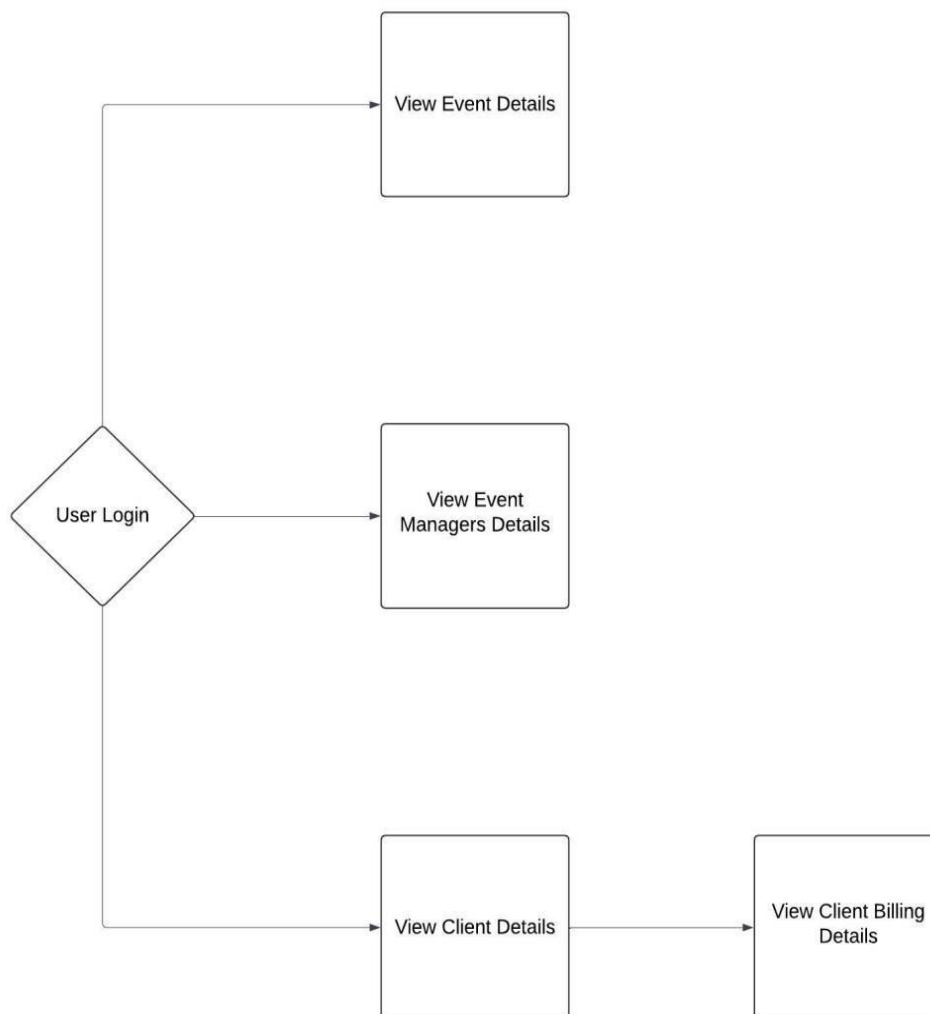
This project, named "EVENT MANAGEMENT SYSTEM" basically deals with implementing and managing the events through various software technologies available. It consists of various modules dealing with managing customer and employee information, managing events information, managing services, e-card creation and Event management website for status check

The proposed project aims to develop a College Event Organizer, an online platform for colleges to efficiently schedule and manage both technical and non-technical events. The system allows students to organize an event by registering their event in the website and upon approval by the Principal of the Institution, hence creating a channel to communicate directly instead of many tedious manual paper-processes

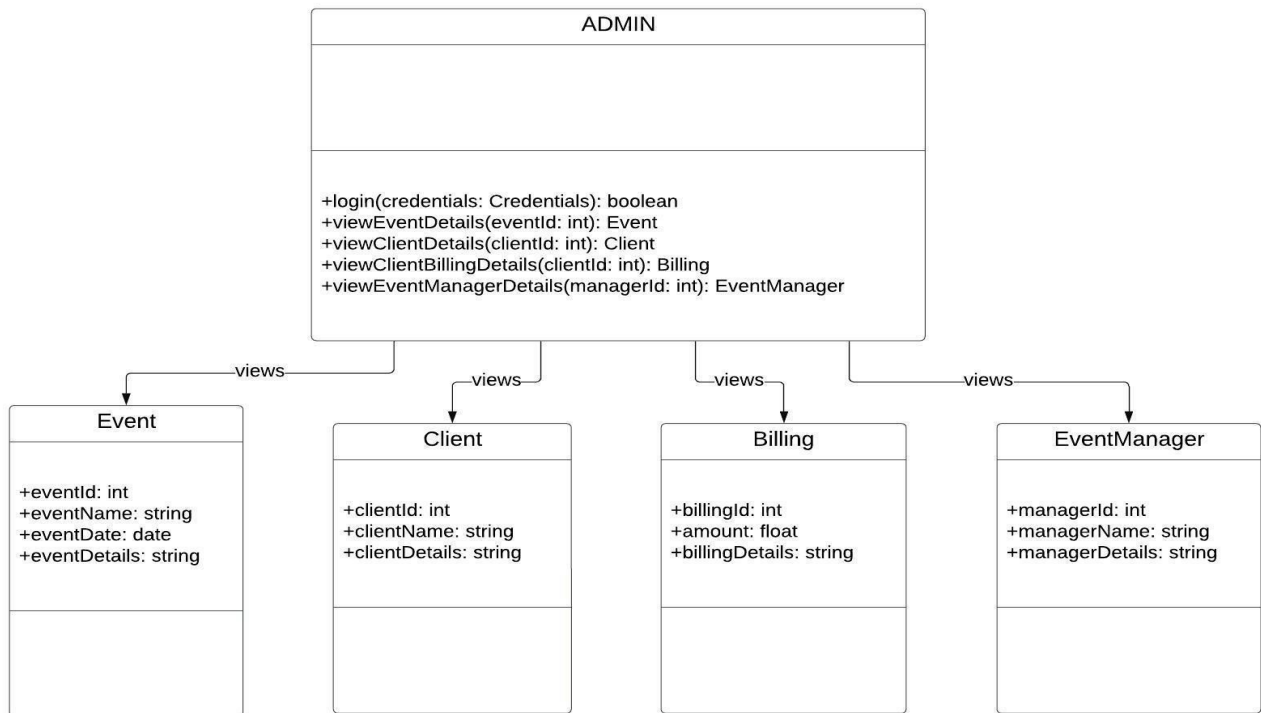
The paper proposes the use of an integrated barcode system for event management to ensure smooth and quick registrations of participants, real-time stock taking of consumables, and providing exclusive secured venue-access. This application will assist him/her in planning a successful and fun event. The system allows users to register on the application for an event. This proposed to be a web application. The project provides most of the basic functionality required for an event type e.g. [marriage, Dance Show birthday party, etc.], the system then allows the user to select date and time of event, place and the event equipment. All the data is logged in the database and the user is given a receipt number for his booking. The data is then sent to administrator (website owner) and they may interact with the client as per his requirement.

This application being as a platform to know the events, to apply for the events. Event organizer is an application under project management for managing festivals or social events like gathering, colleges, events, conferences etc

### III. METHODOLOGY



Data flow diagram is a visual representation of the flow of data within a system, depicting processes, data stores, data flows, and external entities. Processes represent activities or transformation occurring, within the system, data flows illustrate the movement of data between components, data stores indicate where data is stored, and external entities represent entities outside the system interacting with it.



The use case model is adjusted and the specifics of the system’s intricate architecture are specified using the class diagram. The use case diagram’s participants are separated into a collection of interconnected classes by the class diagram. There may be a “is-a” or “has-a” component to the connection or connection between the classes. Each category in the base class could be capable of carrying out particular tasks. The term “methods” refers to the class’s functions. In addition, each class could have a few “attributes” that set it apart from others.

#### IV. EXPERIMENTAL RESULTS

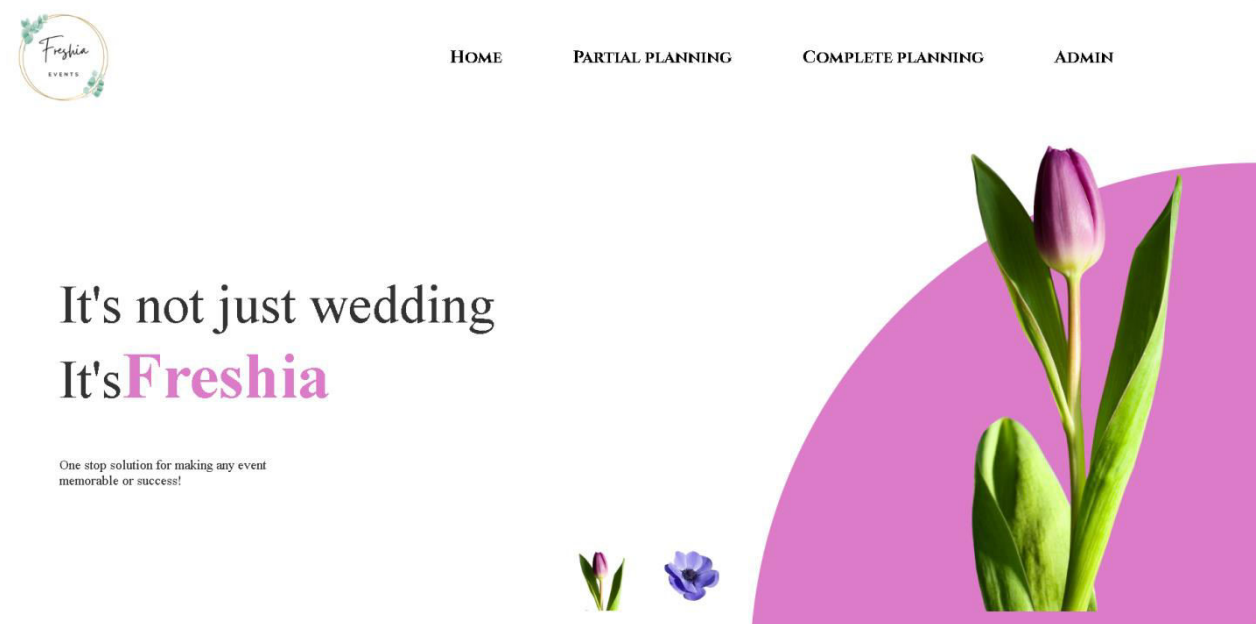


FIG 1 HOME PAGE

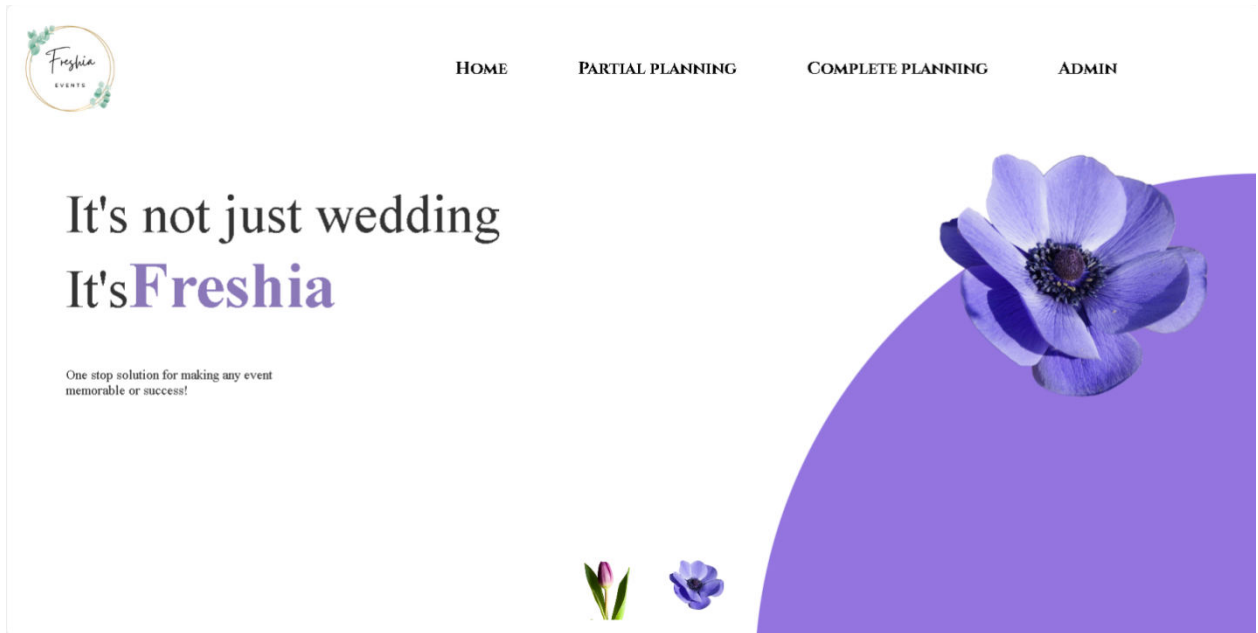


FIG 2 HOME PAGE

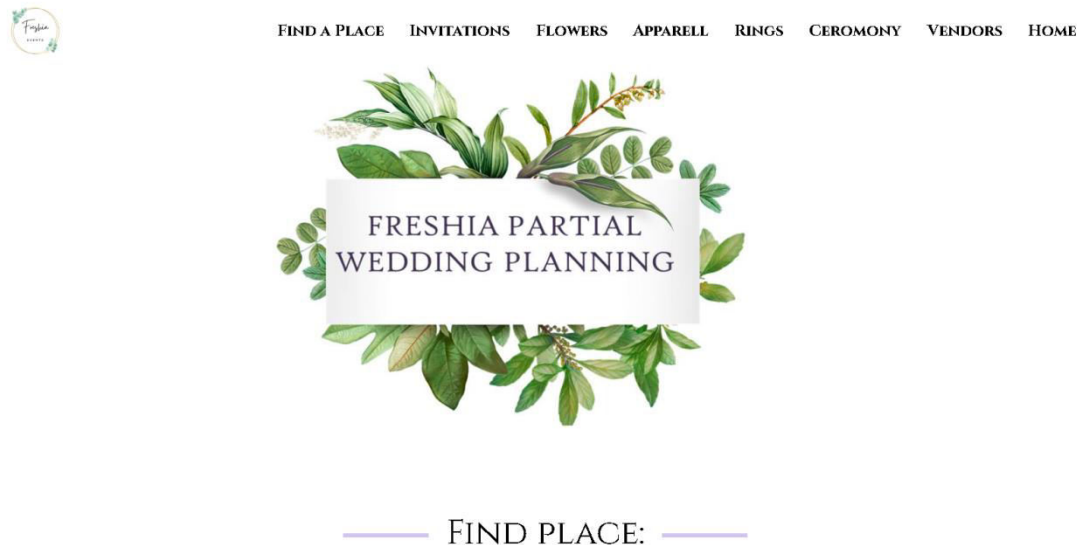


FIG 3 PARTIAL PLANNING DETAILS PAGE

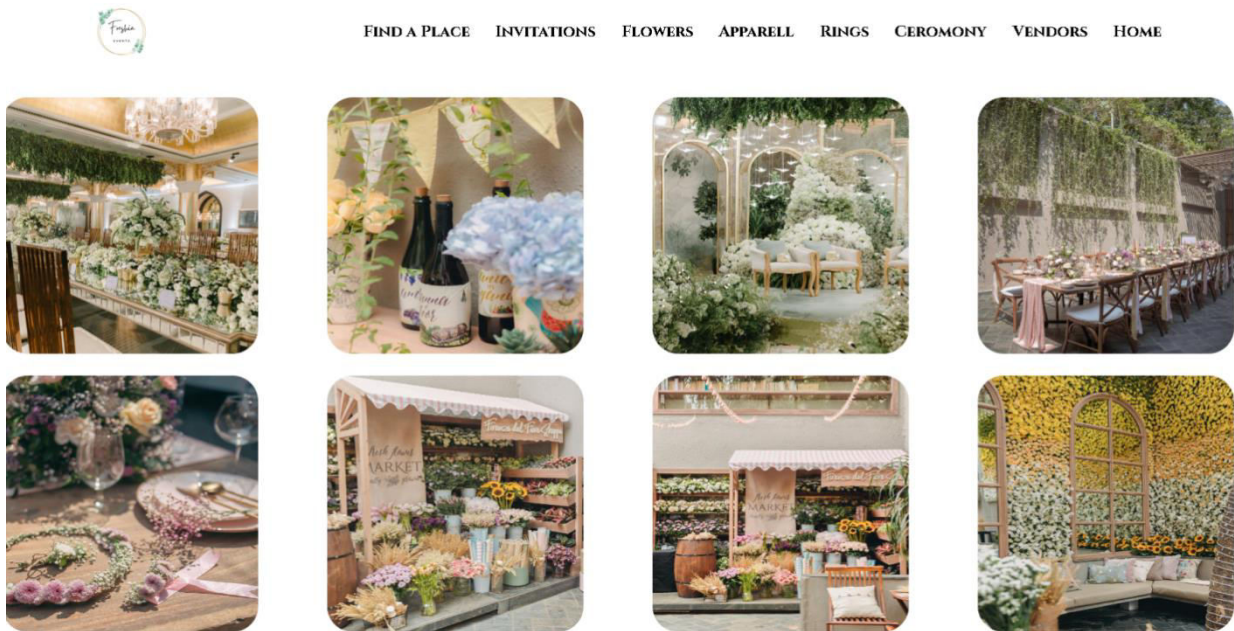



FIG 4 FLOWERS DETAILS PAGE



FIND A PLACE INVITATIONS FLOWERS APPARELL RINGS CEROMONY VENDORS HOME

FLOWERS:



**FLOWERS:**

FRESHIA IS THE GO-TO DESTINATION FOR FINDING THE PERFECT FRESH FLOWERS,AS THE NAME ITSELF SAYS FRESHIA.FRESHIA MEANS FRESHNESS.

- BRIDE BOUQUET
- BRIDESMAIDS BOUQUETS
- CORSAGES
- BOUTONNIERE
- RECEPTION CENTERPIECES
- GARLAND&GREENERY
- THROW AWAY BOUQUET

FIG 5 FLOWERS DETAILED VIDEO

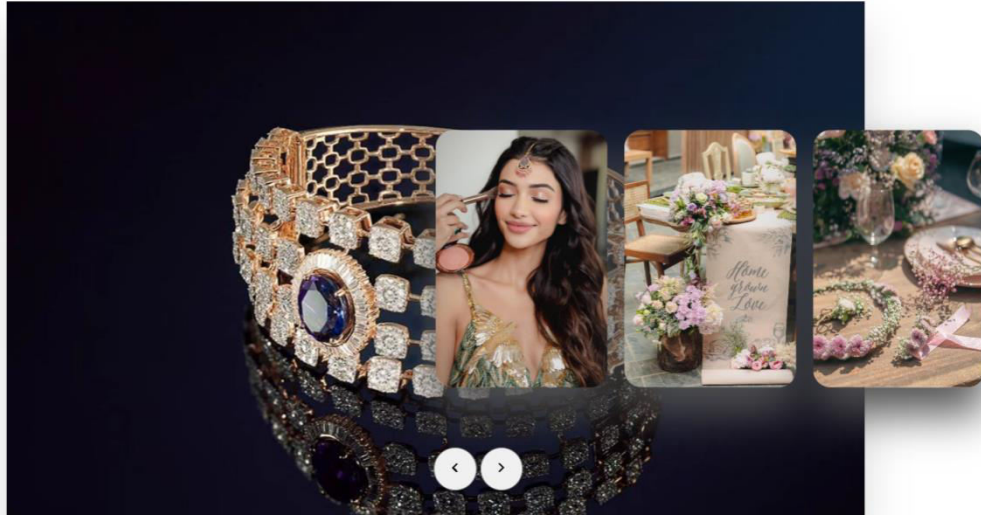


FIG 6 COMPLETE WEDDING PLANNING PAGE

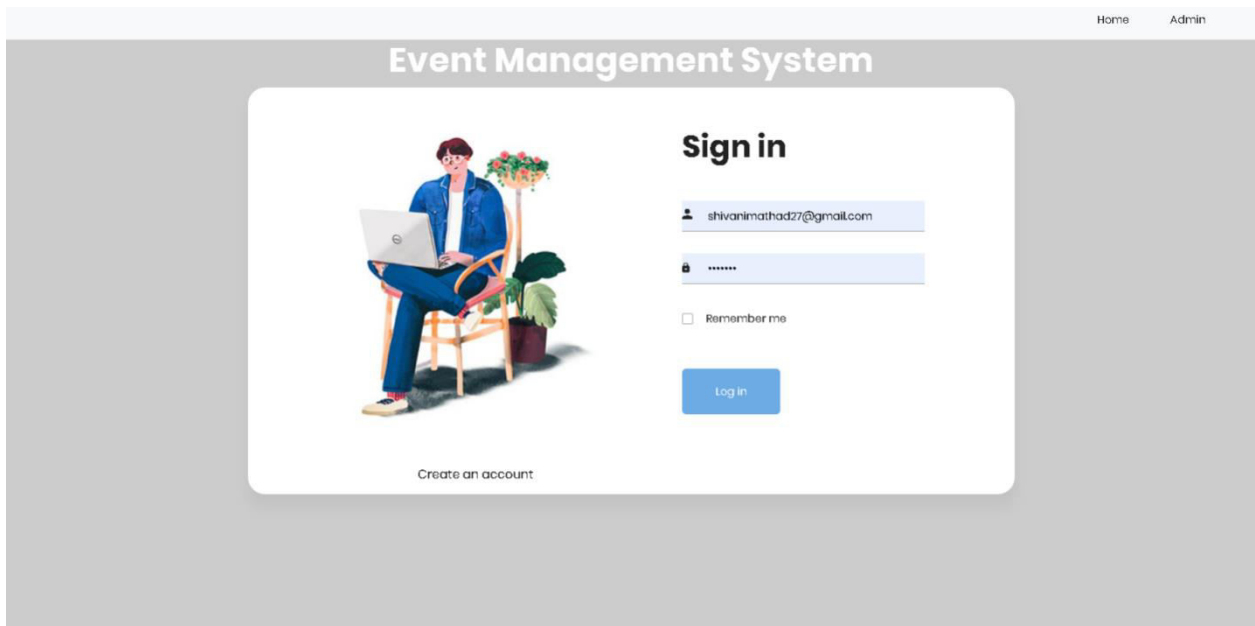


FIG 7 ADMIN LOGIN PAGE

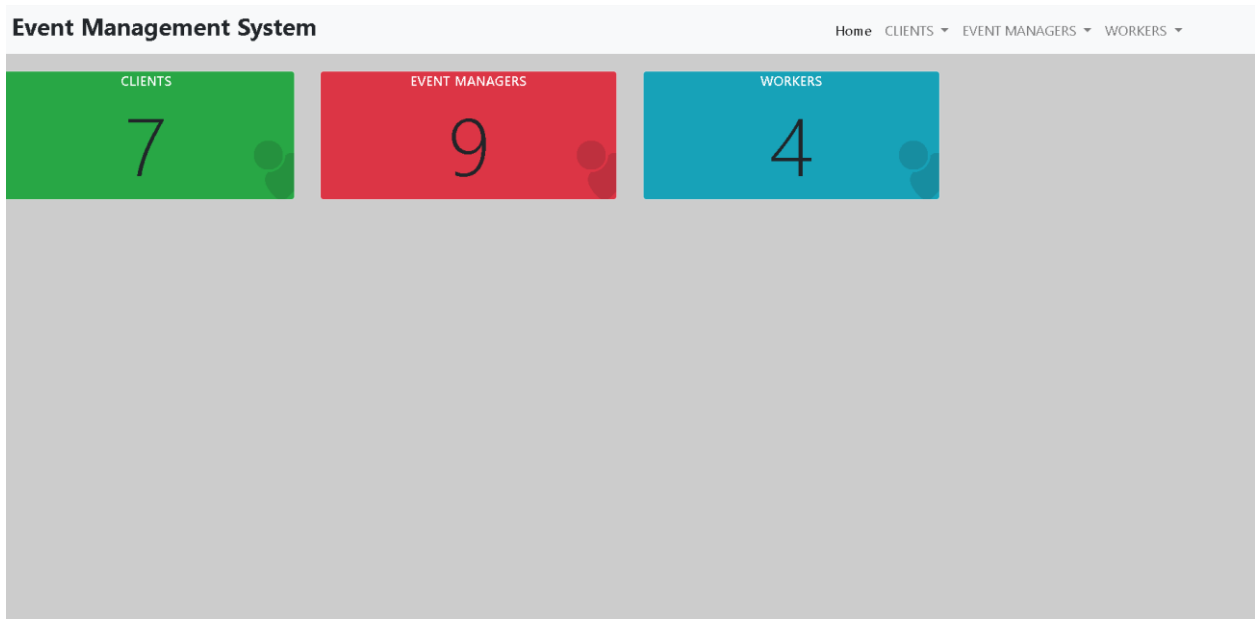


FIG 8 ADMIN HOME PAGE

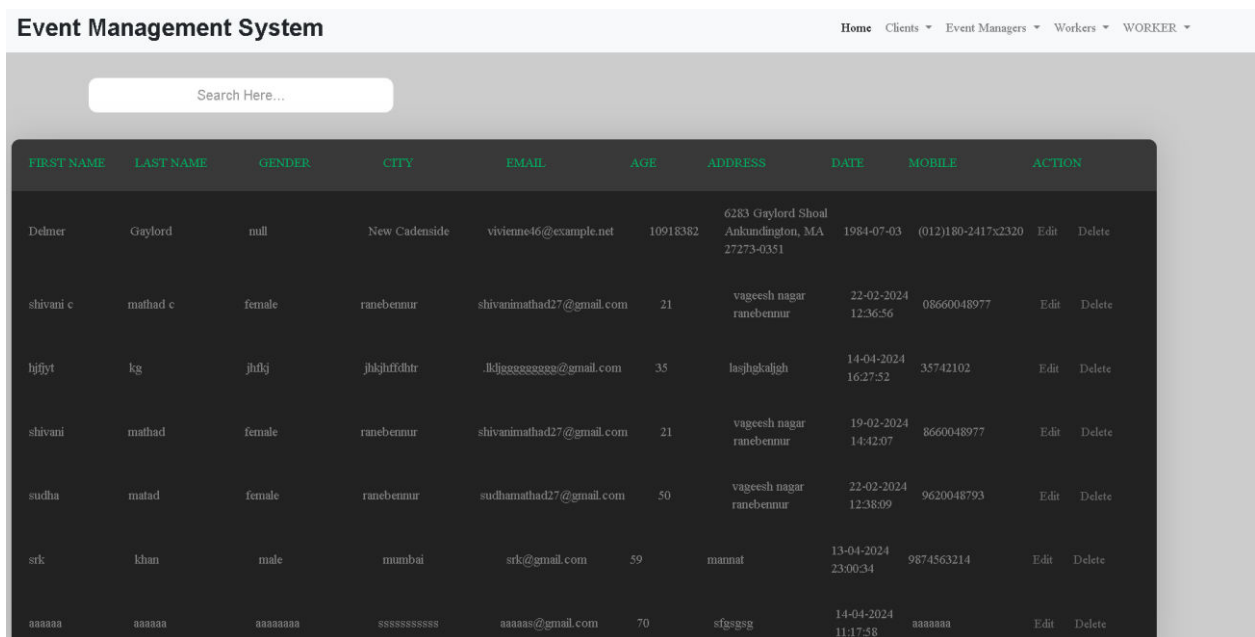


FIG 9 CLIENT DETAILS PAGE

### V. CONCLUSION

In conclusion, the Event Management System (EMS) developed using Eclipse, Java, and JSP, represents a significant advancement in the efficient management and display of event details offered by a company, alongside the secure storage of client information. The system's dual focus on event showcasing and client data management addresses the core needs of any event-focused organization, ensuring both operational efficiency and enhanced client engagement.

Moreover, the system's robust client management capabilities ensure that personal details and preferences are securely stored and easily retrievable, enabling the company to offer personalized services and maintain strong client relationships. The secure database infrastructure protects client information, maintaining confidentiality and trust, which are paramount in any client-focused business.



By leveraging the strengths of Eclipse, Java, and JSP, the EMS combines reliability, efficiency, and user-friendliness into a cohesive platform. Eclipse provides a robust development environment, Java offers stability and cross-platform capabilities, and JSP facilitates dynamic web content generation. This technological synergy results in a powerful tool that not only simplifies the complexities of event management but also enhances the overall client experience.

The implementation of the EMS marks a strategic move towards modernizing event management practices within the company. It ensures that all events are effectively promoted and managed, while clients receive the personalized attention they deserve. This holistic approach not only streamlines operations but also contributes to increased client satisfaction and loyalty.

Ultimately, the EMS is a testament to the company's commitment to leveraging technology to improve service delivery and operational efficiency. By integrating comprehensive event display features with secure client data management, the EMS provides a valuable asset that will support the company's growth and success in the competitive event management industry.

## REFERENCES

1. Oracle Java Documentation Oracle Corporation. "The Java Tutorials." Available at: [<https://docs.oracle.com/javase/tutorial/>](<https://docs.oracle.com/javase/tutorial/>). This resource provides comprehensive information on Java programming, covering essential concepts and features used in the development of the EMS.
2. Eclipse IDE Documentation Eclipse Foundation. "Eclipse IDE Documentation." Available at: [<https://help.eclipse.org/latest/index.jsp>](<https://help.eclipse.org/latest/index.jsp>)
3. This documentation offers detailed guidance on using the Eclipse IDE for Java development, which is crucial for building and managing the EMS project.
4. JavaServer Pages (JSP) Technology Oracle Corporation. "Java EE Documentation: JavaServer Pages Technology." Available at: [<https://javaee.github.io/tutorial/jsp.html>](<https://javaee.github.io/tutorial/jsp.html>)
5. This tutorial provides in-depth knowledge of JSP, explaining how to create dynamic web content and enhance user interactions within the EMS.
6. Database Security Best Practices OWASP Foundation. "OWASP Top Ten: Database Security." Available at: [<https://owasp.org/www-project-top-ten/>](<https://owasp.org/www-project-top-ten/>)
7. This resource outlines best practices for securing databases, which is essential for protecting client information stored within the EMS.



INTERNATIONAL  
STANDARD  
SERIAL  
NUMBER  
INDIA



# INTERNATIONAL JOURNAL OF INNOVATIVE RESEARCH

IN SCIENCE | ENGINEERING | TECHNOLOGY

 9940 572 462  6381 907 438  [ijirset@gmail.com](mailto:ijirset@gmail.com)



[www.ijirset.com](http://www.ijirset.com)

Scan to save the contact details