



e-ISSN: 2319-8753 | p-ISSN: 2347-6710

IJIRSET

International Journal of Innovative Research in
SCIENCE | ENGINEERING | TECHNOLOGY



INTERNATIONAL JOURNAL OF INNOVATIVE RESEARCH

IN SCIENCE | ENGINEERING | TECHNOLOGY

Volume 13, Issue 5, May 2024

ISSN INTERNATIONAL
STANDARD
SERIAL
NUMBER
INDIA

Impact Factor: 8.423

 9940 572 462

 6381 907 438

 ijirset@gmail.com

 www.ijirset.com

Orphanage Aid and Assistance Management

Mrs. Harshita D. Jain, Priyanshu G. Bagde, Krunal S. Sawwalakhe, Darshan M. Shahare,
Vishakha M. Gaygaye, Shruti H. Patil

Department of Information Technology, Kavikulguru Institute of Technology and Science, Ramtek, Nagpur M.S, India

ABSTRACT: An orphanage is an institution for taking care of orphan-children whose parents are unwilling or unable to take care of them. Orphans can have various needs, an orphanage can have various requirements to fulfil those needs, some orphanages can lack food some might not have proper medicines while some may have financial crises as it may or may not be government aided. The purpose of this is to develop a centralized site for orphanages. In the below suggested system we expect to provide an interface between Orphanages or Old age Homes which are in need of charity and people, Volunteers who are willing to help these people. The managers of the orphanages may also be contacted by volunteers for assistance that they may be able to provide. Internet banking and online payment applications can be used for donation. Apart from donations the site focuses on the registration of the volunteer his specific personal details and its validation for adoption related analysis. Proper services to the ones who have recently lost their families and the enrolment of the deprived.

KEYWORDS: Centralized site, Volunteers, Adoption, Orphanage, Registration

I. INTRODUCTION

Orphanage Aid and Assistance Management is an innovative platform dedicated to transforming the landscape of orphan care by addressing the inherent challenges faced by orphanages, volunteers, and donors. Motivated by a genuine commitment to enhancing the well-being of orphaned children, Orphanage Aid and Assistance Management strives to create a more accessible and efficient space for collaborative efforts. The current orphan care system grapples with fragmented communication and inefficiencies, prompting the need for a unified solution.

Orphanage Aid and Assistance Management is dedicated to transforming the landscape of orphanage support by introducing an innovative platform that facilitates seamless connections among orphanages, volunteers, and donors. The inception of this platform stemmed from a deep understanding of the deficiencies within the current system, igniting a fervent desire to enact substantial change. By surpassing conventional methods, Orphanage Aid and Assistance Management serves as a driving force for constructive transformation, providing a cutting-edge digital space for effortless collaboration and coordination. Through its forward-thinking approach, the platform not only bridges the gap between stakeholders but also fosters a harmonious environment conducive to maximizing impact and support for orphanages worldwide.

The inception of the platform finds its roots in the fundamental belief that a cohesive and cutting-edge technological solution has the potential to revolutionize communication channels, enhance collaboration efforts, and ultimately pave the way for a more promising future for orphaned children worldwide. Upheld by the pillars of empathy, efficiency, and inclusivity, Orphanage Aid and Assistance Management is dedicated to reshaping the landscape of support mechanisms. Through a comprehensive and interconnected strategy, Orphanage Aid and Assistance Management aspires to cultivate a transformative environment where the combined endeavours of orphanages, volunteers, and donors intersect harmoniously to effect enduring positive transformations in the lives of orphaned children. By fostering a community that values cooperation, innovation, and compassion, the platform endeavours to establish a sustainable framework that addresses the multifaceted needs of orphaned children, propelling them towards a brighter and more hopeful tomorrow.

A cutting-edge web-based application called Orphanage Aid and Assistance Management was created to help orphans, volunteers, and donors communicate. Driven by a common goal of enhancing orphan care, this project aims to improve cooperation and assistance in this crucial field. This platform has an easy-to-use interface that facilitates remote communication and guarantees a simple experience for funders and volunteers alike. Orphanage Aid and Assistance Management builds a virtual community that encourages empathy and offers practical help through cutting-edge technologies and strong security measures. Orphanage Aid and Assistance Management acts as a catalyst in this digitally linked age, bringing people and organizations together to have a big influence on orphan care.

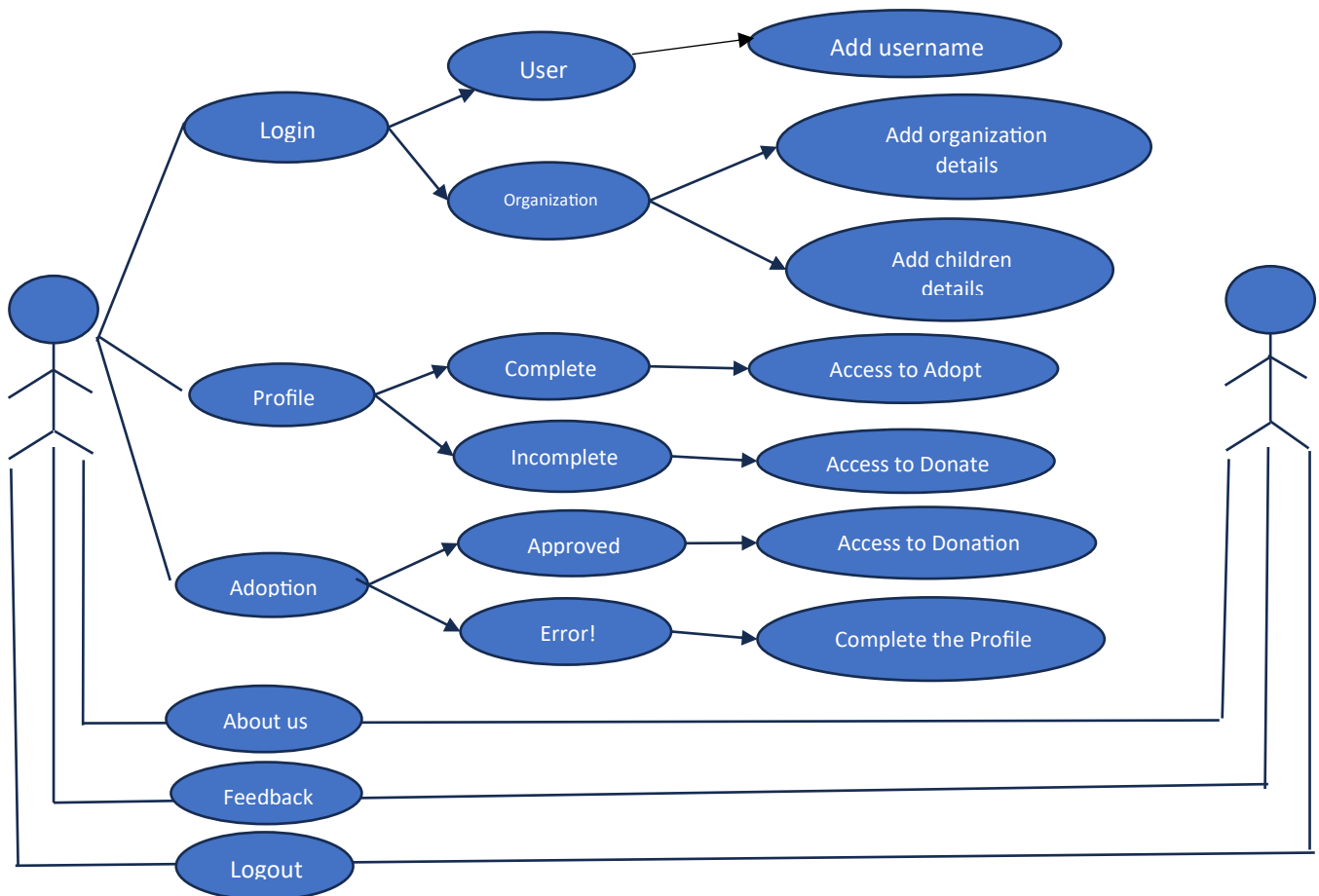


Fig. 1: Use Case Diagram

II. LITERATURE REVIEW

Orphanage Aid and Assistance Management is motivated by a sincere commitment to address challenges faced by orphanages, volunteers, and donors in collaborative efforts. The genuine desire to enhance the well-being of orphaned children and improve the efficiency of support systems drives this initiative. Inspired by the limitations of existing systems, Orphanage Aid and Assistance Management aims to create a novel, streamlined platform, transcending traditional approaches for seamless connection among orphanages, volunteers, and donors.

Significance of Orphanage Aid and Assistance Management:

The primary aim of Orphanage Aid and Assistance Management is to serve the human being. At the core of Orphanage Aid and Assistance Management is an innovative solution, aiming to rectify the deficiencies of current orphan care systems. The proposed system serves as a centralized hub, fostering seamless communication and collaboration among orphanages, volunteers, and donors. With a user-friendly interface and intuitive features, it streamlines processes for efficient engagement. Real-time updates enable effective communication of orphanages' needs, volunteers finding opportunities, and donors identifying impactful causes. Orphanage Aid and Assistance Management's system promises to create an interconnected ecosystem, maximizing the impact of support for orphaned children. The central aim of the Orphanage Aid and Assistance Management website is to facilitate comprehensive support for orphanages and the children they care for.

Traditional Methods and Limitations:

The traditional method for managing aid and assistance in orphanages typically involves a centralized approach where an organization or government entity oversees the distribution of resources, funds, and services to orphanages. Orphanages vary in size, location, and the needs of the children they serve.

Standardized programs may not adequately address the unique requirements of each orphanage or cater to the diverse needs of the children. Lack of stakeholder involvement can lead to solutions that do not fully address the concerns and perspectives of those directly involved in caring for the children. Paper-based systems are prone to errors, inefficiencies, and data loss. They can hinder transparency and accountability in aid management.

Technological Advancements:

In recent years, significant advancements have been made in managing the orphanages, many policies have been made and implemented by various institutions and the government. Several acts on children welfare had come into existence with the rise in technologies. Technological advancements have revolutionized orphanage management systems, offering innovative solutions to address various challenges and improve efficiency, transparency, and accountability.

Challenges and Opportunities:

The Orphanage Aid and Assistance Management platform has immense potential for growth and impact in the field of orphan care. Some future scope and recommendations for further enhancing the platform:

- **Expansion of Services:** Considering expansion of the services offered on the platform to include mentorship programs, educational resources, and mental health support for orphaned children. This holistic approach can address the diverse needs of children in orphanages.
- **Partnerships and Collaborations:** Forge partnerships with NGOs, government agencies, and corporate entities to amplify the reach and impact of the platform. Collaborations can lead to increased resources, funding, and support for orphanages and children. By embracing these future scope and recommendations, Orphanage Aid and Assistance Management can further solidify its position as a transformative platform in the orphan care sector.

III. PROPOSED WORK

Orphanage Aid and Assistance Management, a web-based platform is chosen to ensure widespread accessibility across various devices and web browsers. This choice guarantees that orphanages, volunteers, and donors can seamlessly interact with the platform, regardless of their preferred devices. A web-based platform ensures that users can engage with the platform without any installation hassles. Meanwhile, modern frameworks enable rapid development and allow developers to focus on building features and functionality rather than low-level coding. The selection of these technologies reflects a commitment to delivering a cutting-edge platform capable of meeting the diverse needs of orphanages, volunteers, and donors.

The Database Management module is at the core of the system, responsible for the efficient storage and retrieval of data. In this context, MySQL is the chosen database engine, a widely-used and highly reliable relational database management system. It is designed to handle complex data structures and relationships, making it ideal for managing user profiles, orphanage information, and user interactions. Data security is of paramount importance in this module. Stringent measures are implemented to safeguard sensitive user and orphanage data. This includes encryption of data in transit, achieved through the use of HTTPS (Hypertext Transfer Protocol Secure), which ensures secure communication between users and the platform. Additionally, data at rest is encrypted, providing a safeguard against unauthorized access to stored data. The database management module is a critical element in the project, ensuring that data is stored securely and can be efficiently retrieved to provide users with a seamless and responsive experience.

The User Authentication module is an essential component of the platform's security infrastructure. It is designed to protect user accounts, including those of orphanages, volunteers, and donors, from unauthorized access. This module incorporates a secure and user-friendly authentication mechanism that ensures the highest level of account security. Authentication is the process by which users prove their identity before gaining access to their accounts. It often involves a combination of factors, including a username and password. However, to enhance security, advanced techniques like password hashing and salting are applied. Password hashing involves transforming the user's password into a secure, irreversible format. This ensures that even if the database is compromised, the actual password is not exposed. Two-factor authentication (2FA) can be implemented as an additional layer of security. It requires users to provide two separate forms of identification before gaining access to their accounts, adding an extra layer of protection. The User Authentication module ensures that users can access their accounts securely while maintaining the privacy and integrity of their data.

The Communication and Interaction module is at the heart of fostering engagement and collaboration among orphanages, volunteers, and donors. Effective communication is a key driver for any platform aiming to connect individuals with common goals. This module introduces features that facilitate smooth interaction between these different user roles. A central component of this module is the integration of a messaging system. This system enables users to communicate directly, making inquiries, sharing information, or discussing potential collaborations.

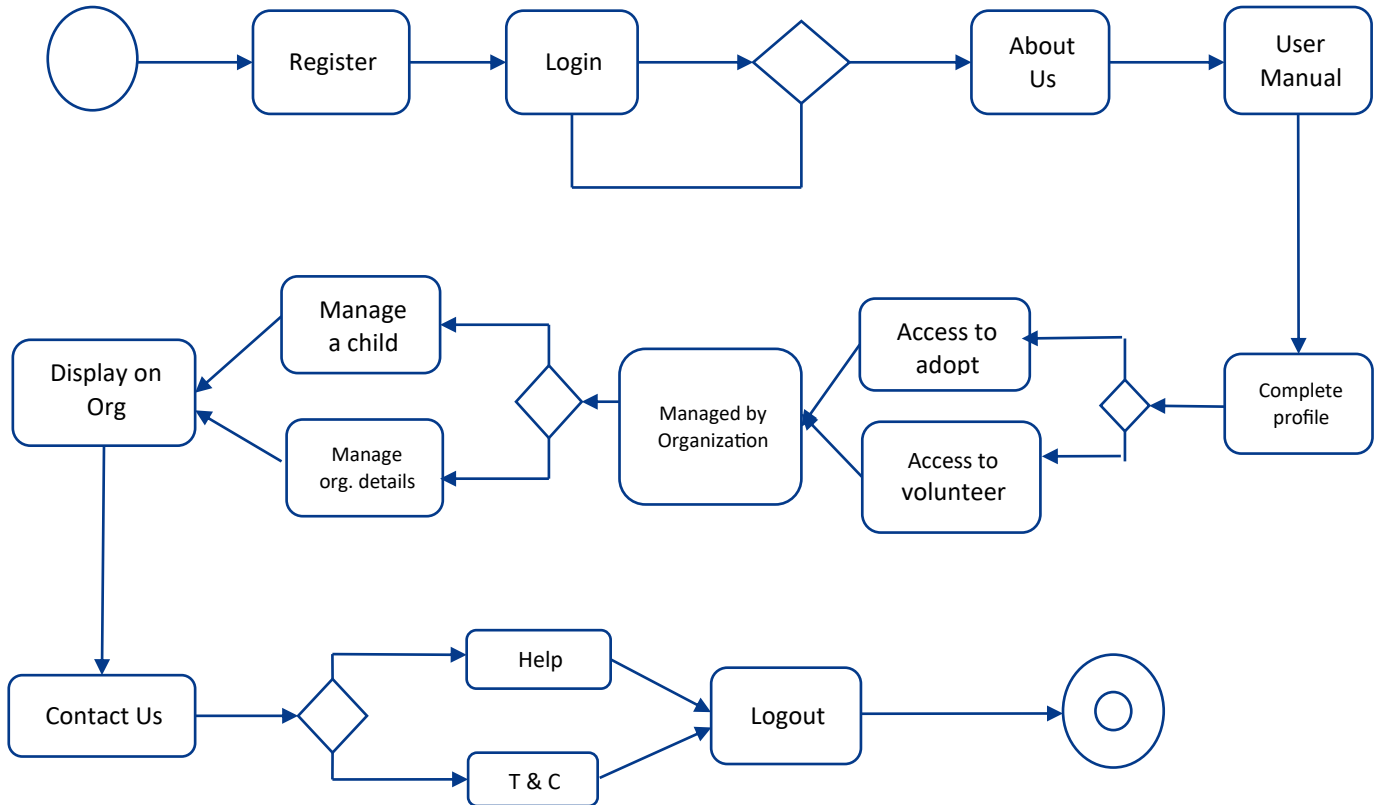


Fig. 2: Activity Diagram of Orphanage Aid And Assistance Management

MAIN INTERFACE OF SYSTEM

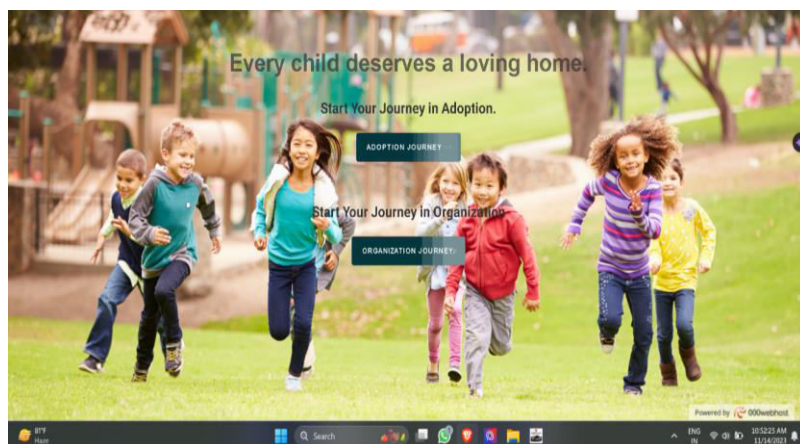


Fig. 3: Home Page of The Orphanage Aid and Assistance Management

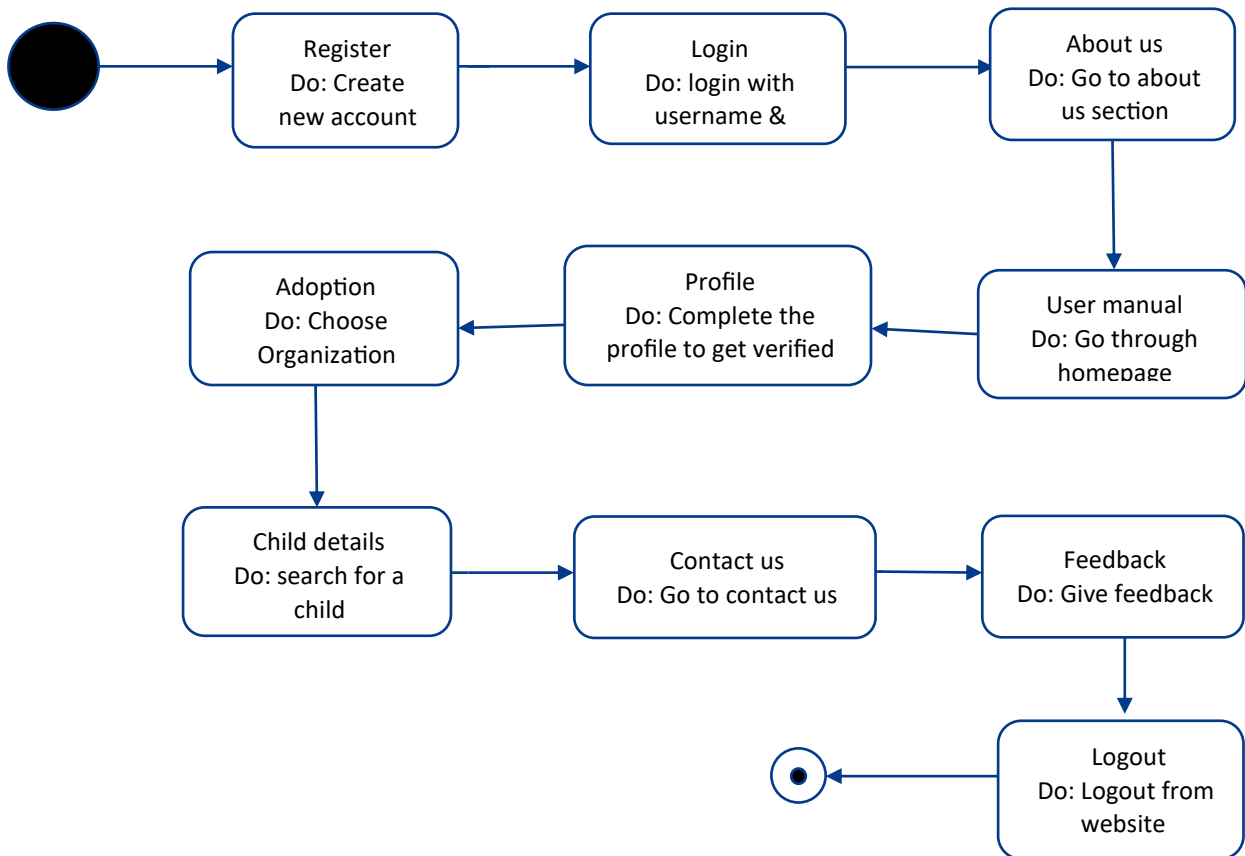


Fig. 4: State Diagram

The diagram depicts a flowchart outlining the adoption process on a website.

Register: This field allows users to create a new account if they are new to the website.

Login: This field allows existing users to login to their accounts using their username and password.

About Us: This field provides information regarding the website and the organization it represents.

Adoption: This field allows users to search for a child to adopt. There is a possibility that users have to choose the adoption organization as well.

Profile: This field allows users to create or update their profiles. Updating the profile might be required to get verified by the adoption organization. There's also a user manual to guide users through this process.

Contact Us: This field allows users to contact the website administrators if they have any questions.

Feedback: This field allows users to provide feedback about the website.

Logout: This field allows users to log out of their accounts.

Overall, the flowchart outlines the steps involved in adopting a child through the website. It begins with creating an account and logging in. Then, users must complete their profile and choose an adoption organization. After that, they can search for a child to adopt. Finally, the website offers contact information and a feedback option.

The system had been integrated and brought up with HTML, CSS, PHP. HTML allows for the integration of multimedia elements like images and videos, which can be utilized to showcase orphanage facilities, highlight success stories, or provide training resources for staff. CSS is utilized to design and style various components of the software interface, ensuring consistency, readability, and aesthetic appeal across different devices and screen sizes. The use of PHP in this context allows for the creation of dynamic web applications that can handle various aspects of orphanage management seamlessly. PHP's flexibility enables developers to design user-friendly interfaces for administrators to

manage orphanage operations, including tracking resident information, managing staff schedules, handling donations, and coordinating events.

IV. RESULT AND ANALYSIS

The system's interface bridges the gap between orphanages, old age homes, and compassionate individuals, fostering a community of giving and support. It streamlines the process of donating essential items like food, clothes, and funds, while also offering opportunities for child sponsorship and educational support.

The Main Page User Interface (UI) serves as the gateway to the Orphanage Aid and Assistance Management, offering a cohesive and intuitive experience for users. The intricate design and functionality considerations embedded within the UI, aiming to provide a comprehensive understanding of its structure and purpose.

The Main Page UI encapsulates a myriad of functionalities tailored to meet the diverse needs of orphanage management. Features prominently displayed on the interface include; Dashboard Overview, User Authentication, Profile Management, Task Management, Donation Tracking, Child Information Database.

V. ADVANTAGES AND LIMITATAION

Orphanage Aid and Assistance Management proposes some of the underlying advantages:

1. **Centralized Platform:** The platform serves as a centralized hub for orphanages, donors, and volunteers to connect, collaborate, and support each other effectively. This centralized approach streamlines communication and coordination, making it easier for stakeholders to interact and engage with each other.
2. **Efficient Communication:** By providing real-time updates and streamlined communication channels, the platform facilitates efficient interaction among orphanages, volunteers, and donors. This enhances transparency, reduces delays, and ensures that critical information is shared promptly.
3. **User-Friendly Interface:** The system features an intuitive and user-friendly interface that enhances engagement and usability for all users. A well-organized navigation menu and personalized user profiles contribute to a seamless user experience.
4. **Resource Management:** The platform promotes responsible resource management within orphanages by encouraging sustainable practices for long-term financial stability and efficient resource utilization. This focus on sustainability helps orphanages optimize their operations and enhance their impact.
5. **Volunteer Opportunities:** The platform connects volunteers with orphanages seeking assistance in various areas, making it easier for individuals to find meaningful opportunities to contribute to the well-being of orphaned children
6. **Donor Engagement:** Donors can easily identify impactful causes and contribute seamlessly through the user-friendly system. The platform provides a secure online donation management system that allows donors to support specific orphanages or general needs, fostering a culture of giving and support.
7. **Advocacy and Awareness:** The platform advocates for child welfare, raises awareness about the challenges faced by orphans, and promotes systemic change to address the root causes of orphanhood. By fostering a community of giving and support, the platform encourages individuals to join the movement and create positive change.

LIMITATION

1. **Access and Connectivity Issues:** Orphanages in remote or underprivileged areas may face challenges in accessing and utilizing the platform due to limited internet connectivity or technological infrastructure.
2. **Language and Cultural Barriers:** The platform may not cater to diverse languages or cultural contexts, potentially hindering effective communication and engagement with orphanages, volunteers, and donors from various backgrounds.

VI. CONCLUSION

In conclusion, the Orphanage Aid and Assistance Management platform stands as a beacon of hope and progress in the realm of orphan care. By addressing the challenges faced by orphanages, volunteers, and donors, this innovative system aims to revolutionize the way support is provided to orphaned children.

Through a foundation built on humanity, care, and love, the platform facilitates seamless connections between those in need and those willing to help. By using this technology, users can easily locate our orphanage, donors, and volunteers, even in times of restricted mobility such as during the COVID-19 pandemic.

REFERENCES

1. Dr. K. Kasturi, M. Nisha, Alochana Chakra Journal (June 2023). "App for Orphan" from International Journal & Research Paper Publisher | IJRASET Volume 11 Issue VI.
2. Priya Date, Sanika Malunje, Navale S.K (November 2022). "Orphanage Management System" Taken from IRJMETS - Low cost journal with DOI publication fast paper publication| Engineering, Scientific journal Volume:04/Issue:11.
3. Avantika Tiwari, Shivam Shinde, Hrudyesh Salunke, Prof. Rohit Barve "Home for Orphans (Orphanage Application)" (November 2021). Taken from IRJET- International Research Journal of Engineering and Technology_Volume: 08 Issue: 11.
4. Kasturi Karuppiyah (June 2021). Android Application for Orphanage Management using Data Mining Techniques from (PDF) Android Application for Orphanage Management using Data Mining Techniques (researchgate.net).
5. K. Santhosh Kumar, P. Ashish Kumar, V.K.G. Kalaiselvi (August 2020). "Orphanage Helping System"; Taken from (mapletreejournals.com) volume,issue2(5): 15-19.
6. A.P. Junfithrana, E. Liani, M. Z. Suwono, D. Meldiana, A. Suryana, (2018). Rice Donation System in Orphanage Based on Internet of Things, Raspberry-Pi, and Blockchain, In (2018) International Conference on Computing, Engineering, and Design (ICCED), IEEE, 235-238.
7. M. Archana, K. Mouthami, Charity Connecting System, (2014). International Journal of Latest Technology in Engineering, Management & Applied Science.
8. Joorabchi, M. E., Mesbah, A., & Kruchten, P. (2013, October). Real challenges in mobile app development. In (2013) ACM/IEEE International Symposium on Empirical Software Engineering and Measurement IEEE (pp. 15-24).
9. SreckoNatek, MotiZwilling (2014). "Student data mining solution–knowledge management system related to higher education institutions" Expert Systems and its Applications Vol. 41(14), pp 6400-6407.
10. Naren, J., Nikilav, P. V., Kate, A. V., & Mohan, A. (2015). Deduction of orphans and suitable parent candidates using Statistical Modelling. International Journal of Applied Engineering Research, 10(22).
11. Kasturi, K., & Prasanna, S. (2019). A Hybrid Ensemble Classification Approach to Determine the Impact of Asthma in Association with Gastro Esophageal Reflux Symptoms. Indian Journal of Public Health Research & Development, 10(2), 191-196.
12. M. Selvaganapathy, M. Rakesh varshan, and Dr. R. Vijayakumar from Department of Computer Science Engineering, Sri Ramakrishna Engineering College. (June 2020) "Online Orphanage Organization" International Research Journal of Engineering and Technology (IRJET) Available at https://www.irjet.net/archives/V7/i6/IRJET_V716795.pdf
13. Prof. Rohit Barve Avantika Tiwari, Shivam Shinde, Hrudyesh Salunke (July 2020). "Home for Orphans", International Research Journal of Engineering and Technology.
14. Mr. Setiadi Sutedja (2019). "Android – Based Nearby Location App for Orphanage Searches Using Google Place API Technology with Agile System Development Method", in journal of tech-e
15. ACNC. (n.d.). Australian Charities and Not-Profits Commission (April 2017). Retrieved from Keep charity records: <https://www.acnc.gov.au/for-charities/manage-your-charity/obligations-acnc/keep-charity-records>.
16. Krishnam, S. (November 23 2016). "Orphanage Management System"- Shreya Krishnam- Medium. Retrieved from Shreya Krishnam- Medium: <https://medium.com/@shreyakrishnam/orphanage-management-system-7d996ca3f>
17. Kasturi, K., & Prasanna, S. (2016). Data Mining Approach of Classification for Managing Asthma in Children. International Journal of Emerging Technologies in Engineering Research (IJETER).
18. K. Santosh Kumar, P. Ashish Kumar, V.K.G. Kalaiselvi (2021). "Orphanage Helping System", International Research Journal of Multidisciplinary Technovation.
19. Olatunbosun Jude, Abuh Emmanuel O, (2021). "Orphans Record Management and Tracking System for House of Hope Orphanage in Jos, Plateau State", International Journal of Innovative Science and Research Technology.



INTERNATIONAL
STANDARD
SERIAL
NUMBER
INDIA



INTERNATIONAL JOURNAL OF INNOVATIVE RESEARCH

IN SCIENCE | ENGINEERING | TECHNOLOGY

 9940 572 462  6381 907 438  ijirset@gmail.com



www.ijirset.com

Scan to save the contact details