



e-ISSN: 2319-8753 | p-ISSN: 2347-6710

IJRSET

International Journal of Innovative Research in
SCIENCE | ENGINEERING | TECHNOLOGY



INTERNATIONAL JOURNAL OF INNOVATIVE RESEARCH

IN SCIENCE | ENGINEERING | TECHNOLOGY

Volume 13, Issue 5, May 2024

ISSN INTERNATIONAL
STANDARD
SERIAL
NUMBER
INDIA

Impact Factor: 8.423

9940 572 462

6381 907 438

ijirset@gmail.com

www.ijirset.com

Administrative Tax Collection System

Mr. Sachin Meshram¹, Kartik Thakre², Samiksh Wanjari³, Rahul Salame⁴, Manish Golhar⁵,
Rohit Kashti⁶

Assistant Professor, Department of Information Technology, Kavikulguru Institute of Technology and Science,
Ramtek, Nagpur M.S., India¹

U.G. Student, Department of Information Technology, Kavikulguru Institute of Technology and Science, Ramtek,
Nagpur M.S., India^{2,3,4,5,6}

ABSTRACT: The project's main goal is to create a thorough system for collecting administrative taxes, making the process smoother. This system will use digital tools to ensure that payments are tracked efficiently, made on time, and managed transparently, which will improve governance in rural areas. It will include features like online payments, automatic record-keeping, and easy-to-use interfaces for both administrators and taxpayers. These features will encourage more people to comply with tax regulations and make it easier to hold both taxpayers and administrators accountable. Essentially, the Administrative Tax Collection System is a modernization effort aimed at improving how taxes are collected in rural areas, replacing old methods with a more efficient and transparent digital platform designed to serve both taxpayers and administrators effectively.

Taxpayers enjoy a user-friendly registration process, simplified tax assessment procedures, and various online payment methods, making it easier for them to comply with tax regulations. On the administrative side, the system provides instant updates and accurate record-keeping, reducing the need for manual data entry and improving overall financial management. Moreover, it incorporates strong security measures to safeguard financial data and ensure transaction integrity. By embracing digitalization, the system not only modernizes financial processes but also promotes transparency and effective governance. This effort is in line with the broader trend of using technology to empower rural areas, stimulating economic growth, and enhancing local governance efficiency.

KEYWORDS: Tax Collection System, Rural Governance, Digital Platform, Online Payment, Financial Management

I. INTRODUCTION

The tax collection system is vital for managing finances and governance in gram panchayats, crucial for revenue generation and resource allocation. In rural India, where gram panchayats are key for local self-government, an effective tax system is necessary for sustaining development and meeting community needs. This system involves processes, procedures, and infrastructure for levying, collecting, and managing taxes by local authorities, aiming to ensure transparency, accountability, and fairness. The first stage entails assessing taxable entities and properties within the gram panchayat, categorizing them based on type, size, location, and usage, and setting appropriate tax rates. This assessment also considers community income levels to distribute the tax burden equitably. Through comprehensive data analysis, gram panchayats aim to establish a taxation foundation reflecting economic realities and development priorities.

Once tax liabilities are determined, various mechanisms are employed to collect dues, including issuing bills or notices with payment details and deadlines, using traditional methods or modern digital platforms. The system may also offer instalment options, waivers, or exemptions for eligible individuals or groups to ensure inclusivity and compliance. Monitoring compliance and enforcing tax laws are critical aspects, involving tracking payment status, addressing non-compliance, and imposing penalties or legal actions on defaulters to maintain public trust and revenue integrity. Through effective monitoring and enforcement, the tax collection system aims to uphold fiscal discipline and promote sustainable development within the gram panchayat.

II. RELATED WORK

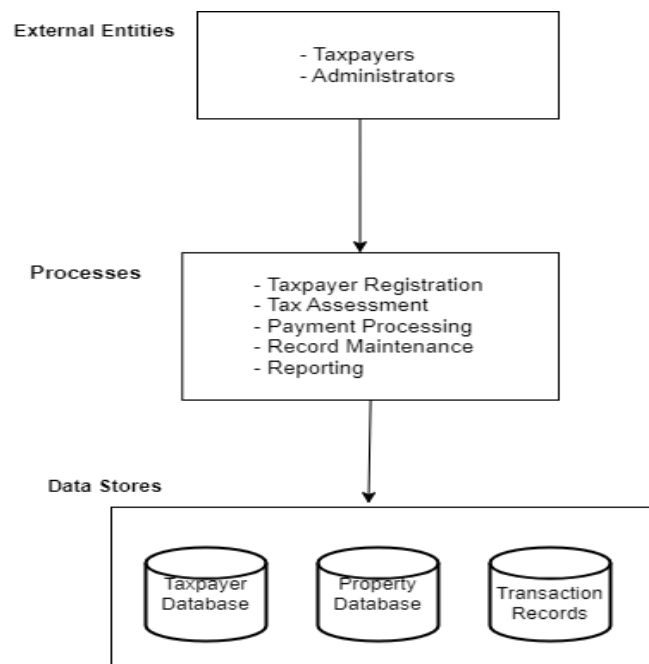
The first paper proves the tax collection and management mode studied in this paper, so that taxpayers can pay taxes more conveniently and quickly, and puts forward the method of improving the tax collection and management

system. Although the taxation supervision system can be perfected, it may not be perfect enough to give people the most intuitive answers, so we should consider more humane issues when improving the comprehensiveness of these systems Chen Lihong et al. [1]. In next paper, they implemented the new individual income tax law reduces the comprehensive tax rate of the individual income tax, making the design of the tax system more complex. Because low tax rate and strict tax collection and management are more equitable tax system arrangements, at the same time, when the tax system design is more complex, if the tax collection and management cannot keep up, it may cause tax loopholes, not conducive to the protection of income, but also damage fairness. Ying Wang and Pan Wang et al. [2]. In [3], The conclusion resulted in this research is in the form of an architectural design model which integrate tax payment of e-billing system with the payment system in the financial technology industry. Design model used in this research is the Service Oriented Architecture (SOA) approach to REST technology. The design included the form of technology architecture design, data modelling, use case diagram and service use case as well as system integration architecture. In [4] they concluded that, The E-taxation is not a new system, but a rather local solution to a problem with global purview. This system looks at how tax payment can be encouraged through simplification and increased efficiency in payment processing. Individuals can depend on this platform to carry out their duties as citizens. In [5], Designating some of the panchayat taxes as obligatory seems to have a positive effect in Madhya Pradesh and Chhattisgarh as these taxes are collected by some GPs as against little contribution from optional tax collections in Orissa and Rajasthan. However, specifying mandatory collection of some taxes in Madhya Pradesh and Chhattisgarh has not resulted in exploitation of such taxes by all the GPs. Demarcating some taxes for obligatory collection, therefore, is not sufficient, they need to be monitored for better tax yield. The panchayat tax structure should be restructured first by designating some important taxes as obligatory, where all the taxes are optional, and second, by putting up supervisory mechanism at the PRI level to monitor adherence.

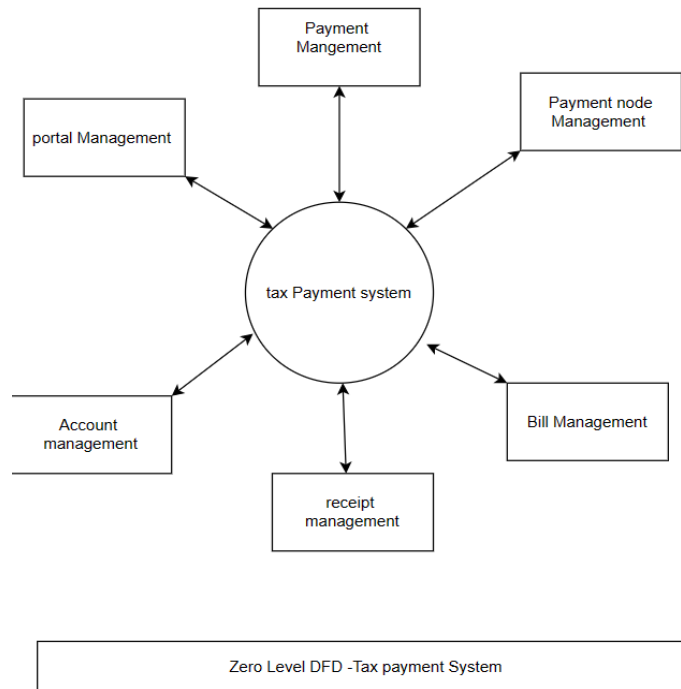
III. METHODOLOGY

We're embarking on a project to create a web application tailored for both taxpayers and administrators at the local administrative office. As part of this initiative, we've decided to include a submodule that handles login and sign-up processes to ensure security and authentication. Users will provide essential details like their house or plot number, name, mobile number, and password during sign-up. Once registered, users will access the system through their plot number, granting them access to the platform where they can conveniently and securely pay their taxes. Our goal is to develop a user-friendly interface that prioritizes security and ease of use, enabling taxpayers to fulfill their obligations confidently.

Figures shows the actual architecture or the work flow of the application through which the methodology flows. Figs.(a) and (b)shows the data flowed throughout the application and user case diagram respectively.



(a)



(b)

Technologies-

HTML (Hypertext Markup Language): It is the backbone of web development, used to create web pages and applications. Together with CSS (Cascading Style Sheets) and JavaScript, it forms the essential trio for building websites. HTML documents are received by web browsers from servers or local storage and then transformed into multimedia web pages. It primarily defines the structure of a webpage and was initially responsible for its appearance. HTML Forms are essential for collecting data from site visitors, enabling actions like user registration. The data collected is then processed by backend applications such as CGI, ASP Script, or PHP script.

CSS (Cascading Style Sheets): It is a language for styling documents written in markup languages. It's mainly used to define the visual style of web pages and user interfaces. While most commonly applied to HTML and XHTML documents, CSS can be used with other XML documents as well. It helps in creating visually engaging webpages and interfaces, applicable across various media including speech and mobile applications.

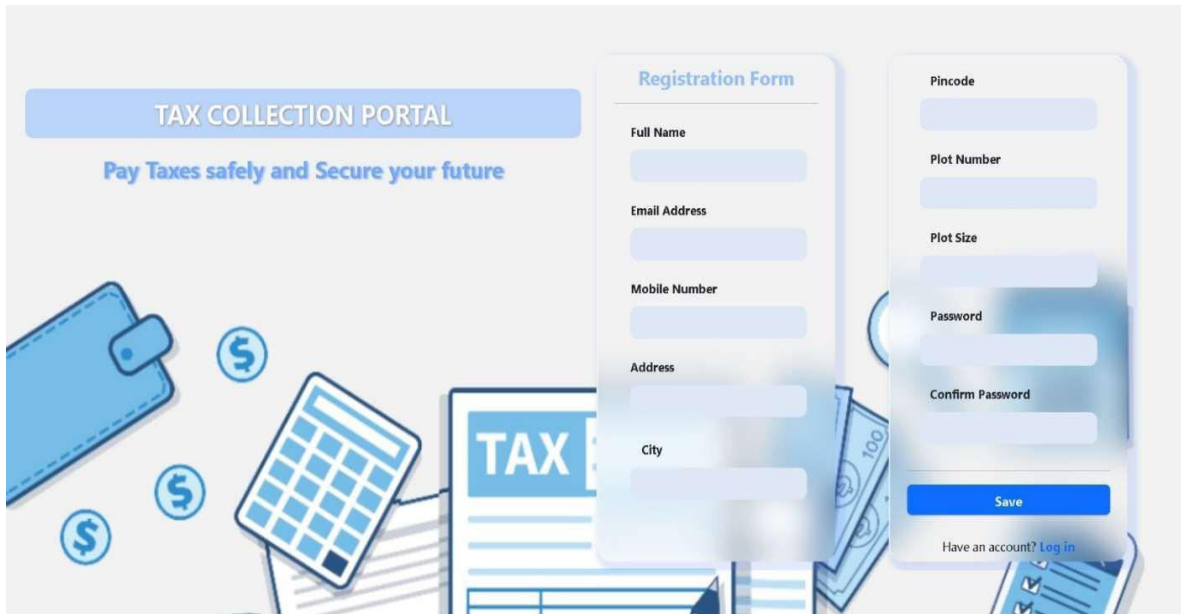
JavaScript: JavaScript, often shortened to JS, is a versatile programming language crucial for web content development. Alongside HTML and CSS, it's one of the core technologies for web content engineering. JavaScript makes web pages dynamic and interactive, facilitating the development of online programs and games. Virtually all modern web browsers support JavaScript without additional plug-ins, thanks to built-in JavaScript engines.

PHP (Hypertext Preprocessor): It is a server-side scripting language integrated with HTML. It's widely used for managing dynamic content, databases, and session tracking, and even for building e-commerce websites. PHP interacts with various databases like MySQL, PostgreSQL, and Oracle, performing system functions and handling forms to gather and process data.

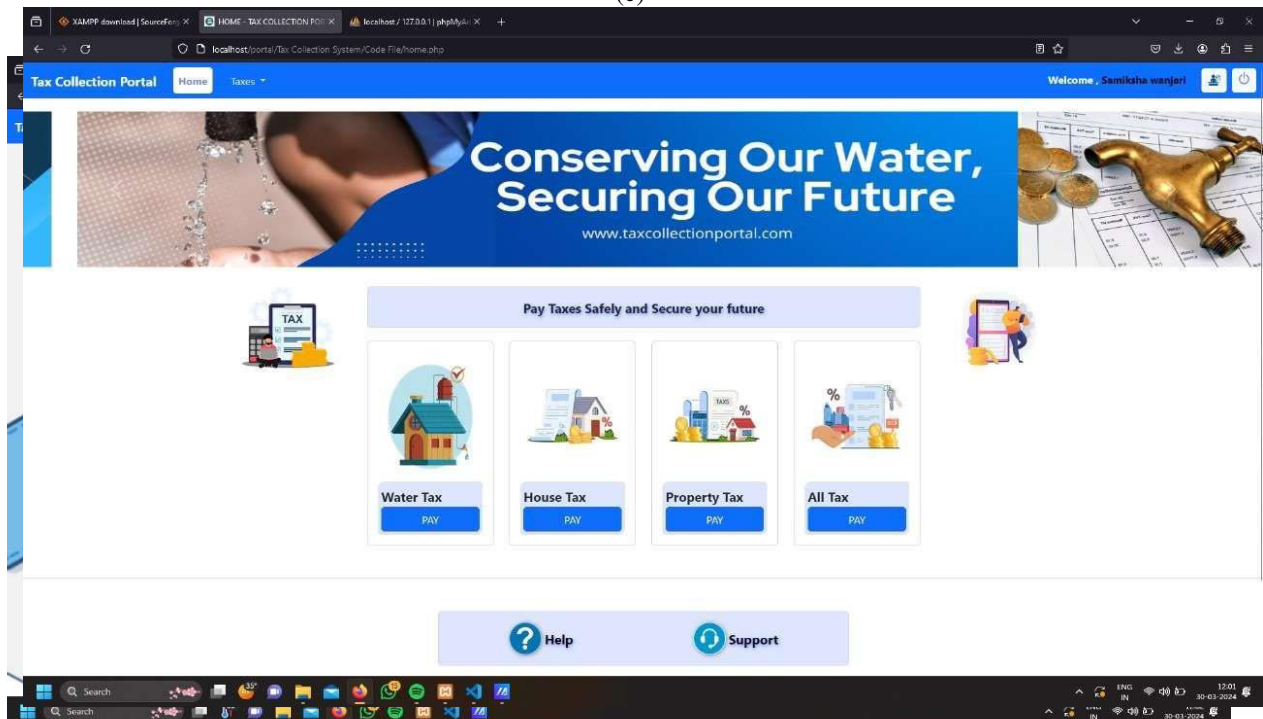
XAMPP: It is a popular software package for setting up a PHP development environment. It simplifies the deployment of web services by providing all necessary software components. XAMPP includes an AMP stack (Apache, MySQL, PHP, and Perl) along with administrative tools like PhpMyAdmin and FileZilla FTP server. It's commonly used for testing PHP pages and managing MySQL databases locally before deploying them to live servers.

IV. EXPERIMENTAL RESULTS

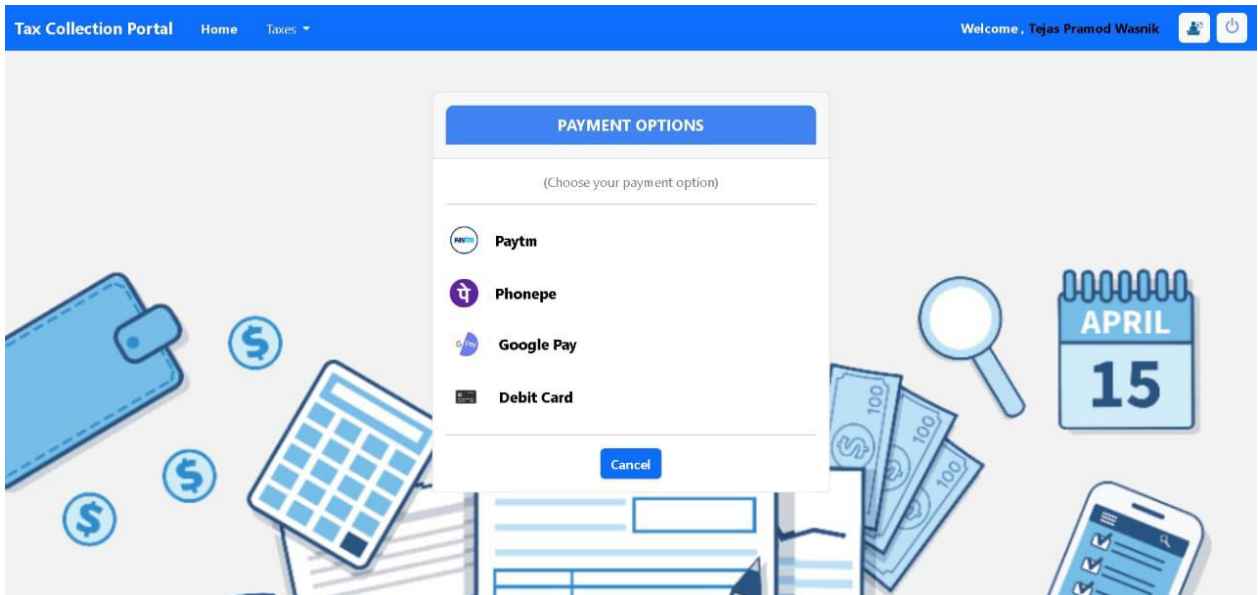
Figures shows the results of Administrative Tax Collection System web application developed in this term. Figs.(c), (d), (e),(f),(g),(h),(i) shows the original image. In this fig (c) describes the Registration page and fig (d) describes main menu from which user can choose their tax payment. Furthermore, fig (e) all tax invoice. Also, fig (f) describes the payment options and fig. (g) shows the payment conformation and at last fig. (h) shows the payment successfully done.Z



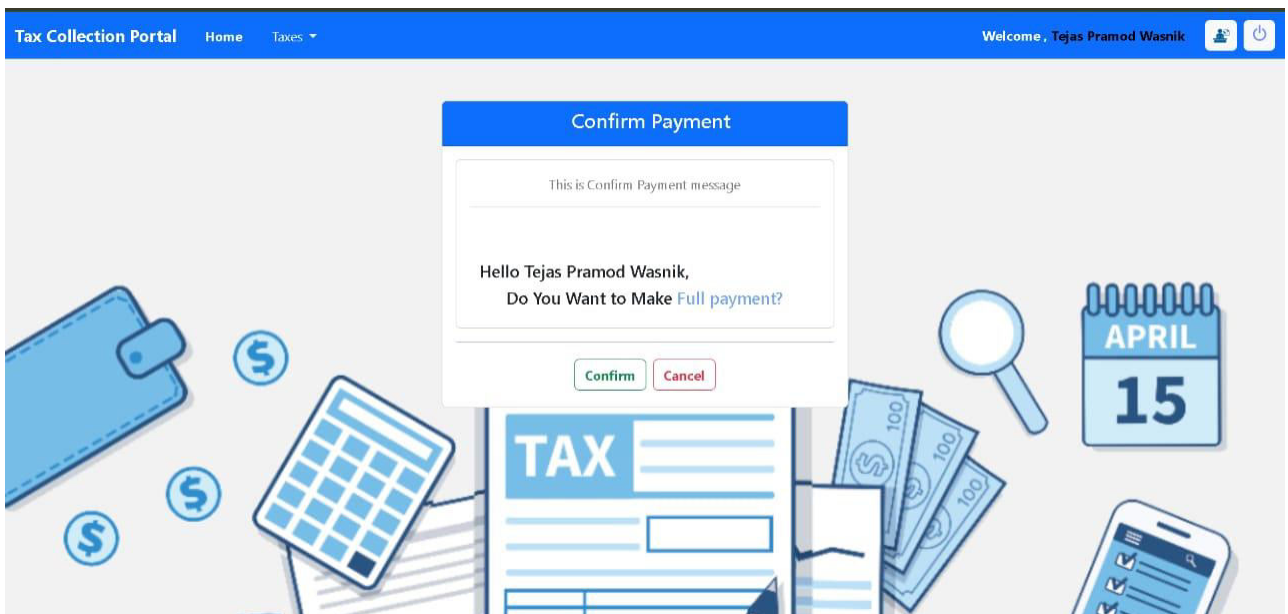
(c)



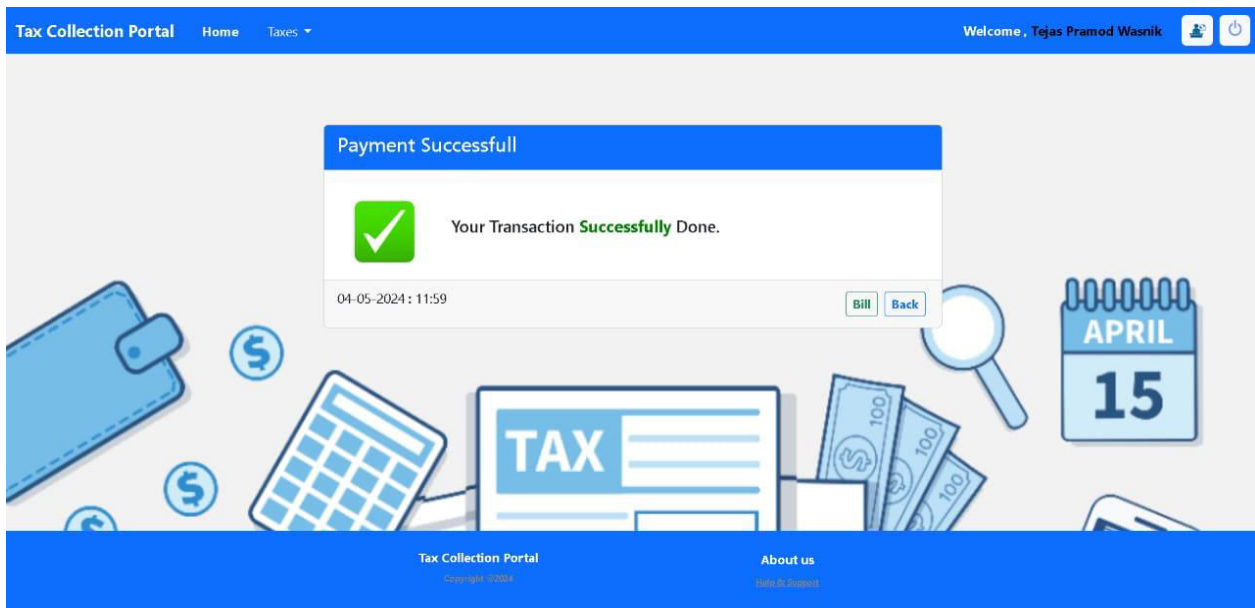
(d)



(e)



(f)



(g)

V. CONCLUSION

The local administration's tax collection portal has been launched successfully, offering users a streamlined and effective way to settle their taxes. This platform comes with useful features like integrated payment options and automatic invoice generation for different tax types such as water, property, and land taxes. After thorough development and testing, the portal guarantees reliability, safety, and ease of use. By incorporating multiple payment methods, users can now make transactions smoothly, improving their overall experience. In summary, the tax collection portal project has met its goals by modernizing tax collection procedures, making it more convenient for users, and contributing to better financial management for local administration.

REFERENCES

- [1] Chen Liuhong "Research on Tax Collection and Administration Application and Legal Issues Based on Big Data Analysis", (2022).
- [2] Ying Wang and Pan Wang "New Personal Tax Collection Management System Based on Artificial Intelligence and Its Application in the Middle Class". Published under licence by IOP Publishing Ltd, (2020).
- [3] Mihuandayani, Ema Utami "Design Concept Integration Tax Payment System with Implementing Financial Technology", Published Online in MECS (<http://www.mecspress.org/>), (September 2018).
- [4] Onuri Ernest, E. Faroun, Fikayo Erhinyeme, Ogheneovo Jegede Ayodeji "Design and development of an e-taxation system", <https://www.researchgate.net/publication/305426367>, (2015)
- [5] states Pratap Ranjan Jena, Manish Gupta "Revenue Efforts of Panchayats: Evidence from Four states", in Economic and Political Weekly · July 2008.
- [6] Anjali Kumari Local taxes, fees contribute 1.1% to Panchayats' total revenue: RBI report, (2024).
- [7] X. Meng and X. Ci, "Big data management: concepts, techniques and challenges," Journal of Computer Research and Development, vol. 25, no. 2, pp. 96–102, 2013.



INTERNATIONAL
STANDARD
SERIAL
NUMBER
INDIA



INTERNATIONAL JOURNAL OF INNOVATIVE RESEARCH

IN SCIENCE | ENGINEERING | TECHNOLOGY

 9940 572 462  6381 907 438  ijirset@gmail.com



www.ijirset.com

Scan to save the contact details