



e-ISSN: 2319-8753 | p-ISSN: 2347-6710

IJRSET

International Journal of Innovative Research in
SCIENCE | ENGINEERING | TECHNOLOGY



INTERNATIONAL JOURNAL OF INNOVATIVE RESEARCH


IN SCIENCE | ENGINEERING | TECHNOLOGY

Volume 13, Issue 5, May 2024

ISSN INTERNATIONAL
STANDARD
SERIAL
NUMBER
INDIA

Impact Factor: 8.423

 9940 572 462

 6381 907 438

 ijirset@gmail.com

 www.ijirset.com

Education Ecosystem for Specially Abled Students

Vimala Devi R¹, Bhuvan S², Manju M K³, Murali C⁴

Assistant Professor, Department of Information Science and Engineering, S J C Institute of Technology,
Chickaballapur, Karnataka, India¹

U.G. Student, Department of Information Science and Engineering, S J C Institute of Technology, Chickaballapur,
Karnataka, India^{2,3,4}

ABSTRACT: The COVID-19 pandemic has greatly impacted the education system leading to a disruption in traditional schooling for students. Certain institutions such as schools for specially abled students (disabilities) have shifted towards distance learning during this time. For instance visually impaired students are unable to access visual content through the distance learning system thus requiring audio descriptions to understand the material. Similarly deaf students are unable to access audio content and require captions on the screen to understand. This study seeks to achieve an inclusive learning experience for all students regardless of their abilities.

KEYWORDS: traditional schooling, blind students, audio descriptions, deaf students, captions, distance learning, e-learning, online learning platform

I. INTRODUCTION

In today's age of technological advancement and educational progress, the development of inclusive online learning platforms has become a promising prospect for students with disabilities. This opening paves the way for examining "Possible Path to Progress" a web-based learning system created to empower students with disabilities by providing them opportunities to receive quality education.

1.1 Overview: "Possible Path to Progress" is envisioned as a pioneering online learning platform tailored to meet the unique needs of students with disabilities. Leveraging cutting-edge technology and inclusive design principles, the platform aims to create an accessible and supportive learning environment where every student can thrive academically and personally.

1.2 Problem Statement: Individuals with disabilities frequently face considerable obstacles when attempting to access educational materials and opportunities. Traditional Learning environments may not provide the necessary adjustments and assistance resulting in unequal academic accomplishments and restricted personal development. This issue highlights the crucial requirement for all-encompassing virtual learning platforms that account for the varied requirements of students with disabilities.

1.3 Objective: The main goal of the "Possible Path to Progress" is to bridge the accessibility gap in education and empower specially abled students to achieve their utmost capabilities. By providing customized educational opportunities, adaptable technologies and all-inclusive assistance the platform strives to promote diversity encourage academic achievement and improve the overall welfare for specially abled students.

II. LITERATURE SURVEY

The literature survey for the "Possible Path to progress" online learning platform for students with special needs explores current studies concepts and most effective techniques in the realms of comprehensive education online instruction and the study of disabilities. Through the amalgamation of pertinent sources this inquiry strives to guide the creation of the platform and establish a theoretical structure for comprehending the complexities and possibilities of catering to students with disabilities in onlinel learning environments.

2.1 Inclusive Education and Disability Rights:

Inclusive education is grounded in the principles of equity, diversity, and social justice, aiming to provide all students, including those with disabilities, with meaningful learning opportunities within mainstream educational settings (UNESCO, 2009).

The United Nations Convention on the Rights of Persons with Disabilities (UNCRPD) and other international frameworks emphasize the right to inclusive education and call for the removal of barriers to accessibility and participation in educational settings (UN, 2006).

2.2 Challenges Faced by Students with Disabilities in Education:

Students with disabilities encounter various barriers to accessing educational resources and opportunities, including physical, attitudinal, and systemic barriers (Oliver, 2013).

The digital divide exacerbates inequalities in education, as students with disabilities may face challenges in accessing online learning materials and platforms that are not designed with their needs in mind (Margolin, 2017).

2.3 Benefits of Online Learning for Students with Disabilities:

Online learning offers several potential benefits for students with disabilities, including flexibility, personalized pacing, and access to a wide range of resources and assistive technologies (Burgstahler, 2015). Research suggests that online learning environments can enhance engagement and self-efficacy among students with disabilities, leading to improved academic outcomes and increased satisfaction with the learning experience (Grant & Drummond, 2019).

2.4 Inclusive Design Principles for Online Learning:

Inclusive design principles focus on creating products and environments that are accessible, usable, and inclusive of diverse users, including those with disabilities (Society for Human Resource Management, 2020). Key principles of inclusive design include flexibility, simplicity, perceptibility, and tolerance for error, all of which contribute to creating barrier-free online learning experiences (Microsoft, n.d.).

2.5 Accessibility Standards and Guidelines:

Web Content Accessibility Guidelines (WCAG) provide internationally recognized standards for web accessibility, offering guidance on making web content perceivable, operable, understandable, and robust (W3C, 2018).

Compliance with WCAG standards is essential for ensuring that online learning platforms are accessible to students with disabilities and conform to legal requirements and industry best practices.

III. METHODOLOGY

The Online Learning Platform for Students with Disabilities meets WCAG (Web Content Accessibility Guidelines), facilitating easy retrieval of students profiles and learning outcomes. It supports lifelong learning, especially for students with disabilities, and operates with high educational standards. The platform streamlines course management for teachers, enabling customization for students with disabilities and access to tailored electronic media archives.

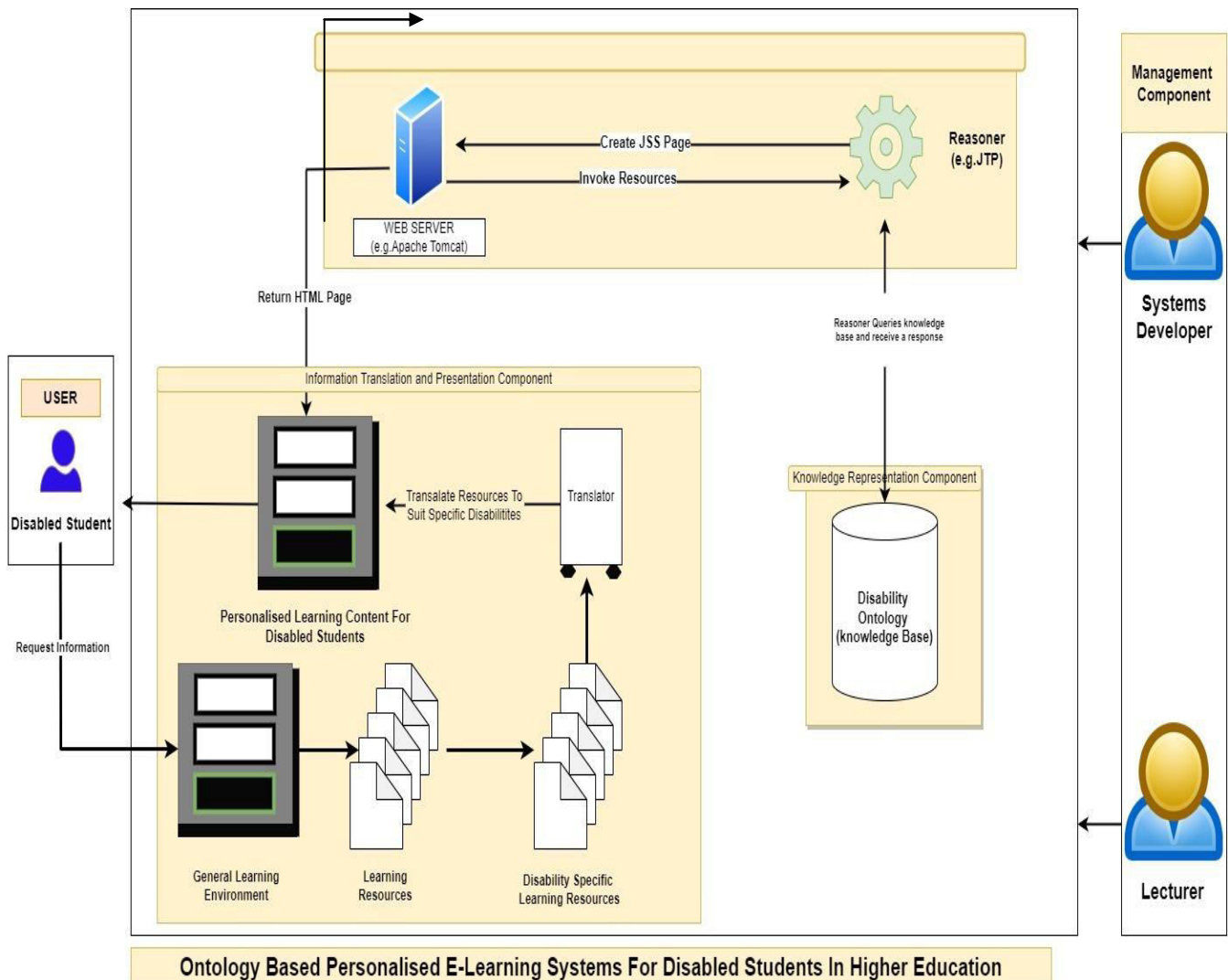


Fig.3.1: System Architecture

The architecture of the proposed “Possible Path to Progress” online learning platform is designed to prioritize accessibility, scalability, and flexibility. The proposed system will be built on a modular architecture, allowing for easy integration of new features and scalability to accommodate future growth. Key components of the architecture include:

3.1 Frontend Interface: The frontend interface will provide a user-friendly and accessible interface for students with disabilities to access course materials, engage in discussions, and interact with instructors and peers.

3.2 Backend Infrastructure: The backend infrastructure will consist of servers, databases, and application logic responsible for managing user accounts, storing course content, and facilitating communication between users.

3.3 Accessibility Layer: An accessibility layer will be integrated into the frontend interface to ensure compliance with accessibility standards such as WCAG, providing support for screen readers, keyboard navigation, and other assistive technologies.

3.4 Integration with Assistive Technologies: The platform will be designed to seamlessly integrate with assistive technologies commonly used by students with disabilities, ensuring compatibility with screen readers, speech recognition software, and alternative input devices.

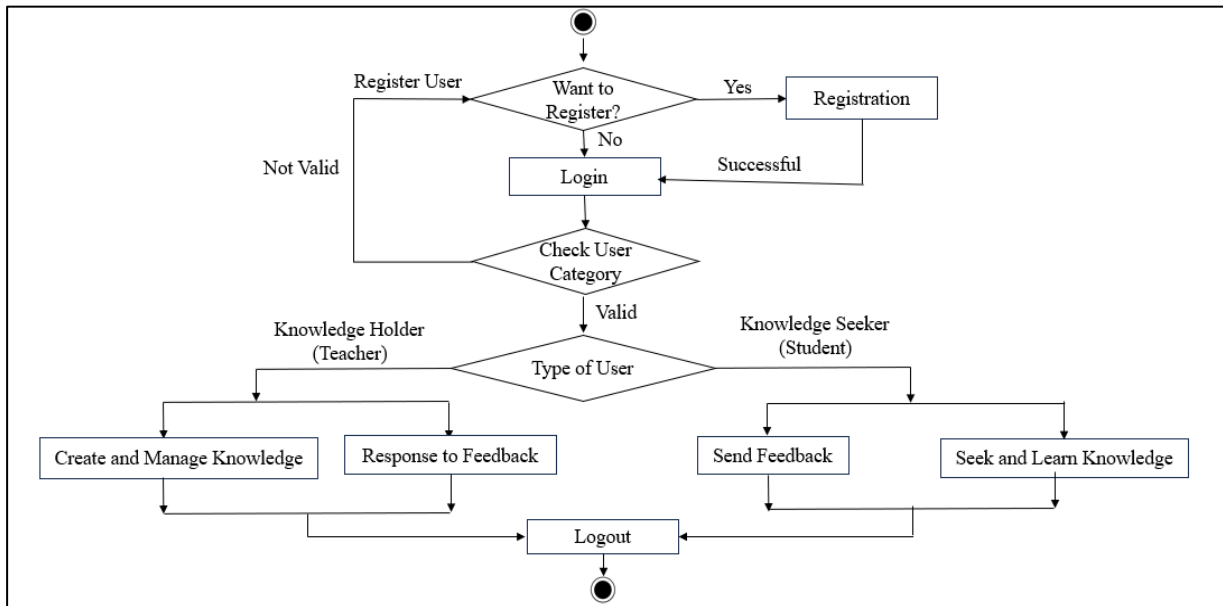


Fig.3.2: Flow Chart

IV. IMPLEMENTATION

Algorithm used in each module: The implementation of the "Possible Path to Progress" online learning platform will involve the utilization of various algorithms to facilitate the functionality of each module. The choice of algorithms will be based on factors such as efficiency, scalability, and suitability for the specific tasks at hand. Examples of algorithms that may be used in each module include:

4.1 User Authentication and Authorization:

Authentication Algorithm: Secure hashing algorithms such as bcrypt or SHA-256 may be used to securely hash and store user passwords, ensuring the confidentiality and integrity of user credentials.

Authorization Algorithm: Role-based access control (RBAC) algorithms may be employed to determine user permissions and access levels based on their roles within the system.

4.2 Course Management:

Content Recommendation Algorithm: Collaborative filtering algorithms or content-based filtering algorithms may be used to recommend courses to users based on their interests, previous course enrollments, and demographic information.

4.3 Accessibility Features:

Screen Reader Compatibility Algorithm: HTML markup and ARIA (Accessible Rich Internet Applications) attributes may be used to ensure compatibility with screen readers, providing semantic information and structural cues for assistive technologies.

4.4 Keyboard Navigation Algorithm: JavaScript event handling algorithms may be implemented to enable keyboard navigation and focus management, allowing users to navigate through interactive elements using keyboard shortcuts.

4.5 Text-to-Speech Algorithm: Text-to-speech (TTS) algorithms such as Google Text-to-Speech or Amazon Polly may be integrated to provide speech synthesis capabilities, converting text-based content into audible speech for users with visual impairments.

V. RESULTS

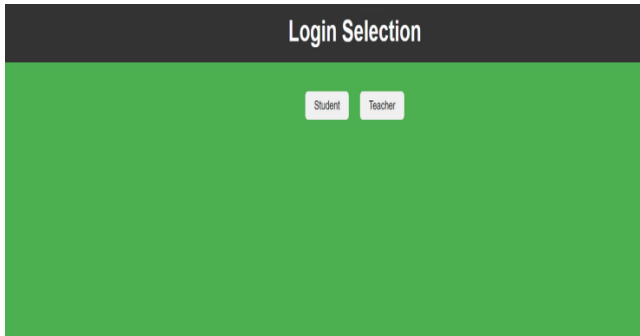


Fig.5.1: Login Selection Page

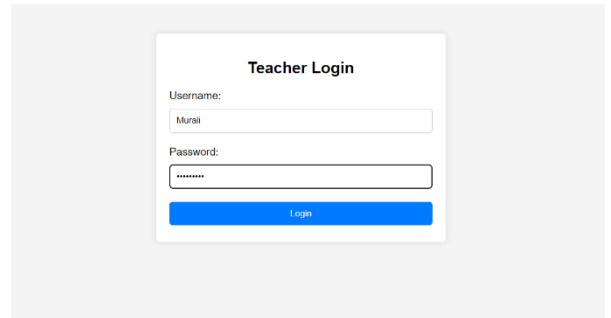


Fig.5.2: Teacher Login Page

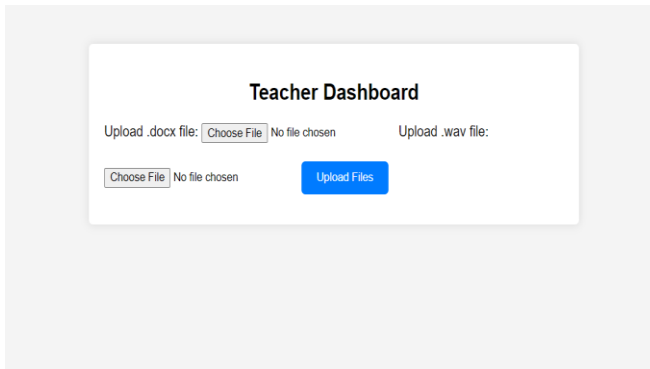


Fig.5.3: Teacher Dashboard

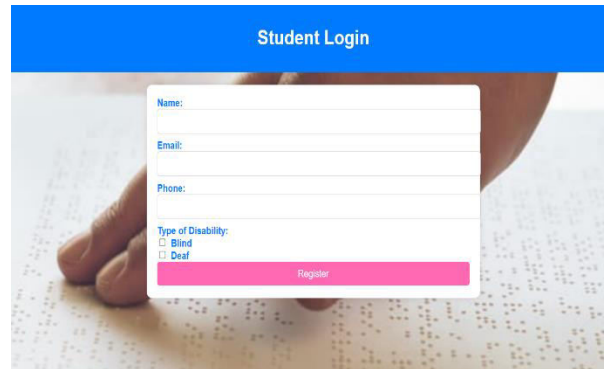


Fig.5.4: Student Login Page

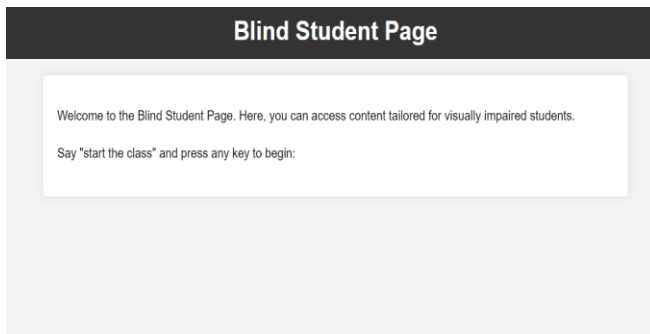


Fig.5.5: Blind Student Page

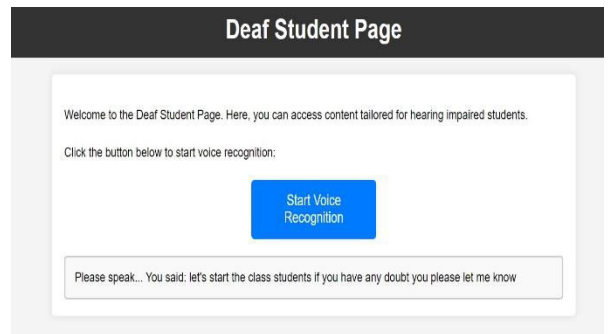


Fig.5.6: Deaf Student Page

VI. CONCLUSIONS

The development of the "Possible Path to Progress" online learning platform represents a significant milestone in the pursuit of inclusive education and empowerment for students with disabilities. Through a rigorous process of analysis, design, implementation, and testing, the platform has been meticulously crafted to provide an accessible, flexible, and supportive learning environment where every student can thrive academically and personally.

Throughout the project, a deep commitment to inclusivity and accessibility has been at the forefront, guiding every decision and action. By prioritizing the needs of students with disabilities and incorporating robust accessibility features, the platform aims to break down barriers to education and foster a culture of equal opportunity and engagement.

As we reflect on the culmination of this project, it is clear that the impact extends far beyond the confines of a digital platform. The "Possible Path to Progress" platform has the potential to transform lives, opening doors to new opportunities, fostering independence, and nurturing the potential of every student, regardless of their abilities or circumstances.

In closing, the development of the "Possible Path to Progress" platform represents a testament to the power of technology, innovation, and inclusivity to drive positive change in education. As we celebrate this milestone, let us remain steadfast in our commitment to creating a more inclusive and equitable world, one where every individual has the opportunity to realize their full potential and contribute to a brighter future for all.

REFERENCES

1. Y. Huang, Y. Xie, Y. Qiu, Q. Yuan, Y. Liu and H. Zhong, "Research on Support Services of MOOC-Based Online Teacher Professional Development During the COVID-19 Pandemic," 2020 Ninth International Conference of Educational Innovation through Technology (EITT), 2020, pp. 52-57, doi: 10.1109/EITT50754.2020.00015.
2. Nikhil Jain, Manya Goyal, Agravi Gupta, Vivek Kumar, SPEECH TO TEXT CONVERSION AND SENTIMENT ANALYSIS ON SPEAKER SPECIFIC DATA, Volume:03/Issue:06/June-2021.
3. T. Rohloff, K. von Schmieden and C. Meinel, "Students' Satisfaction of a Design Thinking MOOC with Personalized Learning Objectives," 2020 IEEE Learning With MOOCS (LWMOOCS), 2020, pp. 37-41, doi: 10.1109/LWMOOCS50143.2020.9234349.
4. C. A. Murenin and M. H. N. Tabrizi, "Development of usable and accessible Web-portals using W3C standards," International Conference on Information Technology: Coding and Computing (ITCC'05) - Volume II, 2005, pp. 829-831 Vol. 2, doi: 10.1109/ITCC.2005.129.
5. M. Tollefsen and T. Ausland, "A practitioner's approach to using WCAG evaluation tools," 2017 6th International Conference on Information and Communication Technology and Accessibility (ICTA), 2017, pp. 1-5, doi: 10.1109/ICTA.2017.8336047.
6. Web Content Accessibility. Retrieved December 2021 from the World Wide Web: <https://cantangroup.com/accessibility/achecks/>.
7. R. Bavani, Azizah Jaafar and N. F. Mohd Yatim, "A study on web experience among visually impaired users in Malaysia," 2010 International Conference on User Science and Engineering (i-USER), 2010, pp. 11-15, doi: 10.1109/IUSER.2010.5716714.
8. W. Namsiripongpan, Universal Foundation for Persons with Disabilities. Retrieved December 2021 from the World Wide Web: <https://forallcenter.org/index.php/aboutus/history/>.
9. N. Sirilertworakul, National Science and Technology Development Agency. Retrieved June 2022 from the World Wide Web: <https://nstda.or.th>.
10. M. Lu, H. Zhao, Y. Guo, K. Wang and Z. Huang, "A Review of the Recent Studies on MOOCs," 2018 13th International Conference on Computer Science & Education (ICCSE), 2018, pp. 1-5, doi: 10.1109/ICCSE.2018.8468793.
11. T. Rohloff, K. von Schmieden and C. Meinel, "Students' Satisfaction of a Design Thinking MOOC with Personalized Learning Objectives," 2020 IEEE Learning With MOOCS (LWMOOCS), 2020, pp. 37-41, doi: 10.1109/LWMOOCS50143.2020.9234349.
12. Y. Huang, Y. Xie, Y. Qiu, Q. Yuan, Y. Liu and H. Zhong, "Research on Support Services of MOOC-Based Online Teacher Professional Development During the COVID-19 Pandemic," 2020 Ninth International Conference of Educational Innovation through Technology (EITT), 2020, pp. 52-57, doi: 10.1109/EITT50754.2020.00015.
13. M. A. Trpkovska, L. A. Bexheti and B. Cico, "Enhancing flipped classroom model implementation," 2017 6th Mediterranean Conference on Embedded Computing (MECO), 2017, pp. 1-4, doi: 10.1109/MECO.2017.7977138.
14. Bergmann, J., & Sams, A. (2012). Flip your classroom: Reach every student in every class every day. Eugene, Or: International Society for Technology in Education.
15. M. Tollefsen and T. Ausland, "A practitioner's approach to using WCAG evaluation tools," 2017 6th International Conference on Information and Communication Technology and Accessibility (ICTA), 2017, pp. 1-5, doi: 10.1109/ICTA.2017.8336047.



INTERNATIONAL
STANDARD
SERIAL
NUMBER
INDIA



INTERNATIONAL JOURNAL OF INNOVATIVE RESEARCH

IN SCIENCE | ENGINEERING | TECHNOLOGY

 9940 572 462  6381 907 438  ijirset@gmail.com



www.ijirset.com

Scan to save the contact details