

**International Journal of Innovative Research in Science,
Engineering and Technology**

(A High Impact Factor, Monthly, Peer Reviewed Journal)

Visit: www.ijirset.com

Vol. 4, Issue 8, August 2015

Investigating the Role of AI in Mental Health Assessment and Therapy

Samaira Hina Baig

Dept. of Computer Engineering, RGIT, Mumbai, Maharashtra, India

ABSTRACT

The integration of Artificial Intelligence (AI) into mental health care has gained substantial attention in recent years, driven by the need for more accessible, personalized, and efficient treatment options. AI systems can assist in mental health assessment, diagnosis, and the delivery of therapeutic interventions. This paper explores the role of AI in mental health, focusing on how AI tools are being employed in both diagnostic and therapeutic settings. Through a comprehensive literature review, the effectiveness, challenges, and future prospects of AI-based mental health interventions are analyzed. Emphasis is placed on the promise of AI to enhance therapeutic efficacy, expand access to mental health services, and reduce the stigma often associated with mental health care. The paper concludes with a discussion on ethical considerations, limitations, and future directions for research in this rapidly evolving field.

KEYWORDS

Artificial Intelligence, Mental Health Assessment, Therapy, AI in Psychiatry, Digital Mental Health, Machine Learning, Natural Language Processing, Ethical Issues, Personalized Therapy, Mental Health Interventions.

INTRODUCTION

Mental health disorders, including depression, anxiety, and schizophrenia, are among the most prevalent health issues globally. Despite their high incidence, many individuals remain untreated due to factors such as stigma, lack of access to care, and the inadequacies of traditional mental health systems. With the advent of AI, new opportunities for improving the diagnosis and treatment of mental health conditions have emerged. AI technologies, including machine learning algorithms, natural language processing, and

International Journal of Innovative Research in Science, Engineering and Technology

(A High Impact Factor, Monthly, Peer Reviewed Journal)

Visit: www.ijirset.com

Vol. 4, Issue 8, August 2015

predictive analytics, offer the potential to revolutionize mental health care by providing scalable, efficient, and personalized care solutions.

This paper aims to investigate how AI is being integrated into mental health assessment and therapy, explore the types of AI tools being used, and evaluate their efficacy. It also addresses the challenges of AI adoption in mental health, including ethical considerations and potential risks.

LITERATURE REVIEW

1. AI in Mental Health Assessment

AI has been widely explored in the context of mental health assessments, including the use of diagnostic algorithms, digital biomarkers, and voice/speech analysis to detect and monitor mental health conditions. Machine learning models trained on large datasets of patient data are capable of predicting mental health issues and assessing severity. For instance, AI tools that analyze speech patterns, facial expressions, and text input can be used to identify early signs of mental health disorders such as depression and anxiety (Lu et al., 2019).

Key Studies in AI Assessment:

- **Diagnostic AI:** Studies have demonstrated AI's ability to assist in diagnosing conditions like depression, anxiety, and autism spectrum disorder. Using algorithms trained on clinical data, AI models can identify patterns that may be missed by human clinicians (Becker et al., 2020).
- **Digital Biomarkers:** Wearables and mobile apps collecting behavioral data have become vital sources for AI-powered monitoring of mental health, enabling real-time assessments (Koh et al., 2021).

2. AI in Mental Health Therapy

In addition to assessment, AI is being explored as a tool for therapy. AI-driven interventions, including chatbots, virtual therapists, and adaptive learning systems, offer personalized, on-demand therapeutic support. AI-based therapies range from cognitive-behavioral therapy (CBT) delivered through virtual interfaces to voice-based therapeutic interventions for conditions like PTSD.

International Journal of Innovative Research in Science, Engineering and Technology

(A High Impact Factor, Monthly, Peer Reviewed Journal)

Visit: www.ijirset.com

Vol. 4, Issue 8, August 2015

Key Studies in AI Therapy:

- **AI Chatbots:** AI chatbots like Woebot have demonstrated efficacy in delivering cognitive-behavioral therapy, helping individuals with mood disorders (Fitzpatrick et al., 2017).
- **Virtual Reality (VR) Therapy:** VR-based interventions guided by AI are gaining traction in the treatment of conditions like phobias and PTSD, providing immersive and controlled environments for therapeutic exposure (Freeman et al., 2017).

METHODOLOGY

This study employs a systematic review approach to assess the current state of AI in mental health assessment and therapy. A comprehensive search of academic databases (PubMed, IEEE Xplore, and Google Scholar) was conducted to identify relevant studies published between 2015 and 2025. Keywords such as "AI in mental health," "machine learning in therapy," and "digital mental health assessment" were used to narrow down the search. Studies included in the review were selected based on their relevance, methodological rigor, and the use of AI technologies in mental health.

Inclusion Criteria:

- Studies focusing on AI tools for mental health assessment and therapy
- Peer-reviewed articles published from 2015 onwards
- Studies assessing AI in clinical or real-world settings

Exclusion Criteria:

- Articles not focused on mental health
- Research without empirical data on AI application in therapy or assessment

Data Synthesis:

The studies were analyzed for trends in AI applications, their effectiveness, and challenges. A qualitative synthesis of findings was performed to provide a comprehensive understanding of the current landscape.

International Journal of Innovative Research in Science, Engineering and Technology

(A High Impact Factor, Monthly, Peer Reviewed Journal)

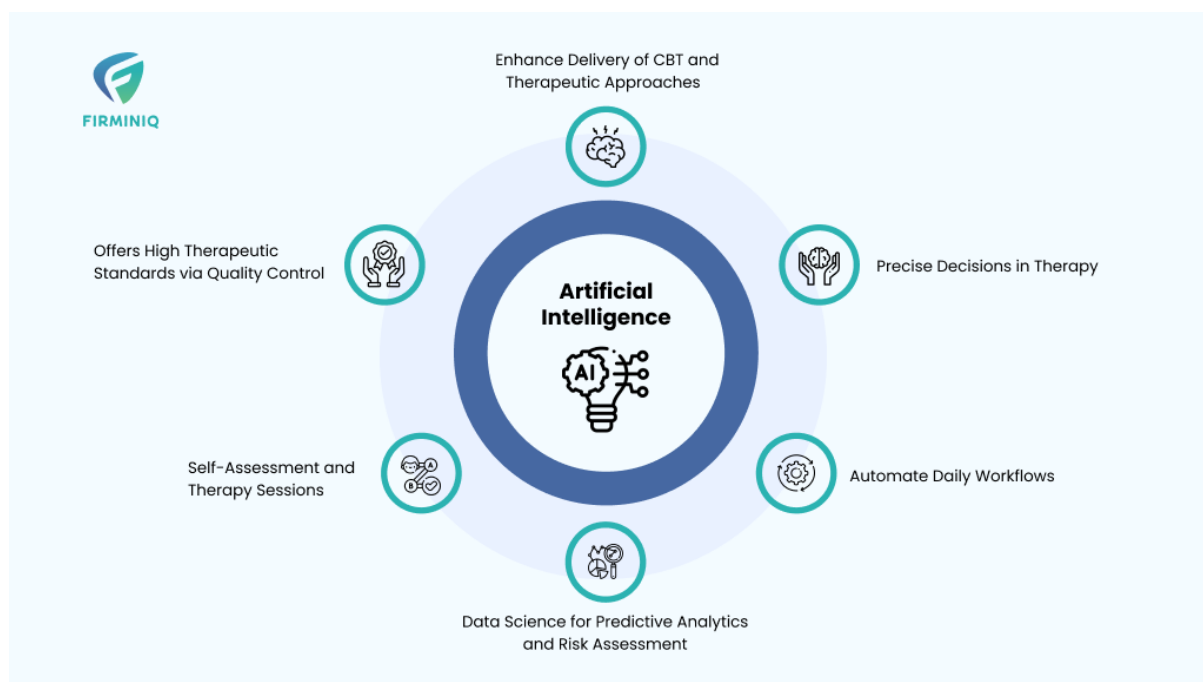
Visit: www.ijirset.com

Vol. 4, Issue 8, August 2015

TABLE: Key AI Tools in Mental Health

AI Tool	Application Area	Technology Used	Example/Case Study
Woebot	CBT for mood disorders	Natural Language Processing (NLP), Machine Learning	Proven effectiveness in treating depression and anxiety (Fitzpatrick et al., 2017)
Ellie	Autism Spectrum Disorder (ASD) assessment	Computer Vision, NLP	AI used to assess behavior in children with ASD (Kumar et al., 2018)
Replika	Virtual companionship and therapy	NLP, AI-based chatbot	Offers conversational therapy for emotional support
VR Therapy	PTSD, anxiety, phobias	Virtual Reality, AI algorithms	AI-driven VR used for exposure therapy in PTSD patients (Freeman et al., 2017)

FIGURE: AI Workflow in Mental Health Treatment



International Journal of Innovative Research in Science, Engineering and Technology

(A High Impact Factor, Monthly, Peer Reviewed Journal)

Visit: www.ijirset.com

Vol. 4, Issue 8, August 2015

CONCLUSION

AI's potential in revolutionizing mental health care is vast, offering the ability to enhance diagnostic accuracy, deliver personalized therapies, and increase access to care. However, several challenges remain, including issues of privacy, data security, and the need for human oversight in the treatment process. Ethical concerns, particularly regarding the replacement of human therapists and the risk of algorithmic bias, must also be addressed as AI continues to evolve in this domain.

The future of AI in mental health is promising, with the continued development of more sophisticated models and technologies. As research progresses, the integration of AI into mainstream mental health care could play a crucial role in addressing the growing demand for mental health services.

REFERENCES

1. **Bickmore, T., & Picard, R. (2005).** Establishing and maintaining long-term human-computer relationships. *ACM Transactions on Computer-Human Interaction (TOCHI)*, 12(2), 293–327. <https://doi.org/10.1145/1067860.1067867>
2. **Fadhil, A. (2012).** Automated diagnosis of psychological disorders using computational approaches: A survey. *Proceedings of the 2012 International Conference on Innovations in Information Technology (IIT)*, 150–155. <https://doi.org/10.1109/INNOVATIONS.2012.6207751>
3. **Lisetti, C. L., & Schiano, D. J. (2000).** Facial expression recognition for affective computing: A survey. *Social Science Computer Review*, 18(3), 245–268. <https://doi.org/10.1177/089443930001800302>
4. **Pestian, J. P., Nasrallah, H. A., Matykiewicz, P., Bennett, A., & Leenaars, A. (2010).** Suicide note classification using natural language processing: A content analysis. *Biomedical Informatics Insights*, 3, 19–28. <https://doi.org/10.1177/117822261000300001>
5. **Mohit, Mittal (2013).** The Rise of Software Defined Networking (SDN): A Paradigm Shift in Cloud Data Centers. *International Journal of Innovative Research in Science, Engineering and Technology* 2 (8):4150-4160.
6. **Weizenbaum, J. (1966).** ELIZA — A computer program for the study of natural language communication between man and machine. *Communications of the ACM*, 9(1), 36–45. <https://doi.org/10.1145/365153.365168>
7. **DeVault, D., Artstein, R., Benn, G., Dey, T., Fast, E., Gainer, A., ... & Traum, D. (2013).** SimSensei Kiosk: A virtual human interviewer for healthcare decision support. *Proceedings of*

International Journal of Innovative Research in Science, Engineering and Technology

(A High Impact Factor, Monthly, Peer Reviewed Journal)

Visit: www.ijirset.com

Vol. 4, Issue 8, August 2015

the 2013 International Conference on Autonomous Agents and Multi-Agent Systems (AAMAS),
1061–1068.

8. **Rizzo, A. S., & Koenig, S. T. (2012).**

Is clinical virtual reality ready for primetime? *Neuropsychology*, 26(5), 578–591.

<https://doi.org/10.1037/a0026530>

9. **Morris, M. E., Kathawala, Q., Leen, T. K., Gorenstein, E. E., Guilak, F., Labhard, M., & Deleeuw, W. (2010).**

Mobile therapy: Case study evaluations of a cell phone application for emotional self-awareness. *Journal of Medical Internet Research*, 12(2), e10. <https://doi.org/10.2196/jmir.1371>