

# International Journal of Innovative Research in Science, Engineering and Technology

(An ISO 3297: 2007 Certified Organization)

Vol. 4, Special Issue 6, May 2015

## Automated Identification of Skin Cancer Based on Texture Characteristics

B.Gohila Vani<sup>#1</sup>, A.Selvaraj<sup>#2</sup>,

PG Scholar, Department of CSE, Anna University, Muthayammal Engineering College, Namakkal, India

Assistant Professor, Department of CSE, Anna University, Muthayammal Engineering College, Namakkal, India

**ABSTRACT:** Skin cancer is the most dangerous cancer. Almost 65% of Melanoma skin cancer is predictable to UV injury done by revelation to the sun, much of which may not be simply apparent. An automatic examination to approximate a patient's risk of melanoma took by standard digital camera due to dermatologists cost for detecting patient. To separating among benign and malignant tumor is a challenging level for skilled specialists. In Proposed method, automated diagnosis system is suitable device to identify tumor. Generally, the method leads by pre-processing affected area of the skin, i.e. with a reduction of undesired articles such as moles, shadowing properties or hair. Then, it performs a segmentation to identify the lesion limitations. In conclusion, lesion is predictable on the image portion, several features are removed and a classification is processed. We calculate these segmentation effects to categorize which methods have more exact results, and converse how these results may guidance in the following phases: the feature extraction and the classification of skin affected area. It recognizes the texture distinctiveness skin injury segmentation and probabilistic neural network classification applied in skin lesions accuracy.

**KEYWORDS:** Texture distinctiveness skin injury segmentation, Feature Extraction, Probabilistic Neural Network classification.

### I. INTRODUCTION

Skin is the most commonly used primary in research of human image processing with uses from face tracing, analysis of signal, and subject formed image retrieval systems to altered human communications. MELANOMA is the peak deadly skin cancer, with an probable 76 690 people being analyzed with melanoma and 9480 people dead of melanoma in the United States in 2013 [7]. In the United States, the lifetime hazard of receiving melanoma is 1 in 49 [7]. Melanoma details for almost 75% of deaths linked with skin cancer [8]. It is melanocytes malicious tumor and commonly occurs on the trunk or lower restrictions [9]. Separate methods for segmentation, classification and feature extraction connected to the analysis of distortions. Numerous features have been removed from skin images, including color, shape, border and surface properties. Classification methods and support vector machines are collected from investigation to neural networks. Maglogianetal is consumed for analysis of the formal of the art of computer idea system for skin lesion categorization. These approaches are mainly established for images attained by epiluminescence microscopy (Dermoscopy) and attention on discriminating reasons melanocytic nevi (moles) from melanoma. Sections of skin images spent in this work is unquestionably important (as malignant melanoma is one of the skin cancer with the highest death), in the "real-world" the popular of lesions offering to dermatologists for valuation protected by this thin surface. Most structures overlook other benign lesions and significantly the two greatest common form of skin cancer (Squamous Cell Carcinomas and Basal Cell Carcinomas).

The significant role is to motivation on 5 common modules of skin lesions: Basal Cell Carcinoma (BCC), Squamous Cell Carcinoma (SCC), Actinic Keratosis (AK), Melanocytic Nevus / Mole (ML), Seborrheic Keratosis (SK). Furthermore, we usage only suitable resolve color images accomplished using standard camera (non-Dermoscopy). In the pre-processing manner canny edge detection is consumed to identify the edge outside in an image. It is occupied to eliminate the spontaneous pixels exterior. Then the edge pixels are recognized and further enlarged using a dilation process to acquire the optimum non-smooth surfaces. The image pixel demonstrations in appropriate color space are the main step in skin separation methods. Skin presence in image color can also be affected by

# International Journal of Innovative Research in Science, Engineering and Technology

(An ISO 3297: 2007 Certified Organization)

Vol. 4, Special Issue 6, May 2015

background image, clarification, and individualities of camera. A huge measure of classifier groupings has been suggested the patterns for linking their structural design. These separate classifiers in the hierarchical design are united into an arrangement, which is linked to a decision tree classifier. The advantage of this design is the high effectiveness and elasticity in misusing the discriminant power of dissimilar kinds of structures and so improving the recognition correctness. The method used in our investigation drops within the classified model. Our process separates the classification task into a fixed of reduced classification complication equivalent to the splits in the classification hierarchy. Every of these subtasks is considerably simpler than the single task, since the nodes are categorized in the hierarchy only separate between a smaller measure of classes. Therefore, it may be feasible to spread the smaller quantity of classes with greater accuracy.

The decrease in the feature space avoids many complications linked to extraordinary dimensional feature spaces are trouble. The key theory of feature selection is to select a subcategory of input features by removing features with little or no projecting data. Every classifier practices a dissimilar set of features enhanced for those images. This forces the exclusive classifiers to hold potentially autonomous evidences. Methodical classifiers are well recognized and frequently used for classification with the methodical KNN classifier.

To level a blaring image, median filtering can be functional with a  $3 \times 3$  pixel window. This resource that the each pixel value in the blaring image is tested, along with the principles of its together eight neighbors. Allowing to size these nine numbers are then measured and the middle is particular as the value for the pixel in the original image. As the  $3 \times 3$  window is stimulated one pixel at a time across the blaring image, and the clarified image is established and Fig.1 shows the workflow of programmed recognition of skin affected area.

Its general workflow of spontaneous system for skin lesions is presented in Fig.1. In Section II, we define the image preprocessing, and its compact shading exteriors. In Section III, we define the process of Segmentation, where image illustration are produced and later used to distinct between well and lesion surfaces. In section IV, we clarify how to define the features according to the skin lesions principles, where quantifiable illustration for the lesion surfaces gets produced. The classifier is used in the features in Section V, where generating estimation if the lesion is ordinary or cancerous. The cancer skin lesions recognized by using Probabilistic Neural Network classifier. In section VI, are illustrative about the Investigational results and conclusion described in Section VII.

Block Diagram:

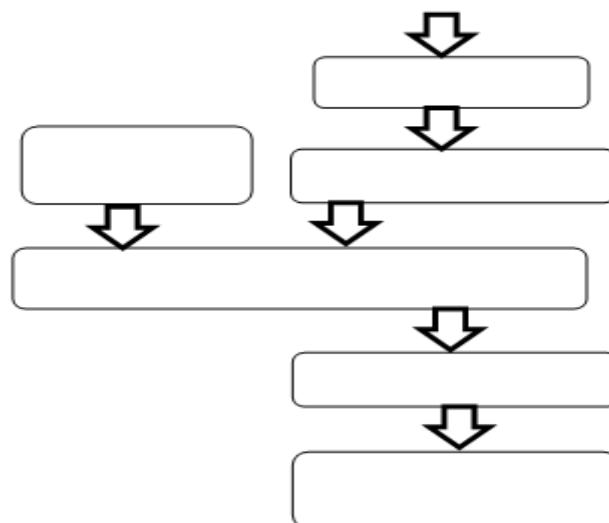


Fig. 1 workflow of automatic diagnosis of melanoma.

# International Journal of Innovative Research in Science, Engineering and Technology

(An ISO 3297: 2007 Certified Organization)

Vol. 4, Special Issue 6, May 2015

## II. PREPROCESSING

### An Introduction to Preprocessing

As declared before, the given image may be concerned by illumination artifacts, and if used to straight in the process of segmentation, shading and lesion regions could be disordered. Therefore, shading is reduced in the input earlier image segmentation. Skin lesions mostly happen on curved outsides (e.g. arms, hands, faces, etc.), and the illumination differences locally due to the exterior curvature, producing shading effects. A smoothly deepening external is accessible as one that is turning left from the sight direction.

We practice shape in shading ideas [5,6] to renew the image (instead of defining the clarification variation by a morphological terminating operation) [4]. In image processing, the low level procedures involve primitive processes reduce noise, contrast development, and image improving. The preprocessing comprises two steps. They are

### A. Dilation

Dilation has two basic functions in the surface of mathematical morphology. The simple outcome of the operator on a binary image is to regularly expand boundaries surface of foreground pixels. Thus surface of background pixels develop in size while holes inside those areas become compact. The given image which is to be extended and the set of coordinate points known as a Structuring part. In this structuring part that regulates the precise properties of the dilation on the given image, as seen in Fig. 2.

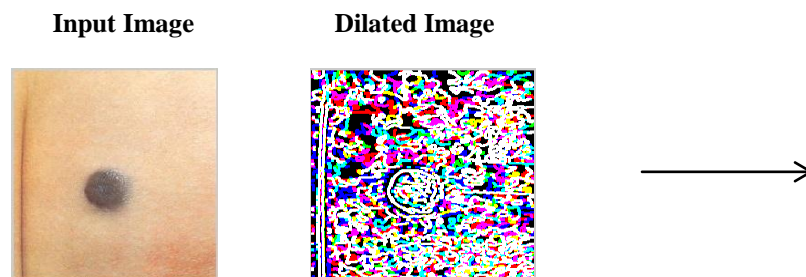


Fig. 2 Dilation applied in the given input image.

### B. Canny Edge Detection

#### a) Edge

Edges are those places in an image that agree to object borders. Edges are pixels where image illumination variations sharply. An edge is a thing involved to an individual pixel and is planned from the image purpose activities in a neighborhood of the pixel.

#### b) Edge Detection

Edge data in an image is formed by detecting at the connection a pixel has with its neighborhoods. If pixels gray-level value is associated to those everywhere it, there is perhaps not an edge at that fact. If pixels have neighbors with usually changing gray levels, it may current an edge point.

#### c) Steps in Edge Detection

- Filtering-filter image to develop performance of the edge detector
- Enhancement-Emphasize pixels having important variation in local intensity
- Detection-To identify edges
- Localization-To Locate edge accurately in image, approximation edge orientation

# International Journal of Innovative Research in Science, Engineering and Technology

(An ISO 3297: 2007 Certified Organization)

Vol. 4, Special Issue 6, May 2015

## d) Edge Detection operator (Canny edge detection)

It is best edge detection method. The Canny Edge Detection block discovers edges by observing for the local maxima of the slope of the image. It estimates the slope using derived of the gaussian filters. The canny method practices strong and weak edges thresholds to be detected. As a result, the system is more forceful to noise, and more likely to identify true weak edges. Noise is filtered out-usually a gaussian filter is routine. Width is selected carefully. Edge strength is created out by removing the slope of the given input image, as seen in Fig .3.

### Input Image Edge Detected Image

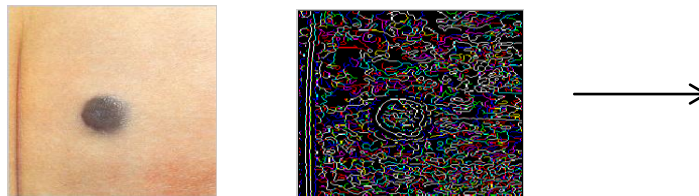


Fig. 3 Canny Edge Detection applied in the given input image.

## III. IMAGE SEGMENTATION

### An Introduction to Segmentation

Image segmentation is the process of separating a digital image into several segments. The aim of the image segmentation is to make simpler or variation the demonstration of an image into approximately that is more significant and easier to evaluate. It is normally used to discover objects and image boundaries (lines, curves, etc.) in images and managed of transfer a label to each pixel in an image such that pixels with the similar label segment definite structures. It is conditions to the parting of an image into regions that are similar with respect to selected resources such as brightness, texture, color etc., and methods can be characterized in to clustering, morphological detection, Histogram thresholding, Region based detection, Edge based detection, active contours etc., [2]. A great of combination scale however outcomes in huge faults along in the texture limitations due to the ambiguity presented by the large spaces. However, for arbitrary texture limitations, the faults along limitations can be huge even when the total segmentation presentation is good. Algorithms of texture based segmentation have been used to dermoscopy images. Algorithms for proposed textural lesion segmentation contain first-order region statistics [14], gray-level co-occurrence matrix [13], and Markov random field models [12].

The algorithm of TDLS (Texture Distinctiveness Lesion Segmentation) contains of two processes. First, a set of sparse texture distributions that describes lesion and skin textures are well-informed. A TD (Texture Distinctiveness) metric is calculated to amount the difference of a texture distribution from all other distributions of texture. Second, the TD metric is functioned to categorize regions in the image as part of the skin or lesion in the image [1]. To absorb the distinctiveness distributions of texture in image and scheduled the TD metric. Remaining algorithms of sparse texture used sparse texture models for classification or segmentation of images with altered texture patterns. Sparse texture models find a lesser number of texture symbols, such as texture areas, to describe a whole image [10].

There are many approaches to captivate the model, including grouping or by communicating the difficult as an optimization difficult [11]. To build are levied probability model by assumed  $m$  pixels from every region and to get the spatial relationship, we take for every texture area a window as a template. For particular  $m$  pixels, we describe their distance to a region of texture as the least mean square distance among those pixels and the pattern. Using these distances of regions of segmented, it forms are fined probability model for every texture area as in the first step. These probability models are thoughtful to arrangements and thus should create more accurate area boundaries than those created on the spectral histograms. The enhanced lesion image is disjointed into a huge quantity of regions. This early over segmentation is combined to raise the TDLS algorithm's power is to noise. Also, it decides for the procedure of an operative and fast algorithm of classification to originality which exteriors fit to the lesion or skin class. The initial over segmentation algorithm is altered from the (SRM) statistical region merging [15] algorithm. The key variance is that

# International Journal of Innovative Research in Science, Engineering and Technology

(An ISO 3297: 2007 Certified Organization)

Vol. 4, Special Issue 6, May 2015

the algorithm of SRM operations the image in the RGB color space, while the TDLS algorithm clarifies into the XYZ color space, as seen in Fig. 4.



Fig. 4 Segmentation applied in the given input image.

## IV. FEATURE EXTRACTION

Texture is that property of all exteriors that defines visual forms, each having characteristics of homogeneity. It holds main information about the structural procedure of the exterior, such as; clouds, leaves, bricks, fabric, etc. It also defines the relationship of the area to the nearby environment. The texture things contain coarseness, Directionality, Contrast, Roughness and Regularity. Texture is categorized by the spatial spreading of gray levels in a neighborhood. For ideal classification resolves, what concern are the statistical methods of representation. This is because it is these methods that outcomes in calculating texture properties.

### 6.3.3.1 Co-occurrence Matrix

These co-occurrence matrices characterize the spatial distribution and the requirement of the gray levels within a limited surface.

Every (i, j) entry in the matrices, characterises the probability of accepted from one pixel with a grey level of 'i' to another level 'j' under a predefined angle and distance. From these settings, sets of statistical approaches are considered, called as feature vectors. The co-occurrence matrix is made, assembled on the distance and orientation between image pixels. Then important statistics are detached from the conditions as the texture demonstration. The texture types are:

- Energy
- Contrast
- Correlation
- Homogeneity
- Entropy

**Energy:** It is a gray-scale image texture quantity of homogeneity altering, reflecting the spreading of image gray-scale regularity of capacity and texture.

$$E = \sum_{x,y} p(x,y)^2$$

P(x, y) is the (Gray Level Co-occurrence Matrix) GLCM

**Contrast:** Contrast is the key diagonal close the moment of inactivity, which amount the importance of the matrix is dispersed and images of limited differences in number, reflecting the image clearness and texture of shadow depth.

$$I = \sum \sum (x-y)^2 p(x,y)$$

**Entropy:** It procedures image texture uncertainty, when the space co-occurrence matrix for all principles are equal, it realized the minimum value.

$$S = -\sum_{x,y} p(x,y) \log p(x,y)$$

**Correlation Coefficient:** Procedures the joint probability incidence of the identified pixel pairs.

# International Journal of Innovative Research in Science, Engineering and Technology

(An ISO 3297: 2007 Certified Organization)

Vol. 4, Special Issue 6, May 2015

$$\sum (\sum ((x - \mu_x) (y - \mu_y) p (x, y) / \sigma_x \sigma_y))$$

**Homogeneity:** Methods the nearness of the scattering of elements in the GLCM to the GLCM diagonal.

$$\sum (\sum (p (x, y) / (1 + |x - y|)))$$

Here, skin lesions are characterized by their texture and color. Color features are described by the mean color  $sk = (\mu_R, \mu_G, \mu_B)$  of the lesion and their covariance matrices. Four normalization techniques were examined to decrease the mechanism of lighting, which were functional early take color types.

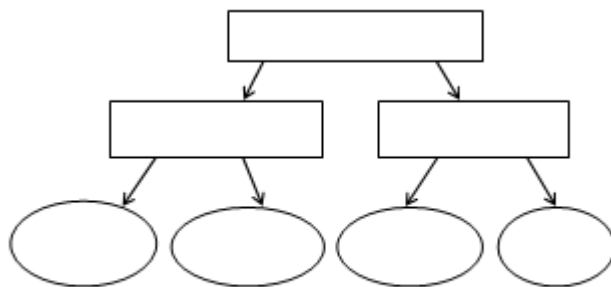


Fig. 5 Hierarchical organization of our skin lesion

Standardized every color module by separating each color component by the regular of the same component of the healthy skin of the same persistent and it had best performance compared to the other normalization method. Texture features are removed from generalized co-occurrence matrices that are the delay of the co-occurrence matrix to multispectral input images, as seen in Fig. 5.

## V. CLASSIFICATION

The feature extraction step induced in 55 features, which are hypothetically suitable in choosing a benign from a malignant lesion. Not all structures are similarly appreciated for this classification due to, e. g., laying-off or irrelevance. [4]. Neural networks are predictive models insecurely based on the deed of biological neurons. Neural network is the exceptional tool in recognition and discrimination between dissimilar sets of signals. General Regression Neural Networks (GRNN) and Probabilistic Neural Network (PNN) have like architectures, but there is a essential difference: Probabilistic networks perform classification where the target variable is definite, whereas general regression neural networks make regression where the objective variable is continuous. If select a PNN/GRNN network, it will impulsively choose the correct type of network based on the type of target variable.

All PNN networks contain four layers. The input layer is one neuron in the input layer for each interpreter variable. In the case of certain variables,  $N-1$  neurons are used where  $N$  is the quantity of classifications. The input neurons (or processing before the input layer) regularize the variation of the values by removing the median and separating by the interquartile range. The input neurons then feed the principles to every of the neurons in the hidden layer as the hidden layer. It has one neuron for every case in the training data set. The neuron stores the principles of the predictor variables for the case along with the objective value.

When accessible with the  $x$  vector of input values from the input, a hidden neuron computes the Euclidean distance of the test case from the neuron's center point and then relates the kernel function using the sigma value(s). The causing value is agreed to the neurons in the pattern layer or summation layer. It is certain target grouping of every training case is deposited with every hidden neuron. The weighted importance coming out of a hidden neuron is provided for only to the pattern neuron that agrees to the hidden neuron's classification is decision layer.

Although the application is very dissimilar, probabilistic neural networks are theoretically like to K-Nearest Neighbor (KNN) models. The simple idea is that a expected target value of an item is possible to be approximately the same as other items that have close principles of the predictor variables. A probabilistic neural network constructs on this foundation and streamlines it to reflect all of the other points.

# International Journal of Innovative Research in Science, Engineering and Technology

(An ISO 3297: 2007 Certified Organization)

Vol. 4, Special Issue 6, May 2015

There are 6 stages elaborated in the proposed model which initial from the facts input to output. The proposed model needs changing the image into a format skilled of being operated by the computer.

The images are altered into matrices form by using MATLAB. It is usually much faster and more exact to train a PNN/GRNN network perform than a multilayer perceptron network. It is comparatively impermeable to outliers (wild points) and created accurate expected target probability scores. It is like to Bayes optimal classification.

## VI. EXPERIMENTAL RESULTS

The algorithms of segmentation are related to manually segmented ground truth. The algorithms are associated visually and by computing sensitivity, specificity, and accuracy of the algorithm to suitably classify every pixel as normal skin or lesion. The metrics used to equate to the ground truth are sensitivity, specificity, and accuracy. Their formulas are given in [18], [19], and [20], where TP is the number of true positive pixels, FP is the number of false positive pixels, TF is the number of true negative pixels, and FN is the number of false negative pixels, as seen Region Of Curve (ROC) in Fig. 6.

$$\text{Sensitivity} = \frac{TP}{TP + FN} \quad [18]$$

$$\text{Specificity} = \frac{TN}{TN + FP} \quad [19]$$

$$\text{Accuracy} = \frac{TP + TN}{TP + FN + TN + FP} \quad [20]$$

TABLE II

SEGMENTATION ACCURACY RESULTS FOR MELANOMA LESION PHOTOGRAPHS

Segmentation Algorithm	Sensitivity	Specificity	Accuracy
L-SRM [18]	90.0%	92.5%	92.1%
Otsu-R [20]	87.4%	91.5%	90.3%
Otsu-RGB [12]	<b>92.2%</b>	85.5%	85.0%
Otsu-PCA [21]	81.2%	<b>99.5%</b>	97.6%
TDLS	90.8%	98.8%	<b>97.9%</b>

TABLE III

SEGMENTATION ACCURACY RESULTS FOR NONMELANOMA LESION PHOTOGRAPHS

Segmentation Algorithm	Sensitivity	Specificity	Accuracy
L-SRM [18]	88.7%	93.0%	92.6%
Otsu-R [20]	87.3%	78.7%	78.9%
Otsu-RGB [12]	<b>95.2%</b>	74.6%	75.0%
Otsu-PCA [21]	77.8%	<b>99.0%</b>	<b>98.7%</b>
TDLS	91.6%	99.1%	<b>98.7%</b>

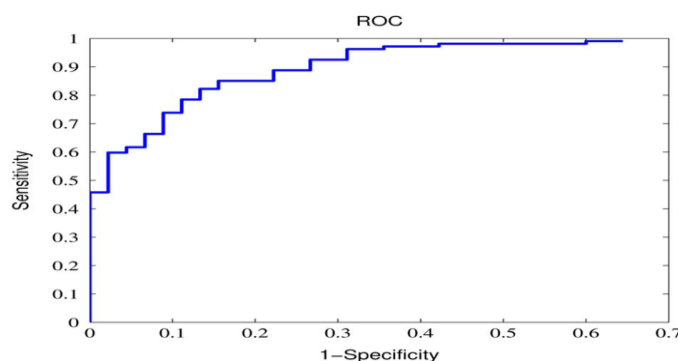


Fig. 6 ROC curve for the PNN classifier

# International Journal of Innovative Research in Science, Engineering and Technology

(An ISO 3297: 2007 Certified Organization)

Vol. 4, Special Issue 6, May 2015

## VI. CONCLUSION

This paper presented several skin classifiers for detecting the human skin cancer. There are numerous skin classifiers for identifying the human skin cancer. The preprocessing techniques are used in skin lesion images to eliminate noise by using edge detection and dilation. In this approach, is subjective by biological vision and to overcome the border problem in segmentation. Dilation used to gradually enlarge the boundaries of region of pixels. The canny edge detection is performed to remove the non-smooth regions and to reduce computational complexity. Detection skin cancer accurately by texture based segmentation is used. In the proposed system, segmentation and classification of skin lesion as cancerous or normal based on the texture features. It will improve the efficiency of early detection for skin cancer.

## REFERENCES

- [1] Jeffrey Glaister\*, Alexander Wong, and David A. Clausi, "Segmentation of Skin Lesions From Digital Images Using Joint Statistical Texture Distinctiveness," *IEEE Transactions On Biomedical Engineering*, Vol. 61, No. 4, pp.1220-1230, April.2014.
- [2] M. Celebi, H. Iyatomi, G. Schaefer, and W. V. Stoecker, "Lesion border detection in dermoscopy images," *Comput. Med. Imag. Graph.*, vol. 33, no. 2, pp. 148–153, 2009..
- [3] J. Alcon, C. Ciuhu, W. ten Kate, A. Heinrich, N. Uzunbajakava, G. Krekels, D. Siem, and G. De Haan, "Automatic imaging system with decision support for inspection of pigmented skin lesions and melanoma diagnosis," *IEEE J. Sel. Topics Signal Process.*, vol. 3, no. 1, pp. 14–25, Feb. 2009..
- [4] P. G. Cavalcanti and J. Scharcanski, "Automated prescreening of pigmented skin lesions using standard cameras," *Comput. Med. Imag. Graph.*, vol. 35, no. 6, pp. 481–491, Sep. 2011.
- [5] Shapiro L, Stockman G. Computer vision. Prentice Hall; 2001.
- [6] P.G.Cavalcanti PG, Scharcanski J, Lopes CBO. Shading attenuation in human skin color images. In: Proc., 6th., International Symposium on Visual Computing (ISVC., 2000), in press, doi:10.1007/978-3-642-17289-2 19.
- [7] N. Howlader, A. M. Noone, M. Krapcho, J. Garshell, N. Neyman, S.F. Altekruse, C. L. Kosary, M. Yu, J. Ruhl, Z. Tatalovich, H. Cho, A. Mariotto, D. R. Lewis, H. S. Chen, E. J. Feuer, and K. A. Cronin, "SEER cancer statistics review, 1975-2010," Nat. Cancer Inst., Bethesda, MD, USA, Tech. Rep., 2013.
- [8] A. F. Jerants, J. T. Johnson, C. D. Sheridan, and T. J. Caffrey, "Early detection and treatment of skin cancer," *Amer. Family Phys.*, vol. 62, no. 2, pp. 1–6, Jul. 2000.
- [9] Public Health Agency of Canada. (2013). Melanoma skin cancer. [Online]. Available: <http://www.phac-aspc.gc.ca/cd-mc/cancer/melanoma-skin-cancer-cancer-peaumelanome-eng.php>.
- [10] G. Peyre, "Sparse modeling of textures," *J. Math. Imag. Vis.*, vol. 34, no. 1, pp. 17–31, 2009.
- [11] J.-L. Starck, M. Elad, and D. Donoho, "Image decomposition via the combination of sparse representations and a variational approach," *IEEE Trans. Image Process.*, vol. 14, no. 10, pp. 1570–1582, Oct. 2005.
- [12] C. Serrano and B. Acha, "Pattern analysis of dermoscopic images based on Markov random fields," *Pattern Recog.*, vol. 42, no. 6, pp. 1052–1057, 2009.
- [13] A. P. Dhawan and A. Sim, "Segmentation of images of skin lesions using color and texture information of surface pigmentation," *Comput. Med. Imag. Graph.*, vol. 16, no. 3, pp. 163–177, 1992.
- [14] M. Silveira, J. Nascimento, J. Marques, A. R. S. Marcal, T. Mendonca, S. Yamauchi, J. Maeda, and J. Rozeira, "Comparison of segmentation methods for melanoma diagnosis in dermoscopy images," *IEEE J. Sel. Topics Signal Process.*, vol. 3, no. 1, pp. 35–45, 2009.
- [15] R. Nock and F. Nielsen, "Statistical region merging," *IEEE Trans. Pattern Anal. Mach. Intell.*, vol. 26, no. 11, pp. 1452–1458, Nov 2004.
- [16] DermQuest, (2012). [Online]. Available: <http://www.dermquest.com>.
- [17] J. Glaister, R. Amelard, A. Wong, and D. A. Clausi, "MSIM: Multi-stage illumination modeling of dermatological photographs for illumination corrected skin lesion analysis," *IEEE Trans. Biomed. Eng.*, vol. 60, no. 7, pp. 1873–1883, Jul. 2013.
- [18] M. Celebi, H. Iyatomi, G. Schaefer, and W. V. Stoecker, "Lesion border detection in dermoscopy images," *Comput. Med. Imag. Graph.*, vol. 33, no. 2, pp. 148–153, 2009.
- [19] B. Erkol, R. H. Moss, R. Joe Stanley, W. V. Stoecker, and E. Hvatum, "Automatic lesion boundary detection in dermoscopy images using gradient vector flow snakes," *Skin Res. Technol.*, vol. 11, no. 1, pp. 17–26, 2005.
- [20] M. E. Celebi, H. A. Kingravi, H. Iyatomi, Y. A. Aslandogan, W. V. Stoecker, R. H. Moss, J. M. Malters, J. M. Grichnik, A. A. Marghoob, H. S. Rabinovitz, and S. W. Menzies, "Border detection in dermoscopy images using statistical region merging," *Skin Res. Technol.*, vol. 14, no. 3, pp. 347–353, 2008.