

# International Journal of Innovative Research in Science, Engineering and Technology

(An ISO 3297: 2007 Certified Organization)

Vol. 4, Special Issue 6, May 2015

## Plant Identification Using Leaf Images

Sachin D. Chothe<sup>1</sup>, V.R.Ratnaparkhe<sup>2</sup>

P.G. Student, Department of EE, Government College of Engineering, Aurangabad, Maharashtra, India<sup>1</sup>

Assistant Professor, Department of EE, Government College of Engineering, Aurangabad, Maharashtra, India<sup>2</sup>

**ABSTRACT:** This paper presents a computer based automatic plant identification system. Out of all available organs of plant, leaf is selected to obtain the features of plant. Five geometrical parameters are calculated using digital image processing techniques. On the basis of these geometrical parameters six basic morphological features are extracted. Vein feature as a derived feature is extracted based on leaf structure. At the first stage leaf images are obtained using digital scanner. Then above mentioned morphological features are extracted which act as input to the classification stage. Recognition accuracy of the proposed algorithm is tested. Accuracy of this algorithm is tested on two different databases and compared. False acceptance ratio and false rejection ratio for both databases is calculated. Total 12 kinds of plants are classified using this algorithm. Dataset consists of 92 images of total 12 plants. This method implements effective algorithm used for plant identification and classification as it is independent of leaf maturity. Proposed method is easy to implement and fast in execution.

**KEYWORDS:** Feature extraction, Plant identification, vein feature, false acceptance rate, false rejection rate.

### I. INTRODUCTION

Plants are important part of our ecosystem. There is huge number of plants existing in nature. Many of them are at the risk of extinction. So it is very necessary to catalogue their identity, features and useful properties. Also there are many medicinal plants which play an important role in Ayurveda. Now a day, whole world is facing various problems like global warming, biodiversity loss, effects of fast urban development, and various environmental damages. Hence there is an urgent need to apply advanced computer vision techniques to obtain the botanical knowledge like plant taxonomy, various features of plant and make this information accessible and useful to different kinds of people like researchers, farmers, botanists, and students [1]. Hence plant identification is the first and important task.

There are many plant organs like leaves, flowers, fruits, seeds which can be used for plant identification. In this paper leaves are selected to obtain the features of plant. Because leaf can be easily obtained and scanned and also it consists of more excluding information which is useful for plant classification. These leaf images are sent to computer and then by using image processing tools, leaf features are extracted to identify the plant.

Several methods have been introduced for plant identification. Many of them have selected leaf as characterizing organ. Some of them used shape description method while other deal with colour feature, texture features, vein structure, geometrical features etc. [2]. B.Wang et al. [3] propose shape descriptor method for online plant leaf identification working on mobile platform. They measured the convexity and concavity property of the arches of various levels and obtained the multilevel shape descriptor. S.G.Wu et al. [4] extracted 12 leaf features and orthogonalized them into 5 principal variables using Principal Component Analysis (PCA) and Probabilistic Neural Network (PNN) as a classifier.

To recognize the plant species J. Chaki et al. used Gabor Filter. Convolving Gabor filter with leaf images, real and imaginary parts of resultant signal are obtained [5]. Absolute difference between them is calculated which is used as feature value.

In this paper leaf identification algorithm is implemented by extracting the leaf features. Five geometrical parameters of each leaf image are calculated. Using these geometrical parameters six basic features is obtained. One derived feature which is vein feature is extracted. This paper uses Euclidean classifier to classify the leaf images. Advantage of using Euclidean classifier is that it is fast and easy to implement.

# International Journal of Innovative Research in Science, Engineering and Technology

(An ISO 3297: 2007 Certified Organization)

Vol. 4, Special Issue 6, May 2015

## II. SYSTEM METHODOLOGY

### A. Leaf Image Acquisition/ Database selection:

In this paper two database of leaf images are used. One directly obtained from [6]. Other one is created by taking leaves from trees available in college campus. All these leaves are scanned using digital scanner. Back side of leaves are used for scanning. As leaf images are scanned rather photographed, there is no problem of angle of photoing and lighting conditions. The overall flow diagram of proposed work is shown in Figure 1.

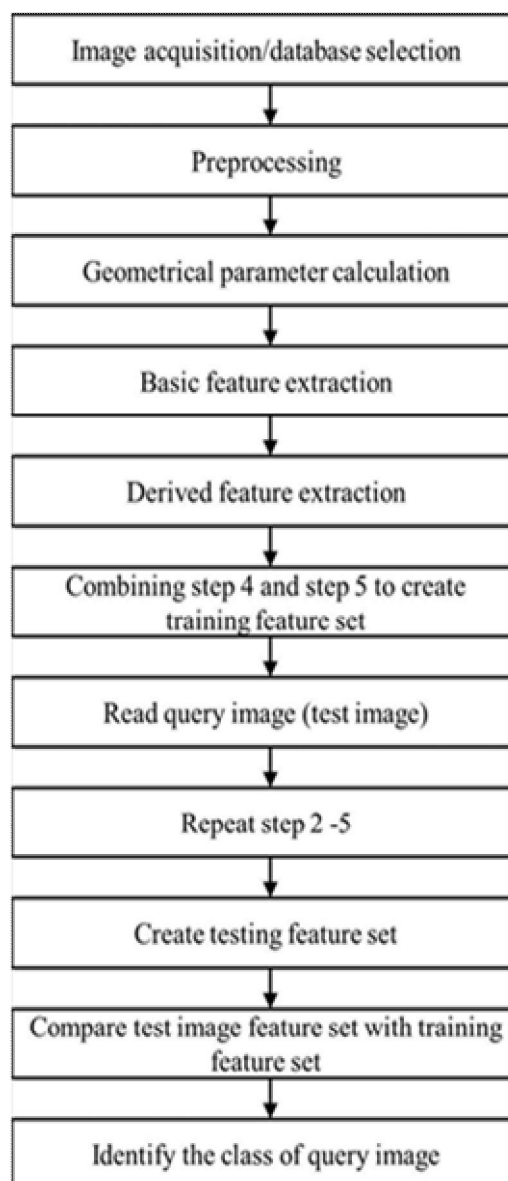


Fig. 2.1 Flow diagram of proposed work

### B. Preprocessing:

The leaf images obtained in database2 are color images. These RGB images are converted into gray scale. Obtained gray scale images are converted into binary by using appropriate level of thresholding. Median filtering is used to

## International Journal of Innovative Research in Science, Engineering and Technology

(An ISO 3297: 2007 Certified Organization)

Vol. 4, Special Issue 6, May 2015

reduce the effect of noise. Leaf contour is obtained by using boundary extraction algorithm. The flow diagram of pre-processing step is shown in Figure 2.

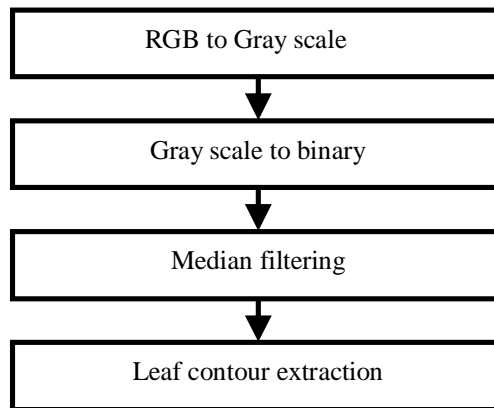


Fig. 2 Pre-processing step

### C. Geometrical parameter calculation:

In this technique five basic geometrical parameters are calculated. These are length, width, diameter, area and perimeter of leaf.

- 1) Length of leaf:  
It is defined as the distance between two extreme points on the main vein.
- 2) Width of leaf:  
It is defined as the length of minor axis of leaf contour.
- 3) Diameter:  
The diameter is defined as the longest distance between any two points on the margin of the leaf. [4]
- 4) Leaf area:  
Leaf area is calculated as counting the number of pixels having binary value 1 inside the leaf margin. [4]
- 5) Leaf perimeter:  
It is obtained by counting the number of pixels contributing margin of leaf.

### D. Basic feature extraction:

Using five geometrical parameters which are defined above, six basic morphological features are calculated.

- 1) Aspect ratio:  
It is defined as the ratio of length to the width of leaf. It is given as, [4]

$$\text{Aspect Ratio} = \frac{\text{Length}}{\text{Width}}$$

- 2) Form factor:  
Form factor is used to obtain the difference between circle and leaf. It is calculated as, [4]

$$\text{Form Factor} = \frac{4 \times \pi \times \text{Area}}{(\text{Perimeter})^2}$$

- 3) Rectangularity:  
Rectangularity feature is used to obtain the similarity between leaf and rectangle. It is calculated as, [4]

$$\text{Rectangularity} = \frac{\text{Length} \times \text{Width}}{\text{Area}}$$

## International Journal of Innovative Research in Science, Engineering and Technology

(An ISO 3297: 2007 Certified Organization)

Vol. 4, Special Issue 6, May 2015

4) Narrow factor:

It is defined as ratio of diameter to the length. It is given as, [4]

$$\text{Narrow Factor} = \frac{\text{Diameter}}{\text{Length}}$$

5) Perimeter ratio of diameter:

It is given as the ratio of leaf perimeter to its diameter. It is given as, [4]

$$\text{Perimeter Ratio of Diameter} = \frac{\text{Perimeter}}{\text{Diameter}}$$

6) Perimeter ratio of length and width:

It is given as the ratio of perimeter of leaf to the sum of its length and width. It is given as, [4]

$$\text{Perimeter Ratio of Length and Width} = \frac{\text{Perimeter}}{(\text{Length} + \text{Width})}$$

E. Derived feature extraction:

One derived feature is extracted named as vein feature. In this feature vein structure of leaf is obtained. Morphological opening is done on input image with disk-shaped structuring element of radius 1,2,3,4 sequentially. Then final obtained image is subtracted from input image. Here vein structure of leaf is obtained. Total number of white pixels in the vein structure is counted. Vein feature is obtained as the ratio of total number of white pixels in the vein structure to the area of leaf image. Vein feature is given as,

$$\text{Vein Feature} = \frac{\text{Number of White Pixels}}{\text{Area}}$$

In this way total seven features are extracted. These seven features are calculated for all training images and training feature set is created

F. Detection:

In detection step input query image that is test image is classified to appropriate class of tree. First query image is acquired then pre-processed it. Five geometrical parameters for this query image are calculated. Using these parameters six morphological features is obtained. Vein feature is calculated by obtaining vein structure of query image. Test feature set is created using extracted features. Euclidean classifier is used which is very simple to implement and fast as compare to other classifiers. Distance between training feature set and testing feature set is calculated. The tree for which minimum specified distance obtained, query image is classified to that particular tree.

### III. EXPERIMENTATIONS & RESULTS

Experiments are done on two types of database. One obtained from [6] and other which is created from plants available in college campus. First database contains 32 samples of 6 plants, named as b1 to b6. Each image is saved in a TIFF format. Second database contains 60 samples of 6 plants, named as c1 to c6. Each image is saved in a JPEG format. Training and testing data set of first database are shown below in Figure 1 and Figure 2. And of second database is in figure 3 and figure 4.

## International Journal of Innovative Research in Science, Engineering and Technology

(An ISO 3297: 2007 Certified Organization)

Vol. 4, Special Issue 6, May 2015

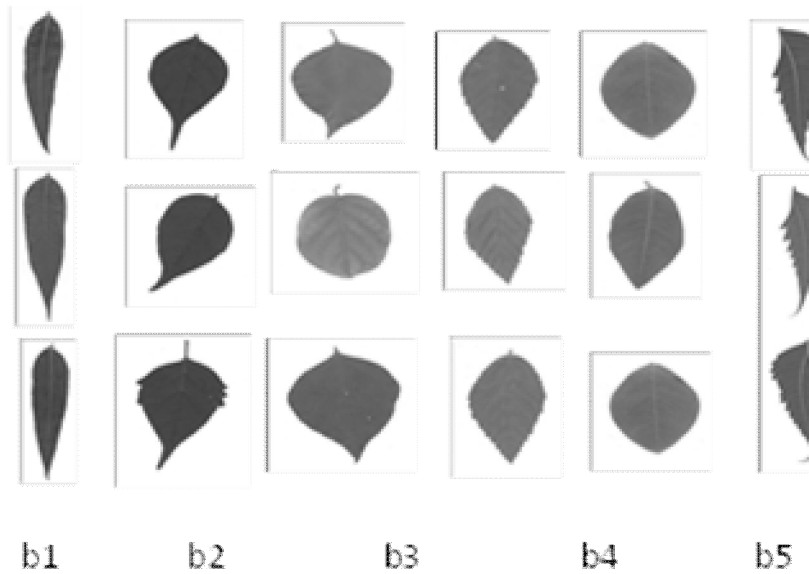


Fig. 3.1 Samples of Dataset1.

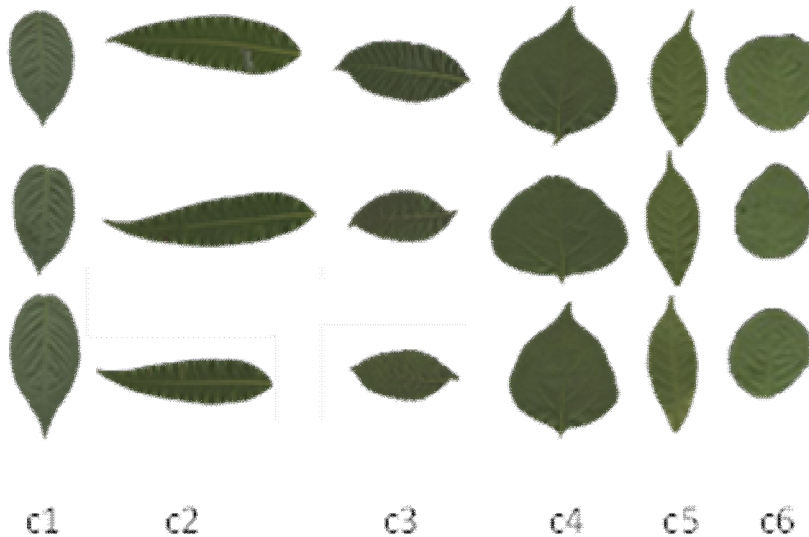


Fig. 3.4 Samples of Dataset2.

### G. Analysis:

From first database 2 leaf images per plant and from second database 3 leaf images per plant are used to obtain the accuracy of this algorithm. The accuracy obtained for first database is 78.12 % while for second database it is 85%. Some plants get less accuracy due to inter-species similarity and the intra-species variability and also due to the simplicity of algorithm. False Acceptance Rate and False Rejection Rate for Database1 and Database2 are as shown in TABLE I and TABLE II respectively. By observing both tables it is cleared that FAR and FRR values of Database2 are less than Database1.

# International Journal of Innovative Research in Science, Engineering and Technology

(An ISO 3297: 2007 Certified Organization)

Vol. 4, Special Issue 6, May 2015

TABLE I. FAR AND FRR FOR DATABASE1

Plant name	False Acceptance Rate (FAR) %	False Rejection Rate (FRR) %
b1	0	0
b2	50	66.66
b3	66.66	66.66
b4	50	66.66
b5	50	0
b6	0	10

TABLE II. FAR AND FRR FOR DATABASE2

Plant name	False Acceptance Ratio (FAR) %	False Rejection Ratio (FRR) %
c1	9.09	0
c2	0	10
c3	50	30
c4	0	0
c5	42.85	60
c6	0	10

## IV.CONCLUSION

This paper introduces statistical method approach for plant identification. Proposed method is verified for two databases consisting of total 12 plants. It uses Euclidean classifier for classifying leaf images. This method is easy to implement and fast in execution compared to other methods. Accuracy is moderate. Accuracy can be increased by adding more statistical features and using other advanced classifier. But due to this complexity of algorithm will increase and it will slow down the execution speed. So this method gives the optimum solution in between speed of recognition and accuracy.

## REFERENCES

1. O. Mzoughi, I. Yahiaoui, N. Boujemaa and E. Zagrouba, "Advanced tree species identification using multiple leaf parts image queries," IEEE ICIP 2013.
2. Bhardwaj, M. kaur, "A review on plant recognition and classification techniques using leaf images," International Journal of Engineering Trends and Technology, Volume 4, Issue 2, 2013.
3. Wang, D. Brown, Y. Gao and J. L. Salle, "Mobile plant leaf identification using smart-phones," IEEE ICIP 2013.
4. S. G. Wu, F. S. Bao, E. Y. Xu, Y. X. Wang, Y. F. Chang, and Q. L. Xiang, "A leaf recognition algorithm for plant classification using probabilistic neural network," IEEE ISSPIT, pp. 11– 16, 2007.
5. J. Chaki, and R. Parekh, "Plant leaf recognition using Gabor filter," International Journal of Computer Applications Volume 56, No.10, October 2012.