

A Hybrid Wind-SolarEnergy System: A New Rectifier Stage Topology

S.Sureshkumar¹, N.Sivaraj², M.Muruganandam³

P.G. Student, Department of EEE, Anna University, Muthyammal Engineering College, Rasipuram, India¹

Assistant Professor, Department of EEE, Anna University, Muthyammal Engineering College, Rasipuram, India²

Professor, Department of EEE, Anna University, Muthyammal Engineering College, Rasipuram, India³

ABSTRACT: Environmentally friendly solutions are becoming more prominent than ever as a result of concern regarding the state of our deteriorating planet. This paper presents a new system configuration of the front-end rectifier stage for a hybrid wind/photovoltaic energy system. This configuration allows the two sources to supply the load separately or simultaneously depending on the availability of the energy sources. The inherent nature of this Cuk-SEPIC fused converter, additional input filters are not necessary to filter out high frequency harmonics. Harmonic content is detrimental for the generator lifespan, heating issues, and efficiency. The fused multi input rectifier stage also allows Maximum Power Point Tracking (MPPT) to be used to extract maximum power from the wind and sun when it is available. An adaptive MPPT algorithm will be used for the wind system and a standard perturb and observe method will be used for the PV system. Operational analysis of the proposed system will be discussed in this project. Simulation results are given to highlight the merits of the proposed circuit.

KEYWORDS: Hybrid Energy system, Boost converter, Solar panel, Wind system.

I. INTRODUCTION

With increasing concern of global warming and the depletion of fossil fuel reserves, many are looking at sustainable energy solutions to preserve the earth for the future generations. Other than hydro power, wind and photovoltaic energy holds the most potential to meet our energy demands. Alone, wind energy is capable of supplying large amounts of power but its presence is highly unpredictable as it can be here one moment and gone in another. Similarly, solar energy is present throughout the day but the solar irradiation levels vary due to sun intensity and unpredictable shadows cast by clouds, birds, trees, etc. The common inherent drawback of wind and photovoltaic systems are their intermittent natures that make them unreliable. However, by combining these two intermittent sources and by incorporating maximum power point tracking (MPPT) algorithms, the system's power transfer efficiency and reliability can be improved significantly.

When a source is unavailable or insufficient in meeting the load demands, the other energy source can compensate for the difference. Several hybrid wind/PV power systems with MPPT control have been proposed and discussed in works. Most of the systems in literature use a separate DC/DC boost converter connected in parallel in the rectifier stage. To perform the MPPT control for each the renewable energy power sources. A simpler multi input structure has been suggested by that combine the sources from the DC-end while still achieving MPPT for each renewable source. The systems in literature require passive input filters to remove the high frequency current harmonics injected into wind turbine generators. The harmonic content in the generator current decreases its lifespan and increases the power loss due to heating. In this paper, an alternative multi-input rectifier structure is proposed for hybrid wind/solar energy systems. The proposed design is a fusion of the Cuk and SEPIC converters.

International Journal of Innovative Research in Science, Engineering and Technology

(An ISO 3297: 2007 Certified Organization)

Vol. 4, Special Issue 6, May 2015

II. PROPOSED METHOD

The block diagram consists of wind energy system, solar energy system, fuel cell units, boost converter, inverter. The combinations of the solar system, wind system, fuel cell are known as hybrid system. Renewable energy systems generate low voltage output, and thus, high step-up dc/dc converters have been widely employed in many renewable energy applications such as fuel cells, wind power generation, and photovoltaic (PV) systems.

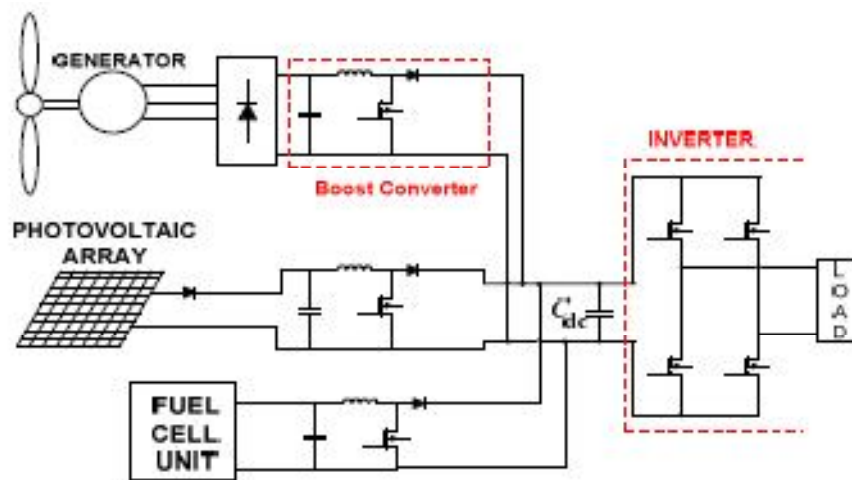


Fig. 1. Block Diagram of proposed system

The output of these renewable energy sources contains some harmonics and they have to boost up or boost down due to the needs. Here boost converters are used to boost up the output of the renewable energy sources (i.e.,) convert low voltage into high voltage step-up converter and then given to the inverters. Inverter used to convert the DC into AC sources. This AC sources are given to the loads.

A. Wind Energy System

Wind results from the air in motion. Wind causes by the uneven heating of the land and the water. The aero turbine is used to convert the wind energy into mechanical energy. The turbines are of horizontal and vertical axis turbine. The pitch control and yaw control is used in the aero turbine.

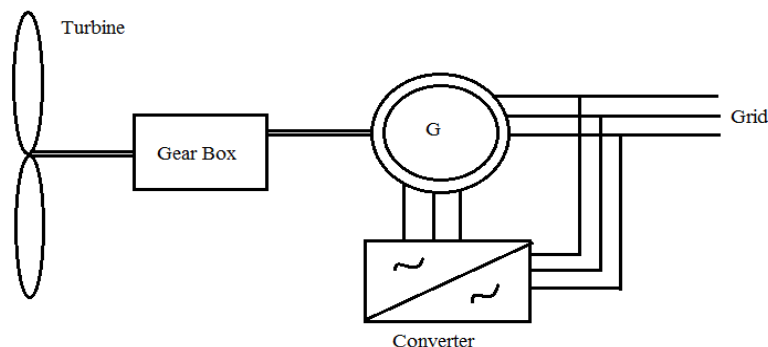


Fig: 2 design of wind turbine

The gear box is used to increase the speed which prevents the turbine. Generators are used to convert the mechanical energy into the electric energy. Synchronous and induction generators are used. Double fed induction generator is most

International Journal of Innovative Research in Science, Engineering and Technology

(An ISO 3297: 2007 Certified Organization)

Vol. 4, Special Issue 6, May 2015

widely used generator in the wind power. Converters are used to control the rotor current. The output is given to the load.

B. Solar Energy System

Energy from the sun is the solar energy. The PV Panel is used to convert the solar energy into electrical energy. PV Panel is a group of PV cells connected in series or parallel. PV cell consists of two layers and a separation layer wired together to form a module. When the panel is exposed to sun light, the photons from the sun interact with the electrons present in the top layer of the solar cell which looses the atom. This atom moves towards the electrons in the bottom layer of the cell. This looses the atom and move towards the wire.

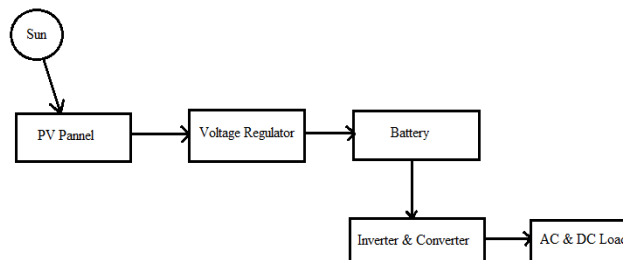


Fig: 3 Block diagram of the Solar PV

The flow of electrons from the one layer to another layer through a wire is the electric current. The sunlight varies due to radiations during daytime and night. So that the output of the PV panel is also varying. The voltage regulator is used to regulate the output of the PV panel. The energy can be stored in the battery for a future use. The inverter and the converters can also be used and fed to the different loads.

C. Fuel Cell

A fuel cell is a device that converts the chemical energy from a fuel into electricity through a chemical reaction with oxygen or another oxidizing agent. Hydrogen produced from the steam methane reforming of natural gas is the most common fuel, but for greater efficiency hydrocarbons can be used directly such as natural gas and alcohols like methanol. Fuel cells are different from batteries in that they require a continuous source of fuel and oxygen/air to sustain the chemical reaction whereas in a battery the chemicals present in the battery react with each other to generate an electromotive force (emf). Fuel cells can produce electricity continuously for as long as these inputs are supplied.

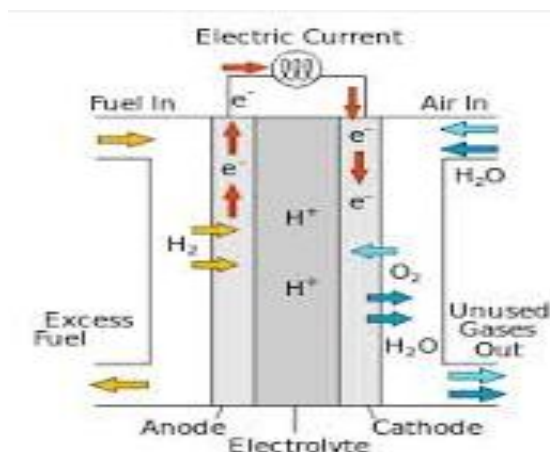


Fig: 4 schematic diagram of fuel cell

International Journal of Innovative Research in Science, Engineering and Technology

(An ISO 3297: 2007 Certified Organization)

Vol. 4, Special Issue 6, May 2015

In addition to electricity, fuel cells produce water, heat and, depending on the fuel source, very small amounts of nitrogen dioxide and other emissions. The energy efficiency of a fuel cell is generally between 40–60%, or up to 85% efficient in cogeneration if waste heat is captured for use.

III. BOOST CONVERTER

The high step-up conversion may require two-stage converters with cascade structure for enough step-up gain, which decreases the efficiency and increases the value of cost. Therefore, a high step-up converter is seen as an important stage in the system because such a system requires a sufficiently high step-up conversion with high efficiency. Thus, in recent years, many novel high step-up converters have been developed. Despite these advances, high step-up single-switch converters are unsuitable to operate at heavy load given a large input current ripple, which increases transmission losses. The conventional boost converter is an excellent candidate for high-power applications and power factor correction.

A boost converter (step-up converter) is a DC-to-DC power converter with an output voltage greater than its input voltage. It is a class of switched-mode power supply (SMPS) containing at least two semiconductors (a diode and a transistor) and at least one energy storage element, a capacitor, inductor, or the two in combination. Filters made of capacitors (sometimes in combination with inductors) are normally added to the output of the converter to reduce output voltage ripple.

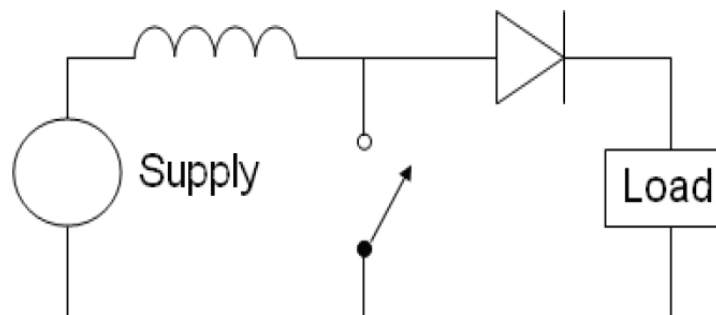


Fig: 5 schematic diagram of boost converter

Power for the boost converter can come from any suitable DC sources, such as batteries, solar panels, rectifiers and DC generators. A process that changes one DC voltage to a different DC voltage is called DC to DC conversion. A boost converter is a DC to DC converter with an output voltage greater than the source voltage. A boost converter is sometimes called a step-up converter since it “steps up” the source voltage. Since power must be conserved, the output current is lower than the source current.

IV.SIMULATION RESULTS

The proposed system is designed using the simulink model and their results are obtained. Solar panel and the fuel cells are also designed and then given to the boost converters.

International Journal of Innovative Research in Science, Engineering and Technology

(An ISO 3297: 2007 Certified Organization)

Vol. 4, Special Issue 6, May 2015

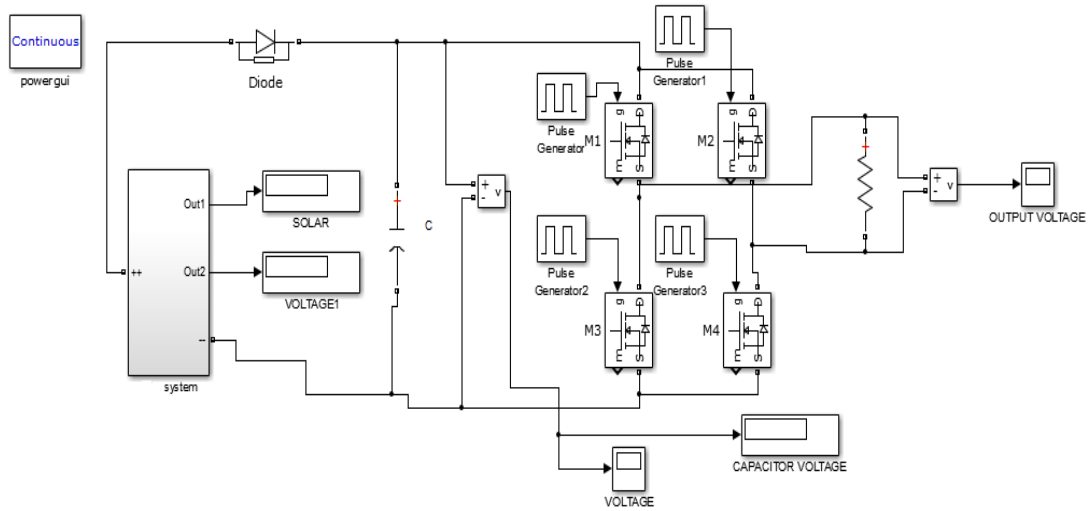


Fig: 6 simulink diagram of proposed system

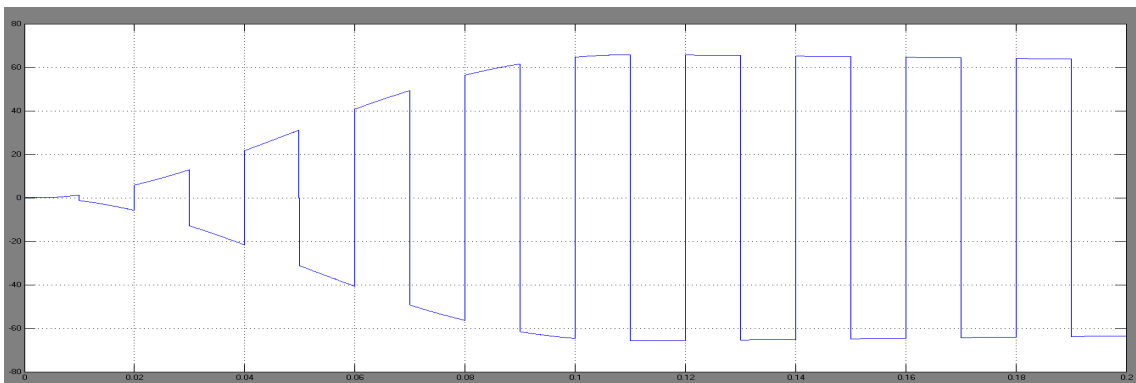


Fig: 7 Output Voltage of The Proposed System

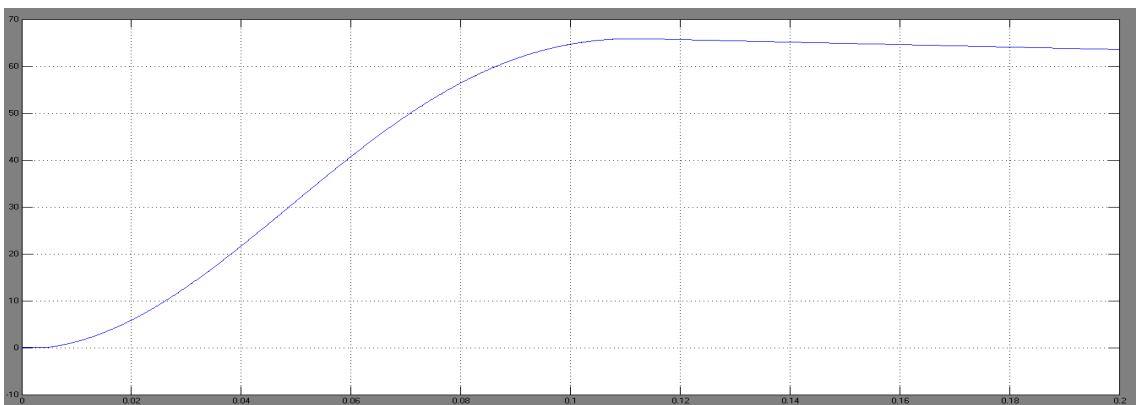


Fig:8 Dc Output Voltage of the Proposed System

International Journal of Innovative Research in Science, Engineering and Technology

(An ISO 3297: 2007 Certified Organization)

Vol. 4, Special Issue 6, May 2015

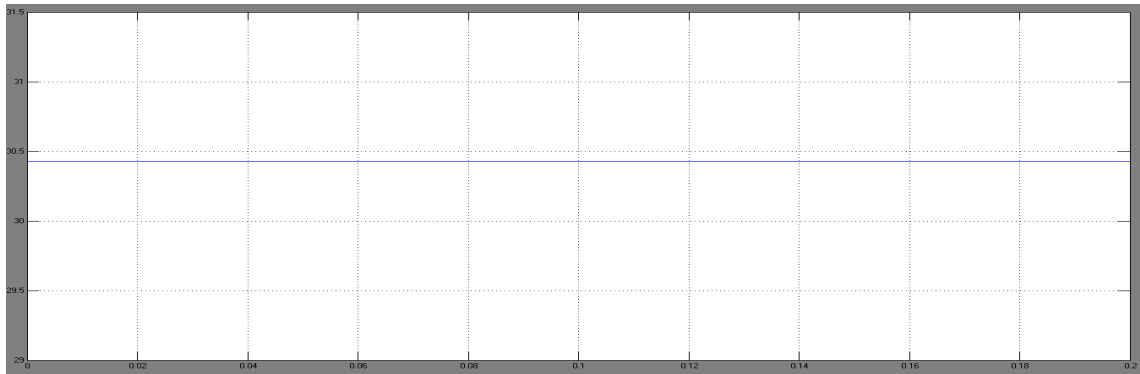


Fig.9 Output Voltage of the Fuel System

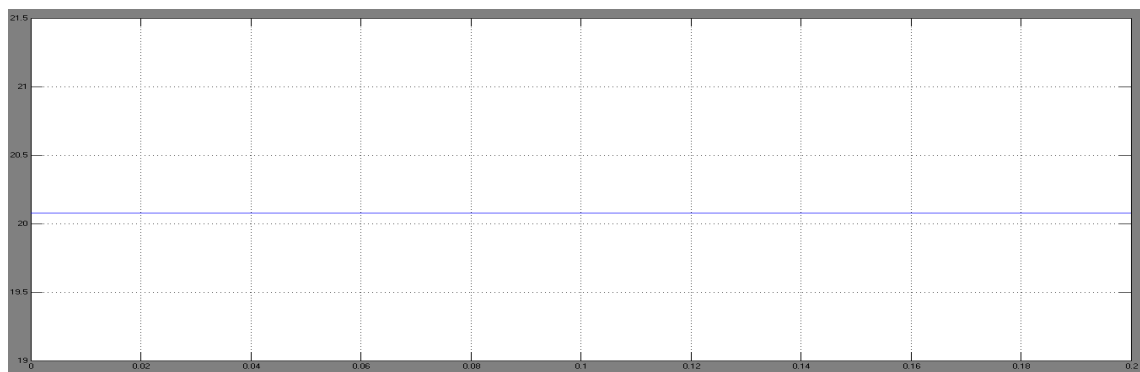


Fig.10 Output Voltage of the Solar System

V. CONCLUSION

The renewable energy system is presented for the high step-up high efficiency converter. In this proposed work the boost converter is used to reduce the current stress of switching devices. The output of the renewable energy is step up as the requirement of the load with higher efficiencies and good power factor. Boost converter along with the solar, fuel cell were simulated and the simulation results are verified.

REFERENCES

- [1] S.K. Kim, J.H. Jeon, C.H. Cho, J.B. Ahn, and S.H. Kwon, "Dynamic Modeling and Control of a Grid-Connected Hybrid Generation System with Versatile Power Transfer," IEEE Transactions on Industrial Electronics, vol. 55, pp. 1677-1688, April 2008.
- [2] D. Das, R. Esmaili, L. Xu, D. Nichols, "An Optimal Design of a Grid Connected Hybrid Wind/Photovoltaic/Fuel Cell System for Distributed Energy Production," in Proc. IEEE Industrial Electronics Conference, pp. 2499-2504, Nov. 2005.
- [3] N. A. Ahmed, M. Miyatake, and A. K. Al-Othman, "Power fluctuations suppression of stand-alone hybrid generation combining solar photovoltaic/wind turbine and fuel cell systems," in Proc. Of Energy Conversion and Management, Vol. 49, pp. 2711-2719, October 2008.
- [4] S. Jain, and V. Agarwal, "An Integrated Hybrid Power Supply for Distributed Generation Applications Fed by Nonconventional Energy Sources," IEEE Transactions on Energy Conversion, vol. 23, June.
- [5] Y.M. Chen, Y.C. Liu, S.C. Hung, and C.S. Cheng, "Multi-Input Inverter for Grid-Connected Hybrid PV/Wind Power System," IEEE Transactions on Power Electronics, vol. 22, May 2007.
- [6] Dos Reis, F.S., Tan, K. and Islam, S., "Using PFC for harmonic mitigation in wind turbine energy conversion systems" in Proc. of the IECON 2004 Conference, pp. 3100-3105, Nov. 2004.
- [7] R. W. Erickson, "Some Topologies of High Quality Rectifiers" in the Proc. of the First International Conference on Energy, Power, and Motion Control, May 1997.
- [8] D. S. L. Simonetti, J. Sebasti´an, and J. Uceda, "The Discontinuous Conduction Mode Sepic and Cuk Power Factor Preregulators: Analysis and Design" IEEE Trans. on Industrial Electronics, vol. 44, no. 5, 1997.
- [9] N. Mohan, T. Undeland, and W Robbins, "Power Electronics: Converters, Applications, and Design," John Wiley & Sons, Inc., 2003.

International Journal of Innovative Research in Science, Engineering and Technology

(An ISO 3297: 2007 Certified Organization)

Vol. 4, Special Issue 6, May 2015

- [10] J. Marques, H. Pinheiro, H. Grundling, J. Pinheiro, and H. Hey, "ASurvey on Variable-Speed Wind Turbine System," Proceedings of Brazilian Conference of Electronics of Power, vol. 1, pp. 732-738, 2003.
- [11] F. Lassier and T. G. Ang, "Photovoltaic Engineering Handbook" 1990.
- [12] Global Wind Energy Council (GWEC), "Global wind 2008 report," June 2009.
- [13] L. Pang, H. Wang, Y. Li, J. Wang, and Z. Wang, "Analysis of Photovoltaic Charging System Based on MPPT," Proceedings of Pacific-Asia Workshop on Computational Intelligence and Industrial Application 2008 (PACIIA '08), Dec 2008, pp. 498-501.
- [14] J. Vinoth, T. Muthukumar, M. Muruganandam, "Implementation of Distributed Maximum Power Point Tracking for Partially Shaded PV Systems", International Journal of Advanced Research in Electrical, Electronics and Instrumentation Engineering, vol.4, issue,2, pp. 702-709, feb.2015
- [15] P. Ranjitha, V. Dhinesh, M. Muruganandam, "Soft Switching with Cascaded Transformers to Drive the PMDC Motor", International Journal of Advanced Research in Electrical, Electronics and Instrumentation Engineering, vol.4, issue,2, pp. 787-794, feb.2015
- [16] G. Maruthaipandian, S. Ramkumar, M. Muruganandam, "Design and Implementation of BLDC Motor Using Regenerative Braking for Electric Vehicle", International Journal of Advanced Research in Electrical, Electronics and Instrumentation Engineering, vol.4, issue,2, pp. 694-701, feb.2015
- [17] S. Lakshmi Priya, R. K. Raghav, M. Muruganandam, "A Thirteen Level Inverter Design Based on Hybrid MLI Topology for Minimum THD", International Journal of Advanced Research in Electrical, Electronics and Instrumentation Engineering, vol.4, issue,2, pp. 976-983, feb.2015
- [18] R. Pavithra, M. Muruganandam, "A Sensorless Current Controlled DC-DC Converter with Intelligent Control Technique", International Journal of Advanced Research in Electrical, Electronics and Instrumentation Engineering, vol.4, issue,2, pp. 779-786, feb.2015
- [19] M. Saravanakumar, C. Harris Naveena, M. Muruganandam, "Bidirectional Modular Multilevel DC/DC Converter with Wide Range of Control", International Journal of Advanced Research in Electrical, Electronics and Instrumentation Engineering, vol.4, issue,2, pp. 984-989, feb.2015