

International Journal of Innovative Research in Science, Engineering and Technology

(An ISO 3297: 2007 Certified Organization)

Vol. 4, Special Issue 13, December 2015

Automatic Side Stand Retrieves System

K.Gowtham¹, G.Gokulnath¹, K.Jeevanandhan¹, C.Senthilraja², L.Vinoth²

Dept. of Mechanical Engineering, Sasurie College of Engineering, Tirupur, Tamilnadu, India¹

Assistant Professor, Dept. of Mechanical Engineering, Sasurie College of Engineering, Tirupur, Tamilnadu, India²

ABSTRACT: In a current world two wheelers plays main role of world. They are useful but there are help for some sad events like accident by mistake of drivers. Major accident obtained due to forget lifting the side stand. To avoid this problem we do the project practically for “AUTOMATIC SIDE STAND RETRIEVES SYSTEM”. This project is based on simple mechanism. All bikes are power transmitted from engine to rear wheel by means of chain drive. So that mechanism operated in chain drive. Since deigned kept for chain drive setup rotates get stand retrieves successfully

I. INTRODUCTION

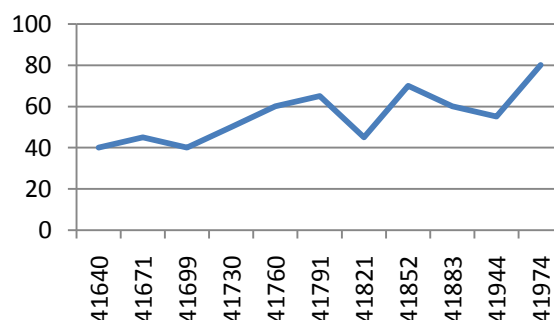
In present scenario the living status were developed. Two wheeler role is main part of world. Auto mobile stand designed for just supporting of bikes it consisting of spring. It helps to retrieves the system the below graph is shows accident percentage. Mostly accident occurred due to forget lifting the stand. So we do the project of automatic side stand retrieves system. It requires minimum power only.

That minimum power is getting from engine through the chain drive. Because engine power is transmitted to rear wheel by chain drive. The power is use only during stand is lifting after that no power is needed. So it not affect efficiency of vehicle. The graph shows the last year accident percentage due to forget lifting the stand. It suitable for all kind of two wheeler bikes. So no needed for special design of automobile stand. The day today life technology is updated. This project consist of only few components such as axle, sprocket, pushing lever and link. The link is used to gives the relative motion to sprocket and stand

II. CONSTRUCTION

Automatic stand retrieves system construction is easy. Engine power is transmitted to rear wheel with help of chain drive. So we fitted the sprocket in chain. Then link is fit with stand and sprocket. That means link one end is fixed in stand and other end is fixed with sprocket. Construction of this system efficient. Because there is a no power loss for this system. chain drive is working for long time. So this system worked for long time.

Accident percentage



the graph is drawn between the accident percentage vs time period

International Journal of Innovative Research in Science, Engineering and Technology

(An ISO 3297: 2007 Certified Organization)

Vol. 4, Special Issue 13, December 2015

III. WORKING PRINCIPLE

Automatic stand retrieves system working principle is simple. When bike is move then chain drive is rotate then sprocket is rotate along with chain drive. Lifting lever is fit with sprocket. Then corresponding lifting lever is rotate. It will push side stand. Then stand is lifted. Then link is give relative motion of sprocket and sprocket unmeshed with chain so it not rotate continuously while bike is running Similarly when stand is return sprocket is engage.

COMPONENT

Here only few component are used. There are follows

- Axle
- Sprocket
- Pushing lever
- Link

AXLE

Axle is stationary part which is used to support the bearing

SPROCKET

A sprocket or sprocket-wheel is a designed wheel with teeth, cogs. The sprocket is connected with chain drive.

PUSHING LEVER

Pushing lever is a lever which is used to push the stand

LINK

Each part of machine is called link and give relative motion to each other. Here link is relative to stand and sprocket

APPLICATION

- This is used in all type of two wheelers such as geared, non- geared, hand gears two wheelers

ADVANTEGES

- Here simple mechanism operated
- It is simple in installation
- No needed for extra power source
- good economic cost
- It not require special design

IV. CONCLUSION

Finally we get the conclusion “automatic- side stand retrieve system” . It is a good retrieves system. Since the setup is compact and easy one it does not disturb the performance of the vehicle. Because of the power is obtained from chain drive. In all type of bikes power transfer through chain drive. This is use for all types (front geared, back geared, hand geared and tvs-xl) of bikes. It prevent the major accidents .so use of AUTOMATIC SIDE STAND RETRIEVES SYSTEM it become a life saver one. In recent world technology is updating one so it will be implement foe future.

REFERENCES

- [1] Analysis on braking ability of automobile equipped with eddy current retarder.HERen, HE Jian-qing(School of Automobile and Traffic Engineering, Jiangsu University, Zhenjiang,Jiangsu 212013, China).
- [2] Modelling and analysis of Two wheeler connecting rod.International journal of Modern Engineering Research (IJMER) Vol.2, Issue.5, Sep-Oct. 2012 pp-3371 cting rod, Dr. K.Tirupathi Reddy2. Syed AtafHussain.
- [3] Shigley, J.E. and C.R. Mischke, 2001. “Mechanical I _ ering Design”, McGraw-Hill, New York, 776.Webster, W.D., R.Coffell and D. Alfaro, 1983.
- [4] Meriam, J.L. and L.G.Kraige., 1998. Engineering Mechanics, 5th Edition, New York, john willey, 712
- [5] kottishwaran engineering mechanics, fourth edition
- [6] Kolchin, A., V. Demidov, 1984. “design of Automotive Engines,” MIR publication.
- [7] R.S khurmi and J.K gupta Theory Of Machine , Fourteenth edition