

# International Journal of Innovative Research in Science, Engineering and Technology

(An ISO 3297: 2007 Certified Organization)

Vol. 4, Issue 9, September 2015

## Desalination of Pyramid Basin Still with Biomass Heat Source

A.Senthil Rajan<sup>1</sup>, C.Ramji<sup>2</sup>

Department of Mechanical Engineering, Mohamed Sathak Polytechnic Kilakarai, Tamilnadu, India<sup>1</sup>

Department of Mechanical Engineering, University College, Anna University, Ramanathapuram, Tamilnadu, India<sup>2</sup>

**ABSTRACT:** In this work a pyramid basin solar still is, used to produce distilled water from raw water using biomass heat source, solar energy. The concept of integrating the pyramid basin still with biomass heat source is introduced in this research study. At the bottom surface of the basin, heat exchanger is laid at the tail end of the watershed area. The heat exchanger is connected to the biomass boiler increases the water temperature in the potty and also increases the productivity in the blade. A conventional still is also tested with the modified still for comparison. Different solid heat storage materials, Latent heat storage materials are introduced in the shape of small billets to increase productivity. Glass cover cooling is performed by using manual sprinkler at regular interval of fourth dimension. Biomass are tried in this workplace. Experiments are conducted in biomass modes and solar modes. Biomass mode produces more output than solar mode.

**KEYWORDS:** iomass boiler, solid, sensible heat storage materials, latent heat storage, Glass cools, water depths. Biomass

### I. INTRODUCTION

The growth of population and human, agricultural and industrial activities increases the need of pure water. The supply of drinkable water is an important problem in the growing nations. In India the storage reservoirs are minimum. Here drinking water scarcity is present in many parts of the country. Huge amount of water is required for different industrial processes, only a fraction of the same is incorporated in their products and lost by evaporation the rest finds its way into the watercourses as waste water and contributed to natural bodies of water. Industrial waste either join the stream or other natural water directly Many attentions are given in India on treatment of waste water. Many attempts have been made to improve the efficiency of the stills. Ashokkumar and Tiwari [1] investigated the use of hot water in double slope heat exchanger and found that the use of hot water increases production during off sunshine hours. Voropolulos et.al [2] experimentally investigated the hybrid still coupled with solar collectors the results showed that the productivity is doubled by coupling. Badran and Tahaneih [3] found that the output of still was increased by 36% by using a flat plate collector. Velmurugan and Srithar [4] fabricated the solar still with pretreatment arrangement. This arrangement reduces the color and purity of effluent. The addition of sensible material increases the production. Senthilrajan et.al,[5] analyses Multibasin still with biomass heat sources and done analytical validation using response surface methodology. Senthilrajan et.al [6] integrated a pyramid still with single basin still using common biomass heat source with various sensible materials the results shows that the productivity of combined still was maximum in biomass mode than conventional and solar modes. Badran [7] has studied the performance of a single slope solar still using different operational parameters experimentally. The study also showed that the daily production of still can be increased by reducing the depth of the water in the basin. Aybar et al. [8] found that length of an absorber plate leads to an increase in the rate of evaporation. They tested the system with black-cloth wick and black wick. They found that the fresh water generation rate increased two to three times when wicks were used instead of bare plate. Murugavel et al. [9] fabricated a basin type double slope solar still with mild steel plate and tested with minimum mass of water. Different wick materials like light cotton cloth, sponge sheet, coir mate and waste cotton pieces were used in the basin. Still with aluminium rectangular fin arranged in different configurations and covered with different wicks were also tested. Fath and Hosny [10] analysed the thermal performance of a single sloped basin still with an inherent built in

# International Journal of Innovative Research in Science, Engineering and Technology

(An ISO 3297: 2007 Certified Organization)

Vol. 4, Issue 9, September 2015

condenser to improve condensation rate. Atikol et al. [11] studied the inclined solar water distillation system and tested with three variants, base plate, black cloth, and wick. Nakatake [12] made a study to increase the distillate productivity by an inclined the flat plate external reflector on a tilted wick solar still. Zeinah et al. [13] used the oil heat exchanger to preheat the saline water inside the solar still and got 18% increase in productivity. Hiroshi and Yasuhiro [14] have designed, compact multiple-effect diffusion-type solar still consisting of a heat-pipe solar collector and a number of vertical parallel partitions in contact with saline-soaked wicks. The productivity of the proposed still is 13% larger than the multiple effect diffusion still coupled with a basin type still.

Tarawneh [15] has studied about the effect of water depth in the basin on the water productivity. The performance characteristics showed that the water productivity is closely related to the incident solar radiation intensity. Boubekri and Chaker [16] studied the effect of the speed wind, the mass flow rate and the water depth in the basin. The results showed that productivity of the still is maximum for a flow rate of 0.0009 kg/s and 0.0015 kg/s and also the wind speed increases the temperature difference between glass and water. Economic analysis was performed by using various equation used in Kandapal and Garg [17] and calculated payback periods. Shiva Gorjian, Bharath Ghobadian, Teymour Tavakkoli Hashjin, and Ahamed banker [18] fabricated and tested a stand alone point focus parabolic solar still. The saline water is preheated before send in to the still by the point focus parabolic collector. The daily productivity of 5.12Kg was reported in their work. S. A. El-Agouz [19] investigated a stepped still with continuous circulation and found that the productivity is increased in the modified still by 20% when compared to conventional still. The day and night efficiency of 5%, 3.5% was increased for sea and salt water. Karel Ghyselbrecht, Marie Huygebaert, Bart Vander Bruggen, Rob Ballet, Bouewijn Meesschaert, Luc Pinoy [20] treated industrial waste using electro dialysis bipolar membrane method this method removes 60% of chloride salt from the water. Jianquan Luo, Yinhua Wan [21] treated industrial wastes in their work by using nano filtration methods. NF270 membrane was used to treat the water. This method removes the salts and increases the PH to drinking standards. Since the feed is an effluent it needs proper treatment before it is supplied to the still. Hence in this work pre treatment are given to the feed to remove the impurities, chemicals and salts In order to fulfill the above gap biomass heat source was used to increase the water temperature in the still. In this work the performance of the single basin solar still is investigated. The lower portion of the basin fitted with a heat exchanger and coupled with a biomass boiler. The biomass boiler acts as a heat source to supply continuous heat into the basin. Sensible and latent heat storage materials are used in the lower and upper basins to increase water temperature. Various water depths of 2cm, 3cm, and 4cm were analyzed. Various combinations of sensible, latent heat, evaporation materials, and latent heat materials are used in the form of billets in the still to increase productivity. Glass cover cooling is provided with the help of manual sprinkler at regular interval of time to increase the condensation rate. To increase evaporative area yellow sponges, coconut wastes, bricks are used along with sensible and latent heat storage materials.

## II. EXPERIMENTAL SET UP

The raw water is used as feed it needs handling. The size of the basin was 0.81x 0.66 x 0.59m. The lower basin was fitted with 0.0125m diameter G. I heat exchanger having 8 numbers of turns The basin is painted black to absorb maximum solar radiation. The position and bottom positions of the stills were insulated with 0.004m thick thermocouple insulation layer (0.015W/m-K thermal conductivity) to cut heat losses in the still. The condensing surface of the blade is made of plain glass with 4mm thickness is set at 30° inclination to the horizontal axis. A silicone rubber sealant is applied to keep the glass intact with the steel to prevent the vapor leakage from the still. Collection troughs were provided at a lower place the lower borders of the ice cover, to collect the condensate. Distillate outlets were provided to drain the water through hoses and to store in jars. Provisions were made to supply raw water, run out the basin water and insert thermocouples. The biomass boiler having 133mm outer diameter and shell thickness 12mm and height 550mm made of cast iron was used as a high temperature source. The boiler is fired tube type internally fired with locally available biomass materials. The lower part of the boiler is called the furnace where biomass is eaten into the furnace through the fuel input door. The burnt ashes are gathered at the lower end and removed periodically. The lower end of fire tube is joined to the furnace and the upper end is tied to the chimney. Boiler drum has inlet and outlet to hold the feed water from the kettle. The feed water is furnished to the boiler drum by gravity from the input feed water supply tank which is located above the elevation of the boiler. Safety valves and pressure gauges are fitted to a higher place the boiler drum for safety aspects the exhaust gases after passing through the fire tubes are exhausted

# International Journal of Innovative Research in Science, Engineering and Technology

(An ISO 3297: 2007 Certified Organization)

Vol. 4, Issue 9, September 2015

to the atmosphere through chimney provided at the upper side of the kettle. The boiler is supplied with biomass and fired manually. The inlet end of the heat exchanger is connected to the boiler vent pipe and outlet end was connected to the circulation pump to circulate water again to the boiler drum. Experiments were conducted at University college, Ramanathapuram, Tamil Nadu, India during the months of June- July 2015. The interpretations were read from morning 9am to 5pm and 6pm to 12hrs for every one hour interval for solar and biomass modes. PV sun meter, digital anemometer and mercury thermometers were used to measure global radiation, current of air speed and ambient temperatures respectively. K-type thermocouples with multi channel digital display unit was used to measure basin, water, glass cover temperatures. Fig.1 shows the internal view of test setup.

### III. WORKING

At once the feed is admitted into the still. Solar still is supplied with 2cm depth of water through the inlet pipe in the still. Biomass boiler was filled with feed water supplied from the inlet supply tank. Biomass having 1kg of mass are fed inside the furnace through the fuel supply door and ignited manually. Water in the drum gets heated the burnt gas passes through the inner side of the fire tube and exhausted to the atmosphere through the chimney. While running, the burnt gas gives out the heat to the water in the outer barrel. Therefore the water gets boiled. The boiled water is distributed inside the solar still through the heat exchangers and the circulation pump. The water inside the solar still absorbs heat from the heat exchangers and evaporated into vapors reaches the bottom surface of the ice screen. The top surface of the basin was Cooled externally the vapor condenses and collected in the condensate collection channel as Distilled water. A collection flask collects the distilled water. Water circulation and the burning process in the boiler continuous through circulation pump at constant speed. In the solar mode the still is exposed to solar radiation and the biomass boiler is cut away from the steel. Before beginning the experiments the glass top was cleaned by using cotton cloths.

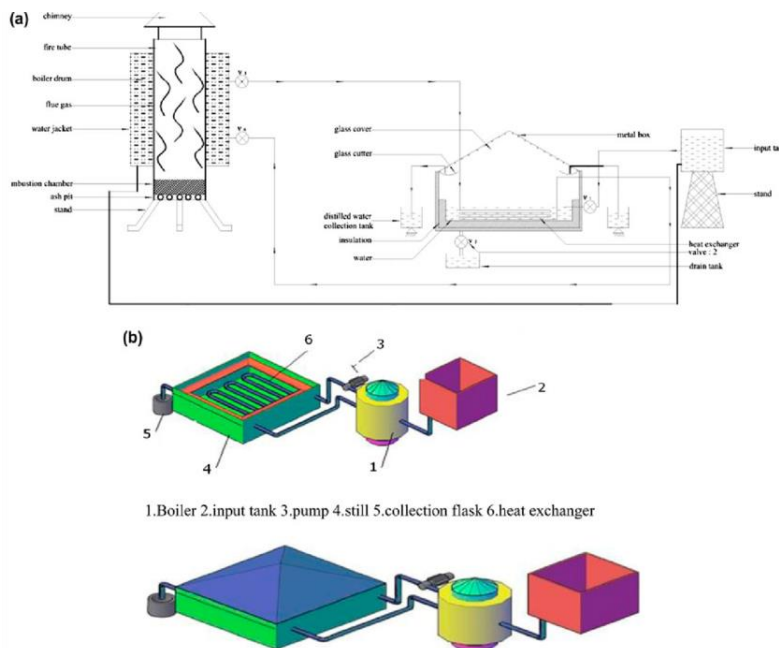


FIG.1 EXPERIMENTAL SET UP

# International Journal of Innovative Research in Science, Engineering and Technology

(An ISO 3297: 2007 Certified Organization)

Vol. 4, Issue 9, September 2015

## IV. MODIFICATIONS

### i. Modes of operations

Several forms of biomass fuel such as wood chips, wood, palm wastes are applied in the boiler and their operation are found out. Continuously burning of biomass and circulation of hot water through the heat exchanger for continuous style. The biomass heat source is disconnected and the still is exposed to solar radiation for solar mode.

### ii. Glass cover cooling

Glass cover cooling increases the compression process. Hence various cooling methods such as manual spraying of urine along the ice screen at regular interval of time is proving to reduce glass temperature.

### III. Sensible heat storage

Several types of sensible heat storage materials such as granite pieces, cast-iron pieces and aluminum pieces were trying to increase the water inlet temperature.

### iv. Evaporative area

To increase exposure area coconut coir, sponges, bricks were introduced in the watershed.. All the exposure materials are of area 0.5x0.5m placed 20% in the water surface.

### v. Water depth

Various types of water depths such as 2cm, 3cm, and 4cm were introduced into the still to check the performance

## V. RESULTS AND DISCUSSIONS

### 5.1. Effect of sensible heat storage materials on productivity in solar mode

Some materials can store more amount of heat energy and increases the heat capacity of the basin in addition to increasing the basin absorption. These materials absorb energy during heating periods and released energy slowly during cooling. The Fig.2 shows the productivity of various solid sensible heat storing materials with time various materials such as cast-iron, Aluminum, Granite pieces are placed inside the still with 2 cm water depth and tested. The productivity of aluminum pieces are 58% more than conventional still The other materials such as granite, cast-iron produces 24%, 35% more productivity than conventional still when operated under solar mode. The productivity is taken for average solar radiation of 400-900 W/m<sup>2</sup> during various days of test trails.

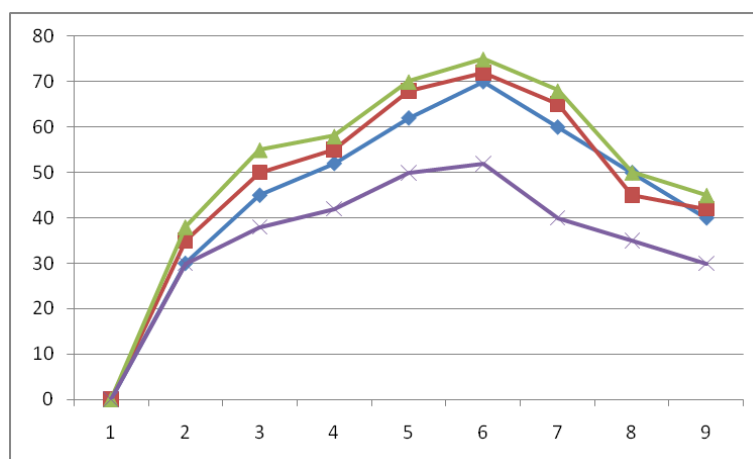


Fig.2 Productivity of various solid sensible heat storing materials

# International Journal of Innovative Research in Science, Engineering and Technology

(An ISO 3297: 2007 Certified Organization)

Vol. 4, Issue 9, September 2015

## 5.2 Effect of evaporative surfaces on productivity

Due to capillary action sponges, bricks and coconut coir absorbs more water. Thus exposure area is increased. Addition of these materials in the still raises the water by capillary action which leads to increase the evaporation rate in the still. As shown in Fig.3 Productivity is increased by about 34 % for coconut coir, 44% for sponges and 24 % for bricks than conventional still operated in solar mode. The readings plotted on the Fig.3 is taken for the average wind velocity of 1.8- 2.9m/s on various days of test trails.

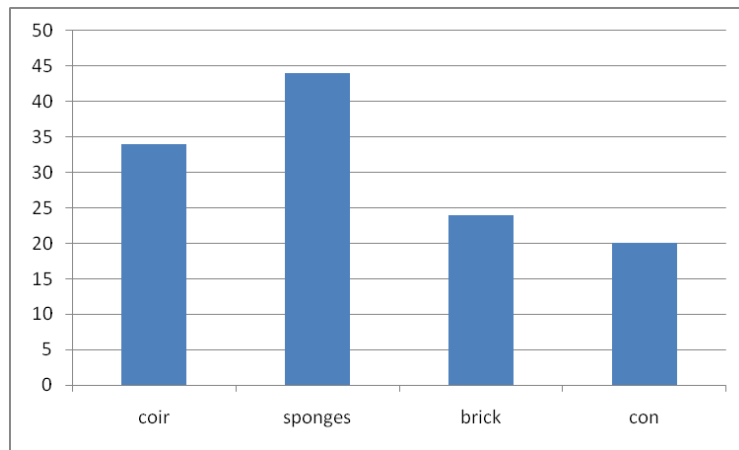


FIG.3 Effect of evaporative materials

## 5.3 Effect of Latent heat storage materials

The Fig.4 shows the productivity of the various latent heat storage materials in solar mode. Various liquid materials such iodine and ethylene glycol are packed inside the billet and introduced into the still. The latent heat materials having a property of changing their phase from liquid to vapors during charging periods and from vapors to liquid phase again during discharging periods. During the charging periods it absorbs energy and releases during discharging. The productivity of glycol is 32% higher than conventional still. Similarly the productivity of iodine was 18% higher than the conventional still.

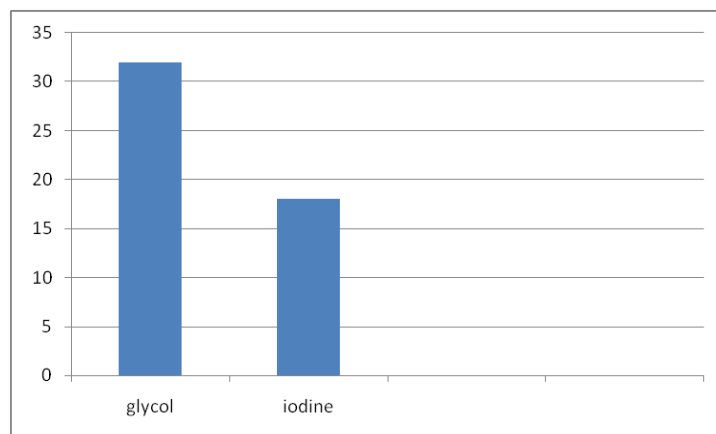


Fig.4 Effect of Latent heat storage materials

# International Journal of Innovative Research in Science, Engineering and Technology

(An ISO 3297: 2007 Certified Organization)

Vol. 4, Issue 9, September 2015

## 5.4. Temperature reduction using cooling water

The amount of water produced from the solar still depends upon saline water temperature, ambient temperature, relative humidity and wind velocity of the location. The parameters such as wind velocity, relative humidity, and ambient temperatures vary with time. If the wind velocity is higher it cools the glass cover quickly than at lower velocities. Lower ambient temperature also cools the glass quickly. Lower relative humidity results in decreasing the sky temperature and increases the cooling process. In this work water is forced by the pump and sprays as a jet on the glass cover and reduces the glass cover temperature, which increases the condensation process. The Fig.5 shows the temperature of glass before and after cooling. It was concluded that the glass cooling reduces the temperature and improves the productivity in the still.

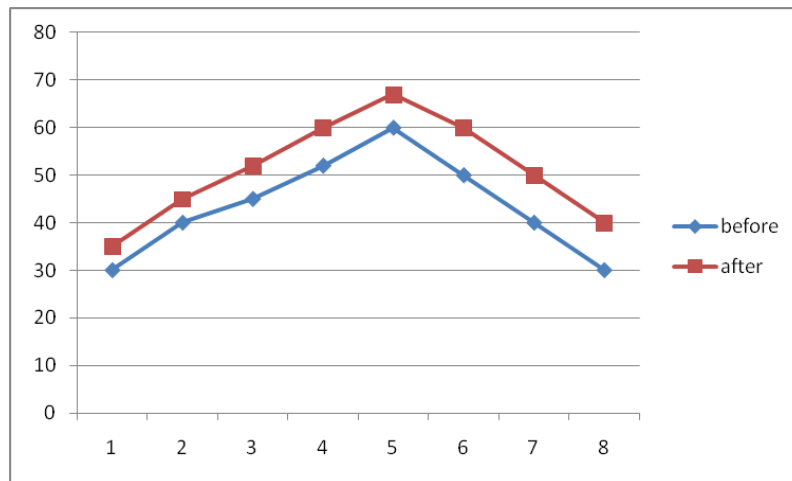


Fig.5 Effect of glass cooling

## VI. CONCLUSION

An experimental work has been conducted to predict the productivity of a single slope solar still coupled with biomass boiler using different solid, liquid sensible heat storage mediums and various evaporative materials.

Desalination of Effluent Waste Using Biomass Heat Source 16951

Based on the experimental results the following conclusions are made

An increase in the still productivity was observed with the increase in the energy supplied by the biomass boiler.

The productivity of the still coupled with biomass boiler does not depend on solar radiation.

Changes in solar radiation do not affect production. Solar still behaves as condensing unit.

Water production is made constant if continuous burning inside the boiler. Biomass is Eco friendly.  
Cost of water production is low.

The yield can be increased in proportion to increase in inlet water temperature.

Use of solid sensible heat storage materials in the still improves productivity by 73% than conventional still.

# International Journal of Innovative Research in Science, Engineering and Technology

(An ISO 3297: 2007 Certified Organization)

Vol. 4, Issue 9, September 2015

Evaporative surface increases productivity of 34 % for coconut coir, 44% for sponges and 24 % for bricks than conventional still.

The used of evaporative surfaces increases the area of exposure and still productivity by 68%

Lower water depth in the still increases the productivity in the still.

Manual glass cover cooling in the still reduces the glass cover temperature and increases the condensation process in the still.

Experimental values are very close to the response surface values. Theoretical equations are solved and perfectly balanced.

## REFERENCES

1. Ashok kumar, Tiwari GN .Use of waste water in double slope solar still through heat exchanger. Energy conversion and management 1990; 30(2); 81- 90.
2. Voropoulos K Mathioulakis E Belessiotis V . A hybrid solar desalination and water heating system.Desalination 163(2000):189-95.
3. O.O.Badran,H.A.Al-Tahaneih . ‘The effect of coupling a flat plate collector on a solar still productivity’,Desalination 183(2005):137-142.
4. V. Velmurugan, K. Srithar , ‘Performance analysis of solar stills based on various factors affecting the productivity—A review’. Renewable and Sustainable Energy Reviews 15(2011) 1294–1304.
5. A.Senthilrajan, K.Raja , P.Marimuthu. Multibasin desalination using biomass heat source and analytical validation using RSM. Energy conversion and management 2014; 87,359-366.
6. A.Senthilrajan, K.Raja , P.Marimuthu. Augmentation of single basin and a pyramid still desalination using common biomass heat source and Analytical validation using RSM. Australian journal of basic and applied sciences, 2014; 8 , 212-218. 16952 A.Senthil Rajan and K.Raja
7. Badran, O.O., Experimental study of the enhancement parameters on a single slope solar still productivity. Desalination, 2000; 209, 136–143.
8. Aybar S. Hikmet, Egelioglu Fuat and Atikol U.An experimental study on an inclined solar water distillation system. Desalination ,2008 ; 180, 285-289.
9. Kalidasa Murugavel, K., Chockalingam, Kn.K.S.K., Sivakumar, S., Ahamed Riaz, J., Srithar, K, 2010. Single basin double slope solar still with minimum basin depth and energy storing materials. Applied Energy, 2010; 87, 514– 523.
10. Hassan E.S. Fath and H.M. Hosny. Thermal Performance of a single sloped basin still with an internet built in additional condenser. Desalination,2000; 142,19 – 27.
11. Atikol U. An experimental study on inclined solar water distillation system. Desalination, 2005; 180, 285 – 89.
12. Hiroshi Tanaka and Yasuhiro Nakatake. Increase in distillate productivity by inclining the flat plate external reflector of a tilted – wick solar still in winter. solar energy, 2009; 152 ,90 – 91.
13. Zeinab S. Abdel-Rehim, Ashraf Lasheen. Experimental and theoretical study of a solar desalination system located in Cairo, Egypt. Desalination 2007; 217, 52 – 64.
14. Hiroshi Tanaka and Yasuhiro Nakatake. A vertical multiple-effect diffusion-type solar still coupled with a heat-pipe solar collector. Desalination,2004; 160, 195-205.
15. Muafag Suleiman K. Tarawneh, Effect of Water Depth on the Performance Evaluation of Solar Still, 2007; 1, 17-25.
16. M. Boubekri and A. Chaker. Performance of an Active Solar Still. Desalination,2002; 249 ,019–022.
17. Kandpal TC, Garg HP. Financial Evaluation of Renewable Energy Technologies. Macmillan India Ltd., 2003.
18. ShivaGorjian, BharathGhobadian, TeymourTavakkoliHashjin, Ahamed banker.Experimental performance evolution of a stand-alone pointfocus parabolic still.Desalination,(2014) 352;1-17.
19. S. A.El-Agouz.Experimental investigation ofstepped solar stillwith continuous water circulation.Energy



ISSN(Online) : 2319-8753  
ISSN (Print) : 2347-6710

## **International Journal of Innovative Research in Science, Engineering and Technology**

*(An ISO 3297: 2007 Certified Organization)*

**Vol. 4, Issue 9, September 2015**

- conversion and management, (2014) 86;186-193.
20. Karel Ghyselbrecht, Marie Huygebaert, Bart VanderBruggen, Rob Ballet, Bouewijn Meesschaert, Luc Pinoy. Desalination of an industrial saline water with conventional and bipolar membrane electrolysis. *Desalination*, (2013) 318; 9-18.
  21. Jianquan Luo, Yinhua Wan. Desalination of effluents with highly concentrated salt by nano filtration: From laboratory to pilot-point. *Desalination*, (2013) 315; 91-99.